



Upperworks

➤ Engine

The imported Cummins QSL9 inline 6-cylinder, water-cooled, 4-stroke diesel engine with a rated power of 242kW (325hp) and a rated speed of 2100rpm; the maximum output torque is 1424N·m (1050lb·ft) and the rotation speed at maximum output torque is 1500rpm.

EFI engine, comply with European Non Road Mobile Machinery Emission Standard Tier III.

The engine is equipped with air pre-filter, air filter, low noise fan and compound cooler, which are all appointed by Cummins.

Fuel tank capacity: Cubage 400L (106gal.), the quantity of oil shall be indicated through oil gauge or electronic display.

➤ Hydraulic System

The hydraulic system is composed of three parts: main hydraulic system, servo control system and auxiliary system.

All the main hydraulic elements are imported from Kawasaki or Bosch Rexroth.

The products provided by Kawasaki are open-loop positive flow hydraulic system, which shall be fast for responding the operations and stable with less heat and longer operation life.

The system provided by Bosch Rexroth is load sensitive LUDV system, which can

achieve the flow distribution un-rely on load pressure. Closed-loop hydraulic system shall be adopted for swing system with stable action and fast responding.

The main pump is of variable displacement dual pump with power control pressure 320 bar (4640psi) open-loop hydraulic system.

Hydraulic pressure pilot proportional control is adopted, with sensitive operation and good inching performance.

➤ Main and Auxiliary Hoisting Mechanism

The main and auxiliary hoisting winches are driven separately. The compact structure allows easy installation and low abrasion, and the free-maintenance wet type brake concealed ensures winch safe working.

Variable displacement hydraulic motor can realize maximum winch speed through automatic displacement adjustment according to the load.

High quality stainless steel wire ensures the safety during hoisting and with long operational life.

Using bag style rope shall make it convenient and quick for the steel wire during disassembly/assembly.

The pallet locking device shall make it safer for hoisting.



Main hoisting device	Drum Diameter	496mm (19-1/2")
	Outmost cable speed	0~125m/min (0~410fpm)
	Diameter of steel wire	26mm (1")
	Length of steel wire for Aux. winch	350m (1148'4")
	Rated line-pull	13,100kg (28,900lb)

Auxiliary hoisting device	Drum Diameter	496mm (19-1/2")
	Outmost cable speed	0~125m/min (0~410fpm)
	Diameter of steel wire	26mm (1")
	Length of steel wire for Aux. winch	300m (984'3")
	Rated line-pull	13,100kg (28,900lb)

➤ **Swing System**

The swing mechanism is driven by swing motor together with hydraulic cushion, which provides 360° rotation.

Braking: closed, concealed, wet type and spring loaded brake. Oil pressure is released by spring brake.

Locking: locking devices are installed to prevent the top swing from being impacted during transportation and traveling with load.

Swing support: three rows trundle style support.

To do business, to be a qualified person first; Quality changes the world.

Rotating speed: 0~2.0 r/min

➤ **Luffing Gear**

Ratchet pallet locking gear is equipped in mid-plate of duplex luffing winch to ensure the safety of boom under shut-down conditions.

Luffing device	Drum Diameter	460mm(18-1/8")
	Outmost cable speed	(0~24)×2 m/min ((0~78.7) ×2 fpm)
	Diameter of steel wire	20mm (13/16")
	Length of steel wire for main hoisting gear	320m (1049'10")
	Rated line-pull	9,730kg (21,450lb)

➤ **Counterweight**

Name	Quantity	Unit weight kg (lb)	Gross weight kg (lb)
Counterweight	6	6,000 (13,300)	36,000 (79,400)
Counterweight	2	3,000 (6,600)	6,000 (13,300)
Pallet counterweight	1	11,400 (25,200)	11,400 (25,200)
Weight of standard counterweight kg (lb)		53,400 (117,800)	
Additional counterweight	4	3,000kg (6,600lb)	12,000kg (26,500lb)
Gross weight kg (lb)		65.4 (144,200lb)	

➤ **Operator's Cab**

The novelty pattern SANY style driver's cab is completely closed with wide vision field, which is equipped with adjustable



seat and cooling and heating air conditioner.

Four front lights are installed to provide long and short range illumination. The large glass windows with rearview mirror enlarge the vision field greatly. The handrail box can be adjusted with the adjustment of the seat so as to make the operator feel comfortable. It is in accordance with ergonomics.

➤ **Controls**

Each action of track traveling gear is realized through traveling pedal (handle). The left traveling pedal (handle) drives the left crawler and the right traveling pedal (handle) drives the right one. The rotating speed of the engine is controlled by the foot or hand throttle and the switch of the engine is fixed on the right handrail box. The luffing and main winch handles are fixed on the right handrail box, Aux. winch and swing control handles are fixed on left handrail box. Swing lock button lies on the left of left handrail box, and Aux. operation box lies in left front of the seat. Corresponding functions are realized by operating switches on panel manually.

The traveling pedal (handle) is with the function of automatically positive function, which means the positive direction is always that for the operators.

Lowerworks

➤ **Crawlers**

Independent traveling gear is provided in each track frame. The hydraulic traveling motor drives planet gear reductor and achieves independent traveling through driving wheel transmission.

➤ **Traveling Brake**

The traveling brake is the closed disc brake installed in the reductor (i.e. it is in braking status when the control pedal valve is not stepped). It can be compensated automatically without regulation. When the operating pedal is stepped down, the brake is released and the crane travels.

➤ **Crawler pads**

High strength welding frame structure. Power pin of hydraulic cylinder joins with track frame which is convenient for assembling and disassembling.

➤ **Chassis**

The power pin of hydraulic cylinder is connected with the track frame and is easy to assemble and disassemble. Welded frame structure has high strength.

➤ **Traveling Speed**

Low speed: 0~0.6 km/h(0~0.37 mph)

High speed: 0~1.2 km/h(0~0.75 mph)

Operation Device

➤ **Main Boom**

The boom frame is a space truss type structure whose middle part is of the same cross section and the two ends are of



variable sections. Its main chord pipe is of high strength steel pipe. The tip and bottom of the boom frame are strengthened with steel plate for easy transmission of load.

Combination of boom frame:

The basic boom is 18m(59'1"), the boom tip is 7.5m(24'7"), and the boom base is 10.5m(34'5"). With 3m(9'10") as increment, the length and quantity of booms are respectively as follows: 3m×1(9'10"×1), 6m×3(19'8"×3), 9m×2(29'6"×2) and 12m×2(39'4"×2).

The maximum boom length is 81m (265'9").

➤ **Fixed Jib**

The boom frame is a space truss type structure whose middle part is of the same cross section and the two ends are of variable sections. Its main chord pipe is of high strength steel pipe. The tip and bottom of the boom frame are strengthened with steel plate for easy transmission of load.

Fixed jib can be installed on the main boom with the length of 27~75m(88'7"~246'1"). Thereinto, the boom tip is 5m(16'5"), the boom base is 5m(16'5") and the boom insert length× numbers shall be 3m×1(9'10"×1), 6m×3(19'8"×3) and the available jib length respectively is: 13m(42'8"), 19m(62'4"), 25m (82')and 31m(101'8").

Maximum main boom + maximum jib:

69m+31m/75m+13m(226'5"+101'8"/246'1"+42'8")

➤ **Hook Block**

Standard configuration:

150t (165USt) Hook block

50t (55USt)Hook block

13.5t (15USt) Hook block

Optional Configuration:

25t (27.6USt) Hook block

100t (110USt) Hook block

Note: the above-mentioned equipments are the complete configuration. The detailed configuration shall be in accordance with the order.

Safety Device

➤ **Load Moment Indicator**

Here is an independent security operating system completely controlled by computer in the load moment limiter. It can automatically detect weight hoisted by the crane and the angle of the boom and indicate the rated load, actual load, operating radius and angle of the boom.

Composition: host machine, monitor, angle sensor and force sensor etc.

Function: instantaneously display the rated load, actual load, operation radius, angle and height of the boom under the current situation of the crane. Automatically detect the dynamic data of the angle over-limitation and load over-limitation and alarm immediately and stop the operation.

➤ **Anti-overwinding Device**

for Main and Auxiliary Hooks

The limit switch and heavy punch fixed on the boom tip are used to prevent the hook from being lifted over high. When the hook is lifted to a certain height, the limit switch is activated so as to make the buzzer on the control board alarm by both electrical and hydraulic control and the hook lifting operation stop automatically. On this occasion, the hook overwinding could be prevented.

➤ **Anti-overloosening Device for Main and Aux. Hook blocks**

It is composed of the motion trigger device fixed inside of the drum and proximity switch. The protector shall send signal when the steel wire in the drum was loosened close to the last 3 circles and the electrical controlling system shall automatically stop the hooks and alarm through buzzer and monitor.

➤ **Switch for Assembling Mode/Operation Mode**

The anti-overwinding device, caging device of boom, A-frame alarming device, and load moment limiter are all out of commission under the assembling mode so as to make it easier to install the crane. Under the operation mode, all the safety devices are operated.

➤ **A- frame Alarming Device**

Under operation mode, the system shall

alarm through buzzer and monitor in case the A-frame was not lifted to the right position.

➤ **Caging Device for Boom**

When the elevation of the boom is over 80°, the buzzer shall alarm and the hoisting operation shall be stopped. Synchronously, the lifting operation of luffing drum is out of commission and only lowering operation is allowed. This protection function shall be controlled by both of the load moment limiter and the two-stage control of travel switch.

When the angle of the boom is less than 30°, the buzzer shall alarm and the boom shall be stopped. Synchronously, the lowering operation of the swing drum is out of commission and only the lifting operation is allowed. This function shall be automatically controlled by load moment limiter.

➤ **Anti-retroversion Device for Boom**

The anti-retroversion rod is made in nested steel pipe and spring structure fixed on the top of the boom base, which is equipped with the function of support through the spring pressure so as to prevent the main boom retroversion.

➤ **Swing Lock Device**

The electrical and hydraulic controlled swing lock can lock the upperworks completely, which is equipped with sensor

and ensure no swing motion will appear under locking status through logical control.

➤ **Drum Lock Device**

Electrical controlled locking device is set on winch, Aux. winch and luffing drums, which means it is essential to release the pallet switch before the winding operation so as to prevent the misoperation of handle and to guarantee the safety when the winch is under non-operation mode.

➤ **Angle Indicator**

Pendulum-type angle indicator mounted on the side close to the driver's cab of the boom base.

➤ **Hook Clamp**

Each kind of hook is equipped with baffle used to prevent the steel rope from coming off.

➤ **Acousto-optic Alarm**

It can send acousto-optic alarm within 5 seconds after the engine starts and during swing and traveling. And the left and right shall flicker during swinging.

➤ **Gradienter**

Electronic gradienter can indicate the inclining angle of the upperworks on the monitor of the control system.

➤ **Relief Switch**

When the operator is not at seat or draws back the relief handle, the relief valve shall be opened and all the operations are out of commission so as to prevent

misoperations.

➤ **Emergency Stopping Button**

When emergency appears, press this button to cut off the electricity and stop all the operations.

➤ **Tricolor Load Alarming Light**

The load alarming light includes 3 colors, i.e. green, yellow and red, which can display the instantaneous load synchronously. Namely, the green color means the load rate is less than 90%, the yellow color means the load rate is between 90% to 100% and the red color means the load rate is over 100%, which is in overload situation.

➤ **Monitor System**

Camera: 2 PCS, respectively monitor the winch mechanism and the situation of the back portion for the complete appliance.

Monitor: the monitored images can be switched from one camera to the other through switches.

➤ **Optional Anti-lightening Stroke Protection Device**

It includes grounding devices and surge-protect device, which can prevent the damage of the electronic components and the hurt of the staff from lightening.

➤ **Optional Remote Monitoring System**



The functions of GPS satellite orientation, GPRS data transmission, inquiry of the operation of the equipments, statistic and remote failure diagnosis is available.

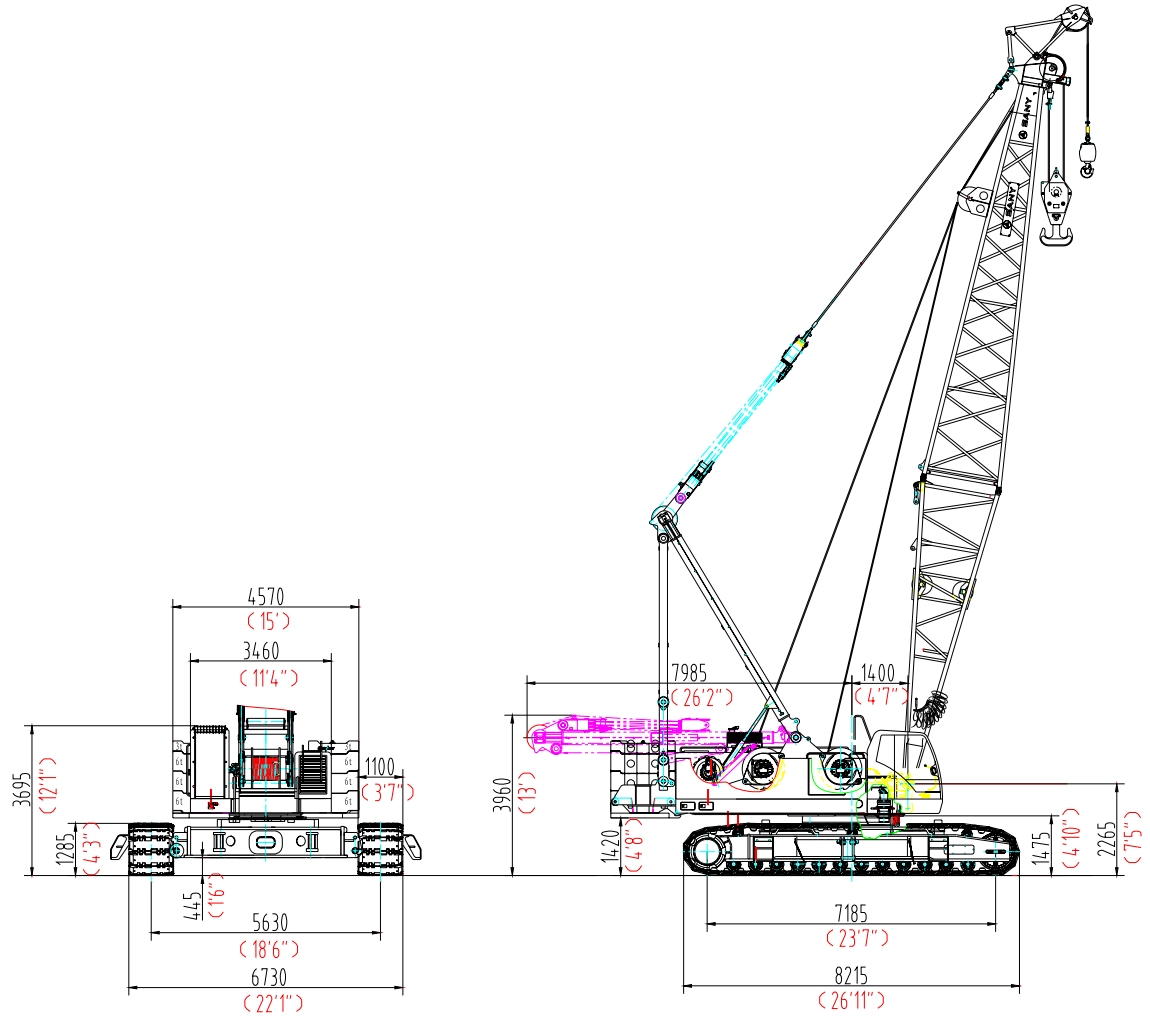
➤ **Illuminator**

Night lighting devices such as winch illuminator, dipped light in front of the driver's cab, angle adjustable high beam and head lamp in driver's cab shall be set so as to improve safety for construction during night.

➤ **Rearview mirror**

The mirrors shall be respectively set at the right side of the driver's cab and the front handrail of the left cover.

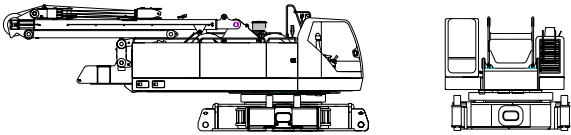
◆ Outline dimensions



Main Dimensions of SCC1500C Hydraulic Crawler Crane

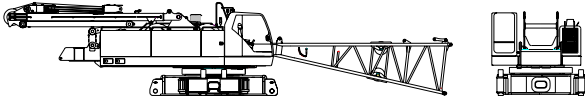


SCC1500C Hydraulic Crawler Crane



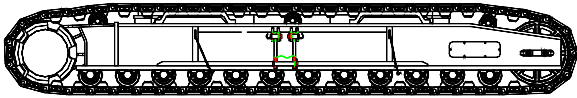
Main Body ×1

Length	10.3m	33'10"
Width	3.5m	11'6"
Height	3.5m	11'6"
Weight	50,000kg	110,000lb



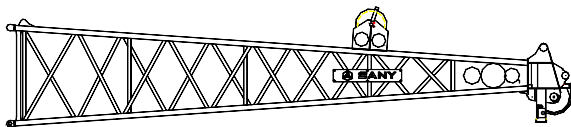
Main Body ×1

Length	17m	55'9"
Width	3.5m	11'6"
Height	3.5m	11'6"
Weight	54,000kg	119,000lb



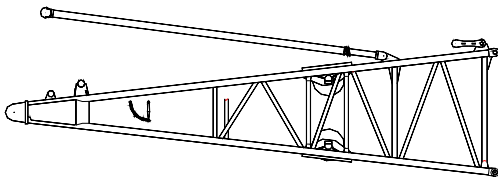
Track assembly ×2

Length	8.3m	27'3"
Width	1.1m	3'7"
Height	1.3m	4'3"
Weight	22,000kg	48,500lb



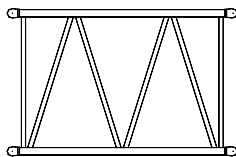
Boom tip ×1

Length	11m	36'1"
Width	2.3m	7'7"
Height	2.4m	7'10"
Weight	2,400kg	5,300lb



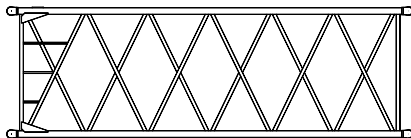
Boom Base ×1

Length	7.8m	25'7"
Width	2.3m	7'7"
Height	2.2m	7'3"
Weight	3,400kg	7,500lb



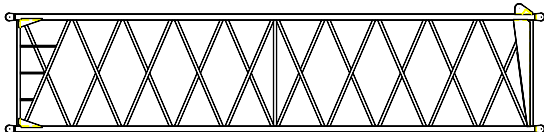
Boom insert 3m(9'10") ×1

Length	3.2m	10'6"
Width	2.3m	7'7"
Height	2.1m	6'11"
Weight	500kg	1,100lb



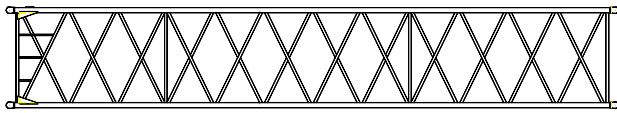
Boom insert 6m(19'8") ×3

Length	6.2m	20'4"
Width	2.3m	7'7"
Height	2.1m	6'11"
Weight	750kg	1,650lb



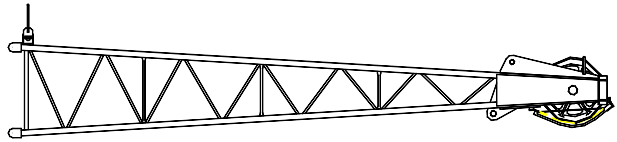
Boom insert 9m(29'6") ×1

Length	9.2m	30'2"
Width	2.3m	7'7"
Height	2.2m	7'3"
Weight	1,100kg	2,400lb



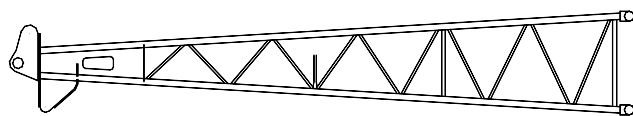
Boom insert 12m(39'4") ×2

Length	12.2m	40'
Width	2.3m	7'7"
Height	2.1m	6'11"
Weight	1,300kg	2,900lb



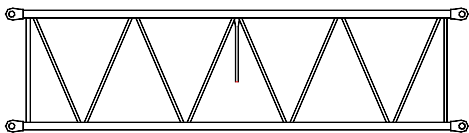
Jib tip ×1

Length	5.5m	18'1"
Width	1.1m	3'7"
Height	1.2m	3'11"
Weight	300kg	661lb



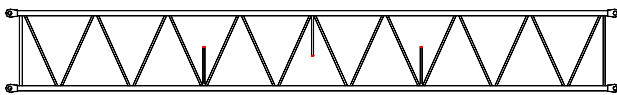
Jib Base ×1

Length	5.2m	17'1"
Width	1.1m	3'7"
Height	0.83m	2'9"
Weight	300kg	661lb



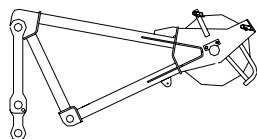
Jib insert 3m(9'10") ×1

Length	3.1m	10'2"
Width	1.1m	3'7"
Height	0.83m	2'9"
Weight	200kg	441lb



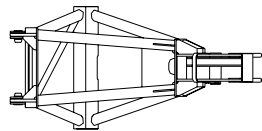
Jib insert 6m(19'8") ×3

Length	6.1m	20'0"
Width	1.1m	3'7"
Height	0.83m	2'9"
Weight	250kg	551lb



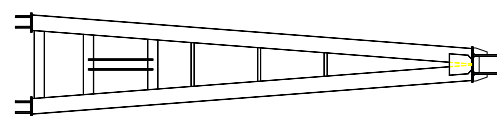
Boom extension ×1

Length	2.2m	7'3"
Width	2.2m	7'3"
Height	1.1m	3'7"
Weight	450kg	992lb



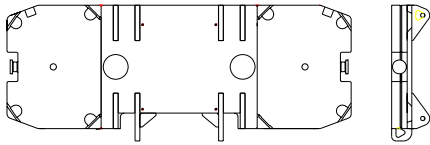
Pole bracket of jib ×1

Length	5.5m	18'1"
Width	1.2m	3'11"
Height	0.21m	0'8"
Weight	400kg	882lb

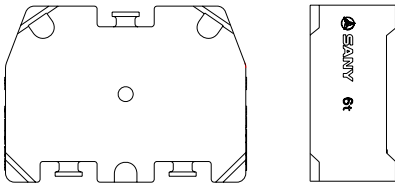




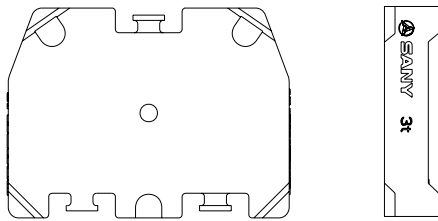
SCC1500C Hydraulic Crawler Crane



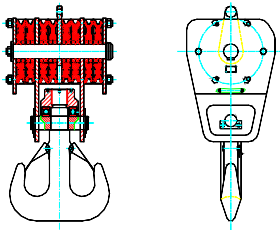
Pallet		×1
Length	4.5m	14'9"
Width	1.8m	5'11"
Height	0.49m	1'7"
Weight	11,400kg	25,100lb



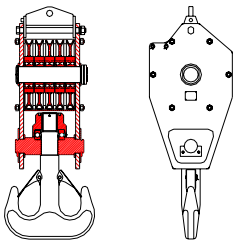
Counterweight		×6
Length	1.6m	5'3"
Width	1.2m	3'11"
Height	0.57m	1'10"
Weight	6,000kg	13,200lb



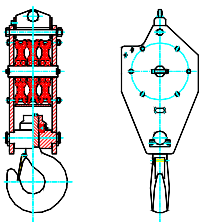
Counterweight		×6
Length	1.6m	5'3"
Width	1.2m	3'11"
Height	0.31m	1'0"
Weight	3,000kg	6,600lb



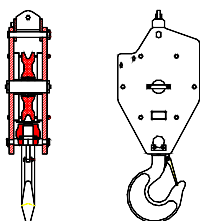
150t(165USSt) Hook		×1
Length	0.88m	2'11"
Width	1.1m	3'7"
Height	2.2m	7'3"
Weight	2,700kg	6,000lb



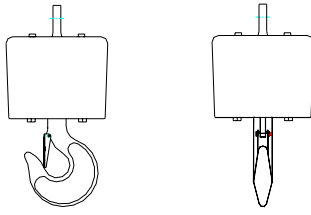
100t(110USSt) Hook		×1
Length	0.8m	2'7"
Width	0.74m	2'5"
Height	2.1m	6'11"
Weight	1,700kg	3,700lb



50t(55USSt) Hook		×1
Length	0.72m	2'4"
Width	0.41m	1'4"
Height	2m	6'7"
Weight	960kg	2,100lb



25t(28USSt) Hook		×1
Length	0.72m	2'4"
Width	0.37m	1'3"
Height	1.7m	5'7"
Weight	830kg	1,800lb



13.5t(15USSt) Hook		×1
Length	0.47m	1'7"
Width	0.47m	1'7"
Height	0.93m	3'1"
Weight	430kg	950lb

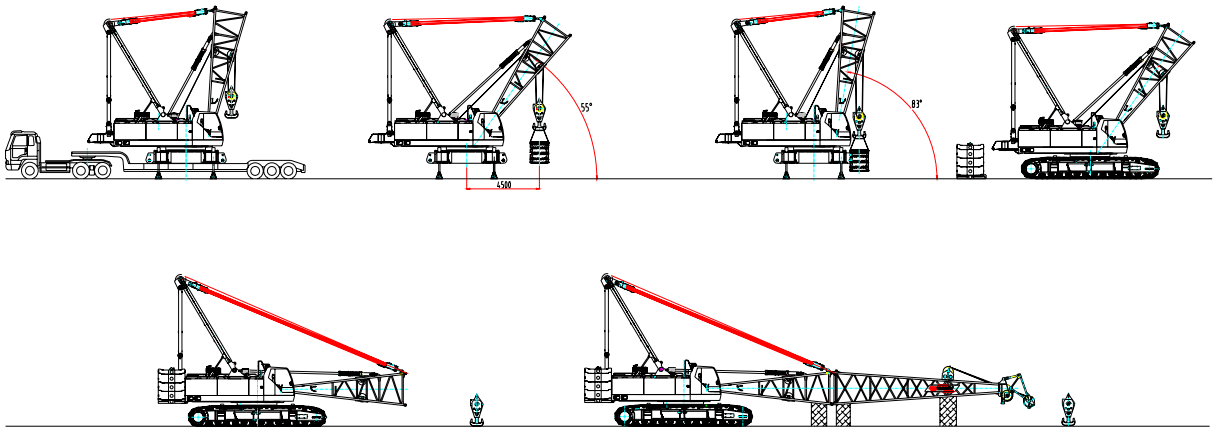
Note:

1. The transportation dimension of parts is sketch map, which was not drawn according to the proportion. The dimension in the sketch is the design value excluding package.

2. The weight is design value and there may be difference caused by manufacture error.

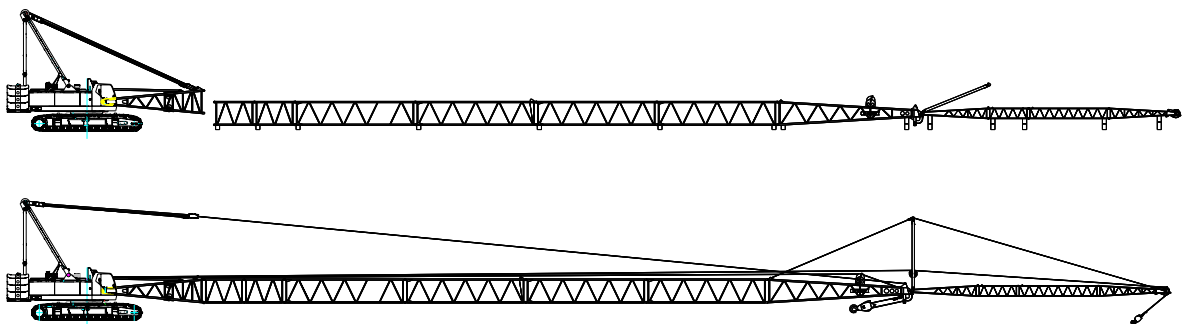
◆ Self assembly and disassembly

This crane is equipped with functions including the self-assembly and disassembly of track traveling mechanism. In the course of assembly, the track traveling mechanism should be assembled firstly and then the counterweight. In the course of disassembly, the counterweight should be disassembled firstly and then the track traveling mechanism. See the figure for detailed operation procedures.



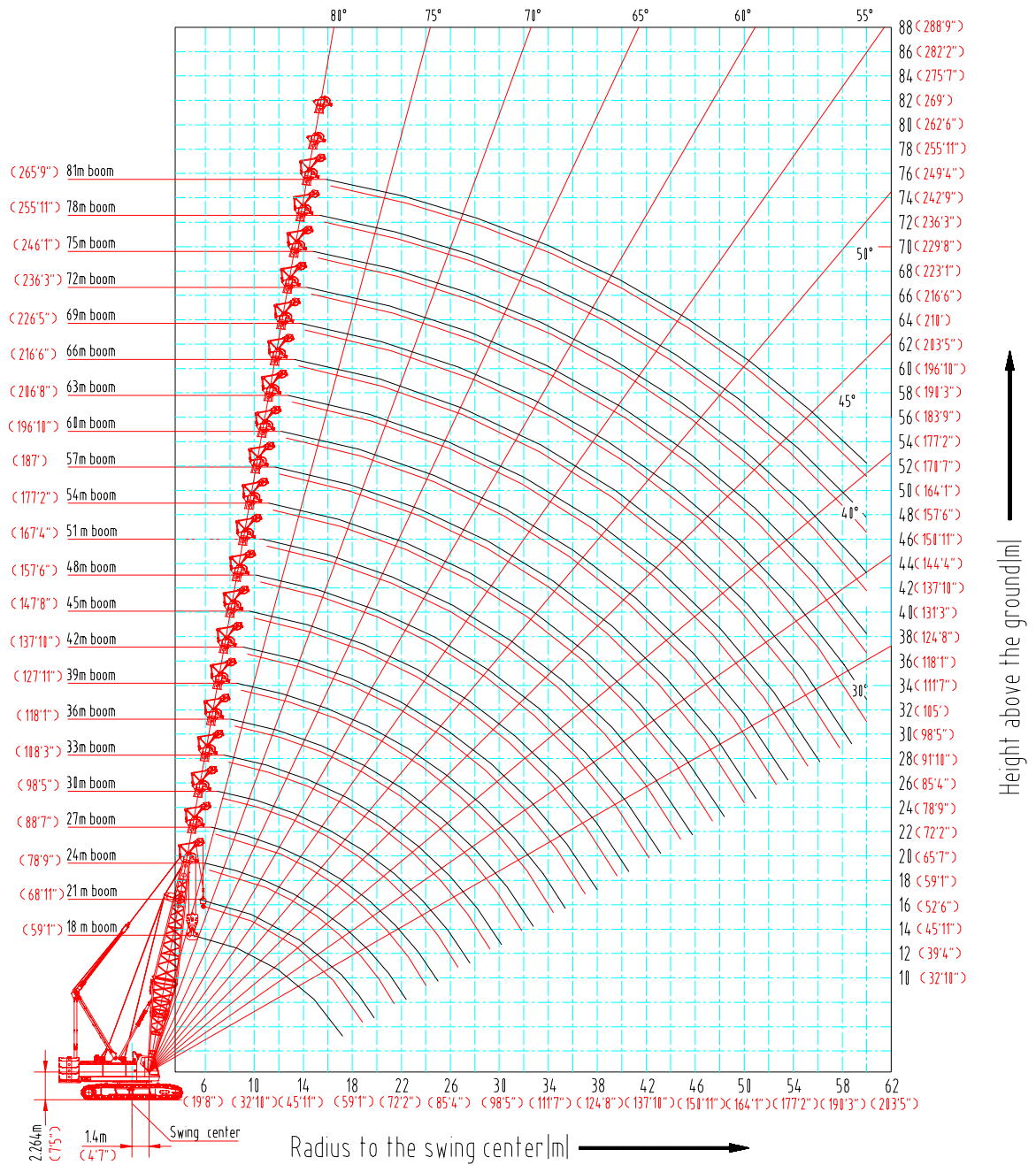
Schematic diagram of self assembly (perform reverse procedure for disassembly)

◆ Fixed jib assembly



Schematic Diagram of Fixed Jib Assembly

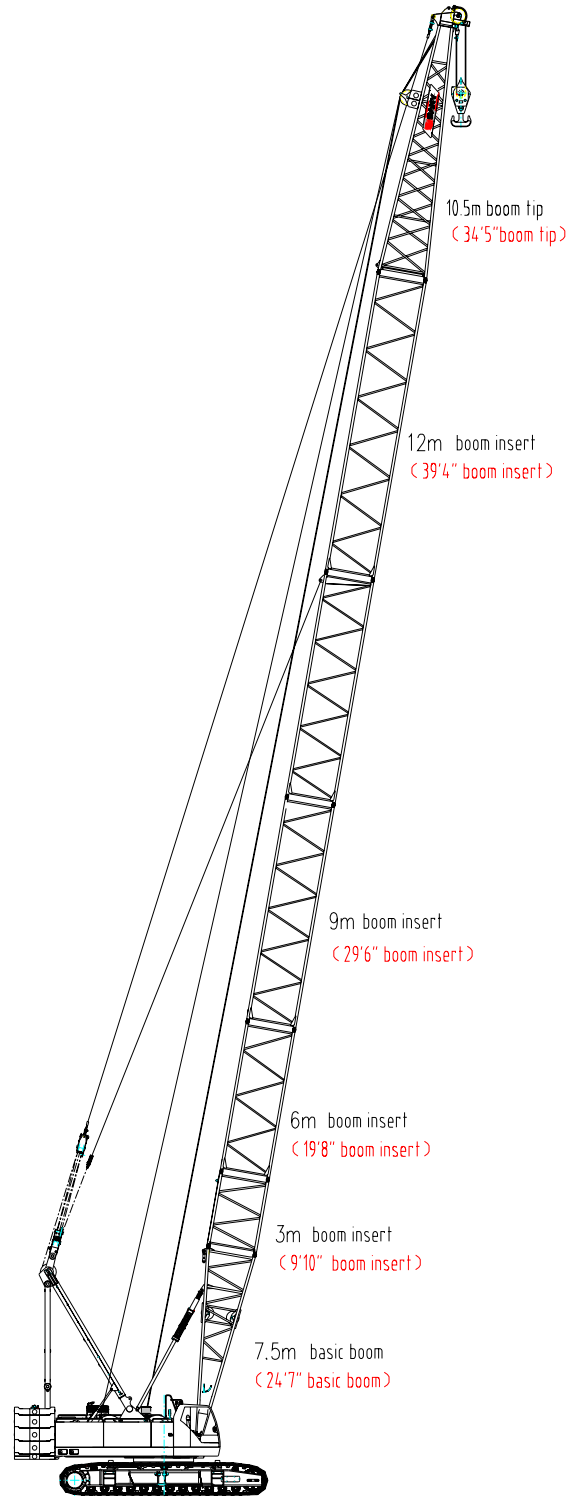
◆ Main boom range diagram



Curve of Hoisting Height Scope of SCC1500C Hydraulic Crawler Crane

◆ Main boom combinations

Boom length m(ft)	Boom insert			
	3m (9'10")	6m (19'8")	9m (29'6")	12m (39'4")
18(59'1")	-	-	-	-
21(68'11")	1	-	-	-
24(78'9")	-	1	-	-
27(88'7")	1	1	-	-
30(98'5")	1	-	1	-
	-	2	-	-
33(108'3")	1	2	-	-
	-	1	1	-
36(118'1")	1	1	1	-
39(127'11")	1	1	-	1
	1	-	2	-
42(137'10")	-	2	1	-
	1	2	1	-
45(147'8")	1	-	1	1
	-	1	2	-
48(157'6")	1	1	2	-
51(167'4")	1	1	1	1
	1	-	2	1
54(177'2")	-	2	1	1
	1	2	1	1
57(187')	1	-	1	2
	-	2	-	2
60(196'10")	1	2	1	2
	1	1	1	2
63(206'8")	1	-	2	2
	1	2	2	1
66(216'6")	1	2	1	2
	1	1	2	2
69(226'5")	1	3	2	1
	-	2	2	2
72(236'3")	1	3	1	2
	1	2	2	2
75(246'1")	-	3	2	2
78(255'11")	1	3	2	2
81(265'9")	-	3	2	2





◆ Main boom load charts

Note:

1. The rated loads in the table represent the maximum values when slowly and smoothly hoisting a weight on a horizontal and hardy soil surface under non-traveling hoisting working state.

2. The rated loads in the table were calculated under the condition that the wind speed was lower than 9.8m/s(22 mph) and according to 75% of the tilting load.

3. The unit of the value of load is kg(lb). Actual hoisting weight is the value of rated load in the table deducing weight of all hoisting implements such as hoisting hook block on main winch and Aux. winch. The weight of the hook block is as follows:

150t (165USt) hook—2,650kg (5,840lb)	100t (110USt) hook—1.65kg (3,640lb)
50t (55USt) hook—960kg (2,120lb)	25t (27.6USt) hook—830kg (1,830lb)
13.5t (15USt) hook—430kg (950lb)	

4. All values in the load table apply to 360°swing.

5. The length of main boom for the allowed counterweight is 18m~81m(59'1"~265'9").

6. The additional counterweight 53,000kg (116,800lb)+12,000kg (26,500lb) is an optional operation mode, but not standard operation mode. The length of main boom for the allowed additional counterweight is 45m~81m(147'8"~265'9").



Boom load charts 1/5									kg(lb)×1000
Length m(ft) Radius m(ft)	18 (59'1")	21 (68'11")	24 (78'9")	27 (88'7")	30 (98'5")	33 (108'3")	36 (118'1")	39 (127'11")	
5 (16'5")	155/4.94m (341.7/16'2")	135.3/5.46m (298.3/17'11")							
6 (19'8")	144.0 (317.5)	129.8 (286.2)	120.3/5.95m (265.2/19'6")	106.1/6.5m (233.9/21'4")					
7 (22'12")	124.5 (274.5)	118.2 (260.6)	107.8 (237.7)	101.8 (224.4)	95.7 (211)	85.8/7.54m (189.2/24'9")			
8 (26'3")	99.7 (219.8)	99.6 (219.6)	99.4 (219.1)	99.2 (218.7)	90.1 (198.6)	83.9 (185)	77.9/8.07m (171.7/26'6")	70.8/8.58m (156.1/28'2")	
9 (29'6")	83.0 (183)	82.8 (182.5)	82.7 (182.3)	82.4 (181.7)	82.3 (181.4)	82.0 (180.8)	74.7 (164.7)	68.7 (151.5)	
10 (32'10")	70.9 (156.3)	70.8 (156.1)	70.6 (155.6)	70.4 (155.2)	70.2 (154.8)	70.0 (154.3)	69.8 (153.9)	64.8 (142.9)	
11 (36'1")	61.9 (136.5)	61.7 (136)	61.5 (135.6)	61.3 (135.1)	61.1 (134.7)	60.9 (134.3)	60.7 (133.8)	61.1 (134.7)	
12 (39'4")	54.8 (120.8)	54.6 (120.4)	54.5 (120.2)	54.2 (119.5)	54.1 (119.3)	53.8 (118.6)	53.6 (118.2)	53.4 (117.7)	
13 (42'8")	49.1 (108.2)	48.9 (107.8)	48.8 (107.6)	48.5 (106.9)	48.4 (106.7)	48.1 (106)	47.9 (105.6)	47.8 (105.4)	
14 (45'11")	44.5 (98.1)	44.3 (97.7)	44.1 (97.2)	43.8 (96.6)	43.7 (96.3)	43.4 (95.7)	43.3 (95.5)	43.1 (95)	
15 (49'3")	40.6 (89.5)	40.4 (89.1)	40.2 (88.6)	40.0 (88.2)	39.8 (87.7)	39.5 (87.1)	39.4 (86.9)	39.2 (86.4)	
16 (52'6")	37.3 (82.2)	37.1 (81.8)	36.9 (81.3)	36.7 (80.9)	36.5 (80.5)	36.2 (79.8)	36.1 (79.6)	35.9 (79.1)	
17 (55'9")	34/17.19m (75/56'5")	34.3 (75.6)	34.1 (75.2)	33.8 (74.5)	33.7 (74.3)	33.4 (73.6)	33.2 (73.2)	33.0 (72.8)	
18 (59'1")		31.8 (70.1)	31.7 (69.9)	31.4 (69.2)	31.2 (68.8)	31.0 (68.3)	30.8 (67.9)	30.6 (67.5)	
19 (62'4")		29.7 (65.5)	29.5 (65)	29.2 (64.4)	29.1 (64.2)	28.8 (63.5)	28.6 (63.1)	28.4 (62.6)	
20 (65'7")		28.1/19.8m (61.9/64'12")	27.6 (60.8)	27.3 (60.2)	27.2 (60)	26.9 (59.3)	26.7 (58.9)	26.5 (58.4)	
21 (68'11")			25.9 (57.1)	25.6 (56.4)	25.5 (56.2)	25.2 (55.6)	25.0 (55.1)	24.8 (54.7)	
22 (72'2")			23.9/22.4m (52.7/73'6")	24.1 (53.1)	24.0 (52.9)	23.7 (52.2)	23.5 (51.8)	23.3 (51.4)	
23 (75'6")				22.8 (50.3)	22.6 (49.8)	22.3 (49.2)	22.2 (48.9)	22.0 (48.5)	
24 (78'9")				21.5 (47.4)	21.4 (47.2)	21.1 (46.5)	20.9 (46.1)	20.7 (45.6)	
26 (85'4")				20.4/25m (45/82'0")	19.2 (42.3)	18.9 (41.7)	18.8 (41.4)	18.6 (41)	
28 (91'10")					17.8/27.6m (39.2/90'7")	17.1 (37.7)	17.0 (37.5)	16.8 (37)	
30 (98'5")						15.5/30.2m (34.2/99'1")	15.4 (34)	15.2 (33.5)	
32 (104'12")							14.1 (31.1)	13.9 (30.6)	
34 (111'7")							13.6/32.8m (30/107'7")	12.7 (28)	
36 (118'1")								12/35.38m (26.5/116'1")	
38 (124'8")									
40 (131'3")									
42 (137'10")									
44 (144'4")									
Counterweight kg(lb)×1000	53 (116.8)	53 (116.8)	53 (116.8)	53 (116.8)	53 (116.8)	53 (116.8)	53 (116.8)	53 (116.8)	
Multiplying - power	14	12	10	9	8	7	6	6	



Boom load charts 2/5										kg(lb)×1000
Length m(ft) Radius m(ft)	42 (137'10")	45 (147'8")		48 (157'6")		51 (167'4")		54 (177'2")		
9 (29'6")	64.5/9.1m (142.2/29'10")	58.7/9.63m (129.4/31'7")	58.7/9.63m (129.4/31'7")							
10 (32'10")	62.2 (137.1)	57.9 (127.6)	57.9 (127.6)	54/10.1m (119/33'2")	54/10.1m (119/33'2")	49.3/10.6m (108.7/34'9")	49.3/10.6m (108.7/34'9")			
11 (36'1")	57.8 (127.4)	56.7 (125)	56.7 (125)	52.5 (115.7)	52.5 (115.7)	48.3 (106.5)	48.3 (106.5)	45.5/11.2m (100.3/36'9")	45.5/11.2m (100.3/36'9")	
12 (39'4")	53.3 (117.5)	53.1 (117.1)	55.5 (122.4)	50.9 (112.2)	50.9 (112.2)	47.2 (104.1)	47.2 (104.1)	44.2 (97.4)	44.2 (97.4)	
13 (42'8")	47.6 (104.9)	47.4 (104.5)	54.3 (119.7)	47.2 (104.1)	49.5 (109.1)	45.5 (100.3)	45.5 (100.3)	43.0 (94.8)	43.0 (94.8)	
14 (45'11")	42.9 (94.6)	42.7 (94.1)	49.0 (108)	42.5 (93.7)	48.1 (106)	42.3 (93.3)	43.8 (96.6)	42.1 (92.8)	42.5 (93.7)	
15 (49'3")	39.0 (86)	38.8 (85.5)	44.6 (98.3)	38.6 (85.1)	44.3 (97.7)	38.4 (84.7)	42.1 (92.8)	38.1 (84)	40.6 (89.5)	
16 (52'6")	35.7 (78.7)	35.5 (78.3)	40.8 (89.9)	35.3 (77.8)	40.6 (89.5)	35.1 (77.4)	40.4 (89.1)	34.8 (76.7)	38.7 (85.3)	
17 (55'9")	32.9 (72.5)	32.7 (72.1)	37.6 (82.9)	32.5 (71.6)	37.4 (82.5)	32.3 (71.2)	37.2 (82)	32.0 (70.5)	36.9 (81.3)	
18 (59'1")	30.4 (67)	30.2 (66.6)	34.8 (76.7)	30.0 (66.1)	34.6 (76.3)	29.8 (65.7)	34.4 (75.8)	29.5 (65)	34.1 (75.2)	
19 (62'4")	28.3 (62.4)	28.1 (61.9)	32.4 (71.4)	27.8 (61.3)	32.1 (70.8)	27.6 (60.8)	31.9 (70.3)	27.4 (60.4)	31.7 (69.9)	
20 (65'7")	26.4 (58.2)	26.2 (57.8)	30.2 (66.6)	25.9 (57.1)	30.0 (66.1)	25.7 (56.7)	29.8 (65.7)	25.5 (56.2)	29.5 (65)	
21 (68'11")	24.7 (54.5)	24.5 (54)	28.3 (62.4)	24.2 (53.4)	28.1 (31)	24.0 (52.9)	27.9 (61.5)	23.8 (52.5)	27.6 (60.8)	
22 (72'2")	23.2 (51.1)	23.0 (50.7)	26.6 (58.6)	22.7 (50)	26.3 (29)	22.5 (49.6)	26.1 (57.5)	22.2 (48.9)	25.9 (57.1)	
23 (75'6")	21.8 (48.1)	21.6 (47.6)	25.1 (55.3)	21.3 (47)	24.8 (54.7)	21.1 (46.5)	24.6 (54.2)	20.9 (46.1)	24.3 (53.6)	
24 (78'9")	20.6 (45.4)	20.4 (45)	23.7 (52.2)	20.1 (44.3)	23.4 (51.6)	19.9 (43.9)	23.2 (51.1)	19.6 (43.2)	22.9 (50.5)	
26 (85'4")	18.4 (40.6)	18.2 (40.1)	21.2 (46.7)	18.0 (39.7)	21.0 (46.3)	17.8 (39.2)	20.8 (45.9)	17.5 (38.6)	20.5 (45.2)	
28 (91'10")	16.6 (36.6)	16.4 (36.2)	19.2 (42.3)	16.1 (35.5)	18.9 (41.7)	15.9 (35.1)	18.7 (41.2)	15.7 (34.6)	18.4 (40.6)	
30 (98'5")	15.1 (33.3)	14.9 (32.8)	17.4 (38.4)	14.6 (32.2)	17.2 (37.9)	14.4 (31.7)	17.0 (37.5)	14.1 (31.1)	16.7 (36.8)	
32 (104'12")	13.7 (30.2)	13.5 (29.8)	15.9 (35.1)	13.3 (29.3)	15.7 (34.6)	13.1 (28.9)	15.5 (34.2)	12.8 (28.2)	15.2 (33.5)	
34 (111'7")	12.6 (27.8)	12.4 (27.3)	14.6 (32.2)	12.1 (26.7)	14.3 (31.5)	11.9 (26.2)	14.1 (31.1)	11.6 (25.6)	13.9 (30.6)	
36 (118'1")	11.6 (25.6)	11.3 (24.9)	13.4 (29.5)	11.1 (24.5)	13.2 (29.1)	10.9 (24)	13.0 (28.7)	10.6 (23.4)	12.7 (28)	
38 (124'8")	10.7/37.95m (23.6/124'6")	10.4 (22.9)	12.4 (27.3)	10.2 (22.5)	12.2 (26.9)	10.0 (22)	12.0 (26.5)	9.7 (21.4)	11.7 (25.8)	
40 (131'3")		9.4/40.58m (20.7/133'2")	11.3/40.58m (24.9/133'2")	9.4 (20.7)	11.3 (24.9)	9.2 (20.3)	11.0 (24.3)	8.9 (19.6)	10.8 (23.8)	
42 (137'10")				8.7 (19.2)	10.4 (22.9)	8.5 (18.7)	10.2 (22.5)	8.2 (18.1)	9.9 (21.8)	
44 (144'4")				8.3/43.2m (18.3/141'9")	10.0/43.2m (22'141'9")	7.3/45.75m (16.1/150'1")	8.9/45.75m (19.6/150'1")	7.5 (16.5)	9.2 (20.3)	
46 (150'11")								6.9 (15.2)	8.5 (18.7)	
48 (157'6")								6.2/48.38m (13.7/158'9")	7.8/48.38m (17.2/158'9")	
Counterweight kg(lb)×1000	53 (116.8)	53 (116.8)	53+12 (116.8+26.5)	53 (116.8)	53+12 (116.8+26.5)	53 (116.8)	53+12 (116.8+26.5)	53 (116.8)	53+12 (116.8+26.5)	
Multiplying - power	5	5	5	5	5	4	4	4	4	



Boom load charts 3/5									kg(lb)×1000
Length m(ft) Radius m(ft)	57 (187'0")		60 (196'10")		63 (206'8")		66 (216'6")		
	11 (36'1")	41.8/11.7m (92.2/38'5")	41.8/11.7m (92.2/38'5")						
12 (39'4")	41.4 (91.3)	41.4 (91.3)	39.2/12.2m (86.4/40'0")	39.2/12.2m (86.4/40'0")					
13 (42'8")	40.1 (88.4)	40.1 (88.4)	37.9 (83.6)	37.9 (83.6)	35/12.75m (77.2/41'10")	35/12.75m (77.2/41'10")	31.5/13.2m (69.4/43'4")	31.5/13.2m (69.4/43'4")	
14 (45'11")	38.7 (85.3)	38.7 (85.3)	36.7 (80.9)	36.7 (80.9)	33.6 (74.1)	33.6 (74.1)	30.9 (68.1)	30.9 (68.1)	
15 (49'3")	38.0 (83.8)	37.9 (83.6)	35.0 (77.2)	35.0 (77.2)	32.2 (71)	32.2 (71)	29.8 (65.6)	29.8 (65.7)	
16 (52'6")	34.7 (76.5)	36.6 (80.7)	33.3 (73.4)	33.3 (73.4)	30.8 (67.9)	30.8 (67.9)	28.6 (63.1)	28.6 (63.1)	
17 (55'9")	31.8 (70.1)	35.2 (77.6)	31.6 (69.7)	32.2 (71)	29.4 (64.8)	29.4 (64.8)	27.5 (60.6)	27.5 (60.6)	
18 (59'1")	29.3 (64.6)	33.9 (74.7)	29.2 (64.4)	31.2 (68.8)	28.0 (61.7)	28.0 (61.7)	26.4 (58.2)	26.4 (58.2)	
19 (62'4")	27.2 (60)	31.5 (69.4)	27.0 (59.5)	30.1 (66.4)	26.8 (59.1)	27.5 (60.6)	25.2 (55.6)	25.2 (55.6)	
20 (65'7")	25.3 (55.8)	29.3 (64.6)	25.1 (55.3)	29.1 (64.2)	24.9 (54.9)	27.0 (59.5)	24.0 (52.9)	24.0 (52.9)	
21 (68'11")	23.6 (52)	27.4 (60.4)	23.4 (51.6)	27.2 (60)	23.2 (51.1)	26.1 (57.5)	22.9 (50.5)	23.5 (51.8)	
22 (72'2")	22.1 (48.7)	25.7 (56.7)	21.9 (48.3)	25.5 (56.2)	21.6 (47.6)	25.3 (55.8)	21.4 (47.2)	23.0 (50.7)	
23 (75'6")	20.7 (45.6)	24.1 (53.1)	20.5 (45.2)	23.9 (52.7)	20.3 (44.8)	23.7 (52.2)	20.0 (44.1)	22.5 (49.6)	
24 (78'9")	19.5 (43)	22.7 (50)	19.3 (42.5)	22.5 (49.6)	19.0 (41.9)	22.3 (49.2)	18.8 (41.4)	22.1 (48.7)	
26 (85'4")	17.3 (38.1)	20.3 (44.8)	17.1 (37.7)	20.1 (44.3)	16.9 (37.3)	19.9 (43.9)	16.6 (36.6)	19.6 (43.2)	
28 (91'10")	15.5 (34.2)	18.3 (40.3)	15.3 (33.7)	18.0 (39.7)	15.1 (33.3)	17.8 (39.2)	14.8 (32.6)	17.6 (38.8)	
30 (98'5")	13.9 (30.6)	16.5 (36.4)	13.7 (30.2)	16.3 (35.9)	13.5 (29.8)	16.1 (35.5)	13.3 (29.3)	15.8 (34.8)	
32 (104'12")	12.6 (27.8)	15.0 (33.1)	12.4 (27.3)	14.8 (32.6)	12.2 (26.9)	14.6 (32.2)	11.9 (26.2)	14.3 (31.5)	
34 (111'7")	11.4 (25.1)	13.7 (30.2)	11.2 (24.7)	13.5 (29.8)	11.0 (24.3)	13.3 (29.3)	10.8 (23.8)	13.0 (28.7)	
36 (118'1")	10.4 (22.9)	12.5 (27.6)	10.2 (22.5)	12.3 (27.1)	10.0 (22)	12.1 (26.7)	9.8 (21.6)	11.9 (26.2)	
38 (124'8")	9.5 (20.9)	11.5 (25.4)	9.3 (20.5)	11.3 (24.9)	9.1 (20.1)	11.1 (24.5)	8.9 (19.6)	10.8 (23.8)	
40 (131'3")	8.7 (19.2)	10.6 (23.4)	8.5 (18.7)	10.4 (22.9)	8.3 (18.3)	10.2 (22.5)	8.0 (17.6)	9.9 (21.8)	
42 (137'10")	8.0 (17.6)	9.8 (21.6)	7.8 (17.2)	9.6 (21.2)	7.6 (16.8)	9.3 (20.5)	7.3 (16.1)	9.1 (20.1)	
44 (144'4")	7.3 (16.1)	9.0 (19.8)	7.1 (15.7)	8.8 (19.4)	6.8 (15)	8.6 (19)	6.6 (14.6)	8.4 (18.5)	
46 (150'11")	6.7 (14.8)	8.3 (18.3)	6.5 (14.3)	8.1 (17.9)	6.2 (13.7)	7.9 (17.4)	5.9 (13)	7.7 (17)	
48 (157'6")	6.1 (13.4)	7.7 (17)	5.9 (13)	7.5 (16.5)	5.6 (12.3)	7.3 (16.1)	5.3 (11.7)	7.0 (15.4)	
50 (164'0")	5.3/50.97m (11.7/167'3")	6.9/50.97m (15.2/167'3")	5.3 (11.7)	6.9 (15.2)	5.1 (11.2)	6.7 (14.8)	4.8 (10.6)	6.4 (14.1)	
52 (170'7")			4.8 (10.6)	6.4 (14.1)	4.6 (10.1)	6.1 (13.4)	4.3 (9.5)	5.8 (12.8)	
54 (177'2")			4.5/53.57m (9.9/175'9")	6.0/53.57m (13.2/175'9")	4.1 (9)	5.6 (12.3)	3.8 (8.4)	5.3 (11.7)	
56 (183'9")					3.7/56.16m (8.2/184'3")	5.1/56.16m (11.2/184'3")	3.4 (7.5)	4.8 (10.6)	
58 (190'3")							2.9/58.8m (6.4/192'11")	4.2/58.8m (9.3/192'11")	
Counterweight kg(lb)×1000	53 (116.8)	53+12 (116.8+26.5)	53 (116.8)	53+12 (116.8+26.5)	53 (116.8)	53+12 (116.8+26.5)	53 (116.8)	53+12 (116.8+26.5)	
Multiplying - power	4	4	4	4	3	3	3	3	



Boom load charts 4/5

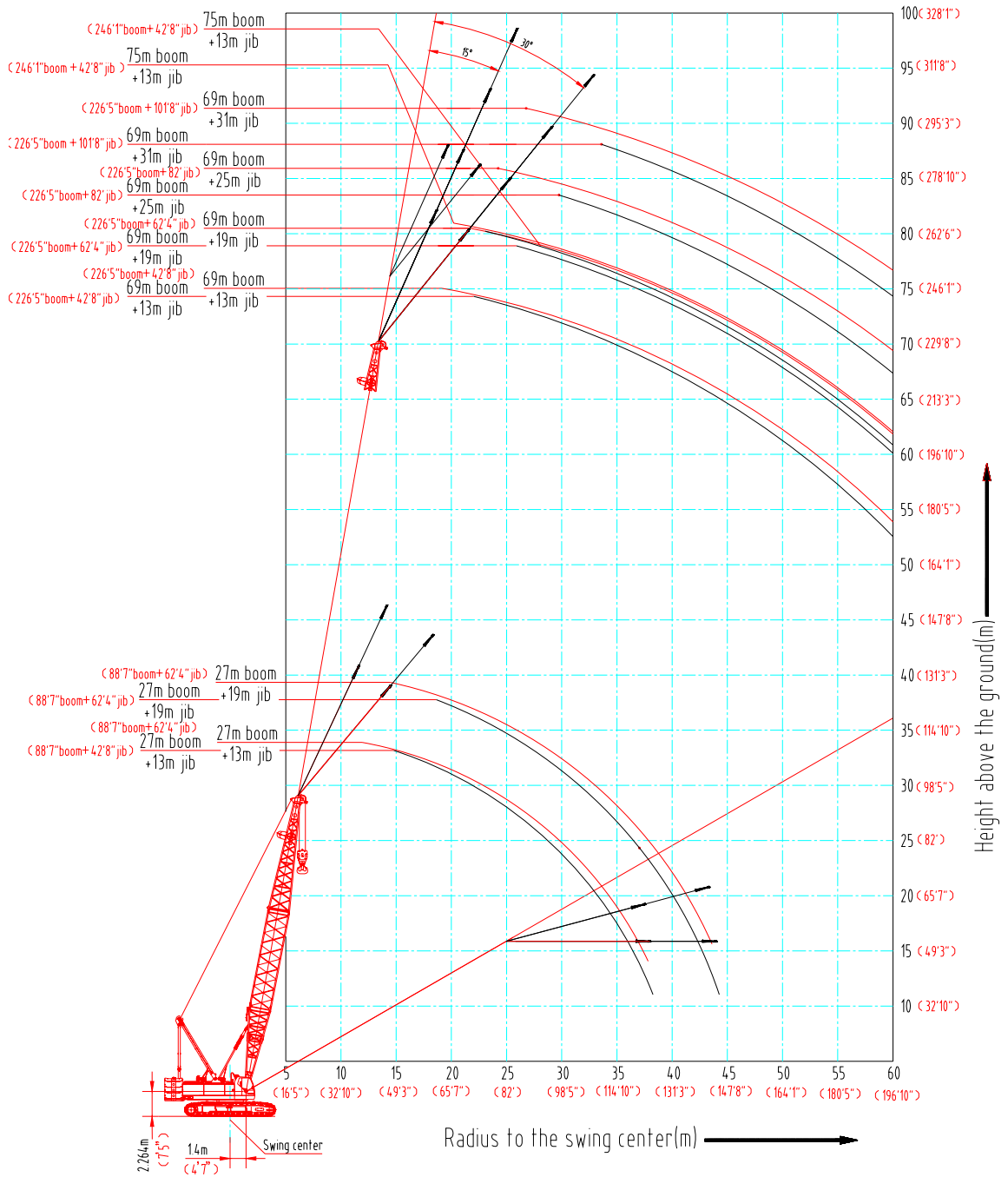
kg(lb)×1000

Length m(ft) Radius m(ft)	69 (226'5")		72 (236'3")		75 (246'1")		78 (255'11")	
	14 (45'11")	28.3/13.8m (62.4/45'3")	28.3/13.8m (62.4/45'3")	25.5/14.3m (56.2/46'11")	25.5/14.3m (56.2/46'11")			
15 (49'3")	27.3 (60.2)	27.3 (60.2)	24.9 (54.9)	24.9 (54.9)	22.7/14.8m (50/48'7")	22.7/14.8m (50/48'7")	22/15.3m (48.5/50'2")	22/15.3m (48.5/50'2")
16 (52'6")	26.5 (58.4)	26.5 (58.4)	24.3 (53.6)	24.3 (53.6)	22.1 (48.7)	22.1 (48.7)	21.4 (47.1)	21.4 (47.2)
17 (55'9")	25.6 (56.3)	25.6 (56.3)	23.6 (52)	23.6 (52)	21.6 (47.6)	21.6 (47.6)	20.9 (46)	20.9 (46.1)
18 (59'1")	24.6 (54.2)	24.6 (54.2)	22.9 (50.4)	22.9 (50.5)	21.1 (46.5)	21.1 (46.5)	20.4 (45)	20.4 (45)
19 (62'4")	23.7 (52.1)	23.7 (52.1)	22.1 (48.8)	22.1 (48.7)	20.6 (45.4)	20.6 (45.4)	19.9 (43.9)	19.9 (43.9)
20 (65'7")	22.7 (50)	22.7 (50)	21.4 (47.2)	21.4 (47.2)	20.1 (44.3)	20.1 (44.3)	19.4 (42.8)	19.4 (42.8)
21 (68'11")	21.8 (48)	21.8 (48)	20.7 (45.5)	20.7 (45.6)	19.6 (43.1)	19.6 (43.1)	18.9 (41.6)	18.9 (41.7)
22 (72'2")	20.8 (45.9)	20.8 (45.9)	19.9 (43.9)	19.9 (43.9)	19.0 (41.9)	19.0 (41.9)	18.4 (40.5)	18.4 (40.6)
23 (75'6")	19.8 (43.7)	20.3 (44.8)	19.2 (42.3)	19.2 (42.3)	18.5 (40.7)	18.5 (40.7)	17.8 (39.3)	17.8 (39.2)
24 (78'9")	18.6 (41)	19.8 (43.7)	18.3 (40.3)	18.5 (40.8)	17.9 (39.5)	17.9 (39.5)	17.3 (38.1)	17.3 (38.1)
26 (85'4")	16.4 (36.2)	18.6 (41)	16.2 (35.7)	17.8 (39.2)	16.0 (35.3)	17.0 (37.5)	15.7 (34.6)	16.5 (36.4)
28 (91'10")	14.6 (32.2)	17.4 (38.4)	14.4 (31.7)	17.1 (37.7)	14.2 (31.3)	16.1 (35.5)	13.9 (30.6)	15.6 (34.4)
30 (98'5")	13.1 (28.9)	15.6 (34.4)	12.8 (28.2)	15.4 (34)	12.6 (27.8)	15.2 (33.5)	12.4 (27.3)	14.9 (32.8)
32 (104'12")	11.7 (25.8)	14.1 (31.1)	11.5 (25.4)	13.9 (30.6)	11.3 (24.9)	13.7 (30.2)	11.0 (24.3)	13.4 (29.5)
34 (111'7")	10.6 (23.4)	12.8 (28.2)	10.3 (22.7)	12.6 (27.8)	10.1 (22.3)	12.3 (27.1)	9.9 (21.8)	12.1 (26.7)
36 (118'1")	9.5 (20.9)	11.6 (25.6)	9.3 (20.5)	11.4 (25.1)	9.1 (20.1)	11.2 (24.7)	8.8 (19.4)	10.9 (24)
38 (124'8")	8.6 (19)	10.6 (23.4)	8.4 (18.5)	10.4 (22.9)	8.1 (17.9)	10.1 (22.3)	7.8 (17.2)	9.9 (21.8)
40 (131'3")	7.8 (17.2)	9.7 (21.4)	7.5 (16.5)	9.4 (20.7)	7.2 (15.9)	9.2 (20.3)	6.9 (15.2)	9.0 (19.8)
42 (137'10")	7.0 (15.4)	8.9 (19.6)	6.7 (14.8)	8.6 (19)	6.4 (14.1)	8.4 (18.5)	6.2 (13.7)	8.1 (17.9)
44 (144'4")	6.3 (13.9)	8.1 (17.9)	6.0 (13.2)	7.8 (17.2)	5.7 (12.6)	7.6 (16.8)	5.4 (11.9)	7.3 (16.1)
46 (150'11")	5.6 (12.3)	7.4 (16.3)	5.4 (11.9)	7.1 (15.7)	5.1 (11.2)	6.8 (15)	4.8 (10.6)	6.5 (14.3)
48 (157'6")	5.1 (11.2)	6.7 (14.8)	4.8 (10.6)	6.4 (14.1)	4.5 (9.9)	6.2 (13.7)	4.2 (9.3)	5.9 (13)
50 (164'0")	4.5 (9.9)	6.1 (13.4)	4.2 (9.3)	5.8 (12.8)	4.0 (8.8)	5.6 (12.3)	3.7 (8.2)	5.3 (11.7)
52 (170'7")	4.0 (8.8)	5.6 (12.3)	3.7 (8.2)	5.3 (11.7)	3.5 (7.7)	5.0 (11)	3.2 (7.1)	4.7 (10.4)
54 (177'2")	3.6 (7.9)	5.0 (11)	3.3 (7.3)	4.8 (10.6)	3.0 (6.6)	4.5 (9.9)	2.7 (6)	4.2 (9.3)
56 (183'9")	3.2 (7.1)	4.6 (10.1)	2.9 (6.4)	4.3 (9.5)	2.6 (5.7)	4.0 (8.8)	2.3 (5.1)	3.7 (8.2)
58 (190'3")	2.8 (6.2)	4.1 (9)	2.5 (5.5)	3.8 (8.4)	2.2 (4.9)	3.6 (7.9)	1.9 (4.2)	3.3 (7.3)
60 (196'10")	2.4 (5.3)	3.7 (8.2)	2.1 (4.6)	3.4 (7.5)	1.8 (4)	3.2 (7.1)	1.5 (3.3)	2.9 (6.4)
Counterweight kg(lb)×1000	53 (116.8)	53+12 (116.8+26.5)	53 (116.8)	53+12 (116.8+26.5)	53 (116.8)	53+12 (116.8+26.5)	53 (116.8)	53+12 (116.8+26.5)
Multiplying - power	3	3	2	2	2	2	2	2



Boom load charts 5/5			kg(lb)×1000		
Length m(ft) Radius m(ft)	81 (265'9")		Length m(ft) Radius m(ft)	81 (265'9")	
16 (52'6")	20.6 (45.4)	20.6 (45.4)	36 (118'1")	8.6 (19)	10.7 (23.6)
17 (55'9")	20.2 (44.5)	20.2 (44.5)	38 (124'8")	7.6 (16.8)	9.7 (21.4)
18 (59'1")	19.7 (43.4)	19.7 (43.4)	40 (131'3")	6.7 (14.8)	8.7 (19.2)
19 (62'4")	19.2 (42.3)	19.2 (42.3)	42 (137'10")	5.9 (13)	7.8 (17.2)
20 (65'7")	18.7 (41.2)	18.7 (41.2)	44 (144'4")	5.2 (11.5)	7.0 (15.4)
21 (68'11")	18.2 (40.1)	18.2 (40.1)	46 (150'11")	4.5 (9.9)	6.3 (13.9)
22 (72'2")	17.7 (39)	17.7 (39)	48 (157'6")	4.0 (8.8)	5.6 (12.3)
23 (75'6")	17.2 (37.9)	17.2 (37.9)	50 (164'0")	3.4 (7.5)	5.0 (11)
24 (78'9")	16.7 (36.8)	16.7 (36.8)	52 (170'7")	2.9 (6.4)	4.5 (9.9)
26 (85'4")	15.5 (34.2)	16.0 (35.3)	54 (177'2")	2.5 (5.5)	3.9 (8.6)
28 (91'10")	13.7 (30.2)	15.4 (34)	56 (183'9")	2.0 (4.4)	3.5 (7.7)
30 (98'5")	12.2 (26.9)	14.7 (32.4)	58 (190'3")	1.7 (3.7)	3.0 (6.6)
32 (104'12")	10.8 (23.8)	13.2 (14.6)	60 (196'10")	1.3 (2.9)	2.6 (5.7)
34 (111'7")	9.7 (21.4)	11.9 (26.2)	Counterweight kg(lb)×1000	53 (116.8)	53+12 (116.8+26.5)
Counterweight kg(lb)×1000	53 (116.8)	53+12 (116.8+26.5)	Multiplying - power	2	2
Multiplying - power	2	2			

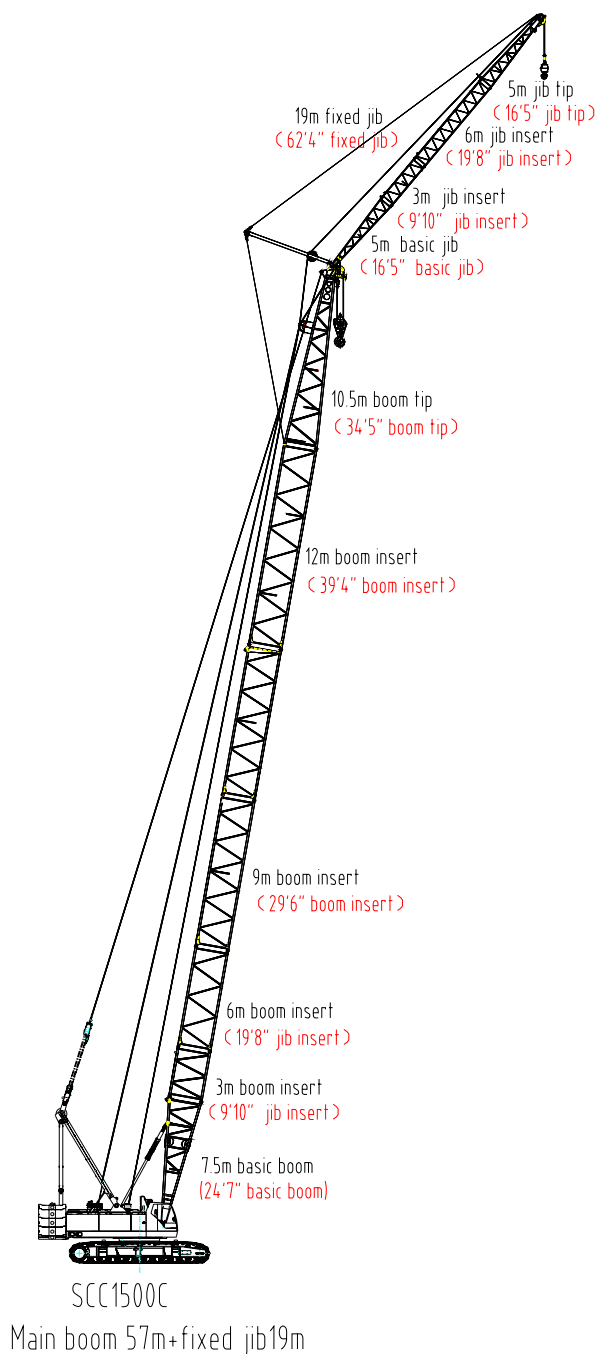
◆ Fixed jib range diagram



Curve of Hoisting Height Scope of Fixed Jib of SCC1500C Hydraulic Crawler Crane

◆ Fixed jib combinations

Fixed Jib Length m(ft)	Fixed Jib inserts		Main Boom Length m (ft)	Angle between boom and jib
	3 m (9'10")	6 m (19'8")		
13(42'8")	1	-	27~75(88'7"~246'1")	15°, 30°
19(62'4")	1	1	27~69(88'7"~226'5")	15°, 30°
25(82')	1	2	33~69(108'3"~226'5")	15°, 30°
31(101'8")	1	3	39~69(108'3"~226'5")	15°, 30°





◆ Fixed jib load chart

Fixed jib load charts 1/12									kg(lb)×1000
Boom length m(ft)	27 (88'7")				30 (98'5")				
Jib length m(ft)	13 (42'8")		19 (62'4")		13 (42'8")		19 (62'4")		
Jib angle	15°	30°	15°	30°	15°	30°	15°	30°	
Radius m(ft)									
12 (39'4")	13.0/12.3m (28.7/40'4")				13.0/12.9m (28.7/42'4")				
14 (45'11")	13.0 (28.7)	9.0/15.1m (19.8/49'6")	8.0/14.9m (17.6/48'11")		13.0 (28.7)	9.0/15.7m (19.8/51'6")	8.0/15.5m (17.6/50'10")		
16 (52'6")	13.0 (28.7)	9.0 (19.8)	8.0 (17.6)		13.0 (28.7)	9.0 (19.8)	8.0 (17.6)		
18 (59'1")	13.0 (28.7)	9.0 (19.8)	8.0 (17.6)	6.0/19.1m (13.2/62'8")	13.0 (28.7)	9.0 (19.8)	8.0 (17.6)	6.0/19.6m (13.2/64'4")	
20 (65'7")	13.0 (28.7)	9.0 (19.8)	8.0 (17.6)	6.0 (13.2)	13.0 (28.7)	9.0 (19.8)	8.0 (17.6)	6.0 (13.2)	
22 (72'2")	13.0/23.2m (28.7/76'1")	9.0 (19.8)	8.0 (17.6)	6.0 (13.2)	13.0 (28.7)	9.0 (19.8)	8.0 (17.6)	6.0 (13.2)	
24 (78'9")	12.7 (28)	9.0 (19.8)	8.0 (17.6)	6.0 (13.2)	13.0/24.8m (28.7/81'4")	9.0 (19.8)	8.0 (17.6)	6.0 (13.2)	
26 (85'4")	12.3/24.9m (27.1/81'8")	9.0/24.9m (19.8/81'8")	8.0/24.9m (17.6/81'8")	6.0/24.9m (13.2/81'8")	12.5 (27.6)	9.0 (19.8)	8.0 (17.6)	6.0 (13.2)	
28 (91'10")					11.9/27.5m (26.2/90'3")	9.0/27.5m (19.8/90'3")	8.0/27.5m (17.6/90'3")	6.0/27.5m (13.2/90'3")	
Counterweight kg(lb)×1000	53 (116.8)	53 (116.8)	53 (116.8)	53 (116.8)	53 (116.8)	53 (116.8)	53 (116.8)	53 (116.8)	

Boom length m(ft)	33 (108'3")						
Jib length m(ft)	13 (42'8")		19 (62'4")		25 (82'0")		
Jib angle	15°	30°	15°	30°	15°	30°	
Radius m(ft)							
12 (39'4")	13.0/13.4m (28.7/43'12")						
14 (45'11")	13.0 (28.7)						
16 (52'6")	13.0 (28.7)	9.0/16.3m (19.8/53'6")	8.0/16.1m (17.6/52'10")				
18 (59'1")	13.0 (28.7)	9.0 (9.9)	8.0 (8.8)		5.0/18.7m (11/61'4")		
20 (65'7")	13.0 (28.7)	9.0 (19.8)	8.0 (17.6)	6.0/20.2m (13.2/66'3")	5.0 (11)		
22 (72'2")	13.0 (28.7)	9.0 (19.8)	8.0 (17.6)	6.0 (13.2)	5.0 (11)		
24 (78'9")	13.0 (28.7)	9.0 (19.8)	8.0 (17.6)	6.0 (13.2)	5.0 (11)	4.6/24.2m (10.1/79'5")	
26 (85'4")	13.0 (28.7)	9.0 (19.8)	8.0 (17.6)	6.0 (13.2)	5.0 (11)	4.6 (10.1)	
28 (91'10")	12.3 (27.1)	9.0 (19.8)	8.0 (17.6)	6.0 (13.2)	5.0 (11)	4.6 (10.1)	
30 (98'5")	11.6/30.1m (25.6/98'9")	9.0/30.1m (19.8/98'9")	8.0/30.1m (17.6/98'9")	6.0/30.1m (13.2/98'9")	5.0/30.1m (11/98'9")	4.6/30.1m (10.1/98'9")	
Counterweight kg(lb)×1000	53 (116.8)	53 (116.8)	53 (116.8)	53 (116.8)	53 (116.8)	53 (116.8)	



Fixed jib load charts 2/12								kg(lb)×1000	
Boom length m(ft)	36 (118'1")								
Jib length m(ft)	13 (42'8")		19 (62'4")		25 (82'0")				
Jib angle	15°	30°	15°	30°	15°	30°			
Radius m(ft)									
12 (39'4")									
14 (45'11")	13.0/14.1m (28.7/46'3")								
16 (52'6")	13.0 (28.7)	9.0/16.9m (19.8/55'5")	8.0/16.7m (17.6/54'9")						
18 (59'1")	13.0 (28.7)	9.0 (19.8)	8.0 (17.6)		5.0/19.3m (11/63'4")				
20 (65'7")	13.0 (28.7)	9.0 (19.8)	8.0 (17.6)	6.0/20.8m (13.2/68'3")	5.0 (11)				
22 (72'2")	13.0 (28.7)	9.0 (19.8)	8.0 (17.6)	6.0 (13.2)	5.0 (11)				
24 (78'9")	13.0 (28.7)	9.0 (19.8)	8.0 (17.6)	6.0 (13.2)	5.0 (11)	4.6/24.7m (10.1/81'0")			
26 (85'4")	13.0/27.6m (28.7/90'7")	9.0 (19.8)	8.0 (17.6)	6.0 (13.2)	5.0 (11)	4.6 (10.1)			
28 (91'10")	12.8 (28.2)	9.0 (19.8)	8.0 (17.6)	6.0 (13.2)	5.0 (11)	4.6 (10.1)			
30 (98'5")	12.2 (26.9)	9.0 (19.8)	8.0 (17.6)	6.0 (13.2)	5.0 (11)	4.6 (10.1)			
32 (85'4")	11.6 (25.6)	9.0 (19.8)	8.0 (17.6)	6.0 (13.2)	5.0 (11)	4.6 (10.1)			
34 (111'7")	11.4/32.7m (25.1/107'3")	9.0/32.7m (19.8/107'3")	8.0/32.7m (17.6/107'3")	6.0/32.7m (13.2/107'3")	5.0/32.7m (11/107'3")	4.6/32.7m (10.1/107'3")			
36 (118'1")									
Counterweight kg(lb)×1000	53 (116.8)	53 (116.8)	53 (116.8)	53 (116.8)	53 (116.8)	53 (116.8)			

Fixed jib load charts 2/12									kg(lb)×1000	
Boom length m(ft)	39 (127'11")									
Jib length m(ft)	13 (42'8")		19 (62'4")		25 (82'0")		31 (101'8")			
Jib angle	15°	30°	15°	30°	15°	30°	15°	30°		
Radius m(ft)										
14 (45'11")	13.0/14.6m (28.7/47'11")									
16 (52'6")	13.0 (28.7)	9.0/17.4m (19.8/57'1")	8.0/17.2m (17.6/56'5")							
18 (59'1")	13.0 (28.7)	9.0 (19.8)	8.0 (17.6)		5.0/19.9m (11/65'3")					
20 (65'7")	13.0 (28.7)	9.0 (19.8)	8.0 (17.6)	6.0/21.4m (13.2/70'3")	5.0 (11)					
22 (72'2")	13.0 (28.7)	9.0 (19.8)	8.0 (17.6)	6.0 (13.2)	5.0 (11)		3.0/22.5m (6.6/73'10")			
24 (78'9")	13.0 (28.7)	9.0 (19.8)	8.0 (17.6)	6.0 (13.2)	5.0 (11)	4.6/25.3m (10.1/83'0")	3.0 (6.6)			
26 (85'4")	13.0 (28.7)	9.0 (19.8)	8.0 (17.6)	6.0 (13.2)	5.0 (11)	4.6 (10.1)	3.0 (6.6)			
28 (91'10")	13.0/29.0m (28.7/95'2")	9.0 (19.8)	8.0 (17.6)	6.0 (13.2)	5.0 (11)	4.6 (10.1)	3.0 (6.6)	2.6/29.2m (5.7/95'10")		
30 (98'5")	12.7 (28)	9.0 (19.8)	8.0 (17.6)	6.0 (13.2)	5.0 (11)	4.6 (10.1)	3.0 (6.6)	2.6 (5.7)		
32 (85'4")	12.1 (26.7)	9.0 (19.8)	8.0 (17.6)	6.0 (13.2)	5.0 (11)	4.6 (10.1)	3.0 (6.6)	2.6 (5.7)		
34 (111'7")	11.5 (25.4)	9.0 (19.8)	8.0 (17.6)	6.0 (13.2)	5.0 (11)	4.6 (10.1)	3.0 (6.6)	2.6 (5.7)		
36 (118'1")	10.9/35.3m (24/115'10")	9.0/35.3m (19.8/115'10")	8.0/35.3m (17.6/115'10")	6.0/35.3m (13.2/115'10")	5.0/35.3m (11/115'10")	4.6/35.3m (10.1/115'10")	3.0/35.3m (6.6/115'10")	2.6/35.3m (5.7/115'10")		
Counterweight kg(lb)×1000	53 (116.8)	53 (116.8)	53 (116.8)	53 (116.8)	53 (116.8)	53 (116.8)	53 (116.8)	53 (116.8)		



Fixed jib load charts 3/12									kg(lb)×1000
Boom length m(ft)	42 (137'10")								
	13 (42'8")		19 (62'4")		25 (82'0")		31 (101'8")		
Jib length m(ft)									
Jib angle	15°		30°		15°		30°		
Radius m(ft)									
16 (52'6")	13.0/15.2m (28.7/49'10")		8.0/17.8m (17.6/58'5")						
18 (59'1")	13.0 (28.7)		8.0 (17.6)						
20 (65'7")	13.0 (28.7)	9.0 (19.8)	8.0 (17.6)	6.0/21.9m (13.2/71'10")	5.0/20.4m (11/66'11")				
22 (72'2")	13.0 (28.7)	9.0 (19.8)	8.0 (17.6)	6.0 (13.2)	5.0 (11)		3.0/23.1m (6.6/75'9")		
24 (78'9")	13.0 (28.7)	9.0 (19.8)	8.0 (17.6)	6.0 (13.2)	5.0 (11)	4.6/25.9m (10.1/84'12")	3.0 (6.6)		
26 (85'4")	13.0 (28.7)	9.0 (19.8)	8.0 (17.6)	6.0 (13.2)	5.0 (11)	4.6 (10.1)	3.0 (6.6)		
28 (91'10")	13.0 (28.7)	9.0 (19.8)	8.0 (17.6)	6.0 (13.2)	5.0 (11)	4.6 (10.1)	3.0 (6.6)	2.6/29.8m (5.7/97'9")	
30 (98'5")	13.0 (28.7)	9.0 (19.8)	8.0 (17.6)	6.0 (13.2)	5.0 (11)	4.6 (10.1)	3.0 (6.6)	2.6 (5.7)	
32 (105'10")	13.0 (28.7)	9.0 (19.8)	8.0 (17.6)	6.0 (13.2)	5.0 (11)	4.6 (10.1)	3.0 (6.6)	2.6 (5.7)	
34 (111'7")	12.3 (27.1)	9.0 (19.8)	8.0 (17.6)	6.0 (13.2)	5.0 (11)	4.6 (10.1)	3.0 (6.6)	2.6 (5.7)	
36 (118'1")	11.3 (24.9)	9.0 (19.8)	8.0 (17.6)	6.0 (13.2)	5.0 (11)	4.6 (10.1)	3.0 (6.6)	2.5 (5.5)	
38 (124'8")	10.4 (22.9)	9.0 (19.8)	8.0/37.9m (17.6/124'4")	6.0/37.9m (13.2/124'4")	5.0/37.9m (11/124'4")	4.6/37.9m (10.1/124'4")	2.9/37.9m (6.4/124'4")	2.4/37.9m (5.3/124'4")	
40 (131'3")	9.0/37.9m (19.8/124'4")	9.0/37.9m (19.8/124'4")							
Counterweight kg(lb)×1000	53 (116.8)	53 (116.8)	53 (116.8)	53 (116.8)	53 (116.8)	53 (116.8)	53 (116.8)	53 (116.8)	

Boom length m(ft)	45 (147'8")							
	13 (42'8")				19 (62'4")			
Jib length m(ft)								
Jib angle	15°		30°		15°		30°	
Radius m(ft)								
14 (45'11")	13.0/15.7m (28.7/51'6")	13.0/15.7m (28.7/51'6")						
16 (52'6")	13.0 (28.7)	13.0 (28.7)						
18 (59'1")	13.0 (28.7)	13.0 (28.7)	9.0/18.6m (19.8/61'0")	9.0/18.6m (19.8/61'0")	8.0/18.4m (17.6/60'4")	8.0/18.4m (17.6/60'4")		
20 (65'7")	13.0 (28.7)	13.0 (28.7)	9.0 (19.8)	9.0 (19.8)	8.0 (17.6)	8.0 (17.6)		
22 (72'2")	13.0 (28.7)	13.0 (28.7)	9.0 (19.8)	9.0 (19.8)	8.0 (17.6)	8.0 (17.6)	6.0/22.5m (13.2/73'10")	6.0/22.5m (13.2/73'10")
24 (78'9")	13.0 (28.7)	13.0 (28.7)	9.0 (19.8)	9.0 (19.8)	8.0 (17.6)	8.0 (17.6)	6.0 (13.2)	6.0 (13.2)
26 (85'4")	13.0 (28.7)	13.0 (28.7)	9.0 (19.8)	9.0 (19.8)	8.0 (17.6)	8.0 (17.6)	6.0 (13.2)	6.0 (13.2)
28 (91'10")	13.0 (28.7)	13.0 (28.7)	9.0 (19.8)	9.0 (19.8)	8.0 (17.6)	8.0 (17.6)	6.0 (13.2)	6.0 (13.2)
30 (98'5")	13.0/30.7m (28.7/100'9")	13.0 (28.7)	9.0 (19.8)	9.0 (19.8)	8.0 (17.6)	8.0 (17.6)	6.0 (13.2)	6.0 (13.2)
32 (105'10")	12.2 (26.9)	13.0 (28.7)	9.0 (19.8)	9.0 (19.8)	8.0 (17.6)	8.0 (17.6)	6.0 (13.2)	6.0 (13.2)
34 (111'7")	11.2 (24.7)	13.0/33.5m (28.7/109'11")	9.0 (19.8)	9.0 (19.8)	8.0 (17.6)	8.0 (17.6)	6.0 (13.2)	6.0 (13.2)
36 (118'1")	10.3 (22.7)	11.8 (26)	9.0 (19.8)	9.0 (19.8)	8.0 (17.6)	8.0 (17.6)	6.0 (13.2)	6.0 (13.2)
38 (124'8")	9.5 (20.9)	10.9 (24)	9.0/39.5m (9.9/129'7")	9.0 (19.8)	8.0 (17.6)	8.0 (17.6)	6.0 (13.2)	6.0 (13.2)
40 (131'3")	8.8 (19.4)	10.1 (22.3)	8.8 (19.4)	9.0 (19.8)	8.0 (17.6)	8.0 (17.6)	6.0 (13.2)	6.0 (13.2)
42 (137'10")	8.6/40.5m (19/132'10")	9.9/40.5 (21.8/131'3")	8.6/40.5m (19/132'10")	9.0/40.5m (19.8/132'10")	8.0/40.5m (17.6/132'10")	8.0/40.5m (17.6/132'10")	6.0/40.5m (13.2/132'10")	6.0/40.5m (13.2/132'10")
Counterweight kg(lb)×1000	53 (116.8)	53+12 (116.8+26.5)	53 (116.8)	53+12 (116.8+26.5)	53 (116.8)	53+12 (116.8+26.5)	53 (116.8)	53+12 (116.8+26.5)



Fixed jib load charts 4/12									kg(lb)×1000
Boom length m(ft)	45 (147'8")								
	25 (82'0")				31 (101'8")				
Jib length m(ft)	15°				30°				
Jib angle	15°		30°		15°		30°		
Radius m(ft)	15°		30°		15°		30°		
18 (59'1")									
20 (65'7")	5.0/21.0m (11/68'11")	5.0/21.0m (11/68'11")							
22 (72'2")	5.0 (11)	5.0 (11)			3.0/23.6m (6.6/77'5")	3.0/23.6m (6.6/77'5")			
24 (78'9")	5.0 (11)	5.0 (11)			3.0 (6.6)	3.0 (6.6)			
26 (85'4")	5.0 (11)	5.0 (11)	4.6/26.4m (10.1/86'7")	4.6/26.4m (10.1/86'7")	3.0 (6.6)	3.0 (6.6)			
28 (91'10")	5.0 (11)	5.0 (11)	4.6 (10.1)	4.6 (10.1)	3.0 (6.6)	3.0 (6.6)			
30 (98'5")	5.0 (11)	5.0 (11)	4.6 (10.1)	4.6 (10.1)	3.0 (6.6)	3.0 (6.6)	2.4/30.4m (5.3/99'9")	2.4/30.4m (5.3/99'9")	
32 (85'4")	5.0 (11)	5.0 (11)	4.6 (10.1)	4.6 (10.1)	3.0 (6.6)	3.0 (6.6)	2.4 (5.3)	2.4 (5.3)	
34 (111'7")	5.0 (11)	5.0 (11)	4.6 (10.1)	4.6 (10.1)	3.0 (6.6)	3.0 (6.6)	2.4 (5.3)	2.4 (5.3)	
36 (118'1")	5.0 (11)	5.0 (11)	4.6 (10.1)	4.6 (10.1)	3.0 (6.6)	3.0 (6.6)	2.4 (5.3)	2.4 (5.3)	
38 (124'8")	5.0 (11)	5.0 (11)	4.6 (10.1)	4.6 (10.1)	2.9 (6.4)	3.0 (6.6)	2.4 (5.3)	2.4 (5.3)	
40 (131'3")	5.0 (11)	5.0 (11)	4.6 (10.1)	4.6 (10.1)	2.8 (6.2)	3.0 (6.6)	2.4 (5.3)	2.4 (5.3)	
42 (137'10")	5.0/40.5m (11/132'10")	5.0/40.5m (11/132'10")	4.6/40.5m (10.1/132'10")	4.6/40.5m (10.1/132'10")	2.7/40.5m (6/132'10")	3.0/40.5m (6.6/132'10")	2.4/40.5m (5.3/132'10")	2.4/40.5m (5.3/132'10")	
Counterweight kg(lb)×1000	53 (116.8)	53+12 (116.8+26.5)	53 (116.8)	53+12 (116.8+26.5)	53 (116.8)	53+12 (116.8+26.5)	53 (116.8)	53+12 (116.8+26.5)	

Fixed jib load charts 4/12									kg(lb)×1000
Boom length m(ft)	48 (157'6")								
	13 (42'8")				19 (62'4")				
Jib length m(ft)	15°				30°				
Jib angle	15°		30°		15°		30°		
Radius m(ft)	15°		30°		15°		30°		
16 (52'6")	13.0/16.3m (28.7/53'6")	13.0/16.3m (28.7/53'6")							
18 (59'1")	13.0 (28.7)	13.0 (28.7)	9.0/19.1m (19.8/62'8")	9.0/19.1m (19.8/62'8")	8.0/18.9m (17.6/62'0")	8.0/18.9m (17.6/62'0")			
20 (65'7")	13.0 (28.7)	13.0 (28.7)	9.0 (19.8)	9.0 (19.8)	8.0 (17.6)	8.0 (17.6)			
22 (72'2")	13.0 (28.7)	13.0 (28.7)	9.0 (19.8)	9.0 (19.8)	8.0 (17.6)	8.0 (17.6)	6.0/23.1m (13.2/75'9")	6.0/23.1m (13.2/75'9")	
24 (78'9")	13.0 (28.7)	13.0 (28.7)	9.0 (19.8)	9.0 (19.8)	8.0 (17.6)	8.0 (17.6)	6.0 (13.2)	6.0 (13.2)	
26 (85'4")	13.0 (28.7)	13.0 (28.7)	9.0 (19.8)	9.0 (19.8)	8.0 (17.6)	8.0 (17.6)	6.0 (13.2)	6.0 (13.2)	
28 (91'10")	13.0 (28.7)	13.0 (28.7)	9.0 (19.8)	9.0 (19.8)	8.0 (17.6)	8.0 (17.6)	6.0 (13.2)	6.0 (13.2)	
30 (98'5")	13.0/30.5m (28.7/100'1")	13.0 (28.7)	9.0 (19.8)	9.0 (19.8)	8.0 (17.6)	8.0 (17.6)	6.0 (13.2)	6.0 (13.2)	
32 (104'12")	12.1 (26.7)	13.0 (28.7)	9.0 (19.8)	9.0 (19.8)	8.0 (17.6)	8.0 (17.6)	6.0 (13.2)	6.0 (13.2)	
34 (111'7")	11.0 (24.3)	12.7 (28)	9.0 (19.8)	9.0 (19.8)	8.0 (17.6)	8.0 (17.6)	6.0 (13.2)	6.0 (13.2)	
36 (118'1")	10.1 (22.3)	11.6 (25.6)	9.0 (19.8)	9.0 (19.8)	8.0 (17.6)	8.0 (17.6)	6.0 (13.2)	6.0 (13.2)	
38 (124'8")	9.3 (20.5)	10.7 (23.6)	9.0/38.8m (19.8/127'4")	9.0 (19.8)	8.0 (17.6)	8.0 (17.6)	6.0 (13.2)	6.0 (13.2)	
40 (131'3")	8.6 (19)	9.9 (21.8)	8.6 (19)	9.0 (19.8)	8.0 (17.6)	8.0 (17.6)	6.0 (13.2)	6.0 (13.2)	
42 (137'10")	8.0 (17.6)	9.2 (20.3)	8.0 (17.6)	9.0 (19.8)	8.0 (17.6)	8.0 (17.6)	6.0 (13.2)	6.0 (13.2)	
44 (144'4")	7.7/43.1m (17/141'5")	8.9/43.1m (19.6/141'5")	7.7/43.1m (17/141'5")	8.5/43.1m (18.7/141'5")	7.7/43.1m (17/141'5")	8.0/43.1m (17.6/141'5")	6.0/43.1m (13.2/141'5")	6.0/43.1m (13.2/141'5")	
Counterweight kg(lb)×1000	53 (116.8)	53+12 (116.8+26.5)	53 (116.8)	53+12 (116.8+26.5)	53 (116.8)	53+12 (116.8+26.5)	53 (116.8)	53+12 (116.8+26.5)	



Fixed jib load charts 5/12									kg(lb)×1000
Boom length m(ft)	48 (157'6")								
Jib length m(ft)	25 (82'0")				31 (101'8")				
Jib angle	15°		30°		15°		30°		
Radius m(ft)	15°		30°		15°		30°		
20 (65'7")	5.0/21.6m (11/70'10")	5.0/21.6m (11/70'10")							
22 (72'2")	5.0 (11)	5.0 (11)							
24 (78'9")	5.0 (11)	5.0 (11)			3.0/24.2m (6.6/79'5")	3.0/24.2m (6.6/79'5")			
26 (85'4")	5.0 (11)	5.0 (11)	4.6/27.0m (10.1/88'7")	4.6/27.0m (10.1/88'7")	3.0 (6.6)	3.0 (6.6)			
28 (91'10")	5.0 (11)	5.0 (11)	4.6 (10.1)	4.6 (10.1)	3.0 (6.6)	3.0 (6.6)			
30 (98'5")	5.0 (11)	5.0 (11)	4.6 (10.1)	4.6 (10.1)	3.0 (6.6)	3.0 (6.6)	2.6/31.0m (5.7/101'8")	2.6/31.0m (5.7/101'8")	
32 (104'12")	5.0 (11)	5.0 (11)	4.6 (10.1)	4.6 (10.1)	3.0 (6.6)	3.0 (6.6)	2.6 (5.7)	2.6 (5.7)	
34 (111'7")	5.0 (11)	5.0 (11)	4.6 (10.1)	4.6 (10.1)	3.0 (6.6)	3.0 (6.6)	2.6 (5.7)	2.6 (5.7)	
36 (118'1")	5.0 (11)	5.0 (11)	4.6 (10.1)	4.6 (10.1)	3.0 (6.6)	3.0 (6.6)	2.6 (5.7)	2.6 (5.7)	
38 (124'8")	5.0 (11)	5.0 (11)	4.6 (10.1)	4.6 (10.1)	3.0 (6.6)	3.0 (6.6)	2.6 (5.7)	2.6 (5.7)	
40 (131'3")	5.0 (11)	5.0 (11)	4.6 (10.1)	4.6 (10.1)	2.9 (6.4)	3.0 (6.6)	2.5 (5.5)	2.6 (5.7)	
42 (137'10")	5.0 (11)	5.0 (11)	4.6 (10.1)	4.6 (10.1)	2.8 (6.2)	3.0 (6.6)	2.5 (5.5)	2.6 (5.7)	
44 (144'4")	5.0/43.1m (11/141'5")	5.0/43.1m (11/141'5")	4.6/43.1m (10.1/141'5")	4.6/43.1m (10.1/141'5")	2.75/43.1m (6.1/141'5")	3.0/43.1m (6.6/141'5")	2.4/43.1m (5.3/141'5")	2.6/43.1m (5.7/141'5")	
Counterweight kg(lb)×1000	53 (116.8)	53+12 (116.8+26.5)	53 (116.8)	53+12 (116.8+26.5)	53 (116.8)	53+12 (116.8+26.5)	53 (116.8)	53+12 (116.8+26.5)	

Boom length m(ft)	51 (167'4")							
Jib length m(ft)	13 (42'8")				19 (62'4")			
Jib angle	15°		30°		15°		30°	
Radius m(ft)	15°		30°		15°		30°	
16 (52'6")	13.0/16.9m (28.7/55'5")	13.0/16.9m (28.7/55'5")						
18 (59'1")	13.0 (28.7)	13.0 (28.7)	9.0/19.7m (19.8/64'8")	9.0/19.7m (19.8/64'8")	8.0/19.5m (17.6/63'12")	8.0/19.5m (17.6/63'12")		
20 (65'7")	13.0 (28.7)	13.0 (28.7)	9.0 (19.8)	9.0 (19.8)	8.0 (17.6)	8.0 (17.6)		
22 (72'2")	13.0 (28.7)	13.0 (28.7)	9.0 (19.8)	9.0 (19.8)	8.0 (17.6)	8.0 (17.6)	6.0/23.6m (13.2/77'5")	6.0/23.6m (13.2/77'5")
24 (78'9")	13.0 (28.7)	13.0 (28.7)	9.0 (19.8)	9.0 (19.8)	8.0 (17.6)	8.0 (17.6)	6.0 (13.2)	6.0 (13.2)
26 (85'4")	13.0 (28.7)	13.0 (28.7)	9.0 (19.8)	9.0 (19.8)	8.0 (17.6)	8.0 (17.6)	6.0 (13.2)	6.0 (13.2)
28 (91'10")	13.0 (28.7)	13.0 (28.7)	9.0 (19.8)	9.0 (19.8)	8.0 (17.6)	8.0 (17.6)	6.0 (13.2)	6.0 (13.2)
30 (98'5")	13.0/30.1m (28.7/98'9")	13.0 (28.7)	9.0 (19.8)	9.0 (19.8)	8.0 (17.6)	8.0 (17.6)	6.0 (13.2)	6.0 (13.2)
32 (104'12")	11.9 (26.2)	13.0 (28.7)	9.0 (19.8)	9.0 (19.8)	8.0 (17.6)	8.0 (17.6)	6.0 (13.2)	6.0 (13.2)
34 (111'7")	10.9 (24)	12.5 (27.6)	9.0 (19.8)	9.0 (19.8)	8.0 (17.6)	8.0 (17.6)	6.0 (13.2)	6.0 (13.2)
36 (118'1")	10.0 (22)	11.5 (25.4)	9.0 (19.8)	9.0 (19.8)	8.0 (17.6)	8.0 (17.6)	6.0 (13.2)	6.0 (13.2)
38 (124'8")	9.2 (20.3)	10.6 (23.4)	9.0/38.5m (19.8/126'4")	9.0 (19.8)	8.0 (17.6)	8.0 (17.6)	6.0 (13.2)	6.0 (13.2)
40 (131'3")	8.5 (18.7)	9.8 (21.6)	8.5 (18.7)	9.0 (19.8)	8.0/41.3m (17.6/135'6")	8.0 (17.6)	6.0 (13.2)	6.0 (13.2)
42 (137'10")	7.8 (17.2)	9.0 (19.8)	7.8 (17.2)	9.0 (19.8)	7.8 (17.2)	8.0 (17.6)	6.0 (13.2)	6.0 (13.2)
44 (144'4")	7.3 (16.1)	8.4 (18.5)	7.3 (16.1)	8.4 (18.5)	7.3 (16.1)	8.0 (17.6)	6.0 (13.2)	6.0 (13.2)
46 (150'11")	6.8/45.7m (15/149'11")	7.8/45.7m (17.2/149'11")	6.8/45.7m (15/149'11")	7.8/45.7m (17.2/149'11")	6.8/45.7m (15/149'11")	7.8/45.7m (17.2/149'11")	6.0/45.7m (13.2/149'11")	6.0/45.7m (13.2/149'11")
Counterweight kg(lb)×1000	53 (116.8)	53+12 (116.8+26.5)	53 (116.8)	53+12 (116.8+26.5)	53 (116.8)	53+12 (116.8+26.5)	53 (116.8)	53+12 (116.8+26.5)



Fixed jib load charts 6/12										kg(lb)×1000
Boom length m(ft)	51 (167'4")									
	25 (82'0")				31 (101'8")					
	15°		30°		15°		30°			
Jib length m(ft)	15°		30°		15°		30°			
Radius m(ft)	15°		30°		15°		30°			
22 (72'2")	5.0/22.1m (11/72'6")	5.0/22.1m (11/72'6")			3.0/28.4m (6.6/93'2")	3.0/28.4m (6.6/93'2")				
24 (78'9")	5.0 (11)	5.0 (11)			3.0 (6.6)	3.0 (6.6)				
26 (85'4")	5.0 (11)	5.0 (11)	4.6/27.6m (10.1/90'7")	4.6/27.6m (10.1/90'7")	3.0 (6.6)	3.0 (6.6)				
28 (91'10")	5.0 (11)	5.0 (11)	4.6 (10.1)	4.6 (10.1)	3.0 (6.6)	3.0 (6.6)	2.6/31.5m (5.7/103'4")	2.6/31.5m (5.7/103'4")		
30 (98'5")	5.0 (11)	5.0 (11)	4.6 (10.1)	4.6 (10.1)	3.0 (6.6)	3.0 (6.6)	2.6 (5.7)	2.6 (5.7)		
32 (59'1")	5.0 (11)	5.0 (11)	4.6 (10.1)	4.6 (10.1)	3.0 (6.6)	3.0 (6.6)	2.6 (5.7)	2.6 (5.7)		
34 (111'7")	5.0 (11)	5.0 (11)	4.6 (10.1)	4.6 (10.1)	3.0 (6.6)	3.0 (6.6)	2.6 (5.7)	2.6 (5.7)		
36 (118'1")	5.0 (11)	5.0 (11)	4.6 (10.1)	4.6 (10.1)	3.0 (6.6)	3.0 (6.6)	2.6 (5.7)	2.6 (5.7)		
38 (124'8")	5.0 (11)	5.0 (11)	4.6 (10.1)	4.6 (10.1)	3.0 (6.6)	3.0 (6.6)	2.5 (5.5)	2.6 (5.7)		
40 (131'3")	5.0 (11)	5.0 (11)	4.6 (10.1)	4.6 (10.1)	2.9 (6.4)	3.0 (6.6)	2.5 (5.5)	2.6 (5.7)		
42 (137'10")	5.0 (11)	5.0 (11)	4.6 (10.1)	4.6 (10.1)	2.9 (6.4)	3.0 (6.6)	2.4 (5.3)	2.6 (5.7)		
44 (144'4")	5.0 (11)	5.0 (11)	4.6 (10.1)	4.6 (10.1)	2.8/45.7m (6.2/149'11")	3.0/45.7m (6.6/149'11")	2.35/45.7m (5.2/149'11")	2.5/45.7m (5.5/149'11")		
46 (150'11")	5.0/45.7m (11/149'11")	5.0/45.7m (11/149'11")	4.6/45.7m (10.1/149'11")	4.6/45.7m (10.1/149'11")						
Counterweight kg(lb)×1000	53 (116.8)	53+12 (116.8+26.5)	53 (116.8)	53+12 (116.8+26.5)	53 (116.8)	53+12 (116.8+26.5)	53 (116.8)	53+12 (116.8+26.5)		

Fixed jib load charts 6/12										kg(lb)×1000
Boom length m(ft)	54 (177'2")									
	13 (42'8")				19 (62'4")					
	15°		30°		15°		30°			
Jib length m(ft)	15°		30°		15°		30°			
Radius m(ft)	15°		30°		15°		30°			
16 (52'6")	13.0 (28.7)	13.0 (28.7)								
18 (59'1")	13.0 (28.7)	13.0 (28.7)								
20 (65'7")	13.0 (28.7)	13.0 (28.7)	9.0/20.3m (19.8/66'7")	9.0/20.3m (19.8/66'7")	8.0/20.1m (17.6/65'11")	8.0/20.1m (17.6/65'11")				
22 (72'2")	13.0 (28.7)	13.0 (28.7)	9.0 (19.8)	9.0 (19.8)	8.0 (17.6)	8.0 (17.6)				
24 (78'9")	13.0 (28.7)	13.0 (28.7)	9.0 (19.8)	9.0 (19.8)	8.0 (17.6)	8.0 (17.6)	6.0/24.2m (13.2/79'5")	6.0/24.2m (13.2/79'5")		
26 (85'4")	13.0 (28.7)	13.0 (28.7)	9.0 (19.8)	9.0 (19.8)	8.0 (17.6)	8.0 (17.6)	6.0 (13.2)	6.0 (13.2)		
28 (91'10")	13.0 (28.7)	13.0 (28.7)	9.0 (19.8)	9.0 (19.8)	8.0 (17.6)	8.0 (17.6)	6.0 (13.2)	6.0 (13.2)		
30 (98'5")	13.0 (28.7)	13.0 (28.7)	9.0 (19.8)	9.0 (19.8)	8.0 (17.6)	8.0 (17.6)	6.0 (13.2)	6.0 (13.2)		
32 (105'1")	11.8 (26.1)	13.0 (28.7)	9.0 (19.8)	9.0 (19.8)	8.0 (17.6)	8.0 (17.6)	6.0 (13.2)	6.0 (13.2)		
Jib angle	(26)	(28.7)	(19.8)	(19.8)	(17.6)	(17.6)	(13.2)	(13.2)		
34 (111'7")	10.7 (23.6)	12.3 (27.1)	9.0 (19.8)	9.0 (19.8)	8.0 (17.6)	8.0 (17.6)	6.0 (13.2)	6.0 (13.2)		
36 (118'1")	9.8 (21.6)	11.3 (24.9)	9.0 (19.8)	9.0 (19.8)	8.0 (17.6)	8.0 (17.6)	6.0 (13.2)	6.0 (13.2)		
38 (124'8")	9.0 (19.8)	10.4 (22.9)	9.0 (19.8)	9.0 (19.8)	8.0 (17.6)	8.0 (17.6)	6.0 (13.2)	6.0 (13.2)		
40 (131'3")	8.3 (18.3)	9.5 (20.9)	8.3 (18.3)	9.0 (19.8)	8.0/40.9m (17.6/134'2")	8.0 (17.6)	6.0 (13.2)	6.0 (13.2)		
42 (137'10")	7.6 (16.8)	8.7 (19.2)	7.6 (16.8)	8.7 (19.2)	7.6 (16.8)	8.0 (17.6)	6.0 (13.2)	6.0 (13.2)		
44 (144'4")	7.1 (15.7)	8.2 (18.1)	7.1 (15.7)	8.2 (18.1)	7.1 (15.7)	8.0 (17.6)	6.0 (13.2)	6.0 (13.2)		
46 (150'11")	6.5 (14.3)	7.5 (16.5)	6.5 (14.3)	7.5 (16.5)	6.5 (14.3)	7.5 (16.5)	6.0 (13.2)	6.0 (13.2)		
48 (157'6")	6.1 (13.4)	7.0 (15.4)	6.1 (13.4)	7.0 (15.4)	6.1 (13.4)	7.0 (15.4)	6.0 (13.2)	6.0 (13.2)		
50 (164'0")	6.0/48.3m (13.2/158'6")	6.9/48.3m (15.2/158'6")	6.0/48.3m (13.2/158'6")	6.9/48.3m (15.2/158'6")	6.0/48.3m (13.2/158'6")	6.9/48.3m (15.2/158'6")	6.0/48.3m (13.2/158'6")	6.0/48.3m (13.2/158'6")		
Counterweight kg(lb)×1000	53 (116.8)	53+12 (116.8+26.5)	53 (116.8)	53+12 (116.8+26.5)	53 (116.8)	53+12 (116.8+26.5)	53 (116.8)	53+12 (116.8+26.5)		



Fixed jib load charts 7/12									kg(lb)×1000
Boom length m(ft)	54 (177'2")								
Jib length m(ft)	25 (82'0")				31 (101'8")				
Jib angle	15°		30°		15°		30°		
Radius m(ft)									
22 (72'2")	5.0/22.7m (11/74'6")	5.0/22.7m (11/74'6")							
24 (78'9")	5.0 (11)	5.0 (11)			3.0/25.3m (6.6/83'0")	3.0/25.3m (6.6/83'0")			
26 (85'4")	5.0 (11)	5.0 (11)			3.0 (6.6)	3.0 (6.6)			
28 (91'10")	5.0 (11)	5.0 (11)	4.6/28.2m (10.1/92'6")	4.6/28.2m (10.1/92'6")	3.0 (6.6)	3.0 (6.6)			
30 (98'5")	5.0 (11)	5.0 (11)	4.6 (10.1)	4.6 (10.1)	3.0 (6.6)	3.0 (6.6)			
32 (105'10")	5.0 (11)	5.0 (11)	4.6 (10.1)	4.6 (10.1)	3.0 (6.6)	3.0 (6.6)	2.6/32.1m (5.7/105'4")	2.6/32.1m (5.7/105'4")	
34 (111'7")	5.0 (11)	5.0 (11)	4.6 (10.1)	4.6 (10.1)	3.0 (6.6)	3.0 (6.6)	2.6 (5.7)	2.6 (5.7)	
36 (118'1")	5.0 (11)	5.0 (11)	4.6 (10.1)	4.6 (10.1)	3.0 (6.6)	3.0 (6.6)	2.6 (5.7)	2.6 (5.7)	
38 (124'8")	5.0 (11)	5.0 (11)	4.6 (10.1)	4.6 (10.1)	3.0 (6.6)	3.0 (6.6)	2.6 (5.7)	2.6 (5.7)	
40 (131'3")	5.0 (11)	5.0 (11)	4.6 (10.1)	4.6 (10.1)	3.0 (6.6)	3.0 (6.6)	2.6 (5.7)	2.6 (5.7)	
42 (137'10")	5.0 (11)	5.0 (11)	4.6 (10.1)	4.6 (10.1)	2.9 (6.4)	3.0 (6.6)	2.5 (5.5)	2.6 (5.7)	
44 (144'4")	5.0 (11)	5.0 (11)	4.6 (10.1)	4.6 (10.1)	2.9 (6.4)	3.0 (6.6)	2.5 (5.5)	2.6 (5.7)	
46 (150'11")	5.0 (11)	5.0 (11)	4.6 (10.1)	4.6 (10.1)	2.8 (6.2)	3.0 (6.6)	2.4 (5.3)	2.6 (5.7)	
48 (157'6")	5.0 (11)	5.0 (11)	4.6 (10.1)	4.6 (10.1)	2.8 (6.2)	3.0 (6.6)	2.4 (5.3)	2.6 (5.7)	
50 (164'0")	5.0/48.3m (11/158'6")	5.0/48.3m (11/158'6")	4.6/48.3m (10.1/158'6")	4.6/48.3m (10.1/158'6")	2.7/48.3m (6/158'6")	3.0/48.3m (6.6/158'6")	2.3/48.3m (5.1/158'6")	2.6/48.3m (5.7/158'6")	
Counterweight kg(lb)×1000	53 (116.8)	53+12 (116.8+26.5)	53 (116.8)	53+12 (116.8+26.5)	53 (116.8)	53+12 (116.8+26.5)	53 (116.8)	53+12 (116.8+26.5)	
Boom length m(ft)	57 (187'0")								
Jib length m(ft)	13 (42'8")				19 (62'4")				
Jib angle	15°		30°		15°		30°		
Radius m(ft)									
16 (52'6")	13.0 (28.7)	13.0 (28.7)							
18 (59'1")	13.0 (28.7)	13.0 (28.7)	9.0/20.9m (19.8/68'7")	9.0/20.9m (19.8/68'7")	8.0/20.7m (17.6/67'11")	8.0/20.7m (17.6/67'11")			
20 (65'7")	13.0 (28.7)	13.0 (28.7)	9.0 (19.8)	9.0 (19.8)	8.0 (17.6)	8.0 (17.6)			
22 (72'2")	13.0 (28.7)	13.0 (28.7)	9.0 (19.8)	9.0 (19.8)	8.0 (17.6)	8.0 (17.6)	6.0/24.8m (13.2/81'4")	6.0/24.8m (13.2/81'4")	
24 (78'9")	13.0 (28.7)	13.0 (28.7)	9.0 (19.8)	9.0 (19.8)	8.0 (17.6)	8.0 (17.6)	6.0 (13.2)	6.0 (13.2)	
26 (85'4")	13.0/29.8m (28.7/97'9")	13.0 (28.7)	9.0 (19.8)	9.0 (19.8)	8.0 (17.6)	8.0 (17.6)	6.0 (13.2)	6.0 (13.2)	
28 (91'10")	12.8 (28.2)	13.0 (28.7)	9.0 (19.8)	9.0 (19.8)	8.0 (17.6)	8.0 (17.6)	6.0 (13.2)	6.0 (13.2)	
30 (98'5")	11.6 (25.6)	13.0 (28.7)	9.0 (19.8)	9.0 (19.8)	8.0 (17.6)	8.0 (17.6)	6.0 (13.2)	6.0 (13.2)	
32 (105'10")	10.5 (23.1)	12.1 (26.7)	9.0 (19.8)	9.0 (19.8)	8.0 (17.6)	8.0 (17.6)	6.0 (13.2)	6.0 (13.2)	
34 (111'7")	9.6 (21.2)	11.0 (24.3)	9.0/37.4m (19.8/122'8")	9.0 (19.8)	8.0 (17.6)	8.0 (17.6)	6.0 (13.2)	6.0 (13.2)	
36 (118'1")	8.8 (19.4)	10.1 (22.3)	8.8 (19.4)	9.0 (19.8)	8.0 (17.6)	8.0 (17.6)	6.0 (13.2)	6.0 (13.2)	
38 (124'8")	8.1 (17.9)	9.3 (20.5)	8.1 (17.9)	9.0 (19.8)	8.0/40.1m (17.6/131'7")	8.0 (17.6)	6.0 (13.2)	6.0 (13.2)	
40 (131'3")	7.4 (16.3)	8.5 (18.7)	7.4 (16.3)	8.5 (18.7)	7.4 (16.3)	8.0 (17.6)	6.0 (13.2)	6.0 (13.2)	
42 (137'10")	6.9 (15.2)	7.9 (17.4)	6.9 (15.2)	7.9 (17.4)	6.9 (15.2)	7.9 (17.4)	6.0 (13.2)	6.0 (13.2)	
44 (144'4")	6.3 (13.9)	7.2 (15.9)	6.3 (13.9)	7.2 (15.9)	6.3 (13.9)	7.2 (15.9)	6.0/47.5m (13.2/155'10")	6.0 (13.2)	
46 (150'11")	5.9 (13)	6.8 (15)	5.9 (13)	6.8 (15)	5.9 (13)	6.8 (15)	5.9 (13)	6.0 (13.2)	
48 (157'6")	5.5 (12.1)	6.3 (13.9)	5.5 (12.1)	6.3 (13.9)	5.5 (12.1)	6.3 (13.9)	5.5 (12.1)	6.0 (13.2)	
50 (164'0")	5.3/50.9m (11.7/166'12")	6.1/50.9m (13.4/166'12")	5.3/50.9m (11.7/166'12")	6.1/50.9m (13.4/166'12")	5.3/50.9m (11.7/166'12")	6.1/50.9m (13.4/166'12")	5.3/50.9m (11.7/166'12")	6.0/50.9m (13.2/166'12")	
Counterweight kg(lb)×1000	53 (116.8)	53+12 (116.8+26.5)	53 (116.8)	53+12 (116.8+26.5)	53 (116.8)	53+12 (116.8+26.5)	53 (116.8)	53+12 (116.8+26.5)	



Fixed jib load charts 8/12									kg(lb)×1000
Boom length m(ft)	57 (187'0")								
	25 (82'0")				31 (101'8")				
Jib length m(ft)	15°		30°		15°		30°		
Jib angle	15°		30°		15°		30°		
Radius m(ft)	15°		30°		15°		30°		
20 (65'7")	5.0/23.3m (11/76'5")	5.0/23.3m (11/76'5")							
22 (72'2")	5.0 (11)	5.0 (11)			3.0/25.5m (6.6/83'8")	3.0/25.5m (6.6/83'8")			
24 (78'9")	5.0 (11)	5.0 (11)			3.0 (6.6)	3.0 (6.6)			
26 (85'4")	5.0 (11)	5.0 (11)	4.6/28.7m (10.1/94'2")	4.6/28.7m (10.1/94'2")	3.0 (6.6)	3.0 (6.6)			
28 (91'10")	5.0 (11)	5.0 (11)	4.6 (10.1)	4.6 (10.1)	3.0 (6.6)	3.0 (6.6)			
30 (98'5")	5.0 (11)	5.0 (11)	4.6 (10.1)	4.6 (10.1)	3.0 (6.6)	3.0 (6.6)	2.6/32.7m (5.7/107'3")	2.6/32.7m (5.7/107'3")	
32 (111'7")	5.0 (11)	5.0 (11)	4.6 (10.1)	4.6 (10.1)	3.0 (6.6)	3.0 (6.6)	2.6 (5.7)	2.6 (5.7)	
34 (118'1")	5.0 (11)	5.0 (11)	4.6 (10.1)	4.6 (10.1)	3.0 (6.6)	3.0 (6.6)	2.6 (5.7)	2.6 (5.7)	
36 (124'8")	5.0 (11)	5.0 (11)	4.6 (10.1)	4.6 (10.1)	3.0 (6.6)	3.0 (6.6)	2.6 (5.7)	2.6 (5.7)	
38 (131'3")	5.0 (11)	5.0 (11)	4.6 (10.1)	4.6 (10.1)	3.0 (6.6)	3.0 (6.6)	2.6 (5.7)	2.6 (5.7)	
40 (137'10")	5.0 (11)	5.0 (11)	4.6 (10.1)	4.6 (10.1)	2.9 (6.4)	3.0 (6.6)	2.5 (5.5)	2.6 (5.7)	
42 (144'4")	5.0 (11)	5.0 (11)	4.6 (10.1)	4.6 (10.1)	2.9 (6.4)	3.0 (6.6)	2.5 (5.5)	2.6 (5.7)	
44 (150'11")	5.0 (11)	5.0 (11)	4.6 (10.1)	4.6 (10.1)	2.8 (6.2)	3.0 (6.6)	2.4 (5.3)	2.6 (5.7)	
46 (157'6")	5.0 (11)	5.0 (11)	4.6 (10.1)	4.6 (10.1)	2.8 (6.2)	3.0 (6.6)	2.4 (5.3)	2.6 (5.7)	
50 (164'0")	5.0/50.9m (11/166'12")	5.0/50.9m (11/166'12")	4.6/50.9m (10.1/166'12")	4.6/50.9m (10.1/166'12")	2.7/50.9m (6.1/166'12")	3.0/50.9m (6.6/166'12")	2.3/50.9m (5.1/166'12")	2.6/50.9m (5.7/166'12")	
Counterweight kg(lb)×1000	53 (116.8)	53+12 (116.8+26.5)	53 (116.8)	53+12 (116.8+26.5)	53 (116.8)	53+12 (116.8+26.5)	53 (116.8)	53+12 (116.8+26.5)	
Boom length m(ft)	60 (196'10")								
	13 (42'8")				19 (62'4")				
Jib length m(ft)	15°		30°		15°		30°		
Jib angle	15°		30°		15°		30°		
Radius m(ft)	15°		30°		15°		30°		
18 (59'1")	13.0/18.6m (28.7/61'0")	13.0/18.6m (28.7/61'0")							
20 (65'7")	13.0 (28.7)	13.0 (28.7)	9.0/21.4m (19.8/70'3")	9.0/21.4m (19.8/70'3")	8.0/21.2m (17.6/69'7")	8.0/21.2m (17.6/69'7")			
22 (72'2")	13.0 (28.7)	13.0 (28.7)	9.0 (19.8)	9.0 (19.8)	8.0 (17.6)	8.0 (17.6)			
24 (78'9")	13.0 (28.7)	13.0 (28.7)	9.0 (19.8)	9.0 (19.8)	8.0 (17.6)	8.0 (17.6)	6.0/25.4m (13.2/83'4")	6.0/25.4m (13.2/83'4")	
26 (85'4")	13.0 (28.7)	13.0 (28.7)	9.0 (19.8)	9.0 (19.8)	8.0 (17.6)	8.0 (17.6)	6.0 (13.2)	6.0 (13.2)	
28 (91'10")	13.0 (28.7)	13.0 (28.7)	9.0 (19.8)	9.0 (19.8)	8.0 (17.6)	8.0 (17.6)	6.0 (13.2)	6.0 (13.2)	
30 (98'5")	13.0 (28.7)	13.0 (28.7)	9.0 (19.8)	9.0 (19.8)	8.0 (17.6)	8.0 (17.6)	6.0 (13.2)	6.0 (13.2)	
32 (111'7")	11.8 (26)	13.0 (28.7)	9.0 (19.8)	9.0 (19.8)	8.0 (17.6)	8.0 (17.6)	6.0 (13.2)	6.0 (13.2)	
34 (118'1")	10.7 (23.6)	12.3 (27.1)	9.0 (19.8)	9.0 (19.8)	8.0 (17.6)	8.0 (17.6)	6.0 (13.2)	6.0 (13.2)	
36 (124'8")	9.7 (21.4)	11.2 (24.7)	9.0/36.7m (19.8/120'5")	9.0 (19.8)	8.0 (17.6)	8.0 (17.6)	6.0 (13.2)	6.0 (13.2)	
38 (131'3")	8.9 (19.6)	10.2 (22.5)	8.9 (19.6)	9.0 (19.8)	8.0 (17.6)	8.0 (17.6)	6.0 (13.2)	6.0 (13.2)	
40 (137'10")	8.2 (18.1)	9.4 (20.7)	8.2 (18.1)	9.0 (19.8)	8.0/40.7m (17.6/133'6")	8.0 (17.6)	6.0 (13.2)	6.0 (13.2)	
42 (144'4")	7.5 (16.5)	8.6 (19)	7.5 (16.5)	8.6 (19)	7.5 (16.5)	8.0 (17.6)	6.0 (13.2)	6.0 (13.2)	
44 (150'11")	6.9 (15.2)	7.9 (17.4)	6.9 (15.2)	7.9 (17.4)	6.9 (15.2)	7.9 (17.4)	6.0 (13.2)	6.0 (13.2)	
46 (157'6")	6.3 (13.9)	7.2 (15.9)	6.3 (13.9)	7.2 (15.9)	6.3 (13.9)	7.2 (15.9)	6.0/47.2m (13.2/154'10")	6.0 (13.2)	
48 (164'0")	5.9 (13)	6.8 (15)	5.9 (13)	6.8 (15)	5.9 (13)	6.8 (15)	5.9 (13)	6.0 (13.2)	
50 (170'7")	5.4 (11.9)	6.2 (13.7)	5.4 (11.9)	6.2 (13.7)	5.4 (11.9)	6.2 (13.7)	5.4 (11.9)	6.0 (13.2)	
52 (177'2")	5.0 (11)	5.8 (12.8)	5.0 (11)	5.8 (12.8)	5.0 (11)	5.8 (12.8)	5.0 (11)	5.8 (12.8)	
54 (177'2")	4.7/53.5m (10.4/175'6")	5.4/53.5m (11.9/175'6")	4.7/53.5m (10.4/175'6")	5.4/53.5m (11.9/175'6")	4.7/53.5m (10.4/175'6")	5.4/53.5m (11.9/175'6")	4.7/53.5m (10.4/175'6")	5.4/53.5m (11.9/175'6")	
Counterweight kg(lb)×1000	53 (116.8)	53+12 (116.8+26.5)	53 (116.8)	53+12 (116.8+26.5)	53 (116.8)	53+12 (116.8+26.5)	53 (116.8)	53+12 (116.8+26.5)	



Fixed jib load charts 9/12

kg(lb)×1000

Boom length m(ft)	60 (196'10")							
	25 (82'0")				31 (101'8")			
	15°		30°		15°		30°	
Jib length m(ft)	5.0/23.9m (11/78'5")		5.0/23.9m (11/78'5")		3.0/26.5m (6.6/86'11")		3.0/26.5m (6.6/86'11")	
Jib angle	15°		30°		15°		30°	
Radius m(ft)	5.0 (11)		5.0 (11)		3.0 (6.6)		3.0 (6.6)	
22 (72'2")	5.0/23.9m (11/78'5")	5.0/23.9m (11/78'5")						
24 (78'9")	5.0 (11)	5.0 (11)						
26 (85'4")	5.0 (11)	5.0 (11)			3.0/26.5m (6.6/86'11")	3.0/26.5m (6.6/86'11")		
28 (91'10")	5.0 (11)	5.0 (11)	4.6/29.3m (10.1/96'2")	4.6/29.3m (10.1/96'2")	3.0 (6.6)	3.0 (6.6)		
30 (98'5")	5.0 (11)	5.0 (11)	4.6 (10.1)	4.6 (10.1)	3.0 (6.6)	3.0 (6.6)		
32 (104'12")	5.0 (11)	5.0 (11)	4.6 (10.1)	4.6 (10.1)	3.0 (6.6)	3.0 (6.6)	2.6/33.2m (5.7/108'11")	2.6/33.2m (5.7/108'11")
34 (111'7")	5.0 (11)	5.0 (11)	4.6 (10.1)	4.6 (10.1)	3.0 (6.6)	3.0 (6.6)	2.6 (5.7)	2.6 (5.7)
36 (118'1")	5.0 (11)	5.0 (11)	4.6 (10.1)	4.6 (10.1)	3.0 (6.6)	3.0 (6.6)	2.6 (5.7)	2.6 (5.7)
38 (124'8")	5.0 (11)	5.0 (11)	4.6 (10.1)	4.6 (10.1)	3.0 (6.6)	3.0 (6.6)	2.6 (5.7)	2.6 (5.7)
40 (131'3")	5.0 (11)	5.0 (11)	4.6 (10.1)	4.6 (10.1)	3.0 (6.6)	3.0 (6.6)	2.6 (5.7)	2.6 (5.7)
42 (137'10")	5.0 (11)	5.0 (11)	4.6 (10.1)	4.6 (10.1)	3.0 (6.6)	3.0 (6.6)	2.6 (5.7)	2.6 (5.7)
44 (144'4")	5.0 (11)	5.0 (11)	4.6 (10.1)	4.6 (10.1)	3.0 (6.6)	3.0 (6.6)	2.5 (5.5)	2.6 (5.7)
46 (150'11")	5.0 (11)	5.0 (11)	4.6 (10.1)	4.6 (10.1)	2.9 (6.4)	3.0 (6.6)	2.5 (5.5)	2.6 (5.7)
48 (157'6")	5.0 (11)	5.0 (11)	4.6 (10.1)	4.6 (10.1)	2.9 (6.4)	3.0 (6.6)	2.4 (5.3)	2.6 (5.7)
50 (164'0")	5.0 (11)	5.0 (11)	4.6 (10.1)	4.6 (10.1)	2.8 (6.2)	3.0 (6.6)	2.4 (5.3)	2.6 (5.7)
52 (170'7")	5.0 (11)	5.0 (11)	4.6 (10.1)	4.6 (10.1)	2.8 (6.2)	3.0 (6.6)	2.3 (5.1)	2.6 (5.7)
54 (177'2")	4.7/53.5m (10.4/175'6")	5.0/53.5m (11/175'6")	4.6/53.5m (10.1/175'6")	4.6/53.5m (10.1/175'6")	2.7/53.5m (6/175'6")	3.0/53.5m (6.6/175'6")	2.25/53.5m (5/175'6")	2.6/53.5m (5.7/175'6")
Counterweight kg(lb)×1000	53 (116.8)	53+12 (116.8+26.5)	53 (116.8)	53+12 (116.8+26.5)	53 (116.8)	53+12 (116.8+26.5)	53 (116.8)	53+12 (116.8+26.5)
Boom length m(ft)	63 (206'8")							
	13 (42'8")				19 (62'4")			
	15°		30°		15°		30°	
Jib length m(ft)	13.0/19.2m (28.7/62'12")		13.0/19.2m (28.7/62'12")		8.0/21.8m (17.6/71'6")		8.0/21.8m (17.6/71'6")	
Jib angle	15°		30°		15°		30°	
Radius m(ft)	13.0 (28.7)		13.0 (28.7)		8.0 (17.6)		8.0 (17.6)	
18 (59'1")	13.0/19.2m (28.7/62'12")	13.0/19.2m (28.7/62'12")						
20 (65'7")	13.0 (28.7)	13.0 (28.7)			8.0/21.8m (17.6/71'6")	8.0/21.8m (17.6/71'6")		
24 (78'9")	13.0 (28.7)	13.0 (28.7)	9.0 (19.8)	9.0 (19.8)	8.0 (17.6)	8.0 (17.6)	6.0/25.9m (13.2/84'12")	6.0/25.9m (13.2/84'12")
26 (85'4")	13.0 (28.7)	13.0 (28.7)	9.0 (19.8)	9.0 (19.8)	8.0 (17.6)	8.0 (17.6)	6.0 (13.2)	6.0 (13.2)
28 (91'10")	13.0/29.8m (28.7/97'9")	13.0 (28.7)	9.0 (19.8)	9.0 (19.8)	8.0 (17.6)	8.0 (17.6)	6.0 (13.2)	6.0 (13.2)
32 (118'1")	11.6 (25.6)	13.0 (28.7)	9.0 (19.8)	9.0 (19.8)	8.0 (17.6)	8.0 (17.6)	6.0 (13.2)	6.0 (13.2)
34 (111'7")	10.5 (23.1)	12.1 (26.7)	9.0 (19.8)	9.0 (19.8)	8.0 (17.6)	8.0 (17.6)	6.0 (13.2)	6.0 (13.2)
36 (118'1")	9.5 (20.9)	10.9 (24)	9.0/37.3m (19.8/122'4")	9.0 (19.8)	8.0 (17.6)	8.0 (17.6)	6.0 (13.2)	6.0 (13.2)
38 (124'8")	8.7 (19.2)	10.0 (22)	8.7 (19.2)	9.0 (19.8)	8.0 (17.6)	8.0 (17.6)	6.0 (13.2)	6.0 (13.2)
40 (131'3")	8.0 (17.6)	9.2 (20.3)	8.0 (17.6)	9.0 (19.8)	8.0 (17.6)	8.0 (17.6)	6.0 (13.2)	6.0 (13.2)
42 (137'10")	7.3 (16.1)	8.4 (18.5)	7.3 (16.1)	8.4 (18.5)	7.3 (16.1)	8.0 (17.6)	6.0 (13.2)	6.0 (13.2)
44 (144'4")	6.7 (14.8)	7.7 (17)	6.7 (14.8)	7.7 (17)	6.7 (14.8)	7.7 (17)	6.0 (13.2)	6.0 (13.2)
46 (150'11")	6.1 (13.4)	7.0 (15.4)	6.1 (13.4)	7.0 (15.4)	6.1 (13.4)	7.0 (15.4)	6.0/46.6m (13.2/152'11")	6.0 (13.2)
48 (157'6")	5.7 (12.6)	6.6 (14.6)	5.7 (12.6)	6.6 (14.6)	5.7 (12.6)	6.6 (14.6)	6.0 (12.6)	6.0 (13.2)
50 (164'0")	5.2 (11.5)	6.0 (13.2)	5.2 (11.5)	6.0 (13.2)	5.2 (11.5)	6.0 (13.2)	5.2 (11.5)	6.0 (13.2)
52 (170'7")	4.7 (10.4)	5.4 (11.9)	4.7 (10.4)	5.4 (11.9)	4.7 (10.4)	5.4 (11.9)	4.7 (10.4)	5.4 (11.9)
54 (177'2")	4.3 (9.5)	4.9 (10.8)	4.3 (9.5)	4.9 (10.8)	4.3 (9.5)	4.9 (10.8)	4.3 (9.5)	4.9 (10.8)
56 (183'9")	3.9/56.1m (8.6/184'1")	4.5/56.1m (9.9/184'1")	3.9/56.1m (8.6/184'1")	4.5/56.1m (9.9/184'1")	3.9/56.1m (8.6/184'1")	4.5/56.1m (9.9/184'1")	3.9/56.1m (8.6/184'1")	4.5/56.1m (9.9/184'1")
Counterweight kg(lb)×1000	53 (116.8)	53+12 (116.8+26.5)	53 (116.8)	53+12 (116.8+26.5)	53 (116.8)	53+12 (116.8+26.5)	53 (116.8)	53+12 (116.8+26.5)



Fixed jib load charts 10/12										kg(lb)×1000
Boom length m(ft)	63 (206'8")									
	25 (82'0")				31 (101'8")					
Jib length m(ft)	15°				30°		15°		30°	
Jib angle	15°				30°		15°		30°	
Radius m(ft)	15°				30°		15°		30°	
24 (78'9")	5.0/24.4m (11/80'1")	5.0/24.4m (11/80'1")								
26 (85'4")	5.0 (11)	5.0 (11)			3.0/27.1m (6.6/88'11")	3.0/27.1m (6.6/88'11")				
28 (91'10")	5.0 (11)	5.0 (11)	4.6/29.9m (10.1/98'1")	4.6/29.9m (10.1/98'1")	3.0 (6.6)	3.0 (6.6)				
30 (98'5")	5.0 (11)	5.0 (11)	4.6 (10.1)	4.6 (10.1)	3.0 (6.6)	3.0 (6.6)				
32 Jib (111'3")	5.0 (11)	5.0 (11)	4.6 (10.1)	4.6 (10.1)	3.0 (6.6)	3.0 (6.6)	2.6/33.8m (5.7/110'11")	2.6/33.8m (5.7/110'11")		
36 (118'1")	5.0 (11)	5.0 (11)	4.6 (10.1)	4.6 (10.1)	3.0 (6.6)	3.0 (6.6)	2.6 (5.7)	2.6 (5.7)		
38 (124'8")	5.0 (11)	5.0 (11)	4.6 (10.1)	4.6 (10.1)	3.0 (6.6)	3.0 (6.6)	2.6 (5.7)	2.6 (5.7)		
40 (131'3")	5.0 (11)	5.0 (11)	4.6 (10.1)	4.6 (10.1)	3.0 (6.6)	3.0 (6.6)	2.6 (5.7)	2.6 (5.7)		
44 (144'4")	5.0 (11)	5.0 (11)	4.6 (10.1)	4.6 (10.1)	3.0 (6.6)	3.0 (6.6)	2.5 (5.5)	2.6 (5.7)		
46 (150'11")	5.0 (11)	5.0 (11)	4.6 (10.1)	4.6 (10.1)	3.0 (6.6)	3.0 (6.6)	2.5 (5.5)	2.6 (5.7)		
48 (157'6")	5.0 (11)	5.0 (11)	4.6 (10.1)	4.6 (10.1)	2.9 (6.4)	3.0 (6.6)	2.4 (5.3)	2.6 (5.7)		
50 (164'0")	5.0/50.5m (11/165'8")	5.0 (11)	4.6 (10.1)	4.6 (10.1)	2.9 (6.4)	3.0 (6.6)	2.4 (5.3)	2.6 (5.7)		
52 (170'7")	4.7 (10.4)	5.0 (11)	4.6/52.4m (10.1/171'11")	4.6 (10.1)	2.8 (6.2)	3.0 (6.6)	2.3 (5.1)	2.6 (5.7)		
54 (177'2")	4.3 (9.5)	4.9 (10.8)	4.3 (9.5)	4.6 (10.1)	2.8 (6.2)	3.0 (6.6)	2.3 (5.1)	2.6 (5.7)		
56 (183'9")	3.9/56.1m (8.6/184'1")	4.5/56.1m (9.9/184'1")	3.9/56.1m (8.6/184'1")	4.5/56.1m (9.9/184'1")	2.7/56.1m (6/184'1")	3.0/56.1m (6.6/184'1")	2.2/56.1m (4.9/184'1")	2.5/56.1m (5.5/184'1")		
Counterweight kg(lb)×1000	53 (116.8)	53+12 (116.8+26.5)	53 (116.8)	53+12 (116.8+26.5)	53 (116.8)	53+12 (116.8+26.5)	53 (116.8)	53+12 (116.8+26.5)		
Boom length m(ft)	66 (216'6")									
	13 (42'8")				19 (62'4")					
Jib length m(ft)	15°				30°		15°		30°	
Jib angle	15°				30°		15°		30°	
Radius m(ft)	15°				30°		15°		30°	
18 (59'1")	13.0/19.2m (28.7/62'12")	13.0/19.2m (28.7/62'12")								
20 (65'7")	13.0 (28.7)	13.0 (28.7)								
22 (72'2")	13.0 (28.7)	13.0 (28.7)	9.0/22.6m (19.8/74'2")	9.0/22.6m (19.8/74'2")	8.0/22.4m (17.6/73'6")	8.0/22.4m (17.6/73'6")				
26 (85'4")	13.0 (28.7)	13.0 (28.7)	9.0 (19.8)	9.0 (19.8)	8.0 (17.6)	8.0 (17.6)	6.0/26.5m (13.2/86'11")	6.0/26.5m (13.2/86'11")		
28 (91'10")	13.0/29.5m (28.7/96'9")	13.0 (28.7)	9.0 (19.8)	9.0 (19.8)	8.0 (17.6)	8.0 (17.6)	6.0 (13.2)	6.0 (13.2)		
30 (98'5")	12.7 (28)	13.0 (28.7)	9.0 (19.8)	9.0 (19.8)	8.0 (17.6)	8.0 (17.6)	6.0 (13.2)	6.0 (13.2)		
32 (104'12")	11.4 (25.1)	13.1 (28.9)	9.0 (19.8)	9.0 (19.8)	8.0 (17.6)	8.0 (17.6)	6.0 (13.2)	6.0 (13.2)		
34 (111'7")	10.4 (22.9)	12.0 (26.5)	9.0 (19.8)	9.0 (19.8)	8.0 (17.6)	8.0 (17.6)	6.0 (13.2)	6.0 (13.2)		
36 (118'1")	9.4 (20.7)	10.8 (23.8)	9.0/36.8m (19.8/120'9")	9.0 (19.8)	8.0 (17.6)	8.0 (17.6)	6.0 (13.2)	6.0 (13.2)		
38 (124'8")	8.6 (19)	9.9 (21.8)	8.6 (19)	9.0 (19.8)	8.0/39.4m (17.6/129'3")	8.0 (17.6)	6.0 (13.2)	6.0 (13.2)		
40 (131'3")	7.8 (17.2)	9.0 (19.8)	7.8 (17.2)	9.0 (19.8)	7.8 (17.2)	8.0 (17.6)	6.0 (13.2)	6.0 (13.2)		
44 (144'4")	6.5 (14.3)	7.5 (16.5)	6.5 (14.3)	7.5 (16.5)	6.5 (14.3)	7.5 (16.5)	6.0 (13.2)	6.0 (13.2)		
46 (150'11")	6.0 (13.2)	6.9 (15.2)	6.0 (13.2)	6.9 (15.2)	6.0 (13.2)	6.9 (15.2)	6.0 (13.2)	6.0 (13.2)		
48 (157'6")	5.5 (12.1)	6.3 (13.9)	5.5 (12.1)	6.3 (13.9)	5.5 (12.1)	6.3 (13.9)	5.5 (12.1)	6.0 (13.2)		
50 (164'0")	5.0 (11)	5.8 (12.8)	5.0 (11)	5.8 (12.8)	5.0 (11)	5.8 (12.8)	5.0 (11)	5.8 (12.8)		
52 (170'7")	4.5 (9.9)	5.2 (11.5)	4.5 (9.9)	5.2 (11.5)	4.5 (9.9)	5.2 (11.5)	4.5 (9.9)	5.2 (11.5)		
54 (177'2")	4.1 (9)	4.7 (10.4)	4.1 (9)	4.7 (10.4)	4.1 (9)	4.7 (10.4)	4.1 (9)	4.7 (10.4)		
56 (183'9")	3.7 (8.2)	4.3 (9.5)	3.7 (8.2)	4.3 (9.5)	3.7 (8.2)	4.3 (9.5)	3.7 (8.2)	4.3 (9.5)		
58 (190'3")	3.3 (7.3)	3.8 (8.4)	3.3 (7.3)	3.8 (8.4)	3.3 (7.3)	3.8 (8.4)	3.3 (7.3)	3.8 (8.4)		
60 (196'10")	3.2/58.7m (7.1/192'7")	3.7/58.7m (8.2/192'7")	3.2/58.7m (7.1/192'7")	3.7/58.7m (8.2/192'7")	3.2/58.7m (7.1/192'7")	3.7/58.7m (8.2/192'7")	3.2/58.7m (7.1/192'7")	3.7/58.7m (8.2/192'7")		
Counterweight kg(lb)×1000	53 (116.8)	53+12 (116.8+26.5)	53 (116.8)	53+12 (116.8+26.5)	53 (116.8)	53+12 (116.8+26.5)	53 (116.8)	53+12 (116.8+26.5)		



Fixed jib load charts 11/12									kg(lb)×1000
Boom length m(ft)	66 (216'6")								
	25 (82'0")				31 (101'8")				
Jib length m(ft)	15°		30°		15°		30°		
Jib angle	15°		30°		15°		30°		
Radius m(ft)	15°		30°		15°		30°		
24 (78'9")	5.0/25.0m (11/82'0")	5.0/25.0m (11/82'0")							
26 (85'4")	5.0 (11)	5.0 (11)			3.0/27.6m (6.6/90'7")	3.0/27.6m (6.6/90'7")			
28 (91'10")	5.0 (11)	5.0 (11)			3.0 (6.6)	3.0 (6.6)			
30 (98'5")	5.0 (11)	5.0 (11)	4.6/30.4m (10.1/99'9")	4.6/30.4m (10.1/99'9")	3.0 (6.6)	3.0 (6.6)			
32 (105')	5.0 (11)	5.0 (11)	4.6 (10.1)	4.6 (10.1)	3.0 (6.6)	3.0 (6.6)			
34 (111'7")	5.0 (11)	5.0 (11)	4.6 (10.1)	4.6 (10.1)	3.0 (6.6)	3.0 (6.6)	2.6/34.4m (5.7/112'10")	2.6/34.4m (5.7/112'10")	
38 (124'8")	5.0 (11)	5.0 (11)	4.6 (10.1)	4.6 (10.1)	3.0 (6.6)	3.0 (6.6)	2.6 (5.7)	2.6 (5.7)	
40 (131'3")	5.0 (11)	5.0 (11)	4.6 (10.1)	4.6 (10.1)	3.0 (6.6)	3.0 (6.6)	2.6 (5.7)	2.6 (5.7)	
42 (137'10")	5.0 (11)	5.0 (11)	4.6 (10.1)	4.6 (10.1)	3.0 (6.6)	3.0 (6.6)	2.6 (5.7)	2.6 (5.7)	
44 (144'4")	5.0 (11)	5.0 (11)	4.6 (10.1)	4.6 (10.1)	3.0 (6.6)	3.0 (6.6)	2.5 (5.5)	2.6 (5.7)	
48 (157'6")	5.0 (11)	5.0 (11)	4.6 (10.1)	4.6 (10.1)	2.9 (6.4)	3.0 (6.6)	2.4 (5.3)	2.6 (5.7)	
50 (164'0")	5.0 (11)	5.0 (11)	4.6/51.6m (10.1/169'3")	4.6 (10.1)	2.9 (6.4)	3.0 (6.6)	2.4 (5.3)	2.6 (5.7)	
52 (170'7")	4.5 (9.9)	5.0 (11)	4.5 (9.9)	4.6 (10.1)	2.8 (6.2)	3.0 (6.6)	2.3 (5.1)	2.6 (5.7)	
54 (177'2")	4.1 (9)	4.7 (10.4)	4.1 (9)	4.6 (10.1)	2.8 (6.2)	3.0 (6.6)	2.3 (5.1)	2.6 (5.7)	
56 (183'9")	3.7 (8.2)	4.3 (9.5)	3.7 (8.2)	4.3 (9.5)	2.7 (6)	3.0 (6.6)	2.2 (4.9)	2.5 (5.5)	
58 (190'3")	3.3 (7.3)	3.8 (8.4)	3.3 (7.3)	3.8 (8.4)	2.7 (6)	3.0 (6.6)	2.2 (4.9)	2.5 (5.5)	
60 (196'10")	3.2/58.7m (7.1/192'7")	3.7/58.7m (8.2/192'7")	3.2/58.7m (7.1/192'7")	3.7/58.7m (8.2/192'7")	2.6/58.7m (5.7/192'7")	3.0/58.7m (6.6/192'7")	2.1/58.7m (4.6/192'7")	2.4/58.7m (5.3/192'7")	
Counterweight kg(lb)×1000	53 (116.8)	53+12 (116.8+26.5)	53 (116.8)	53+12 (116.8+26.5)	53 (116.8)	53+12 (116.8+26.5)	53 (116.8)	53+12 (116.8+26.5)	
Boom length m(ft)	69 (226'5")								
	13 (42'8")				19 (62'4")				
Jib length m(ft)	15°		30°		15°		30°		
Jib angle	15°		30°		15°		30°		
Radius m(ft)	15°		30°		15°		30°		
20 (65'7")	13.0/20.3m (28.7/66'7")	13.0/20.3m (28.7/66'7")							
22 (72'2")	13.0 (28.7)	13.0 (28.7)	9.0/23.1m (19.8/75'9")	9.0/23.1m (19.8/75'9")	8.0/22.9m (17.6/75'2")	8.0/22.9m (17.6/75'2")			
24 (78'9")	13.0 (28.7)	13.0 (28.7)	9.0 (19.8)	9.0 (19.8)	8.0 (17.6)	8.0 (17.6)			
26 (85'4")	13.0 (28.7)	13.0 (28.7)	9.0 (19.8)	9.0 (19.8)	8.0 (17.6)	8.0 (17.6)	6.0/27.1m (13.2/88'11")	6.0/27.1m (13.2/88'11")	
28 (91'10")	13.0/29.3m (28.7/96'2")	13.0 (28.7)	9.0 (19.8)	9.0 (19.8)	8.0 (17.6)	8.0 (17.6)	6.0 (13.2)	6.0 (13.2)	
30 (98'5")	12.6 (27.8)	13.0 (28.7)	9.0 (19.8)	9.0 (19.8)	8.0 (17.6)	8.0 (17.6)	6.0 (13.2)	6.0 (13.2)	
32 (98'5")	11.4 (25.1)	13.0 (28.7)	9.0 (19.8)	9.0 (19.8)	8.0 (17.6)	8.0 (17.6)	6.0 (13.2)	6.0 (13.2)	
34 (111'7")	10.3 (22.7)	11.8 (26)	9.0 (19.8)	9.0 (19.8)	8.0 (17.6)	8.0 (17.6)	6.0 (13.2)	6.0 (13.2)	
36 (118'1")	9.3 (20.5)	10.7 (23.6)	9.0/36.5m (19.8/119'9")	9.0 (19.8)	8.0 (17.6)	8.0 (17.6)	6.0 (13.2)	6.0 (13.2)	
38 (124'8")	8.5 (18.7)	9.8 (21.6)	8.5 (18.7)	9.0 (19.8)	8.0/39.4m (17.6/129'3")	8.0 (17.6)	6.0 (13.2)	6.0 (13.2)	
40 (131'3")	7.7 (17)	8.9 (19.6)	7.7 (17)	8.9 (19.6)	7.7 (17)	8.0 (17.6)	6.0 (13.2)	6.0 (13.2)	
44 (144'4")	6.5 (14.3)	7.5 (16.5)	6.5 (14.3)	7.5 (16.5)	6.5 (14.3)	7.5 (16.5)	6.0/45.6m (13.2/149'7")	6.0 (13.2)	
46 (150'11")	5.9 (13)	6.8 (15)	5.9 (13)	6.8 (15)	5.9 (13)	6.8 (15)	5.9 (13)	6.0 (13.2)	
50 (164'0")	4.9 (10.8)	5.6 (12.3)	4.9 (10.8)	5.6 (12.3)	4.9 (10.8)	5.6 (12.3)	4.9 (10.8)	5.6 (12.3)	
54 (177'2")	3.9 (8.6)	4.5 (9.9)	3.9 (8.6)	4.5 (9.9)	3.9 (8.6)	4.5 (9.9)	3.9 (8.6)	4.5 (9.9)	
56 (183'9")	3.5 (7.7)	4.0 (8.8)	3.5 (7.7)	4.0 (8.8)	3.5 (7.7)	4.0 (8.8)	3.5 (7.7)	4.0 (8.8)	
58 (190'3")	3.2 (7.1)	3.7 (8.2)	3.2 (7.1)	3.7 (8.2)	3.2 (7.1)	3.7 (8.2)	3.2 (7.1)	3.7 (8.2)	
60 (196'10")	2.8 (6.2)	3.2 (7.1)	2.8 (6.2)	3.2 (7.1)	2.8 (6.2)	3.2 (7.1)	2.8 (6.2)	3.2 (7.1)	
Counterweight kg(lb)×1000	53 (116.8)	53+12 (116.8+26.5)	53 (116.8)	53+12 (116.8+26.5)	53 (116.8)	53+12 (116.8+26.5)	53 (116.8)	53+12 (116.8+26.5)	



Fixed jib load charts 12/12										kg(lb)×1000
Boom length m(ft)	69 (226'5")									
	25 (82'0")				31 (101'8")					
Jib length m(ft)	15°				30°		15°		30°	
Jib angle	15°		30°		15°		30°			
Radius m(ft)	15°		30°		15°		30°			
24 (78'9")	5.0/25.6m (11/83'12")	5.0/25.6m (11/83'12")								
26 (85'4")	5.0 (11)	5.0 (11)								
28 (91'10")	5.0 (11)	5.0 (11)			3.0/28.2m (6.6/92'6")	3.0/28.2m (6.6/92'6")				
30 (98'5")	5.0 (11)	5.0 (11)	4.6/31.0m (10.1/101'8")	4.6/31.0m (10.1/101'8")	3.0 (6.6)	3.0 (6.6)				
32	5.0 (11)	5.0 (11)	4.6 (10.1)	4.6 (10.1)	3.0 (6.6)	3.0 (6.6)				
28	5.0 (11)	5.0 (11)	4.6 (10.1)	4.6 (10.1)	3.0 (6.6)	3.0 (6.6)				
34 (111'7")	5.0 (11)	5.0 (11)	4.6 (10.1)	4.6 (10.1)	3.0 (6.6)	3.0 (6.6)	2.6/35.0m (5.7/114'10")	2.6/35.0m (5.7/114'10")		
36 (118'1")	5.0 (11)	5.0 (11)	4.6 (10.1)	4.6 (10.1)	3.0 (6.6)	3.0 (6.6)	2.6 (5.7)	2.6 (5.7)		
40	5.0 (11)	5.0 (11)	4.6 (10.1)	4.6 (10.1)	3.0 (6.6)	3.0 (6.6)	2.6 (5.7)	2.6 (5.7)		
44	5.0 (11)	5.0 (11)	4.6 (10.1)	4.6 (10.1)	3.0 (6.6)	3.0 (6.6)	2.5 (5.5)	2.6 (5.7)		
46	5.0 (11)	5.0 (11)	4.6 (10.1)	4.6 (10.1)	3.0 (6.6)	3.0 (6.6)	2.5 (5.5)	2.6 (5.7)		
48	5.0/49.6m (11/162'9")	5.0 (11)	4.6 (10.1)	4.6 (10.1)	2.9 (6.4)	3.0 (6.6)	2.4 (5.3)	2.6 (5.7)		
50	4.9 (10.8)	5.0 (11)	4.6/51.2m (10.1/167'12")	4.6 (10.1)	2.9 (6.4)	3.0 (6.6)	2.4 (5.3)	2.6 (5.7)		
52	4.4 (9.7)	5.0 (11)	4.4 (9.7)	4.6 (10.1)	2.8 (6.2)	3.0 (6.6)	2.3 (5.1)	2.6 (5.7)		
54	3.9 (8.6)	4.5 (9.9)	3.9 (8.6)	4.5 (9.9)	2.8 (6.2)	3.0 (6.6)	2.3 (5.1)	2.6 (5.7)		
56	3.5 (7.7)	4.0 (8.8)	3.5 (7.7)	4.0 (8.8)	2.7 (6)	3.0 (6.6)	2.2 (4.9)	2.5 (5.5)		
58	3.2 (7.1)	3.7 (8.2)	3.2 (7.1)	3.7 (8.2)	2.7 (6)	3.0 (6.6)	2.2 (4.9)	2.5 (5.5)		
60	2.8 (6.2)	3.2 (7.1)	2.8 (6.2)	3.2 (7.1)	2.6 (5.7)	3.0 (6.6)	2.1 (4.6)	2.4 (5.3)		
Counterweight kg(lb)×1000	53 (116.8)	53+12 (116.8+26.5)	53 (116.8)	53+12 (116.8+26.5)	53 (116.8)	53+12 (116.8+26.5)	53 (116.8)	53+12 (116.8+26.5)		
Boom length m(ft)	75 (246'1")									
Jib length m(ft)	13 (42'8")									
Jib angle	15°				30°					
Radius m(ft)	15°		30°		15°		30°			
20 (65'7")	13.0/21.5m (28.7/70'6")	13.0/21.5m (28.7/70'6")								
22 (72'2")	13.0 (28.7)	13.0 (28.7)								
24 (78'9")	13.0 (28.7)	13.0 (28.7)	9.0/24.3m (19.8/79'9")	9.0/24.3m (19.8/79'9")						
26 (85'4")	13.0 (28.7)	13.0 (28.7)	9.0 (19.8)	9.0 (19.8)						
28 (91'10")	13.0/28.8m (28.7/94'6")	13.0 (28.7)	9.0 (19.8)	9.0 (19.8)						
30 (98'5")	12.2 (26.9)	13.0 (28.7)	9.0 (19.8)	9.0 (19.8)						
32	11.0 (24.3)	12.7 (28)	9.0 (19.8)	9.0 (19.8)						
34 (111'7")	9.9 (21.8)	11.4 (25.1)	9.0/35.8m (19.8/117'5")	9.0 (19.8)						
36 (118'1")	8.9 (19.6)	10.2 (22.5)	8.9 (19.6)	9.0 (19.8)						
40	7.3 (16.1)	8.4 (18.5)	7.3 (16.1)	8.4 (18.5)						
44	6.0 (13.2)	6.9 (15.2)	6.0 (13.2)	6.9 (15.2)						
48	4.8 (10.6)	5.5 (12.1)	4.8 (10.6)	5.5 (12.1)						
50	4.3 (9.5)	4.9 (10.8)	4.3 (9.5)	4.9 (10.8)						
52	3.8 (8.4)	4.4 (9.7)	3.8 (8.4)	4.4 (9.7)						
54	3.4 (7.5)	3.9 (8.6)	3.4 (7.5)	3.9 (8.6)						
56	3.0 (6.6)	3.5 (7.7)	3.0 (6.6)	3.5 (7.7)						
58	2.6 (5.7)	3.0 (6.6)	2.6 (5.7)	3.0 (6.6)						
60	2.2 (4.9)	2.5 (5.5)	2.2 (4.9)	2.5 (5.5)						
Counterweight kg(lb)×1000	53 (116.8)	53+12 (116.8+26.5)	53 (116.8)	53+12 (116.8+26.5)						