

# SPECIFICATIONS

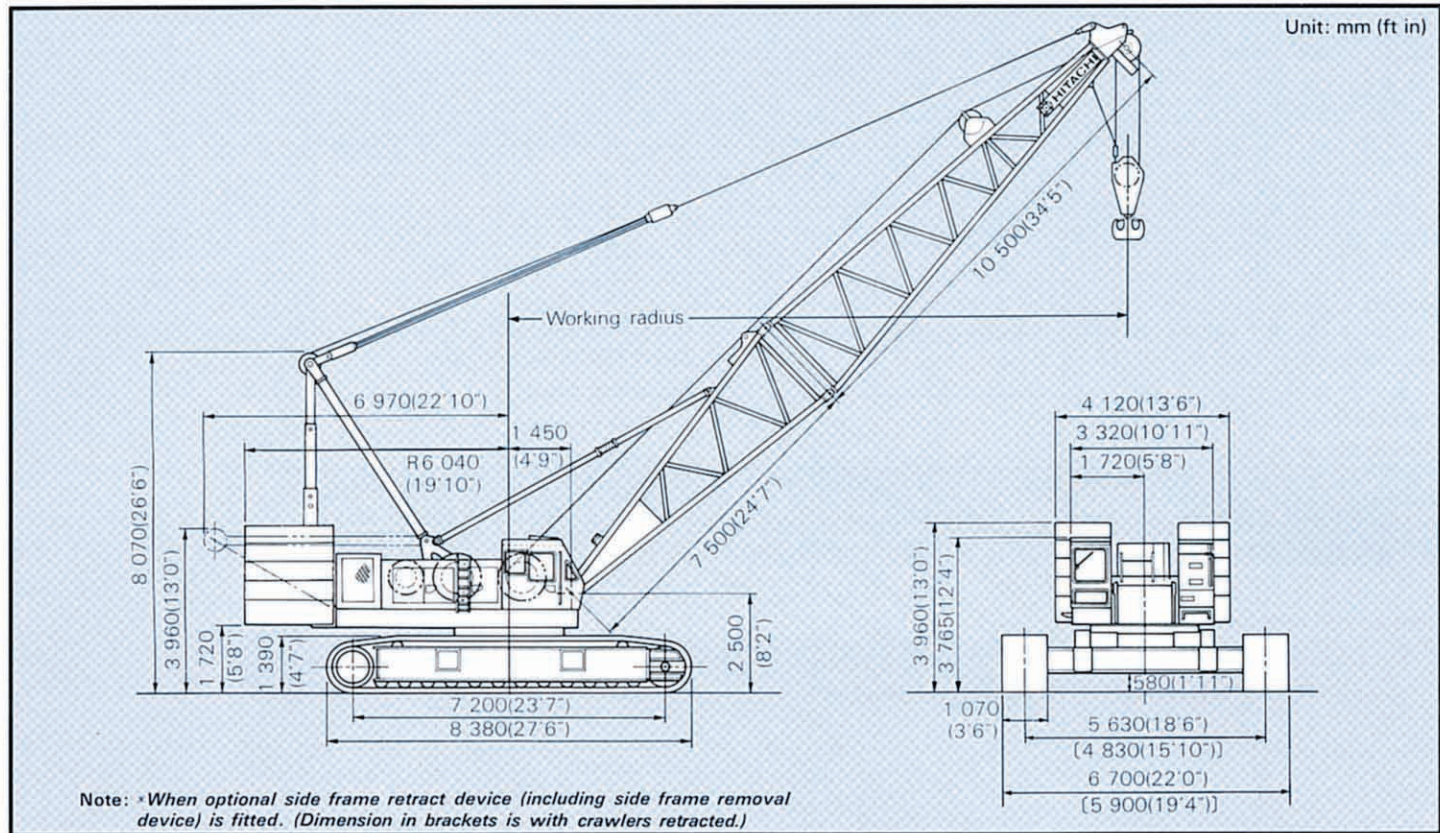


# KH850-3

## HYDRAULIC CRAWLER CRANE

Max. Lifting Capacity: 150 000 kg (330 700 lb) at 5.0m (16'5")

### Dimensions



### Specifications

<b>Maximum rated load</b>		150 000 kg(330 700 lb) at 5.0 m(16'5") working radius
<b>Boom</b>	Basic boom length	18.0 m (59'1")
	Max. boom length	84.0 m(275'7")
	Jib length	13.0 m(42'8") to 31.0 m (101'8")
	Max. boom with jib length	103.0 m(337'11") (72.0m(236'3")+31.0 m(101'8"))
<b>Swing speed</b>	High	0 to 2.0 min <sup>-1</sup> (0 to 2.0 r.p.m.)
	Low	0 to 1.2 min <sup>-1</sup> (0 to 1.2 r.p.m.)
<b>Travel speed</b> <sup>x</sup>	High	0 to 1.2 km/h (0 to 0.75 mph)
	Low	0 to 0.8 km/h (0 to 0.50 mph)
<b>Gradeability</b>		17*(30%)
<b>Ground pressure</b>		0.91 bar(0.91 kgf/cm <sup>2</sup> , 12.9 psi)
<b>Operating weight</b>	Equipped with basic boom, 150 000 kg (330 700 lb)capacity hook and 57 700 kg (127 200 lb)counterweight	150 000 kg(330 700 lb)
<b>Engine</b>	Model	ISUZU 6RB1T
	Rated horsepower	206 kW(280 PS) at 2 000 min <sup>-1</sup> (2 000 r.p.m.)

\* Speeds may vary with load

## HOOKS

Capacity	Weight	Number of hoist reeving and maximum rated loads													kg(lb)	Application	
		14	13	12	11	10	9	8	7	6	5	4	3	2			1
150 000 kg (330 700 lb)	2 300 kg (5 070 lb)	150 000 (330 700)	142 000 (313 100)	134 000 (295 400)	127 000 (280 000)	118 000 (260 100)	110 000 (242 500)	100 000 (220 500)	87 500 (192 900)	75 000 (165 300)							standard for main boom
100 000 kg (220 500 lb)	1 400 kg (3 090 lb)							100 000 (220 500)	87 500 (192 900)	75 000 (165 300)	62 500 (137 800)	50 000 (110 200)	37 500 (82 670)	25 000 (55 120)			optional for main boom
60 000 kg (132 300 lb)	1 200 kg (2 650 lb)										60 000 (132 300)	50 000 (110 200)	37 500 (82 670)	25 000 (55 120)			
25 000 kg (55 120 lb)	850 kg (1 870 lb)													25 000 (55 120)			
12 500 kg (27 560 lb)	500 kg (1 100 lb)															12 500 (27 560)	optional for jib or aux Jib

**Notes:**  
 This table lists the values based on the use of the Hitachi standard wire rope. \*  
 \* The Hitachi standard wire rope is Monorope EP 3xF (a+40), z-lay Class C in general.

## DRUMS

### Dimensions

	Rope dia.	Width	Drum p.c.d.	Rope capacity
Main hoist drum	28 mm(1.10")	666 mm(26.2')	590 mm(23.2")	290 m(951')
Aux. hoist drum	28 mm(1.10")	666 mm(26.2')	590 mm(23.2")	290 m(951')

### Line speed and line pull

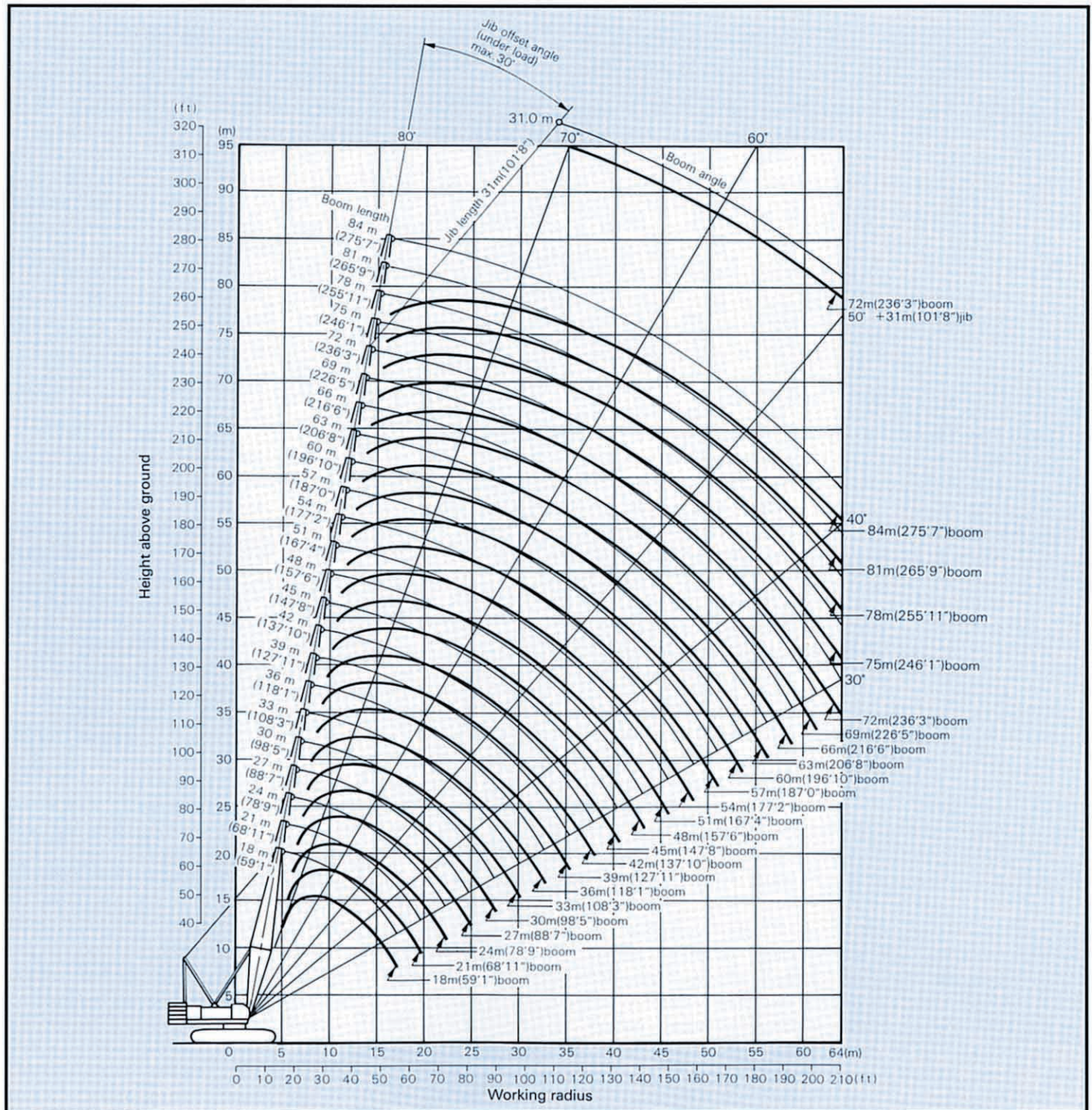
	Max. line speed m/min (ft/min)		Effective line pull @	Line speed	Max. starting line pull	Max. running line pull
	Hoisting	Lowering				
Main hoist drum	75(246)	75(246)	131 kN (13 400 kgf) (29 540 lbf)	37 m/min (121 ft/min)	186 kN (19 000 kgf) (41 890 lbf)	196 kN (20 000 kgf) (44 090 lbf)
Aux. hoist drum	75(246)	75(246)	131 kN (13 400 kgf) (29 540 lbf)	37 m/min (121 ft/min)	186 kN (19 000 kgf) (41 890 lbf)	196 kN (20 000 kgf) (44 090 lbf)

**Notes:**  
 1. Line speed and line pull are based on first layer of winding at rated engine rpm.  
 2. Hoisting line speed varies with load.  
 3. Line pull is based on a single line pull in high speed range.  
 4. Effective line pull is equivalent to available line pull of mechanical drive winch.  
 5. When hydraulic motor starts, since it is not rotating line pull is "Max. starting line pull". After motor rotating, the line pull becomes "Max. running line pull" shortly.

## BOOM HOIST DRUM

Rope diameter	Hoisting line speed	Lowering line speed
22 mm(0.87")	25 m/min(82 ft/min) × 2	25 m/min(82 ft/min) × 2

# Working Ranges



# Crane Ratings

## JIS Rating:

The rated loads shown don't exceed 78% of tipping loads with the machine on firm level ground.

## BS Rating:

The rated loads are determined according to BS (British Standard; 1981) on the condition that the machine is stationed on firm, level ground.

## PCSA Rating:

The rated loads listed are determined according to PCSA (Power Crane and Shovel Association in U.S.A) and do not exceed 75% of tipping load on condition that the machine is stationed on firm, level ground.

## Tubular Chord Crane Boom in 360° Working Area without Mast

Boom length	Working radius		Rated load					Boom length	Working radius		Rated load				
			JIS rating	BS rating		PCSA rating					JIS rating	BS rating		PCSA rating	
m(ft in)	m	ft in	kg	kg	lb	kg	lb	m(ft in)	m	ft in	kg	kg	lb	kg	lb
18.0 (59'1")	5.0	16' 5"	150 000	150 000	330 700	150 000	330 700	27.0 (88'7")	6.5	21' 4"	112 000	112 000	246 900	112 000	246 900
	5.5	18' 1"	147 000	147 000	324 100	147 000	324 100		7.0	23' 0"	112 000	112 000	246 900	112 000	246 900
	6.0	19' 8"	141 700	141 700	312 400	141 700	312 400		8.0	26' 3"	99 000	99 000	218 300	99 000	218 300
	6.5	21' 4"	133 000	133 000	293 200	133 000	293 200		9.0	29' 6"	85 100	85 100	187 600	83 100	183 200
	7.0	23' 0"	123 600	123 600	272 500	123 600	272 500		10.0	32' 10"	72 800	72 800	160 500	70 800	156 100
	8.0	26' 3"	102 500	102 500	226 000	100 600	221 800		12.0	39' 4"	56 100	56 100	123 700	54 500	120 200
	9.0	29' 6"	85 700	85 700	188 900	83 600	184 300		14.0	45' 11"	45 400	45 400	100 100	44 000	97 000
	10.0	32' 10"	73 400	73 400	161 800	71 500	157 600		16.0	52' 6"	38 000	38 000	83 780	36 700	80 910
	12.0	39' 4"	56 800	56 800	125 200	55 200	121 700		18.0	59' 1"	32 500	32 500	71 650	31 400	69 230
	14.0	45' 11"	46 200	46 200	101 900	44 800	98 770		20.0	65' 7"	28 300	28 300	62 400	27 300	60 200
16.0	52' 6"	36 900	36 900	81 350	36 900	81 350	22.0	72' 2"	25 000	25 000	55 120	24 100	53 130		
17.3	56' 9"	30 900	30 900	68 120	30 900	68 120	24.0	78' 9"	22 300	22 300	49 160	21 500	47 400		
							25.0	82' 0"	20 300	20 300	44 750	20 300	44 750		
21.0 (68'11")	5.5	18' 1"	130 000	130 000	286 600	130 000	286 600	30.0 (98'5")	7.0	23' 0"	101 000	101 000	222 700	101 000	222 700
	6.0	19' 8"	130 000	130 000	286 600	130 000	286 600		8.0	26' 3"	98 000	98 000	216 100	98 000	216 100
	6.5	21' 4"	130 000	130 000	286 600	130 000	286 600		9.0	29' 6"	84 900	84 900	187 200	82 900	182 800
	7.0	23' 0"	121 000	121 000	266 800	121 000	266 800		10.0	32' 10"	72 600	72 600	160 100	70 600	155 600
	8.0	26' 3"	102 100	102 100	225 100	100 300	221 100		12.0	39' 4"	55 900	55 900	123 200	54 200	119 500
	9.0	29' 6"	85 400	85 400	188 300	83 300	183 600		14.0	45' 11"	45 200	45 200	99 650	43 700	96 340
	10.0	32' 10"	73 100	73 100	161 200	71 100	156 700		16.0	52' 6"	37 700	37 700	83 110	36 500	80 470
	12.0	39' 4"	56 500	56 500	124 600	54 800	120 800		18.0	59' 1"	32 200	32 200	70 990	31 100	68 560
	14.0	45' 11"	45 800	45 800	101 000	44 400	97 900		20.0	65' 7"	28 000	28 000	61 730	27 000	59 520
	16.0	52' 6"	38 400	38 400	84 660	37 100	81 790		22.0	72' 2"	24 700	24 700	54 450	23 800	52 470
18.0	59' 1"	32 900	32 900	72 530	31 800	70 110	24.0	78' 9"	22 000	22 000	48 500	21 200	46 740		
19.9	65' 3"	26 500	26 500	58 420	26 500	58 420	26.0	85' 4"	19 800	19 800	43 650	19 100	42 110		
							27.6	90' 7"	17 800	17 800	39 240	17 700	39 020		
24.0 (78'9")	6.0	19' 8"	122 000	122 000	269 000	122 000	269 000	33.0 (108'3")	7.6	24' 11"	91 400	91 400	201 500	91 400	201 500
	6.5	21' 4"	122 000	122 000	269 000	122 000	269 000		8.0	26' 3"	91 200	91 200	201 100	91 200	201 100
	7.0	23' 0"	117 000	117 000	257 900	117 000	257 900		9.0	29' 6"	83 800	83 800	184 700	82 800	182 500
	8.0	26' 3"	101 000	101 000	222 700	100 100	220 700		10.0	32' 10"	72 500	72 500	159 800	70 600	155 600
	9.0	29' 6"	85 200	85 200	187 800	83 100	183 200		12.0	39' 4"	55 800	55 800	123 000	54 100	119 300
	10.0	32' 10"	72 800	72 800	160 500	70 900	156 300		14.0	45' 11"	45 100	45 100	99 430	43 600	96 120
	12.0	39' 4"	56 200	56 200	123 900	54 500	120 200		16.0	52' 6"	37 600	37 600	82 890	36 400	80 250
	14.0	45' 11"	45 500	45 500	100 300	44 100	97 220		18.0	59' 1"	32 100	32 100	70 770	31 000	68 340
	16.0	52' 6"	38 100	38 100	84 000	36 800	81 130		20.0	65' 7"	27 900	27 900	61 510	26 900	59 300
	18.0	59' 1"	32 600	32 600	71 870	31 500	69 450		22.0	72' 2"	24 500	24 500	54 010	23 700	52 250
20.0	65' 7"	28 400	28 400	62 610	27 400	60 410	24.0	78' 9"	21 900	21 900	48 280	21 100	46 520		
22.0	72' 2"	24 200	24 200	53 350	24 200	53 350	26.0	85' 4"	19 600	19 600	43 210	18 900	41 670		
22.4	73' 6"	23 200	23 200	51 150	23 200	51 150	28.0	91' 10"	17 800	17 800	39 240	17 200	37 920		
							30.0	98' 5"	16 000	16 000	35 270	15 700	34 610		
							30.2	99' 1"	15 800	15 800	34 830	15 500	34 170		

Boom length	Working radius		Rated load					Boom length	Working radius		Rated load				
			JIS rating	BS rating		PCSA rating					JIS rating	BS rating		PCSA rating	
			kg	kg	lb	kg	lb				kg	kg	lb	kg	lb
36.0 (118'1")	8.1	26' 7"	80 700	80 700	177 900	80 700	177 900	45.0 (147'8")	9.7	31'10"	69 000	64 400	142 000	69 000	152 100
	9.0	29' 6"	80 700	80 700	177 900	80 700	177 900		10.0	32'10"	69 000	63 900	140 900	69 000	152 100
	10.0	32'10"	72 000	72 000	158 700	70 400	155 200		12.0	39' 4"	55 200	55 200	121 700	53 600	118 200
	12.0	39' 4"	55 600	55 600	122 600	53 900	118 800		14.0	45'11"	44 400	44 400	97 890	43 000	94 800
	14.0	45'11"	44 800	44 800	98 770	43 400	95 680		16.0	52' 6"	36 900	36 900	81 350	35 700	78 710
	16.0	52' 6"	37 400	37 400	82 450	36 100	79 590		18.0	59' 1"	31 400	31 400	69 230	30 300	66 800
	18.0	59' 1"	31 800	31 800	70 110	30 800	67 900		20.0	65' 7"	27 200	27 200	59 970	26 200	57 760
	20.0	65' 7"	27 600	27 600	60 850	26 700	58 860		22.0	72' 2"	23 800	23 800	52 470	23 000	50 710
	22.0	72' 2"	24 300	24 300	53 570	23 400	51 590		24.0	78' 9"	21 100	21 100	46 520	20 300	44 750
	24.0	78' 9"	21 600	21 600	47 620	20 800	45 860		26.0	85' 4"	18 800	18 800	41 450	18 200	40 120
	26.0	85' 4"	19 400	19 400	42 770	18 700	41 230		28.0	91'10"	17 000	17 000	37 480	16 400	36 160
	28.0	91'10"	17 500	17 500	38 580	16 900	37 260		30.0	98' 5"	15 400	15 400	33 950	14 800	32 630
	30.0	98' 5"	15 900	15 900	35 050	15 300	33 730		32.0	105' 0"	14 000	14 000	30 860	13 500	29 760
	32.0	105' 0"	14 600	14 600	32 190	14 000	30 860		34.0	111' 7"	12 800	12 800	28 220	12 300	27 120
32.8	107' 7"	14 000	14 000	30 860	13 600	29 980	36.0	118' 1"	11 800	11 800	26 010	11 300	24 910		
39.0 (127'11")	8.6	28' 3"	80 700	80 300	177 000	80 700	177 900	38.0	124' 8"	10 900	10 900	24 030	10 500	23 150	
	9.0	29' 6"	80 700	79 200	174 600	80 700	177 900	40.0	131' 3"	10 000	10 000	22 050	9 700	21 380	
	10.0	32'10"	72 000	72 000	158 700	70 200	154 800	40.6	133' 2"	9 600	9 600	21 160	9 500	20 940	
	12.0	39' 4"	55 400	55 400	122 100	53 800	118 600	48.0 (157'6")	10.2	33' 6"	58 800	57 100	125 900	58 800	129 600
	14.0	45'11"	44 700	44 700	98 550	43 300	95 460		12.0	39' 4"	55 000	54 700	120 600	53 400	117 700
	16.0	52' 6"	37 200	37 200	82 010	36 000	79 370		14.0	45'11"	44 300	44 300	97 660	42 900	94 580
	18.0	59' 1"	31 700	31 700	69 890	30 600	67 460		16.0	52' 6"	36 800	36 800	81 130	35 600	78 480
	20.0	65' 7"	27 400	27 400	60 410	26 500	58 420		18.0	59' 1"	31 200	31 200	68 780	30 200	66 580
	22.0	72' 2"	24 100	24 100	53 130	23 300	51 370		20.0	65' 7"	27 000	27 000	59 520	26 000	57 320
	24.0	78' 9"	21 400	21 400	47 180	20 600	45 420		22.0	72' 2"	23 600	23 600	52 030	22 800	50 270
	26.0	85' 4"	19 200	19 200	42 330	18 500	40 790		24.0	78' 9"	20 900	20 900	46 080	20 200	44 530
	28.0	91'10"	17 300	17 300	38 140	16 700	36 820		26.0	85' 4"	18 700	18 700	41 230	18 000	39 680
	30.0	98' 5"	15 700	15 700	34 610	15 200	33 510		28.0	91'10"	16 800	16 800	37 040	16 200	35 710
	32.0	105' 0"	14 400	14 400	31 750	13 800	30 420		30.0	98' 5"	15 200	15 200	33 510	14 600	32 190
34.0	111' 7"	13 200	13 200	29 100	12 700	28 000	32.0		105' 0"	13 800	13 800	30 420	13 300	29 320	
35.4	116' 2"	12 100	12 100	26 680	12 000	26 460	34.0		111' 7"	12 600	12 600	27 780	12 100	26 680	
42.0 (137'10")	9.2	30' 2"	69 000	69 000	152 100	69 000	152 100		36.0	118' 1"	11 500	11 500	25 350	11 100	24 470
	10.0	32'10"	69 000	69 000	152 100	69 000	152 100	38.0	124' 8"	10 600	10 600	23 370	10 200	22 490	
	12.0	39' 4"	55 400	55 400	122 100	53 700	118 400	40.0	131' 3"	9 800	9 800	21 610	9 400	20 720	
	14.0	45'11"	44 600	44 600	98 330	43 200	95 240	42.0	137'10"	9 100	9 100	20 060	8 700	19 180	
	16.0	52' 6"	37 100	37 100	81 790	35 900	79 150	43.2	141' 9"	8 700	8 700	19 180	8 400	18 520	
	18.0	59' 1"	31 600	31 600	69 670	30 500	67 240	51.0 (167'4")	10.7	35' 1"	58 800	51 000	112 400	58 800	129 600
	20.0	65' 7"	27 300	27 300	60 190	26 400	58 200		12.0	39' 4"	54 900	49 500	109 100	53 200	117 300
	22.0	72' 2"	24 000	24 000	52 910	23 200	51 150		14.0	45'11"	44 100	44 100	97 220	42 700	94 140
	24.0	78' 9"	21 300	21 300	46 960	20 500	45 190		16.0	52' 6"	36 600	36 600	80 690	35 400	78 040
	26.0	85' 4"	19 100	19 100	42 110	18 400	40 570		18.0	59' 1"	31 000	31 000	68 340	30 000	66 140
	28.0	91'10"	17 200	17 200	37 920	16 600	36 600		20.0	65' 7"	26 800	26 800	59 080	25 800	56 880
	30.0	98' 5"	15 600	15 600	34 390	15 000	33 070		22.0	72' 2"	23 400	23 400	51 590	22 600	49 820
	32.0	105' 0"	14 200	14 200	31 310	13 700	30 200		24.0	78' 9"	20 700	20 700	45 640	19 900	43 870
	34.0	111' 7"	13 000	13 000	28 660	12 600	27 780		26.0	85' 4"	18 400	18 400	40 570	17 800	39 240
36.0	118' 1"	12 000	12 000	26 460	11 600	25 570	28.0		91'10"	16 600	16 600	36 600	15 900	35 050	
38.0	124' 8"	10 800	10 800	23 810	10 700	23 590	30.0		98' 5"	14 900	14 900	32 850	14 400	31 750	
							32.0		105' 0"	13 600	13 600	29 980	13 100	28 880	
							34.0		111' 7"	12 400	12 400	27 340	11 900	26 240	
							36.0		118' 1"	11 300	11 300	24 910	10 900	24 030	
							38.0	124' 8"	10 400	10 400	22 930	10 000	22 050		
							40.0	131' 3"	9 600	9 600	21 160	9 200	20 280		
							42.0	137'10"	8 800	8 800	19 400	8 500	18 740		
							44.0	144' 4"	8 200	8 200	18 080	7 900	17 420		
							45.8	150' 3"	7 600	7 600	16 760	7 400	16 310		

Continued on next page

Boom length	Working radius		Rated load				
			JIS rating	BS rating		PCSA rating	
m(ft in)	m	ft in	kg	kg	lb	kg	lb
54.0 (177'2")	11.2	36' 9"	47 500	45 200	99 650	47 500	104 700
	12.0	39' 4"	47 500	44 400	97 890	47 500	104 700
	14.0	45'11"	44 000	42 400	93 480	42 600	93 920
	16.0	52' 6"	36 500	36 500	80 470	35 300	77 820
	18.0	59' 1"	31 000	31 000	68 340	29 900	65 920
	20.0	65' 7"	26 700	26 700	58 860	25 800	56 880
	22.0	72' 2"	23 300	23 300	51 370	22 500	49 600
	24.0	78' 9"	20 600	20 600	45 420	19 900	43 870
	26.0	85' 4"	18 400	18 400	40 570	17 700	39 020
	28.0	91'10"	16 500	16 500	36 380	15 900	35 050
	30.0	98' 5"	14 900	14 900	32 850	14 300	31 530
	32.0	105' 0"	13 500	13 500	29 760	13 000	28 660
	34.0	111' 7"	12 300	12 300	27 120	11 800	26 010
	36.0	118' 1"	11 200	11 200	24 690	10 800	23 810
	38.0	124' 8"	10 300	10 300	22 710	9 900	21 830
	40.0	131' 3"	9 500	9 500	20 940	9 100	20 060
	42.0	137'10"	8 700	8 700	19 180	8 400	18 520
44.0	144' 4"	8 100	8 100	17 860	7 700	16 980	
46.0	150'11"	7 500	7 400	16 310	7 200	15 870	
48.0	157' 6"	6 700	6 700	14 770	6 700	14 770	
48.4	158'10"	6 600	6 600	14 550	6 600	14 550	
57.0 (187'0")	11.8	38' 9"	47 500	40 100	88 410	47 500	104 700
	12.0	39' 4"	47 500	39 900	87 960	47 500	104 700
	14.0	45'11"	43 800	38 200	84 220	42 400	93 480
	16.0	52' 6"	36 300	36 300	80 030	35 100	77 380
	18.0	59' 1"	30 700	30 700	67 680	29 700	65 480
	20.0	65' 7"	26 400	26 400	58 200	25 500	56 220
	22.0	72' 2"	23 100	23 100	50 930	22 300	49 160
	24.0	78' 9"	20 300	20 300	44 750	19 600	43 210
	26.0	85' 4"	18 100	18 100	39 900	17 400	38 360
	28.0	91'10"	16 200	16 200	35 710	15 600	34 390
	30.0	98' 5"	14 600	14 600	32 190	14 000	30 860
	32.0	105' 0"	13 200	13 200	29 100	12 700	28 000
	34.0	111' 7"	12 000	12 000	26 460	11 500	25 350
	36.0	118' 1"	10 900	10 900	24 030	10 500	23 150
	38.0	124' 8"	10 000	10 000	22 050	9 600	21 160
	40.0	131' 3"	9 200	9 200	20 280	8 800	19 400
	42.0	137'10"	8 400	8 400	18 520	8 100	17 860
44.0	144' 4"	7 700	7 700	16 980	7 400	16 310	
46.0	150'11"	7 100	7 100	15 650	6 900	15 210	
48.0	157' 6"	6 600	6 500	14 330	6 300	13 890	
50.0	164' 1"	5 900	5 900	13 010	5 900	13 010	
51.0	167' 4"	5 500	5 500	12 130	5 500	12 130	

Boom length	Working radius		Rated load				
			JIS rating	BS rating		PCSA rating	
m(ft in)	m	ft in	kg	kg	lb	kg	lb
60.0 (196'10")	12.3	40' 4"	46 000	35 800	78 930	46 000	101 400
	14.0	45'11"	42 000	34 400	75 840	42 000	92 590
	16.0	52' 6"	36 100	32 900	72 530	34 900	76 940
	18.0	59' 1"	30 500	30 500	67 240	29 500	65 040
	20.0	65' 7"	26 200	26 200	57 760	25 300	55 780
	22.0	72' 2"	22 900	22 900	50 490	22 100	48 720
	24.0	78' 9"	20 100	20 100	44 310	19 400	42 770
	26.0	85' 4"	17 900	17 900	39 460	17 200	37 920
	28.0	91'10"	16 000	16 000	35 270	15 400	33 950
	30.0	98' 5"	14 400	14 400	31 750	13 800	30 420
	32.0	105' 0"	13 000	13 000	28 660	12 500	27 560
	34.0	111' 7"	11 800	11 800	26 010	11 300	24 910
	36.0	118' 1"	10 700	10 700	23 590	10 300	22 710
	38.0	124' 8"	9 800	9 800	21 610	9 400	20 720
	40.0	131' 3"	8 900	8 900	19 620	8 600	18 960
	42.0	137'10"	8 200	8 200	18 080	7 900	17 420
	44.0	144' 4"	7 500	7 400	16 310	7 200	15 870
46.0	150'11"	6 900	6 800	14 990	6 700	14 770	
48.0	157' 6"	6 300	6 200	13 670	6 100	13 450	
50.0	164' 1"	5 800	5 700	12 570	5 600	12 350	
52.0	170' 7"	5 200	5 200	11 460	5 200	11 460	
53.6	175'10"	4 600	4 600	10 140	4 600	10 140	
63.0 (206'8")	12.8	42' 0"	36 000	31 500	69 450	36 000	79 370
	14.0	45'11"	36 000	30 600	67 460	36 000	79 370
	16.0	52' 6"	36 000	29 200	64 380	34 800	76 720
	18.0	59' 1"	30 400	28 000	61 730	29 400	64 820
	20.0	65' 7"	26 100	26 100	57 540	25 200	55 560
	22.0	72' 2"	22 700	22 700	50 040	21 900	48 280
	24.0	78' 9"	20 000	20 000	44 090	19 300	42 550
	26.0	85' 4"	17 700	17 700	39 020	17 100	37 700
	28.0	91'10"	15 800	15 800	34 830	15 300	33 730
	30.0	98' 5"	14 200	14 200	31 310	13 700	30 200
	32.0	105' 0"	12 800	12 800	28 220	12 400	27 340
	34.0	111' 7"	11 600	11 600	25 570	11 200	24 690
	36.0	118' 1"	10 500	10 500	23 150	10 200	22 490
	38.0	124' 8"	9 600	9 600	21 160	9 200	20 280
	40.0	131' 3"	8 800	8 800	19 400	8 400	18 520
	42.0	137'10"	8 000	7 900	17 420	7 700	16 980
	44.0	144' 4"	7 300	7 200	15 870	7 100	15 650
46.0	150'10"	6 700	6 600	14 550	6 500	14 330	
48.0	157' 6"	6 100	6 000	13 230	5 900	13 010	
50.0	164' 1"	5 500	5 400	11 900	5 500	12 130	
52.0	170' 7"	5 000	4 900	10 800	5 000	11 020	
54.0	177' 2"	4 500	4 500	9 920	4 500	9 920	
56.0	183' 9"	4 100	4 100	9 040	4 100	9 040	
56.2	184' 5"	4 000	4 000	8 820	4 000	8 820	

Boom length	Working radius		Rated load					Boom length	Working radius		Rated load				
			JIS rating		BS rating		PCSA rating				JIS rating		BS rating		PCSA rating
m(ft in)	m	ft in	kg	kg	lb	kg	lb	m(ft in)	m	ft in	kg	kg	lb	kg	lb
45.0 (147'8")	9.7	31' 10"	69 000	69 000	152 100	69 000	152 100	54.0 (177'2")	11.2	36' 9"	47 500	47 500	104 700	47 500	104 700
	10.0	32' 10"	69 000	69 000	152 100	69 000	152 100		12.0	39' 4"	47 500	47 500	104 700	47 500	104 700
	12.0	39' 4"	56 300	56 300	124 100	54 700	120 600		14.0	45' 11"	44 900	44 900	98 990	43 600	96 120
	14.0	45' 11"	45 300	45 300	99 870	43 900	96 780		16.0	52' 6"	37 300	37 300	82 230	36 100	79 590
	16.0	52' 6"	37 600	37 600	82 890	36 500	80 470		18.0	59' 1"	31 600	31 600	69 670	30 600	67 460
	18.0	59' 1"	32 000	32 000	70 550	31 000	68 340		20.0	65' 7"	27 200	27 200	59 970	26 400	58 200
	20.0	65' 7"	27 700	27 700	61 070	26 800	59 080		22.0	72' 2"	23 800	23 800	52 470	23 000	50 710
	22.0	72' 2"	24 200	24 200	53 350	23 400	51 590		24.0	78' 9"	21 000	21 000	46 300	20 300	44 750
	24.0	78' 9"	21 500	21 500	47 400	20 700	45 640		26.0	85' 4"	18 700	18 700	41 230	18 100	39 900
	26.0	85' 4"	19 200	19 200	42 330	18 500	40 790		28.0	91' 10"	16 400	16 400	36 160	16 200	35 710
	28.0	91' 10"	17 200	17 200	37 920	16 700	36 820		30.0	98' 5"	14 900	14 900	32 850	14 600	32 190
	30.0	98' 5"	15 600	15 600	34 390	15 100	33 290		32.0	105' 0"	13 500	13 500	29 760	13 300	29 320
	32.0	105' 0"	14 200	14 200	31 310	13 700	30 200		34.0	111' 7"	12 600	12 600	27 780	12 100	26 680
	34.0	111' 7"	13 000	13 000	28 660	12 500	27 560		36.0	118' 1"	11 400	11 400	25 130	11 000	24 250
	36.0	118' 1"	11 900	11 900	26 240	11 500	25 350		38.0	124' 8"	10 500	10 500	23 150	10 100	22 270
	38.0	124' 8"	11 000	11 000	24 250	10 600	23 370		40.0	131' 3"	9 600	9 600	21 160	9 300	20 500
	40.0	131' 3"	10 200	10 200	22 490	9 800	21 610		42.0	137' 10"	8 800	8 800	19 400	8 500	18 740
40.6	133' 2"	9 900	9 900	21 830	9 600	21 160	44.0	144' 4"	8 200	8 200	18 080	7 900	17 420		
48.0 (157'6")	10.2	33' 6"	58 800	58 800	129 600	58 800	129 600	46.0	150' 11"	7 500	7 500	16 530	7 300	16 090	
	12.0	39' 4"	56 100	56 100	123 700	54 600	120 400	48.0	157' 6"	7 000	7 000	15 430	6 700	14 770	
	14.0	45' 11"	45 200	45 200	99 650	43 800	96 560	48.4	158' 10"	6 900	6 800	14 990	6 600	14 550	
	16.0	52' 6"	37 500	37 500	82 670	36 300	80 030	57.0 (187'0")	11.8	38' 9"	47 500	44 300	97 660	47 500	104 700
	18.0	59' 1"	31 800	31 800	70 110	30 800	67 900		12.0	39' 4"	47 500	44 100	97 220	47 500	104 700
	20.0	65' 7"	27 500	27 500	60 630	26 600	58 640		14.0	45' 11"	44 700	42 300	93 260	43 400	95 680
	22.0	72' 2"	24 100	24 100	53 130	23 300	51 370		16.0	52' 6"	37 000	37 000	81 570	35 900	79 150
	24.0	78' 9"	21 300	21 300	46 960	20 600	45 420		18.0	59' 1"	31 300	31 300	69 000	30 300	66 800
	26.0	85' 4"	19 000	19 000	41 890	18 300	40 340		20.0	65' 7"	27 000	27 000	59 520	26 100	57 540
	28.0	91' 10"	17 100	17 100	37 700	16 500	36 380		22.0	72' 2"	23 500	23 500	51 810	22 800	50 270
	30.0	98' 5"	15 400	15 400	33 950	14 900	32 850		24.0	78' 9"	20 800	20 800	45 860	20 100	44 310
	32.0	105' 0"	14 000	14 000	30 860	13 500	29 760		26.0	85' 4"	18 500	18 500	40 790	17 800	39 240
	34.0	111' 7"	12 800	12 800	28 220	12 300	27 120		28.0	91' 10"	16 500	16 500	36 380	16 000	35 270
36.0	118' 1"	11 700	11 700	25 790	11 300	24 910	30.0		98' 5"	14 900	14 900	32 850	14 400	31 750	
38.0	124' 8"	10 800	10 800	23 810	10 400	22 930	32.0		105' 0"	13 400	13 400	29 540	13 000	28 660	
40.0	131' 3"	9 900	9 900	21 830	9 600	21 160	34.0		111' 7"	12 200	12 200	26 900	11 800	26 010	
42.0	137' 10"	9 200	9 200	20 280	8 900	19 620	36.0	118' 1"	11 100	11 100	24 470	10 700	23 590		
43.2	141' 9"	8 800	8 800	19 400	8 500	18 740	38.0	124' 8"	10 200	10 200	22 490	9 800	21 610		
51.0 (167'4")	10.7	35' 1"	58 800	55 800	123 000	58 800	129 600	40.0	131' 3"	9 300	9 300	20 500	9 000	19 840	
	12.0	39' 4"	56 000	54 300	119 700	54 400	119 900	42.0	137' 10"	8 600	8 600	18 960	8 300	18 300	
	14.0	45' 11"	45 000	45 000	99 210	43 600	96 120	44.0	144' 4"	7 900	7 900	17 420	7 600	16 760	
	16.0	52' 6"	37 300	37 300	82 230	36 100	79 590	46.0	150' 11"	7 300	7 200	15 870	7 000	15 430	
	18.0	59' 1"	31 600	31 600	69 670	30 600	67 460	48.0	157' 6"	6 700	6 600	14 550	6 500	14 330	
	20.0	65' 7"	27 300	27 300	60 190	26 400	58 200	50.0	164' 1"	6 200	6 100	13 450	6 000	13 230	
	22.0	72' 2"	23 900	23 900	52 690	23 100	50 930	51.0	167' 1"	5 900	5 800	12 790	5 700	12 570	
	24.0	78' 9"	21 100	21 100	46 520	20 400	44 970								
	26.0	85' 4"	18 800	18 800	41 450	18 200	40 120								
	28.0	91' 10"	16 900	16 900	37 260	16 300	35 940								
	30.0	98' 5"	15 200	15 200	33 510	14 700	32 410								
	32.0	105' 0"	13 800	13 800	30 420	13 300	29 320								
	34.0	111' 7"	12 600	12 600	27 780	12 100	26 680								
	36.0	118' 1"	11 500	11 500	25 350	11 100	24 470								
	38.0	124' 8"	10 600	10 600	23 370	10 200	22 490								
	40.0	131' 3"	9 700	9 700	21 380	9 400	20 720								
	42.0	137' 10"	9 000	9 000	19 840	8 600	18 960								
	44.0	144' 4"	8 300	8 300	18 300	8 000	17 640								
45.8	150' 3"	7 700	7 700	16 980	7 500	16 530									

Continued on next page

Boom length	Working radius		Rated load					Boom length	Working radius		Rated load				
			JIS rating	BS rating		PCSA rating					JIS rating	BS rating		PCSA rating	
				kg	kg	lb	kg					lb	kg	kg	lb
m(ft in)	m	ft in	kg	kg	lb	kg	lb	m(ft in)	m	ft in	kg	kg	lb	kg	lb
60.0 (196'10")	12.3	40' 4"	46 000	39 600	87 300	46 000	101 400	66.0 (216'6")	13.3	43' 8"	36 000	31 800	70 110	36 000	79 370
	14.0	45'11"	44 500	38 300	84 440	43 200	95 240		14.0	45'11"	36 000	31 300	69 000	36 000	79 370
	16.0	52' 6"	36 800	36 800	81 130	35 700	78 710		16.0	52' 6"	36 000	30 100	66 360	35 700	78 710
	18.0	59' 1"	31 100	31 100	68 560	30 200	66 580		18.0	59' 1"	31 200	28 800	63 490	30 200	66 580
	20.0	65' 7"	26 800	26 800	59 080	25 900	57 100		20.0	65' 7"	26 800	26 800	59 080	25 900	57 100
	22.0	72' 2"	23 400	23 400	51 590	22 600	49 820		22.0	72' 2"	23 400	23 400	51 590	22 600	49 820
	24.0	78' 9"	20 600	20 600	45 420	19 900	43 870		24.0	78' 9"	20 600	20 600	45 420	19 900	43 870
	26.0	85' 4"	18 300	18 300	40 340	17 600	38 800		26.0	85' 4"	18 300	18 300	40 340	17 600	38 800
	28.0	91'10"	16 300	16 300	35 940	15 800	34 830		28.0	91'10"	16 300	16 300	35 940	15 800	34 830
	30.0	98' 5"	14 700	14 700	32 410	14 200	31 310		30.0	98' 5"	14 700	14 700	32 410	14 200	31 310
	32.0	105' 0"	13 200	13 200	29 100	12 800	28 220		32.0	105' 0"	13 200	13 200	29 100	12 800	28 220
	34.0	111' 7"	12 000	12 000	26 460	11 600	25 570		34.0	111' 7"	12 000	12 000	26 460	11 600	25 570
	36.0	118' 1"	10 900	10 900	24 030	10 500	23 150		36.0	118' 1"	10 900	10 900	24 030	10 500	23 150
	38.0	124' 8"	10 000	10 000	22 050	9 600	21 160		38.0	124' 8"	9 900	9 900	21 830	9 600	21 160
	40.0	131' 3"	9 100	9 100	20 060	8 800	19 400		40.0	131' 3"	9 100	9 100	20 060	8 800	19 400
	42.0	137'10"	8 300	8 300	18 300	8 100	17 860		42.0	137'10"	8 300	8 300	18 300	8 000	17 640
	44.0	144' 4"	7 700	7 600	16 760	7 400	16 310		44.0	144' 4"	7 600	7 600	16 760	7 400	16 310
	46.0	150'11"	7 000	7 000	15 430	6 800	14 990		46.0	150'11"	7 000	6 900	15 210	6 700	14 770
48.0	157' 6"	6 500	6 400	14 110	6 300	13 890	48.0	157' 6"	6 400	6 300	13 890	6 200	13 670		
50.0	164' 1"	5 900	5 800	12 790	5 800	12 790	50.0	164' 1"	5 800	5 700	12 570	5 700	12 570		
52.0	170' 7"	5 400	5 300	11 680	5 300	11 680	52.0	170' 7"	5 200	5 200	11 460	5 200	11 460		
53.6	175'10"	5 000	5 000	11 020	5 000	11 020	54.0	177' 2"	4 800	4 800	10 580	4 800	10 580		
63.0 (206'8")	12.8	42' 0"	36 000	35 100	77 380	36 000	79 370	56.0	183' 9"	4 300	4 300	9 480	4 300	9 480	
	14.0	45'11"	36 000	34 200	75 400	36 000	79 370	58.0	190' 3"	3 900	3 900	8 600	3 900	8 600	
	16.0	52' 6"	36 000	32 800	72 310	35 600	78 480	58.8	192'11"	3 700	3 700	8 160	3 700	8 160	
	18.0	59' 1"	31 100	31 100	68 560	30 100	66 360	69.0 (226'5")	13.9	45' 7"	36 000	28 400	62 610	36 000	79 370
	20.0	65' 7"	26 700	26 700	58 860	25 800	56 880		14.0	45'11"	36 000	28 400	62 610	36 000	79 370
	22.0	72' 2"	23 200	23 200	51 150	22 500	49 600		16.0	52' 6"	36 000	27 200	59 970	35 500	78 260
	24.0	78' 9"	20 400	20 400	44 970	19 800	43 650		18.0	59' 1"	30 900	26 000	57 320	29 900	65 920
	26.0	85' 4"	18 100	18 100	39 900	17 500	38 580		20.0	65' 7"	26 600	25 000	55 120	25 700	56 660
	28.0	91'10"	16 200	16 200	35 710	15 600	34 390		22.0	72' 2"	23 100	23 100	50 930	22 300	49 160
	30.0	98' 5"	14 500	14 500	31 970	14 000	30 860		24.0	78' 9"	20 300	20 300	44 750	19 600	43 210
	32.0	105' 0"	13 100	13 100	28 880	12 700	28 000		26.0	85' 4"	18 000	18 000	39 680	17 400	38 360
	34.0	111' 7"	11 900	11 900	26 240	11 500	25 350		28.0	91'10"	16 100	16 100	35 490	15 500	34 170
	36.0	118' 1"	10 800	10 800	23 810	10 400	22 930		30.0	98' 5"	14 400	14 400	31 750	13 900	30 640
	38.0	124' 8"	9 800	9 800	21 610	9 500	20 940		32.0	105' 0"	13 000	13 000	28 660	12 500	27 560
	40.0	131' 3"	8 900	8 900	19 620	8 600	18 960		34.0	111' 7"	11 700	11 700	25 790	11 300	24 910
	42.0	137'10"	8 200	8 200	18 080	7 900	17 420		36.0	118' 1"	10 600	10 600	23 370	10 300	22 710
	44.0	144' 4"	7 500	7 400	16 310	7 200	15 870		38.0	124' 8"	9 700	9 700	21 380	9 300	20 500
	46.0	150'11"	6 900	6 700	14 770	6 600	14 550		40.0	131' 3"	8 800	8 800	19 400	8 500	18 740
48.0	157' 6"	6 200	6 100	13 450	6 100	13 450	42.0		137'10"	8 000	8 000	17 640	7 800	17 200	
50.0	164' 1"	5 600	5 600	12 350	5 600	12 350	44.0		144' 4"	7 300	7 200	15 870	7 100	15 650	
52.0	170' 7"	5 100	5 100	11 240	5 100	11 240	46.0		150'11"	6 700	6 600	14 550	6 500	14 330	
54.0	177' 2"	4 600	4 600	10 140	4 600	10 140	48.0	157' 6"	6 000	6 000	13 230	5 900	13 010		
56.0	183' 9"	4 200	4 200	9 260	4 200	9 260	50.0	164' 1"	5 400	5 400	11 900	5 400	11 900		
56.2	184' 5"	4 100	4 100	9 040	4 100	9 040	52.0	170' 7"	4 900	4 900	10 800	4 900	10 800		
							54.0	177' 2"	4 400	4 400	9 700	4 400	9 700		
							56.0	183' 9"	4 000	4 000	8 820	4 000	8 820		
							58.0	190' 3"	3 500	3 500	7 720	3 500	7 720		
							60.0	196'10"	3 200	3 200	7 050	3 200	7 050		
							61.4	201' 5"	2 900	2 900	6 390	2 900	6 390		





# Rated Load for Main Boom

Boom length	Working radius		Rated load				
			JIS rating	BS rating		PCSA rating	
m(ft in)	m	ft in	kg	kg	lb	kg	lb
84.0 (275'7")	16.5	54' 2"	22 000	16 200	35 710	22 000	48 500
	18.0	59' 1"	21 000	15 500	34 170	21 000	46 300
	20.0	65' 7"	20 500	14 800	32 630	20 500	45 190
	22.0	72' 2"	20 000	14 100	31 090	20 000	44 090
	24.0	78' 9"	18 700	13 400	29 540	18 700	41 230
	26.0	85' 4"	17 300	12 800	28 220	16 700	36 820
	28.0	91' 10"	15 400	12 200	26 900	14 800	32 630
	30.0	98' 5"	13 700	11 600	25 570	13 200	29 100
	32.0	105' 0"	12 300	11 100	24 470	11 800	26 010
	34.0	111' 7"	11 000	10 600	23 370	10 600	23 370
	36.0	118' 1"	9 900	9 900	21 830	9 600	21 160
	38.0	124' 8"	9 000	8 900	19 620	8 600	18 960
	40.0	131' 3"	8 100	8 000	17 640	7 800	17 200
	42.0	137' 10"	7 200	7 100	15 650	7 100	15 650
	44.0	144' 4"	6 400	6 400	14 110	6 400	14 110
	46.0	150' 11"	5 700	5 700	12 570	5 700	12 570
	48.0	157' 6"	5 100	5 100	11 240	5 100	11 240
	50.0	164' 1"	4 500	4 500	9 920	4 500	9 920
	52.0	170' 7"	3 900	3 900	8 600	3 900	8 600
	54.0	177' 2"	3 400	3 400	7 500	3 400	7 500
56.0	183' 9"	3 000	3 000	6 610	2 900	6 390	
58.0	190' 3"	2 500	2 500	5 510	2 500	5 510	
60.0	196' 10"	2 100	2 100	4 630	2 100	4 630	

## Notes:

1. The rated loads shown are based on the machine on firm level ground without traveling.
2. The rated loads shown include the weights of all lifting attachments, such as hook and bucket. The load to be actually lifted is the rated load minus the weight of all lifting attachments.
3. The loads marked by  are based upon structural strength limitation of the machine.
4. Counterweight is 57 700 kg (127 200 lb).
5. In operation, crawlers must be extended
6. When using a mast, the gantry postures a semi-gantry.

# Main Boom & Jib Construction

## Main Boom Construction

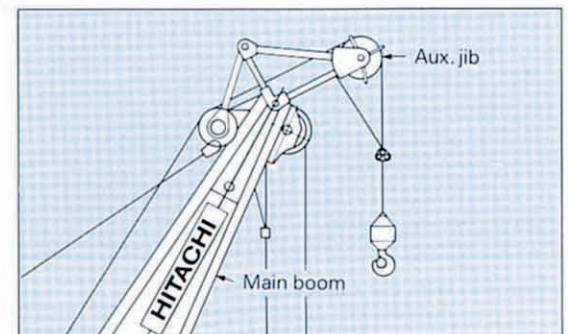
Boom Length	18.0 m (59'1")	21.0 m (68'11")	24.0 m (78'9")	27.0 m (88'7")	30.0 m (98'5")	33.0 m (108'3")	36.0 m (118'1")	39.0 m (127'11")	42.0 m (137'10")	45.0 m (147'8")	48.0 m (157'6")	51.0 m (167'4")	54.0 m (177'2")	57.0 m (187'0")	60.0 m (196'10")	63.0 m (206'8")	66.0 m (216'6")	69.0 m (226'5")	72.0 m (236'3")	75.0 m (246'1")	78.0 m (255'11")	81.0 m (265'9")	84.0 m (275'7")	
<b>Element</b>																								
Lower 7.5 m(24'7")	1	1	1	1	1	1	1	1	1	1	1	1	1	1	1	1	1	1	1	1	1	1	1	
Upper 10.5 m(34'5")	1	1	1	1	1	1	1	1	1	1	1	1	1	1	1	1	1	1	1	1	1	1	1	
Insert A 3.0 m(9'10")	-	1	2	1	2	1	2	2	1	1	2	1	1	2	1	2	1	2	2	1	1	2	1	
Insert 6.0 m(19'8")	-	-	-	1	1	2	2	1	2	1	1	2	1	1	2	2	1	1	1	2	1	1	2	
Insert 9.0 m(29'6")	-	-	-	-	-	-	-	1	1	2	2	2	3	3	3	3	3	3	2	2	3	3	3	
Insert 12.0 m(39'4")	-	-	-	-	-	-	-	-	-	-	-	-	-	-	-	-	1	1	2	2	2	2	2	
Without mast	←																→							
With mast	←										→													
Available hook	150 000 kg(330 700 lb)capacity hook					100 000 kg(220 500 lb)capacity hook							60 000 kg(132 300 lb)capacity hook						25 000 kg(55 120 lb) capacity hook					
Attachable Jib	←										13 m(42'8") to 31 m(101'8") Jib												→	
Auxiliary Jib	←																→							

## Jib Construction

Jib length	13.0 m (42'8")	19.0 m (62'4")	25.0 m (82'0")	31.0 m (101'8")
<b>Element</b>				
Lower 5.5 m(16'5")	1	1	1	1
Upper 5.0 m(16'5")	1	1	1	1
Insert 3.0 m(9'10")	1	1	1	1
Insert 6.0 m(19'8")	-	1	2	3
Number of rope reevings	1	1	1	1
Available hook	12 500 kg(27 560 lb)capacity hook			

### Auxiliary jib (Optional)

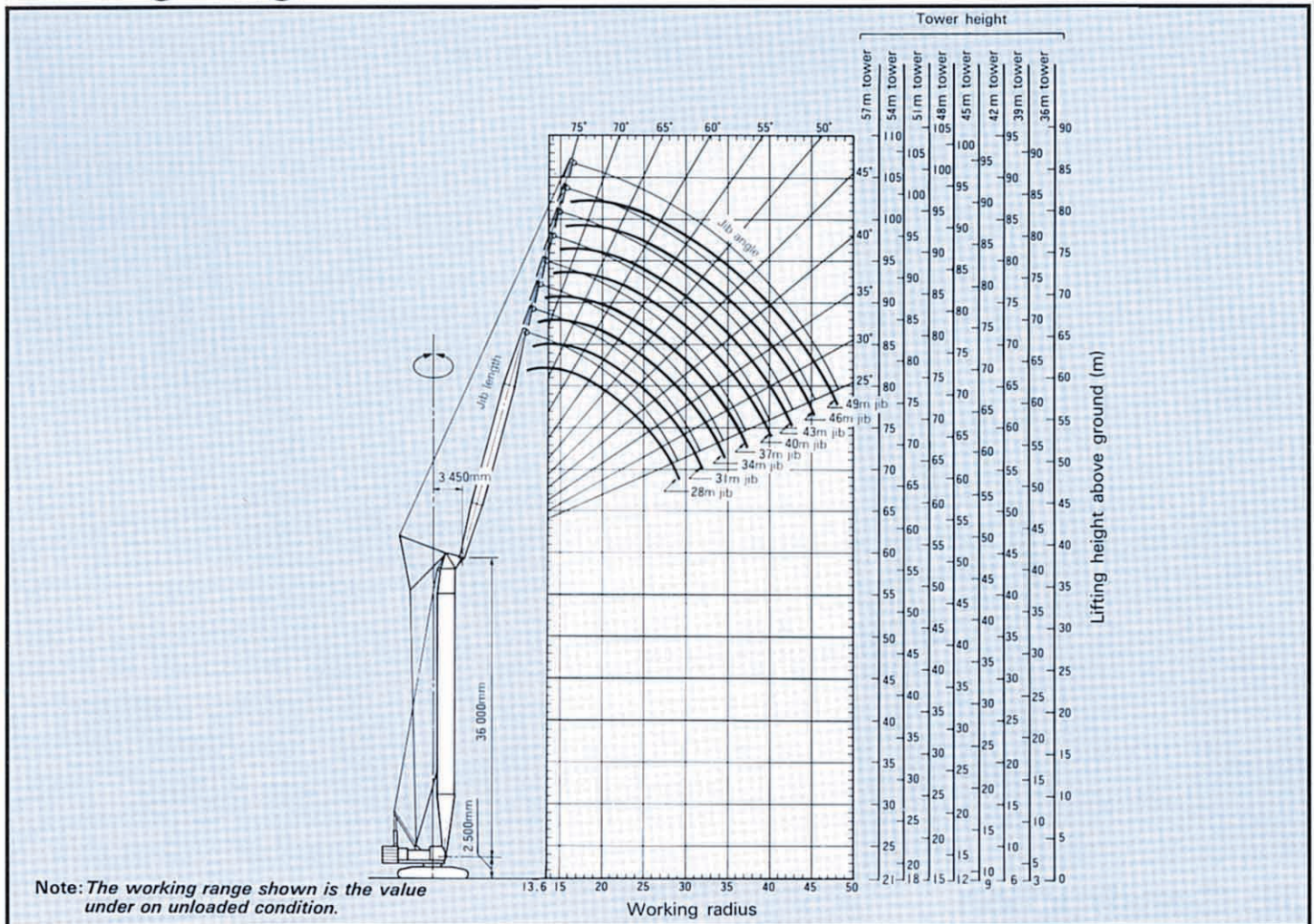
Attachable to main boom top for hoisting light-weight load quickly with a single rope used. (Never use the main and auxiliary hooks at the same time.)



# TOWER CRANE

## With Tubular TOWER Boom

### Working Ranges (90° Tower Angle)



### Specifications

Maximum rated load	23 000 kg (50 700 lb) at 14 m (45' 11")
Tower boom length	36 m (118' 1") to 57 m (187' 0")
Jib length	28 m (91' 10") to 49 m (160' 9")
Max. tower boom + Jib boom	57 m (187' 0") + 49 m (160' 9")
Working radius*1	13.5 m (44' 3") to 60.7 m (199' 2")
Maximum lifting height above ground	102 m (334' 8")
Ground pressure	1.02 bar (1.02 kgf/cm <sup>2</sup> , 14.5 psi)
Operating weight	Equipped with 57 m (187' 0") tower boom, 49 m (160' 9") jib, 25 000 kg (55 120 lb) capacity hook and 57 700 kg (127 200 lb) counterweight 167 000 kg (368 200 lb)

Notes: \*1 With the load being lifted.  
For common specifications which are not listed above, refer to P.1 and P.2

**JIS Rating:**

The rated loads shown don't exceed 78% of tipping loads with the machine on firm level ground.

**PCSA Rating:**

The rated loads, listed are determined according to PCSA(Power Crane and Shovel Association in U.S.A) and do not exceed 75% of tipping load on condition that the machine is stationed on firm, level ground.

**Rated Loads (90° Tower Angle)**

Tower length	Jib length	Working radius		Rated load			Tower length	Jib length	Working radius		Rated load		
				JIS rating	PCSA rating						JIS rating	PCSA rating	
m(ft in)	m(ft in)	m	ft in	kg	kg	lb	m(ft in)	m(ft in)	m	ft in	kg	kg	lb
36.0 (118'1") to 57.0 (187'0")	28.0 (91'10")	13.6	44' 7"	23 000	23 000	50 700	42.0 (137'10") to 57.0 (187'0")	37.0 (121'5")	16.4	53' 10"	18 900	18 900	41 660
		14.0	45' 11"	23 000	23 000	50 700			18.0	59' 1"	18 100	18 100	39 900
		16.0	52' 6"	20 500	20 500	45 190			20.0	65' 7"	16 600	16 600	36 590
		18.0	59' 1"	18 400	18 400	40 560			22.0	72' 2"	15 100	15 100	33 280
		20.0	65' 7"	16 600	16 600	36 590			24.0	78' 9"	13 800	13 800	30 420
		22.0	72' 2"	15 100	15 100	33 280			26.0	85' 4"	12 500	12 500	27 550
		24.0	78' 9"	13 800	13 800	30 420			28.0	91' 10"	11 300	11 300	24 910
		26.0	85' 4"	12 500	12 500	27 550			30.0	98' 5"	10 200	10 200	22 480
		28.0	91' 10"	11 300	11 300	24 910			32.0	105' 0"	9 400	9 400	20 720
	28.9	94' 10"	10 900	10 900	24 030	34.0	111' 7"	8 700	8 700	19 180			
	31.0 (101'8")	14.3	46' 11"	21 700	21 700	47 840	36.0	118' 1"	8 000	8 000	17 630		
		16.0	52' 6"	20 500	20 500	45 190	37.1	121' 9"	7 600	7 600	16 750		
		18.0	59' 1"	18 400	18 400	40 560	45.0 (147'8") to 57.0 (187'0")	40.0 (131'3")	17.1	56' 1"	17 400	17 400	38 360
		20.0	65' 7"	16 600	16 600	36 590			18.0	59' 1"	17 000	17 000	37 470
		22.0	72' 2"	15 100	15 100	33 280			20.0	65' 7"	16 200	16 200	35 710
		24.0	78' 9"	13 800	13 800	30 420			22.0	72' 2"	15 100	15 100	33 280
		26.0	85' 4"	12 500	12 500	27 550			24.0	78' 9"	13 800	13 800	30 420
		28.0	91' 10"	11 300	11 300	24 910			26.0	85' 4"	12 500	12 500	27 550
30.0		98' 5"	10 200	10 200	22 480	28.0			91' 10"	11 300	11 300	24 910	
31.7	104' 0"	9 600	9 600	21 160	30.0	98' 5"			10 200	10 200	22 480		
39.0 (127'11") to 57.0 (187'0")	34.0 (111'7")	15.3	50' 2"	20 500	20 500	45 190			32.0	105' 0"	9 400	9 400	20 720
		16.0	52' 6"	20 000	20 000	44 090	34.0	111' 7"	8 700	8 700	19 180		
		18.0	59' 1"	18 400	18 400	40 560	36.0	118' 1"	8 000	8 000	17 630		
		20.0	65' 7"	16 600	16 600	36 590	38.0	124' 8"	7 400	7 400	16 310		
		22.0	72' 2"	15 100	15 100	33 280	39.8	130' 7"	7 000	7 000	15 430		
		24.0	78' 9"	13 800	13 800	30 420	48.0 (157'6") to 57.0 (187'0")	43.0 (141'1")	18.0	59' 1"	15 100	15 100	33 280
		26.0	85' 4"	12 500	12 500	27 550			20.0	65' 7"	14 500	14 500	31 960
		28.0	91' 10"	11 300	11 300	24 910			22.0	72' 2"	13 900	13 900	30 640
		30.0	98' 5"	10 200	10 200	22 480			24.0	78' 9"	13 200	13 200	29 100
		32.0	105' 0"	9 400	9 400	20 720			26.0	85' 4"	12 500	12 500	27 550
		34.0	111' 7"	8 700	8 700	19 180			28.0	91' 10"	11 300	11 300	24 910
		34.4	112' 10"	8 600	8 600	18 950			30.0	98' 5"	10 200	10 200	22 480
					32.0	105' 0"			9 400	9 400	20 720		
					34.0	111' 7"			8 700	8 700	19 180		
					36.0	118' 1"			8 000	8 000	17 630		
					38.0	124' 8"			7 400	7 400	16 310		
					40.0	131' 3"			6 800	6 800	14 990		
					42.0	137' 10"	6 300	6 300	13 880				
					42.5	139' 5"	6 200	6 200	13 660				

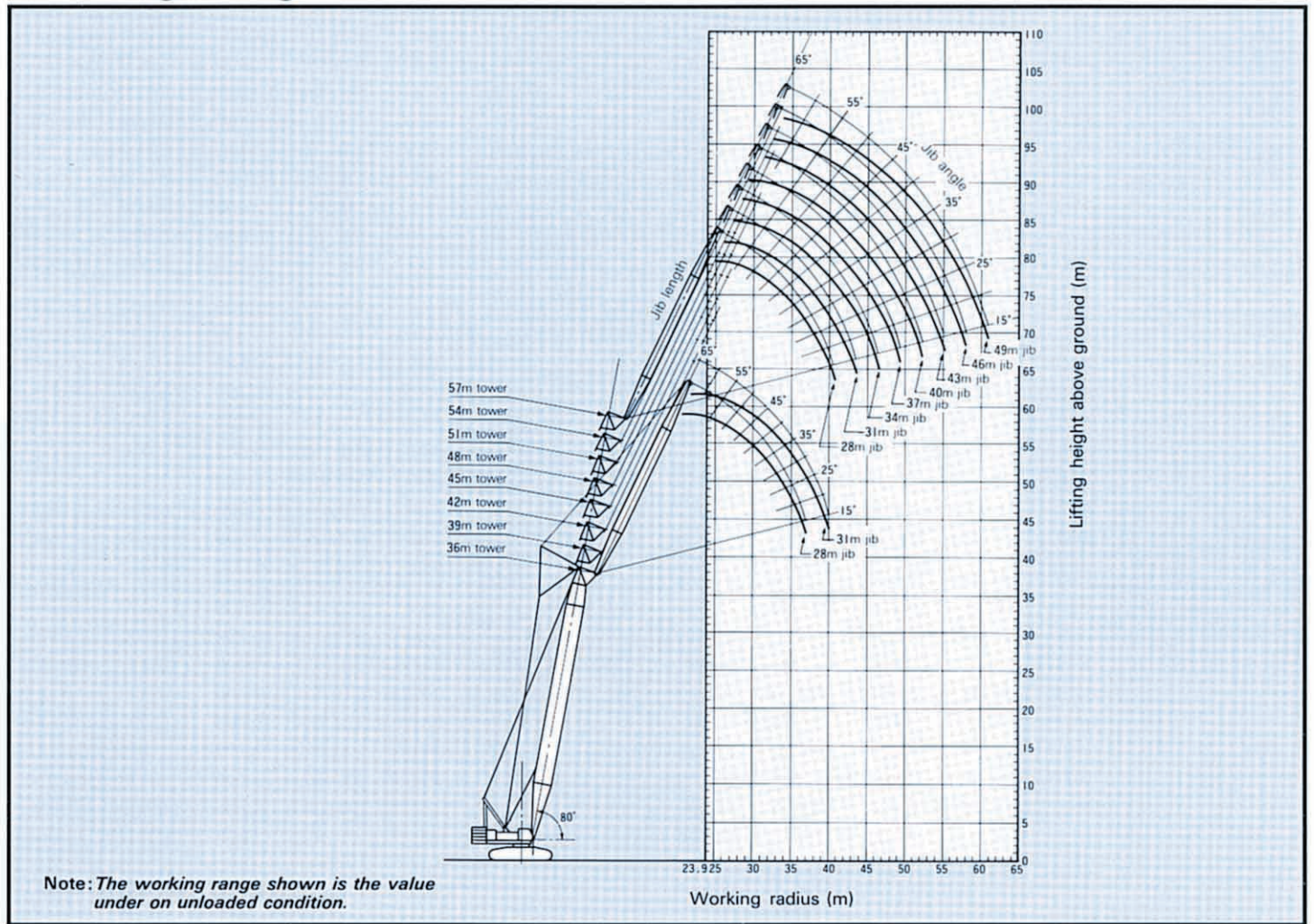
Continued on next page

Tower length	Jib length	Working radius		Rated load		
				JIS rating	PCSA rating	
m(ft in)	m(ft in)	m	ft in	kg	kg	lb
51.0 (167'4") to 57.0 (187'0")	46.0 (150'11")	18.7	61' 4"	14 000	14 000	30 860
		20.0	65' 7"	13 500	13 500	29 760
		22.0	72' 2"	12 800	12 800	28 210
		24.0	78' 9"	12 200	12 200	26 890
		26.0	85' 4"	11 600	11 600	25 570
		28.0	91' 10"	11 000	11 000	24 250
		30.0	98' 5"	10 200	10 200	22 480
		32.0	105' 0"	9 400	9 400	20 720
		34.0	111' 7"	8 700	8 700	19 180
		36.0	118' 1"	8 000	8 000	17 630
		38.0	124' 8"	7 400	7 400	16 310
		40.0	131' 3"	6 800	6 800	14 990
		42.0	137' 10"	6 300	6 300	13 880
		44.0	144' 4"	5 900	5 900	13 000
		45.2	148' 4"	5 600	5 600	12 340
54.0 (177'2") to 57.0 (187'0")	49.0 (160'9")	19.3	63' 4"	11 700	11 700	25 790
		20.0	65' 7"	11 500	11 500	25 350
		22.0	72' 2"	11 100	11 100	24 470
		24.0	78' 9"	10 700	10 700	23 580
		26.0	85' 4"	10 300	10 300	22 700
		28.0	91' 10"	9 800	9 800	21 600
		30.0	98' 5"	9 300	9 300	20 500
		32.0	105' 0"	8 700	8 700	19 180
		34.0	111' 7"	8 200	8 200	18 070
		36.0	118' 1"	7 700	7 700	16 970
		38.0	124' 8"	7 200	7 200	15 870
		40.0	131' 3"	6 700	6 700	14 770
		42.0	137' 10"	6 300	6 300	13 880
		44.0	144' 4"	5 800	5 800	12 780
		46.0	150' 11"	5 300	5 300	11 680
48.0	157' 6"	4 700	4 700	10 360		

**Notes:**

- 1.The rated loads shown are based on the machine on firm, level ground.
- 2.The rated loads shown include the weights of all lifting attachments such as a hook. The load to be actually lifted is the rated load minus the weights of all lifting attachments.
- 3.The rated loads shown are limited by structural strength of the machine.
- 4.Counterweight is 57 700 kg(127 200 lb).
- 5.In operation, crawlers must be extended.

# Working Ranges (80° Tower Angle)



# Rated Loads (80° Tower Angle)

Tower length	Jib length	Working radius		Rated load			Tower length	Jib length	Working radius		Rated load		
				JIS rating	PCSA rating						JIS rating	PCSA rating	
m(ft in)	m(ft in)	m	ft in	kg	kg	lb	m(ft in)	m(ft in)	m	ft in	kg	kg	lb
<b>36.0</b> (118'1")	<b>28.0</b> (91'10")	23.9	78' 5"	13 900	13 900	30 640	<b>42.0</b> (137'10")	<b>28.0</b> (91'10")	25.0	82' 0"	131 00	13 100	28 880
		24.0	78' 9"	13 800	13 800	30 420			26.0	85' 4"	12 500	12 500	27 550
		26.0	85' 4"	12 500	12 500	27 550			28.0	91' 10"	11 300	11 300	24 910
		28.0	91' 10"	11 300	11 300	24 910			30.0	98' 5"	10 200	10 200	22 480
		30.0	98' 5"	10 200	10 200	22 480			32.0	105' 0"	9 400	9 400	20 720
		32.0	105' 0"	9 400	9 400	20 720			34.0	111' 7"	8 700	8 700	19 180
		34.0	111' 7"	8 700	8 700	19 180			36.0	118' 1"	8 000	8 000	17 630
		36.0	118' 1"	8 000	8 000	17 630			37.8	124' 0"	7 500	7 500	16 530
		36.8	120' 9"	7 800	7 800	17 190			<b>31.0</b> (101'8")	26.5	86' 11"	12 200	12 200
	25.3	83' 0"	12 900	12 900	28 430	28.0		91' 10"		11 300	11 300	24 910	
	26.0	85' 4"	12 500	12 500	27 550	30.0		98' 5"		10 200	10 200	22 480	
	28.0	91' 10"	11 300	11 300	24 910	32.0		105' 0"		9 400	9 400	20 720	
	30.0	98' 5"	10 200	10 200	22 480	34.0		111' 7"		8 700	8 700	19 180	
	32.0	105' 0"	9 400	9 400	20 720	36.0		118' 1"		8 000	8 000	17 630	
	34.0	111' 7"	8 700	8 700	19 180	38.0		124' 8"		7 400	7 400	16 310	
	36.0	118' 1"	8 000	8 000	17 630	40.0		131' 3"		6 800	6 800	14 990	
	38.0	124' 8"	7 400	7 400	16 310	40.7		133' 6"		6 600	6 600	14 550	
	39.7	130' 3"	6 900	6 900	15 210	<b>34.0</b> (111'7")		27.9	91' 6"	11 400	11 400	25 130	
<b>39.0</b> (127'11")	<b>28.0</b> (91'10")	24.5	80' 5"	13 500	13 500		29 760	28.0	91' 10"	11 300	11 300	24 910	
		26.0	85' 4"	12 500	12 500		27 550	30.0	98' 5"	10 200	10 200	22 480	
		28.0	91' 10"	11 300	11 300		24 910	32.0	105' 0"	9 400	9 400	20 720	
		30.0	98' 5"	10 200	10 200		22 480	34.0	111' 7"	8 700	8 700	19 180	
		32.0	105' 0"	9 400	9 400		20 720	36.0	118' 1"	8 000	8 000	17 630	
		34.0	111' 7"	8 700	8 700		19 180	38.0	124' 8"	7 400	7 400	16 310	
		36.0	118' 1"	8 000	8 000		17 630	40.0	131' 3"	6 800	6 800	14 990	
		37.3	122' 5"	7 000	7 000		15 430	42.0	137' 10"	6 300	6 300	13 880	
		<b>31.0</b> (101'8")	25.9	85' 0"	12 600	12 600	27 770	43.6	143' 1"	6 000	6 000	13 220	
	26.0		85' 4"	12 500	12 500	27 550	<b>37.0</b> (121'5")	29.3	96' 2"	10 600	10 600	23 360	
	28.0		91' 10"	11 300	11 300	24 910		30.0	98' 5"	10 200	10 200	22 480	
	30.0		98' 5"	10 200	10 200	22 480		32.0	105' 0"	9 400	9 400	20 720	
	32.0		105' 0"	9 400	9 400	20 720		34.0	111' 7"	8 700	8 700	19 180	
	34.0		111' 7"	8 700	8 700	19 180		36.0	118' 1"	8 000	8 000	17 630	
	36.0		118' 1"	8 000	8 000	17 630		38.0	124' 8"	7 400	7 400	16 310	
	38.0		124' 8"	7 400	7 400	16 310		40.0	131' 3"	6 800	6 800	14 990	
	40.0		131' 3"	6 800	6 800	14 990		42.0	137' 10"	6 300	6 300	13 880	
	40.2	131' 11"	6 700	6 700	14 770	44.0		144' 4"	5 900	5 900	13 000		
<b>34.0</b> (111'7")	27.3	89' 7"	11 700	11 700	25 790	46.0	150' 11"	5 400	5 400	11 900			
	28.0	91' 10"	11 300	11 300	24 910	46.5	152' 7"	5 300	5 300	11 680			
	30.0	98' 5"	10 200	10 200	22 480								
	32.0	105' 0"	9 400	9 400	20 720								
	34.0	111' 7"	8 700	8 700	19 180								
	36.0	118' 1"	8 000	8 000	17 630								
	38.0	124' 8"	7 400	7 400	16 310								
	40.0	131' 3"	6 800	6 800	14 990								
	42.0	137' 10"	6 300	6 300	13 880								
43.1	141' 5"	6 100	6 100	13 440									



Tower length	Jib length	Working radius		Rated load			Tower length	Jib length	Working radius		Rated load		
				JIS rating	PCSA rating						JIS rating	PCSA rating	
m(ft in)	m(ft in)	m	ft in	kg	kg	lb	m(ft in)	m(ft in)	m	ft in	kg	kg	lb
45.0 (147'8")	28.0 (91'10")	25.6	84' 0"	12 800	12 800	28 210	48.0 (157'6")	28.0 (91'10")	26.2	85' 11"	12 400	124 00	27 330
		26.0	85' 4"	12 500	12 500	27 550			28.0	91' 10"	11 300	113 00	24 910
		28.0	91' 10"	11 300	11 300	24 910			30.0	98' 5"	10 200	10 200	22 480
		30.0	98' 5"	10 200	10 200	22 480			32.0	105' 0"	9 400	9 400	20 720
		32.0	105' 0"	9 400	9 400	20 720			34.0	111' 7"	8 700	8 700	19 180
		34.0	111' 7"	8 700	8 700	19 180			36.0	118' 1"	8 000	8 000	17 630
		36.0	118' 1"	8 000	8 000	17 630			38.0	124' 8"	7 400	7 400	16 310
		38.0	124' 8"	7 400	7 400	16 310			38.9	127' 7"	7 100	7 100	15 560
		38.3	125' 8"	7 300	7 300	16 090			31.0 (101'8")	27.6	90' 7"	11 500	11 500
	31.0 (101'8")	27.0	88' 7"	11 900	11 900	26 230		28.0		91' 10"	11 300	11 300	24 910
		28.0	91' 10"	11 300	11 300	24 910		30.0		98' 5"	10 200	10 200	22 480
		30.0	98' 5"	10 200	10 200	22 480		32.0		105' 0"	9 400	9 400	20 720
		32.0	105' 0"	9 400	9 400	20 720		34.0		111' 7"	8 700	8 700	19 180
		34.0	111' 7"	8 700	8 700	19 180		36.0		118' 1"	8 000	8 000	17 630
		36.0	118' 1"	8 000	8 000	17 630		38.0		124' 8"	7 400	7 400	16 310
		38.0	124' 8"	7 400	7 400	16 310		40.0		131' 3"	6 800	6 800	14 990
		40.0	131' 3"	6 800	6 800	14 990		41.8		137' 2"	6 400	6 400	14 100
		41.2	135' 2"	6 500	6 500	14 330		34.0 (111'7")	29.0	95' 2"	10 700	10 700	23 580
	34.0 (111'7")	28.5	93' 6"	11 000	11 000	24 250			30.0	98' 5"	10 200	10 200	22 480
		30.0	98' 5"	10 200	10 200	22 480			32.0	105' 0"	9 400	9 400	20 720
		32.0	105' 0"	9 400	9 400	20 720			34.0	111' 7"	8 700	8 700	19 180
		34.0	111' 7"	8 700	8 700	19 180			36.0	118' 1"	8 000	8 000	17 630
		36.0	118' 1"	8 000	8 000	17 630			38.0	124' 8"	7 400	7 400	16 310
		38.0	124' 8"	7 400	7 400	16 310			40.0	131' 3"	6 800	6 800	14 990
		40.0	131' 3"	6 800	6 800	14 990			42.0	137' 10"	6 300	6 300	13 880
		42.0	137' 10"	6 300	6 300	13 880			44.0	144' 4"	5 900	5 900	13 000
		44.0	144' 4"	5 900	5 900	13 000		44.7	146' 8"	5 700	5 700	12 560	
	44.1	144' 8"	5 900	5 900	13 000	37.0 (121'5")		30.5	100' 1"	10 000	10 000	22 040	
	37.0 (121'5")	29.9	98' 1"	10 300	10 300			22 700	32.0	105' 0"	9 400	9 400	20 720
		30.0	98' 5"	10 200	10 200			22 480	34.0	111' 7"	8 700	8 700	19 180
		32.0	105' 0"	9 400	9 400			20 720	36.0	118' 1"	8 000	8 000	17 630
		34.0	111' 7"	8 700	8 700			19 180	38.0	124' 8"	7 400	7 400	16 310
		36.0	118' 1"	8 000	8 000			17 630	40.0	131' 3"	6 800	6 800	14 990
		38.0	124' 8"	7 400	7 400			16 310	42.0	137' 10"	6 300	6 300	13 880
		40.0	131' 3"	6 800	6 800			14 990	44.0	144' 4"	5 900	5 900	13 000
		42.0	137' 10"	6 300	6 300			13 880	46.0	150' 11"	5 400	5 400	11 900
		44.0	144' 4"	5 900	5 900	13 000		47.6	156' 2"	5 100	5 100	11 240	
	46.0	150' 11"	5 400	5 400	11 900	40.0 (131'3")		31.9	104' 8"	9 400	9 400	20 720	
	40.0 (131'3")	29.7	97' 10"	10 600	10 600			23 360	32.0	105' 0"	9 400	9 400	20 720
		30.0	98' 5"	10 200	10 200			22 480	34.0	111' 7"	8 700	8 700	19 180
		32.0	105' 0"	9 400	9 400			20 720	36.0	118' 1"	8 000	8 000	17 630
		34.0	111' 7"	8 700	8 700			19 180	38.0	124' 8"	7 400	7 400	16 310
		36.0	118' 1"	8 000	8 000			17 630	40.0	131' 3"	6 800	6 800	14 990
		38.0	124' 8"	7 400	7 400			16 310	42.0	137' 10"	6 300	6 300	13 880
		40.0	131' 3"	6 800	6 800			14 990	44.0	144' 4"	5 900	5 900	13 000
		42.0	137' 10"	6 300	6 300			13 880	46.0	150' 11"	5 400	5 400	11 900
		44.0	144' 4"	5 900	5 900	13 000		48.0	157' 6"	5 000	5 000	11 020	
	46.0	150' 11"	5 400	5 400	11 900	50.0		164' 1"	4 700	4 700	10 360		
48.0	157' 6"	5 000	5 000	11 020	50.5	165' 8"	4 600	4 600	10 140				
49.9	163' 9"	4 700	4 700	10 360									

Continued on next page

Tower length	Jib length	Working radius		Rated load			Tower length	Jib length	Working radius		Rated load						
				JIS rating	PCSA rating						JIS rating	PCSA rating					
m(ft in)	m(ft in)	m	ft in	kg	kg	lb	m(ft in)	m(ft in)	m	ft in	kg	kg	lb				
48.0 (157'6")	43.0 (141'1")	33.3	109' 3"	8 900	8 900	19 620	51.0 (167'4")	40.0 (131'3")	32.5	106' 8"	9 200	9 200	20 280				
		34.0	111' 7"	8 700	8 700	19 180			34.0	111' 7"	8 700	8 700	19 180				
		36.0	118' 1"	8 000	8 000	17 630			36.0	118' 1"	8 000	8 000	17 630				
		38.0	124' 8"	7 400	7 400	16 310			38.0	124' 8"	7 400	7 400	16 310				
		40.0	131' 3"	6 800	6 800	14 990			40.0	131' 3"	6 800	6 800	14 990				
		42.0	137'10"	6 300	6 300	13 880			42.0	137'10"	6 300	6 300	13 880				
		44.0	144' 4"	5 900	5 900	13 000			44.0	144' 4"	5 900	5 900	13 000				
		46.0	150'11"	5 400	5 400	11 900			46.0	150'11"	5 400	5 400	11 900				
		48.0	157' 6"	5 000	5 000	11 000			48.0	157' 6"	5 000	5 000	11 020				
		50.0	164' 1"	4 700	4 700	10 360			50.0	164' 1"	4 700	4 700	10 360				
52.0	170' 7"	4 400	4 400	9 700	51.0	167' 4"	4 600	4 600	10 140								
51.0 (167'4")	28.0 (91'10")	26.7	87' 7"	12 100	12 100	26 670	51.0 (167'4")	43.0 (141'1")	33.9	111' 3"	8 700	8 700	19 180				
		28.0	91'10"	11 300	11 300	24 910			34.0	111' 7"	8 700	8 700	19 180				
		30.0	98' 5"	10 200	10 200	22 480			36.0	118' 1"	8 000	8 000	17 630				
		32.0	105' 0"	9 400	9 400	20 720			38.0	124' 8"	7 400	7 400	16 310				
		34.0	111' 7"	8 700	8 700	19 180			40.0	131' 3"	6 800	6 800	14 990				
		36.0	118' 1"	8 000	8 000	17 630			42.0	137'10"	6 300	6 300	13 880				
		38.0	124' 8"	7 400	7 400	16 310			44.0	144' 4"	5 900	5 900	13 000				
		39.4	129' 3"	7 000	7 000	15 430			46.0	150'11"	5 400	5 400	11 900				
		51.0 (167'4")	31.0 (101'8")	28.2	92' 6"	11 200			11 200	24 690	51.0 (167'4")	46.0 (150'11")	35.3	115'10"	8 200	8 200	18 070
				30.0	98' 5"	10 200			10 200	22 480			36.0	118' 1"	8 000	8 000	17 630
32.0	105' 0"			9 400	9 400	20 720	38.0	124' 8"	7 400	7 400			16 310				
34.0	111' 7"			8 700	8 700	19 180	40.0	131' 3"	6 800	6 800			14 990				
36.0	118' 1"			8 000	8 000	17 630	42.0	137'10"	6 300	6 300			13 880				
38.0	124' 8"			7 400	7 400	16 310	44.0	144' 4"	5 900	5 900			13 000				
40.0	131' 3"			6 800	6 800	14 990	46.0	150'11"	5 400	5 400			11 900				
42.0	137'10"			6 300	6 300	13 880	48.0	157' 6"	5 000	5 000			11 020				
42.3	138' 9"			6 200	6 200	13 660	50.0	164' 1"	4 700	4 700			10 360				
51.0 (167'4")	34.0 (111'7")			29.6	97' 1"	10 400	10 400	22 920	51.0 (167'4")	46.0 (150'11")			52.0	170' 7"	4 400	4 400	9 700
		30.0	98' 5"	10 200	10 200	22 480	54.0	177' 2"			4 100	4 100	9 030				
		32.0	105' 0"	9 400	9 400	20 720	56.0	183' 9"			3 800	3 800	8 370				
		34.0	111' 7"	8 700	8 700	19 180	56.8	186' 4"			3 700	3 700	8 150				
		36.0	118' 1"	8 000	8 000	17 630											
		38.0	124' 8"	7 400	7 400	16 310											
		40.0	131' 3"	6 800	6 800	14 990											
		42.0	137'10"	6 300	6 300	13 880											
		44.0	144' 4"	5 900	5 900	13 000											
		45.2	148' 4"	5 600	5 600	12 340											
51.0 (167'4")	37.0 (121'5")	31.0	101' 8"	9 800	9 800	21 600											
		32.0	105' 0"	9 400	9 400	20 720											
		34.0	111' 7"	8 700	8 700	19 180											
		36.0	118' 1"	8 000	8 000	17 630											
		38.0	124' 8"	7 400	7 400	16 310											
		40.0	131' 3"	6 800	6 800	14 990											
		42.0	137'10"	6 300	6 300	13 880											
		44.0	144' 4"	5 900	5 900	13 000											
		46.0	150'11"	5 400	5 400	11 900											
		48.0	157' 6"	5 000	5 000	11 020											
48.1	157'10"	5 000	5 000	11 020													

Tower length	Jib length	Working radius		Rated load			Tower length	Jib length	Working radius		Rated load		
				JIS rating	PCSA rating						JIS rating	PCSA rating	
m(ft in)	m(ft in)	m	ft in	kg	kg	lb	m(ft in)	m(ft in)	m	ft in	kg	kg	lb
54.0 (177'2")	28.0 (91'10")	27.3	89' 7"	11 700	11 700	25 790	54.0 (177'2")	43.0 (141'1")	34.5	113' 2"	8 500	8 500	18 730
		28.0	91' 10"	11 300	11 300	24 910			36.0	118' 1"	8 000	8 000	17 630
		30.0	98' 5"	10 200	10 200	22 480			38.0	124' 8"	7 400	7 400	16 310
		32.0	105' 0"	9 400	9 400	20 720			40.0	131' 3"	6 800	6 800	14 990
		34.0	111' 7"	8 700	8 700	19 180			42.0	137' 10"	6 300	6 300	13 880
		36.0	118' 1"	8 000	8 000	17 630			44.0	144' 4"	5 900	5 900	13 000
		38.0	124' 8"	7 400	7 400	16 310			46.0	150' 11"	5 400	5 400	11 900
		39.9	130' 11"	6 800	6 800	14 990			48.0	157' 6"	5 000	5 000	11 020
	31.0 (101'8")	28.7	94' 2"	10 900	10 900	24 030		50.0	164' 1"	4 700	4 700	10 360	
		30.0	98' 5"	10 200	10 200	22 480		52.0	170' 7"	4 400	4 400	9 700	
		32.0	105' 0"	9 400	9 400	20 720		54.0	177' 2"	4 100	4 100	9 030	
		34.0	111' 7"	8 700	8 700	19 180		54.4	178' 6"	4 000	4 000	8 810	
		36.0	118' 1"	8 000	8 000	17 630		46.0 (150'11")	35.9	117' 9"	8 000	8 000	17 630
		38.0	124' 8"	7 400	7 400	16 310			36.0	118' 1"	8 000	8 000	17 630
		40.0	131' 3"	6 800	6 800	14 990			38.0	124' 8"	7 400	7 400	16 310
		42.0	137' 10"	6 300	6 300	13 880			40.0	131' 3"	6 800	6 800	14 990
	42.8	140' 5"	6 100	6 100	13 440	42.0			137' 10"	6 300	6 300	13 880	
	34.0 (111'7")	30.2	99' 1"	10 100	10 100	22 260			44.0	144' 4"	5 900	5 900	13 000
		32.0	105' 0"	9 400	9 400	20 720			46.0	150' 11"	5 400	5 400	11 900
		34.0	111' 7"	8 700	8 700	19 180			48.0	157' 6"	5 000	5 000	11 020
		36.0	118' 1"	8 000	8 000	17 630		50.0	164' 1"	4 700	4 700	10 360	
		38.0	124' 8"	7 400	7 400	16 310		52.0	170' 7"	4 400	4 400	9 700	
		40.0	131' 3"	6 800	6 800	14 990		54.0	177' 2"	4 100	4 100	9 030	
		42.0	137' 10"	6 300	6 300	13 880		56.0	183' 9"	3 800	3 800	8 370	
		44.0	144' 4"	5 900	5 900	13 000		57.3	188' 0"	3 600	3 600	7 930	
	37.0 (121'5")	31.6	103' 8"	9 600	9 600	21 160		49.0 (160'9")	37.3	122' 5"	7 400	7 400	16 310
		32.0	105' 0"	9 400	9 400	20 720			38.0	124' 8"	7 200	7 200	15 870
		34.0	111' 7"	8 700	8 700	19 180			40.0	131' 3"	6 700	6 700	14 770
		36.0	118' 1"	8 000	8 000	17 630			42.0	137' 10"	6 300	6 300	13 880
		38.0	124' 8"	7 400	7 400	16 310			44.0	144' 4"	5 800	5 800	12 780
		40.0	131' 3"	6 800	6 800	14 990			46.0	150' 11"	5 300	5 300	11 680
		42.0	137' 10"	6 300	6 300	13 880			48.0	157' 6"	4 700	4 700	10 360
		44.0	144' 4"	5 900	5 900	13 000			50.0	164' 1"	4 400	4 400	9 700
		46.0	150' 11"	5 400	5 400	11 900			52.0	170' 7"	4 100	4 100	9 030
		48.0	157' 6"	5 000	5 000	11 020			54.0	177' 2"	3 800	3 800	8 370
	48.6	159' 5"	4 900	4 900	10 800	56.0		183' 9"	3 500	3 500	7 710		
	40.0 (131'3")	33.0	108' 3"	9 000	9 000	19 840		58.0	190' 3"	3 200	3 200	7 050	
		34.0	111' 7"	8 700	8 700	19 180		60.0	196' 10"	3 000	3 000	6 610	
		36.0	118' 1"	8 000	8 000	17 630		60.2	197' 6"	3 000	3 000	6 610	
		38.0	124' 8"	7 400	7 400	16 310							
		40.0	131' 3"	6 800	6 800	14 990							
		42.0	137' 10"	6 300	6 300	13 880							
		44.0	144' 4"	5 900	5 900	13 000							
		46.0	150' 11"	5 400	5 400	11 900							
		48.0	157' 6"	5 000	5 000	11 020							
		50.0	164' 1"	4 700	4 700	10 360							
	51.5	169' 0"	4 500	4 500	9 920								

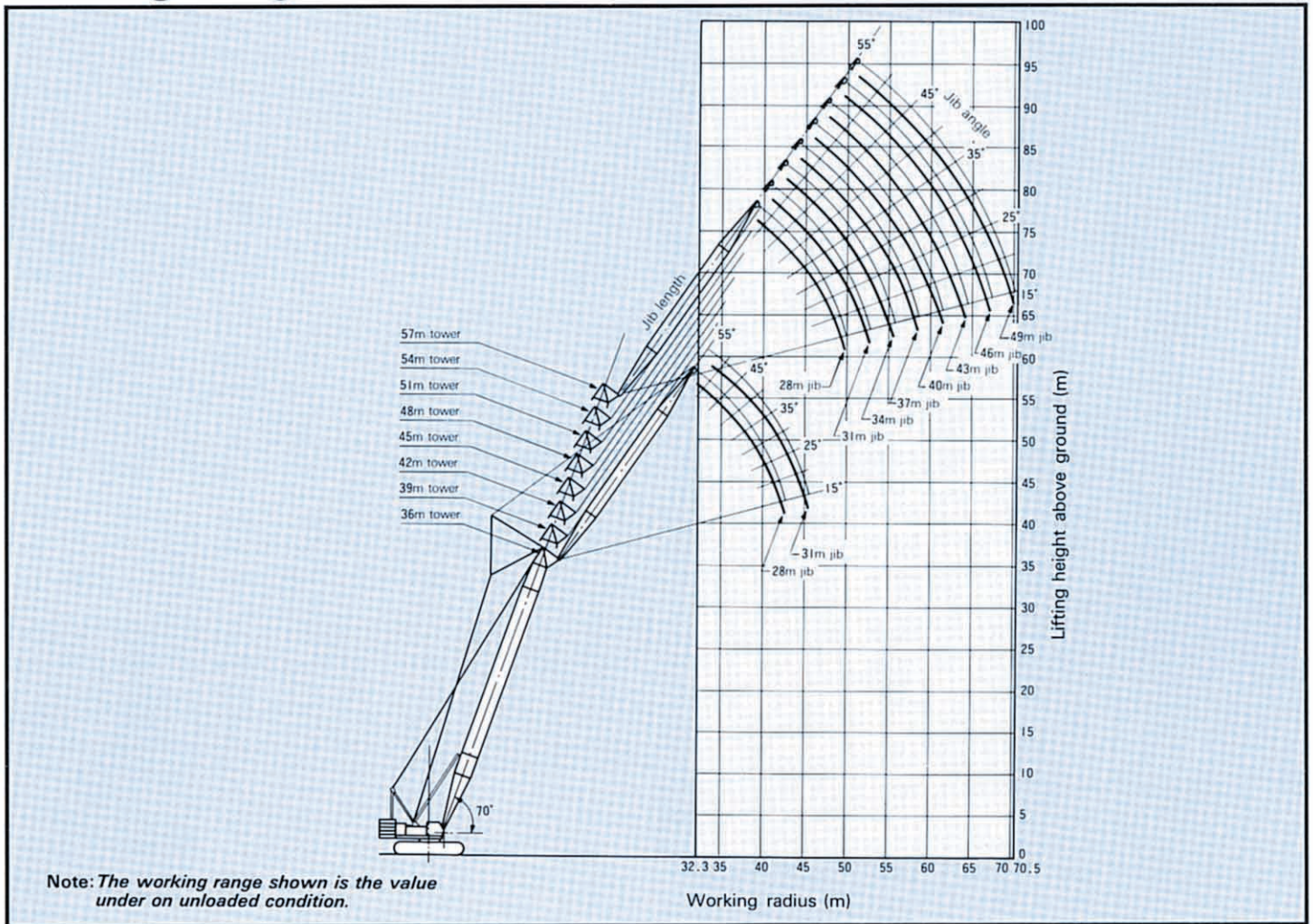
Continued on next page

Tower length	Jib length	Working radius		Rated load			Tower length	Jib length	Working radius		Rated load			
				JIS rating	PCSA rating						JIS rating	PCSA rating		
m(ft in)	m(ft in)	m	ft in	kg	kg	lb	m(ft in)	m(ft in)	m	ft in	kg	kg	lb	
57.0 (187'0")	28.0 (91'10")	27.9	91' 6"	11 400	11 400	25 130	57.0 (187'0")	43.0 (141'1")	35.0	114' 10"	8 300	8 300	18 290	
		28.0	91' 10"	11 300	11 300	24 910			36.0	118' 1"	8 000	8 000	17 630	
		30.0	98' 5"	10 200	10 200	22 480			38.0	124' 8"	7 400	7 400	16 310	
		32.0	105' 0"	9 400	9 400	20 720			40.0	131' 3"	6 800	6 800	14 990	
		34.0	111' 7"	8 700	8 700	19 180			42.0	137' 10"	6 300	6 300	13 880	
		36.0	118' 1"	8 000	8 000	17 630			44.0	144' 4"	5 900	5 900	13 000	
		38.0	124' 8"	7 400	7 400	16 310			46.0	150' 11"	5 400	5 400	11 900	
		40.0	131' 3"	6 800	6 800	14 990			48.0	157' 6"	5 000	5 000	11 020	
	40.4	132' 7"	6 700	6 700	14 770	50.0			164' 1"	4 700	4 700	10 360		
	31.0 (101'8")	29.3	96' 2"	10 600	10 600	23 360			52.0	170' 7"	4 400	4 400	9 700	
		30.0	98' 5"	10 200	10 200	22 480			54.0	177' 2"	4 100	4 100	9 030	
		32.0	105' 0"	9 400	9 400	20 720			54.9	180' 1"	4 000	4 000	8 810	
		34.0	111' 7"	8 700	8 700	19 180			46.0 (150'11")	36.5	119' 9"	7 900	7 900	17 410
		36.0	118' 1"	8 000	8 000	17 630				38.0	124' 8"	7 400	7 400	16 310
		38.0	124' 8"	7 400	7 400	16 310				40.0	131' 3"	6 800	6 800	14 990
		40.0	131' 3"	6 800	6 800	14 990				42.0	137' 10"	6 300	6 300	13 880
		42.0	137' 10"	6 300	6 300	13 880		44.0		144' 4"	5 900	5 900	13 000	
	43.3	142' 1"	6 000	6 000	13 220	46.0		150' 11"		5 400	5 400	11 900		
	34.0 (111'7")	30.8	101' 1"	9 900	9 900	21 820		48.0		157' 6"	5 000	5 000	11 020	
		32.0	105' 0"	9 400	9 400	20 720		50.0		164' 1"	4 700	4 700	10 360	
		34.0	111' 7"	8 700	8 700	19 180		52.0	170' 7"	4 400	4 400	9 700		
		36.0	118' 1"	8 000	8 000	17 630		54.0	177' 2"	4 100	4 100	9 030		
		38.0	124' 8"	7 400	7 400	16 310		56.0	183' 9"	3 800	3 800	8 370		
		40.0	131' 3"	6 800	6 800	14 990		57.8	189' 8"	3 500	3 500	7 710		
		42.0	137' 10"	6 300	6 300	13 880		49.0 (160'9")	37.9	124' 4"	7 200	7 200	15 870	
		44.0	144' 4"	5 900	5 900	13 000			38.0	124' 8"	7 200	7 200	15 870	
	46.0	150' 11"	5 400	5 400	11 900	40.0			131' 3"	6 700	6 700	14 770		
	46.2	151' 7"	5 400	5 400	11 900	42.0			137' 10"	6 300	6 300	13 880		
	37.0 (121'5")	32.2	105' 8"	9 300	9 300	20 500			44.0	144' 4"	5 800	5 800	12 780	
		34.0	111' 7"	8 700	8 700	19 180			46.0	150' 11"	5 300	5 300	11 680	
		36.0	118' 1"	8 000	8 000	17 630			48.0	157' 6"	4 700	4 700	10 360	
		38.0	124' 8"	7 400	7 400	16 310			50.0	164' 1"	4 400	4 400	9 700	
		40.0	131' 3"	6 800	6 800	14 990		52.0	170' 7"	4 100	4 100	9 030		
		42.0	137' 10"	6 300	6 300	13 880		54.0	177' 2"	3 800	3 800	8 370		
		44.0	144' 4"	5 900	5 900	13 000		56.0	183' 9"	3 500	3 500	7 710		
		46.0	150' 11"	5 400	5 400	11 900		58.0	190' 3"	3 200	3 200	7 050		
	48.0	157' 6"	5 000	5 000	11 020	60.0		196' 10"	3 000	3 000	6 610			
	49.1	161' 1"	4 800	4 800	10 580	60.7		199' 2"	2 900	2 900	6 390			
	40.0 (131'3")	33.6	110' 3"	8 800	8 800	19 400		<b>Notes:</b> 1.The rated loads shown are based on the machine on firm, level ground. 2.The rated loads shown include the weights of all lifting attachments such as a hook. The load to be actually lifted is the rated load minus the weights of all lifting attachments. 3.The rated loads shown are limited by structural strength of the machine. 4.Counterweight is 57 700 kg(127 200 lb). 5.In operation, crawlers must be extended.						
		34.0	111' 7"	8 700	8 700	19 180								
		36.0	118' 1"	8 000	8 000	17 630								
		38.0	124' 8"	7 400	7 400	16 310								
		40.0	131' 3"	6 800	6 800	14 990								
		42.0	137' 10"	6 300	6 300	13 880								
		44.0	144' 4"	5 900	5 900	13 000								
		46.0	150' 11"	5 400	5 400	11 900								
	48.0	157' 6"	5 000	5 000	11 020									
	50.0	164' 1"	4 700	4 700	10 360									
52.0	170' 7"	4 400	4 400	9 700										

**Notes:**

- 1.The rated loads shown are based on the machine on firm, level ground.
- 2.The rated loads shown include the weights of all lifting attachments such as a hook. The load to be actually lifted is the rated load minus the weights of all lifting attachments.
- 3.The rated loads shown are limited by structural strength of the machine.
- 4.Counterweight is 57 700 kg(127 200 lb).
- 5.In operation, crawlers must be extended.

# Working Ranges (70° Tower Angle)



# Rated Loads (70° Tower Angle)

Tower length	Jib length	Working radius		Rated load			Tower length	Jib length	Working radius		Rated load		
				JIS rating	PCSA rating						JIS rating	PCSA rating	
m(ft in)	m(ft in)	m	ft in	kg	kg	lb	m(ft in)	m(ft in)	m	ft in	kg	kg	lb
36.0 (118'1")	28.0 (91'10")	32.0	105' 0"	8 500	8 500	18 730	42.0 (137'10")	28.0 (91'10")	34.0	111' 7"	7 900	7 900	17 410
		34.0	111' 7"	7 900	7 900	17 410			36.0	118' 1"	7 400	7 400	16 310
		36.0	118' 1"	7 400	7 400	16 310			38.0	124' 8"	6 900	6 900	15 210
		38.0	124' 8"	6 900	6 900	15 210			40.0	131' 3"	6 500	6 500	14 330
		40.0	131' 3"	6 500	6 500	14 330			42.0	137' 10"	6 100	6 100	13 440
		42.0	137' 10"	6 100	6 100	13 440			44.0	144' 4"	5 800	5 800	12 780
		42.7	140' 1"	6 000	6 000	13 220			44.8	147' 0"	5 700	5 700	12 560
	31.0 (101'8")	33.7	110' 7"	7 800	7 800	17 190		31.0 (101'8")	35.7	117' 2"	7 300	7 300	16 090
		34.0	111' 7"	7 700	7 700	16 970			36.0	118' 1"	7 200	7 200	15 870
		36.0	118' 1"	7 200	7 200	15 870			38.0	124' 8"	6 700	6 700	14 770
		38.0	124' 8"	6 700	6 700	14 770			40.0	131' 3"	6 300	6 300	13 880
		40.0	131' 3"	6 300	6 300	13 880			42.0	137' 10"	5 900	5 900	13 000
		42.0	137' 10"	5 900	5 900	13 000			44.0	144' 4"	5 500	5 500	12 120
		44.0	144' 4"	5 500	5 500	12 120			46.0	150' 11"	5 200	5 200	11 460
45.6	149' 7"	5 200	5 200	11 460	47.7	156' 6"	4 900	4 900	10 800				
39.0 (127'11")	28.0 (91'10")	33.0	108' 3"	8 200	8 200	18 070	34.0 (111'7")	37.4	122' 8"	6 700	6 700	14 770	
		34.0	111' 7"	7 900	7 900	17 410		38.0	124' 8"	6 500	6 500	14 330	
		36.0	118' 1"	7 400	7 400	16 310		40.0	131' 3"	6 100	6 100	13 440	
		38.0	124' 8"	6 900	6 900	15 210		42.0	137' 10"	5 700	5 700	12 560	
		40.0	131' 3"	6 500	6 500	14 330		44.0	144' 4"	5 400	5 400	11 900	
		42.0	137' 10"	6 100	6 100	13 440		46.0	150' 11"	5 200	5 200	11 460	
		43.7	143' 4"	5 800	5 800	12 780		48.0	157' 6"	4 900	4 900	10 800	
	31.0 (101'8")	34.7	113' 10"	7 500	7 500	16 530		37.0 (121'5")	50.0	164' 1"	4 600	4 600	10 140
		36.0	118' 1"	7 200	7 200	15 870			50.6	166' 0"	4 500	4 500	9 920
		38.0	124' 8"	6 700	6 700	14 770			39.1	128' 3"	6 200	6 200	13 660
		40.0	131' 3"	6 300	6 300	13 880			40.0	131' 3"	6 000	6 000	13 220
		42.0	137' 10"	5 900	5 900	13 000			42.0	137' 10"	5 600	5 600	12 340
		44.0	144' 4"	5 500	5 500	12 120			44.0	144' 4"	5 300	5 300	11 680
		46.0	150' 11"	5 200	5 200	11 460			46.0	150' 11"	5 100	5 100	11 240
	46.6	152' 11"	5 100	5 100	11 240	48.0		157' 6"	4 800	4 800	10 580		
	34.0 (111'7")	36.4	119' 5"	6 900	6 900	15 210		50.0	164' 1"	4 500	4 500	9 920	
		38.0	124' 8"	6 500	6 500	14 330		52.0	170' 7"	4 100	4 100	9 030	
		40.0	131' 3"	6 100	6 100	13 440		53.5	175' 6"	3 900	3 900	8 590	
42.0		137' 10"	5 700	5 700	12 560								
44.0		144' 4"	5 400	5 400	11 900								
46.0		150' 11"	5 200	5 200	11 460								
48.0		157' 6"	4 900	4 900	10 800								
49.5	162' 5"	4 700	4 700	10 360									

Tower length	Jib length	Working radius		Rated load			Tower length	Jib length	Working radius		Rated load		
				JIS rating	PCSA rating						JIS rating	PCSA rating	
m(ft in)	m(ft in)	m	ft in	kg	kg	lb	m(ft in)	m(ft in)	m	ft in	kg	kg	lb
45.0 (147'8")	28.0 (91'10")	35.0	114' 10"	7 700	7 700	16 970	48.0 (157'6")	28.0 (91'10")	36.1	118' 5"	7 400	7 400	16 310
		36.0	118' 1"	7 400	7 400	16 310			38.0	124' 8"	6 900	6 900	15 210
		38.0	124' 8"	6 900	6 900	15 210			40.0	131' 3"	6 500	6 500	14 330
		40.0	131' 3"	6 500	6 500	14 330			42.0	137' 10"	6 100	6 100	13 440
		42.0	137' 10"	6 100	6 100	13 440			44.0	144' 4"	5 800	5 800	12 780
		44.0	144' 4"	5 800	5 800	12 780			46.0	150' 11"	5 400	5 400	11 900
		45.8	150' 3"	5 500	5 500	12 120			46.8	153' 7"	5 200	5 200	11 460
	31.0 (101'8")	36.8	120' 9"	6 900	6 900	15 210		31.0 (101'8")	37.8	124' 0"	6 700	6 700	14 770
		38.0	124' 8"	6 700	6 700	14 770			38.0	124' 8"	6 700	6 700	14 770
		40.0	131' 3"	6 300	6 300	13 880			40.0	131' 3"	6 300	6 300	13 880
		42.0	137' 10"	5 900	5 900	13 000			42.0	137' 10"	5 900	5 900	13 000
		44.0	144' 4"	5 500	5 500	12 120			44.0	144' 4"	5 500	5 500	12 120
		46.0	150' 11"	5 200	5 200	11 460			46.0	150' 11"	5 200	5 200	11 460
		48.0	157' 6"	4 900	4 900	10 800			48.0	157' 6"	4 900	4 900	10 800
	48.7	159' 9"	4 800	4 800	10 580	49.7		163' 1"	4 600	4 600	10 140		
	34.0 (111'7")	38.5	126' 4"	6 400	6 400	14 100		34.0 (111'7")	39.5	129' 7"	6 200	6 200	13 660
		40.0	131' 3"	6 100	6 100	13 440			40.0	131' 3"	6 100	6 100	13 440
		42.0	137' 10"	5 700	5 700	12 560			42.0	137' 10"	5 700	5 700	12 560
		44.0	144' 4"	5 400	5 400	11 900			44.0	144' 4"	5 400	5 400	11 900
		46.0	150' 11"	5 200	5 200	11 460			46.0	150' 11"	5 200	5 200	11 460
		48.0	157' 6"	4 900	4 900	10 800			48.0	157' 6"	4 900	4 900	10 800
		50.0	164' 1"	4 600	4 600	10 140			50.0	164' 1"	4 600	4 600	10 140
	51.6	169' 3"	4 400	4 400	9 700	52.0		170' 7"	4 200	4 200	9 250		
	37.0 (121'5")	40.2	131' 11"	5 900	5 900	13 000		37.0 (121'5")	41.2	135' 2"	5 700	5 700	12 560
		42.0	137' 10"	5 600	5 600	12 340			42.0	137' 10"	5 600	5 600	12 340
		44.0	144' 4"	5 300	5 300	11 680			44.0	144' 4"	5 300	5 300	11 680
		46.0	150' 11"	5 100	5 100	11 240			46.0	150' 11"	5 100	5 100	11 240
		48.0	157' 6"	4 800	4 800	10 580			48.0	157' 6"	4 800	4 800	10 580
		50.0	164' 1"	4 500	4 500	9 920			50.0	164' 1"	4 500	4 500	9 920
		52.0	170' 7"	4 100	4 100	9 030			52.0	170' 7"	4 100	4 100	9 030
	54.0	177' 2"	3 900	3 900	8 590	54.0		177' 2"	3 900	3 900	8 590		
	54.5	178' 10"	3 800	3 800	8 370	55.5		182' 1"	3 700	3 700	8 150		
	40.0 (131'3")	41.9	137' 6"	5 600	5 600	12 340		40.0 (131'3")	43.0	141' 1"	5 400	5 400	11 900
		42.0	137' 10"	5 600	5 600	12 340			44.0	144' 4"	5 300	5 300	11 680
		44.0	144' 4"	5 300	5 300	11 680			46.0	150' 11"	5 000	5 000	11 020
		46.0	150' 11"	5 000	5 000	11 020			48.0	157' 6"	4 700	4 700	10 360
		48.0	157' 6"	4 700	4 700	10 360			50.0	164' 1"	4 400	4 400	9 700
		50.0	164' 1"	4 400	4 400	9 700			52.0	170' 7"	4 000	4 000	8 810
		52.0	170' 7"	4 000	4 000	8 810			54.0	177' 2"	3 800	3 800	8 370
	54.0	177' 2"	3 800	3 800	8 370	56.0		183' 9"	3 600	3 600	7 930		
	56.0	183' 9"	3 600	3 600	7 930	58.0		190' 3"	3 400	3 400	7 490		
	57.4	188' 4"	3 500	3 500	7 710	58.4		191' 7"	3 400	3 400	7 490		
	43.0 (141'1")	44.7	146' 8"	4 900	4 900	10 800		43.0 (141'1")	46.0	150' 11"	4 700	4 700	10 360
		46.0	150' 11"	4 700	4 700	10 360			48.0	157' 6"	4 400	4 400	9 700
		48.0	157' 6"	4 400	4 400	9 700			50.0	164' 1"	4 200	4 200	9 250
		50.0	164' 1"	4 200	4 200	9 250			52.0	170' 7"	3 900	3 900	8 590
		52.0	170' 7"	3 900	3 900	8 590			54.0	177' 2"	3 700	3 700	8 150
		54.0	177' 2"	3 700	3 700	8 150			56.0	183' 9"	3 500	3 500	7 710
56.0		183' 9"	3 500	3 500	7 710	58.0	190' 3"		3 300	3 300	7 270		
60.0	196' 10"	3 000	3 000	6 610	61.3	201' 1"	2 800	2 800	6 170				

Continued on next page

Tower length	Jib length	Working radius		Rated load			Tower length	Jib length	Working radius		Rated load			
				JIS rating	PCSA rating						JIS rating	PCSA rating		
m(ft in)	m(ft in)	m	ft in	kg	kg	lb	m(ft in)	m(ft in)	m	ft in	kg	kg	lb	
51.0 (167'4")	28.0 (91'10")	37.1	121' 9"	7 100	7 100	15 650	51.0 (167'4")	43.0 (141'1")	45.7	149'11"	4 700	4 700	10 360	
		38.0	124' 8"	6 900	6 900	15 210			46.0	150'11"	4 700	4 700	10 360	
		40.0	131' 3"	6 500	6 500	14 330			48.0	157' 6"	4 400	4 400	9 700	
		42.0	137'10"	6 100	6 100	13 440			50.0	164' 1"	4 200	4 200	9 250	
		44.0	144' 4"	5 800	5 800	12 780			52.0	170' 7"	3 900	3 900	8 590	
		46.0	150'11"	5 400	5 400	11 900			54.0	177' 2"	3 700	3 700	8 150	
		47.8	156'10"	5 000	5 000	11 020			56.0	183' 9"	3 500	3 500	7 710	
	31.0 (101'8")	38.8	127' 4"	6 500	6 500	14 330			58.0	190' 3"	3 300	3 300	7 270	
		40.0	131' 3"	6 300	6 300	13 880			60.0	196'10"	3 000	3 000	6 610	
		42.0	137'10"	5 900	5 900	13 000			62.0	203' 5"	2 800	2 800	6 170	
		44.0	144' 4"	5 500	5 500	12 120			62.3	204' 5"	2 800	2 800	6 170	
		46.0	150'11"	5 200	5 200	11 460			46.0 (150'11")	47.4	155' 6"	4 300	4 300	9 470
		48.0	157' 6"	4 900	4 900	10 800				48.0	157' 6"	4 200	4 200	9 250
		50.0	164' 1"	4 600	4 600	10 140				50.0	164' 1"	3 900	3 900	8 590
	52.0	170' 7"	4 200	4 200	9 250	52.0	170' 7"	3 700		3 700	8 150			
	53.6	175'10"	4 000	4 000	8 810	54.0	177' 2"	3 500		3 500	7 710			
	40.5	132'10"	5 800	5 800	12 780	56.0	183' 9"	3 400		3 400	7 490			
	42.0	137'10"	5 700	5 700	12 560	58.0	190' 3"	3 200		3 200	7 050			
	34.0 (111'7")	44.0	144' 4"	5 400	5 400	11 900	60.0	196'10"	2 900	2 900	6 390			
		46.0	150'11"	5 200	5 200	11 460	62.0	203' 5"	2 700	2 700	5 950			
		48.0	157' 6"	4 900	4 900	10 800	64.0	210' 0"	2 500	2 500	5 510			
		50.0	164' 1"	4 600	4 600	10 140	65.2	213'11"	2 400	2 400	5 290			
		52.0	170' 7"	4 200	4 200	9 250	28.0 (91'10")	38.1	125' 0"	6 800	6 800	14 990		
		53.6	175'10"	4 000	4 000	8 810		40.0	131' 3"	6 500	6 500	14 330		
		42.3	138' 9"	5 500	5 500	12 120		42.0	137'10"	6 100	6 100	13 440		
	44.0	144' 4"	5 300	5 300	11 680	44.0		144' 4"	5 800	5 800	12 780			
	46.0	150'11"	5 100	5 100	11 240	46.0		150'11"	5 400	5 400	11 900			
	48.0	157' 6"	4 800	4 800	10 580	48.0		157' 6"	5 000	5 000	11 020			
	50.0	164' 1"	4 500	4 500	9 920	48.9		160' 5"	4 800	4 800	10 580			
	37.0 (121'5")	52.0	170' 7"	4 100	4 100	9 030	54.0 (177'2")	31.0 (101'8")	39.8	130' 7"	6 300	6 300	13 880	
		54.0	177' 2"	3 900	3 900	8 590			40.0	131' 3"	6 300	6 300	13 880	
		56.0	183' 9"	3 700	3 700	8 150			42.0	137'10"	5 900	5 900	13 000	
		56.5	185' 4"	3 600	3 600	7 930			44.0	144' 4"	5 500	5 500	12 120	
		44.0	144' 4"	5 300	5 300	11 680			46.0	150'11"	5 200	5 200	11 460	
		46.0	150'11"	5 000	5 000	11 020			48.0	157' 6"	4 900	4 900	10 800	
		48.0	157' 6"	4 700	4 700	10 360			50.0	164' 1"	4 600	4 600	10 140	
	40.0 (131'3")	50.0	164' 1"	4 400	4 400	9 700	51.8	169'11"	4 300	4 300	9 470			
		52.0	170' 7"	4 000	4 000	8 810	34.0 (111'7")	41.6	136' 6"	5 700	5 700	12 560		
		54.0	177' 2"	3 800	3 800	8 370		42.0	137'10"	5 700	5 700	12 560		
		56.0	183' 9"	3 600	3 600	7 930		44.0	144' 4"	5 400	5 400	11 900		
		58.0	190' 3"	3 400	3 400	7 490		46.0	150'11"	5 200	5 200	11 460		
		59.4	194'11"	3 300	3 300	7 270		48.0	157' 6"	4 900	4 900	10 800		
						50.0		164' 1"	4 600	4 600	10 140			
					52.0	170' 7"		4 200	4 200	9 250				
					54.0	177' 2"	4 000	4 000	8 810					
					54.7	179' 6"	3 900	3 900	8 590					



Tower length	Jib length	Working radius		Rated load			Tower length	Jib length	Workink radius		Rated load			
				JIS rating	PCSA rating						JIS rating	PCSA rating		
m(ft in)	m(ft in)	m	ft in	kg	kg	lb	m(ft in)	m(ft in)	m	ft in	kg	kg	lb	
<b>54.0</b> <b>(177'2")</b>	<b>37.0</b> <b>(121'5")</b>	43.3	142' 1"	5 300	5 300	11 680	<b>57.0</b> <b>(187'0")</b>	<b>28.0</b> <b>(91'10")</b>	39.1	128' 3"	6 600	6 600	14 550	
		44.0	144' 4"	5 300	5 300	11 680			40.0	131' 3"	6 500	6 500	14 330	
		46.0	150'11"	5 100	5 100	11 240			42.0	137'10"	6 100	6 100	13 440	
		48.0	157' 6"	4 800	4 800	10 580			44.0	144' 4"	5 800	5 800	12 780	
		50.0	164' 1"	4 500	4 500	9 920			46.0	150'11"	5 400	5 400	11 900	
		52.0	170' 7"	4 100	4 100	9 030			48.0	157' 6"	5 000	5 000	11 020	
		54.0	177' 2"	3 900	3 900	8 590			49.9	163' 9"	4 600	4 600	10 140	
		56.0	183' 9"	3 700	3 700	8 150			<b>31.0</b> <b>(101'8")</b>	40.9	134' 2"	6 100	6 100	13 440
		57.6	188'12"	3 500	3 500	7 710				42.0	137'10"	5 900	5 900	13 000
	<b>40.0</b> <b>(131'3")</b>	45.0	147' 8"	5 100	5 100	11 240		44.0		144' 4"	5 500	5 500	12 120	
		46.0	150'11"	5 000	5 000	11 020		46.0		150'11"	5 200	5 200	11 460	
		48.0	157' 6"	4 700	4 700	10 360		48.0		157' 6"	4 900	4 900	10 800	
		50.0	164' 1"	4 400	4 400	9 700		50.0		164' 1"	4 600	4 600	10 140	
		52.0	170' 7"	4 000	4 000	8 810		52.0		170' 7"	4 200	4 200	9 250	
		54.0	177' 2"	3 800	3 800	8 370		52.8		173' 3"	4 100	4 100	9 030	
		56.0	183' 9"	3 600	3 600	7 930		<b>34.0</b> <b>(111'7")</b>		42.6	139' 9"	5 600	5 600	12 340
		58.0	190' 3"	3 400	3 400	7 490			44.0	144' 4"	5 400	5 400	11 900	
		60.0	196'10"	3 200	3 200	7 050			46.0	150'11"	5 200	5 200	11 460	
	60.5	198' 6"	3 100	3 100	6 830	48.0			157' 6"	4 900	4 900	10 800		
	<b>43.0</b> <b>(141'1")</b>	46.7	153' 3"	4 500	4 500	9 920			50.0	164' 1"	4 600	4 600	10 140	
		48.0	157' 6"	4 400	4 400	9 700			52.0	170' 7"	4 200	4 200	9 250	
		50.0	164' 1"	4 200	4 200	9 250			54.0	177' 2"	4 000	4 000	8 810	
		52.0	170' 7"	3 900	3 900	8 590			55.7	182' 9"	3 800	3 800	8 370	
		54.0	177' 2"	3 700	3 700	8 150			<b>37.0</b> <b>(121'5")</b>	44.3	145' 4"	5 300	5 300	11 680
		56.0	183' 9"	3 500	3 500	7 710		46.0		150'11"	5 100	5 100	11 240	
		58.0	190' 3"	3 300	3 300	7 270		48.0		157' 6"	4 800	4 800	10 580	
		60.0	196'10"	3 000	3 000	6 610		50.0		164' 1"	4 500	4 500	9 920	
		62.0	203' 5"	2 800	2 800	6 170		52.0		170' 7"	4 100	4 100	9 030	
	63.4	208' 0"	2 700	2 700	5 950	54.0		177' 2"		3 900	3 900	8 590		
	<b>46.0</b> <b>(150'11")</b>	48.4	158'10"	4 000	4 000	8 810		56.0		183' 9"	3 700	3 700	8 150	
		50.0	164' 1"	3 900	3 900	8 590		58.0		190' 3"	3 500	3 500	7 710	
		52.0	170' 7"	3 700	3 700	8 150		58.6		192' 3"	3 400	3 400	7 490	
		54.0	177' 2"	3 500	3 500	7 710		<b>40.0</b> <b>(131'3")</b>	46.0	150'11"	5 000	5 000	11 020	
		56.0	183' 9"	3 400	3 400	7 490			48.0	157' 6"	4 700	4 700	10 360	
		58.0	190' 3"	3 200	3 200	7 050			50.0	164' 1"	4 400	4 400	9 700	
		60.0	196'10"	2 900	2 900	6 390			52.0	170' 7"	4 000	4 000	8 810	
		62.0	203' 5"	2 700	2 700	5 950			54.0	177' 2"	3 800	3 800	8 370	
		64.0	210' 0"	2 500	2 500	5 510			56.0	183' 9"	3 600	3 600	7 930	
	66.0	216' 6"	2 400	2 400	5 290	58.0			190' 3"	3 400	3 400	7 490		
	66.3	217' 6"	2 400	2 400	5 290	60.0			196'10"	3 200	3 200	7 050		
	<b>49.0</b> <b>(160'9")</b>	50.2	164' 8"	3 500	3 500	7 710			61.5	201' 9"	3 000	3 000	6 610	
		52.0	170' 7"	3 400	3 400	7 490		<b>43.0</b> <b>(141'1")</b>	47.7	156' 6"	4 400	4 400	9 700	
		54.0	177' 2"	3 300	3 300	7 270			48.0	157' 6"	4 400	4 400	9 700	
		56.0	183' 9"	3 100	3 100	6 830			50.0	164' 1"	4 200	4 200	9 250	
		58.0	190' 3"	2 900	2 900	6 390			52.0	170' 7"	3 900	3 900	8 590	
		60.0	196'10"	2 800	2 800	6 170			54.0	177' 2"	3 700	3 700	8 150	
		62.0	203' 5"	2 600	2 600	5 730			56.0	183' 9"	3 500	3 500	7 710	
		64.0	210' 0"	2 400	2 400	5 290			58.0	190' 3"	3 300	3 300	7 270	
66.0		216' 6"	2 300	2 300	5 070	60.0	196'10"		3 000	3 000	6 610			
68.0		223' 1"	2 200	2 200	4 850	62.0	203' 5"		2 800	2 800	6 170			
69.1		226' 8"	2 100	2 100	4 620	64.0	210' 0"		2 700	2 700	5 950			
						64.4	211' 3"		2 600	2 600	5 730			

Continued on next page

Tower length	Jib length	Working radius		Rated load		
				JIS rating	PCSA rating	
m(ft in)	m(ft in)	m	ft in	kg	kg	lb
57.0 (187'0")	46.0 (150'11")	49.5	162' 5"	3 900	3 900	8 590
		50.0	164' 1"	3 900	3 900	8 590
		52.0	170' 7"	3 700	3 700	8 150
		54.0	177' 2"	3 500	3 500	7 710
		56.0	183' 9"	3 400	3 400	7 490
		58.0	190' 3"	3 200	3 200	7 050
		60.0	196' 10"	2 900	2 900	6 390
		62.0	203' 5"	2 700	2 700	5 950
		64.0	210' 0"	2 500	2 500	5 510
		66.0	216' 6"	2 400	2 400	5 290
	67.3	220' 10"	2 300	2 300	5 070	
	49.0 (160'9")	51.2	168' 0"	3 500	3 500	7 710
		52.0	170' 7"	3 400	3 400	7 490
		54.0	177' 2"	3 300	3 300	7 270
		56.0	183' 9"	3 100	3 100	6 830
		58.0	190' 3"	2 900	2 900	6 390
		60.0	196' 10"	2 800	2 800	6 170
		62.0	203' 5"	2 600	2 600	5 730
		64.0	210' 0"	2 400	2 400	5 290
		66.0	216' 6"	2 300	2 300	5 070
68.0		223' 1"	2 200	2 200	4 850	
70.0	229' 8"	2 000	2 000	4 400		
70.2	230' 4"	2 000	2 000	4 400		

**Notes:**

- 1.The rated loads shown are based on the machine on firm, level ground.
- 2.The rated loads shown include the weights of all lifting attachments such as a hook. The load to be actually lifted is the rated load minus the weights of all lifting attachments.
- 3.The rated loads shown are limited by structural strength of the machine.
- 4.Counterweight is 57 700 kg(127 200 lb).
- 5.In operation, crawlers must be extended.

# Tower & Jib Construction

## Tower Construction

Tower length	36.0 m (118'1")	39.0 m (127'11")	42.0 m (137'10")	45.0 m (147'8")	48.0 m (157'6")	51.0 m (167'4")	54.0 m (177'2")	57.0 m (187'0")
Element								
Lower tower 7.5 m(24'7")	1	1	1	1	1	1	1	1
Upper tower (1.5 m+3 m) ((4'11")+(9'10"))	1	1	1	1	1	1	1	1
Insert 3 m(A)(9'10")	—	1	1	—	—	1	—	1
Insert 3 m(B)(9'10")	1	1	1	1	1	1	1	1
Insert 6 m(19'8")	2	2	1	2	1	1	2	2
Insert 9 m(29'6")	1	1	2	2	3	3	3	3
Available Jib	← Jib length 28 m(91'10") →							
	← Jib length 31 m(101'8") →							
	← Jib length 34 m(111'7") →							
	← Jib length 37 m(121'5") →							
	← Jib length 40 m(131'3") →							
	← Jib length 43 m(141'1") →							
	← Jib length 46 m(150'11") →							
	← Jib length 49 m(160'9") →							

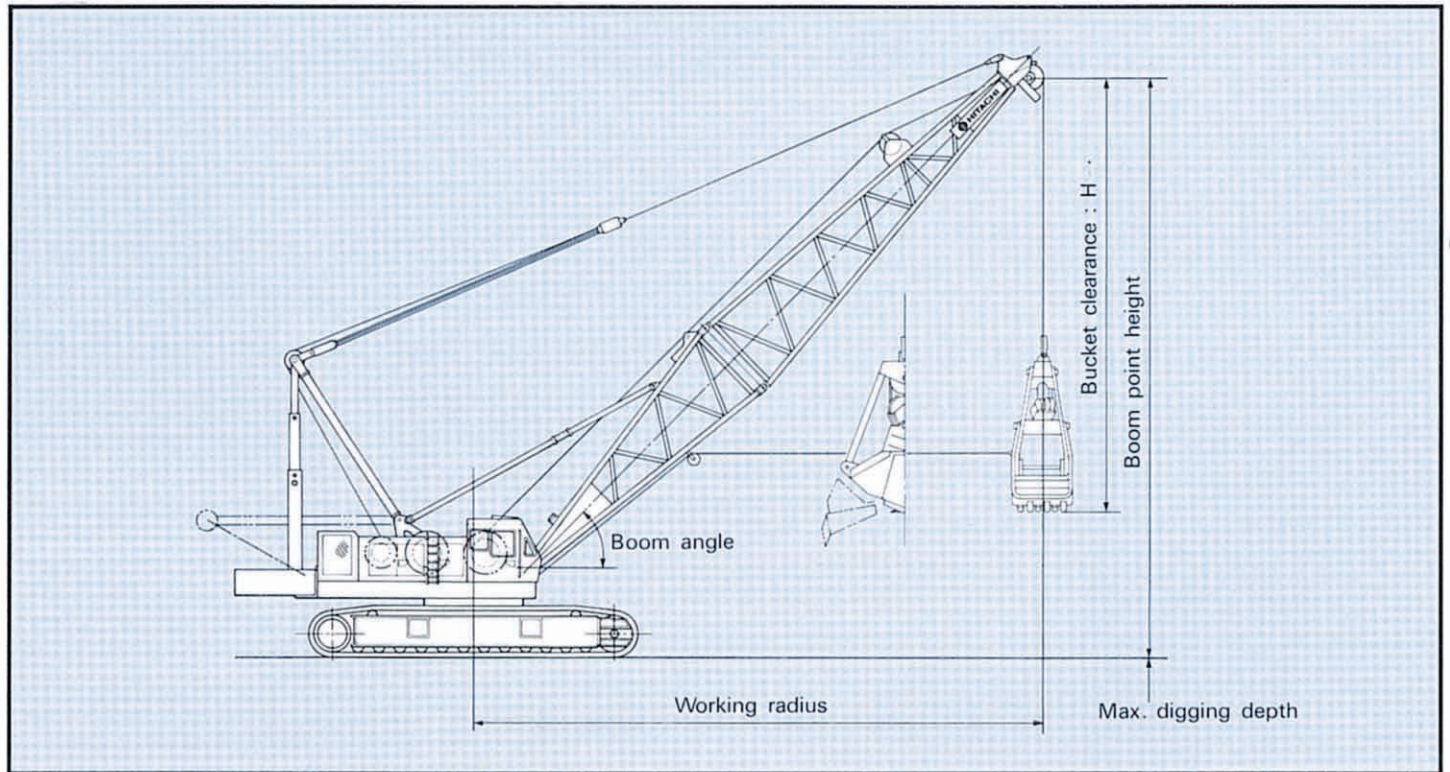
## Jib Construction

Jib length	28.0 m (91'10")	31.0 m (101'8")	34.0 m (111'7")	37.0 m (121'5")	40.0 m (131'3")	43.0 m (141'1")	46.0 m (150'11")	49.0 m (160'9")
Element								
Lower 6.5 m(21'4")	1	1	1	1	1	1	1	1
Upper 6.5 m(21'4")	1	1	1	1	1	1	1	1
Insert 3.0 m(9'10")	—	1	1	—	1	1	—	1
Insert 6.0 m(19'8")	1	1	—	1	1	—	1	1
Insert 9.0 m(29'6")	1	1	2	2	2	3	3	3

# CLAMSHELL

## With Tubular CRANE Boom

### Dimensions



### Specifications

Max. rated load	10 500 kg(23 150 lb)
Bucket capacity	2.5 m <sup>3</sup> (3.3 cu yd)
Boom length	18.0 m(59'1") to 27.0 m(88'7")
Ground pressure	0.78 bar(0.78 kgf/cm <sup>2</sup> , 11.1 psi)
Operating weight	129 000 kg(284 400 lb) When equipped with 18 m(59'1")boom, 2.5 m <sup>3</sup> (3.3 cu yd) bucket and 31 450 kg(69 340 lb) counterweight

The other specifications such as engine horsepower, drum data, swing speed, travel speed, etc. are same as crane basic machine. See page 1-2.

### BUCKETS

Capacity	Self weight	Bucket clearance: H	Application
2.5 m <sup>3</sup> (3.3 cu yd)	5 500 kg(12 130 lb)	6.5 m(21'4")	General purpose
3.5 m <sup>3</sup> (4.6 cu yd)	4 750 kg(10 470 lb)	6.6 m(21'8")	For gravel
5.5 m <sup>3</sup> (7.2 cu yd)	5 000 kg(11 020 lb)	6.5 m(21'4")	For coal loading

## TAGLINE

	<b>Maximum digging depth</b>
Hydraulic operated type	36.0 m(118'1")

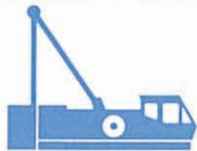
## Clamshell Ratings and Working Ranges

Boom length m(ft in)	Working radius		Boom angle degree	Boom point height		Rated load		
	m	ft in		m	ft in	JIS rating	BS rating	PCSA rating
						kg	kg(lb)	kg(lb)
18.0 (59'1")	16.7	54' 9"	35	12.5	41' 0"	10 500	10 500 (23 150)	10 500 (23 150)
	14.8	48' 7"	45	14.9	48'11"	10 500	10 500 (23 150)	10 500 (23 150)
	12.4	40' 8"	55	17.0	55' 9"	10 500	10 500 (23 150)	10 500 (23 150)
	9.7	31'10"	65	18.6	61' 0"	10 500	10 500 (23 150)	10 500 (23 150)
21.0 (68'11")	19.2	63' 0"	35	14.2	46' 7"	10 500	10 500 (23 150)	10 500 (23 150)
	16.9	55' 5"	45	17.1	56' 1"	10 500	10 500 (23 150)	10 500 (23 150)
	14.1	46' 3"	55	19.5	64' 0"	10 500	10 500 (23 150)	10 500 (23 150)
	11.0	36' 1"	65	21.4	70' 3"	10 500	10 500 (23 150)	10 500 (23 150)
24.0 (78'9")	21.7	71' 2"	35	15.9	52' 2"	10 500	10 500 (23 150)	10 500 (23 150)
	19.0	62' 4"	45	19.2	63' 0"	10 500	10 500 (23 150)	10 500 (23 150)
	15.9	52' 2"	55	21.9	71'10"	10 500	10 500 (23 150)	10 500 (23 150)
	12.3	40' 4"	65	24.1	79' 1"	10 500	10 500 (23 150)	10 500 (23 150)
27.0 (88'7")	24.1	79' 1"	35	17.6	57' 9"	10 500	10 500 (23 150)	10 500 (23 150)
	21.1	69' 3"	45	21.3	69'11"	10 500	10 500 (23 150)	10 500 (23 150)
	17.6	57' 9"	55	24.4	80' 1"	10 500	10 500 (23 150)	10 500 (23 150)
	13.5	44' 3"	65	26.8	87'11"	10 500	10 500 (23 150)	10 500 (23 150)

### Notes:

- The rated loads shown include the bucket weight.  
The load to be actually lifted is the rated load minus bucket weight.
- Counterweight is 31 450 kg (69 340 lb).
- Allowable boom length for clamshell operation is from 18.0 m (59'1") through 27.0 m (88'7").

# Specifications



## SUPERSTRUCTURE



### Engine

Model .....	ISUZU 6RB1T
Type .....	Water-cooled, 4-cycle, 6-cylinders, direct injection chamber type turbocharged diesel engine.
Rated horsepower (DIN 6 270, Net) .....	206 kW (280 PS) at 2 000 min <sup>-1</sup> (2 000 rpm)
Maximum torque .....	1 170 N·m (119 kgf·m, 861 lbf·ft) at 1 400 min <sup>-1</sup> (1 400 rpm).
Piston displacement .....	13.7 l (837 cu in)
Fuel tank capacity .....	400 l (88 Imp gal, 106 U.S. gal)
Electric system .....	24 V DC. AC generating.



### Main and Auxiliary Hoist Mechanism

Both main and auxiliary hoist drums are driven independently by high-torque variable piston motors through reduction gear. Load hoisting/lowering are done by normal/reverse rotation of motor. Smooth, precise power lowering is made possible by the hydraulic brake. As a variable-displacement type hydraulic motor is in use, the motor speed varies automatically with lifting loads.

**Clutches** Clutches are of the spring-set, hydraulic-released internal-expanding friction band type; main and auxiliary clutches are alike in size and type, with interchangeable clutch linings.

**Brakes** External contracting friction band-type mechanical brakes, integrated with link lever, operate under normal load. For a larger load, a spring-type boost device is provided to ensure fatigue-free operation. Mechanical brake locks are equipped as standard. Furthermore, while in neutral position the hoist lever is doubly secured in position by a hydraulic brake and an automatic brake. An automatic brake system or hydraulic positive brake system, in neutral position of the hoist lever, can be selected according to job application.

**Drums** Main and auxiliary hoist drums are of special alloy cast iron. Both hoist drums are mounted on the longtime-lubricated antifriction ball bearings. Drum lugging is so structured as to easily accommodate the changes in wire rope diameter as well as wear and tear of the drum.

**Drum Locks** Drum pawl locks are provided for integral lock of drums. They are manually controllable from the operator's seat.



### Boom Hoist Mechanism

Completely independent operation.

Boom hoisting/lowering is done by normal/reverse rotation of the swash plate type axial piston motor. Boom lowering is made by power lowering through the hydraulic system. Instant hoisting/lowering of boom is possible. Both hydraulic brake and spring-set hydraulic-released multiplate disc type brake offer positive and safe stopping of boom. When boom is hoisted or lowered brakes are automatically released.

**Boom Brakes** Spring-set, hydraulic-released multiplate disc type. Brake is automatically actuated when control lever is at neutral position.

**Drum Locks** Drum pawl lock is manually controlled from operator's seat.



### Swing Mechanism

Completely independent operation. Driven by two swash plate type axial piston motors through reduction gear, swing speeds are freely controllable within the 0 to maximum speed with single lever stroking. Swing mechanism offers two-speed selection of swing.

**Swing Brake/Swing Parking brake** Two spring-set/hydraulic-released multiplate disc type swing brakes can be hydraulically actuated by brake switch on the swing lever. These brake mechanism are used for swing parking brake, too. In this case, cannot start the engine without the brake switch on position for safety.

**Swing Lock** Manually operated mechanical lock with a rod tip which is engaged in a holder of track frame during transportation.

**Swing Circle** Single-row shear-type ball bearing with heat treated internal gear.



## Revolving Frame

All steel welded construction, stress-relieved, precision-machined unit, especially designed for rigidity and strength.

**Gantry** Lowerable for transportation.

Speedy, easy raising/lowering are possible with optional hydraulic cylinders.

**Counterweight** Welded structure. Total weight 57 700 kg (127 200 lb)

Consists of 10 sections:

- One 14 500 kg (31 970 lb)
- One: 8 250 kg (18 190 lb)
- One: 4 350 kg (9 590 lb)
- One: 4 350 kg (9 590 lb)
- One: 4 350 kg (9 590 lb)
- One: 4 350 kg (9 590 lb)
- One: 4 350 kg (9 590 lb)
- One: 4 350 kg (9 590 lb)
- One: 4 350 kg (9 590 lb)
- One: 4 350 kg (9 590 lb)



## Boom

**Tubular Chord CRANE Boom** 2 100 mm (6'11") wide by, 2 100 mm (6'11") deep at connection, lattice construction, high tensile strength steel tubular chord.

Basic boom .....2-piece, total length 18.0 m (59'1"), upper section 10.5 m (34'5") and lower section 7.5 m (24'7")

Boom point .....Offset boom point, 7 sheaves mounted on anti-friction bearings on boom peak. Sheave P.C.D.

Boom insert .....3.0 m (9'10"), 6.0 m (19'8"), 9.0 m (29'6"), and 12.0 m (39'4") long available with appurtenant pendants.

Connection type .....Pin-connected.

Boom backstop .....Dual-rail, telescopic tubular construction with spring bumper.

Boom hoist bridle .....Serves as connection between pendants and boom hoist wire rope reeving, equipped with 9 sheaves [462 mm (18' 2") p.c.d.] for 18-part boom hoist wire rope reeving.



## Operator's Cab

All-weather, well-ventilated, all-round visibility, roomy operator's cab. The completely independent cab is insulated against noise and vibration. Sliding, fold-in front window swings up and stores in roof. Fully adjustable reclining seat.



## UNDERCARRIAGE

**Traction Mechanism** Each track is driven by a swash plate type axial piston motor through reduction gear. The hydraulic motor and reduction mechanism are installed within the width of track link shoe. This mechanism allows counterrotation of tracks for maximum maneuverability in close quarters. When lever is at neutral position, both hydraulic brake and spring-set/hydraulic-released multiplate disc brake are automatically actuated to effect reliable stopping. Upper and lower rollers, sprockets and idlers are lifetime lubricated. A hydraulic track adjuster is provided for easy tension adjustment of each track.

**Track Frame** All-welded, stress relieved, box section construction.

**Side Frame** Side frames of all-welded construction can be retracted for transportation.

**Side Frame Removal Device and Self-loading Device (optional)**

Both right and left side frames can be speedily removed by side frame removal device. And self-loading device allows the machine to load its basic machine onto a trailer through the use of its own hydraulic jack cylinders. Travel motor pipings are connected via self-seal couplings for quick disconnection.

**Side Frame Extending/Retracting Device (optional)** Side frame extending/retracting is done with the cylinder provided inside the track frame. Then, side frame extending/retracting can easily be done in a short time eliminating troublesome piping, etc.

**Track Shoes** Heat treated alloy steel castings with induction hardened roller path and driving lugs. Shoes are connected by induction-hardened steel pins.

NO. of upper rollers (on each side) .....3  
 NO. of lower rollers (on each side) .....12  
 NO. of track shoes (on each side) .....64  
 Shoe width .....1 070 mm (42")

**Track Tension Adjuster** Track tension is adjusted by hydraulic power jack at the front idler bearing block and by inserting proper shims.

# HYDRAULIC SYSTEM

2 variable displacement piston pumps + 2 gear pumps hydraulic system allows both independent and combined operations of all functions. Variable-displacement piston pumps not only adequately control operating speeds, but also utilize engine horsepower to maximum.

	Pump-1	Pump-2
Type of pump	Variable displacement pump	
Pressure setting	310 bar (310 kgf/cm <sup>2</sup> , 4 410 psi)	310 bar (310 kgf/cm <sup>2</sup> , 4 410 psi)
Oil flow	281 l/min (61.8 Imp gpm, 74.2 U.S. gpm)	281 l/min (61.8 Imp gpm, 74.2 U.S. gpm)
Use	• Main hoist • Travel (Right)	• Aux hoist • Boom hoist • Travel (Left)

	Pump-3+4	Pump-5
Type of pump	Gear pump	
Pressure setting	210 bar (210 kgf/cm <sup>2</sup> , 2 990 psi)	40 bar (40 kgf/cm <sup>2</sup> , 569 psi)
Oil flow	218 l/min (48.0 Imp gpm, 57.6 U.S. gpm)	43 l/min (9.5 Imp gpm, 11.4 U.S. gpm)
Use	• swing	• Remote-controlled Hydraulic serve system

**Main and Auxiliary Hoist Motor** Swash plate type axial piston motor with counterbalance valve.

**Boom Hoist Motor** Swash plate type axial piston motor with counterbalance valve.

**Swing Motor** 2 swash plate type axial piston motors.

**Travel Motor** Swash plate type axial piston motor with brake valve and spring-set/hydraulic-released multiplate disc brake.

**Relief and Brake Valves** Each hydraulic circuit incorporates large-capacity relief valves to protect circuit from overload or shock load. Counterbalance valves (compensates safe, positive load lowering and prevents accidental load drop when hydraulic power is suddenly reduced) are provided for hoist motor. Brake valves (consisting of relief valve and counterbalance valve) are provided for travel circuit.

## Pressure Setting

### MAIN CIRCUIT

#### ● Main relief valves

Hoist (main and aux.)	310 bar (310 kgf/cm <sup>2</sup> , 4 410 psi)
Swing	210 bar (210 kgf/cm <sup>2</sup> , 2 990 psi)

#### ● Overload relief valves

Hoist (main and aux.) circuit	310 bar (310 kgf/cm <sup>2</sup> , 4 410 psi)
Boom hoist circuit	310 bar (310 kgf/cm <sup>2</sup> , 4 410 psi)
Travel circuit	300 bar (300 kgf/cm <sup>2</sup> , 4 270 psi)

### PILOT CIRCUIT

#### ● Main relief valve

	40 bar (40 kgf/cm <sup>2</sup> , 569 psi)
--	---

**Line Filters** High filtration 10 $\mu$  full-flow filter element is provided to keep hydraulic oil clean and ensure long-term, trouble-free operation. Pilot filter and suction filter are provided for each circuit.





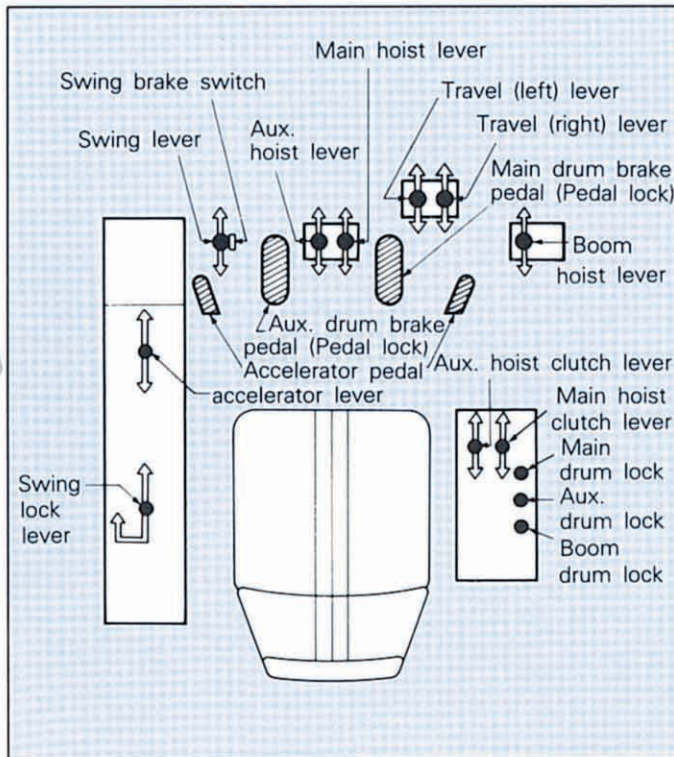
## CONTROLS

**Boom, Main and Auxiliary Hoist and Travel** Remote controlled hydraulic servo. Working speed can be precisely controlled by changing lever stroke.

**Swing** Mechanical linkage type, featuring smooth, precise swing.

**Fuel Control** Two foot throttle (accelerator) pedals and hand throttle (accelerator) controls equipped as standard.

**Ultra-low Speed Control System** Operating speeds for hoisting, boom hoisting/lowering and travel are infinitely variable within a range of 100 to 30% to facilitate alignment, accurate inching and boom detachment under gravity.



This monitor has the following functions

- **Instruments** Machine conditions are shown on meters.
- **Start up inspection monitor** To check the machine condition and safety device before starting operation.
- **Safety monitor** To warn the abnormality of the machine during operation and carelessness. An additional safety function allows the checking of broken electric wires due to boom and hook overhoist.



## SAFETY DEVICES

**Boom Angle Indicator** Mechanical type boom angle indicator is provided at boom foot.

**Counterbalance Valve (Brake Valve)** A counterbalance valve is incorporated in travel motors, boom hoist motor, main and auxiliary hoist motor respectively. In case the hydraulic line is broken, this valve is automatically actuated to prevent motor rotation.

**Spring-set/Hydraulic-released Multiplate Disc Type Travel Brakes**

**Swing Lock and Swing Brake**

**Drum Lock** A pawl type drum lock is adopted for main drum, auxiliary drum and boom drum.

**For Lift Crane**

● **Moment Limiter**

● **Hook Overhoist Prevention Device** When the hook reaches its safety hoist limit, an alarm bell rings and an auto-stop device automatically actuates at the same time.

● **Boom Overhoist Prevention Device** When the boom reaches its safety angle limit, a buzzer alarm sounds and boom hoisting automatically stops at the same time. A telescopic type boom backstop is also installed.

## SERVICE REFILL CAPACITIES

	Liters	Imp gal	U.S gal
Fuel tank .....	440.0	96.7	116.1
Engine coolant .....	50.0	11.0	13.2
Engine oil .....	45.0	9.9	11.9
Pump transmission .....	1.3	0.29	0.34
Boom hoist motor			
reduction device.....	15.0	3.3	4.0
Winch hoist motor reduction			
device (on each side) ...	15.0	3.3	4.0
Swing reduction device			
(on each side).....	4.0	0.9	1.1
Travel final device			
(on each side).....	35.0	7.7	9.2
Hydraulic system (includ-			
ing tank capacity) .....	400.0	87.9	105.5
Hydraulic tank.....	250.0	54.9	66.0

## OPTIONAL EQUIPMENT

**Operator's Cab** Electric fan, cab cooler.

**Auxiliary Jib for Crane Boom** Can be attached to the top of main boom for auxiliary hook-hoisting operation.

**Hydraulic Gantry Cylinders**

**Side Frame Removal Device and Self-loading Device**

**Side Frame Retract Device**

**Joystick Lever**

## FRONT-END ATTACHMENTS AVAILABLE



Crane



Clamshell

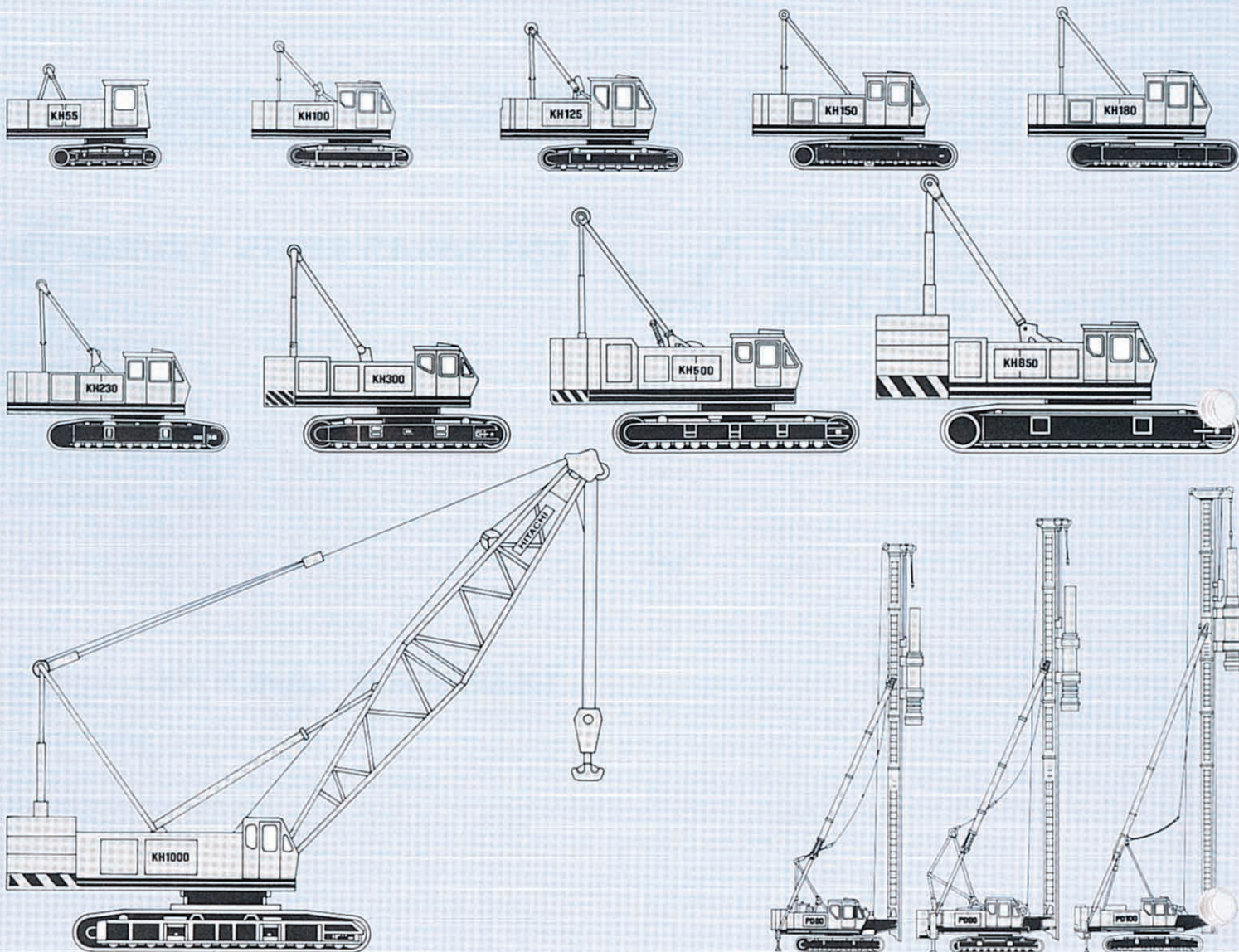


Pontoon-mounted crane



Tower crane

# KH AND PD SERIES



These specifications are subject to change without notice.

## Hitachi Construction Machinery Co., Ltd.

Head Office: Nippon Bldg., 6-2, 2-chome, Ohtemachi, Chiyoda-ku,  
Tokyo 100, Japan

Telephone: Tokyo (03) 3245-6377

Facsimile: Tokyo (03) 3246-2609

Telex: J 32539 HITACONJ

Cable Address: "TOKHITACHIKENKI"