



## SCC8300 Evolutionary Cab

**SANY**

*Quality equipment, superior customer support, global technologies... that's what makes SANY stand out. We are dedicated to designing and building the best equipment in the business.*



### Incredible Control/Less Fatigue

Spacious Interior. New roomy operator seat. Ergonomically positioned joysticks. The custom molded interior covers and integrated heater and A/C unit for maximum operator comfort.

### Stylish Operator Cab Designed by Porsche

The cab maximizes glass space for optimal operator visibility. The working lights and light bar are standard and well positioned. Wide door for easy entry.

### Central Command Console

Sany designed LMI is prominently displayed. It is user friendly, simple to set up and operate. The console also features large tv monitors.



*SANY America, unveiled it's North American manufacturing and support facility in 2011. The plant will incorporate global technologies throughout engineering, manufacturing, finishing, testing in these support facilities. The latest SANY quality assurance procedures will be applied to every product manufactured here.*



The Shapes of Things to Come. SANY...Investing in America.



**SANY**

100 World Dr. Suite 218, Peachtree City, GA 30269  
Tel: 678-251-2869 Fax: 770-631-7731 • Email: sales@sanyamerica.com • www.sanyamerica.com

SCC8300-3a-11 © SANY 2011



**SANY**  
AMERICA INC.



Crawler  
Crane  
SCC8300

Superior Design. Performance. Support.



# SCC8300 Features



**Advanced Manufacturing**  
Robotic welds ensure repeatable, high quality welds throughout chassis, superstructure and all boom sections.



**Advanced Electronics**  
Sany designs and manufactures the electrical and intelligence systems to control quality, efficiency and performance.



**Operator Aids**  
Sany Crawler Cranes feature comprehensive operator aids including: Anti-Two Block (ATB), 3-Wrap Protection, Assembly/Working Mode Switch, Boom Limit, Winch Brake, Aircraft Warning Light, Anemometer, Level Indicator, Function Cut-out, Emergency Operating System, Optional Remote Monitoring System and Boom Walkways.

**Self Assembly**  
From the self assembly cylinder to the carbody outriggers, the Sany SCC8300 was designed to be quickly self assembled.



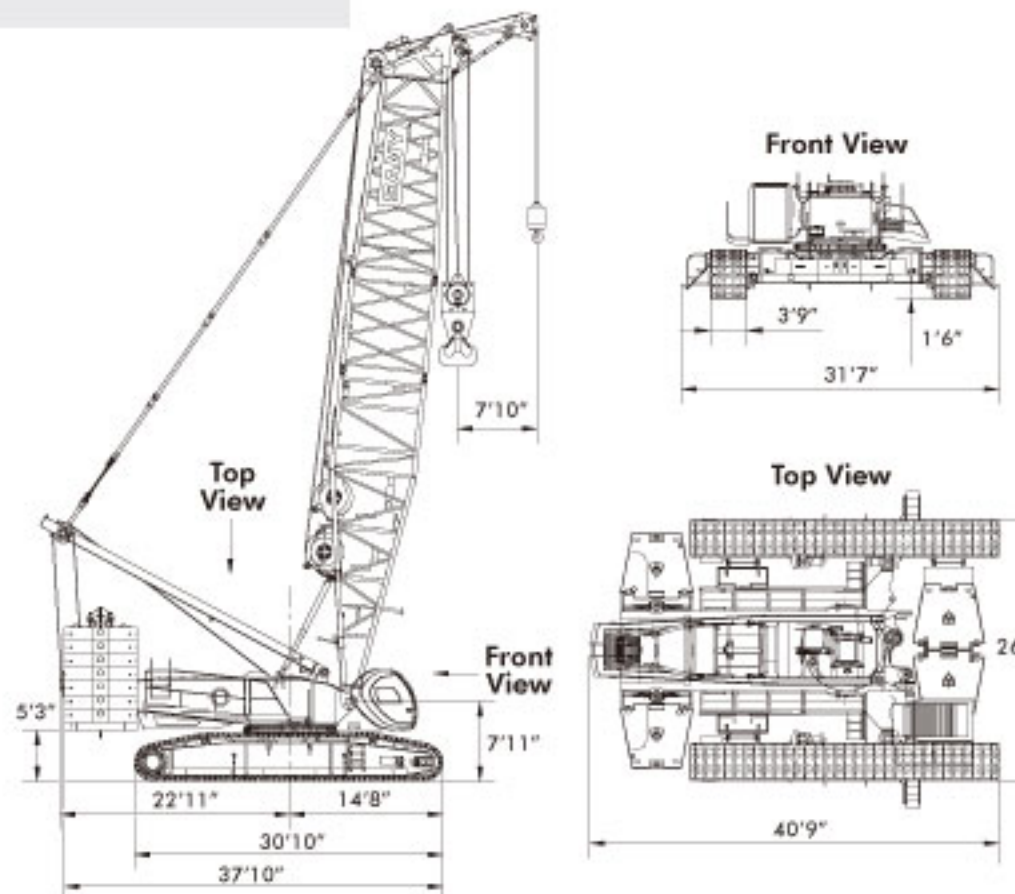
# Specifications



**Comprehensive Testing**  
Third Party Verification to meet: Chinese National Standards European Union ..... EN13000 United States ..... ANSI B30.5



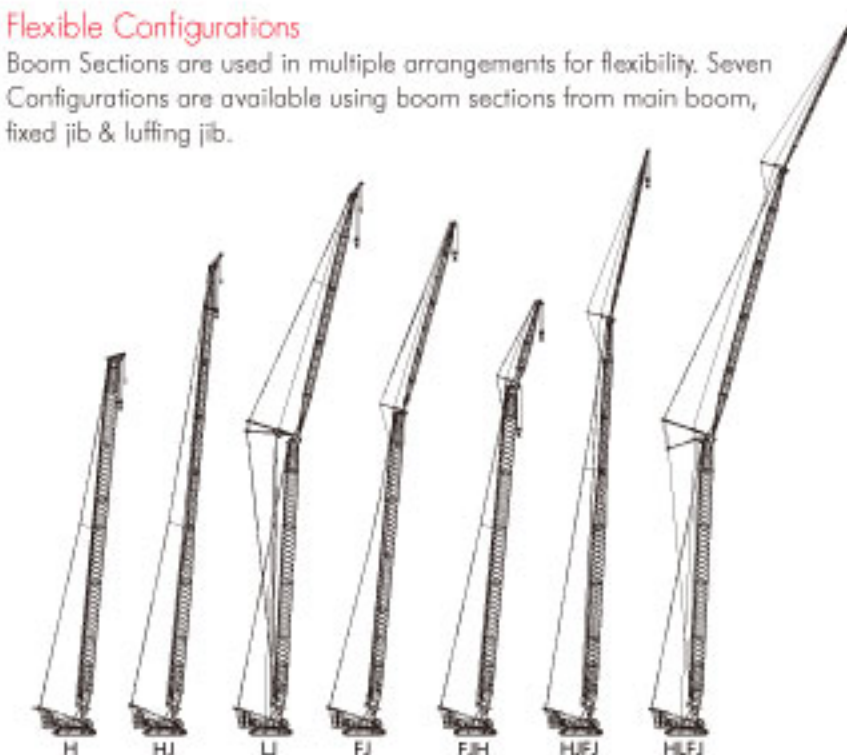
**Transportability**  
Built for transportation on US highways. Main Body is less than 100,000 lbs. Transport width is less than 10 feet. 13 Additional Load Out Trailers for Main Boom Setup ...each less than 56,000 lbs. Add 2 more for full Luffing Jib



<b>Engine</b>	Cummins QSM11 Tier 3 diesel engine (Tier4 - optional) Rated power: 400 hp @ 1800 rpm Rated output torque: 1400lb-ft @ 1400 rpm 277 gallon diesel fuel tank
<b>Hydraulic System</b>	Open loop circuit for main system and close loop circuit for swing system. Electric-over-hydraulic control components. Three 200 gallon oil return filters with multiple pressure alarm, filter plugging alarm, and counterbalance valve for each open circuit motor. 225 gallon hydraulic reservoir.
<b>System Voltage</b>	24 Volt (2 x 12V 1400 CCA)
<b>Swing System</b>	Swing is driven by a single motor with large displacement and planetary gear reducer, automatic load centering and 360° rotation. The maximum swing speed is 1.85rev/min.
<b>Counterweights</b>	Carbody counterweight: 125,776 lb total (4 counterweight blocks, 2 trays) Superstructure counterweight: 282,192 lb. total (14 counterweight blocks, 1 tray)

## Flexible Configurations

Boom Sections are used in multiple arrangements for flexibility. Seven Configurations are available using boom sections from main boom, fixed jib & luffing jib.



Boom	Configuration & Lengths	Maximum Tip Height
Main Boom (H)	• 65 - 302 ft Boom (Available in 13 boom lengths)	• 308 ft
Optional Boom	• High Lift (HJ): 328 ft H+L	• 374 ft
	• Luffing Jib (LJ): 203 ft H & 217 ft LJ	• 420 ft
Optional Boom	• Fixed Jib (FJ): 223 ft H & 138 ft FJ	• 367 ft
	• Heavy Duty Fixed Jib (FJh): 243 ft H & 59 ft FJ	• 308 ft
	• Extended Reach Fixed Jib (HJFJ): 288 ft H+L & 121 ft FJ	• 417 ft
	• Luffing & Fixed Jib Combination (HLFJ): 203 ft H & 197 ft LJ & 37 ft FJ	• 515 ft

## Cummins Engine



## Rexroth Pumps



## Diepa Wire Rope



SCC8300 MAIN BOOM LOAD CHART							
Boom Length (ft)							
Load Rad (ft)	66	105	144	184	223	262	302
	Capacity (lb)						
16	661386						
20	573201						
23	520290	496040					
26	451947	429901	405650				
30	401241	394627	365967	329591			
33	359794	354063	326284	304238			
39	299828	294758	274034	251327	231485	206352	
46	256418	251327	240524	221123	203707	192243	149694
52	221123	219801	207675	192022	177692	164244	137789
59	188275	188495	182102	169094	156748	145284	128750
66		163583	161378	150355	139552	129411	121475
79		127427	125884	121695	113097	104940	95681
92		102735	101413	99208	93696	86642	78705
105			83776	81571	78705	72312	65036
118			70327	68343	65698	61068	54675
131			59745	57761	55116	52029	45856
144				49163	46738	44092	38581
157				42108	39904	37038	32408
171					33951	31306	27117
184					28881	26235	22708
197					24471	22046	18519
210						18298	14991
223						14991	11905
236							8598
249							5512
256							4409

