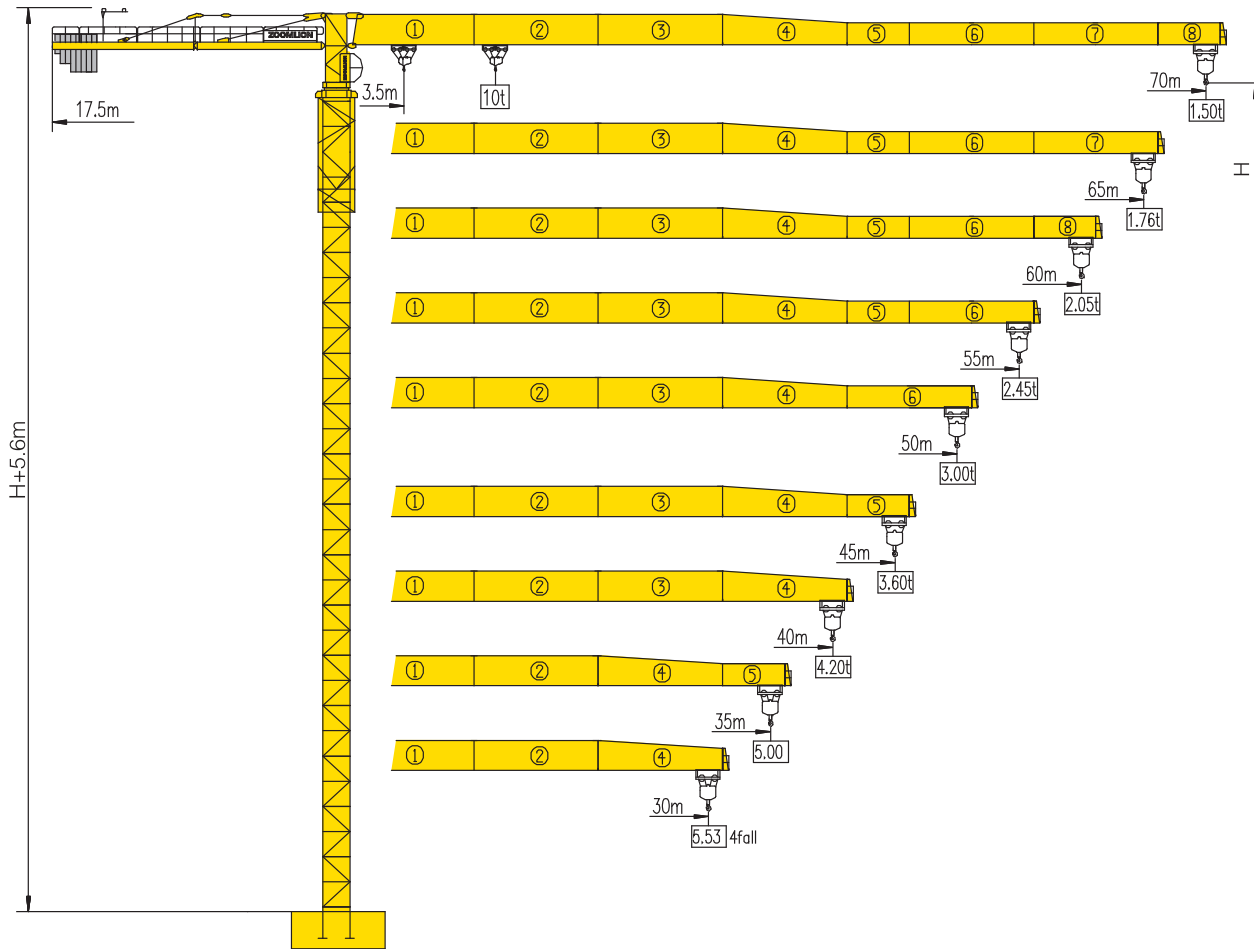


TCT7015-10



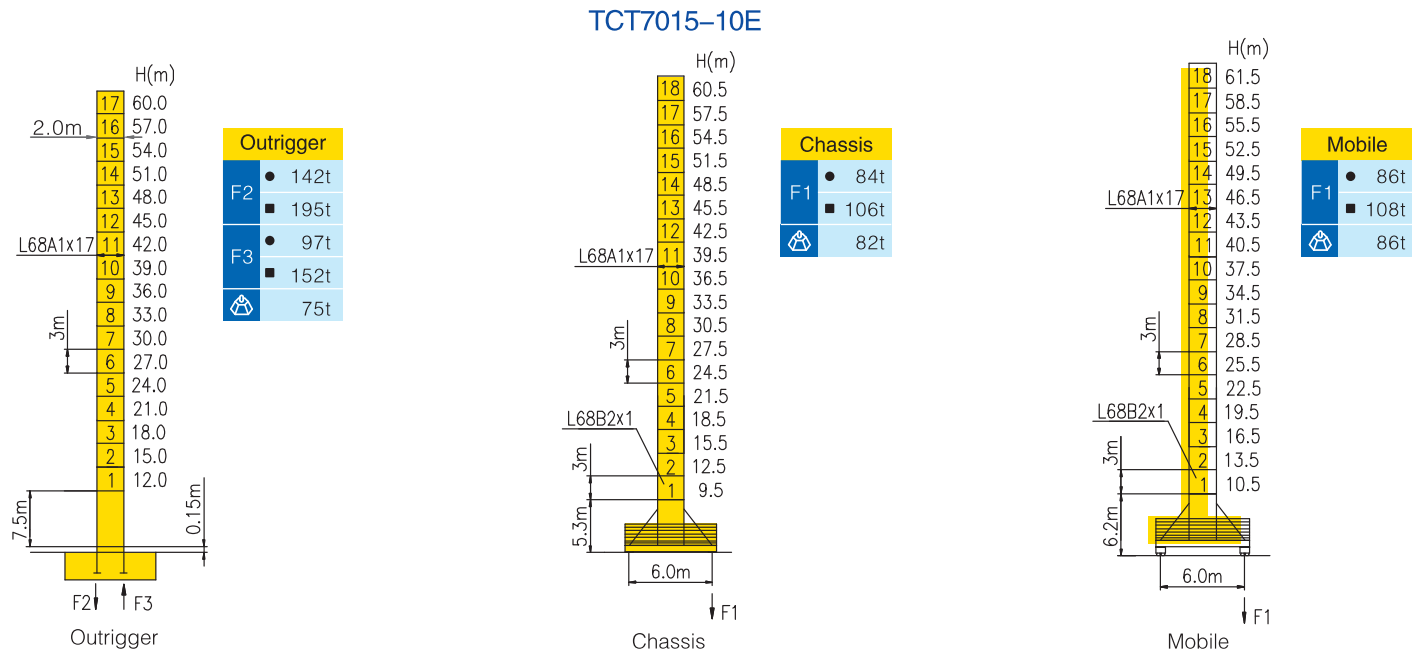
Counter-jib ballast

			(Kg)	PHZ2600	PHZ2400	PHZ1300
70m			19100	5	2	1
65m			17800	5	2	0
60m			16700	5	1	1
55m			15400	5	1	0
50m			14300	5	0	1
45m			13000	5	0	0
40m			11700	4	0	1
35m			9100	3	0	1
30m			8700	1	2	1

Working Height(m) @ Wall-tie Location(m)

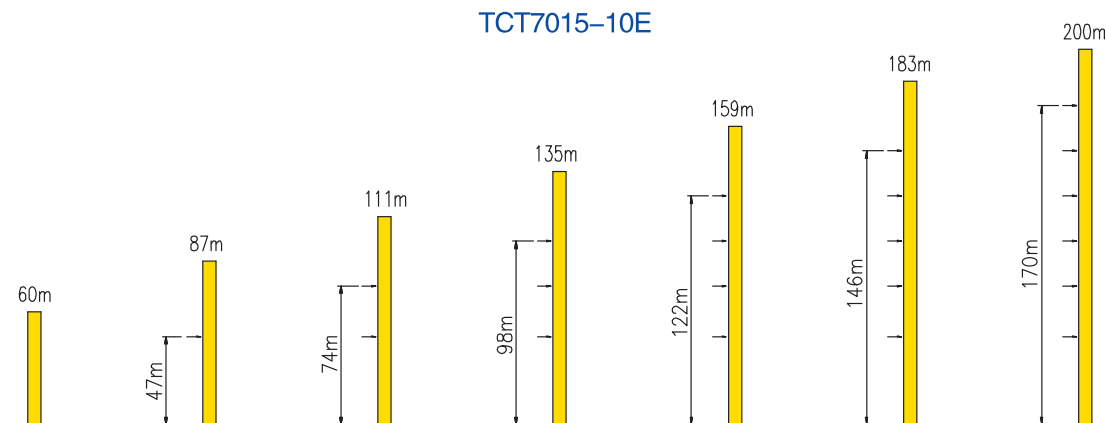
Model Detail	Mast Code	Wall-tie #1	Wall-tie #2	Wall-tie #3	Wall-tie #4	Wall-tie #5	Wall-tie #6
TCT7015-10E	L68A1	87 @ 47	111 @ 74	135 @ 98	159 @ 122	183 @ 146	200 @ 170

Masts Reactions




● Reactions in service ■ Reactions out of service
 ☞ Without load and ballast with longest jib and maximum height
 Ⓢ For more erecting solutions, consult us!



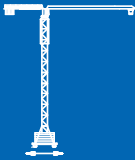



Anchorage



Load diagrams

		Max.Capacity m/t	2.5~12.5	15	20	25	30	35	40	45	50	55	60	65	70	
70m (R=71.75)	⌋	3.75—27.3m 5t	5.00				4.47	3.72	3.16	2.72	2.38	2.10	1.87	1.67	1.50	
	⌋⌋	3.75—14.3m 10t	10.00	9.43	6.67	5.05	3.99	3.24	2.68	2.25	1.90	1.62	1.39	1.19	1.02	
65m (R=66.75)	⌋	3.75—28.3m 5t	5.00				4.67	3.89	3.31	2.86	2.50	2.21	1.96	1.76		
	⌋⌋	3.75—14.8m 10t	10.00	9.85	6.98	5.30	4.19	3.41	2.83	2.38	2.02	1.73	1.49	1.28		
60m (R=61.75)	⌋	3.75—29.2m 5t	5.00				4.84	4.04	3.44	2.97	2.60	2.30	2.05			
	⌋⌋	3.75—15.3m 10t	10.00		7.24	5.51	4.36	3.56	2.96	2.49	2.12	1.82	1.57			
55m (R=56.75)	⌋	3.75—30.6m 5t	5.00				4.27	3.64	3.15	2.77	2.45					
	⌋⌋	3.75—16.0m 10t	10.00		7.66	5.84	4.64	3.80	3.17	2.68	2.29	1.97				
50m (R=51.75)	⌋	3.75—32.6m 5t	5.00				4.61	3.94	3.41	3.00						
	⌋⌋	3.75—17.0m 10t	10.00		8.14	6.32	5.04	4.13	3.46	2.94	2.52					
45m (R=46.75)	⌋	3.75—34.1m 5t	5.00				4.85	4.14	3.60							
	⌋⌋	3.75—17.8m 10t	10.00		8.70	6.66	5.32	4.38	3.67	3.13						
40m (R=41.75)	⌋	3.75—34.5m 5t	5.00				4.91	4.20								
	⌋⌋	3.75—18.0m 10t	10.00		8.81	6.74	5.39	4.44	3.72							
35m (R=36.75)	⌋	3.75—35.0m 5t	5.00													
	⌋⌋	3.75—18.2m 10t	10.00		8.96	6.87	5.49	4.52								
30m (R=31.75)	⌋	3.75—30.0m 5t	5.00													
	⌋⌋	3.75—18.3m 10t	10.00		9.01	6.91	5.53									

Mechanisms

		Hoisting	QE1080D	
	Slewing	RCV145B1.130 RCV145B2.130		
	0~0.7 r/min	2×145 Nm		
	Trolleying	BP55B		
	0~55 m/min	5.5 kW		
	Travelling	ZA52A-D ZC52A-D		
	25/12.5 m/min	2×5.2 kW		
 37/37 kW  540m ⊕ (6 layers) ⊕ Consult us If overtop	IV	⊔	5t	40 m/min
		⊔⊔	10t	20 m/min
	V	⊔	2.5t	80 m/min
		⊔⊔	5t	40 m/min
	380V(+10%~10%) 50Hz		57.5+2×5.2kW	

For more mechanisms optional, consult us!