

HYDRAULIC CRAWLER CRANE

KOBELCO

CKE550

Max. Lifting Capacity: 55 t
Max. Boom Length: 51.8 m
Max. Fixed Jib Combination: 42.7 + 15.2 m
Max. Luffing Jib Combination: 39.3 + 29.0 m

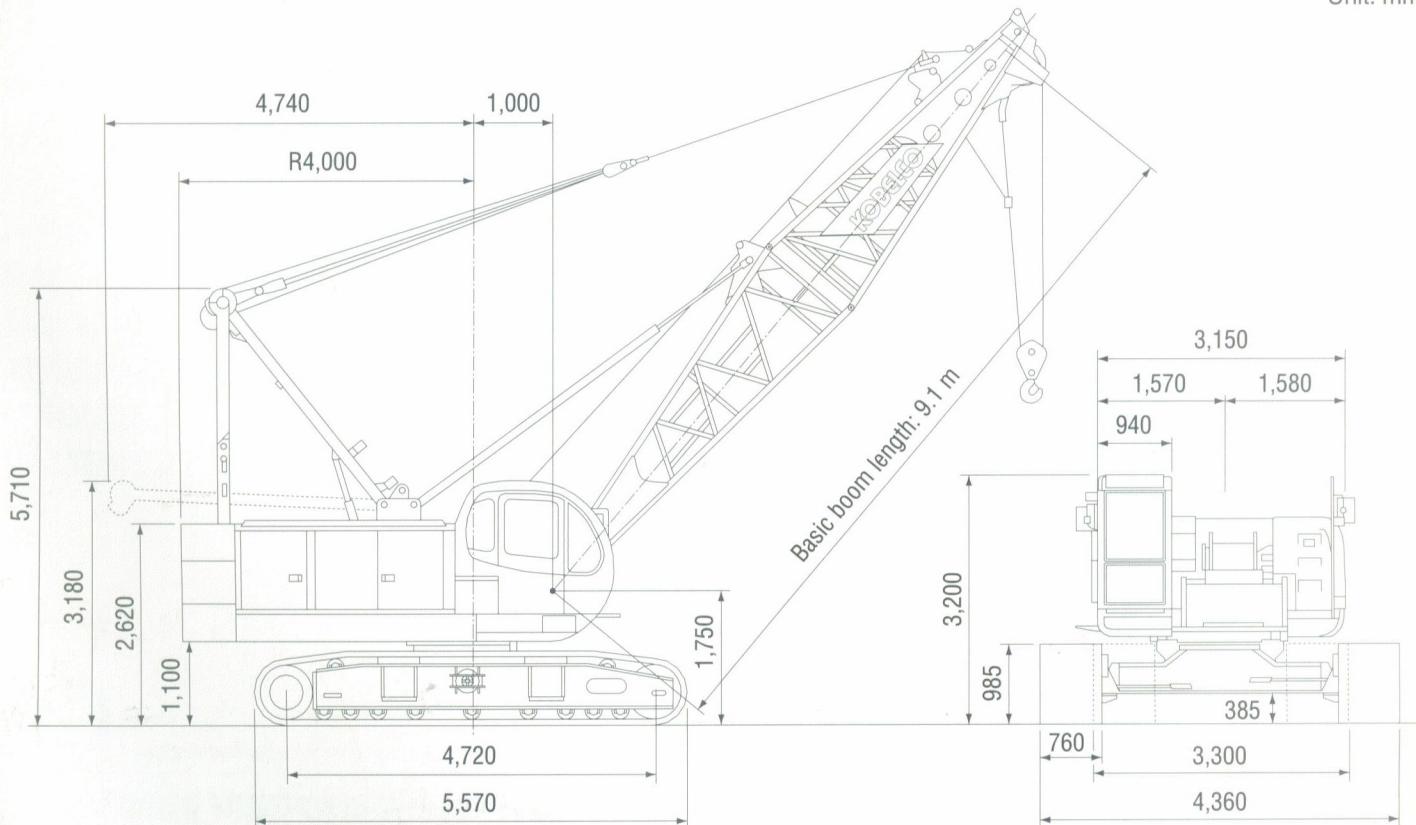
S P E C I F I C A T I O N S

Main Boom	
Max. Lifting Capacity	55 t / 3.5 m
Max. Length	51.8 m
Fixed Jib	
Max. Lifting Capacity	6.6 t
Max. Length	15.2 m
Max. Combination	42.7 m + 15.2 m
Luffing Jib	
Max. Length	29.0 m
Max. Combination	39.3 m + 29.0 m
Main & Aux. Winch	
Max. Line Speed	100 m/min (1st layer)
Rated Line Pull	64.7 kN (6.6 tf)
Max. Line Pull	167 kN (17 tf)
Wire Rope	22 mm
Wire Rope Length	175 m (Main) 120 m (Aux.)
Brake Type	Band brake
Free-Fall	Standard

Working Speed	
Swing Speed	3.7 min ⁻¹ (rpm)
Travel Speed	2.2/1.4 km/h
Power Plant	
Model	Mitsubishi 6D16-TUF
Engine Output	132 kW/2,150 min ⁻¹ (rpm)
Fuel Tank Capacity	360 liters
Hydraulic System	
Main Pumps	3 variable displacement
Max. Pressure	30.9 MPa (315 kgf/cm ²)
Hydraulic Tank Capacity	350 liters
Weight	
Operating Weight	Approx. 52.6 t
Counterweight	17.0 t
Transport Weight	33.9 t (Main machine with crawler and lower boom)
Ground Pressure	67 kPa (0.68 kgf/cm ²)

GENERAL DIMENSIONS

Unit: mm



KOBELCO CONSTRUCTION MACHINERY CO., LTD.