

33 tmE

 GRU ELETTRICA
ELECTRIC CRANE
ELEKTRO INDUSTRIE-KRAN
GRUE ELECTRIQUE



ORMIG s.p.a.

TEL. (+39) 0143.80051 r.a.
TELEFAX (+39) 0143.86568
E-mail: mktg@ormigspa.com
E-mail: sales@ormigspa.com
www.ormig.com - www.pickandcarry.com

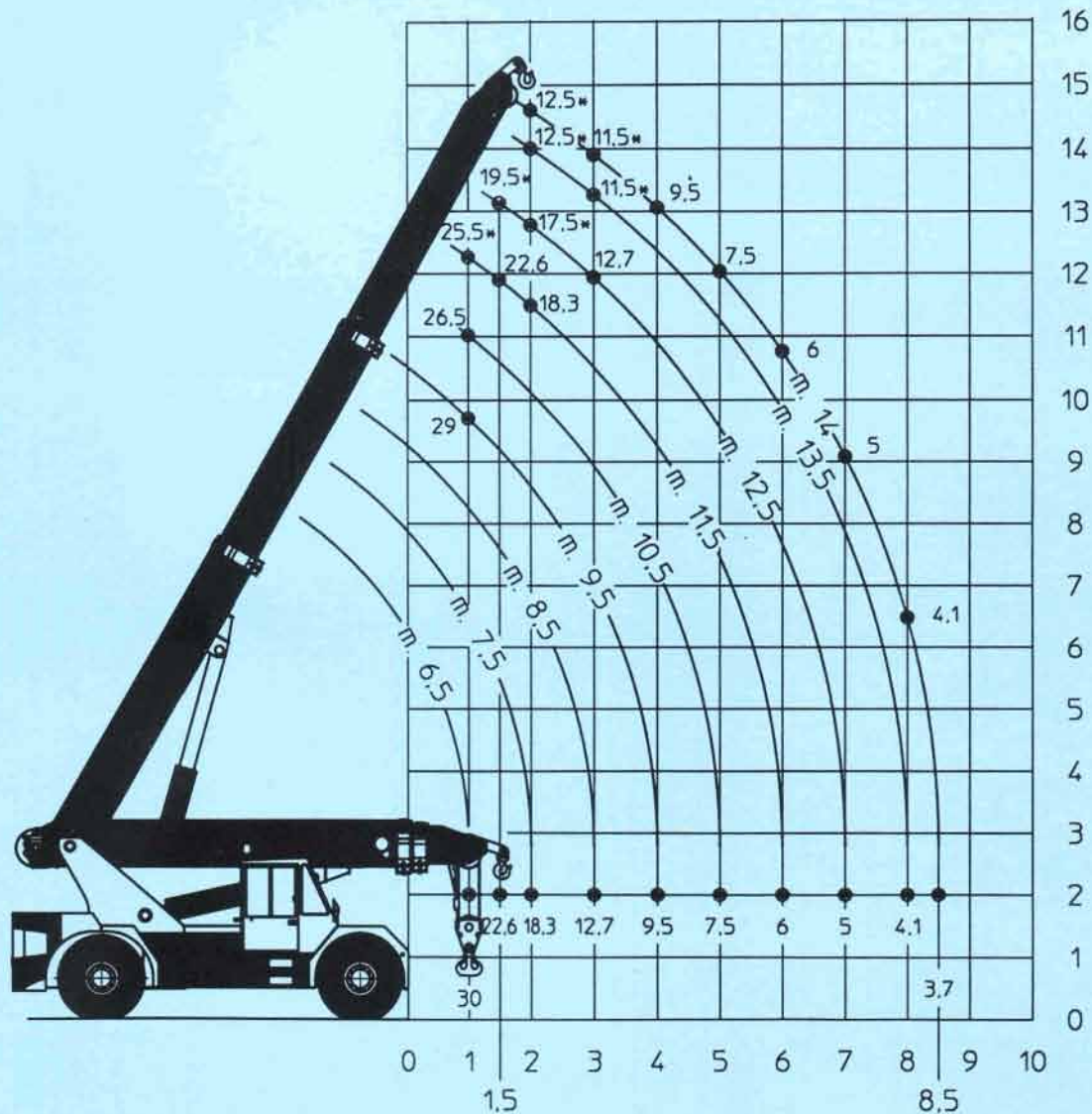
ORMIG S.p.A.
PIAZZALE ORMIG
P.O. BOX 63
15076 OVADA (AL)
ITALY

TECHNICAL FEATURES

- Frame:** Structure formed by two side members fabricated from bended plate at "C" shape and box type, connected by means of crosspieces in the front and rear part corresponding to the axles location.
- Driving motor:** Electric c.c., 36 Kw power, max torque 600 Nm., electronic system for operating controls.
- Speed gearbox:** Two speeds. Hydraulically operated by means of electric control from the cab.
- Axle:** Front driving rigid axle. Steering rear axle with central oscillation.
- Tyres:** 14.00-24-28PR, dual at front axle and single at rear axle.
- Steering:** Hydraulic steering with one main pump and an emergency pump fitted in the front axle. Min. outer turning circle radius: 6.595 m
- Brakes:** In compliance with EC regulations.
Hydraulically operated service brake acting at front and rear wheels, by means of power-assisted foot pedal control.
Mechanical parking brake, spring type, acting at front wheels by means of electric selector.
- Cab:** Steel structure. Projected and manufactured in such a way as to assure a wide visibility. Complete with rear view mirrors, full controls, windshield - wipers, adjustable anatomical seat. The various movements are controlled by levers equipped with electrical device against unforseen operations.
- Electrical system:** 96 V c.c. by means of lead-acid accumulator with 1440 Ah capacity (about 8 hours ability) formed by 48 elements. 24 V lighting system c.c. through converter 86/24 V. Separated battery charge.
- Boom:** Fabricated from plate at high strength.
It is connected to the frame by means of the rear supporting parts.
Telescopic type boom with a base section and two extensions which extraction is controlled by two double action hydraulic cylinders.
Derricking by means of double action cylinders.
- Hydraulic system:** Operated by one section electro-pump for the derricking, boom extraction, winch or hydraulic flyjib.
Electric motor c.c. 26 Kw; electronic system for operating control. Hydraulic oil tank capacity/ 260 litres.
- Motor for services:** Electric c.c., 7 Kw power, operating control by electronic system.
- Electronic unit:** Three separated electronic stations, one for each electric motor, in interface position. MOSFET transistor technology and starting self-diagnostic check and operations survey for prompt indications on the dashboard of eventual problems and type.
Should the breakdown be of danger for the operator, the corresponding motion is cut out.
Each electronic station keeps in storage all eventual failures occurred during the complete crane life.
- Safe load device:** Electronic type with cut out of the operations which can cause dangerous conditions.
- Safety regulations:** The crane is fitted with all safety devices as per regulations in force; it complies with safety and health rules as per Encl. 1 of Machine Directive 89/392 and subsequent amendment.
Therefore, the mark "CE" is provided on the crane equipped with electronic safe load device.
- Weights:**
- | | |
|--|--|
| Crane with standard counterweight total 27900 Kg | Crane with standard and auxiliary counterweight total 30400 Kg |
| front axle 11400 Kg | front axle 11100 Kg |
| rear axle 16500 Kg | rear axle 19300 Kg |
- Equipment on request:** Special flyjibs - Fix hook at boom top - Battery charge on the crane - Cab heater (fuel type) - Spare wheel.

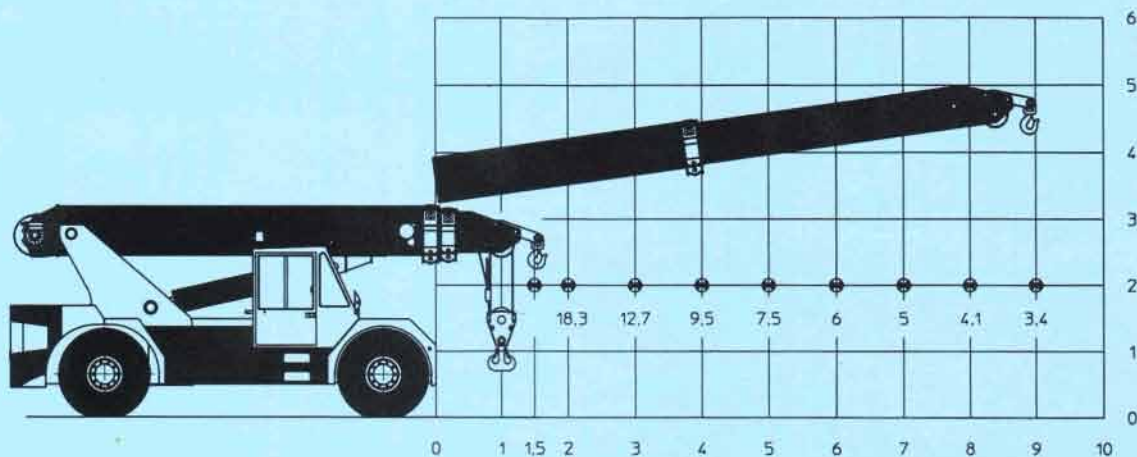
Din 15019.2

TABELLA PORTATA DI SOLLEVAMENTO CON CONTRAPPESO STANDARD (TON)
 LIFTING CAPACITY CHART WITH STANDARD COUNTERWEIGHT (TONNES)
 HUBLASTTABELLE MIT STANDARD GEGENGEWICHT (TONNEN)
 TABLEAU DE CHARGE AVEC CONTREPOIDS STANDARD (TONNES)



Din 15019.2

TABELLA PORTATA GANCIO FISSO CON CONTRAPPESO STANDARD (TON)
 LIFTING CAPACITY CHART WITH FIX HOOK AND STANDARD COUNTERWEIGHT (TONNES)
 HUBLASTTABELLE MIT FIXEN LASTHAKEN, STANDARD GEGENGEWICHT (TONNEN)
 TABLEAU DE CHARGE AVEC CROCHET FIXE ET CONTREPOIDS STANDARD (TONNES)



* Portate determinate da fattori diversi dal ribaltamento

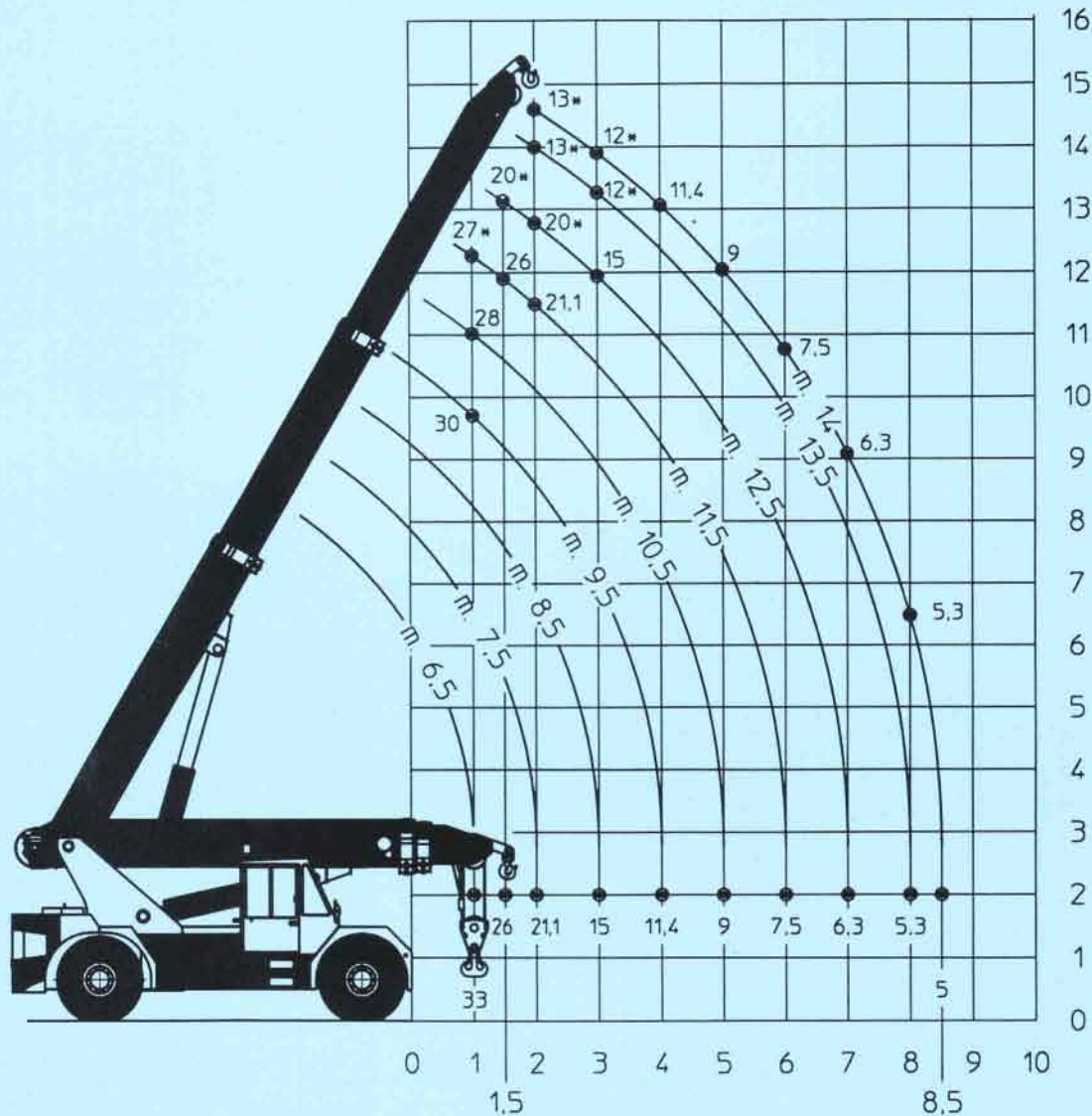
* Capacities determined by factors other than tipping load

* Das Kippmoment wird auch noch von anderen Faktoren als der zu Hebenden Last bestimmt

* Forces de levage déterminées par des facteurs autres que le basculement

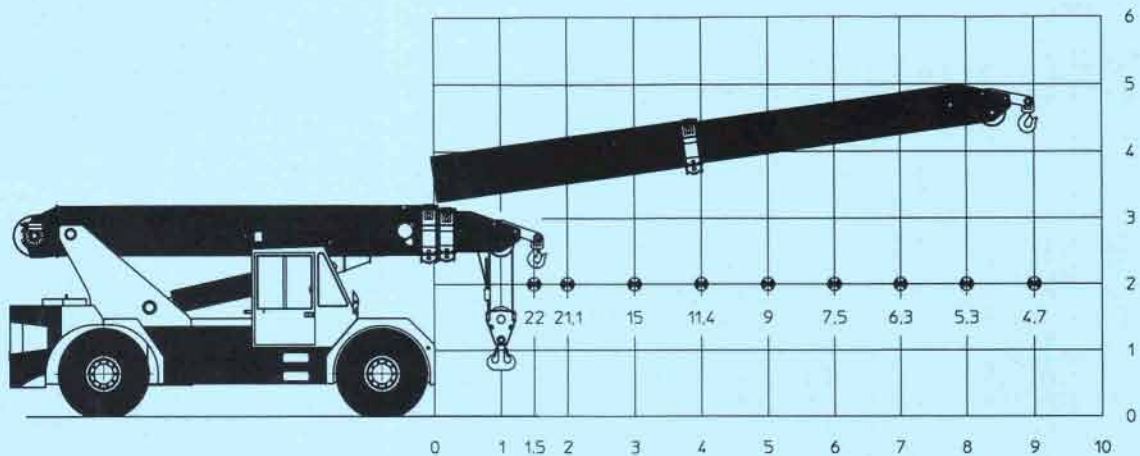
Din 15019.2

TABELLA PORTATA DI SOLLEVAMENTO CON CONTRAPPESO AUSILIARIO (TON)
 LIFTING CAPACITY CHART WITH AUXILIARY COUNTERWEIGHT (TONNES)
 HUBLASTTABELLE MIT ZUSATZGEGENGEWICHT (TONNEN)
 TABLEAU DE CHARGE AVEC CONTREPOIDS SUPPLEMENTAIRE (TONNES)



Din 15019.2

TABELLA PORTATA GANCIO FISSO CON CONTRAPPESO AUSILIARIO (TON)
 LIFTING CAPACITY CHART WITH FIX HOOK AND AUXILIARY COUNTERWEIGHT (TONNES)
 HUBLASTTABELLE MIT FIXEN LASTHAKEN, ZUSATZGEGENGEWICHT (TONNEN)
 TABLEAU DE CHARGE AVEC CROCHET FIXE ET CONTREPOIDS SUPPLEMENTAIRE (TONNES)



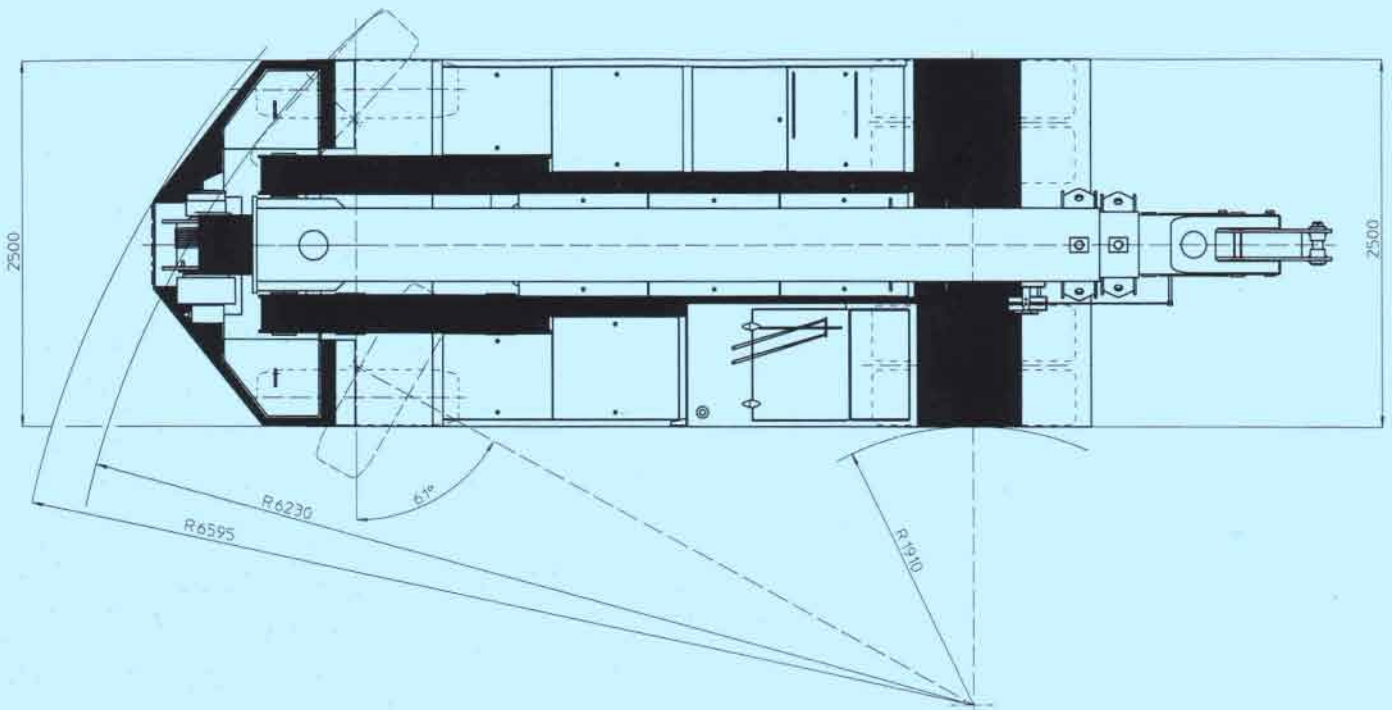
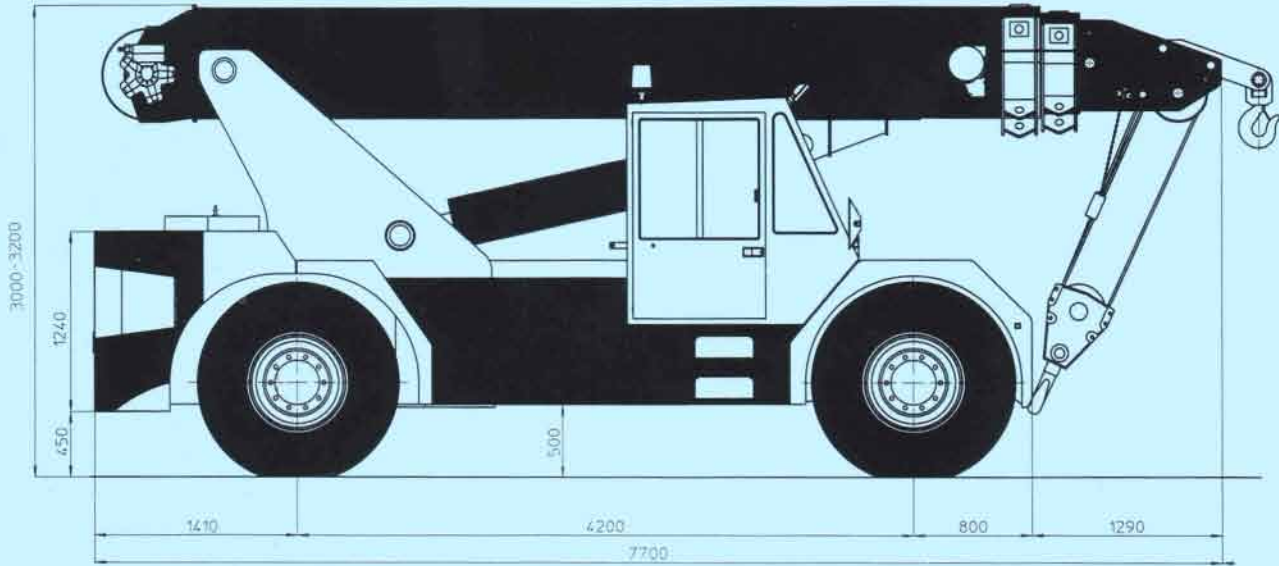
* Portate determinate da fattori diversi dal ribaltamento

* Capacities determined by factors other than tipping load

* Das Kippmoment wird auch noch von anderen Faktoren als der zu Hebenden Last bestimmt

* Forces de levage déterminées par des facteurs autres que le basculement

**DIMENSIONI GENERALI - GENERAL DIMENSIONS
HAUPTABMESSUNGEN - DIMENSIONS GENERALES**



TEL. (+39) 0143.80051 r.a.
 TELEFAX (+39) 0143.86568
 E-mail: mktg@ormigspa.com
 E-mail: sales@ormigspa.com
 www.ormig.com - www.pickandcarry.com

ORMIG S.p.A.
 PIAZZALE ORMIG
 P.O. BOX 63
 15076 OVADA (AL)
 ITALY