



LC785B Crawler Crane

The Maeda LC785 crawler crane manages a monstrous lift capacity of 4.9 tons while using no outriggers. The air conditioned cab is a pleasurable place to be while working with the machine and with near zero tail swing, this crawler crane is a class leader in safety on site.



Features at a glance...

- 4.9 Ton Max capacity
- 16.35m Max Working Height (MWH)
- 20.3m (MWH) With Optional Fly Jib
- Blade
- 2000kg Pick & Carry Duty
- Minimal Tail Swing
- Fully Enclosed Air Conditioned Cab
- Steel Tracks (optional rubber pads)
- Variable (Hi/Lo) Travel Speeds
- Programmable Moment Limiter
- Hydrostatic Transmission
- 4 Fall / 2 Fall Hook Block
- Tilt Sensor/Alarm
- Powerful Two Speed Winch
- Hydraulic Disc Brake
- 2 Year Warranty

More Images...



Railway Maintenance



Restricted Access



Industrial Maintenance



General Lifting



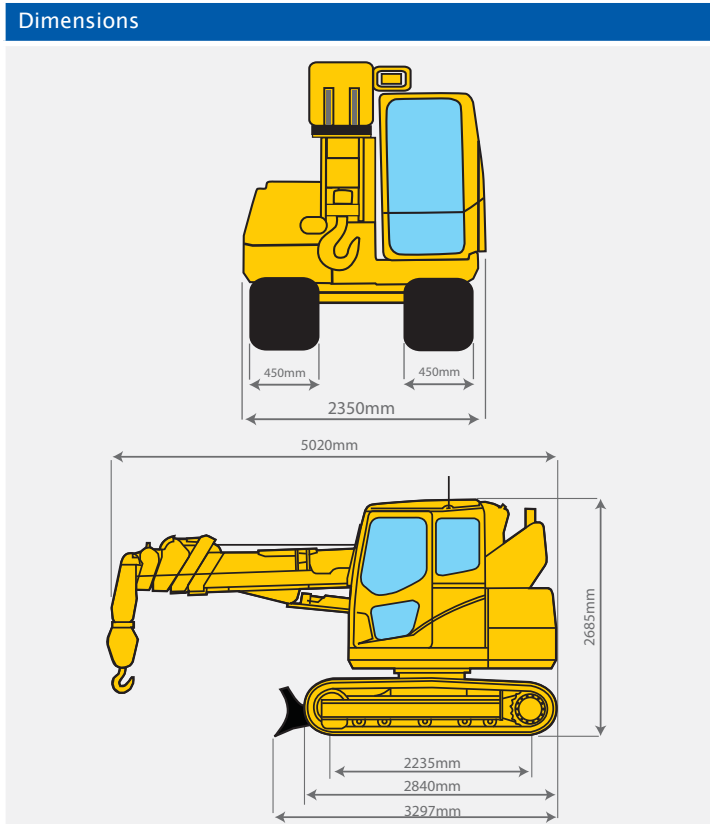
Glazing

... consider the possibilities



Specifications	
Capacity	Maximum 4.9t x 2.1m
Working Radius	Maximum 14.52m x 200kg
Lifting Height	Maximum 16.35m x 1400kg (20.3m x 430kg with Fly-Jib)
Dimensions	LC785B 5020mm x 2350mm x 2685mm
Weight	LC785B 10250kg (10420kg with Fly-Jib)
Hook Speed	Two Speed 27/39m / min (4 falls, 4th layer)
Single Line Speed	Two Speed 108/156m / min (4th layer)
Hoist Rope	Type IWRC 6 x Fi (29) Ø 10mm x 115m
Telescopic System	Boom length 4.63m - 15.63m Telescoping speed 11m / 24.5 sec. Boom type Fully automatic 5 section pentagonal telescopic boom
Boom Hoist System	Hoist angle / speed -2° to 80° / 12.5 sec.
Slew System	Slew angle / speed 360° continuous / 2.4 rpm
Drive	Type Independent steering controls, hydraulic piston motor with built-in automatic brake, planet reduction gears and sprocket crawler.
Traction Speed	Low 0 - 2.5km/h High 0 - 3.8km/h Gradability 20° Ground length x width 2235mm x 450mm (Track dimensions) Ground pressure 0.51 kgf / cm ² (0.52 kgf / cm ² with Fly-Jib)
Engine	Model Komatsu S4D95LE-3-A Type 4 cylinder diesel, water cooled, direct injection Rated output 40.5 Kw / 1850 rpm Starting method Electric Fuel tank capacity Diesel / 141L
Standard Equipment	Moment limiter, steel tracks, overwind protection, hydraulic safety valves, level, EMO switch, working status lamp, air conditioning, 4-fall / 2-fall hook block, working light, hour-meter, inclination alarm and blade.
Optional Equipment	Single fall hook block, black or white rubber pads and fly-jib.

Maximum Reach Below Ground Level		
Four Fall	Two Fall	Single Fall
24.50m	50.50m	103.50m



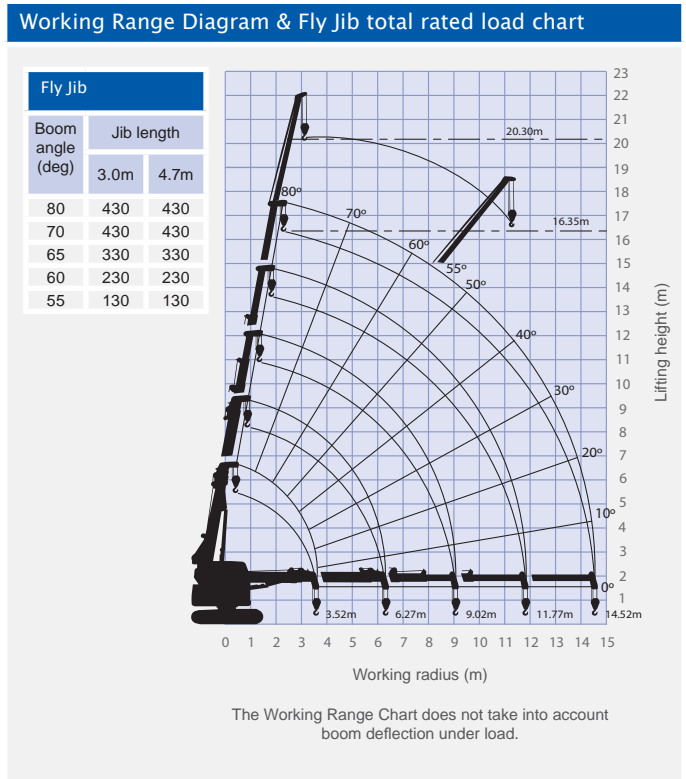
Total rated load									
4.63m boom		7.38m boom		10.13m boom		12.88m boom		15.63m boom	
Working radius (m)	Total rated load (kg)	Working radius (m)	Total rated load (kg)	Working radius (m)	Total rated load (kg)	Working radius (m)	Total rated load (kg)	Working radius (m)	Total rated load (kg)
2	4900	2	4900	2	2600	2	2000	2	
2.5	3800	2.5	3760	2.5	2600	2.5	2000	2.5	1400
3	2900	3	2980	3	2310	3	2000	3	1400
3.5	2290	3.5	2420	3.5	2010	3.5	1890	3.5	1400
4		4	2000	4	1750	4	1650	4	1400
4.5		4.5	1670	4.5	1530	4.5	1450	4.5	1320
5		5	1400	5	1340	5	1280	5	1200
6		6	1000	6	1030	6	1010	6	990
7		7		7	780	7	800	7	820
8		8		8	580	8	630	8	680
9		9		9	410	9	500	9	560
10		10		10		10	390	10	450
11		11		11		11	300	11	360
12		12		12		12		12	280
13		13		13		13		13	210
14		14		14		14		14	200
14.52		14.52		14.52		14.52		14.52	200

Pick & Carry Duties					
4.63m boom		7.38m boom		10.13m boom	
Working radius (m)	Total rated load (kg)	Working radius (m)	Total rated load (kg)	Working radius (m)	Total rated load (kg)
2	2000	2	2000	2	1400
2.5	2000	2.5	2000	2.5	1400
3	1670	3	1700	3	1360
3.5	1330	3.5	1380	3.5	1170
		4	1140	4	1020
		4.5	960	4.5	890
		5	810	5	770
		5.5	690	5.5	680
		6	590	6	590
		6.27	540	6.27	550
				6.5	510
				7	440
				7.5	380
				8	320
				8.5	270
				9	230
				9.02	230

Pick & Carry duties are available at boom lengths up to 10.13 metres.

The Total Rated Load Charts are based on the actual working radius including boom deflection. The weight of the hook (standard 4 fall - 90kg) must be included as part of the load shown in the Total Rated Load Charts.

When using two fall or single fall hooks, use the appropriate four fall Total Rated Load Chart above but with a **maximum load** of: Two Fall - 2450kg, Single Fall - 1220kg.



The Working Range Chart does not take into account boom deflection under load.