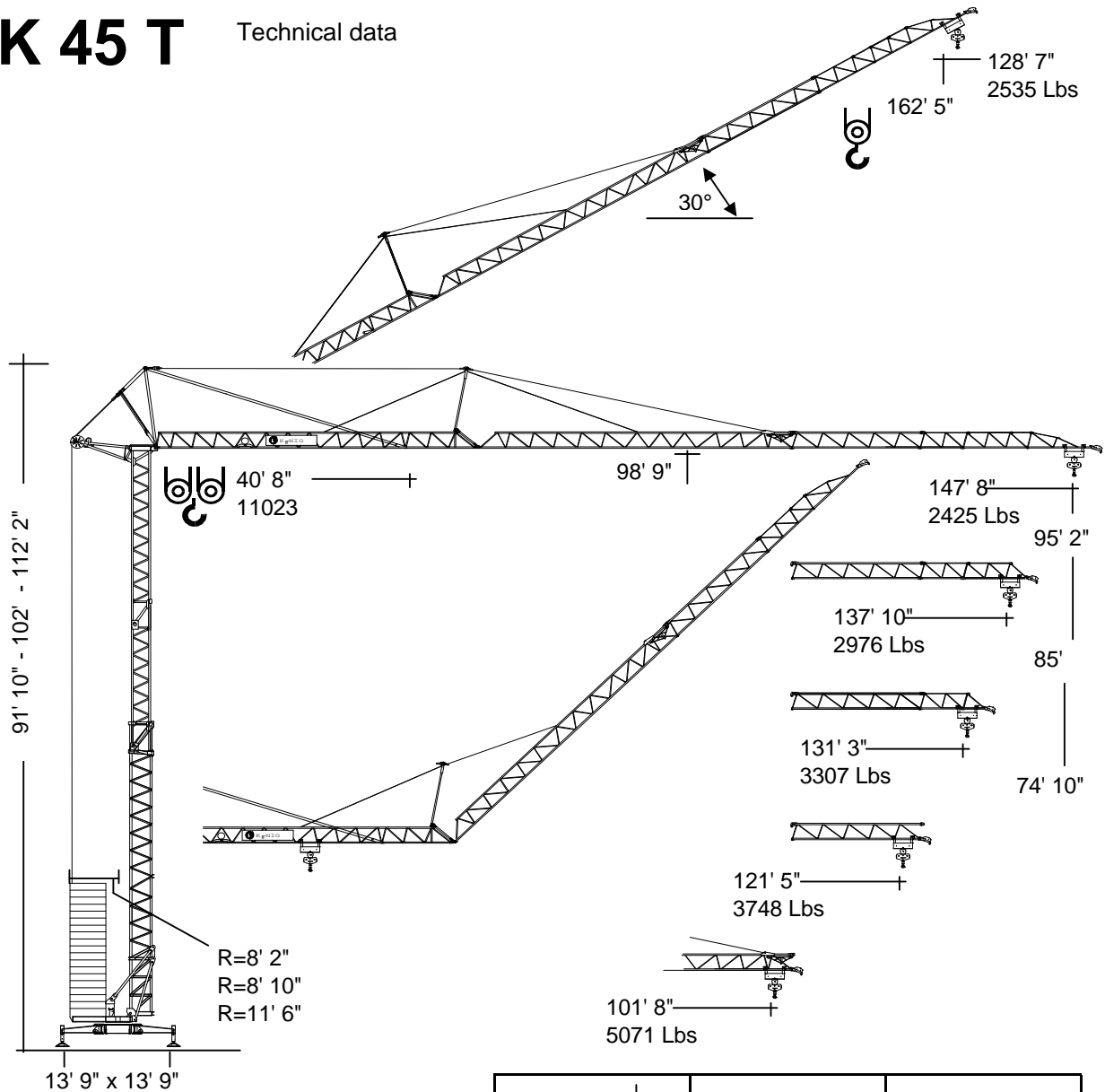


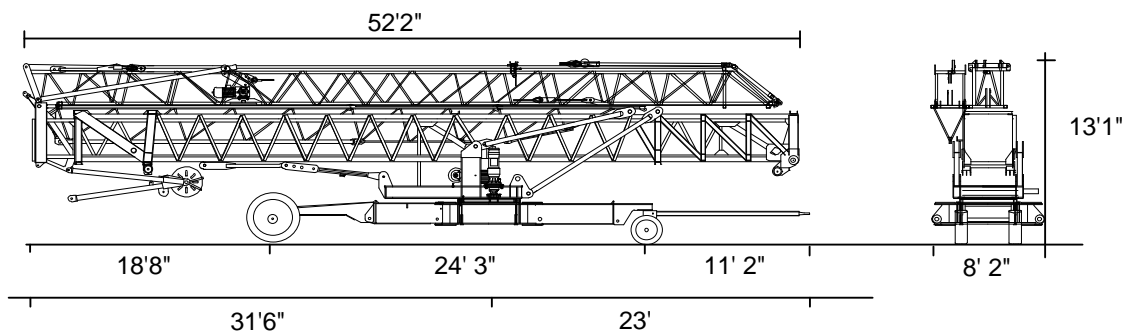
K 45 T

Technical data



| | In service | Out of service |
|-----------|------------|----------------|
| Reactions | 33 Tons | 29 Tons |

Transport by road



Radius and capacity

| Radius | | Max. Capacity | | ft x lbs | | | | | | | | | | | |
|--------|----|---------------|-----|----------|------|------|------|------|------|------|------|------|------|------|------|
| Ft. | 0° | T | Ft. | 66 | 72 | 79 | 85 | 92 | 98 | 102 | 112 | 121 | 131 | 138 | 148 |
| 148 | | 2.7 | 75 | 5512 | 5512 | 5247 | 4784 | 4387 | 4056 | 3902 | 3505 | 3197 | 2910 | 2756 | 2535 |
| 138 | | 2.7 | 83 | 5512 | 5512 | 5512 | 5335 | 4916 | 4541 | 4365 | 3946 | 3571 | 3263 | 3086 | |
| 131 | | 2.7 | 86 | 5512 | 5512 | 5512 | 5512 | 5137 | 4740 | 4564 | 4123 | 3748 | 3417 | | |
| 121 | | 2.7 | 88 | 5512 | 5512 | 5512 | 5512 | 5291 | 4894 | 4718 | 4255 | 3858 | | | |
| 102 | | 2.7 | 96 | 5512 | 5512 | 5512 | 5512 | 5512 | 5379 | 5181 | | | | | |
| 30° | | Radius | | 58 | 63 | 69 | 74 | 80 | 86 | 89 | 97 | 106 | 114 | 120 | 128 |
| 30° | | Hook Height | | 121 | 125 | 128 | 131 | 134 | 138 | 139 | 144 | 149 | 154 | 157 | 162 |

| Radius | | Max. Capacity | | ft x lbs | | | | | | | | | | | |
|--------|----|---------------|-----|----------|-------|------|------|------|------|------|------|------|------|------|------|
| Ft. | 0° | T | Ft. | 43 | 52 | 62 | 72 | 82 | 92 | 102 | 112 | 121 | 131 | 138 | 147 |
| 148 | | 2.7 | 73 | 5512 | 5512 | 5512 | 5512 | 4894 | 4277 | 3792 | 3395 | 3086 | 2800 | 2645 | 2425 |
| | | 5.5 | 41 | 10604 | 8267 | 6746 | 5688 | 4894 | 4277 | 3792 | 3395 | 3086 | 2800 | 2645 | 2425 |
| 138 | | 2.7 | 80 | 5512 | 5512 | 5512 | 5512 | 5489 | 4806 | 4255 | 3836 | 3461 | 3152 | 2976 | |
| | | 5.5 | 45 | 11023 | 9215 | 7539 | 6349 | 5489 | 4806 | 4255 | 3836 | 3461 | 3152 | 2976 | |
| 131 | | 2.7 | 83 | 5512 | 5512 | 5512 | 5512 | 5512 | 5026 | 4453 | 4012 | 3637 | 3307 | | |
| | | 5.5 | 46 | 11023 | 9634 | 7870 | 6636 | 5732 | 5026 | 4453 | 4012 | 3637 | 3307 | | |
| 121 | | 2.7 | 86 | 5512 | 5512 | 5512 | 5512 | 5512 | 5781 | 4607 | 4145 | 3748 | | | |
| | | 5.5 | 47 | 11023 | 9943 | 8135 | 6856 | 5908 | 5181 | 4607 | 4145 | 3748 | | | |
| 102 | | 2.7 | 93 | 5512 | 5512 | 5512 | 5512 | 5512 | 5512 | 5070 | | | | | |
| | | 5.5 | 51 | 11023 | 10891 | 8906 | 7517 | 6506 | 5710 | 5070 | | | | | |

Radius in feet

Capacity in lbs

Speeds

| | Stufe | Step | Cran | m/min. | kg | kW |
|--|-------|-------|------|----------|------------|---------|
| | 1 | | | 21-10 | 5512-11023 | 3.75 |
| | 2 | | | 85-43 | 5512-11023 | 15 |
| | 3 | | | 171-85 | 2976-5952 | 17 |
| | | | | 0 - 60 | | 3.0 |
| | | 0-0,8 | | sl./min. | | 2 x 3,0 |



Operation voltage
460 V

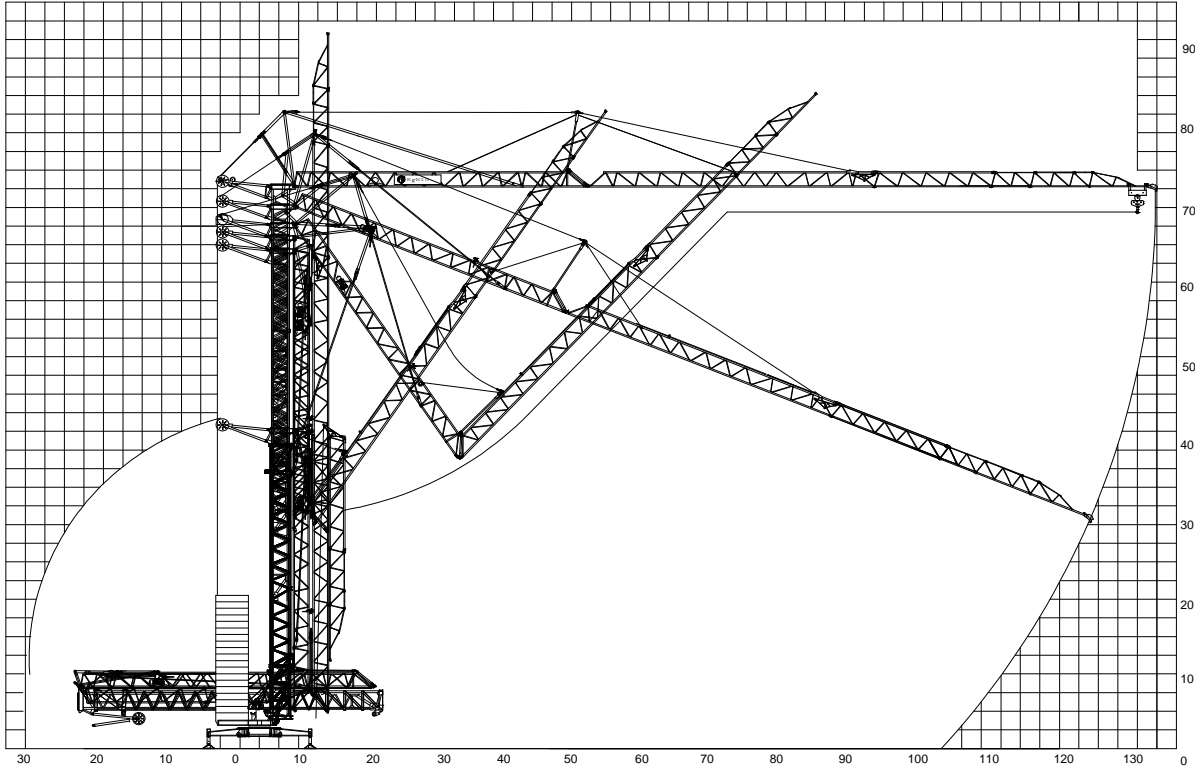
Frequency
60 Hz

Power requirement
20,8 kVA (26 KW)

Generator Requirement
60 KVA

K 45 T Technical data

Erection



Weight

| | | | |
|---------------------|--|--------------------------|-----------|
| Dead weight approx. | 18.6 Tons | Transport weight approx. | 21.2 Tons |
| Counterweight | R=8' 10" 77620 Lbs R=11' 5" 62000 Lbs | | |



Bringing Innovation To Construction

Phone: 877-852-2192 Fax: 604-852-4421
 Email: info@koenigcranes.com Internet: www.koenigcranes.com
 All measurements and weights subject to alterations