

## Worldwide offices

### International

#### TADANO LTD.

International Division  
4-12, Kamezawa 2-chome  
Sumida-Ku, Tokyo 130-0014, Japan  
Phone: +81-3-3621-7750  
Fax: +81-3-3621-7785  
E-mail: tdnihq@tadano.co.jp

#### TADANO AMERICA CORPORATION

333 Northpark Central Drive, Suite Z  
Houston, Texas 77073, USA  
Phone: +1-281-869-0030  
Fax: +1-281-869-0040  
E-mail: sales@tadano-cranes.com

#### TADANO LTD. Middle East Representative Office

P.O.Box 18302, LOB15-323  
Jebel Ali Free Zone, Dubai, UAE  
Phone: +971-4-887-1353  
Fax: +971-4-887-1703  
E-mail: tadano@tadano.ae

#### TADANO LTD. Beijing Office

Jing Guang Centre, Room 2905, Hu Jia Lou  
Chao Yang Qu  
Beijing, China  
Phone: +86-10-6597-3210  
Fax: +86-10-6597-3220  
E-mail: beijing@tadano.co.jp

### Europe

#### TADANO FAUN GmbH

Faunberg 2  
91207 Lauf a. d. Pegnitz  
Germany  
Phone: +49-9123-955-0  
Fax: +49-9123-3085  
E-mail: info@tadanofaun.de

#### TADANO SOUTH CHINA CO. LTD.

Room 1803, 18/F Seaview Commercial  
Building 21-24 Connaught Road West  
Hong Kong, China  
Phone: +852-2544-9310  
Fax: +852-2541-5828  
E-mail: hiwa@tadanosc.com

#### TADANO Korea Co Ltd.

302, Koram Venture Town B/D, 907-1  
Daechi-Dong, Gangnam-Ku  
Seoul 135-280, Korea  
Phone: +82-2-714-1600  
Fax: +82-2-3274-1304  
E-mail: tadano@korea.com

#### TADANO Asia Pte Ltd.

11 Tuas View Crescent  
Multico Building  
Singapore 637643  
Phone: +65-6863-6901  
Fax: +65-6863-6902  
E-mail: Tdn-crane@tadanoasia.com

#### TAIWAN TADANO LTD.

4F, No.50, Sung Chiang Road  
Taipei  
Taiwan  
Phone: +886-2-2523-1388  
Fax: +886-2-2523-3988

#### TADANO FAUN HOLLAND B.V.

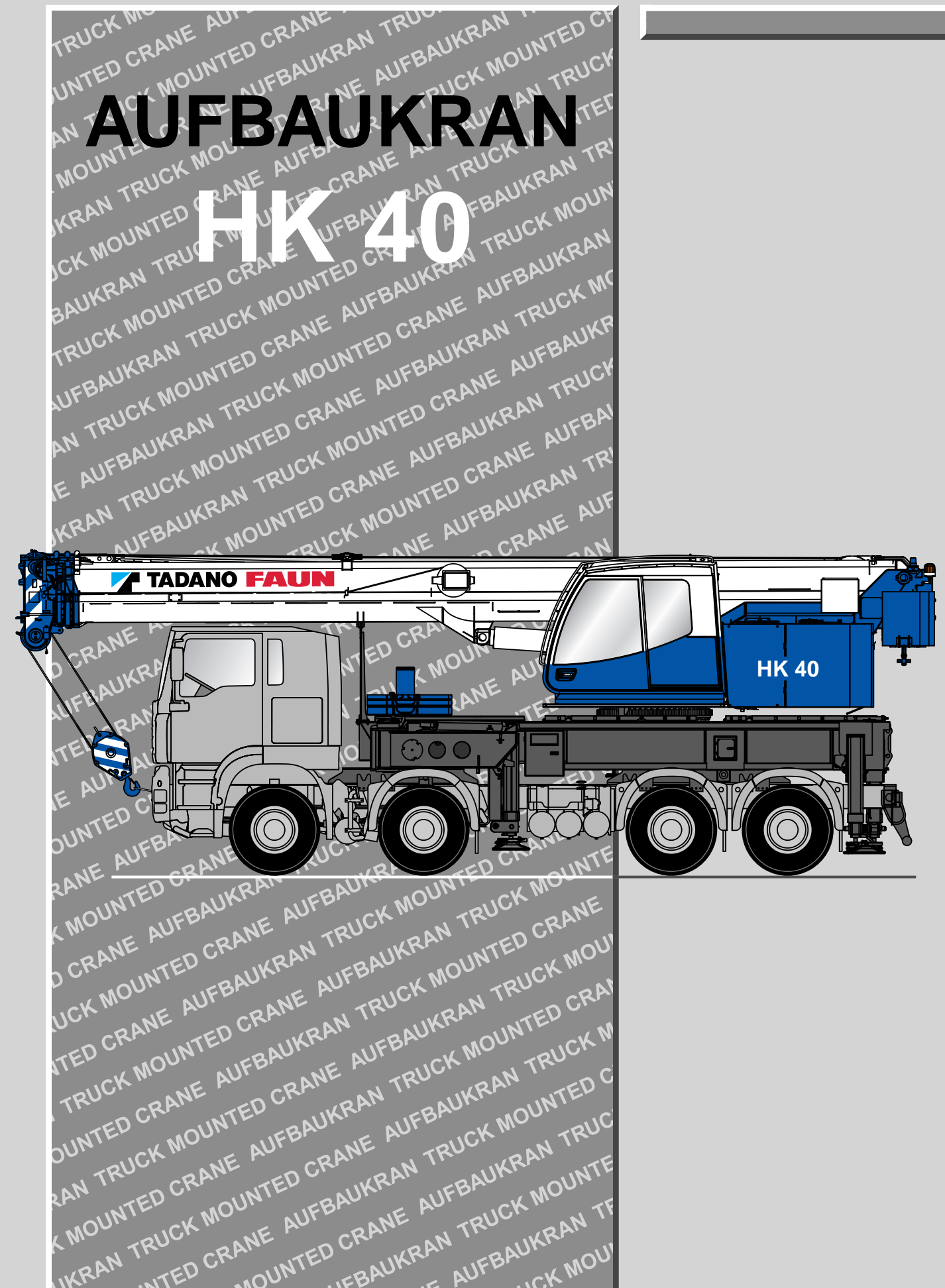
Antennestraat 6  
3903 LZ Veenendaal  
The Netherlands  
Phone: +31-318-546-700  
Fax: +31-318-542-282  
E-mail: info@tadano-faun.nl

Detaillierte Informationen über unsere Internationalen Händler und Service Niederlassungen finden Sie im Internet.  
For detailed information about our International Distributor and Service network, please refer to our homepages.

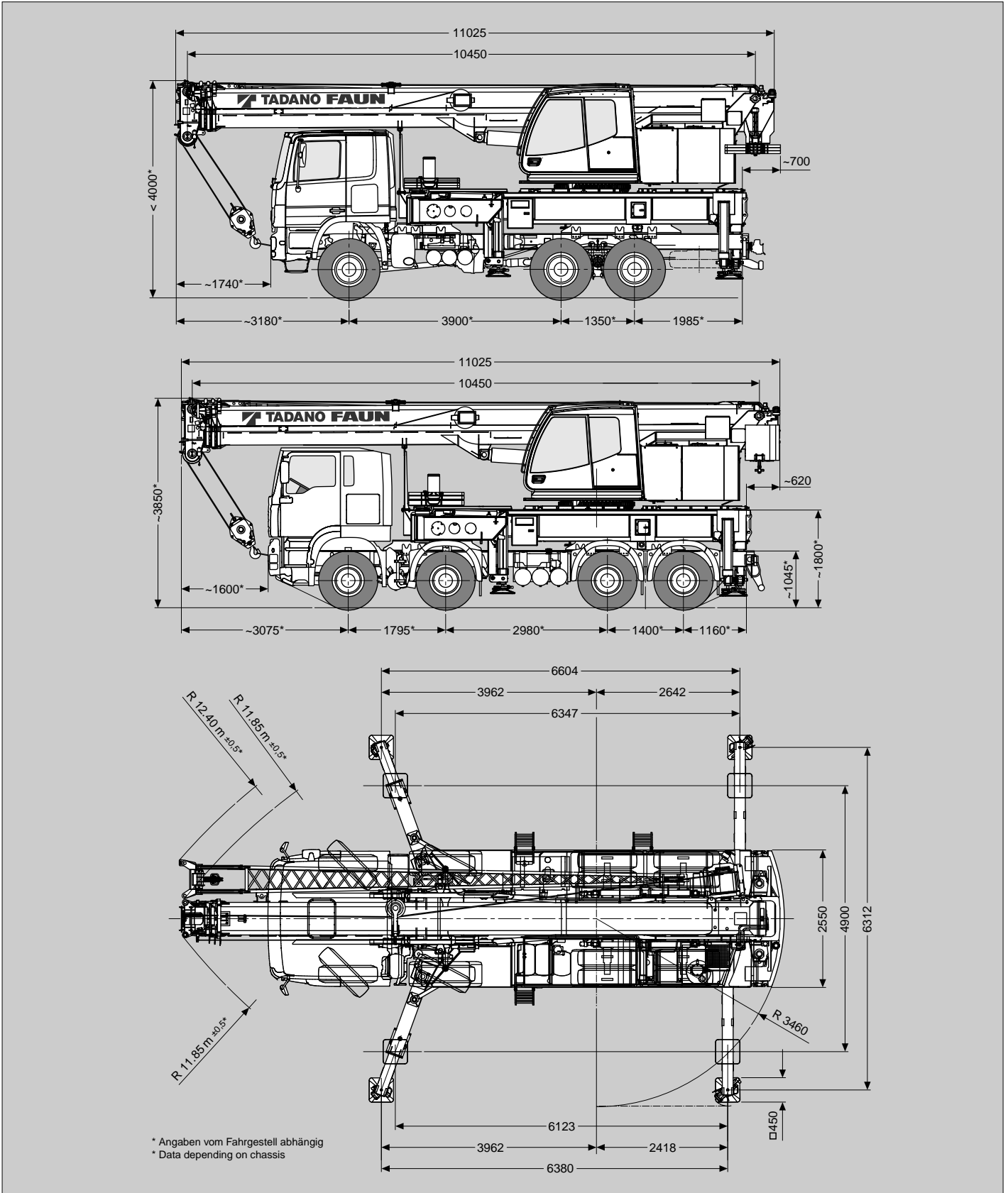
[www.tadano.co.jp](http://www.tadano.co.jp) + [www.tadanofaun.de](http://www.tadanofaun.de) + [www.tadanoamerica.com](http://www.tadanoamerica.com)

Herausgeber / Publisher:

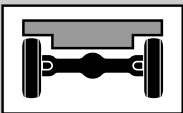

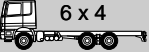
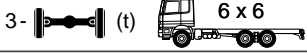
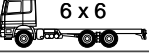
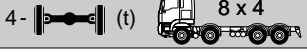

TADANO FAUN GmbH  
P.O.Box 10 02 64  
91205 Lauf  
Germany



Maße (mm)  
Dimensions (mm)



## Gewichte / Geschwindigkeiten Weights / Working speeds

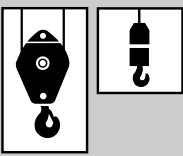
	Achse / Axle	1	2	3	4	Gesamtgewicht / Total weight
	 3- (t) 	9.0	9.5	9.5	-	26.0**
	 3- (t) 	9.0	12.0	12.0	-	32.0*
	 4- (t) 	8.0	8.0	9.5	9.5	32.0*

\* Abhängig vom Fahrgestell und Optionen, incl. 4,5 t Gegengewicht, 9 m Auslegerverlängerung, 10 t Unterflasche, 4 t Hakengeschirr.






\* Depending on chassis and options, incl. 4.5 t counterweight, 9 m boom extension, 10 t hook block, 4 t swivel hook.


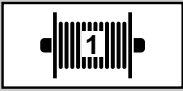

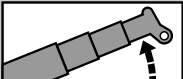

\*\* Abhängig vom Fahrgestell und Optionen, incl. 9 m Auslegerverlängerung.

\*\* Depending on chassis and options, incl. 9 m boom extension.

	Traglast / Lifting capacity	Rollen / Sheaves	Stränge / Parts of line	Gewicht / Weight
	40 t	6	13	350 kg
	32 t	5	11	280 kg
	20 t	3	7	200 kg
	10 t	1	3	150 kg
	4 t	-	1	75 kg




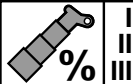
								
km/h 	Alle diese Daten abhängig vom Fahrgestell This data depending on chassis							
km/h 								
								

V+ 	Stufenlos Infinitely variable	Seil Rope	Max. Seilzug Max. single line pull
	0 - 135 m/min für einfachen Strang single line	14 mm / 150 m	33 kN
	0 - 2 min <sup>-1</sup>		
	-0.5° - +79° ca. 35 s approx. 35 s		
	10.5 m - 35.2 m ca. 105 s approx. 105 s		

## Tragfähigkeiten am Teleskopausleger Lifting capacities on telescopic boom



DIN/ISO/EN

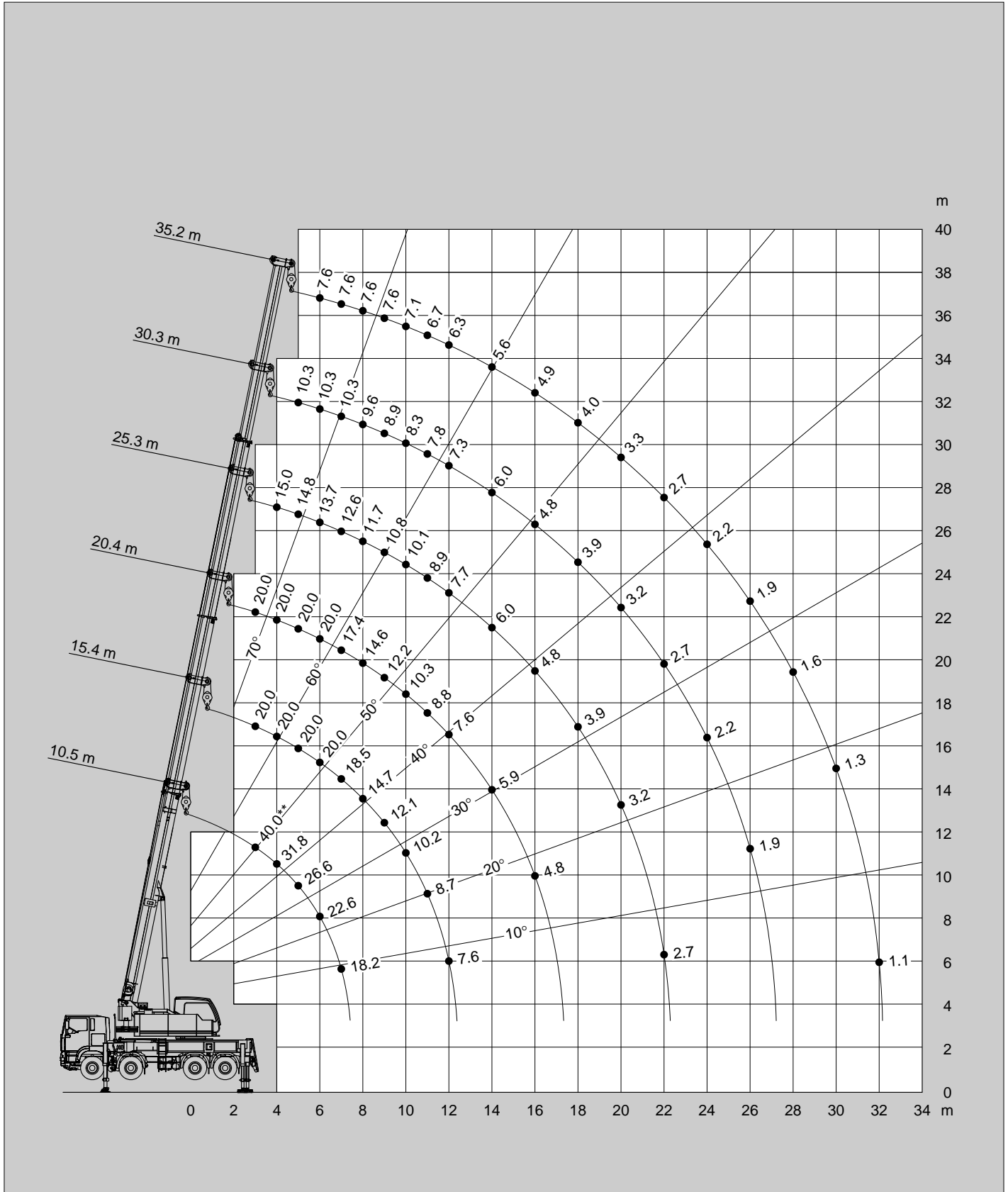
 m	10.5 m*	10.5 m	15.4 m	20.4 m	25.3 m	30.3 m	32.7 m	35.2 m	
3.0	40.0**	35.0**	20.0	20.0	15.0				
3.5	35.1**	31.6	20.0	20.0	15.0				
4.0	31.8	29.0	20.0	20.0	15.0				
4.5	29.0	26.8	20.0	20.0	15.0	10.3			
5.0	26.6	24.5	20.0	20.0	14.8	10.3			
6.0	22.6	21.0	20.0	20.0	13.7	10.3	8.9	7.6	
7.0	18.2	18.2	18.5	17.4	12.6	10.3	8.9	7.6	
8.0			14.7	14.6	11.7	9.6	8.8	7.6	
9.0			12.1	12.2	10.8	8.9	8.2	7.6	
10.0			10.2	10.3	10.1	8.3	7.6	7.1	
11.0			8.7	8.8	8.9	7.8	7.2	6.7	
12.0			7.6	7.6	7.7	7.3	6.7	6.3	
14.0				5.9	6.0	6.0	6.0	5.6	
16.0				4.8	4.8	4.8	4.9	4.9	
18.0					3.9	3.9	4.0	4.0	
20.0					3.2	3.2	3.3	3.3	
22.0					2.7	2.7	2.7	2.7	
24.0						2.2	2.2	2.2	
26.0						1.9	1.9	1.9	
28.0							1.6	1.6	
30.0								1.3	
32.0								1.1	
 %	I	0	0	20	40	60	80	90	100
	II	0	0	20	40	60	80	90	100
	III	0	0	20	40	60	80	90	100

\* Nach hinten / \* Over rear

\*\* Mit Zusatzhubausrüstung / \*\* With additional lifting equipment



DIN/ISO/EN

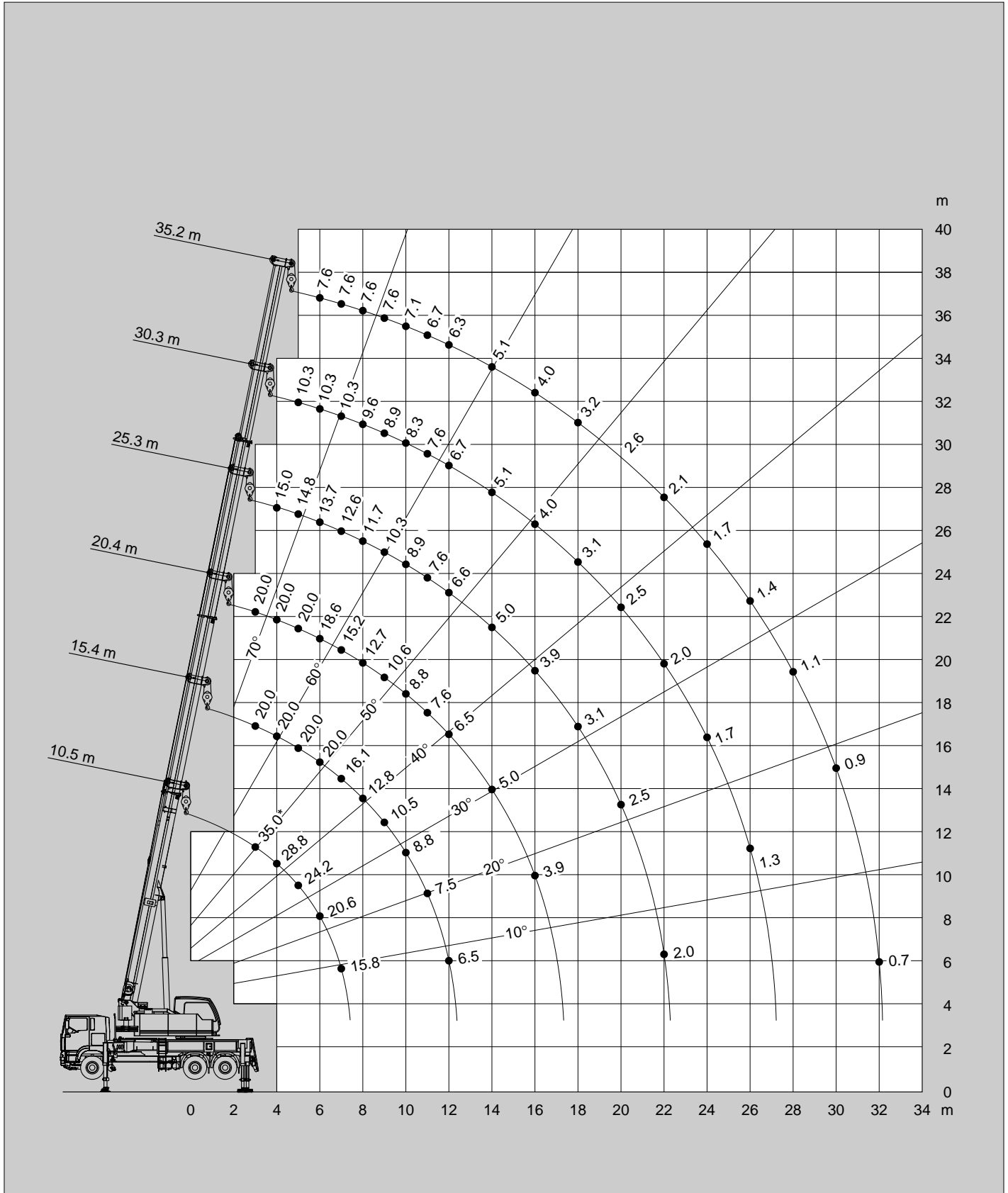


\*\* Mit Zusatzhubausrüstung / \*\* With additional lifting equipment

Hubhöhen  
Lifting heights



DIN/ISO/EN




\* Mit Zusatzhubausrüstung / \* With additional lifting equipment

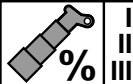
## Tragfähigkeiten am Teleskopausleger Lifting capacities on telescopic boom



DIN/ISO/EN

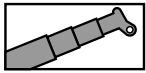
 m	10.5 m	15.4 m	20.4 m	25.3 m	30.3 m	32.7 m	35.2 m
3.0	35.0*	20.0	20.0	15.0			
3.5	31.5	20.0	20.0	15.0			
4.0	28.8	20.0	20.0	15.0			
4.5	26.4	20.0	20.0	15.0	10.3		
5.0	24.2	20.0	20.0	14.8	10.3		
6.0	20.6	20.0	18.6	13.7	10.3	8.9	7.6
7.0	15.8	16.1	15.2	12.6	10.3	8.9	7.6
8.0		12.8	12.7	11.7	9.6	8.8	7.6
9.0		10.5	10.6	10.3	8.9	8.2	7.6
10.0		8.8	8.8	8.9	8.3	7.6	7.1
11.0		7.5	7.6	7.6	7.6	7.2	6.7
12.0		6.5	6.5	6.6	6.7	6.6	6.3
14.0			5.0	5.0	5.1	5.1	5.1
16.0			3.9	3.9	4.0	4.0	4.0
18.0				3.1	3.1	3.2	3.2
20.0				2.5	2.5	2.6	2.6
22.0				2.0	2.0	2.1	2.1
24.0					1.7	1.7	1.7
26.0					1.3	1.4	1.4
28.0						1.1	1.1
30.0							0.9
32.0							0.7

 %	I	II	III	IV	V	VI	VII	VIII
I	0	20	40	60	80	90	100	
II	0	20	40	60	80	90	100	
III	0	20	40	60	80	90	100	

\* Mit Zusatzhubausrüstung / \* With additional lifting equipment


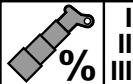
## Tragfähigkeiten am Teleskopausleger Lifting capacities on telescopic boom



1.4 t



DIN/ISO/EN

 m	10.5 m	15.4 m	20.4 m	25.3 m	30.3 m	32.7 m	35.2 m	
3.0	35.0*	20.0	20.0	15.0				
3.5	31.1	20.0	20.0	15.0				
4.0	28.3	20.0	20.0	15.0				
4.5	26.1	20.0	20.0	15.0	10.3			
5.0	23.5	20.0	20.0	14.8	10.3			
6.0	19.2	19.4	17.8	13.7	10.3	8.9	7.6	
7.0	15.1	15.4	14.5	12.6	10.3	8.9	7.6	
8.0		12.2	12.2	11.5	9.6	8.8	7.6	
9.0		10.0	10.1	9.9	8.9	8.2	7.6	
10.0		8.4	8.4	8.5	8.2	7.6	7.1	
11.0		7.1	7.2	7.3	7.2	7.0	6.7	
12.0		6.1	6.2	6.2	6.3	6.2	6.1	
14.0			4.6	4.7	4.8	4.8	4.8	
16.0			3.6	3.6	3.7	3.7	3.7	
18.0				2.9	2.9	2.9	2.9	
20.0				2.3	2.3	2.3	2.4	
22.0				1.9	1.9	1.9	1.9	
24.0					1.5	1.5	1.5	
26.0					1.2	1.2	1.2	
28.0						0.9	0.9	
30.0							0.7	
32.0							0.6	
 %	I	0	20	40	60	80	90	100
	II	0	20	40	60	80	90	100
	III	0	20	40	60	80	90	100

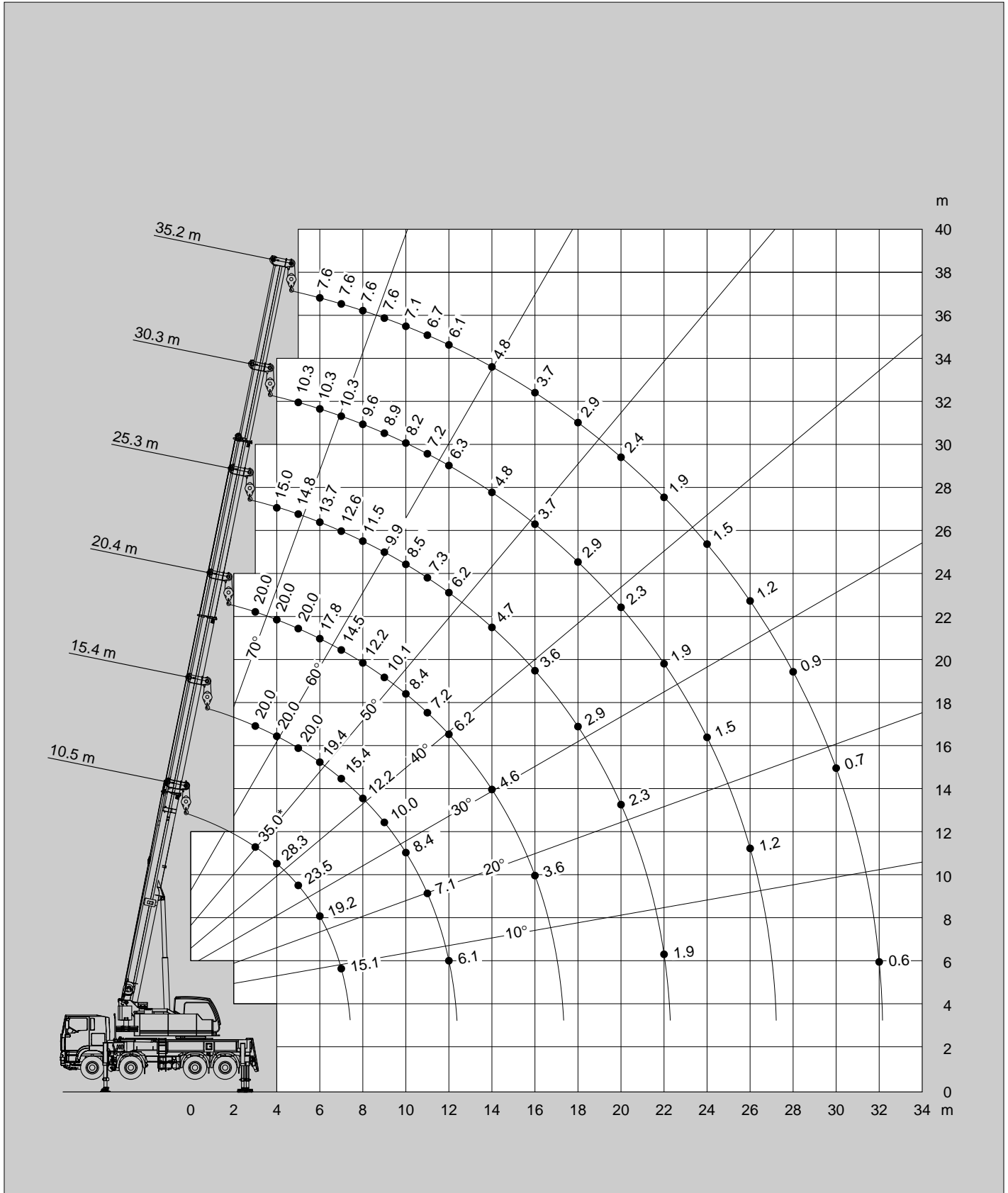
\* Mit Zusatzhubausrüstung / \* With additional lifting equipment



Hubhöhen  
Lifting heights

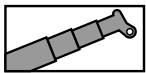


DIN/ISO/EN




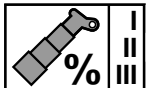
\* Mit Zusatzhubausrüstung / \* With additional lifting equipment

## Tragfähigkeiten am Teleskopausleger Lifting capacities on telescopic boom



DIN/ISO/EN

 m	10.5 m	15.4 m	20.4 m	25.3 m	30.3 m	32.7 m	35.2 m
3.0	34.0*	20.0	20.0	15.0			
3.5	31.0	20.0	20.0	15.0			
4.0	28.8	20.0	20.0	15.0			
4.5	26.1	20.0	20.0	15.0	10.3		
5.0	23.4	20.0	20.0	14.8	10.3		
6.0	19.0	17.8	16.3	13.7	10.3	8.9	7.6
7.0	14.2	14.3	13.3	12.4	10.3	8.9	7.6
8.0		11.5	11.1	10.5	9.6	8.8	7.6
9.0		9.4	9.4	8.9	8.4	8.2	7.6
10.0		7.8	7.9	7.6	7.3	7.1	6.9
11.0		6.6	6.6	6.6	6.3	6.2	6.1
12.0		5.6	5.7	5.7	5.6	5.5	5.4
14.0			4.2	4.3	4.3	4.3	4.2
16.0			3.3	3.3	3.3	3.4	3.4
18.0				2.6	2.6	2.6	2.6
20.0				2.0	2.1	2.1	2.1
22.0				1.6	1.6	1.6	1.6
24.0					1.3	1.3	1.3
26.0					1.0	1.0	1.0
28.0						0.7	0.7
30.0							0.5



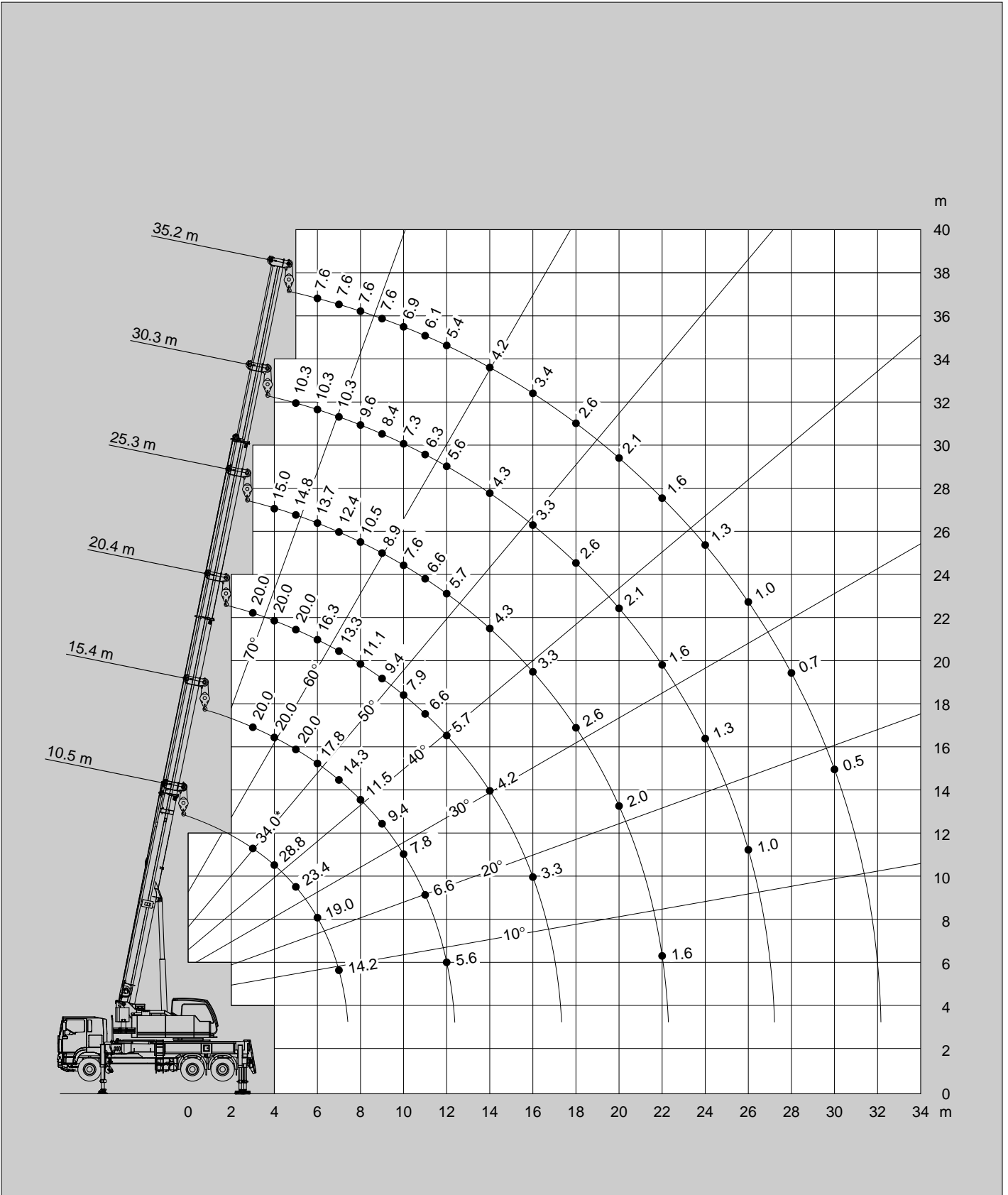
I	0	20	40	60	80	90	100
II	0	20	40	60	80	90	100
III	0	20	40	60	80	90	100

\* Mit Zusatzhubausrüstung / \* With additional lifting equipment

Hubhöhen  
Lifting heights

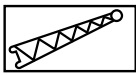
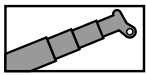


DIN/ISO/EN



\* Mit Zusatzhubausrüstung / \* With additional lifting equipment

## Tragfähigkeiten am Teleskopausleger Lifting capacities on telescopic boom



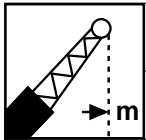
4.5t



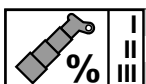
+



DIN/ISO/EN



m	10.5 m + 9.0 m			30.3 m + 9.0 m			35.2 m + 9.0 m		
	0°	20°	40°	0°	20°	40°	0°	20°	40°
3.0	6.5								
3.5	6.5								
4.0	6.5	6.5							
4.5	6.5	6.5							
5.0	6.5	6.4							
6.0	6.5	6.0		5.1					
7.0	6.5	5.6	4.7	5.1					
8.0	6.4	5.4	4.5	5.1			4.0		
9.0	6.0	5.1	4.4	5.1	4.6		4.0		
10.0	5.6	4.9	4.2	5.1	4.4		4.0		
11.0	5.3	4.6	4.1	4.9	4.2		4.0	3.7	
12.0	5.0	4.4	4.0	4.7	4.1	3.8	4.0	3.5	
14.0	4.6	4.1	3.9	4.3	3.8	3.5	3.7	3.3	3.1
16.0	4.2	4.0		4.0	3.6	3.3	3.4	3.1	2.9
18.0				3.7	3.4	3.2	3.2	2.9	2.8
20.0				3.4	3.2	3.0	2.9	2.8	2.6
22.0				2.9	3.0	2.9	2.7	2.6	2.5
24.0				2.4	2.6	2.7	2.4	2.5	2.4
26.0				2.0	2.2	2.3	2.0	2.2	2.3
28.0				1.7	1.8	1.9	1.7	1.8	1.9
30.0				1.4	1.5	1.6	1.4	1.5	1.6
32.0				1.2	1.3		1.2	1.3	1.3
34.0				1.0	1.0		1.0	1.0	1.1
36.0				0.8			0.8	0.8	
38.0							0.6	0.7	
40.0							0.5	0.5	

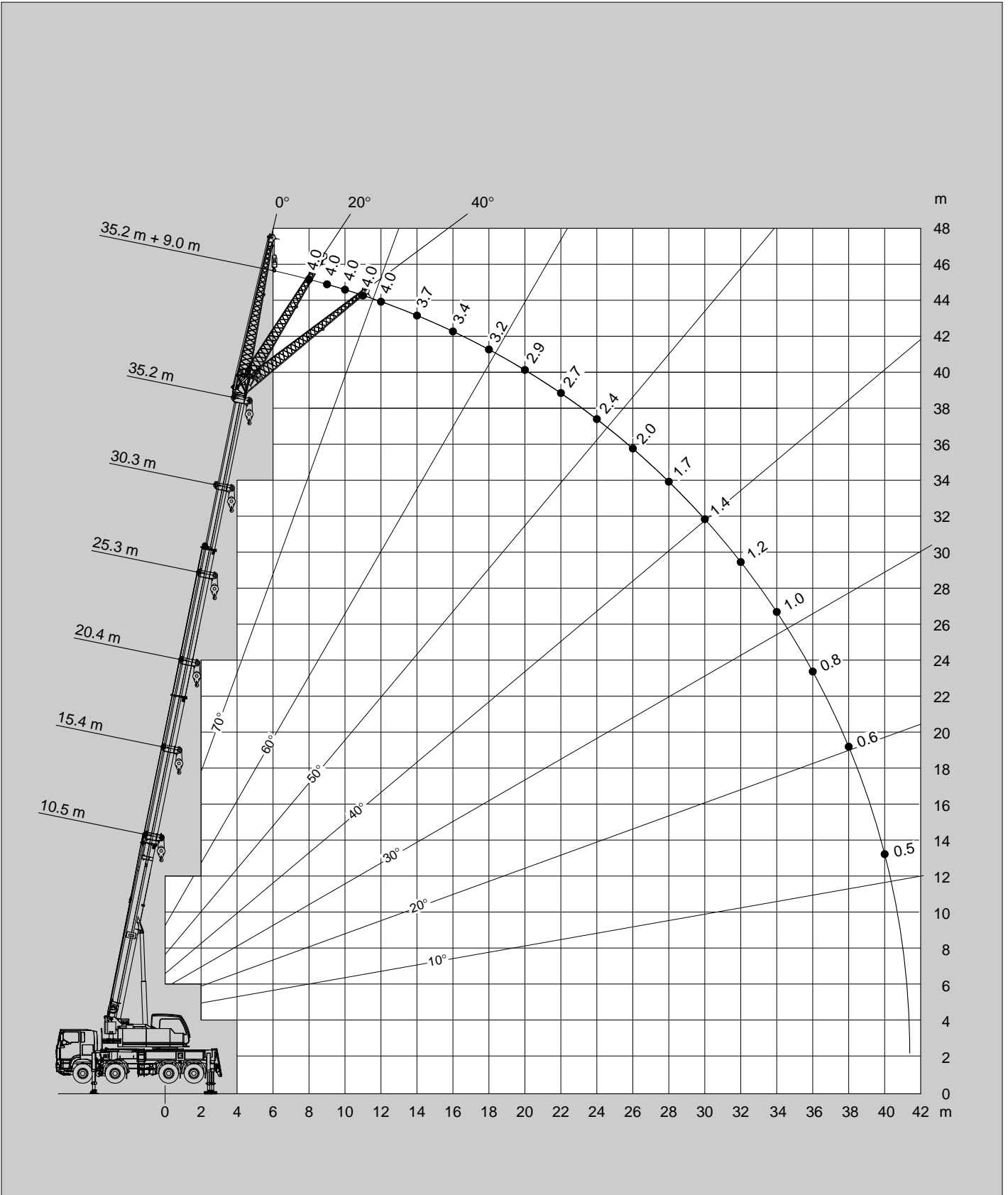


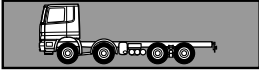
I	0	80	100
II	0	80	100
III	0	80	100

Hubhöhen  
Lifting heights

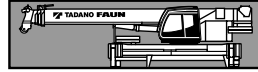


DIN/ISO/EN





**Fahrgestell** 3 oder 4-achsiges handelsübliches MAN oder Mercedes-Benz-Fahrgestell.  
Andere Fahrgestelle auf Anfrage.



**Hauptrahmen** Verwindungs- und biegesteife Schweißkonstruktion aus hochfestem Feinkornstahl mit einer außenverzahnten, einreihigen Kugeldrehverbindung, um 360° unbegrenzt drehbar.

**Abstützung** Hydraulische, teleskopierbare 4-Punkt-Abstützung vorne schwenkbar, Bedienungsmöglichkeiten an beiden Seiten des Fahrgestelles und in der Oberwagenkabine.  
Abstützbasis 6,31 m (und 4,90 m) x 6,49 m (und 6,20 m).

**Motor** Mercedes-Benz 4-Zylinder-Dieselmotor OM 904 LA, wassergekühlt. Drehzahl über Fußpedal stufenlos regelbar, Leistung 88 kW (118 PS) bei 2000 min<sup>-1</sup>.  
Drehmoment 470 Nm (48 kpm) bei 1200 min<sup>-1</sup>.  
Motorleistung nach 80/1269/EWG und DIN 6270B/DIN 6271.  
Kraftstoffbehälter 150 l.

**Hydraulik System** Diesel-hydraulisch mit 3-Kreis-Hydraulik, 1 leistungsgeregelte Axialkolbendoppelpumpe (hydraulisch verstellbar) und 1 Zahnrad-Doppelpumpe.

**Steuerung** Zwei 4-fach Kreuzsteuerhebel mit hydraulischer Vorsteuerung.

**Teleskopausleger** Vierteiliger Teleskopausleger aus hochfestem Feinkornstahl, bestehend aus einem Grundausleger und 3 Teleskopteilen, hydraulisch unter Teillast teleskopierbar.  
10,5 m - 35,2 m lang.

**Wippwerk** Differentialzylinder mit angebautem Senkbremssperrventil.

**Hubwerk** Axialkolben-Motor, Hubwerkstrommel mit eingebautem Planetengetriebe und federbelasteter Hydro-Lamellenbremse mit integriertem Freilauf beim Heben.  
Hubseil mit 'Super-Stop' Einrichtung.

**Drehwerk** Axialkolben-Motor, dreistufiges Planetengetriebe mit fußbetätigter Betriebsbremse und Feststellung.  
Drehgeschwindigkeit stufenlos von 0 - 2 min<sup>-1</sup>.

**Gegengewicht** Standard 4,5 t teilbar.  
Die Bedienung erfolgt aus der Oberwagenkabine.

**Oberwagenkabine** Großräumige Krankabine in Stahl-Kunststoffausführung mit Sicherheitsverglasung mit getönten Scheiben, verstellbarem hydraulisch gedämpftem Fahrersitz, motorunabhängige Warmwasserheizung, Kontroll- und Bedienungselemente für Kranbetrieb, Betätigung der Abstützylinder vom Oberwagen.

**Elektrische Anlage** 24 V Gleichstrom, 2 Batterien.

**Sicherheitseinrichtungen** Lastmomentbegrenzung (LMB), Hubendschalter, Windenendschalter, Seilwindendrehmelder, Sicherheitsventile gegen Rohr- und Schlauchbrüche.  
Sperrventile an Hydraulik-Zylindern.

**Zusatzrüstung** (gegen Mehrpreis)  
Auslegerverlängerung 9 m, abwinkelbar 0°, 20° und 40°,  
4 t Hakengeschirr, verschiedene Unterflaschen,  
Motorvorwärmung, Klimaanlage, Sonderlackierung und Beschriftung.

Weitere Zusatzrüstung auf Anfrage.

## Anmerkungen zu den Traglasttabellen

Die Tragfähigkeiten im Festigkeitsbereich basieren auf DIN 15018 Blatt 2 und Blatt 3 und F.E.M.

Die Tragfähigkeiten im Standsicherheitsbereich entsprechen DIN 15019 Teil 2 / ISO 4305 / EN 13000.

Die zulässige Windgeschwindigkeit beträgt maximal 15 m/sec.

Die Tragfähigkeiten sind in metrischen Tonnen angegeben.

Das Gewicht des Lasthakens bzw. der Hakenflasche und weiterer Anschlagmittel ist von der Tragfähigkeit abzuziehen.

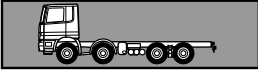
Die Tragfähigkeiten für den Teleskopausleger gelten nur bei demontierter Spitze.

Die Ausladung ist der horizontale Abstand von Mitte Drehkranz bis Mitte freihängender, nicht schwingender Last.

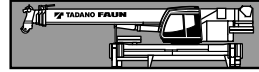
Tragfähigkeitsänderungen vorbehalten.

Obige Angaben dienen nur zur Information.

Die Bedienungsanleitungen müssen zu Rate gezogen werden, bevor die Maschine in Betrieb genommen wird. Alle hier gemachten Angaben beziehen sich auf die Standard-Ausführung.  
Jegliche Ausrüstungsveränderungen können die angegebenen Werte beeinflussen.



**Chassis** 3 or 4 axle MAN or Mercedes-Benz chassis. Other chassis on request.



**Main frame** Torsion-resistant, welded construction made from high strength, fine-grained steel. Connected to carrier by single-row ball-bearing slewing ring with external gearing for 360° continuous rotation.

**Outriggers** Hydraulically extendable 4 point outriggers front slewable with controls on both sides of carrier and in superstructure cab. Outrigger base 6.31 m (4.90 m mid extension) x 6.49 m (and 6.20 m).

**Superstructure engine** Mercedes-Benz 4 cylinder model OM 904 LA, water cooled, diesel engine. Engine speed infinitely controlled via pedal. Rated at 88 kW (118 HP) at 2000 min<sup>-1</sup>. Torque 470 Nm (48 kpm) at 1200 min<sup>-1</sup>. Engine rating according to 80 / 1269 / EWG and DIN 6270B / DIN 6271. Fuel tank 150 l.

**Hydraulic system** Three circuit diesel hydraulic system with 1 power controlled axial piston double pump (hydraulically adjustable) and 1 double gear pump.

**Controls** Hydraulic, 2 joy-stick levers for simultaneous and independent operation of 4 crane motions.

**Telescopic boom** 4 sections, made of high tensile, fine-grained steel, consisting of 1 base section and 3 telescoping sections. All telescope sections extendable under partial load. 10.5 m to 35.2 m long.

**Derricking system** 1 double acting hydraulic cylinder with integral brake and holding valve.

**Main winch** Axial piston motor, winch drum with integrated planetary reduction and with hydraulically controlled spring-loaded, multiple disc brake and with integrated free rotation (no sagging of load when hoisting). Hoist cable with 'Super-Stop' easy reeving system.

**Slewing system** Axial piston motor with two-stage planetary reduction with a foot actuated service and a parking brake. Speed infinitely variable 0 - 2 min<sup>-1</sup>.

**Counterweight** Standard 4.5 t divisible, assembled and disassembled by hydraulic cylinders controlled from superstructure cab.

**Superstructure cab** Spacious panoramic cab of composite structure with safety (tinted) glass windows with hydraulically cushioned adjustable seat, engine independent hot-water heater, complete controls and instrumentation for crane operation, outrigger cylinders controlled from superstructure cab.

**Electrical system** 24 volt DC system, 2 batteries.

**Safety devices** Load moment device (LMD), hoist limit switch, lower limit switch, drum turn indicator, safety valves against pipe and hose rupture. Holding valves on hydraulic cylinders.

**Optional Equipment** (at extra charge)  
 Boom extension 9 m long, offsets 0°, 20° and 40°,  
 4 t swivel hook, selection of hook blocks, engine pre-heat, air conditioning, special painting and lettering.

Further optional equipment available upon request.

## Remarks concerning the load charts

*The lifting capacities in the structural area are based on DIN 15018 parts 2 and 3 and F.E.M.*

*The lifting capacities in the stability area are based on DIN 15019 part 2 / ISO 4305 / EN 13000.*

*The maximum permissible wind speed for crane operation is 15 m/sec.*

*The lifting capacities shown are in metric tons.*



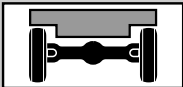






*The weight of load handling devices such as hook blocks, slings, etc., must be considered as part of the load and must be deducted from the lifting capacities.*

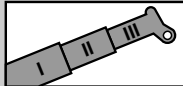
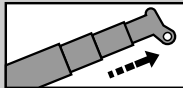
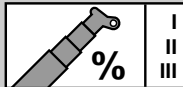
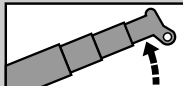

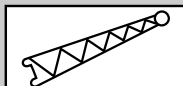
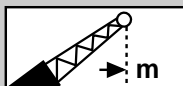


*The lifting capacities for the telescopic boom apply to a crane with no boom extensions being stowed or mounted on the crane.*

*The working radius is the horizontal distance from the centre of rotation to the centre of the freely suspended non-oscillating load.*

*The lifting capacities are subject to change without prior notice.*

*The above remarks are for basic information only and the operator's manual must be consulted before operating this crane. All data and performances refer to the standard crane. The addition of optional and other equipment may affect the performance of the crane.*

<b>DIN / ISO</b>	Siehe Seite 14 As on Page 15
	Abstützung Outriggers
	Getriebe / Gang Transmission / Gear
	Achslast Axle load
	Achsen / Anzahl Axles / Number
	Räder / Größe Tyres / Size
	Gelände Off road
	Straße On road
<b>V+</b>	Geschwindigkeiten Speeds
	Steigfähigkeit Gradeability
	Drehwerk Slewing system

<b>4.5t</b>	Gegengewicht Counterweight
	Teleskopausleger Telescopic boom
	Teleskopieren Boom telescoping
	Teleskopieren in % Boom telescoping in %
	Wippwerk Derricking system
	Ausladung Radius
	Auslegerverlängerung Boom extension
	Ausladung Radius
	Hubwerk Main winch
	Unterflasche / Hakengeschirr Hook block / Swivel hook