



model 555



product guide

features

- 136 mton (150 ton) Capacity
- 539 mton-m (3,900 ft-kips) Maximum Load Moment
- 76,2 m (250') Heavy-Lift Boom
- 85,3 m (280') Fixed Jib on Heavy-Lift Boom
- 100,6 m (330') Luffing Jib
- 118,9 m (390') Fixed Jib on Luffing Jib
- 253 kW (340 HP) engine
- EPIC® controls with Can-Bus® technology
- 130 m/min (425 fpm) line speed standard
- 147 kN (33,000 lb) line pull standard
- 11,300 kg (25,000 lb) Clamshell capacity
- Fast, efficient self-assembly and disassembly – ships on only 8 trucks
- All modules meet US weight and European width requirements
- Manitowoc Crane CARE comprehensive support

contents

Specifications	3
Outline Dimensions	6
Transport Data	12
Performance Data	14
Boom Combinations	20
Main Boom Range / Load Charts	23
Fixed Jib Range / Load Charts	27
Luffing Jib Range / Load Charts	30
Fixed Jib on Luffing Jib Range / Load Charts	34
Crane CARE	38



Upperworks



Engine

Cummins Model QSL T3 diesel, 6 cylinder, 253 kW (340 BHP) @ 1800 governed RPM.

Includes engine block heater, disconnect clutch for cold weather starting, high silencing muffler, hydraulic oil cooler, radiator and fan.

Multiple hydraulic pump drive transmission provides power for all machine functions.

Two 12 volt maintenance-free batteries, 1300 CCA at -18°C (0° F), 24 volt system and 100 amp alternator.

One diesel fuel tank, 586 l (155 gal.), with level indicator in operator's cab.

▶ Optional: Cold-weather package with heater for fluids, and computer display.



Controls

Modulating electronic-over-hydraulic controls provide infinite speed response directly proportional to control lever movement. Controls include Manitowoc's exclusive EPIC® *Electronically Processed Independent Control* system with CAN-BUS technology providing microprocessor driven control logic, pump control, on-board diagnostics, and service information.

Travel and swing alarms are standard.

Block-up limit control is standard for hoist and whip lines.

Integrated Load Moment Indicator system (LMI) is standard for main boom and upper boom point. "Function cut-out" or "warning only" operation is selected via a keyed switch on the LMI console.

▶ Optional: Anemometer (wind indicator).

▶ Optional: Foot control for travel.



Hydraulic System

Six high-pressure piston pumps, driven by a multi-pump transmission, provide independent closed-loop hydraulic power for the hoisting drums, boom hoist, swing, left crawler and right crawler.

Hydraulic reservoir capacity is 469 l (124 gal.) and is equipped with breather, clean out access, and internal diffuser.

Each function is equipped with relief valves to protect the hydraulic circuit from overload or shock.

System includes oil cooler and replaceable, full flow filter. All oil is filtered before entering the hydraulic pumps.

Hydraulic system also includes pump transmission disconnect and hydraulic oil cooler.



Drums

Two equal width drums, 676 mm (26-5/8") wide and 539 mm (21-1/4") diameter are driven by independent variable displacement axial piston hydraulic motors through planetary reduction mounted on separate front and rear shafts with anti-friction bearings. Drums are grooved for 28 mm wire rope.

Powered hoisting/lowering operation is standard with automatic (spring applied, hydraulically released) multi-disc brakes, and drum rotation indicators..

▶ Optional: free-fall operation for front and/or rear drum(s). Wet disc brake manually applies by foot pedal with locking latch in operator's cab. Operator may select free-fall or powered lowering mode using a selector switch.

▶ Optional: auxiliary (third) hydraulic powered drum rated 147 kN (33,000 lb) line pull mounted in boom butt. Includes third drum control system.

▶ Optional: auxiliary (third) hydraulic powered drum rated 89 kN (20,000 lb) line pull mounted in boom butt. Includes third drum control system.

▶ Optional: auxiliary drum preparation includes electric wiring, controls, hydraulic pump and plumbing.



Boom Hoist

Independent boom hoist consists of a 251 mm (9.9") wide and 483 mm (19") diameter drum lagged for 22 mm diameter wire rope. Includes 221 m (725') of 22mm wire rope for 16-part line reeving.

Drum is powered by a variable-displacement hydraulic motor coupled to an integral brake and planetary reduction gearbox. Ratcheting pawl and rotation indicator are standard.

Boom hoist speed: raise 76,2 m (250') full main boom from 0°- 82° in 1 minute, 55 seconds.



Swing System

specifications

High strength fabricated steel rotating bed is mounted on 2 146 mm (7'-1/2") diameter single-row ball bearing turntable.

4

Independent swing powered by one fixed displacement hydraulic motor coupled to a planetary reduction gearbox with internal brake.

Swing system maximum speed: 2.8 rpm.



Boom Support System

Moving Mast is 6,7 m (23') long and connects the boom hoist reeving to the steel boom suspension strap rigging. When used with the optional self-erect package, the mast is used for crane assembly and disassembly. It is capable of lifting and positioning the crawler assemblies, stacking the counterweights, and assembling the boom and jib.

Spring cushioned boom stop and automatic boom stop are standard.



Counterweight

Counterweight tray and counterweights for the upperworks is raised by a pair of cylinders and lifting chain. Counterweight attaches to the rotating bed with power actuated pins.

QTY.	ITEM	UNIT WEIGHT		TOTAL WEIGHT	
		kg	lb	kg	lb
1	Upperworks				
	Tray	7 801	17,200	7 801	17,200
4	Upper Box	6 123	13,500	24 492	54,000
	Pins, links, etc.	137	372	137	300
SERIES 1 TOTAL		32 430	71,500		
2	Upperworks				
	Upper Box	6 123	13,500	12 250	27,000
	Carbody				
2	Lower Box	9 980	22,000	19 960	44,000
Optional: Add to SERIES 1 for SERIES 2 TOTAL		65 640	142,500		



Vision Operator's Cab

Fully enclosed and insulated steel module mounted at left front corner of rotating bed on a pivoting frame that permits cab to be repositioned for transportation.

Module is equipped with sliding door, large safety glass windows on all sides and roof. Signal horn, cab space heater, front and roof windshield wipers, dome light, sun visor and shade, fire extinguisher, air conditioning, and radio are standard.

Optional: Nylon protective window covers.

Lowerworks



Carbody

Connects rotating bed to crawler assemblies. High strength fabricated steel assembly with FACT connection system for fast installation and removal of crawler assemblies.



Crawlers

Crawler assemblies are 7,24 m (23' 9") long with 1,22 m (48") wide cast steel crawler pads and sealed intermediate rollers. Each crawler is identical and can be mounted on either side of the carbody. Each crawler is powered independently by a variable displacement hydraulic motor and includes a hydraulically powered pin actuator for fast installation and removal from carbody. Carbody mounted drive motors are connected to crawler final reduction via drive shaft with guard. Crawlers provide ample tractive effort for counter rotation with full rated load.

Maximum ground speed of 1,8 kph (1.1 mph).

Optional: Self-erect system includes two sheaves for crawler, counterweight, and boom handling, jacking cylinders with pads, 27-mton (30-ton) assembly block, and crawler handling chains.

Attachments



No. 84 Heavy-Lift Boom

The liftcrane is equipped with 15,2 m (50') of No. 84 basic heavy-lift angle chord boom consisting of a 6,7 m (22') butt and 8,5 m (28") top with four 76,2 cm (30") diameter roller bearing sheaves on one shaft. Includes LMI hardware, rope guides, boom hoist wire rope, boom angle indicator, and 13,6 mton (15 ton) swivel hook and weight ball. The No. 84 boom utilizes steel suspension straps and Manitowoc's patented, exclusive FACT connection system.

Powered boom hinge system including cylinder, piping, operating controls, and locking device standard.

Luffing jib preparation included as standard.

Optional 3,0 m (10'), 6,1 m (20'), and 12,2 m (40') No. 84 boom inserts with steel boom suspension straps and FACT connection system.

Utilize main boom inserts in combination with No. 84

basic main boom for total length up to 76,2 m (250').

▶ Optional No. 84 detachable upper boom point with one 76,2 cm (30") diameter tapered roller bearing steel sheave grooved for 28 mm rope with rope guard for liftcrane.

▶ Optional open throat top No. 84 - 38' with FACT connection system.



No. 134 Fixed Jib

Optional No. 134 basic fixed jib 9,1 m (30') length consisting of 4,6 m (15') jib butt and 4,6 m (15') jib top with 3,7 m (12') jib strut, pendants, and backstay. Includes LMI hardware. For use with No. 84 boom.

▶ Optional No. 134 fixed jib inserts 3,0 m (10') and 6,1 m (20') with pendants.

Utilize fixed jib inserts in combination with the No. 134 basic fixed jib for total lengths of to 24,4 m (80').

Note: Jib lengths greater than 18,3 m (60') require the use of at least one 6,1 m (20') No. 134 fixed jib insert.



No. 155 Luffing Jib

▶ Optional 18,3 m (60') basic No. 155 luffing jib assembly with LMI hardware consisting of 8,2 m (27') jib butt, 3,0 m (10') insert, and 7,0 m (23') jib top with two 68,6 cm (27") straight roller bearing sheaves, boom cap with 5,6 m (18.5') fixed strut and 5,6 m (18.5') jib strut, pin connected boom sections, pendant rigging, backstay pendants, jib point wheel, and 28 mm luffing jib hoist line.

▶ Optional 3,0 m (10'), 6,1 m (20'), and 12,2 m (40') No. 155 luffing jib inserts with pendant suspension.

▶ Optional 12,2 m (40') insert with intermediate fall and pendant suspension.

Utilize luffing jib inserts in combination with the No. 155 basic luffing jib for total lengths up to 48,8 m (160').



No. 138A Fixed Jib Extension

▶ Optional 9,1 m (30') No. 138A basic fixed jib extension consisting of a 4,6 m (15') jib butt and 4,6 m (15') jib top with 5,4 m (18') jib strut, pendants, jib stop, backstay, wheel, and mounting parts. Includes LMI hardware. For use with No. 155 luffing jib.

▶ Optional No. 124 fixed jib 3,0 m (10') inserts with pendants.

Utilize fixed jib inserts in combination with the No. 138A basic fixed jib extension for a total length up to 18,3 m (60').

Optional Equipment

▶ Optional: Blocks and Hooks, each with roller-bearing sheaves for 28 mm wire rope, a roller-bearing swivel hook, a hook latch and a swivel lock.

▶ 13,6 mton (15 ton) swivel hook and weight ball

▶ 27,2 mton (30 ton) hook block with single roller bearing sheave and roller bearing swivel hook with hook latch and swivel lock (assembly block)

▶ 90,7 mton (100 ton) hook block with three roller bearing sheaves and roller bearing swivel hook with hook latch and swivel lock

▶ 136 mton (150 ton) hook block with four roller bearing sheaves and roller bearing swivel hook with hook latch and swivel lock

▶ Optional: Hydraulic Test Kit: required to properly analyze the performance of the EPIC® control system.

▶ Optional: Service Interval Kits for the regularly scheduled maintenance of general crane operations.

▶ Optional: Lighting Packages: consult dealer for available options.

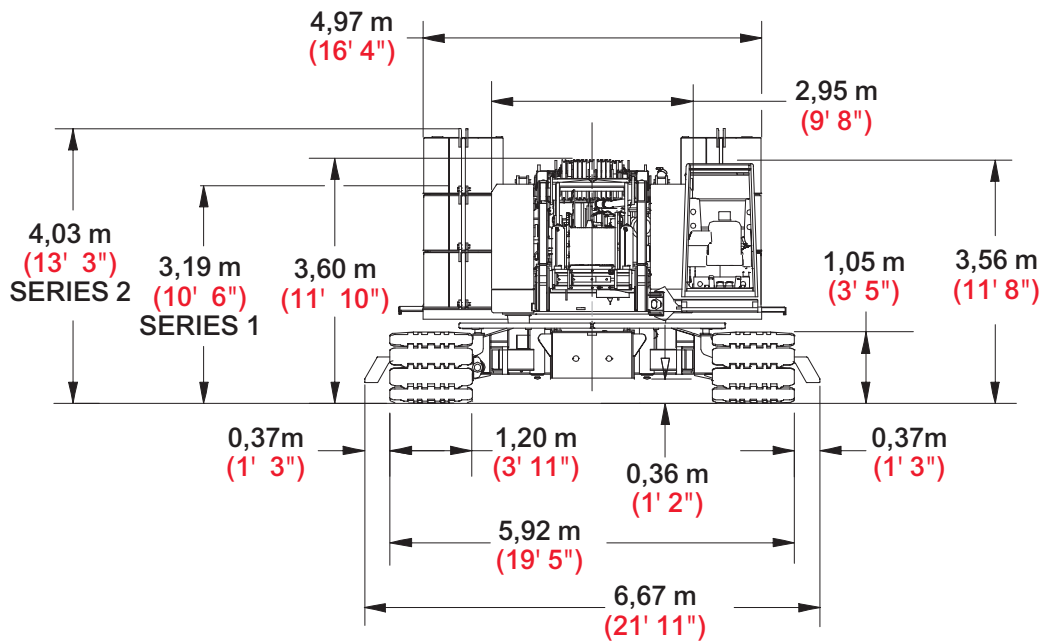
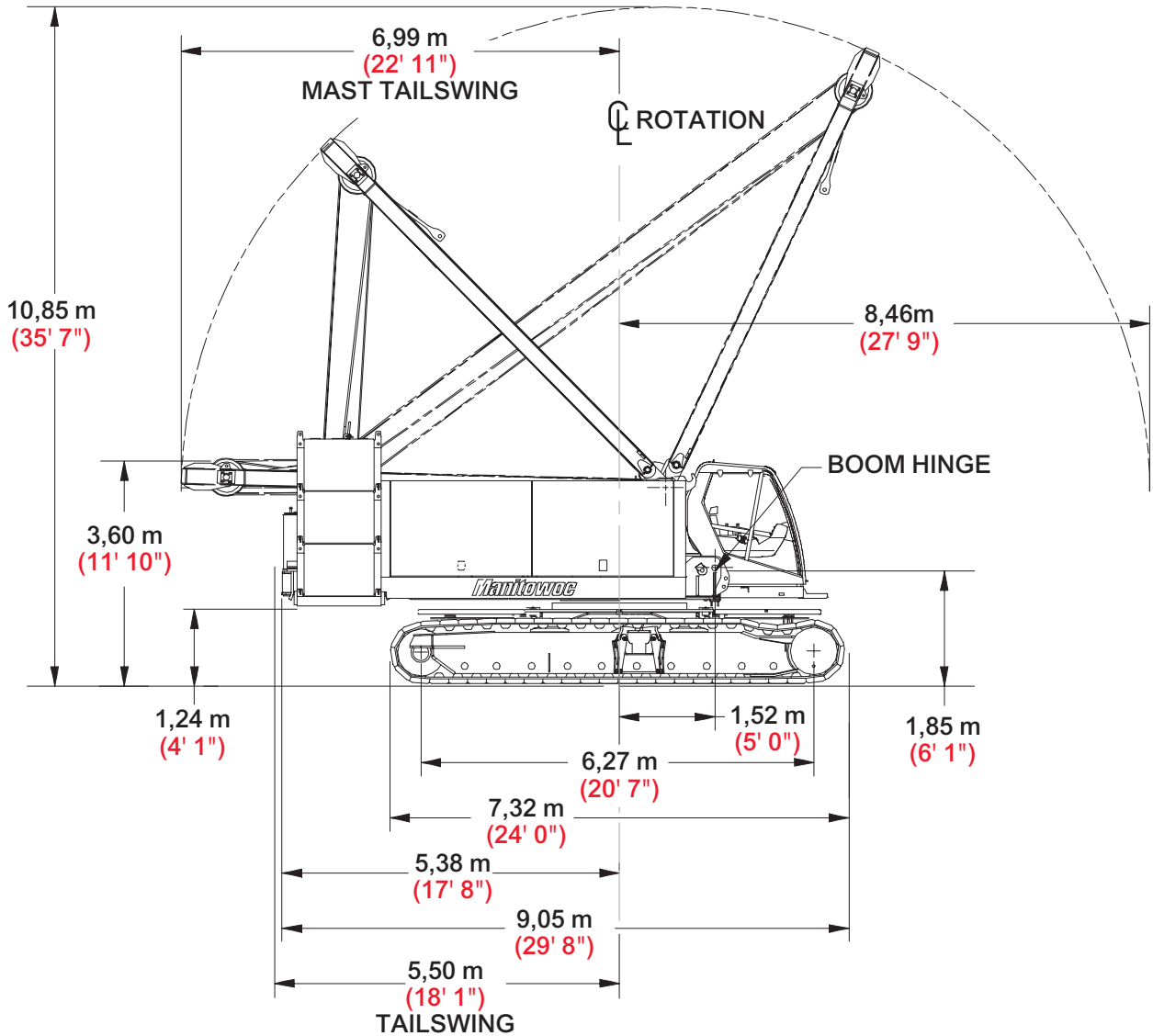
▶ Optional: Special Paint [color(s) other than Manitowoc standard red and black].

▶ Optional: Custom vinyl decal(s) of customer name and/or logo from artwork supplied by customer.

▶ Optional: Export Packaging: basic crane, boom and jib sections.

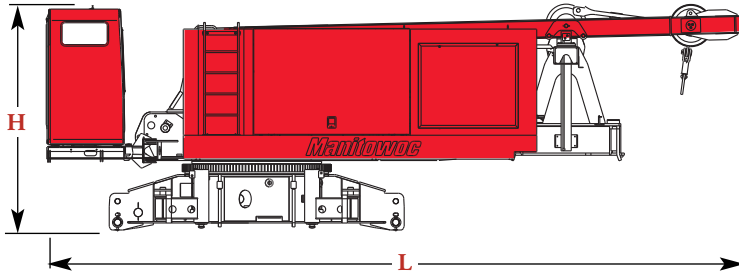
outline dimensions

6



outline dimensions

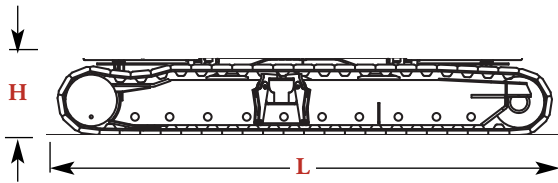
7



Basic Crane

Length	10,03 m	32' 11"
Width	3,00 m	9' 10"
Height	3,328 m	10' 9"
Weight	37 665 kg	83,140 lb

Note: Weight includes carbody, upperworks, operator's cab, mast, boom-hoist wire rope, maximum hoist and whip lines on drums, front counterweight, optional self-assembly jacks, full hydraulic fluid reservoir, and half tank of fuel.

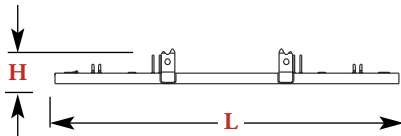


Crawlers

x 2

Length	7,32 m	24' 1"
Width	2,29 m	7' 6"
Height	1,25 m	4' 1"
Weight	14 619 kg	32,230 lb

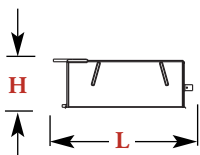
Note: Width is based on platform in stowed position. Crawler is 1,20 m (3' 11").



Counterweight Tray

x 1

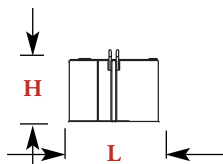
Length	4,98 m	16' 4"
Width	1,45 m	4' 9"
Height	0,51 m	1' 8"
Weight	7 801 kg	17,200 lb



Carbody Counterweight

x 1

Length	1,90 m	6' 3"
Width	1,57 m	5' 2"
Height	0,72 m	2' 4"
Weight	9 979 kg	22,000 lb



Upper Counterweight

Series 1

x 4

Series 2

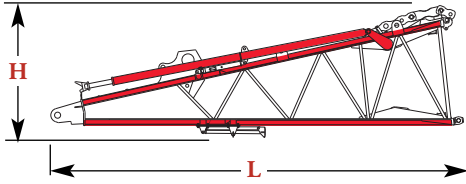
x 6

Length	1,35 m	4' 5"
Width	1,12 m	3' 8"
Height	0,97 m	3' 2"
Weight	6 123 kg	13,500 lb

Option

outline dimensions

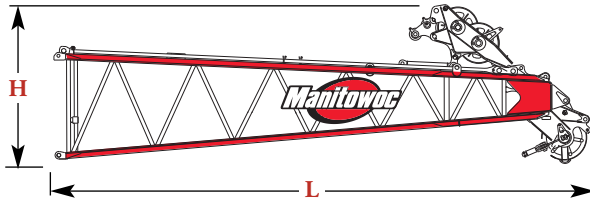
8



No. 84 Boom Butt 6,7 m (22') & Wire Rope Guide, Boom Stop x 1

Length	6,81 m	22' 4"
Width	2,05 m	6' 9"
Height	2,01 m	6' 7"
Weight	2 680 kg	5,935 lb

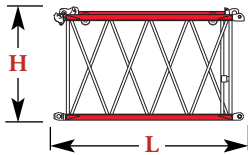
Note: Includes boom butt support for self-erect option and boom angle indicator.



No. 84 Boom Top 8,5 m (28') & Wire Rope Guide, Straps x 1

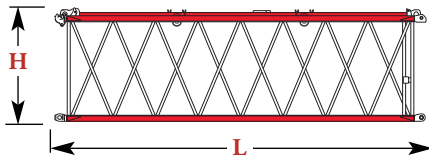
Length	8,97 m	29' 6"
Width	2,05 m	6' 9"
Height	2,64 m	8' 9"
Weight	3 686 kg	8,130 lb

Note: Wire rope guide shown in stowed position.



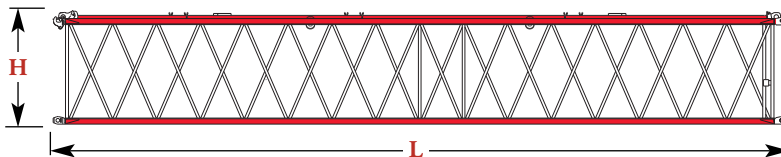
No. 84 Main Boom 3,0 m (10') Insert & Straps x 1, 2

Length	3,23 m	10' 7"
Width	2,08 m	6' 10"
Height	1,91 m	6' 3"
Weight	578 kg	1,280 lb



No. 84 Main Boom 6,1 m (20') Insert & Straps x 1

Length	6,27 m	20' 7"
Width	2,08 m	6' 10"
Height	1,91 m	6' 3"
Weight	941 kg	2,080 lb



No. 82 Main Boom 12,2 m (40') Insert & Straps x 1, 2, 3, 4

Length	12,37 m	40' 7"
Width	2,08 m	6' 10"
Height	1,91 m	6' 3"
Weight	1 560 kg	3,665 lb

Option

outline dimensions

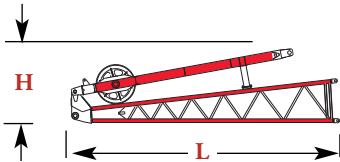
9



No. 84 Boom Open Throat Top 11,6 m (38') & Wire Rope Guide, Straps x 1

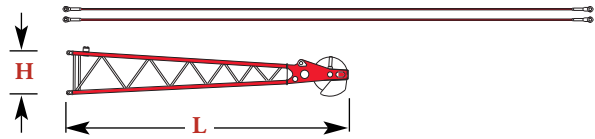
Length	12,34 m	40' 6"
Width	2,08 m	6' 10"
Height	2,39 m	7' 10"
Weight	3 347 kg	7,378 lb

Note: Wire rope guide shown in shipping position.



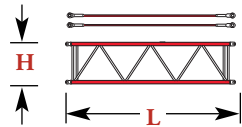
No. 134 Jib Butt 4,6 m (15') & Strut, Stop x 1

Length	4,67 m	15' 4"
Width	0,86 m	2' 10"
Height	1,29 m	4' 3"
Weight	635 kg	1,400 lb



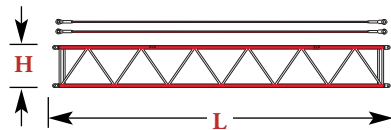
No. 134 Jib Top 4,6 m (15') & Pendants x 1

Length	4,93 m	16' 2"
Width	0,79 m	2' 7"
Height	0,79 m	2' 7"
Weight	553 kg	1,220 lb



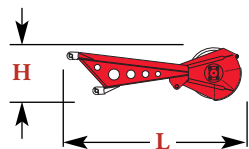
No. 134 Jib Insert 3,0 m (10') & Pendants x 1

Length	3,20 m	10' 6"
Width	0,79 m	2' 7"
Height	0,79 m	2' 7"
Weight	218 kg	480 lb



No. 134 Jib Insert 6,1 m (20') & Pendants x 1, 2

Length	6,17 m	20' 3"
Width	0,79 m	2' 7"
Height	0,79 m	2' 7"
Weight	340 kg	750 lb



No. 84 Upper Boom Point x 1, 2

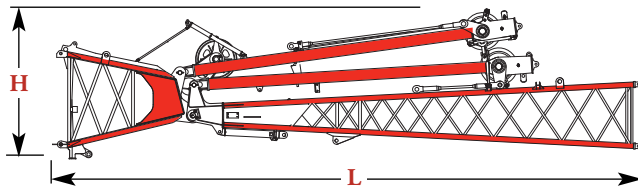
Length	2,64 m	8' 8"
Width	0,41 m	1' 4"
Height	0,81 m	2' 8"
Weight	514 kg	1,135 lb

Note: Includes mounting bracket

Option

outline dimensions

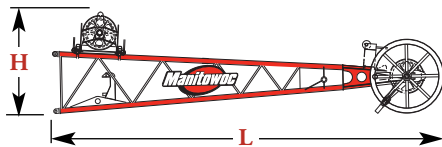
10



No. 155 Luffing Jib 00,0m (00')
Boom Cap, Butt, Struts, Guides,
Straps, Pendants x 1

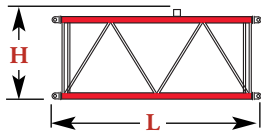
Length	10,80 m	35' 5"
Width	2,08 m	6' 10"
Height	3,05 m	10' 0"
Weight	4 754 kg	10,480 lb

Note: Shown in shipping position.



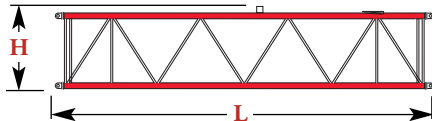
No. 155 Jib Top 7,0 m (23')
Guides & Pendants x 1

Length	7,75 m	25' 5"
Width	1,52 m	5' 0"
Height	2,15 m	7' 1"
Weight	1 803 kg	3,975 lb



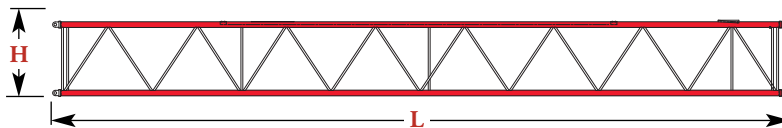
No. 155 Jib Insert 3,0 m (10')
Insert & Pendants x 1

Length	3,15 m	10' 4"
Width	1,52 m	5' 0"
Height	1,37 m	4' 6"
Weight	382 kg	842 lb



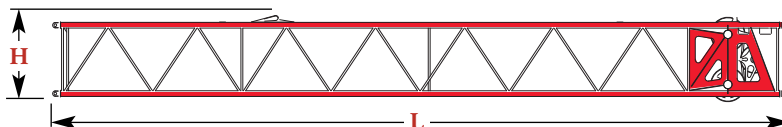
No. 155 Jib Insert 6,1 m (20')
Insert & Pendants x 1

Length	6,20 m	20' 4"
Width	1,52 m	5' 0"
Height	1,37 m	4' 6"
Weight	612 kg	1,349 lb



No. 155 Jib Insert 12,2 m (40')
Insert & Pendants x 1, 2

Length	12,29 m	40' 4"
Width	1,52 m	5' 0"
Height	1,37 m	4' 6"
Weight	1 051 kg	2,316 lb



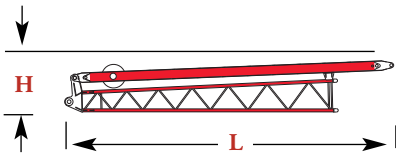
No. 155 Jib Insert 12,2 m (40')
Intermediate Fall,
Insert & Pendants x 1

Length	12,29 m	40' 4"
Width	1,52 m	5' 0"
Height	1,42 m	4' 8"
Weight	1 641 kg	3,617 lb

Option

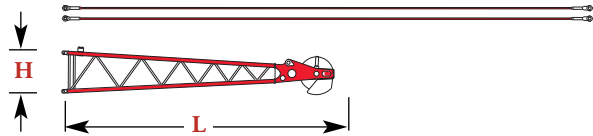
outline dimensions

11



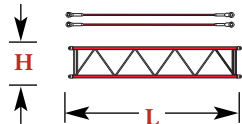
No. 138A Jib Butt 4,6 m (15') & Strut, Stop x 1

Length	5,64 m	18' 6"
Width	0,79 m	2' 7"
Height	0,94 m	3' 1"
Weight	392 kg	871 lb



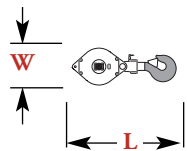
Roller & Pendants x 1

Length	5,69 m	18' 8"
Width	0,76 m	2' 6"
Height	0,71 m	2' 4"
Weight	359 kg	791 lb



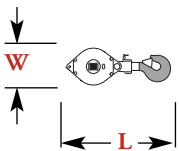
No. 138A Jib Insert 3,0 m (10') & Pendants x 1, 2

Length	3,12 m	10' 3"
Width	0,76 m	2' 6"
Height	0,58 m	1' 11"
Weight	98 kg	220 lb



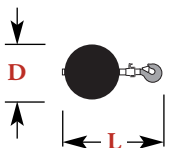
Hook block for 28 mm or (1-1/4") wire rope

Capacity	136 mt	150 t	Length	2,03 m	7' 6"
Weight	1 814 kg	4,000 lb	Width	0,86 m	2' 10"
Capacity	91 mt	100 t	Length	1,98 m	6' 6"
Weight	1 769 kg	3,900 lb	Width	0,89 m	2' 11"
Capacity	41 mt	45 t	Length	1,83 m	6' 0"
Weight	1 179 kg	2,600 lb	Width	0,91 m	3' 0"



Self Assembly Hook block for 28 mm or (1-1/4") wire rope

Capacity	27 mt	30 t	Length	1,17 m	3' 10"
Weight	680 kg	1,500 lb	Width	0,64 m	2' 1"



Weight Ball

Capacity/Swivel	13,6 mt	15 t	Diameter	0,56 m	1' 10"
Weight	594 kg	1 310 lb	Length	1,07 m	3' 6"

Option

transport data

12

Trailer Load Out Summary

Model 555 Series 2
No. 134 Fixed Jib 24,4 m (80') and
No. 84 Boom 76,2 m (250')

Item	Weight each Item kg (lb)	Quantity on Trailer Load #							
		1	2*	3*	4**	5	6	7	8
No. 555 Basic Crane & Front Counterweight	37 665 (83,140)	1							
Crawler Assembly	14 619 (32,230)		1	1					
Counterweight Tray	7 801 (17,200)				1				
Upper Counterweight	6 123 (13,500)					2	2	1	1
Lower Carbody Counterweight	9 979 (22,000)							1	1
6,7 m (22') No. 84 Boom Butt	2 597 (5,730)				1				
8,5 m (28') No. 84 Boom Top	3 686 (8,130)					1			
3,0 m (10') No. 84 Boom Insert	578 (1,280)					1			1
6,1 m (20') No. 84 Boom Insert	941 (2,080)				1				
12,2 m (40') No. 84 Boom Insert***	1 560 (3,665)		1	1			1	1	
10,0 m (30') No. 134 Jib & Strut	1 188 (2,620)								1
3,0 m (10') No. 134 Jib Insert	218 (480)								1
6,1 m (20') No. 134 Jib Insert	340 (750)								2
136 mton (150 ton) Hook Block	1 814 (4,000)						1		
27 mton (30 ton) Self-assembly Block	680 (1,500)				1				
13,6 mton (15 ton) Weight Ball	594 (1,310)							1	
No. 84 Upper Boom Point	514 (1,135)							1	
Approximate Total Shipping Weight kg (lb)		37 665 (83,140)	16 179 (35,895)	16 179 (35,895)	12 019 (26,510)	17 212 (36,410)	15 620 (34,665)	18 770 (41,610)	18 426 (40,630)

* Drop deck trailer recommended.

** Step deck trailer recommended.

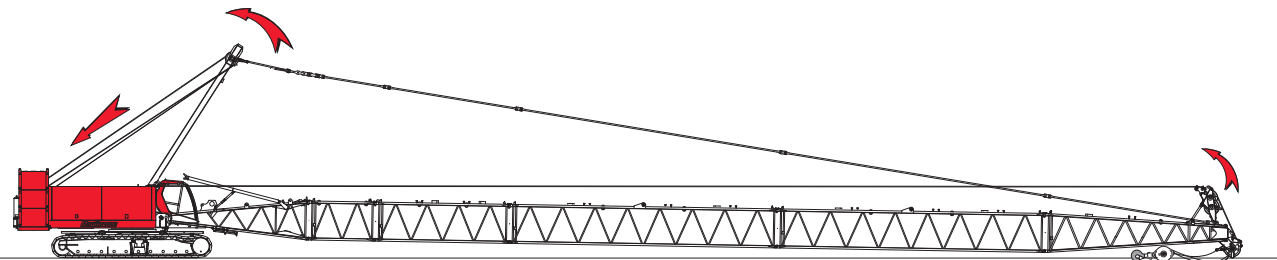
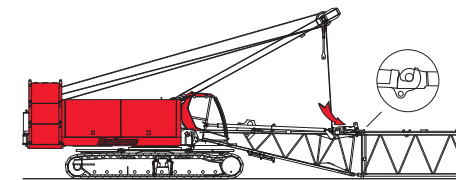
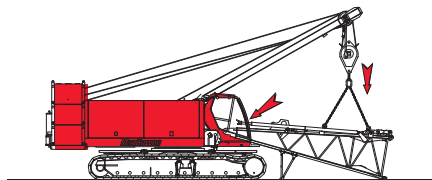
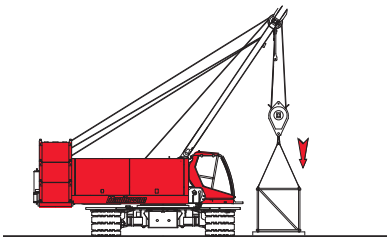
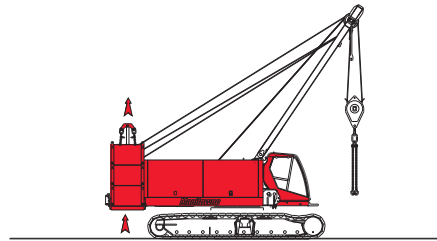
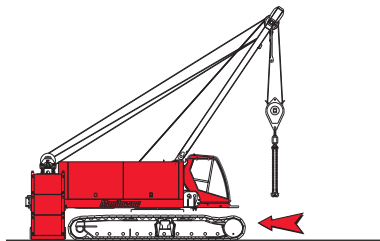
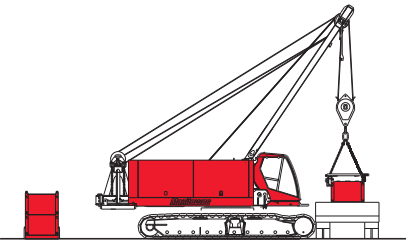
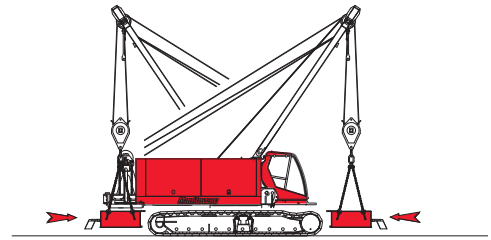
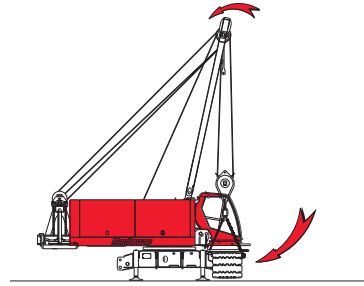
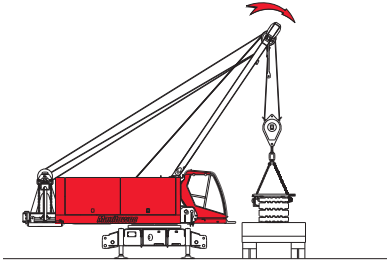
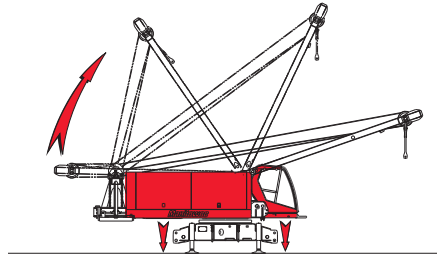
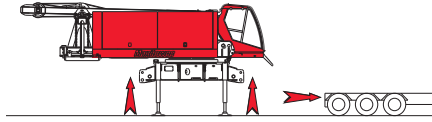
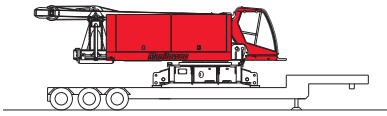
*** One insert includes jib backstay lugs.

Load weights do not include blocking, miscellaneous items.

Complies with all European 3,0 m width restrictions for shipping.

assembly

13



performance data

14

Wire Rope Lengths

Boom No. 84

- or -

Open Throat Top on Boom No. 84

- or -

Fixed Jib No. 134 on Boom No. 84

Boom or Boom and Fixed Jib Length	Whip Line				Hoist line		Maximum Required Parts of Line
	Front or Aux Drum (1 Part of Line)		Front or Aux Drum (2 Parts of Line)		Rear Drum		
	m	(ft)	m	(ft)	m	(ft)	
*15,2 (50)	43	(140)	64	(210)	177	(580)	9
18,3 (60)	49	(160)	73	(240)	207	(680)	9
21,3 (70)	55	(180)	82	(270)	238	(780)	9
24,4 (80)	61	(200)	91	(300)	244	(800)	8
27,4 (90)	67	(220)	101	(330)	268	(880)	8
30,5 (100)	73	(240)	110	(360)	268	(880)	7
33,5 (110)	79	(260)	119	(390)	287	(940)	7
36,6 (120)	85	(280)	128	(420)	287	(940)	6
39,6 (130)	91	(300)	137	(450)	293	(960)	6
42,7 (140)	98	(320)	146	(480)	293	(960)	5
45,7 (150)	104	(340)	152	(500)	293	(960)	5
48,8 (160)	110	(360)	162	(530)	293	(960)	4
51,8 (170)	116	(380)	171	(560)	293	(960)	4
54,9 (180)	122	(400)	180	(590)	293	(960)	4
57,9 (190)	128	(420)	189	(620)	293	(960)	3
61,0 (200)	134	(440)	198	(650)	293	(960)	3
64,0 (210)	140	(460)	207	(680)	293	(960)	3
67,1 (220)	146	(480)	216	(710)	293	(960)	3
70,1 (230)	152	(500)	226	(740)	293	(960)	3
73,2 (240)	158	(520)	235	(770)	293	(960)	3
76,2 (250)	165	(540)	244	(800)	293	(960)	2
79,2 (260)	171	(560)	253	(830)	293	(960)	2
82,3 (270)	177	(580)	-	-	-	-	-
85,3 (280)	183	(600)	-	-	-	-	-

* Excludes Boom No. 84 with Open Throat Top.

NOTE: Line lengths given in table will allow hook to touch ground. When block travel below ground is required, add additional rope equal to parts of line times added travel distance. Hoisting distance or line pull may be limited when block travel below ground is required.

Front and rear drums each provide 147 kN (33,000 lb) maximum single line pull.
Auxiliary drum provides 89 kN (20,000 lb) maximum single line pull.

9 parts of line require upper boom point.

performance data

15

Wire Rope Lengths Luffing Jib No. 155 on Boom No. 84

Boom and Luffing Jib Length	Luffing Jib Hoist Line Front Drum					
	(3 Parts of Line)		(2 Parts of Line)		(1 Part of Line)	
	m	(ft)	m	(ft)	m	(ft)
36,6 (120)	168	(550)	130	(425)	82	(270)
39,6 (130)	183	(600)	137	(450)	88	(290)
42,7 (140)	191	(625)	145	(475)	95	(310)
45,7 (150)	206	(675)	160	(525)	101	(330)
48,8 (160)	213	(700)	168	(550)	107	(350)
51,8 (170)	221	(725)	175	(575)	113	(370)
54,9 (180)	236	(775)	183	(600)	119	(390)
57,9 (190)	244	(800)	191	(625)	125	(410)
61,0 (200)	259	(850)	198	(650)	131	(430)
64,0 (210)	274	(900)	206	(675)	137	(450)
67,1 (220)	-	-	213	(700)	143	(470)
70,1 (230)	-	-	229	(750)	149	(490)
73,2 (240)	-	-	236	(775)	155	(510)
76,2 (250)	-	-	244	(800)	162	(530)
79,2 (260)	-	-	251	(825)	168	(550)
82,3 (270)	-	-	259	(850)	174	(570)
85,3 (280)	-	-	267	(875)	180	(590)
88,4 (290)	-	-	282	(925)	186	(610)
91,4 (300)	-	-	290	(950)	192	(630)
94,5 (310)	-	-	-	-	198	(650)
97,5 (320)	-	-	-	-	204	(670)
100,6 (330)	-	-	-	-	210	(690)

Note: Hoist line lengths given in table will allow hook to touch ground. When block travel below ground is required, add additional rope equal to parts of line times added travel distance. Hoisting distance or line pull may be limited when block travel below ground is required.

Wire Rope Lengths Luffing Jib No. 155 on Boom No. 84

Boom and Luffing Jib Length	Luffing Jib Hoist Line Auxiliary Drum					
	(3 Parts of Line)		(2 Parts of Line)		(1 Part of Line)	
	m	(ft)	m	(ft)	m	(ft)
36,6 (120)	168	(550)	130	(425)		
39,6 (130)	183	(600)	137	(450)		
42,7 (140)	191	(625)	145	(475)		
45,7 (150)	206	(675)	160	(525)		
48,8 (160)	213	(700)	168	(550)		
51,8 (170)	221	(725)	175	(575)	91	(300)
54,9 (180)	236	(775)	183	(600)	98	(320)
57,9 (190)	244	(800)	191	(625)	104	(340)
61,0 (200)	259	(850)	198	(650)	110	(360)
64,0 (210)	274	(900)	206	(675)	116	(380)
67,1 (220)	282	(925)	213	(700)	122	(400)
70,1 (230)	297	(975)	229	(750)	128	(420)
73,2 (240)	305	(1000)	236	(775)	134	(440)
76,2 (250)	320	(1050)	244	(800)	140	(460)
79,2 (260)	335	(1100)	251	(825)	146	(480)
82,3 (270)	343	(1125)	259	(850)	152	(500)
85,3 (280)	358	(1175)	267	(875)	158	(520)
88,4 (290)	-	-	282	(925)	158	(520)
91,4 (300)	-	-	290	(950)	158	(520)
94,5 (310)	-	-	297	(975)	158	(520)
97,5 (320)	-	-	305	(1000)	158	(520)
100,6 (330)	-	-	312	(1025)	-	-

Note: Hoist line lengths given in table will allow hook to touch ground. When block travel below ground is required, add additional rope equal to parts of line times added travel distance. Hoisting distance or line pull may be limited when block travel below ground is required.

performance data

16

Wire Rope Lengths Fixed Jib No. 138A on Luffing Jib No. 155 on Boom No. 84

Boom, Luffing Jib and Fixed Jib Length	Fixed Jib Whip Line Front Drum or Auxiliary Drum	
	(1 Part of Line)	
	m	(ft)
88,4 (290)	186	(610)
91,4 (300)	192	(630)
94,5 (310)	198	(650)
97,5 (320)	204	(670)
100,6 (330)	210	(690)
103,6 (340)	216	(710)
106,7 (350)	223	(730)
109,7 (360)	229	(750)
112,8 (370)	235	(770)
115,8 (380)	241	(790)
118,9 (390)	247	(810)

Note: Line lengths are based on single part lead line. Hoist line and whip line lengths given in table will allow hook to touch ground. When block travel below ground is required, add additional rope equal to parts of line times added travel distance. Hoisting distance or line pull may be limited when block travel below ground is required.

Maximum load on 26 mm or (1") wire rope is 12 400 kg (27,500 lb) per line. When auxiliary drum is used maximum load is 9 070 kg (20,000 lb).

Drum Capacities - Wire Rope

	Maximum Length
Front or Rear Grooved Drum 28 mm Wire Rope*	293 m (962 ft) 6 Layers
Auxiliary Drum 28 mm Wire Rope*	293 m (962 ft) 6 Layers
Auxiliary Drum (28 mm) Wire Rope*	293 m (962 ft) 6 Layers
Boom Hoist Drum 22 mm (7/8") Wire Rope	221 m (725 ft) 8 Layers

*5 m (18") is deducted from maximum spooling capacities for 3 dead wraps per drum or lagging.

Maximum Length – Unassisted Raising

Method	No. 138A Fixed Jib on No. 155 Luffing Jib on No. 84 Main Boom		
	Jack-Knife Procedure		
	Main Boom	Luffing Jib	Fixed Jib
Over end of blocked crawlers m (ft)	36,6 (120)	42,7 - 48,8 (140 - 160)	9,1 - 18,3 (30 - 60)
	42,7 (140)	42,7 - 48,8 (140 - 160)	9,1 - 18,3 (30 - 60)
	48,8 (160)	42,7 - 48,8 (140 - 160)	9,1 - 18,3 (30 - 60)
	51,8 (170)	42,7 - 48,8 (140 - 160)	9,1 - 18,3 (30 - 60)

NOTE: Load block(s), hook(s) and weight ball(s) on ground at start.

Wire Rope Specifications 5:1 Safety Factor

Boom No. 84

- or -

Fixed Jib No. 134 on Boom No. 84

Function Part Number	5:1 Safety Factor Rotation Resistant, Right Hand Lang Lay Wire rope with Pad Eye		
	Hoist Line	Whip Line	Auxilliary Line
	No. A00840	No. A00840	No. A00840
Size Wire Rope	28 mm	28 mm	28 mm
Minimum Breaking Strength	750,8 kN (168,800 lb)	750,8 kN (168,800 lb)	750,8 kN (168,800 lb)
Maximum Load Per Line	14 970 kg (33,000 lb)	13 608 kg (30,000 lb)	13 608 kg (30,000 lb)
Approximate Weight	3,91 kg/m (2.63 lb/ft)	3,91 kg/m (2.63 lb/ft)	3,91 kg/m (2.63 lb/ft)

Wire Rope Specifications 3.5:1 Safety Factor

Boom No. 84

- or -

Fixed Jib No. 134 on Boom No. 84

Function Part Number	3.5:1 Safety Factor 6 x 36 Extra Extra Improved Plow Steel, Right Hand Regular Lay, IWRC Wire rope with Pad Eye		
	Hoist Line	Whip Line	Auxilliary Line
	No. A02479	No. A02479	No. A02479
Size Wire Rope	28 mm	28 mm	28 mm
Minimum Breaking Strength	603,1 kN (135,600 lb)	603,1 kN (135,600 lb)	603,1 kN (135,600 lb)
Maximum Load Per Line	14 970 kg (33,000 lb)	13 608 kg (30,000 lb)	13 608 kg (30,000 lb)
Approximate Weight	3,33 kg/m (2.24 lb/ft)	3,33 kg/m (2.24 lb/ft)	3,33 kg/m (2.24 lb/ft)

Maximum Length – Unassisted Raising

	No. 84 Boom with Heavy-Lift Top - or - No. 134 Fixed Jib on No. 84 Boom with Heavy-Lift Top Series 2	
	Main Boom	Fixed Jib
Over end of blocked crawlers m (ft)	76,2 (250)	-
	73,2 (240)	-
	70,1 (230)	-
	67,1 (220)	12,2 (40)
	64,0 (210)	18,3 (60)
	61,0 (200)	24,4 (80)

NOTE: Load block(s), hook(s) and weight ball(s) on ground at start. Upper boom point cannot be used when jib is attached. Upper boom point cannot be used on 76,2 m (250') boom.

performance data

17

Maximum Length – Unassisted Raising

No. 155 Luffing Jib on No. 84 Main Boom		
Jack-Knife Procedure Without Intermediate Fall		
Method	Main Boom	Luffing Jib
Over end of blocked crawlers m (ft)	30,5 (100)	48,8 (160)
	33,5 (110)	45,7 - 48,8 (150 - 160)
	36,6 (120)	42,7 - 48,8 (140 - 160)
	39,6 (130)	36,6 - 48,8 (120 - 160)
	42,7 (140)	30,5 - 48,8 (100 - 160)
	45,7 (150)	24,4 - 48,8 (80 - 160)
	48,8 (160)	18,3 - 48,8 (60 - 160)
	51,8 (170)	18,3 - 48,8 (60 - 160)

NOTE: Load block(s), hook(s) and weight ball(s) on ground until boom and luffing jib are erected.

Maximum Length – Unassisted Raising

No. 155 Luffing Jib on No. 84 Main Boom		
Jack-Knife Procedure With Intermediate Fall		
Method	Main Boom	Luffing Jib
Over end of blocked crawlers m (ft)	27,4 (90)	45,7 - 48,8 (150 - 160)
	30,5 (100)	42,7 - 48,8 (140 - 160)
	33,5 (110)	39,6 - 48,8 (130 - 160)
	36,6 (120)	36,6 - 48,8 (120 - 160)
	39,6 (130)	33,5 - 48,8 (110 - 160)
	42,7 (140)	33,5 - 48,8 (110 - 160)
	45,7 (150)	33,5 - 48,8 (110 - 160)
	48,8 (160)	33,5 - 48,8 (110 - 160)
	51,8 (170)	33,5 - 45,7 (110 - 150)

NOTE: Load block(s), hook(s) and weight ball(s) on ground until boom and luffing jib are erected.

Maximum Length – Unassisted Raising

No. 155 Luffing Jib on No. 84 Main Boom		
In-Line Procedure Without Intermediate Fall		
Method	Main Boom	Luffing Jib
Over end of blocked crawlers m (ft)	18,3 (60)	18,3 - 48,8 (60 - 160)
	21,3 (70)	18,3 - 48,8 (60 - 160)
	24,4 (80)	18,3 - 48,8 (60 - 160)
	27,4 (90)	18,3 - 48,8 (60 - 160)
	30,5 (100)	18,3 - 45,7 (60 - 150)
	33,5 (110)	18,3 - 42,7 (60 - 140)
	36,6 (120)	18,3 - 39,6 (60 - 130)
	39,6 (130)	18,3 - 33,5 (60 - 110)
	42,7 (140)	18,3 - 27,4 (60 - 90)
	45,7 (150)	18,3 - 21,3 (60 - 70)

NOTE: Load block(s), hook(s) and weight ball(s) on ground until boom and luffing jib are erected.

Maximum Length – Unassisted Raising

No. 155 Luffing Jib on No. 84 Main Boom		
In-Line Procedure With Intermediate Fall		
Method	Main Boom	Luffing Jib
Over end of blocked crawlers m (ft)	18,3 (60)	33,5 - 48,8 (110 - 160)
	21,3 (70)	33,5 - 48,8 (110 - 160)
	24,4 (80)	33,5 - 48,8 (110 - 160)
	27,4 (90)	33,5 - 42,7 (110 - 140)
	30,5 (100)	33,5 - 39,6 (110 - 130)
	33,5 (110)	33,5 - 36,6 (110 - 120)
	36,6 (120)	33,5 (110)

NOTE: Load block(s), hook(s) and weight ball(s) on ground until boom and luffing jib are erected.

performance data

18

Wire Rope Specifications 5:1 Safety Factor

Boom No. 84

- or -

Luffing Jib No. 155 on Boom No. 84

Function Part Number	5:1 Safety Factor Rotation Resistant, Right Hand Lang Lay Wire rope with Pad Eye		
	Hoist Line No. A00840	Whip Line No. A00840	Auxilliary Line No. A00840
Size Wire Rope	28 mm	28 mm	28 mm
Minimum Breaking Strength	750,8 kN (168,800 lb)	750,8 kN (168,800 lb)	750,8 kN (168,800 lb)
Maximum Load Per Line	14 970 kg (33,000 lb)	13 608 kg (30,000 lb)	13 608 kg (30,000 lb)
Approximate Weight	3,91 kg/m (2.63 lb/ft)	3,91 kg/m (2.63 lb/ft)	3,91 kg/m (2.63 lb/ft)

Wire Rope Specifications 3.5:1 Safety Factor

Boom No. 84

- or -

Luffing Jib No. 155 on Boom No. 84

Function Part Number	3.5:1 Safety Factor 6 x 36 Extra Extra Improved Plow Steel, Right Hand Regular Lay, IWRC Wire rope with Pad Eye		
	Hoist Line No. A02479	Whip Line No. A02479	Auxilliary Line No. A02479
Size Wire Rope	28 mm	28 mm	28 mm
Minimum Breaking Strength	603,1 kN (135,600 lb)	603,1 kN (135,600 lb)	603,1 kN (135,600 lb)
Maximum Load Per Line	14 970 kg (33,000 lb)	13 608 kg (30,000 lb)	13 608 kg (30,000 lb)
Approximate Weight	3,33 kg/m (2.24 lb/ft)	3,33 kg/m (2.24 lb/ft)	3,33 kg/m (2.24 lb/ft)

Working Weight

Configuration	kg (lb)	
	Series 1	Series 2
15,2 m (50') No. 84 Boom	107 961 (238,015)	140 961 (309,015)
64,0 m (200') No. 84 Boom* combined with 24,4 m (80') No. 134 Fixed Jib	115 891 (255,496)	148 096 (326,496)

Typical working weight includes optional self-assembly carbody jacks, hydraulic reservoir full, fuel half-full, drums with standard lengths of wire rope, upper boom point, 136 mt (150 t) hook block, and 13,6 mt (15 t) hook and weight ball.

Note: Upper boom point not used with fixed jib.

*64,0 m (200') No. 82 boom maximum allowed.

performance data

19

Main & Whip Drums - 147 kN (33,000 lb)

Full Power Drum - Continuous Duty Single Line Pull/Single Line Speed						
Layer	m/min (ft/min)					
	1	2	3	4	5	6
Line Pull kg (lb)						
0 (0)	87 (286)	96 (314)	104 (342)	113 (370)	121 (398)	130 (426)
2 268 (5,000)	84 (274)	91 (300)	99 (326)	107 (351)	115 (376)	122 (401)
4 536 (10,000)	81 (263)	87 (286)	94 (309)	102 (332)	108 (354)	115 (376)
6 803 (15,000)	77 (251)	83 (273)	89 (293)	95 (313)	97 (318)	99 (323)
9 072 (20,000)	72 (236)	74 (241)	75 (247)	77 (252)	79 (258)	80 (263)
11 340 (25,000)	61 (200)	63 (205)	64 (211)	66 (216)	68 (222)	69 (227)
13 380 (33,000)	51 (165)	52 (170)	54 (176)	55 (181)	57 (186)	59 (192)

NOTE: Line pull is infinitely variable.

Auxiliary Drum - 89,0 kN (20,000 lb)

Full Power Drum - Continuous Duty Single Line Pull/Single Line Speed			
Layer	m/min (ft/min)		
	1	4	6
Line Pull kg (lb)			
0 (0)	116 (380)	146 (480)	168 (550)
2 268 (5,000)	110 (360)	137 (450)	156 (510)
4 536 (10,000)	104 (340)	128 (420)	143 (470)
6 803 (15,000)	95 (310)	98 (320)	98 (320)
9 072 (20,000)	73 (240)	76 (250)	82 (270)

NOTE: Line pull is infinitely variable.

Drums & Laggings - Liftcrane

Tandem Drums - 1 854 mm (73") Wide (Optional)								
Application	Drum Location	Drum Part Number	Drum Type	Drum Diameter	Drum Width	Drum or Lugging Groove Pitch *	Minimum Wire Rope Size**	
Basic Liftcrane Regular Top -or- Basic Liftcrane Open Throat Top	Hoist	Rear	A00485	Grooved	540 mm (21-1/4")	676 mm (26-5/8")	29,39 mm (1.157")	28,55 mm (1.124")
	Whip	Front	A00485	Grooved	540 mm (21-1/4")	676 mm (26-5/8")	29,39 mm (1.157")	28,55 mm (1.124")
	Auxiliary	Boom Butt	A00485	Grooved	540 mm (21-1/4")	676 mm (26-5/8")	29,39 mm (1.157")	28,55 mm (1.124")
Claimshell Limited Duty	Closing	Front	A00485	Grooved	540 mm (21-1/4")	676 mm (26-5/8")	29,39 mm (1.157")	28,55 mm (1.124")
	Holding	Rear	A00485	Grooved	540 mm (21-1/4")	676 mm (26-5/8")	29,39 mm (1.157")	28,55 mm (1.124")

* Maximum wire rope diameter and width a wound on drum must not exceed drum groove pitch.

** Minimum recommended wire rope size for proper spooling.

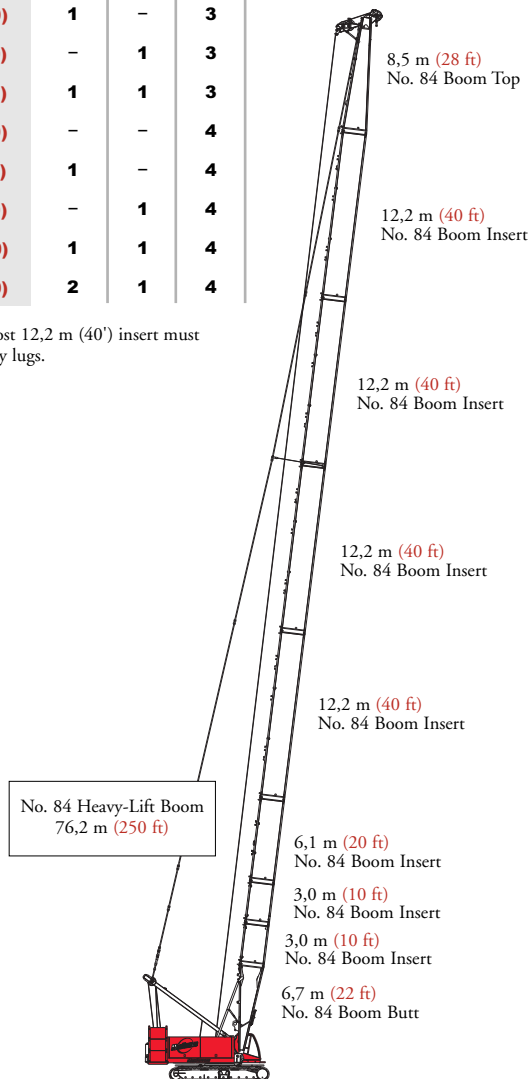
boom combinations

20

No. 84 Boom Combinations

Boom Length m (ft)	Boom Inserts		
	3,0 m (10 ft)	6,1 m (20 ft)	12,2 m (40 ft)
15,2 (50)	-	-	-
18,3 (60)	1	-	-
21,3 (70)	-	1	-
24,4 (80)	1	1	-
27,4 (90)	-	-	1
30,5 (100)	1	-	1
33,5 (110)	-	1	1
36,6 (120)	1	1	1
39,6 (130)	-	-	2
42,7 (140)	1	-	2
45,7 (150)	-	1	2
48,8 (160)	1	1	2
51,8 (170)	-	-	3
54,9 (180)	1	-	3
57,9 (190)	-	1	3
61,0 (200)	1	1	3
64,0 (210)	-	-	4
67,1 (220)	1	-	4
70,1 (230)	-	1	4
73,2 (240)	1	1	4
76,2 (250)	2	1	4

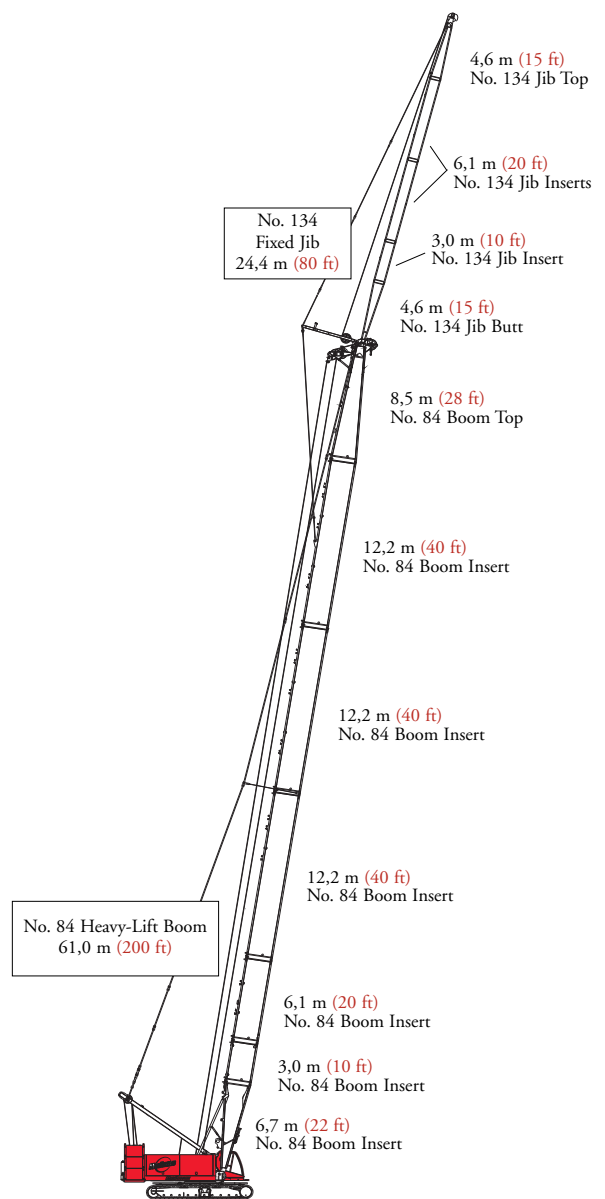
Note: Uppermost 12,2 m (40') insert must include backstay lugs.



Model 555
No. 84 Heavy-Lift Main Boom
76,2 m (250 ft)

No. 134 Fixed Jib Combinations

Jib Length m (ft)	Fixed Jib Inserts	
	3,0 m (10 ft)	6,1 m (20 ft)
9,1 (30)	-	-
12,2 (40)	1	-
15,2 (50)	-	1
18,3 (60)	1	1
21,3 (70)	-	2
24,4 (80)	1	2



Model 555
No. 134 Fixed Jib on
No. 84 Heavy-Lift Main Boom
85,3 m (280 ft)

boom combinations

21

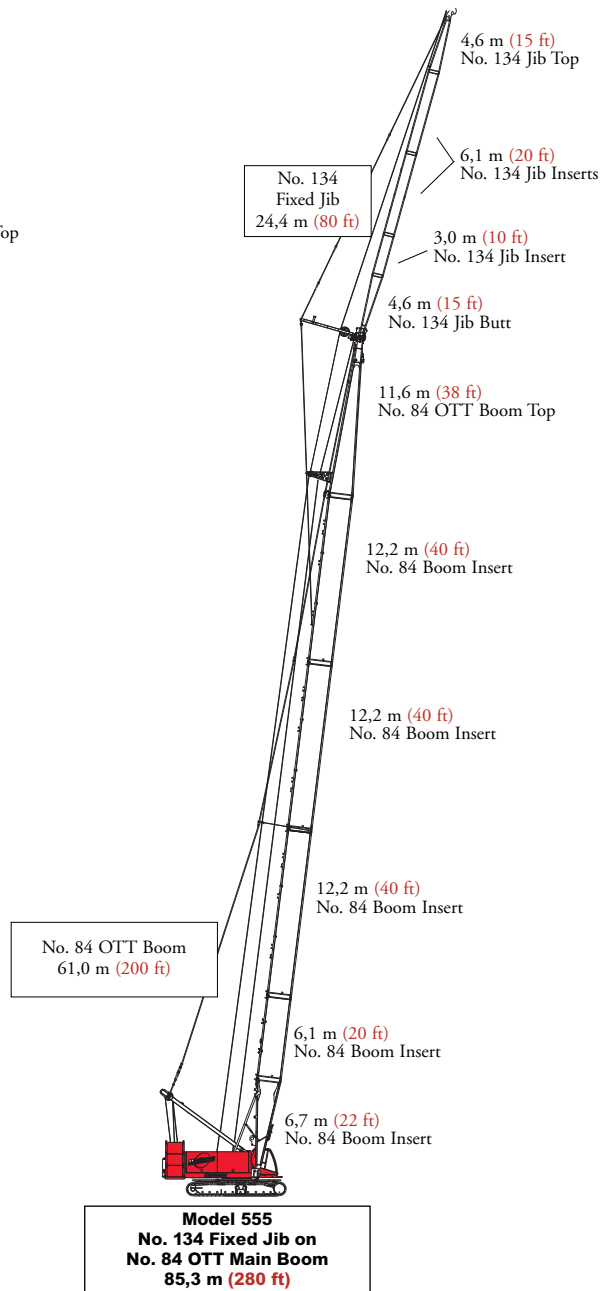
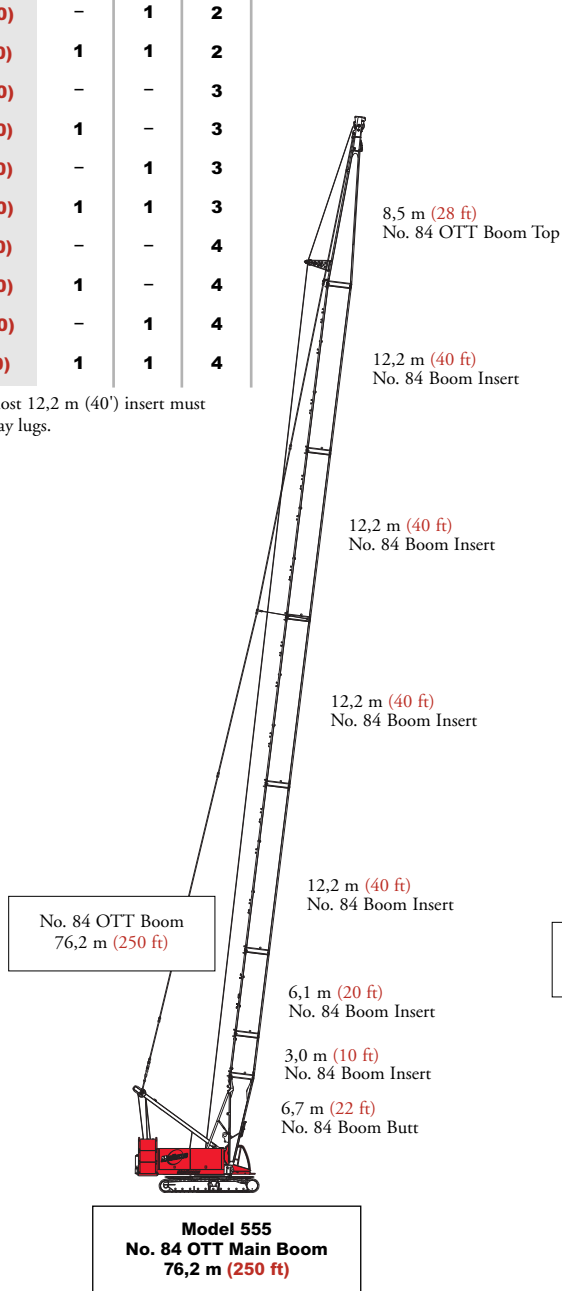
No. 84 OTT Boom Combinations

Boom Length m (ft)	Boom Inserts		
	3,0 m (10 ft)	6,1 m (20 ft)	12,2 m (40 ft)
18,3 (60)	-	-	-
21,3 (70)	1	-	-
24,4 (80)	-	1	-
27,4 (90)	1	1	-
30,5 (100)	-	-	1
33,5 (110)	1	-	1
36,6 (120)	-	1	1
39,6 (130)	1	1	1
42,7 (140)	-	-	2
45,7 (150)	1	-	2
48,8 (160)	-	1	2
51,8 (170)	1	1	2
54,9 (180)	-	-	3
57,9 (190)	1	-	3
61,0 (200)	-	1	3
64,0 (210)	1	1	3
67,1 (220)	-	-	4
70,1 (230)	1	-	4
73,2 (240)	-	1	4
76,2 (250)	1	1	4

Note: Uppermost 12,2 m (40') insert must include backstay lugs.

No. 134 Fixed Jib Combinations

Jib Length m (ft)	Fixed Jib Inserts	
	3,0 m (10 ft)	6,1 m (20 ft)
9,1 (30)	-	-
12,2 (40)	1	-
15,2 (50)	-	1
18,3 (60)	1	1
21,3 (70)	-	2
24,4 (80)	1	2



boom combinations

22

No. 155 Luffing Jib Combinations

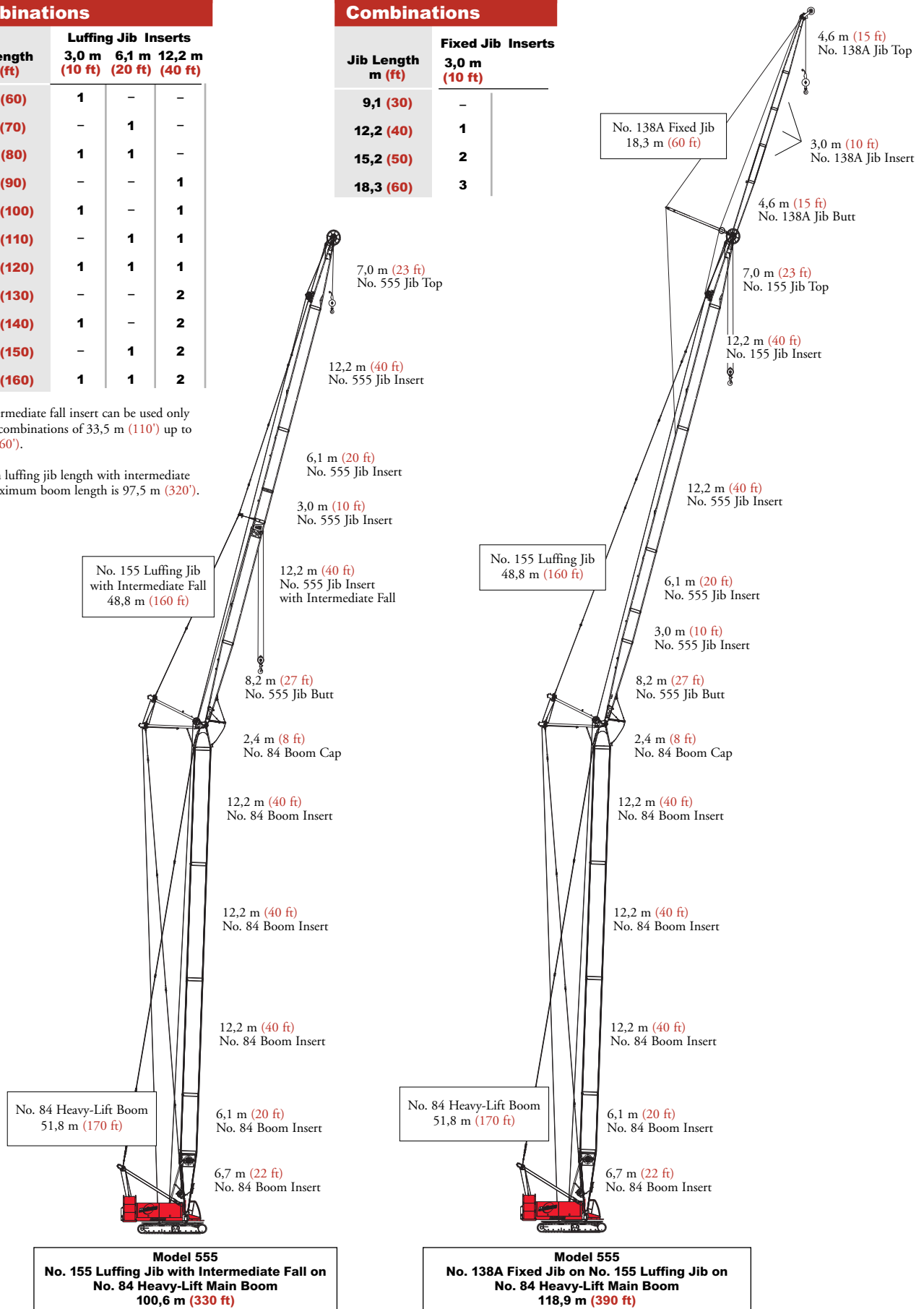
Jib Length m (ft)	Luffing Jib Inserts		
	3,0 m (10 ft)	6,1 m (20 ft)	12,2 m (40 ft)
18,3 (60)	1	-	-
21,3 (70)	-	1	-
24,4 (80)	1	1	-
27,4 (90)	-	-	1
30,5 (100)	1	-	1
33,5 (110)	-	1	1
36,6 (120)	1	1	1
39,6 (130)	-	-	2
42,7 (140)	1	-	2
45,7 (150)	-	1	2
48,8 (160)	1	1	2

No. 138A Fixed Jib Combinations

Jib Length m (ft)	Fixed Jib Inserts
	3,0 m (10 ft)
9,1 (30)	-
12,2 (40)	1
15,2 (50)	2
18,3 (60)	3

Note: Intermediate fall insert can be used only on boom combinations of 33,5 m (110') up to 48,8 m (160').

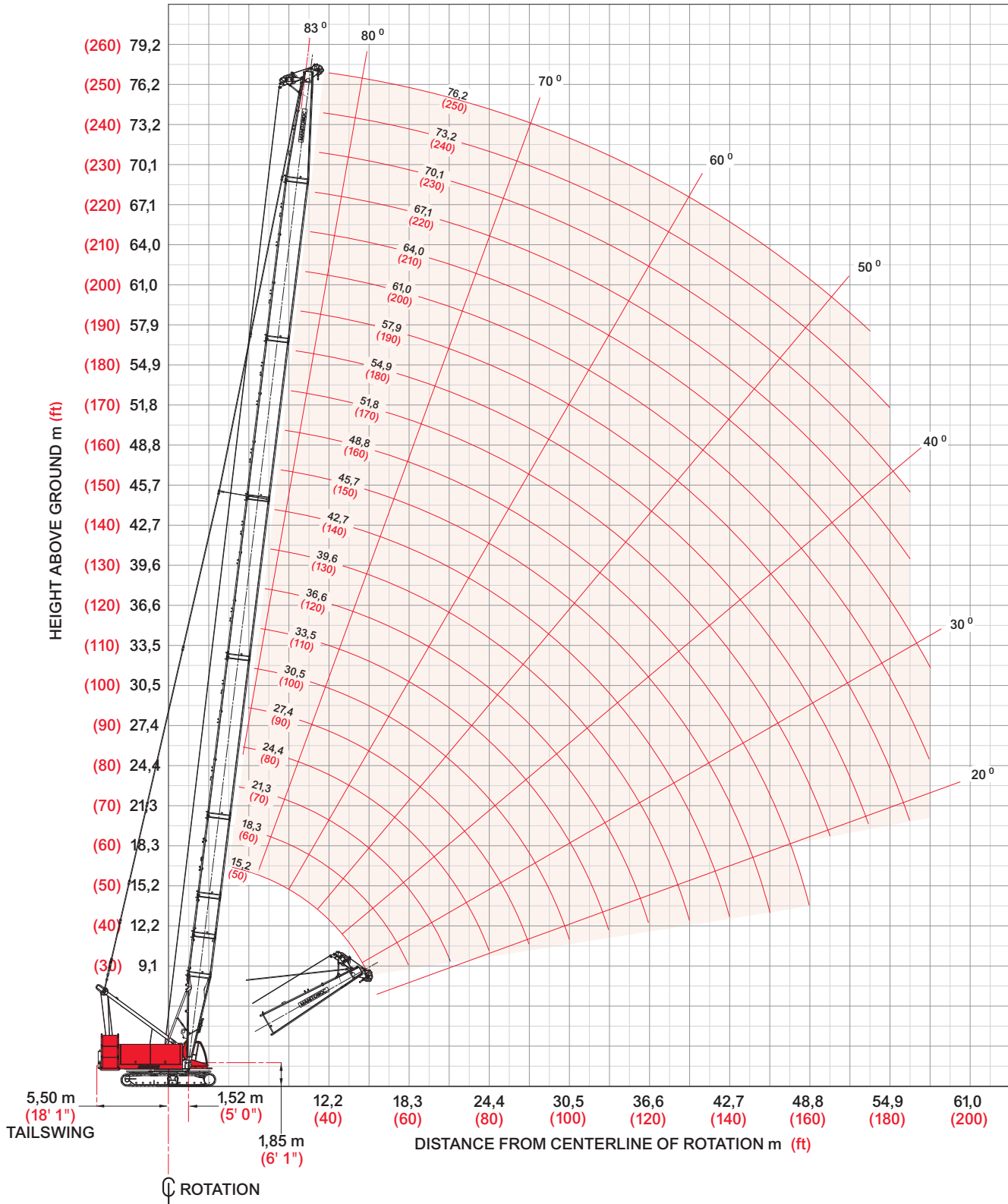
Maximum luffing jib length with intermediate fall on maximum boom length is 97,5 m (320').



heavy-lift boom range diagram

No. 84 Main Boom

23



heavy-lift load charts

24

Liftcrane Boom Capacities - Series 2 Boom No. 84

44 678 kg (98,500 lb) Upperworks Counterweight 19 958 kg (44,000 lb) Carbody Counterweight

360° Rating

kg (lb) x 1 000

Boom m (ft)	15,2 (50.0)	18,3 (60)	21,3 (70)	27,4 (90)	33,5 (110)	39,6 (130)	45,7 (150)	51,8 (170)	57,9 (190)	64,0 (210)	70,1 (230)	76,2 (250)
Radius												
4,6 (15)	136,0 (300.0)	135,6 (299.0)										
5,0 (17)	125,0 (266.5)	125,0 (266.4)	123,7 (266.2)									
6,0 (20)	104,9 (228.0)	104,9 (227.9)	104,8 (227.7)	100,3 (220.4)								
7,0 (24)	88,3 (179.9)	88,7 (180.6)	88,6 (180.9)	88,9 (181.1)	84,0 (181.3)	- (159.3)						
8,0 (28)	70,9 (141.9)	71,2 (142.5)	71,3 (142.8)	71,4 (142.9)	71,5 (143.0)	69,6 (142.8)	61,9 (133.6)	- (115.7)				
9,0 (32)	59,4 (116.6)	59,7 (117.1)	59,8 (117.4)	59,8 (117.4)	59,9 (117.5)	60,0 (117.3)	58,9 (116.9)	51,5 (110.3)	- (94.8)			
11,0 (36)	44,5 (98.5)	44,7 (99.0)	44,8 (99.2)	44,8 (99.3)	44,8 (99.3)	44,7 (99.0)	44,6 (98.7)	44,4 (98.3)	40,8 (90.2)	36,0 (79.5)		
12,2 (40)	39,3 (84.9)	39,6 (85.4)	39,7 (85.6)	39,7 (85.7)	39,6 (85.6)	39,5 (85.3)	39,4 (85.0)	39,2 (84.6)	38,7 (84.2)	34,5 (75.6)	30,3 (66.3)	- (54.3)
15,2 (50)	28,7 (62.0)	29,0 (62.7)	29,1 (62.9)	29,1 (63.0)	29,1 (62.9)	29,0 (62.6)	28,8 (62.2)	28,6 (61.7)	28,4 (61.3)	28,4 (60.7)	26,6 (58.1)	21,9 (47.9)
18,3 (60)		22,4 (48.5)	22,6 (48.9)	22,7 (49.0)	22,6 (48.9)	22,5 (48.6)	22,3 (48.2)	22,1 (47.7)	21,8 (47.2)	21,6 (46.6)	21,4 (46.1)	19,0 (41.4)
21,3 (70)			19,5 (39.2)	19,6 (39.5)	19,6 (39.4)	19,4 (39.0)	19,2 (38.7)	19,0 (38.1)	18,7 (37.7)	18,5 (37.1)	18,2 (36.5)	17,2 (35.4)
24,4 (80)				15,0 (32.5)	15,0 (32.5)	14,9 (32.2)	14,7 (31.8)	14,4 (31.2)	14,3 (30.8)	14,0 (30.2)	13,7 (29.6)	13,4 (28.9)
				13,3 (27.2)	13,4 (27.3)	13,2 (27.0)	13,0 (26.6)	12,8 (26.0)	12,6 (25.5)	12,3 (24.9)	12,0 (24.3)	11,8 (23.7)
					10,7 (23.2)	10,6 (22.9)	10,4 (22.5)	10,2 (21.9)	10,0 (21.5)	9,7 (20.8)	9,4 (20.2)	9,1 (19.6)
					9,7 (19.8)	9,5 (19.5)	9,4 (19.2)	9,1 (18.7)	8,9 (18.2)	8,6 (17.5)	8,3 (16.9)	8,1 (16.3)
						7,8 (16.8)	7,7 (16.5)	7,4 (15.9)	7,2 (15.5)	6,9 (14.8)	6,6 (14.2)	6,3 (13.6)
						7,1 (14.4)	6,9 (14.2)	6,7 (13.7)	6,5 (13.2)	6,2 (12.6)	5,9 (12.0)	5,6 (11.3)
							5,7 (12.2)	5,5 (11.7)	5,2 (11.2)	5,0 (10.6)	4,7 (10.0)	4,4 (9.4)
							5,1 (10.5)	4,9 (10.0)	4,7 (9.6)	4,4 (9.0)	4,2 (8.4)	3,9 (7.7)
								4,0 (8.6)	3,8 (8.1)	3,5 (7.5)	3,2 (6.9)	3,0 (6.3)
									3,6 (6.8)	3,4 (6.2)	2,9 (5.7)	2,6 (5.0)
										2,7 (5.7)	2,4 (5.1)	2,1 (4.5)
											2,3 (5.1)	1,8 (4.0)

Fixed Jib No. 134 on Heavy-Lift Boom No. 84

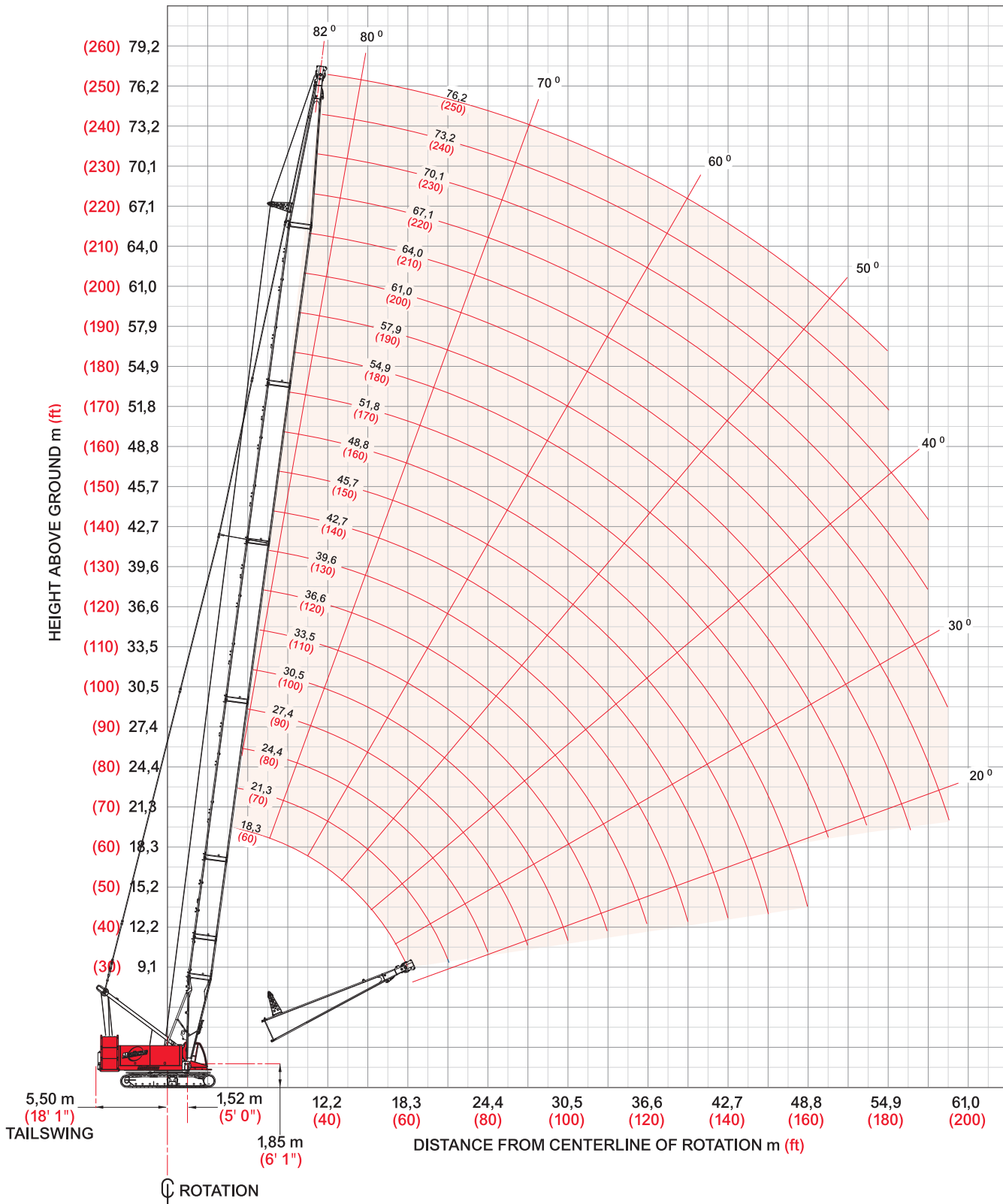
Jib Length m (ft)	Deduct from Capacity when fixed jib is attached kg (lb)
9,1 (30)	1 170 (3,900)
12,2 (40)	2 130 (4,700)
15,2 (50)	2 540 (5,600)
18,3 (60)	2 990 (6,600)
21,3 (70)	3 450 (7,600)
24,4 (80)	3 950 (8,700)

Deduct 590 kg (1,300 lb) from capacities when upper boom point is attached.

heavy-lift boom range diagram

No. 84 OTT Boom

25



heavy-lift load charts

26

Liftcrane Boom Capacities - Series 2 Boom No. 84 OTT

44 678 kg (98,500 lb) Upperworks Counterweight 19 958 kg (44,000 lb) Carbody Counterweight

360° Rating

kg (lb) x 1 000

Boom m (ft)	18,3 (60.0)	21,3 (70)	24,4 (80)	30,5 (100)	36,6 (120)	42,7 (140)	45,7 (150)	51,8 (170)	57,9 (190)	64,0 (210)	70,1 (230)	76,2 (250)
Radius												
4,3 (14)	136,0 (300.0)											
5,0 (17)	124,9 (266.3)	123,6 (266.1)	- (248.9)									
6,0 (20)	105,0 (228.0)	104,9 (227.8)	105,1 (227.5)	94,8 (208.0)								
7,0 (24)	88,5 (180.4)	88,6 (180.7)	88,6 (180.8)	87,5 (180.8)	81,2 (176.2)							
9,0 (30)	59,7 (128.8)	59,8 (129.0)	59,9 (129.1)	59,8 (128.9)	59,7 (128.8)	59,9 (128.4)	59,6 (128.3)	- (119.3)				
10,0 (34)	51,3 (107.6)	51,4 (107.8)	51,4 (107.9)	51,3 (107.7)	51,3 (107.5)	51,1 (107.1)	51,0 (107.0)	51,2 (106.5)	44,7 (98.4)			
12,0 (40)	39,7 (85.8)	39,8 (86.0)	39,8 (86.0)	39,7 (85.8)	39,6 (85.6)	39,4 (85.1)	39,4 (85.0)	39,1 (84.5)	39,0 (84.1)	37,1 (81.2)	35,2 (77.5)	- (63.2)
15,0 (50)	29,2 (63.2)	29,3 (63.4)	29,3 (63.4)	29,2 (63.2)	29,1 (63.0)	28,9 (62.5)	28,9 (62.4)	28,6 (61.8)	28,4 (61.3)	28,2 (60.8)	28,0 (60.2)	27,2 (59.6)
18,0 (60)	22,8 (49.2)	22,9 (49.5)	22,9 (49.5)	22,8 (49.3)	22,7 (49.1)	22,5 (48.6)	22,4 (48.4)	22,2 (47.9)	21,9 (47.4)	21,7 (46.8)	21,3 (46.1)	21,1 (45.5)
20,0 (70)		19,8 (39.9)	19,8 (40.0)	19,7 (39.8)	19,6 (39.6)	19,4 (39.1)	19,3 (39.0)	19,1 (38.4)	18,8 (37.9)	18,6 (37.3)	18,3 (36.6)	18,0 (36.0)
24,0 (80)			15,3 (33.1)	15,3 (33.0)	15,2 (32.8)	14,9 (32.3)	14,9 (32.2)	14,6 (31.6)	14,4 (31.1)	14,1 (30.4)	13,8 (29.8)	13,5 (29.1)
26,0 (90)				13,6 (27.8)	13,5 (27.6)	13,3 (27.1)	13,2 (27.0)	12,9 (26.4)	12,7 (25.9)	12,4 (25.2)	12,1 (24.6)	11,9 (24.0)
30,0 (100)				10,9 (23.6)	10,9 (23.5)	10,7 (23.0)	10,6 (22.9)	10,4 (22.4)	10,1 (21.8)	9,8 (21.2)	9,5 (20.5)	9,2 (19.9)
32,0 (110)					9,8 (20.2)	9,6 (19.8)	9,6 (19.7)	9,3 (19.1)	9,1 (18.6)	8,8 (17.9)	8,5 (17.3)	8,2 (16.6)
36,0 (120)					8,1 (17.5)	7,9 (17.1)	7,9 (17.0)	7,6 (16.4)	7,4 (15.9)	7,1 (15.2)	6,8 (14.6)	6,5 (13.9)
38,0 (130)						7,2 (14.8)	7,2 (14.7)	6,9 (14.2)	6,7 (13.6)	6,4 (13.0)	6,1 (12.3)	5,8 (11.7)
42,0 (140)						6,0 (12.8)	5,9 (12.8)	5,7 (12.2)	5,4 (11.7)	5,2 (11.1)	4,9 (10.4)	4,6 (9.8)
44,0 (150)							5,4 (11.9)	5,2 (10.6)	4,9 (10.1)	4,6 (9.4)	4,3 (8.8)	4,0 (8.1)
48,0 (160)								4,2 (9.1)	4,0 (8.6)	3,7 (8.0)	3,5 (7.4)	3,1 (6.7)
50,0 (170)								3,8 (8.4)	3,6 (7.3)	3,3 (6.7)	3,0 (6.1)	2,7 (5.4)
54,0 (180)									2,9 (6.2)	2,6 (5.6)	2,3 (5.0)	2,1 (4.3)
56,0 (185)									2,6 (5.7)	2,3 (5.1)	2,0 (4.5)	
58,0 (195)										2,0 (4.1)		

Fixed Jib No. 134 on Boom No. 84 OTT

Jib Length m (ft)	Deduct from Capacity when fixed jib is attached kg (lb)
9,1 (30)	1 170 (3,900)
12,2 (40)	2 130 (4,700)
15,2 (50)	2 540 (5,600)
18,3 (60)	2 990 (6,600)
21,3 (70)	3 450 (7,600)
24,4 (80)	3 950 (8,700)

Deduct 590 kg (1,300 lb) from capacities when upper boom point is attached.

model 555

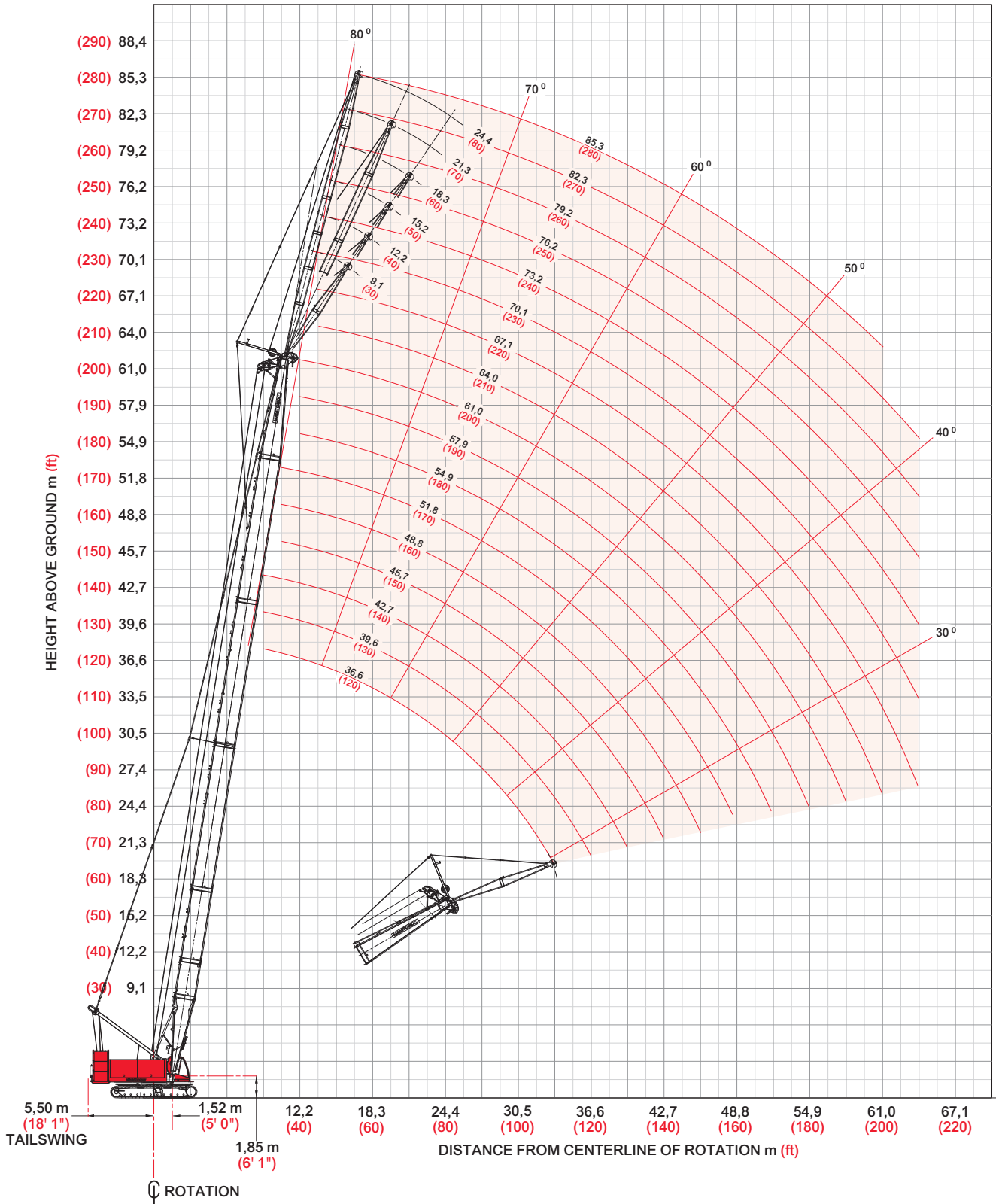


Meets ANSI B30.5 Requirements - Capacities do not exceed 75% of static tipping load.
NOTICE: This capacity chart is for reference only and must not be used for lifting purposes.

fixed jib range diagram

No. 134 Fixed Jib on No. 84 Main Boom

27



fixed jib load charts

28

Liftcrane Boom Capacities - Series 2

Fixed Jib No. 134 with 3 810 mm (12' 6") strut on Boom No. 84

44 678 kg (98,500 lb) Upperworks Counterweight 19 958 kg (44,000 lb) Carbody Counterweight

360° Rating

kg (lb) x 1 000

5° Offset

25° Offset

Boom m (ft)	27,4 (90)	36,6 (120)	48,8 (160)	57,9 (190)	67,1 (220)
Radius					
9,1 (30)	26,7 (59.0)				
12,0 (40)	26,7 (59.0)	26,7 (59.0)	-		
14,0 (50)	26,7 (58.7)	26,7 (59.0)	26,7 (59.0)	26,7 (59.0)	-
18,0 (60)	23,1 (49.5)	22,7 (48.8)	22,1 (47.6)	21,7 (46.7)	20,5 (45.3)
24,0 (80)	15,3 (33.1)	15,0 (32.4)	14,4 (31.1)	14,0 (30.2)	13,6 (29.3)
28,0 (100)	12,2 (23.7)	11,9 (23.0)	11,3 (21.8)	10,9 (20.8)	10,4 (19.9)
36,0 (120)		7,9 (17.0)	7,3 (15.8)	6,9 (14.8)	6,4 (13.8)
40,0 (140)		6,5 (12.7)	6,0 (11.6)	5,5 (10.6)	5,1 (9.6)
48,0 (160)			3,9 (8.4)	3,5 (7.5)	3,1 (6.5)
52,0 (180)			3,1 (6.0)	2,7 (5.0)	2,3 (4.1)
60,0 (200)					

Boom m (ft)	27,4 (90)	36,6 (120)	48,8 (160)	57,9 (190)	67,1 (220)
Radius					
- (40)	- (46.7)				
14,0 (50)	19,7 (41.8)	21,0 (44.8)	-		
18,0 (60)	17,3 (38.0)	18,8 (41.2)	20,2 (44.4)	21,0 (46.2)	-
20,0 (70)	16,4 (35.0)	17,9 (38.3)	19,3 (39.7)	19,5 (39.0)	18,3 (38.3)
24,0 (80)	14,9 (32.6)	15,6 (33.5)	15,0 (32.5)	14,7 (31.8)	14,4 (31.0)
28,0 (100)	12,5 (24.2)	12,3 (23.8)	11,8 (22.8)	11,5 (22.0)	11,1 (21.2)
36,0 (120)		8,1 (17.4)	7,6 (16.5)	7,3 (15.7)	6,9 (14.8)
40,0 (140)			6,2 (12.1)	5,9 (11.2)	5,5 (10.4)
48,0 (160)				3,7 (7.9)	3,3 (7.1)
52,0 (180)					2,5 (4.6)
56,0 (190)					1,8 (-)

Boom m (ft)	27,4 (90)	36,6 (120)	48,8 (160)	57,9 (190)	64,0 (210)
Radius					
9,1 (30)					
12,0 (40)	18,5 (40.7)	-			
14,0 (50)	17,8 (38.5)	18,5 (40.0)	19,1 (41.5)	-	
18,0 (60)	16,6 (36.6)	17,4 (38.2)	18,1 (39.9)	18,6 (40.9)	18,7 (41.3)
24,0 (80)	15,1 (33.3)	15,4 (33.1)	14,7 (31.8)	14,3 (30.9)	14,0 (30.2)
28,0 (100)	12,6 (24.6)	12,2 (23.7)	11,6 (22.4)	11,2 (21.4)	10,9 (20.7)
36,0 (120)	8,6 (18.5)	8,2 (17.7)	7,6 (16.3)	7,1 (15.3)	6,8 (14.6)
40,0 (140)	7,1 (-)	6,8 (13.4)	6,2 (12.1)	5,7 (11.1)	5,4 (10.4)
48,0 (160)		4,7 (10.2)	4,1 (8.9)	3,7 (7.9)	3,4 (7.2)
52,0 (180)			3,4 (6.5)	2,9 (5.5)	2,6 (4.8)
60,0 (200)			2,1 (4.5)		

Boom m (ft)	27,4 (90)	36,6 (120)	48,8 (160)	57,9 (190)	64,0 (210)
Radius					
- (40)					
14,0 (50)					
18,0 (60)	12,8 (28.2)	13,1 (29.0)			
20,0 (70)	12,1 (25.8)	12,8 (27.6)	13,1 (28.8)	-	-
24,0 (80)	10,9 (23.9)	11,7 (25.7)	12,6 (27.6)	12,7 (27.9)	12,2 (27.0)
28,0 (100)	9,9 (20.9)	10,8 (22.8)	11,7 (24.2)	12,0 (23.5)	11,7 (22.9)
36,0 (120)		8,6 (18.6)	8,2 (17.7)	7,8 (16.9)	7,6 (16.4)
40,0 (140)		7,2 (14.0)	6,7 (13.1)	6,4 (12.3)	6,1 (11.7)
48,0 (160)			4,5 (9.7)	4,2 (8.9)	3,9 (8.3)
52,0 (180)				3,3 (6.2)	3,0 (5.6)
56,0 (190)				2,6 (5.1)	2,3 (4.5)

model 555



Meets ANSI B30.5 Requirements - Capacities do not exceed 75% of static tipping load.
 NOTICE: This capacity chart is for reference only and must not be used for lifting purposes.

fixed jib load charts

29

Liftcrane Boom Capacities - Series 2 Fixed Jib No. 134 with 3 810 mm (12' 6") strut on Boom No. 84

44 678 kg (98,500 lb) Upperworks Counterweight 19 958 kg (44,000 lb) Carbody Counterweight

360° Rating

kg (lb) x 1 000

		5° Offset					25° Offset						
Boom m (ft)		27,4 (90)	36,6 (120)	48,8 (160)	57,9 (190)	64,0 (210)	Boom m (ft)		27,4 (90)	36,6 (120)	48,8 (160)	57,9 (190)	64,0 (210)
Jib 18,3 m (60 ft)	Radius												
	10,7 (35)	13,6 (30.0)					18,0 (60)	- (23.9)					
	14,0 (50)	13,5 (29.7)	13,6 (30.0)	- (30.0)			20,0 (70)	10,5 (22.9)	10,8 (23.5)		- (24.1)		
	18,0 (60)	12,8 (28.2)	13,3 (29.4)	13,6 (30.0)	13,6 (30.0)	13,6 (30.0)	24,0 (80)	9,6 (21.0)	10,3 (22.7)	10,6 (23.4)	10,7 (23.5)	10,7 (22.7)	
	20,0 (70)	12,4 (26.8)	13,0 (28.2)	13,5 (29.5)	13,6 (30.0)	13,6 (30.0)	26,0 (90)	9,0 (19.3)	9,8 (21.0)	10,4 (22.8)	10,4 (22.7)	10,4 (22.0)	10,4 (22.0)
	24,0 (80)	11,6 (25.5)	12,3 (27.0)	12,9 (28.5)	13,3 (29.3)	13,5 (29.8)	28,0 (100)	8,6 (17.9)	9,3 (19.6)	10,2 (21.4)	10,2 (22.0)	10,2 (21.4)	10,2 (21.4)
	28,0 (100)	10,9 (23.2)	11,6 (24.0)	11,8 (22.7)	11,3 (21.7)	11,0 (21.0)	36,0 (120)	7,2 (15.7)	7,9 (17.3)	8,4 (18.1)	8,1 (17.3)	8,1 (16.8)	8,1 (16.8)
	36,0 (120)	8,7 (18.8)	8,3 (17.9)	7,7 (16.6)	7,2 (15.6)	6,9 (14.9)	40,0 (140)		7,3 (14.5)	6,9 (13.5)	6,5 (12.7)	6,5 (12.1)	6,5 (12.1)
	40,0 (140)	7,3 (14.5)	6,9 (13.7)	6,3 (12.3)	5,9 (11.3)	5,5 (10.6)	48,0 (160)			4,7 (10.0)	4,3 (9.2)	4,3 (8.7)	4,3 (8.7)
	48,0 (160)		4,9 (10.5)	4,3 (9.2)	3,8 (8.1)	3,5 (7.4)	52,0 (180)				3,8 (7.3)	3,5 (6.5)	3,5 (6.0)
56,0 (190)			2,8 (5.7)	2,4 (4.7)	2,0 (4.0)	56,0 (190)					2,7 (4.4)	2,5 (4.8)	2,5 (4.8)
60,0 (190)						60,0 (190)					2,1 (4.4)		

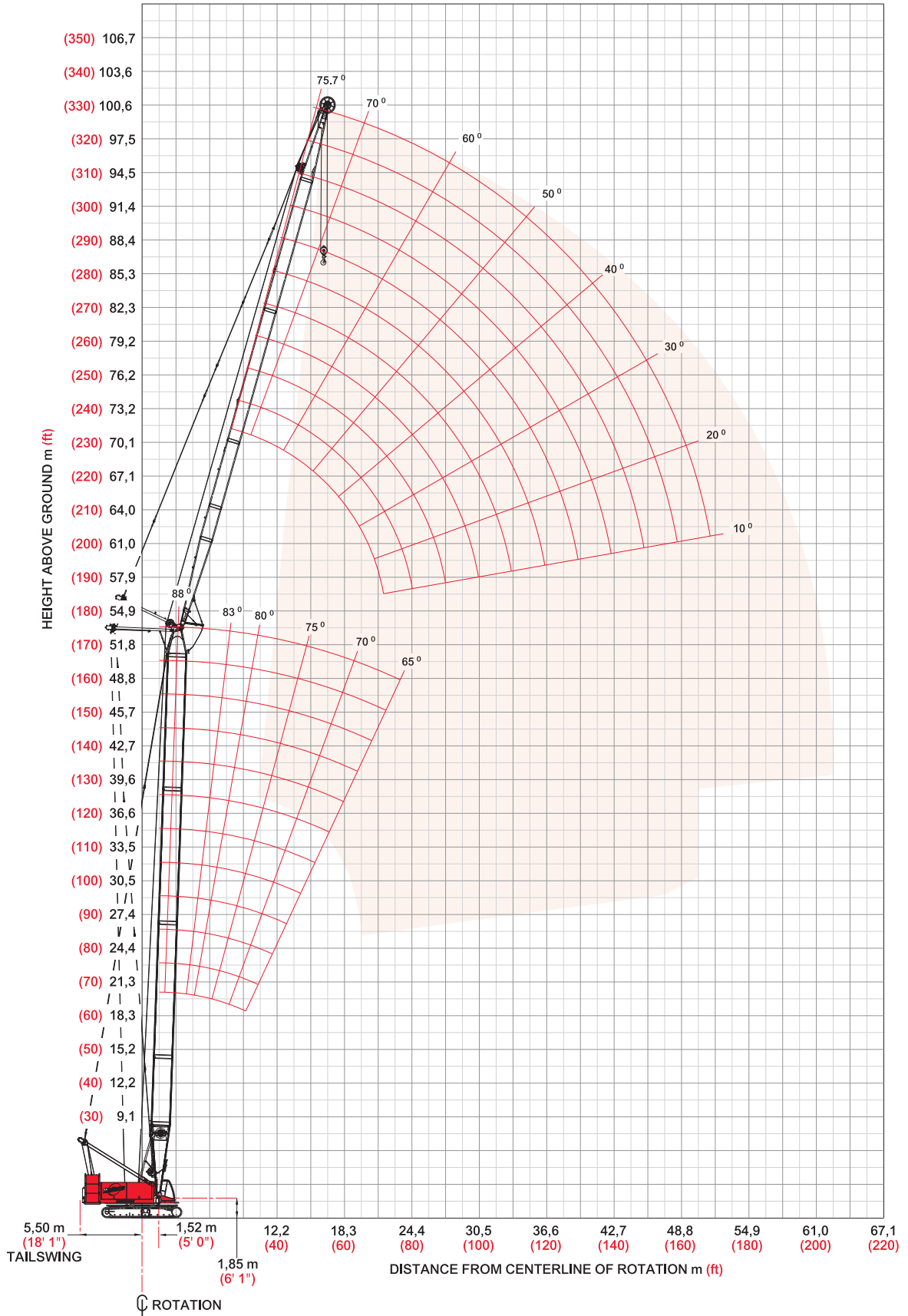
		5° Offset					25° Offset						
Boom m (ft)		27,4 (90)	36,6 (120)	48,8 (160)	57,9 (190)	61,0 (200)	Boom m (ft)		27,4 (90)	36,6 (120)	48,8 (160)	57,9 (190)	61,0 (200)
Jib 24,4 m (80 ft)	Radius												
	10,7 (35)						18,0 (60)						
	14,0 (50)	9,2 (20.2)	9,2 (20.4)	- (20.6)			20,0 (70)	7,5 (16.4)	- (16.7)				
	18,0 (60)	9,0 (19.9)	9,1 (20.1)	9,2 (20.4)	9,3 (20.5)	9,3 (20.6)	24,0 (80)	7,1 (15.6)	7,3 (16.1)	- (16.5)			
	20,0 (70)	8,9 (19.2)	9,0 (19.9)	9,1 (20.1)	9,2 (20.3)	9,2 (20.3)	26,0 (90)	6,9 (15.0)	7,1 (15.5)	7,3 (16.0)	7,4 (16.3)	7,5 (16.4)	7,5 (16.4)
	24,0 (80)	8,3 (18.2)	8,8 (19.3)	9,0 (19.9)	9,1 (20.1)	9,1 (20.1)	28,0 (100)	6,7 (14.2)	6,9 (14.9)	7,2 (15.5)	7,3 (15.9)	7,4 (16.3)	7,4 (16.0)
	28,0 (100)	7,7 (16.4)	8,2 (17.7)	8,8 (18.9)	9,0 (19.6)	9,0 (19.8)	36,0 (120)	5,5 (12.2)	6,1 (13.4)	6,6 (14.6)	6,8 (15.0)	6,8 (15.1)	6,8 (15.1)
	36,0 (120)	6,8 (14.9)	7,3 (16.2)	7,8 (16.8)	7,3 (15.7)	7,2 (15.4)	40,0 (140)	5,1 (10.7)	5,6 (11.9)	6,3 (13.3)	6,6 (13.4)	6,6 (13.1)	6,6 (13.1)
	40,0 (140)	6,4 (13.6)	6,9 (14.0)	6,4 (12.5)	5,9 (11.5)	5,8 (11.1)	48,0 (160)		4,9 (10.7)	5,0 (10.7)	4,6 (9.9)	4,5 (9.6)	4,5 (9.6)
	48,0 (160)	5,5 (11.8)	5,0 (10.8)	4,4 (9.4)	3,9 (8.3)	3,7 (8.0)	52,0 (180)		4,6 (10.7)	4,1 (8.0)	3,8 (7.2)	3,6 (6.9)	3,6 (6.9)
56,0 (190)		3,6 (7.4)	3,0 (6.0)	2,5 (4.9)	2,3 (4.6)	60,0 (200)				2,7 (5.8)	2,4 (5.0)	2,2 (4.7)	2,2 (4.7)
64,0 (210)			1,9 (4.2)			64,0 (210)					1,8 (4.1)		

Meets ANSI B30.5 Requirements - Capacities do not exceed 75% of static tipping load.
NOTICE: This capacity chart is for reference only and must not be used for lifting purposes.

luffing jib range diagram

No. 155 Luffing Jib on No. 84 Main Boom

30



Luffing jib load charts

Liftcrane Luffing Jib Capacities - Series 2 Luffing Jib No. 155 on Boom No. 84

44 680 kg (98,500 lb) Counterweight 19 960 kg (44,000 lb) Carbody Counterweight

360° Rating

kg (lb) x 1 000

88° Boom Angle

31

Luffing Jib Length 18,3 m (60 ft)	Boom m (ft)	18,3 (60)	24,4 (80)	30,5 (100)	42,7 (140)	51,8 (170)
	Radius 10,0 (35)		-	-	-	-
12,0 (40)		38,2 (83.5)	37,0 (80.5)	35,9 (77.9)	-	-
14,0 (50)		32,7 (66.3)	31,8 (64.7)	30,9 (63.1)	28,0 (57.6)	-
16,0 (55)		28,4 (59.1)	28,0 (59.2)	27,3 (58.0)	25,1 (53.3)	-
18,0 (60)		23,7 (50.6)	25,1 (54.6)	24,7 (53.8)	22,8 (49.7)	-
20,0 (70)					20,8 (36.5)	-
24,0 (80)						39,1
26,0 (90)						
28,0 (95)						
30,0 (100)						

Luffing Jib Length 27,4 m (90 ft)	Boom m (ft)	18,3 (60)	24,4 (80)	30,5 (100)	42,7 (140)	51,8 (170)
	Radius 10,0 (35)		-	-	-	-
12,0 (40)		33,7 (73.9)	33,4 (73.2)	32,8 (72.1)	-	-
14,0 (50)		31,4 (66.4)	31,2 (65.4)	30,7 (62.7)	25,3 (53.0)	-
16,0 (55)		28,7 (59.3)	28,4 (59.4)	27,1 (57.1)	23,2 (49.7)	-
18,0 (60)		24,5 (53.1)	25,1 (54.5)	24,2 (52.8)	21,4 (46.8)	-
20,0 (70)		21,4 (43.5)	22,1 (45.1)	22,0 (45.0)	19,8 (41.5)	-
24,0 (80)		16,9 (36.7)	17,6 (38.1)	17,5 (38.0)	17,0 (37.1)	-
26,0 (90)		15,1 (27.9)	15,9 (31.5)	15,8 (32.7)	15,8 (32.6)	-
28,0 (95)		11,6 (22.0)	13,3 (25.1)	14,1 (27.8)	14,3 (30.4)	-
30,0 (100)					11,7 (23.0)	-

Luffing Jib Length 36,6 m (120 ft)	Boom m (ft)	18,3 (60)	24,4 (80)	30,5 (100)	42,7 (140)	51,8 (170)
	Radius 12,0 (40)		-	-	-	-
14,0 (50)		23,9 (50.6)	23,6 (50.2)	23,2 (49.5)	21,5 (46.9)	-
18,0 (60)		20,9 (45.7)	20,8 (45.6)	20,7 (45.3)	19,3 (42.2)	-
20,0 (70)		19,5 (41.3)	19,5 (41.4)	19,5 (41.3)	18,0 (38.0)	-
24,0 (80)		17,1 (37.1)	17,2 (37.5)	17,1 (37.4)	15,7 (34.3)	-
30,0 (100)		12,7 (27.5)	13,0 (28.1)	12,9 (28.0)	12,9 (27.9)	-
36,0 (120)		8,4 (17.4)	9,6 (19.8)	10,1 (21.9)	10,1 (21.9)	-
42,0 (140)						
48,0 (160)						
- (170)						

Luffing Jib Length 48,8 m (160 ft)	Boom m (ft)	18,3 (60)	24,4 (80)	30,5 (100)	42,7 (140)	51,8 (170)
	Radius 12,0 (40)		-	-	-	-
14,0 (50)		32,7 (72.7)	32,5 (72.5)	32,2 (71.9)	-	-
18,0 (60)		13,4 (29.3)	13,3 (29.2)	13,3 (29.1)	12,4 (27.3)	10,9 (24.0)
20,0 (70)		12,4 (26.2)	12,4 (26.3)	12,4 (26.2)	12,1 (25.9)	10,6 (23.3)
24,0 (80)		10,8 (23.5)	10,8 (23.6)	10,8 (23.6)	10,7 (23.5)	10,2 (22.5)
30,0 (100)		8,6 (18.8)	8,7 (18.9)	8,8 (19.1)	8,8 (19.2)	8,8 (19.1)
36,0 (120)		6,9 (15.1)	7,0 (15.2)	7,0 (15.3)	7,2 (15.6)	7,2 (15.7)
42,0 (140)		5,5 (12.0)	5,6 (12.2)	5,7 (12.3)	5,8 (12.6)	5,9 (12.7)
48,0 (160)		4,5 (9.7)	4,5 (9.8)	4,6 (10.0)	4,7 (10.2)	4,8 (10.3)
- (170)				- (7.1)	- (9.2)	- (9.5)

Meets ANSI B30.5 Requirements - Capacities do not exceed 75% of static tipping load.
NOTICE: This capacity chart is for reference only and must not be used for lifting purposes.

Luffing jib load charts

32

Liftcrane Luffing Jib Capacities - Series 2 Luffing Jib No. 155 on Boom No. 84

44 680 kg (98,500 lb) Counterweight 19 960 kg (44,000 lb) Carbody Counterweight

360° Rating

kg (lb) x 1 000

75° Boom Angle

Boom m (ft)	18,3 (60)	24,4 (80)	30,5 (100)	42,7 (140)	51,8 (170)
Radius					
14,0 (50)	- (64.9)				
18,0 (60)	23,8 (51.5)	23,3 (50.3)	- (48.8)		
20,0 (70)	20,8 (42.5)	20,3 (41.4)	19,7 (40.2)	- (37.3)	
24,0 (80)	16,5 (35.8)	16,2 (35.0)	15,7 (34.0)	14,5 (31.5)	- (29.3)
26,0 (90)			14,1 (29.1)	13,1 (27.1)	- (25.2)
30,0 (100)				10,8 (23.5)	- (21.9)
32,0 (110)					
36,0 (120)					
38,0 (130)					
40,0 (135)					

Boom m (ft)	18,3 (60)	24,4 (80)	30,5 (100)	42,7 (140)	51,8 (170)
Radius					
14,0 (50)					
18,0 (60)					
20,0 (70)	20,5 (41.7)	- (40.6)			
24,0 (80)	16,2 (35.2)	15,8 (34.2)	15,3 (33.1)		
26,0 (90)	14,7 (30.3)	14,3 (29.4)	13,8 (28.4)	12,7 (26.1)	
30,0 (100)	12,2 (26.4)	11,8 (25.7)	11,4 (24.8)	10,5 (22.7)	
32,0 (110)	11,2 (23.2)	10,8 (22.6)	10,5 (21.8)	9,6 (20.0)	
36,0 (120)			8,9 (19.3)	8,2 (17.7)	
38,0 (130)				7,6 (15.8)	
40,0 (135)					

Boom m (ft)	18,3 (60)	24,4 (80)	30,5 (100)	42,7 (140)	51,8 (170)
Radius					
- (85)	- (31.8)	- (30.9)			
26,0 (90)	14,3 (29.5)	13,9 (28.6)	- (27.6)		
30,0 (100)	11,9 (25.7)	11,5 (24.9)	11,0 (23.9)	- (21.8)	
32,0 (110)	10,9 (22.6)	10,5 (21.9)	10,1 (21.0)	9,2 (19.1)	
36,0 (120)	9,3 (20.1)	9,0 (19.4)	8,6 (18.6)	7,8 (16.9)	
38,0 (130)	8,6 (17.9)	8,3 (17.3)	8,0 (16.6)	7,2 (15.0)	
42,0 (140)	7,4 (16.0)	7,2 (15.5)	6,9 (14.9)	6,2 (13.4)	
48,0 (160)				5,0 (10.8)	
54,0 (180)					
58,0 (190)					

Boom m (ft)	18,3 (60)	24,4 (80)	30,5 (100)	42,7 (140)	51,8 (170)
Radius					
- (85)					
26,0 (90)					
30,0 (100)	10,0 (21.7)				
32,0 (110)	9,3 (19.5)	9,7 (20.5)	- (20.0)		
36,0 (120)	8,0 (17.4)	8,5 (18.4)	8,1 (17.6)		
38,0 (130)	7,5 (15.6)	7,9 (16.4)	7,5 (15.6)		
42,0 (140)	6,5 (14.0)	6,8 (14.6)	6,4 (13.9)		
48,0 (160)	5,2 (11.2)	5,4 (11.8)	5,2 (11.2)		
54,0 (180)	4,2 (9.2)	4,4 (9.6)	4,2 (9.1)		
58,0 (190)			- (8.2)		

model 555



Meets ANSI B30.5 Requirements - Capacities do not exceed 75% of static tipping load.
NOTICE: This capacity chart is for reference only and must not be used for lifting purposes.

Luffing jib load charts

Liftcrane Luffing Jib Capacities - Series 2 Luffing Jib No. 155 on Boom No. 84

44 680 kg (98,500 lb) Counterweight 19 960 kg (44,000 lb) Carbody Counterweight

360° Rating

kg (lb) x 1 000

65° Boom Angle

33

Boom m (ft)	18,3 (60)	24,4 (80)	30,5 (100)	42,7 (140)	51,8 (170)
Radius					
20,0 (70)	- (40.1)				
24,0 (80)	15,6 (33.9)	- (32.3)			
26,0 (90)	14,1 (29.0)	13,5 (27.8)	12,7 (26.2)		
30,0 (100)			10,6 (22.9)		
32,0 (110)			9,7 -	8,3 (17.2)	
36,0 (120)				7,0 (15.2)	- (12.9)
38,0 (130)				6,5 -	- (11.5)
42,0 (140)					
44,0 (150)					
46,0 (155)					

Boom m (ft)	18,3 (60)	24,4 (80)	30,5 (100)	42,7 (140)	51,8 (170)
Radius					
20,0 (70)					
24,0 (80)					
26,0 (90)	- (28.3)				
30,0 (100)	11,4 (24.7)	10,8 (23.4)			
32,0 (110)	10,4 (21.7)	9,9 (20.6)	9,2 (19.3)		
36,0 (120)	8,9 (19.2)	8,4 (18.3)	7,9 (17.1)	- (14.2)	
38,0 (130)		7,8 -	7,3 (15.2)	6,1 (12.6)	
42,0 (140)				5,2 (11.3)	
44,0 (150)				4,8 (10.1)	
46,0 (155)				4,5 (9.4)	

Boom m (ft)	18,3 (60)	24,4 (80)	30,5 (100)	42,7 (140)	51,8 (170)
Radius					
32,0 (105)	10,1 (22.3)				
34,0 (115)	9,3 (19.7)	- (18.5)			
38,0 (130)	7,9 (16.6)	7,4 (15.5)	- (14.3)		
42,0 (140)	6,8 (14.8)	6,4 (13.9)	5,9 (12.8)		
44,0 (150)	6,4 (13.3)	6,0 (12.5)	5,5 (11.5)		
48,0 (160)			4,8 (10.3)		
50,0 (170)			4,4 -		
54,0 (180)					
60,0 (200)					
62,0 (205)					

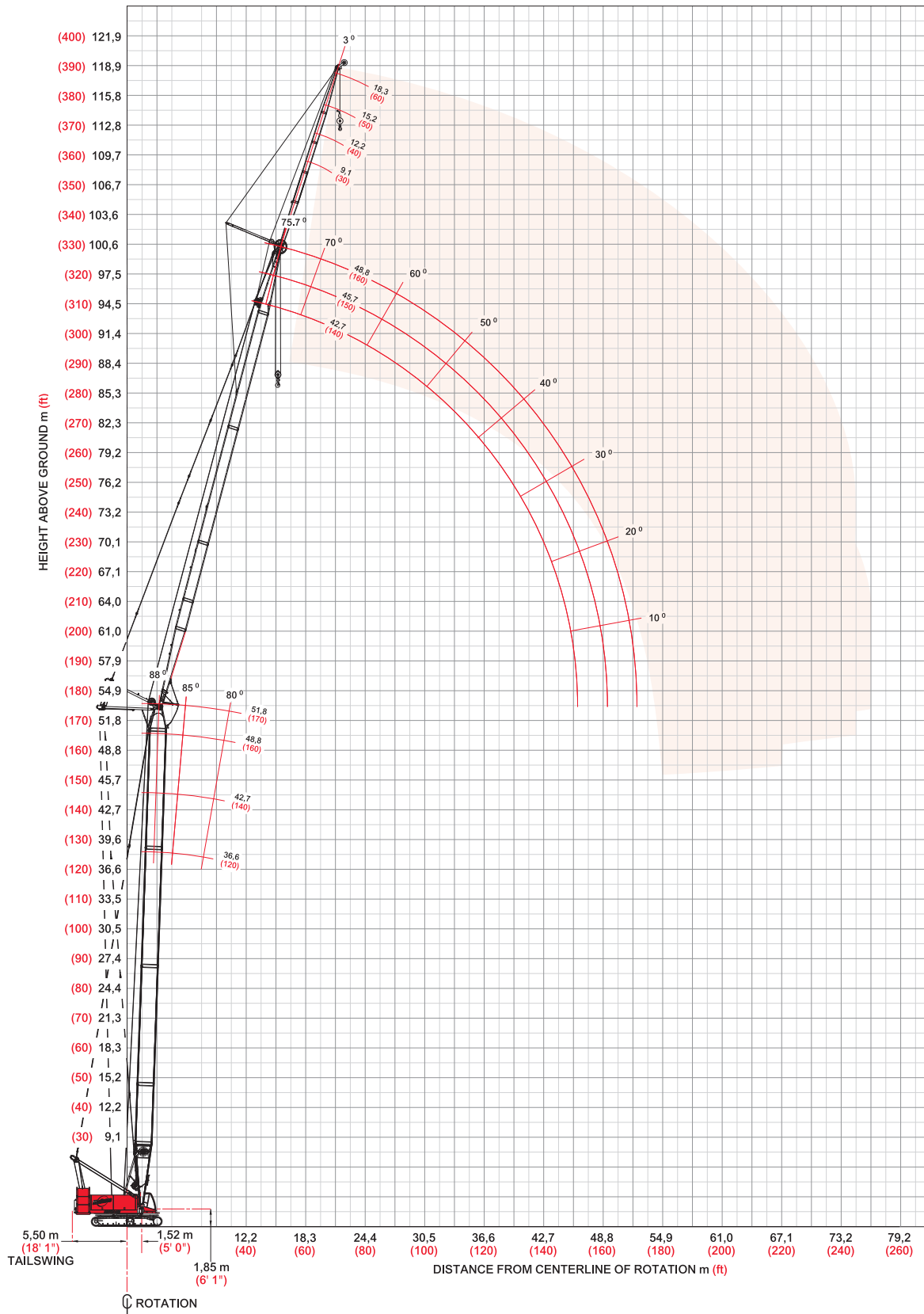
Boom m (ft)	18,3 (60)	24,4 (80)	30,5 (100)	42,7 (140)	51,8 (170)
Radius					
32,0 (105)					
34,0 (115)					
38,0 (130)	- (15.6)				
42,0 (140)	6,4 (13.9)	- (12.8)			
44,0 (150)	5,9 (12.4)	5,5 (11.5)	- (10.4)		
48,0 (160)	5,2 (11.2)	4,7 (10.3)	4,3 (9.3)		
50,0 (170)	4,8 (10.0)	4,4 (9.2)	4,0 (8.3)		
54,0 (180)	4,2 (9.0)	3,8 (8.3)	3,4 (7.4)		
60,0 (200)		3,1 (6.6)	2,7 (5.9)		
62,0 (205)			2,5 (5.5)		

Meets ANSI B30.5 Requirements - Capacities do not exceed 75% of static tipping load.
NOTICE: This capacity chart is for reference only and must not be used for lifting purposes.

fixed jib on luffing jib range diagram

No. 138A Fixed Jib on No. 155 Luffing Jib on No. 84 Main Boom

34



fixed jib on luffing jib load charts

Liftcrane Fixed Jib on Luffing Capacities - Series 2

Fixed Jib No. 138A at 3 Degree Angle on Luffing Jib No. 155 on Boom No. 84

44 680 kg (98,500 lb) Upperworks Counterweight 19 960 kg (44,000 lb) Carbody Counterweight

360° Rating

kg (lb) x 1 000

88° Boom Angle

35

Luffing Jib m (ft)	42,7 (140)			45,7 (150)			48,8 (160)		
	36,6 (120)	42,7 (140)	48,8 (160)	36,6 (120)	42,7 (140)	48,8 (160)	36,6 (120)	42,7 (140)	48,8 (160)
Radius									
16,8 (55)	12,0 (26.5)	11,3 (25.0)							
20,0 (70)	11,7 (25.8)	11,0 (24.2)	10,1 (22.3)	10,6 (23.2)	9,9 (21.8)	9,2 (20.1)	9,5 (20.7)	8,9 (19.5)	8,3 (18.2)
24,0 (80)	11,1 (24.3)	10,7 (23.7)	9,8 (21.7)	10,2 (22.5)	9,6 (21.3)	8,9 (19.7)	9,1 (20.0)	8,6 (18.9)	8,0 (17.7)
30,0 (100)	9,4 (20.6)	9,4 (20.6)	8,9 (19.4)	9,2 (20.2)	9,1 (20.1)	8,4 (18.4)	8,6 (18.9)	8,1 (17.9)	7,6 (16.7)
36,0 (120)	8,2 (17.9)	8,2 (17.9)	7,5 (16.5)	8,0 (17.6)	8,0 (17.6)	7,2 (15.8)	7,9 (17.3)	7,7 (16.8)	6,8 (15.0)
42,0 (140)	7,2 (15.8)	7,1 (15.4)	6,3 (13.7)	7,1 (15.6)	6,9 (15.1)	6,1 (13.4)	7,0 (15.4)	6,6 (14.5)	5,9 (12.9)
48,0 (160)	6,4 (14.0)	5,8 (12.6)	5,2 (11.3)	6,4 (13.8)	5,8 (12.6)	5,1 (11.2)	6,3 (13.6)	5,6 (12.3)	5,0 (10.9)
54,0 (180)	4,3 (7.9)	4,6 (8.7)	4,3 (9.4)	5,2 (11.1)	4,8 (10.5)	4,3 (9.4)	5,1 (11.1)	4,8 (10.4)	4,2 (9.2)
56,0 (190)				4,4 (6.8)	4,5 (7.5)	4,1 (8.2)	4,8 (9.6)	4,5 (9.6)	4,0 (8.5)
60,0 (200)							3,1 (5.6)	3,5 (6.3)	3,5 (6.9)

Luffing Jib m (ft)	42,7 (140)			45,7 (150)			48,8 (160)		
	36,6 (120)	42,7 (140)	48,8 (160)	36,6 (120)	42,7 (140)	48,8 (160)	36,6 (120)	42,7 (140)	48,8 (160)
Radius									
- (65)	- (14.6)	- (14.2)	- (13.8)	- (14.0)					
24,0 (80)	6,2 (13.8)	6,1 (13.5)	5,9 (13.0)	6,0 (13.2)	5,8 (12.9)	5,6 (12.5)	5,7 (12.6)	5,5 (12.2)	5,3 (11.7)
30,0 (100)	5,7 (12.7)	5,6 (12.4)	5,5 (12.1)	5,5 (12.2)	5,4 (12.0)	5,2 (11.6)	5,3 (11.7)	5,2 (11.4)	5,0 (11.0)
36,0 (120)	5,3 (11.8)	5,2 (11.6)	5,1 (11.3)	5,2 (11.4)	5,1 (11.2)	4,9 (10.9)	5,0 (11.0)	4,8 (10.7)	4,7 (10.4)
42,0 (140)	4,8 (10.6)	4,9 (10.7)	4,8 (10.7)	4,8 (10.4)	4,8 (10.5)	4,7 (10.3)	4,7 (10.3)	4,6 (10.1)	4,4 (9.8)
48,0 (160)	4,3 (9.4)	4,3 (9.4)	4,3 (9.4)	4,2 (9.2)	4,2 (9.3)	4,2 (9.3)	4,2 (9.1)	4,1 (9.1)	4,2 (9.1)
54,0 (180)	3,8 (8.4)	3,8 (8.4)	3,8 (8.4)	3,8 (8.3)	3,8 (8.3)	3,8 (8.3)	3,7 (8.2)	3,7 (8.2)	3,7 (8.1)
60,0 (200)	3,5 (7.6)	3,5 (7.7)	3,3 (7.1)	3,4 (7.5)	3,4 (7.5)	3,3 (7.1)	3,4 (7.4)	3,4 (7.4)	3,2 (7.0)
68,0 (220)				- (4.9)	- (5.5)	- (6.0)	2,8 (6.8)	2,9 (6.7)	2,6 (6.0)
70,0 (230)							2,1 (4.5)	2,3 (5.0)	

Meets ANSI B30.5 Requirements - Capacities do not exceed 75% of static tipping load.
 NOTICE: This capacity chart is for reference only and must not be used for lifting purposes.

fixed jib on luffing jib load charts

36

Liftcrane Fixed Jib on Luffing Capacities - Series 2

Fixed Jib No. 138A at 3 Degree Angle on Luffing Jib No. 155 on Boom No. 84

44 680 kg (98,500 lb) Upperworks Counterweight 19 960 kg (44,000 lb) Carbody Counterweight

360° Rating

kg (lb) x 1 000

85° Boom Angle

Luffing Jib m (ft)	42,7 (140)			45,7 (150)			48,8 (160)		
	36,6 (120)	42,7 (140)	48,8 (160)	36,6 (120)	42,7 (140)	48,8 (160)	36,6 (120)	42,7 (140)	48,8 (160)
Radius									
20,0 (70)	- (25.8)								
24,0 (80)	11,5 (25.3)	10,7 (23.7)	9,9 (21.9)	10,2 (22.6)	9,6 (21.3)	- (19.7)	9,1 (20.0)	- (18.9)	- (17.6)
26,0 (90)	11,1 (23.7)	10,6 (23.3)	9,8 (21.5)	10,1 (22.0)	9,5 (20.8)	8,8 (19.4)	8,9 (19.5)	8,4 (18.5)	7,9 (17.3)
30,0 (100)	10,0 (21.8)	10,0 (21.9)	9,6 (21.1)	9,7 (21.3)	9,2 (20.4)	8,6 (18.9)	8,6 (19.0)	8,1 (18.0)	7,6 (16.9)
36,0 (120)	8,6 (18.8)	8,6 (18.9)	8,7 (19.0)	8,4 (18.5)	8,5 (18.6)	8,2 (18.2)	8,2 (18.1)	7,8 (17.3)	7,3 (16.2)
42,0 (140)	7,5 (16.2)	7,4 (16.0)	7,2 (15.7)	7,4 (16.1)	7,3 (15.8)	7,2 (15.6)	7,3 (15.8)	7,2 (15.5)	7,0 (15.2)
48,0 (160)	6,1 (13.2)	6,0 (13.0)	5,9 (12.8)	6,0 (13.1)	5,9 (12.9)	5,8 (12.6)	5,9 (12.8)	5,8 (12.6)	5,7 (12.3)
54,0 (180)	5,0 (10.8)	4,9 (10.7)	4,8 (10.5)	5,0 (10.7)	4,9 (10.5)	4,8 (10.4)	4,8 (10.4)	4,8 (10.3)	4,7 (10.1)
60,0 (200)					3,7 (5.8)	3,8 (7.9)	4,0 (8.6)	3,9 (8.4)	3,8 (8.2)
64,0 (210)								2,1 (4.7)	3,0 (6.7)

Fixed Jib Length 9,1 m (30 ft)

Luffing Jib m (ft)	42,7 (140)			45,7 (150)			48,8 (160)		
	36,6 (120)	42,7 (140)	48,8 (160)	36,6 (120)	42,7 (140)	48,8 (160)	36,6 (120)	42,7 (140)	48,8 (160)
Radius									
24,0 (80)	- (14.0)								
26,0 (90)	6,2 (13.4)	6,0 (13.2)	5,8 (12.8)	5,9 (12.9)	5,8 (12.6)	- (12.2)	5,6 (12.2)	- (11.9)	- (11.5)
30,0 (100)	5,9 (12.9)	5,7 (12.7)	5,6 (12.4)	5,6 (12.4)	5,5 (12.2)	5,3 (11.8)	5,3 (11.8)	5,2 (11.5)	5,0 (11.1)
36,0 (120)	5,4 (12.0)	5,3 (11.8)	5,2 (11.6)	5,2 (11.6)	5,2 (11.4)	5,0 (11.1)	5,0 (11.1)	4,9 (10.9)	4,8 (10.5)
42,0 (140)	5,1 (11.1)	5,0 (11.1)	4,9 (10.9)	4,9 (10.9)	4,9 (10.8)	4,8 (10.5)	4,7 (10.5)	4,6 (10.3)	4,5 (10.0)
48,0 (160)	4,5 (9.8)	4,5 (9.9)	4,6 (10.0)	4,4 (9.6)	4,4 (9.7)	4,5 (9.8)	4,3 (9.5)	4,4 (9.6)	4,3 (9.6)
54,0 (180)	4,0 (8.7)	4,0 (8.8)	4,1 (8.9)	3,9 (8.6)	3,9 (8.7)	4,0 (8.8)	3,9 (8.5)	3,9 (8.5)	3,9 (8.6)
60,0 (200)	3,6 (7.9)	3,6 (8.0)	3,6 (8.0)	3,5 (7.8)	3,5 (7.8)	3,6 (7.9)	3,5 (7.7)	3,5 (7.7)	3,5 (7.8)
68,0 (220)		- (5.0)	- (6.8)	2,9 (7.1)	3,2 (7.2)	3,2 (7.2)	3,1 (7.0)	3,1 (7.1)	3,1 (7.1)
72,0 (240)								3,0 (-)	2,7 (4.9)

Fixed Jib Length 18,3 m (60 ft)

model 555



Meets ANSI B30.5 Requirements - Capacities do not exceed 75% of static tipping load.
NOTICE: This capacity chart is for reference only and must not be used for lifting purposes.

fixed jib on luffing jib load charts

Liftcrane Fixed Jib on Luffing Capacities - Series 2

Fixed Jib No. 138A at 3 Degree Angle on Luffing Jib No. 155 on Boom No. 84

44 680 kg (98,500 lb) Upperworks Counterweight 19 960 kg (44,000 lb) Carbody Counterweight

360° Rating

kg (lb) x 1 000

80° Boom Angle

37

Luffing Jib m (ft)	42,7 (140)			45,7 (150)			48,8 (160)		
	36,6 (120)	42,7 (140)	48,8 (160)	36,6 (120)	42,7 (140)	48,8 (160)	36,6 (120)	42,7 (140)	48,8 (160)
Radius									
28,0 (95)	- (23.7)								
32,0 (105)	10,1 (22.4)	9,8 (21.7)	9,2 (20.3)	9,4 (20.8)	8,8 (19.6)	8,2 (18.1)	8,3 (18.3)	7,8 (17.3)	
36,0 (120)	8,5 (18.5)	8,2 (17.9)	7,9 (17.2)	8,5 (18.4)	8,2 (17.7)	7,9 (17.0)	8,1 (17.8)	7,7 (16.9)	7,2 (15.9)
42,0 (140)	6,8 (14.7)	6,5 (14.2)	6,3 (13.6)	6,7 (14.6)	6,5 (14.0)	6,2 (13.4)	6,6 (14.2)	6,3 (13.7)	6,1 (13.1)
48,0 (160)	5,5 (11.9)	5,3 (11.4)	5,0 (10.9)	5,4 (11.8)	5,2 (11.3)	5,0 (10.8)	5,3 (11.4)	5,1 (10.9)	4,8 (10.4)
54,0 (180)	4,5 (9.7)	4,3 (9.3)	4,1 (8.9)	4,4 (9.6)	4,3 (9.2)	4,0 (8.7)	4,3 (9.3)	4,1 (8.8)	3,9 (8.4)
60,0 (200)		3,5 (7.6)	3,3 (7.2)	3,6 (7.8)	3,5 (7.5)	3,3 (7.1)	3,5 (7.5)	3,3 (7.2)	3,1 (6.8)
64,0 (210)					3,0 (6.7)	2,9 (6.4)	3,0 (6.8)	2,9 (6.4)	2,7 (6.1)
68,0 (220)								- (5.7)	2,3 (5.4)
- (225)									- (5.1)

Luffing Jib m (ft)	42,7 (140)			45,7 (150)			48,8 (160)		
	36,6 (120)	42,7 (140)	48,8 (160)	36,6 (120)	42,7 (140)	48,8 (160)	36,6 (120)	42,7 (140)	48,8 (160)
Radius									
- (110)	- (12.6)	- (12.4)		- (12.1)					
36,0 (120)	5,5 (12.2)	5,4 (12.0)	5,3 (11.8)	5,3 (11.7)	5,2 (11.5)	- (11.2)	5,0 (11.1)	- (10.8)	- (10.5)
42,0 (140)	5,2 (11.5)	5,1 (11.4)	5,0 (11.2)	5,0 (11.1)	4,9 (10.9)	4,8 (10.7)	4,8 (10.6)	4,7 (10.4)	4,6 (10.1)
48,0 (160)	4,8 (10.5)	4,9 (10.7)	4,8 (10.6)	4,7 (10.3)	4,7 (10.4)	4,6 (10.2)	4,6 (10.1)	4,5 (9.9)	4,4 (9.7)
54,0 (180)	4,2 (9.3)	4,3 (9.5)	4,2 (9.2)	4,2 (9.2)	4,3 (9.4)	4,1 (9.0)	4,1 (9.0)	4,2 (9.1)	4,0 (8.6)
60,0 (200)	3,8 (8.4)	3,7 (8.0)	3,5 (7.5)	3,7 (8.2)	3,6 (7.8)	3,4 (7.4)	3,7 (7.9)	3,4 (7.5)	3,2 (7.0)
68,0 (220)	3,0 (6.9)	2,9 (6.6)	2,7 (6.2)	3,0 (6.8)	2,8 (6.4)	2,6 (6.1)	2,8 (6.5)	2,6 (6.1)	2,5 (5.7)
70,0 (230)		2,6 (5.9)	2,5 (5.6)	2,8 (6.2)	2,6 (5.8)	2,5 (5.5)	2,6 (5.9)	2,5 (5.5)	2,3 (5.2)
72,0 (240)					2,4 (5.3)	2,3 (4.9)	2,5 (5.3)	2,3 (5.0)	2,1 (4.6)
76,0 (250)								2,0 (4.4)	1,8 (4.1)

Fixed Jib Length 9,1 m (30 ft)

Fixed Jib Length 18,3 m (60 ft)

Meets ANSI B30.5 Requirements - Capacities do not exceed 75% of static tipping load.
 NOTICE: This capacity chart is for reference only and must not be used for lifting purposes.

Manitowoc Crane CARE

38

Crane CARE is Manitowoc's comprehensive service and support program. It includes classroom and on-site training, prompt parts availability, expert field service, technical support and documentation — for every one of the more than 7,000 Manitowoc cranes currently in use throughout the world.

That's commitment you won't find anywhere else.

That's **Crane CARE**.

Service Training

Manitowoc specialists work with you in our training center and in the field to make sure you know how to get maximum performance, reliability and life from your cranes.

Manitowoc Cranes Technical Training Center provides valuable multi-level training, which is available for all models and attachments, in the following format:

- **Basic** – Provides technicians with the basic skills required in our Level I and II classes covering hydraulic and electrical theory and schematics, pump, motor, control, and LMI operation, and the use of meters and gauges.
- **Level 1** – This model-specific class covers theory and offers hands-on training and trouble shooting for all crane systems.
- **Level 2** – This model-specific class provides in depth coverage of all crane systems and components, and advanced troubleshooting of simulated faults. (Requires Level 1.)
- **Level 3/Master** – Covering all EPIC models and the 4100W, this class stresses high level system knowledge and trouble shooting of simulated faults. (Requires Level 2.)

Parts Availability

Genuine Manitowoc replacement parts are accessible through your distributor 24 hours a day, 7 days a week, 365 days a year.

Service Interval Kits

Provides all the parts required by Manitowoc's Preventative Maintenance Checklist.

Hydraulic Filter Kit

Consists of the following:

- Filter Element - Hydraulic in Tank (4)

Cummins Model QSZ15-C600 Diesel

– Service Interval Kits

200 Hour Kit

Consists of the following:

Engine

- Filter Oil (1)
- Filter Water (1)
- Filter Fuel (1)

1,000 Hour Kit

Consists of the following:

Engine

- Filter Air Cleaner - Primary (1)
- Filter Oil (1)
- Filter Water (14)
- Filter Fuel (1)

Hydraulic

- Filter Element - Hydraulic in Tank (4)
- Element - Hydraulic Tank Breather (1)

2,000 Hour Kit

Consists of the following:

Engine

- Filter, Air Cleaner - Primary (1)
- Filter, Air Cleaner - Safety (1)
- Filter, Oil (1)
- Filter, Water (1)
- Filter, Fuel (1)
- Ether, (Bottle) (1)
- Sensor, Coolant Level (10)
- Belt, Fan (1)
- Belt, Alternator (set of two) (1)
- Filter, Element (1)

Hydraulic

- Filter Element - No substitutions allowed
- Filter - Hydraulic In-Tank Suction (4)

Kit, Engine Coolant Additive (SCA) Test (1)

Kit, Seal (for hydraulic in tank filter) (1)

Seal, Radial (for air cleaner) (1)

Hydraulic Test Kit

Protect your investment by demanding Genuine Manitowoc Parts Service Kits. The Hydraulic Service Kit consist of the following:

- All hydraulic fittings to access all pressures and flows
- Hydraulic flow meters and pressure gauges to record hydraulic data.
- Electrical "Break out" harnesses to access voltages on all electrical circuits on all machines.
- Fluke Digital volt ohm meter, as used in all Manitowoc service literature.

Manitowoc Crane CARE

Hydraulic Test Kit with case

The above kit plus a custom heavy-duty carrying case.

U.S. Standard Tools Kit

All standard tools needed to properly maintain and service your crane. (Does not include torque wrench.)

Field Service

Factory-trained service experts are always ready to help maintain your crane's peak performance.

For a worldwide listing of dealer locations, please consult our website at: www.manitowoccranegroup.com

Technical Support

Manitowoc's dealer network and factory personnel are available 24 hours a day, 7 days a week, 365 days a year to answer your technical questions and more, with the help of computerized programs that simplify crane selection, lift planning, and ground-bearing calculations.

For a worldwide listing of dealer locations, please consult our website at: www.manitowoccranegroup.com

Technical Documentation

Manitowoc has the industry's most extensive documentation, and the easiest to understand, available in major languages and formats that include print, disk and videotape.

Additional copies available through your Authorized Manitowoc Distributor.

- Crane Operator's Manual
- Crane Parts Manual
- Crane Capacity Manual
- Crane Vendor Manual
- Service Manual (EPIC)
- Luffing Jib Operator's/Parts Manual
- Capacity Chart Manual - Attachments

CD rom versions of the Operator's and Parts Manuals are shipped with each crane.

Also available are the following CDs:

- Crane CARE Owner CD –
- Ground Bearing Pressure Estimator CD
- Crane Selection and Planning Software (CompuCRANE©)
- EPIC® Crane Library CD consisting of capacity charts, range diagrams, wire rope specifications, travel specifications, crane weights, counterweight arrangements, luffing jib raising procedures, operating range diagrams, drum and lagging charts, boom rigging drawings, jib rigging drawings, outline dimensions and wind condition charts.

Available from your Authorized Manitowoc Cranes Distributor, these VHS videos are available in NTSC, PAL and SECAM formats.

- Your Capacity Chart Video
- Respect the Limits Video
- Crane Safety Video
- Boom Inspection/Repair Video

Crane CARE Package

Manitowoc has assembled all of the available literature, CD's and videos listed above plus several Manitowoc premiums into one complete Crane CARE Package.



39



Regional Headquarters

Americas

Manitowoc, Wisconsin, USA

Tel: +1 920 684 6621

Fax: +1 920 683 6278

Shady Grove, Pennsylvania, USA

Tel: +1 717 597 8121

Fax: +1 717 597 4062

Regional Offices

Americas

Brazil

Alphaville

Tel: +55 11 4688 2716

Fax: +55 11 4191 1471

Mexico

Monterrey

Tel: +52 81 8124 0128

Fax: +52 81 8124 0129

Europe, Middle East, Africa

Algeria

Hydra

Tel: +21 3 21 48 1173

Fax: +21 3 21 48 1454

Czech Republic

Netvorice

Tel: +420 317 78 9313

Fax: +420 317 78 9314

France

Baudemont

Tel: +33 385 28 2589

Fax: +33 385 28 0430

Cergy

Tel: +33 130 31 3150

Fax: +33 130 38 6085

Decines

Tel: +33 472 81 5000

Fax: +33 472 81 5010

Germany

Langenfeld

Tel: +49 21 73 8909-0

Fax: +49 21 73 8909 30

Hungary

Budapest

Tel: +36 13 39 8622

Fax: +36 13 39 8622

Italy

Parabiago

Tel: +390 331 49 3311

Fax: +390 331 49 3330

Europe, Middle East, Africa

Ecully, France

Tel: +33 472 18 2020

Fax: +33 472 18 2000

Netherlands

Breda

Tel: +31 76 578 3999

Fax: +31 76 578 3978

Poland

Warsaw

Tel: +48 22 843 3824

Fax: +48 22 843 3471

Portugal

Alfena

Tel: +351 229 69 8840

Fax: +351 229 69 8848

Lisbon

Tel: +351 212 109 340

Fax: +351 212 109 349

Russia

Moscow

Tel: +7 495 641 2359

Fax: +7 495 641 2358

U.A.E.

Dubai

Tel: +971 4 3381 861

Fax: +971 4 3382 343

U. K.

Middlesex

Tel: +44 1 895 43 0053

Fax: +44 1 895 45 9500

Sunderland

Tel: +44 191 522 2000

Fax: +44 191 522 2052

Asia – Pacific

Australia

Melbourne

Tel: +61 3 9 336 1300

Fax: +61 3 9 336 1322

Sydney

Tel: +61 2 9 896 4433

Fax: +61 2 9 896 3122

Asia – Pacific

Shanghai, China

Tel: +86 21 51113579

Fax: +86 21 51113578

Singapore

Tel: +65 6264 1188

Fax: +65 6862 4142

China

Beijing

Tel: +86 10 58674761

Fax: +86 10 58674760

Xi'an

Tel: +86 29 87891465

Fax: +86 29 87884504

Korea

Seoul

Tel: +82 2 3439 0400

Fax: +82 2 3439 0405

Philippines

Makati City

Tel: +63 2 844 9437

Fax: +63 2 844 4712

Factories

U.S.A.

Manitowoc
Shady Grove

Brazil

Alphaville

France

Charlieu
La Clayette
Moulins

India

Calcutta
Puna

Italy

Niella Tanaro

Germany

Wilhelmshaven

Portugal

Fânzeres

China

Zhangjiagang

Constant improvement and engineering progress make it necessary that we reserve the right to make specification, equipment and price changes without notice. Illustrations shown may include optional equipment and accessories, and may not include all standard equipment.

