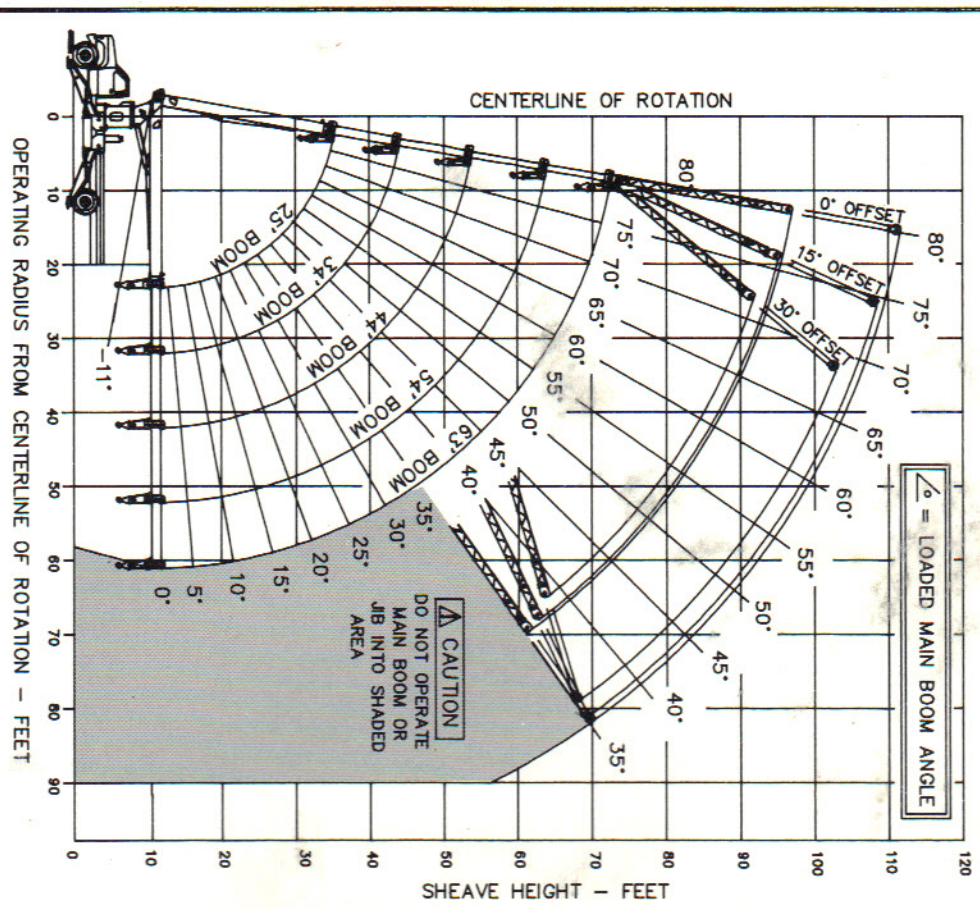


**1000 Series
Mounting Configurations**
Standard Mount Behind Cab
(Please contact factory for complete details).

**1000 Series
Optional Equipment**
Personnel Basket(s)
Radio Remote Controls
Heavy-Duty Two-Speed Winch
Oil Cooler
Tool Box
Roofer's Hydraulic Hose Reel
Load Blocks
Spin Resistant Cable
16' Flatbeds
(Please contact factory for complete details).

Pioneer ★ 1000 Series

RANGE DIAGRAM

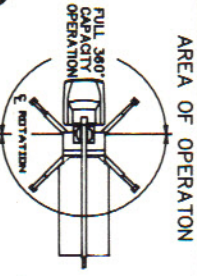


BOOM LOAD RATING IN LBS. WITH OUTRIGGERS EXTENDED AND MACHINE LEVEL

RAD FT.	25 FT BOOM		34 FT BOOM		44 FT BOOM		54 FT BOOM		63 FT BOOM				
	0° OFFSET	15° OFFSET	25 FT 0° OFFSET	25 FT 15° OFFSET	40 FT 0° OFFSET	40 FT 15° OFFSET	40 FT 0° OFFSET	40 FT 15° OFFSET	40 FT 0° OFFSET	40 FT 15° OFFSET			
4.5	80	30000											
5	77	24000											
8	68	16800	75	15660	79	14570							
10	63	14500	71	13470	76	12520	79	11590					
12	57	12700	67	11770	73	10940	77	10180	80	9520			
15	47	9200	62	10000	70	9290	74	8700	77	8170			
20	32	7350	52	7030	62	7310	68	6770	72	6400			
25			40	5650	54	5320	62	5380	67	5210			
30				4230	48	4420	56	4680	62	4380			
35					35	3630	49	3500	57	3440			
40						20	2750	41	2790	51	2810		
45								32	2470	44	2410		
50									18	1850	37	2040	
55											28	1670	
60												14	1160

JIB LOAD RATING IN LBS. WITH OUTRIGGERS EXTENDED AND MACHINE LEVEL

RAD FT.	25 FT 0° OFFSET		25 FT 15° OFFSET		25 FT 30° OFFSET		40 FT 0° OFFSET		40 FT 15° OFFSET		40 FT 30° OFFSET	
	20	78	4060	79	2070			78	2630			
25	75	3220	75	1780	79	1260	75	2200				
30	71	2680	72	1560	75	1130	72	1900	78	1300		
35	68	2250	68	1370	72	1020	69	1635	75	1160	80	
40	64	1900	64	1200	68	920	66	1430	72	1050	77	
45	60	1630	60	1060	64	830	63	1250	69	940	74	
50	57	1400	56	950	59	760	60	1100	65	840	70	
55	52	1220	52	840	55	690	57	980	62	760	67	
60	48	1060	47	720	49	610	53	870	58	690	63	
65	43	890	41	580	44	510	49	780	55	620	59	
70	38	700	35	450	37	410	45	690	51	570	55	
75	32	500					41	620	45	520	50	
80								42	470	45	430	



WARNING
 MIN. 220 FEET OF CABLE REQUIRED ON THIS MACHINE
 a) 3/16 DIA 6225 ERS TMC STRENGTH 15.5K (STD)
 b) 3/16 DIA ROTREST STRENGTH 3600 LB BREAK STRENGTH 6.0:1

KEEP AT LEAST 3 WRAPS OF LOADLINE ON DRUM AT ALL TIMES.
 ANTI-TWO-BLOCK SYSTEM MUST BE IN GOOD OPERATING CONDITION BEFORE OPERATING CRANE. REFER TO OWNER'S MANUAL.

THIS MACHINE WAS MANUFACTURED TO MEET OSHA REGULATIONS 1910.180 AND 1926.350 WHERE APPLICABLE AT THE TIME OF PRODUCTION.

CAUTION
 DEDUCTIONS FROM RATED LOADS FOR LOAD HANDLING DEVICES SUPPLIED BY PIONEER ENGINEERING

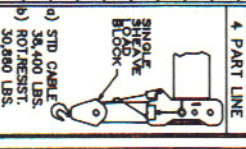
HANGER SHEAVE LOAD BLOCK 60 LBS
 SINGLE SHEAVE LOAD BLOCK 210 LBS
 DOUBLE SHEAVE LOAD BLOCK 340 LBS
 OVERHAUL BALL 110 LBS



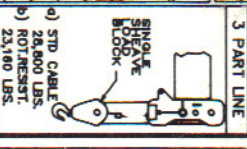
SERIES 1000
 LOAD RATING CHART



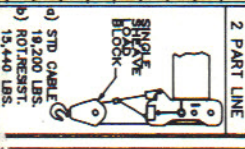
4 PART LINE
 a) STD CABLE 36,400 LBS. ROTREST.
 b) ROTREST. 30,800 LBS.



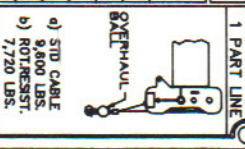
3 PART LINE
 a) STD CABLE 19,200 LBS. ROTREST.
 b) ROTREST. 15,440 LBS.



SINGLE SHEAVE LOAD BLOCK
 a) STD CABLE 28,600 LBS. ROTREST.
 b) ROTREST. 23,100 LBS.



SINGLE SHEAVE LOAD BLOCK
 a) STD CABLE 19,200 LBS. ROTREST.
 b) ROTREST. 15,440 LBS.



OVERHAUL
 a) STD CABLE 9,600 LBS. ROTREST.
 b) ROTREST. 7,720 LBS.

Pioneer 1000 Series

★ 1000 Series ★

The Pioneer Plus:

- ★ Patented "X" type outrigger design for superior stability
- ★ 500 degree rotation with no compromise over the front
- ★ Walk-across bridge and excellent operator vision field
- ★ Exclusive 25' to 40' off-set jib (straight or offset 15 and 30 degrees) allows operator to work further "up-and-over"

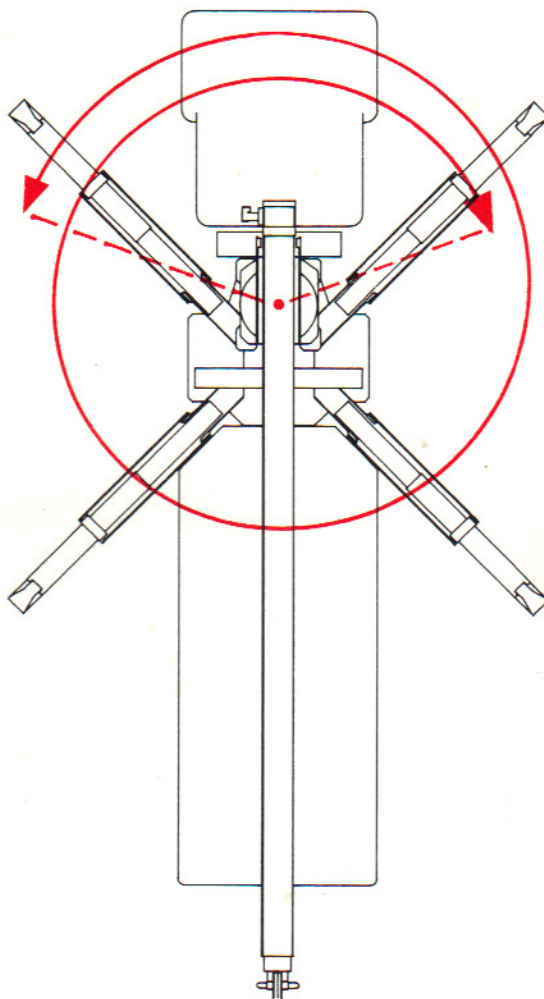
The Pioneer Details:

- ★ 30,000 lb. capacity on a single axle chassis
- ★ 3-section, 63 ft. proportional boom
- ★ 73' 6" maximum sheave height
- ★ With standard two-stage jib, 112' maximum sheave height

Additional Standard Equipment:

- ★ Dial-a-Swing rotation speed control for maximum fine-tuning
- ★ Radio ATB System
- ★ Capacity Alert System with indicator gauge at each control station
- ★ Dual air actuated foot throttles
- ★ Air Shift PTO
- ★ Winch cable tension roller
- ★ Rear underride bumper
- ★ 75 gallon hydraulic reservoir
- ★ 3-sheave boom tip
- ★ Pioneer installation of your crane

Pioneer Engineering's patented "X" outrigger design gives the crane operator something not previously available in the 50 year history of this industry ... full stability over the sides, back, and most important, over the front of the crane ... and the outriggers never leave the ground. Pioneer achieves this 360 degree "work zone" without a front bumper outrigger. With Pioneer, you need just one crane to get maximum work-ability!



Pioneer Engineering utilizes the "X" outrigger design and goes one step further. Instead of just 375 degrees of rotation, Pioneer gives the operator a full 500 degree "work zone." This truly allows working over the front of the unit with no compromise. Compared to other manufacturers, Pioneer gives you full stability and total access to the job site. It's a tough combination to beat.

PIONEER ENGINEERING