

Link-Belt® HC-218A lifting crane capacities — open throat boom PCSA Class 12-470 Refer to Notes page 10.

Boom — tubular: 60" (1.52 m) wide, 50" (1.27 m) deep with open throat top section, 1½" (35 mm) diameter boom pendants, boom live mast, and boom midpoint suspension pendants as required.

Jib — tubular: 32" (0.81 m) wide, 24" (0.61 m) deep.

Counterweights — Refer to charts below.

Mounting — rubber tire mobile base: FMC, 8 x 4 drive 260" (6.60 m) wheelbase 11' 0" (3.35 m) wide.

Counterweights					
"A" upper		"AB" upper		"A" bumper	
Pounds	kilograms	Pounds	kilograms	Pounds	kilograms
21,000	9 526	33,000	14 969	13,500	6 124

Open throat boom and boom + jib machine can lift off ground unassisted, without load ①.

Standard HC-218A must be equipped with the counterweight combinations below when indicated boom and boom + jib lengths are used	Minimum/maximum boom or boom + jib lengths allowed	On outriggers									
		Over rear				Over side					
		Boom		Boom + jib		Boom		Boom + jib			
		Feet	meters	Feet	meters	Feet	meters	Feet	meters		
"A" upper and "A" bumper	Minimum	40	12.19	← Not applicable →				40	12.19	← Not applicable →	
	Maximum	220	67.06	← Not applicable →				180	54.86	← Not applicable →	
"AB" upper and "A" bumper	Minimum	40	12.19	40 + 30	12.19 + 9.14	40	12.19	40 + 30	12.19 + 9.14		
	Maximum	230	70.10	200 + 60	60.96 + 18.29	200	60.96	170 + 60	51.82 + 18.29		
On tires ②											
"A" upper and "A" bumper	Minimum	40	12.19	← Not applicable →				40	12.19	← Not applicable →	
	Maximum	160	48.77	← Not applicable →				120	36.58	← Not applicable →	

① Limited to 95% of available stability with machine standing level on firm supporting surface.

② Air pressure in tires to be 100 p.s.i. (690 kPa).

Machine travel with open throat boom or boom + jib, with no load ①.

Standard HC-218A must be equipped with the counterweight combinations below when the indicated boom and boom + jib lengths are used.	Minimum/maximum boom or boom + jib lengths allowed	On tires ②									
		Jobsite moves at 1 m.p.h. (1.61 km/h), boom at 80° boom angle, upper facing rear only.				Over the road travel at 5 m.p.h. (8.05 km/h), boom horizontal and supported with standard suspension, and boom live mast pinned in 24' (7.32 m) position.					
		Boom		Boom + jib		Boom		Boom + jib			
		Feet	meters	Feet	meters	Feet	meters	Feet	meters		
"A" upper and "A" bumper	Minimum	40	12.19	← Not applicable →				40	12.19	← Not applicable →	
	Maximum	220	67.06	← Not applicable →				130	39.62	← Not applicable →	
"AB" upper and "A" bumper	Minimum	40	12.19	40 + 30	12.19 + 9.14	40	12.19	40 + 30	12.19 + 9.14		
	Maximum	230	70.10	200 + 60	60.96 + 18.29	150	45.72	120 + 60	36.58 + 18.29		

① Limited to 85% of available stability with machine standing level on firm supporting surface.

② Air pressure in front and rear tires to be 100 p.s.i. (690 kPa).

Note: Hook block may be carried only when attached to mounting.

GENERAL INFORMATION ONLY

HC-218 Lifting crane capacities — open throat boom

PCSA Class 70
Refer to Notes page 7.

Boom — tubular: 60" (1.57 m) wide, 50" (1.27 m) deep with open throat top section, 1 3/8" (35 mm) boom pendants, boom live mast, and boom midpoint suspension pendants as required.

Mounting — rubber tire mobile base: FMC, 8 x 4 drive, 260" (6.60 m) wheelbase, 11'0" (3.35 m) wide.

Counterweights — Refer to charts page 1.

HC-218A open throat boom				"A" upper & "A" bumper counterweights						"AB" upper & "A" bumper counterweights								
Length	Radius		Boom point height	On outriggers		On tires (static)		On outriggers only										
	Feet	Meters		Angle	Degrees	Feet	Meters	Over rear	Over side and 360° swing	Over rear	Over side and 360° swing							
40' (12.19 m)	12	3.66	77.7	46° 5'	14.15	192,200*	87,180*	192,200*	87,180*	88,400*	40,097*	67,000*	30,390*	200,000*	90,718*	200,000*	90,718*	
	13	3.96	76.3	46° 2'	14.08	180,100*	81,646*	180,100*	81,646*	85,500*	38,782*	62,700*	28,440*	187,300*	84,957*	187,300*	84,957*	
	14	4.27	74.8	45° 11'	14.00	169,300*	76,793*	166,500*	75,823*	82,800*	37,557*	58,900*	26,716*	176,200*	79,922*	176,200*	79,922*	
	15	4.57	73.3	45° 8'	13.92	159,600*	72,393*	155,000*	70,306*	80,300*	36,423*	55,400*	25,129*	165,600*	75,341*	165,600*	75,341*	
	16	4.88	71.8	45° 4'	13.82	151,100*	68,537*	145,000*	65,770*	78,000*	35,380*	52,400*	23,768*	157,300*	71,350*	157,300*	71,350*	
	17	5.18	70.3	45° 0'	13.72	143,300*	64,999*	136,500*	61,915*	75,800*	34,382*	49,600*	22,498*	149,200*	67,675*	149,200*	67,675*	
	18	5.49	68.7	44° 3'	13.68	136,300*	61,824*	129,200*	58,604*	73,800*	33,475*	47,000*	21,318*	141,900*	64,364*	138,000*	62,595*	
	19	5.79	67.2	44° 3'	13.48	130,000*	58,967*	122,700*	55,655*	71,900*	32,613*	44,800*	20,320*	135,300*	61,371*	131,200*	59,511*	
	20	6.10	65.6	43° 9'	13.35	124,100*	56,290*	116,900*	53,024*	70,200*	31,842*	42,700*	19,368*	129,200*	58,604*	125,000*	56,699*	
	25	7.62	58.5	41° 1'	12.52	101,100*	45,858*	89,000	40,369	53,300	24,176	31,500	14,288	105,300*	47,763*	101,500*	46,039*	
	30	9.14	48.5	37° 4'	11.37	85,100*	38,600*	65,000	29,710	42,300	19,186	24,500	11,113	88,700*	40,233*	88,700*	35,017	
	35	10.67	38.0	32° 0'	9.75	71,300	32,341	51,400	23,314	34,700	15,739	19,800	8,981	76,300*	34,609*	60,800	27,578	
	40	12.19	24.1	23° 9'	7.23	58,500	26,535	41,900	19,005	29,200	13,244	16,300	7,393	60,800*	27,578*	49,800	22,588	
	50' (15.24 m)	12	3.66	80.2	56° 7'	17.26	191,800*	86,999*	191,800*	86,999*	88,000*	39,916*	66,800*	30,299*	197,000*	89,357*	197,000*	89,357*
		13	3.96	79.0	56° 5'	17.20	179,700*	81,510*	179,700*	81,510*	85,100*	38,600*	62,500*	28,349*	186,900*	84,776*	186,900*	84,776*
		14	4.27	77.9	56° 3'	17.14	168,900*	76,611*	166,300*	75,432*	82,400*	37,376*	58,600*	26,580*	175,800*	79,741*	175,800*	79,741*
		15	4.57	76.7	56° 0'	17.07	159,200*	72,211*	154,800*	70,216*	79,900*	36,242*	55,200*	25,038*	165,800*	75,205*	165,800*	75,205*
		16	4.88	75.5	55° 9'	17.00	150,800*	68,401*	144,800*	65,880*	77,600*	35,198*	52,100*	23,632*	156,900*	71,168*	156,900*	71,168*
		17	5.18	74.3	55° 6'	16.91	143,000*	64,863*	136,300*	61,824*	75,400*	34,200*	49,300*	22,362*	148,800*	67,494*	148,800*	67,494*
		18	5.49	73.1	55° 2'	16.83	135,900*	61,643*	129,100*	58,558*	73,400*	33,293*	46,800*	21,228*	141,500*	64,183*	141,500*	64,183*
19		5.79	71.9	54° 11'	16.73	129,700*	58,830*	122,500*	55,565*	71,600*	32,477*	44,600*	20,234*	135,000*	61,234*	135,000*	61,234*	
20		6.10	70.7	54° 7'	16.63	123,800*	56,154*	116,700*	52,934*	69,800*	31,660*	42,500*	19,277*	128,900*	58,468*	128,900*	58,468*	
25		7.62	64.5	52° 6'	16.00	100,900*	45,767*	89,400	40,851	53,400	24,221	31,600	14,333	105,100*	47,672*	105,100*	47,672*	
30		9.14	58.0	49° 9'	15.16	84,900*	38,509*	68,400	29,846	42,300	19,186	24,600	11,758	88,500*	40,142*	88,500*	40,142*	
35		10.67	50.9	46° 2'	14.08	71,500	32,431	51,600	23,405	34,800	15,785	19,900	9,026	74,500*	33,792*	74,500*	33,792*	
40		12.19	43.1	41° 6'	12.66	58,800	26,671	42,200	19,141	29,300	13,290	16,400	7,438	64,200*	29,120*	64,200*	29,120*	
50		15.24	21.6	25° 9'	7.84	42,800	19,413	30,300	13,743	21,800	9,888	11,700	5,307	48,300*	21,908*	48,300*	21,908*	
60' (18.29 m)		13	3.96	80.9	66° 7'	20.30	179,600*	81,465*	179,600*	81,465*	84,900*	38,509*	62,400*	28,304*	182,400*	82,739*	182,400*	82,739*
		14	4.27	79.9	66° 5'	20.25	168,700*	76,521*	166,400*	75,477*	82,100*	37,239*	58,600*	26,580*	175,600*	79,650*	175,600*	79,650*
		15	4.57	78.9	66° 3'	20.19	159,100*	72,166*	154,900*	70,261*	79,800*	36,105*	55,200*	25,038*	165,400*	75,114*	165,400*	75,114*
		16	4.88	78.0	66° 0'	20.13	150,600*	68,311*	144,800*	65,880*	77,300*	35,062*	52,100*	23,632*	156,800*	71,123*	156,800*	71,123*
		17	5.18	77.0	65° 10'	20.06	142,800*	64,773*	136,300*	61,824*	75,200*	34,170*	49,300*	22,362*	148,700*	67,449*	148,700*	67,449*
		18	5.49	76.0	65° 7'	19.99	135,900*	61,643*	129,100*	58,558*	73,200*	33,202*	46,700*	21,182*	141,400*	64,137*	141,400*	64,137*
	19	5.79	75.0	65° 4'	19.91	129,500*	58,740*	122,600*	55,610*	71,300*	32,341*	44,600*	20,230*	134,900*	61,189*	134,900*	61,189*	
	20	6.10	74.0	65° 0'	19.82	123,700*	56,109*	116,700*	52,934*	69,500*	31,524*	42,500*	19,277*	128,800*	58,422*	128,800*	58,422*	
	25	7.62	69.0	63° 4'	19.31	100,700*	45,676*	89,900	40,777	53,600	24,312	31,800	14,424	104,900*	47,581*	104,900*	47,581*	
	30	9.14	63.8	61° 2'	18.65	84,800*	38,464*	66,200	30,027	42,500	19,277	24,700	11,203	88,300*	40,052*	88,300*	40,052*	
	35	10.67	58.3	58° 5'	17.81	71,800	32,567	51,900	23,541	34,900	15,830	20,000	9,071	75,900*	34,427*	75,900*	34,427*	
	40	12.19	52.5	55° 0'	16.76	59,000	26,762	42,500	19,277	29,400	13,335	16,500	7,484	66,600*	30,209*	66,600*	30,209*	
	50	15.24	39.2	45° 3'	13.80	43,000	19,504	30,300	13,834	21,900	9,933	11,800	5,352	48,800	22,135	48,800	22,135	
	60	18.29	19.7	27° 7'	8.40	33,300	15,104	23,300	10,568	17,000	7,711	8,700	3,946	36,000	16,200	36,000	16,200	
	70' (21.34 m)	15	4.57	80.5	76° 5'	23.29	158,500*	71,894*	154,400*	70,034*	79,100*	35,879*	54,700*	24,811*	160,000*	72,574*	160,000*	72,574*
		16	4.88	79.7	76° 3'	23.23	150,100*	68,084*	144,400*	65,498*	76,800*	34,835*	51,600*	23,405*	155,600*	70,578*	155,600*	70,578*
		17	5.18	78.9	76° 0'	23.18	142,300*	64,546*	135,900*	61,643*	74,700*	33,883*	48,900*	22,180*	148,200*	67,232*	148,200*	67,232*
		18	5.49	78.0	75° 10'	23.10	135,500*	61,461*	128,700*	58,377*	72,700*	32,976*	46,300*	21,007*	140,900*	63,911*	140,900*	63,911*
		19	5.79	77.2	75° 7'	23.05	129,100*	58,558*	122,200*	55,428*	70,800*	32,174*	44,200*	20,048*	134,400*	60,962*	134,400*	60,962*
		20	6.10	76.4	75° 5'	22.98	123,200*	55,882*	116,300*	52,752*	69,000*	31,297*	42,100*	19,096*	128,300*	58,195*	128,300*	58,195*

Refer to page 7.

GENERAL INFORMATION ONLY

HC-218A open throat boom				"A" upper & "A" bumper counterweights												"AB" upper & "A" bumper counterweights											
Length	Radius		Angle Degrees	Boom point height		On outriggers						On tires (static)						On outriggers only									
	Feet	meters		Feet	meters	Pounds	kilograms	Over side and 360° swing	Pounds	kilograms	Over rear	Pounds	kilograms	Over side	Pounds	kilograms	Over rear	Pounds	kilograms	Over side and 360° swing	Pounds	kilograms					
70' (21.34 m)	25	7.62	72.1	74' 0"	22.54	100,300*	45,495*	90,000	40,823	53,400	24,221	31,700	14,378	104,500*	47,400*	101,000*	45,812*	77,900	35,334	87,900*	39,870*	77,900	35,334				
	30	9.14	67.8	72' 2"	21.99	84,400*	38,283*	66,200	30,027	42,300	19,186	24,600	11,158	87,900*	39,870*	77,900	35,334	61,300	27,770	75,600*	34,291*	61,300	27,770				
	35	10.67	63.3	69' 10"	21.29	71,800	32,567	51,900	23,541	34,700	15,739	19,900	9,026	66,200*	30,027*	50,200	22,770	42,000	19,232	29,200	13,244	11,700	5,307	36,400	16,510		
	40	12.19	58.6	67' 1"	20.45	59,000	26,761	42,400	19,232	29,200	13,244	11,700	5,307	48,800	22,135	38,400	17,200	28,000	12,700	22,400	10,600	4,800	2,400	10,600	4,800		
	50	15.24	48.4	59' 8"	18.19	42,900	19,459	30,500	13,834	21,800	9,888	11,700	5,307	33,300	15,104	23,300	10,568	7,711	8,600	3,900	30,700	13,925	22,400	10,160	7,711	8,600	
	60	18.29	36.2	48' 8"	14.84	33,300	12,156	18,500	8,391	17,500	6,123	8,600	3,900	13,500	6,123	13,500	6,123	2,902	2,902	3,900	1,736	17,200	7,711	8,600	3,900	17,200	7,711
	70	21.34	18.2	29' 2"	8.90	26,800	10,568	15,104	6,123	13,500	6,123	8,600	3,900	13,500	6,123	13,500	6,123	2,902	2,902	3,900	1,736	17,200	7,711	8,600	3,900	17,200	7,711
	80	24.38	17.0	30' 9"	9.37	22,000	9,979	14,900	5,488	12,100	5,488	8,700	3,900	11,500	5,488	11,500	5,488	2,416	2,416	3,900	1,496	14,900	6,758	10,900	4,944	14,900	6,758
	90	27.43	16.0	32' 2"	9.82	18,400	8,346	12,100	5,488	8,700	3,946	8,700	3,946	11,500	5,488	11,500	5,488	2,416	2,416	3,900	1,496	14,900	6,758	10,900	4,944	14,900	6,758
	100	30.48	15.2	33' 7"	10.23	15,500	7,030	9,900	4,490	8,500	3,855	8,500	3,855	11,500	5,488	11,500	5,488	2,416	2,416	3,900	1,496	14,900	6,758	10,900	4,944	14,900	6,758
80' (24.38 m)	17	5.18	80.3	86' 2"	26.27	141,600*	64,228*	135,700*	61,552*	74,100*	33,611*	48,400*	21,953*	141,600*	64,228*	141,600*	64,228*	138,800*	62,958*	133,900*	60,736*	133,900*	60,736*				
	18	5.49	79.6	86' 0"	26.22	134,900*	61,189*	128,300*	58,195*	72,100*	32,704*	45,900*	20,819*	138,800*	62,958*	137,000*	62,142*	133,900*	59,057*	127,800*	57,969*	127,800*	57,969*				
	19	5.79	78.8	85' 10"	26.16	128,500*	58,286*	121,700*	55,271*	70,200*	31,842*	43,800*	19,867*	127,800*	57,969*	123,900*	56,207*	123,900*	56,207*	123,900*	56,207*	123,900*	56,207*				
	20	6.10	78.1	85' 8"	26.10	122,700*	55,655*	115,900*	52,571*	68,500*	31,071*	41,700*	18,914*	127,800*	57,969*	123,900*	56,207*	123,900*	56,207*	123,900*	56,207*	123,900*	56,207*				
	25	7.62	74.4	84' 5"	25.73	99,800*	45,268*	90,000	40,823	53,200	24,131	31,500	14,288	104,000*	47,173*	100,600*	45,631*	104,000*	47,173*	104,000*	47,173*	104,000*	47,173*				
	30	9.14	70.7	82' 10"	25.25	83,900*	38,056*	66,200	30,027	42,100	19,096	24,400	11,067	87,500*	39,689*	77,800*	35,289*	87,500*	39,689*	77,800*	35,289*	77,800*	35,289*				
	35	10.67	66.8	80' 11"	24.65	71,600	32,477	51,800	23,496	34,500	15,648	19,700	8,935	74,900*	33,974*	61,200	27,759	74,900*	33,974*	61,200	27,759	61,200	27,759				
	40	12.19	62.9	78' 6"	23.94	58,900	26,716	42,300	19,186	29,000	13,154	16,200	7,348	64,400*	29,211*	50,100	22,724	64,400*	29,211*	50,100	22,724	50,100	22,724				
	50	15.24	54.5	72' 5"	22.08	42,800	19,413	30,300	13,743	21,600	9,797	11,500	5,216	48,600	22,044	36,200	16,420	48,600	22,044	36,200	16,420	36,200	16,420				
	60	18.29	45.1	64' 0"	19.50	33,100	15,013	23,100	10,477	16,800	7,620	8,400	3,810	37,800	17,145	27,900	12,655	37,800	17,145	27,900	12,655	27,900	12,655				
70	21.34	33.8	51' 10"	15.80	26,000	12,065	18,400	8,346	13,400	6,078	6,300	2,857	30,600	13,879	22,300	10,115	30,600	13,879	22,300	10,115	22,300	10,115					
80	24.38	17.0	30' 9"	9.37	22,000	9,979	14,900	5,488	8,700	3,946	8,700	3,946	11,500	5,488	11,500	5,488	2,416	2,416	3,900	1,496	14,900	6,758	10,900	4,944	14,900	6,758	
90	27.43	16.0	32' 2"	9.82	18,400	8,346	12,100	5,488	8,700	3,946	8,700	3,946	11,500	5,488	11,500	5,488	2,416	2,416	3,900	1,496	14,900	6,758	10,900	4,944	14,900	6,758	
100	30.48	15.2	33' 7"	10.23	15,500	7,030	9,900	4,490	8,500	3,855	8,500	3,855	11,500	5,488	11,500	5,488	2,416	2,416	3,900	1,496	14,900	6,758	10,900	4,944	14,900	6,758	
90' (27.43 m)	18	5.49	80.7	96' 2"	29.31	127,700*	57,923*	127,700*	57,923*	127,700*	57,923*	127,700*	57,923*	127,700*	57,923*	127,700*	57,923*	127,700*	57,923*	127,700*	57,923*	127,700*	57,923*				
	19	5.79	80.1	96' 0"	29.26	125,500*	56,925*	121,200*	54,975*	121,200*	54,975*	121,200*	54,975*	125,500*	56,925*	125,500*	56,925*	125,500*	56,925*	125,500*	56,925*	125,500*	56,925*				
	20	6.10	79.4	95' 10"	29.21	122,100*	55,383*	115,400*	52,344*	115,400*	52,344*	115,400*	52,344*	122,100*	55,383*	122,100*	55,383*	122,100*	55,383*	122,100*	55,383*	122,100*	55,383*				
	25	7.62	76.2	94' 9"	28.88	99,300*	45,041*	89,900	40,777	53,000	24,040	31,300	14,197	103,500*	46,946*	100,100*	45,404*	103,500*	46,946*	100,100*	45,404*	100,100*	45,404*				
	30	9.14	72.9	93' 4"	28.46	83,500*	37,874*	66,100	30,982	41,900	19,005	24,200	10,976	87,000*	39,462*	77,700*	35,244*	87,000*	39,462*	77,700*	35,244*	77,700*	35,244*				
	35	10.67	69.5	91' 8"	27.94	71,500	32,431	51,700	23,450	34,300	15,558	19,500	8,845	73,100*	33,157*	61,100	27,714	73,100*	33,157*	61,100	27,714	61,100	27,714				
	40	12.19	66.1	89' 7"	27.32	58,700	26,825	42,200	19,141	28,800	13,063	16,000	7,257	62,800*	28,485*	49,900	22,634	62,800*	28,485*	49,900	22,634	49,900	22,634				
	50	15.24	58.9	84' 5"	25.73	42,600	19,323	30,200	13,698	21,400	9,706	11,300	5,125	47,900*	21,727*	36,100	16,374	47,900*	21,727*	36,100	16,374	36,100	16,374				
	60	18.29	51.1	77' 5"	23.59	32,900	14,923	23,000	10,432	16,600	7,529	8,200	3,719	37,100	17,100	27,700	12,564	37,100	17,100	27,700	12,564	27,700	12,564				
	70	21.34	42.4	68' 0"	20.72	26,500	12,020	18,200	8,255	13,200	5,987	6,100	2,766	30,400	13,789	22,200	10,069	30,400	13,789	22,200	10,069	22,200	10,069				
80	24.38	31.8	54' 9"	16.69	21,900	9,933	14,800	6,713	10,700	4,853	4,500	2,041	25,200	11,430	18,100	8,210	25,200	11,430	18,100	8,210	18,100	8,210					
90	27.43	16.0	32' 2"	9.82	18,400	8,346	12,100	5,488	8,700	3,946	8,700	3,946	11,500	5,488	11,500	5,488	2,416	2,416	3,900	1,496	14,900	6,758	10,900	4,944	14,900	6,758	
100	30.48	15.2	33' 7"	10.23	15,500	7,030	9,900	4,490	8,500	3,855	8,500	3,855	11,500	5,488	11,500	5,488	2,416	2,416	3,900	1,496	14,900	6,758	10,900	4,944	14,900	6,758	
100' (30.48 m)	20	6.10	80.5	106' 0"	32.30	114,900*	52,117*	114,900*	52,117*	114,900*	52,117*	114,900*	52,117*	114,900*	52,117*	114,900*	52,117*	114,900*	52,117*	114,900*	52,117*	114,900*	52,117*				
	25	7.62	77.6	105' 0"	32.01	98,800*	44,814*	89,900	40,777	52,700*	23,904	31,100	14,106	103,000*	46,720*	99,700*	45,223*	103,000*	46,720*	99,700*	45,223*	99,700*	45,223*				
	30	9.14	74.6	103' 9"	31.63	83,000*	37,648*	65,900	29,891	41,700	18,914	23,900	10,840	86,600*	39,281*	77,600*	35,198	86,600*	39,281*	77,600*	35,198	77,600*	35,198				
	35	10.67	71.6	102' 3"	31.17	71,100*	32,250*	51,500	23,360	34,000	15,422	19,200	8,708	71,700*	32,522*	60,900	27,623	71,700*	32,522*	60,900	27,623	60,900	27,623				
	40	12.19	68.6	100' 5"	30.62	58,500	26,535	42,000	19,050	28,500	12,927	15,700	7,121	61,500*	27,895*	49,700	22,543										

218A open throat boom

Length	Radius		Boom point height		On outriggers				On tires (static)				"AB" upper & "A" bumper counterweights							
	Feet		meters		Degrees		Angle		Over rear		Over side and 360° swing		Over rear		Over side		Over rear		Over side and 360° swing	
	Feet	meters	Feet	meters	Feet	meters	Pounds	kilograms	Pounds	kilograms	Pounds	kilograms	Pounds	kilograms	Pounds	kilograms	Pounds	kilograms	Pounds	kilograms
120' (36.58 m)	25	7.62	125'	5"	79.7	36.22	89,500*	40,596*	52,400	23,768	30,800	13,970	89,500*	40,596*	83,800*	38,011*	89,500*	40,596*	83,800*	38,011*
	30	9.14	124'	5"	77.2	37.91	82,200*	37,285*	41,300	18,733	23,600	10,704	41,300	18,733	69,600*	31,570*	69,600*	31,570*	69,600*	31,570*
	35	10.67	123'	2"	74.8	37.53	69,600*	31,570*	33,700	15,286	18,900	8,572	33,700	15,286	59,600*	27,034*	59,600*	27,034*	59,600*	27,034*
	40	12.19	121'	8"	72.3	37.08	58,300*	26,444*	28,200	12,791	15,400	6,985	28,200	12,791	45,400*	20,593*	45,400*	20,593*	45,400*	20,593*
	50	15.24	118'	0"	67.2	35.96	42,200	19,141*	20,800	9,434	10,700	4,853	20,800	9,434	36,300*	16,465*	36,300*	16,465*	36,300*	16,465*
	60	18.29	113'	3"	61.9	34.51	32,500	14,741*	16,000	7,257	7,600	3,447	16,000	7,257	29,800*	13,517*	29,800*	13,517*	29,800*	13,517*
	70	21.34	107'	3"	56.3	32.69	26,000	11,793*	12,600	5,715	5,500	2,494	12,600	5,715	20,900*	9,480*	20,900*	9,480*	20,900*	9,480*
	80	24.38	100'	10"	50.4	30.42	21,500	9,752*	10,100	4,581*	3,900	1,224	10,100	4,581*	17,900*	8,119*	17,900*	8,119*	17,900*	8,119*
	90	27.43	90'	6"	43.9	27.59	18,000	8,164*	8,200	3,719	2,700	—	8,200	3,719	15,300	6,939*	15,300	6,939*	15,300	6,939*
	100	30.48	80'	8"	36.5	23.98	15,200	6,894*	6,700	3,039	—	—	6,700	3,039	13,300	6,032*	13,300	6,032*	13,300	6,032*
	110	33.53	74'	8"	27.4	19.09	13,100	5,942*	5,400	2,449	—	—	5,400	2,449	11,600	5,261*	11,600	5,261*	11,600	5,261*
	120	36.58	66'	1"	11.01	11.01	11,300	5,125*	4,400	1,995	—	—	4,400	1,995	10,000	4,535*	10,000	4,535*	10,000	4,535*
130' (39.62 m)	25	7.62	135'	7"	80.5	41.32	82,900*	37,602*	52,200	23,677	30,600	13,879	52,200	23,677	82,900*	37,602*	82,900*	37,602*	82,900*	37,602*
	30	9.14	134'	7"	78.2	41.03	77,100*	34,971*	41,200	18,688	23,400	10,614	41,200	18,688	77,100*	34,971*	77,100*	34,971*	77,100*	34,971*
	35	10.67	133'	6"	76.0	40.68	68,800*	31,207*	33,500	15,195	18,800	8,527	33,500	15,195	68,800*	31,207*	68,800*	31,207*	68,800*	31,207*
	40	12.19	132'	1"	73.7	40.27	58,200	26,399*	28,000	12,700	15,300	6,939	28,000	12,700	58,200	26,399*	58,200	26,399*	58,200	26,399*
	50	15.24	128'	9"	69.0	38.24	42,100	19,096*	20,700	9,389	10,500	4,762	20,700	9,389	45,200*	20,502*	45,200*	20,502*	45,200*	20,502*
	60	18.29	124'	5"	64.2	37.93	32,300	14,651*	15,800	7,166	7,500	3,401	15,800	7,166	35,700*	16,793*	35,700*	16,793*	35,700*	16,793*
	70	21.34	119'	1"	59.2	36.29	25,800	11,702*	12,400	5,624*	5,300	2,404	12,400	5,624*	29,200*	13,244*	29,200*	13,244*	29,200*	13,244*
	80	24.38	112'	5"	54.0	34.28	21,300	9,661*	9,900	4,490	3,800	1,723	9,900	4,490	24,400*	11,067*	24,400*	11,067*	24,400*	11,067*
	90	27.43	104'	5"	48.3	31.82	17,800	8,073*	8,000	3,628	2,500	1,133	8,000	3,628	20,700	9,389*	20,700	9,389*	20,700	9,389*
	100	30.48	94'	5"	42.1	28.79	15,100	6,849*	6,500	2,948	—	—	6,500	2,948	17,700	8,028*	17,700	8,028*	17,700	8,028*
	110	33.53	85'	0"	35.0	24.96	12,900	5,851*	5,200	2,358	—	—	5,200	2,358	15,300	6,939*	15,300	6,939*	15,300	6,939*
	120	36.58	76'	0"	26.3	19.82	11,100	5,034*	4,200	1,905	—	—	4,200	1,905	13,300	6,032*	13,300	6,032*	13,300	6,032*
130	39.62	67'	4"	11.37	11.37	9,600	4,354*	3,300	1,496	—	—	3,300	1,496	11,600	5,261*	11,600	5,261*	11,600	5,261*	
140' (42.67 m)	30	9.14	144'	10"	79.1	44.14	70,700*	32,068*	41,000	18,597	23,200	10,523	41,000	18,597	70,700*	32,068*	70,700*	32,068*	70,700*	32,068*
	35	10.67	143'	9"	77.0	43.82	62,800*	28,485*	33,300	15,104	18,600	8,436	33,300	15,104	62,800*	28,485*	62,800*	28,485*	62,800*	28,485*
	40	12.19	142'	6"	74.9	43.44	56,600*	25,673*	27,800	12,609	15,100	6,849	27,800	12,609	56,600*	25,673*	56,600*	25,673*	56,600*	25,673*
	50	15.24	139'	5"	70.6	42.49	41,300	19,005*	20,500	9,298	10,300	4,672	20,500	9,298	44,400*	20,139*	44,400*	20,139*	44,400*	20,139*
	60	18.29	135'	5"	66.2	41.28	32,100	14,560*	15,600	7,076	7,300*	3,311	15,600	7,076	35,100*	15,921*	35,100*	15,921*	35,100*	15,921*
	70	21.34	130'	7"	61.6	39.79	25,600	11,611*	12,200	5,533	5,100	2,313	12,200	5,533	28,700*	13,018*	28,700*	13,018*	28,700*	13,018*
	80	24.38	124'	7"	56.9	37.98	21,100	9,570*	9,700	4,399	3,600	1,632	9,700	4,399	23,900*	10,840*	23,900*	10,840*	23,900*	10,840*
	90	27.43	117'	5"	51.8	35.79	17,600	7,983*	7,800	3,538	2,300	1,043	7,800	3,538	20,600	9,344*	20,600	9,344*	20,600	9,344*
	100	30.48	108'	9"	46.4	33.16	14,900	6,758*	6,300	2,857	—	—	6,300	2,857	17,500	7,937*	17,500	7,937*	17,500	7,937*
	110	33.53	98'	3"	40.5	29.94	12,700	5,760*	5,000	2,267	—	—	5,000	2,267	15,100	6,849*	15,100	6,849*	15,100	6,849*
	120	36.58	85'	0"	33.7	25.90	10,900	4,944*	4,000	1,814	—	—	4,000	1,814	13,100	5,942*	13,100	5,942*	13,100	5,942*
	130	39.62	67'	4"	20.52	20.52	9,300	4,309*	3,200	1,451	—	—	3,200	1,451	11,400	5,170*	11,400	5,170*	11,400	5,170*
140	42.67	58'	6"	11.72	11.72	8,200	3,719*	2,400	1,088	—	—	2,400	1,088	10,000	4,535*	10,000	4,535*	10,000	4,535*	
150' (45.72 m)	30	9.14	155'	0"	79.8	47.24	63,000*	28,576*	40,800	18,506	23,000	10,432	40,800	18,506	63,000*	28,576*	63,000*	28,576*	63,000*	28,576*
	35	10.67	154'	0"	77.9	46.94	57,700*	26,172*	33,100	15,013	18,400	8,346	33,100	15,013	57,700*	26,172*	57,700*	26,172*	57,700*	26,172*
	40	12.19	152'	10"	75.9	46.59	52,000*	23,586*	27,600	12,519	14,900	6,758	27,600	12,519	52,000*	23,586*	52,000*	23,586*	52,000*	23,586*
	50	15.24	150'	0"	71.9	45.71	40,800*	18,506*	20,300	9,207	10,100	4,581	20,300	9,207	40,800*	18,506*	40,800*	18,506*	40,800*	18,506*
	60	18.29	146'	4"	67.9	44.59	31,900	14,469*	15,400	6,985	7,100	3,220	15,400	6,985	33,900*	15,376*	33,900*	15,376*	33,900*	15,376*
	70	21.34	141'	10"	63.7	43.22	25,400	11,521*	12,000	5,443	4,900	2,222	12,000	5,443	28,200*	12,791*	28,200*	12,791*	28,200*	12,791*
	80	24.38	136'	5"	59.3	41.57	20,900	9,480*	9,500	4,309	3,300	1,496	9,500	4,309	23,400*	10,614*	23,400*	10,614*	23,400*	10,614*
	90	27.43	129'	11"	54.8	39.59	17,400	7,892*	7,600	3,447*	2,100	952	7,600	3,447*	20,100*	9,117*	20,100*	9,117*	20,100*	9,117*
	100	30.48	122'	2"	50.0	37.24	14,700	6,667*	6,100	2,766	—	—	6,100	2,766	17,200*	7,801*	17,200*	7,801*	17,200*	7,801*
	110	33.53	113'	0"	44.8	34.44	12,500	5,669*	4,800	2,177	—	—	4,800	2,177	14,800*	6,713*	14,800*	6,713*	14,800*	6,713*
	120	36.58	101'	10"	39.0	31.04	10,800	4,898*	3,800	1,723	—	—	3,800	1,723	12,900*	5,851*	12,900*	5,851*	12,900*	5,851*
	130	39.62	88'	0"	32.5	26.81	9,300	4,218*	3,000	1,360	—	—	3,000	1,360	11,200	5,080*	11,200	5,080*	11,200	5,080*
140	42.67	69'	6"	24.5	21.20	8,000	3,628*	2,200	997	—	—	2,200	997	9,800	4,445*	9,800	4,445*	9,800	4,445*	
150	45.72	59'	7"	12.4	12.06	6,900	3,129*	3,400	1,542	—	—	3,400	1,542	8,600	3,900*	8,600	3,900*	8,600	3,900*	

① ② ③ — Refer to page 7.

GENERAL INFORMATION ONLY

HC-218A open throat boom				"A" upper & "A" bumper counterweights				"AB" upper & "A" bumper counterweights									
Length	Radius		Boom point height	Angle		Feet		On outriggers				On tires (static)					
	Feet	meters		Degrees	Degrees	Feet	meters	Over rear	Over side and 360° swing	Over rear	Over side	Over rear	Over side and 360° swing	Pounds	kilograms	Pounds	kilograms
160' (48.77 m)	30	9.14	80.5	165' 2"	50.33	58,200*	26,399*	40,600	18,415	22,800	10,341	58,200*	26,399*	49,000*	22,226*	42,900*	19,459*
	35	10.67	78.6	164' 3"	50.05	50,800	24,267*	32,300	14,923	18,200	8,255	53,500*	24,267*	42,400*	19,232*	39,100*	17,735*
	40	12.19	76.8	163' 2"	49.72	48,400*	21,953*	27,300	12,383	14,700	6,667	48,400*	21,953*	34,900*	15,830*	32,300*	14,651*
	45	13.71	73.1	160' 5"	48.90	46,000*	19,781*	20,000	9,071	9,900	4,490	38,100*	17,281*	29,500*	13,380*	26,300	11,929
	50	15.24	69.3	157' 1"	47.87	43,600*	17,609*	15,200	6,894	6,800	3,084	31,700*	14,378*	23,000*	10,432*	20,800	9,434
	55	16.77	65.4	152' 11"	46.60	41,200*	15,437*	11,800	5,352	4,700	2,131	29,100*	12,867*	17,400*	7,892*	16,800	7,620
	60	18.30	61.4	147' 11"	45.07	38,800*	13,269*	9,300	4,218	3,100	1,406	26,500*	11,811*	15,600*	7,076*	11,400	5,170
	65	19.83	57.3	141' 11"	43.27	36,400*	11,099*	7,801	3,311	—	—	24,000*	10,907*	14,400*	6,350*	9,500	4,309
	70	21.36	52.9	135' 0"	41.14	34,000*	8,900	6,577	2,630	—	—	21,500*	9,752*	13,700	6,214	11,400	5,170
	75	22.89	48.3	126' 9"	38.64	31,600*	7,300	5,579	2,086	—	—	19,000*	8,482*	12,500	5,669	7,900	3,583
	80	24.42	43.3	117' 0"	35.67	29,200*	6,000	4,762	1,632	—	—	17,000*	7,331*	11,000	4,989	6,600	2,993
	85	25.95	37.8	105' 4"	32.10	26,800*	4,900	4,082	2,222	—	—	15,000*	6,180*	9,600	4,263	5,500	2,494
	90	27.48	31.4	90' 10"	27.68	24,400*	3,900	3,538	2,700	—	—	13,000*	5,071*	8,200	3,719	4,600	2,086
	95	29.01	23.7	71' 8"	21.85	22,000*	3,100	3,039	2,000	—	—	11,000*	4,000*	7,100	3,220	3,800	1,723
	100	30.54	12.0	40' 8"	12.38	20,000*	2,400	2,630	—	—	—	9,000*	3,100*	6,200	2,812	3,100	1,406
	105	32.07	79.3	174' 5"	53.16	49,000*	22,226*	22,226*	—	—	—	49,000*	22,226*	49,000*	22,226*	49,000*	22,226*
110	33.60	77.6	173' 5"	52.85	47,600*	21,232*	21,232*	—	—	—	47,600*	21,232*	47,600*	21,232*	47,600*	21,232*	
115	35.13	76.1	170' 10"	52.08	46,200*	20,238*	20,238*	—	—	—	46,200*	20,238*	46,200*	20,238*	46,200*	20,238*	
120	36.66	74.1	167' 8"	51.11	44,800*	19,244*	19,244*	—	—	—	44,800*	19,244*	44,800*	19,244*	44,800*	19,244*	
125	38.19	70.6	163' 10"	49.93	43,400*	18,250*	18,250*	—	—	—	43,400*	18,250*	43,400*	18,250*	43,400*	18,250*	
130	39.72	67.0	159' 2"	48.51	42,000*	17,256*	17,256*	—	—	—	42,000*	17,256*	42,000*	17,256*	42,000*	17,256*	
135	41.25	63.3	153' 8"	46.85	40,600*	16,262*	16,262*	—	—	—	40,600*	16,262*	40,600*	16,262*	40,600*	16,262*	
140	42.78	59.4	147' 4"	44.90	39,200*	15,268*	15,268*	—	—	—	39,200*	15,268*	39,200*	15,268*	39,200*	15,268*	
145	44.31	55.4	139' 10"	42.63	37,800*	14,274*	14,274*	—	—	—	37,800*	14,274*	37,800*	14,274*	37,800*	14,274*	
150	45.84	51.2	131' 2"	40.36	36,400*	13,280*	13,280*	—	—	—	36,400*	13,280*	36,400*	13,280*	36,400*	13,280*	
155	47.37	46.7	120' 11"	38.66	35,000*	12,286*	12,286*	—	—	—	35,000*	12,286*	35,000*	12,286*	35,000*	12,286*	
160	48.90	41.9	108' 8"	33.13	33,600*	11,292*	11,292*	—	—	—	33,600*	11,292*	33,600*	11,292*	33,600*	11,292*	
165	50.43	36.6	93' 7"	28.53	32,200*	10,298*	10,298*	—	—	—	32,200*	10,298*	32,200*	10,298*	32,200*	10,298*	
170	51.96	30.5	73' 9"	22.48	30,800*	9,304*	9,304*	—	—	—	30,800*	9,304*	30,800*	9,304*	30,800*	9,304*	
175	53.49	23.0	73' 9"	22.48	29,400*	8,310*	8,310*	—	—	—	29,400*	8,310*	29,400*	8,310*	29,400*	8,310*	
180	55.02	11.6	41' 8"	12.70	28,000*	7,316*	7,316*	—	—	—	28,000*	7,316*	28,000*	7,316*	28,000*	7,316*	
185	56.55	79.9	184' 7"	56.26	42,900*	19,459*	19,459*	—	—	—	42,900*	19,459*	42,900*	19,459*	42,900*	19,459*	
190	58.08	78.3	183' 7"	55.96	41,500*	18,465*	18,465*	—	—	—	41,500*	18,465*	41,500*	18,465*	41,500*	18,465*	
195	59.61	75.0	181' 3"	55.24	40,100*	17,471*	17,471*	—	—	—	40,100*	17,471*	40,100*	17,471*	40,100*	17,471*	
200	61.14	71.7	178' 3"	54.33	38,700*	16,477*	16,477*	—	—	—	38,700*	16,477*	38,700*	16,477*	38,700*	16,477*	
205	62.67	68.3	174' 7"	53.22	37,300*	15,483*	15,483*	—	—	—	37,300*	15,483*	37,300*	15,483*	37,300*	15,483*	
210	64.20	64.8	170' 3"	51.90	35,900*	14,489*	14,489*	—	—	—	35,900*	14,489*	35,900*	14,489*	35,900*	14,489*	
215	65.73	61.3	165' 2"	50.35	34,500*	13,495*	13,495*	—	—	—	34,500*	13,495*	34,500*	13,495*	34,500*	13,495*	
220	67.26	57.6	159' 4"	48.55	33,100*	12,501*	12,501*	—	—	—	33,100*	12,501*	33,100*	12,501*	33,100*	12,501*	
225	68.79	53.7	152' 6"	46.47	31,700*	11,507*	11,507*	—	—	—	31,700*	11,507*	31,700*	11,507*	31,700*	11,507*	
230	70.32	49.7	144' 7"	44.06	30,300*	10,513*	10,513*	—	—	—	30,300*	10,513*	30,300*	10,513*	30,300*	10,513*	
235	71.85	45.3	135' 5"	41.27	28,900*	9,519*	9,519*	—	—	—	28,900*	9,519*	28,900*	9,519*	28,900*	9,519*	
240	73.38	40.7	124' 8"	38.00	27,500*	8,525*	8,525*	—	—	—	27,500*	8,525*	27,500*	8,525*	27,500*	8,525*	
245	74.91	35.5	111' 1"	34.12	26,100*	7,531*	7,531*	—	—	—	26,100*	7,531*	26,100*	7,531*	26,100*	7,531*	
250	76.44	29.6	96' 3"	29.34	24,700*	6,537*	6,537*	—	—	—	24,700*	6,537*	24,700*	6,537*	24,700*	6,537*	
255	77.97	22.3	75' 9"	23.09	23,300*	5,543*	5,543*	—	—	—	23,300*	5,543*	23,300*	5,543*	23,300*	5,543*	
260	79.50	11.3	42' 8"	13.01	21,900*	4,549*	4,549*	—	—	—	21,900*	4,549*	21,900*	4,549*	21,900*	4,549*	
265	81.03	80.5	194' 9"	59.35	38,700*	17,554*	17,554*	—	—	—	38,700*	17,554*	38,700*	17,554*	38,700*	17,554*	
270	82.56	78.9	193' 10"	59.07	37,300*	16,560*	16,560*	—	—	—	37,300*	16,560*	37,300*	16,560*	37,300*	16,560*	
275	84.09	75.8	191' 7"	58.39	35,900*	15,566*	15,566*	—	—	—	35,900*	15,566*	35,900*	15,566*	35,900*	15,566*	
280	85.62	72.7	188' 9"	57.53	34,500*	14,572*	14,572*	—	—	—	34,500*	14,572*	34,500*	14,572*	34,500*	14,572*	
285	87.15	69.5	185' 4"	56.49	33,100*	13,578*	13,578*	—	—	—	33,100*	13,578*	33,100*	13,578*	33,100*	13,578*	
290	88.68	66.3	181' 3"	55.25	31,700*	12,584*	12,584*	—	—	—	31,700*	12,584*	31,700*	12,584*	31,700*	12,584*	
295	90.21	62.9	176' 6"	53.80	30,300*	11,590*	11,590*	—	—	—	30,300*	11,590*	30,300*	11,590*	30,300*	11,590*	

Not applicable

(continued)

GENERAL INFORMATION ONLY

Refer to page 7.

H 3A open throat boom			"A" upper & "A" counterweights				"AB" upper & "A" bumper counterweights						
Length	Radius		Angle Degrees	Boom point height		On outriggers				On tires (static)			
	Feet	meters		Feet	meters	Over rear Pounds	Over rear kilograms	Over side Pounds	Over side kilograms	Over rear Pounds	Over rear kilograms	Over side Pounds	Over side kilograms
					Over rear Pounds	Over rear kilograms	Over side Pounds	Over side kilograms	Over rear Pounds	Over rear kilograms	Over side Pounds	Over side kilograms	
					Over side and 360° swing Pounds	Over side and 360° swing kilograms			Over rear Pounds	Over rear kilograms	Over side Pounds	Over side kilograms	
190' (57.91 m)	100	30.48	59.5	171' 0"	52.13	13,900	6,304	3,764	14,200*	6,441*	11,000	4,989	
	110	33.53	55.9	164' 8"	50.20	11,700	5,307	3,039	12,400*	5,624*	9,100	4,127	
	120	36.58	52.2	157' 5"	47.99	9,900	4,490	2,449	11,100*	5,034*	7,500	3,401	
	130	39.62	48.3	149' 1"	45.45	8,400	3,810	1,905	9,800*	4,445*	6,200	2,812	
	140	42.67	44.1	139' 6"	42.52	7,100	3,220	1,496	8,800*	3,991*	5,100	2,313	
	150	45.72	39.6	128' 4"	39.12	6,100	2,766	1,133	7,700	3,492	4,200	1,905	
	160	48.77	34.5	115' 1"	35.08	5,100	2,313	—	6,700	3,039	3,400	1,542	
	170	51.82	28.8	98' 11"	30.14	4,300	1,950	—	5,800	2,630	2,700	1,224	
	180	54.86	21.7	77' 8"	23.68	3,600	1,632	—	5,000	2,267	2,000	907	
	190	57.91	11.0	43' 8"	13.30	2,900	1,315	—	4,300	1,950	—	—	
200' (60.96 m)	35	10.67	80.9	204' 10"	62.44	34,900*	15,830*	15,830*	34,900*	15,830*	34,900*	15,830*	
	40	12.19	79.5	204' 0"	62.18	32,700*	14,832*	14,832*	32,700*	14,832*	32,700*	14,832*	
	50	15.24	76.6	201' 10"	61.53	27,300*	12,383*	12,383*	27,300*	12,383*	27,300*	12,383*	
	60	18.29	73.6	199' 2"	60.72	20,500*	9,298*	9,298*	20,500*	9,298*	20,500*	9,298*	
	70	21.34	70.6	196' 0"	59.73	17,200*	7,801*	7,393	17,200*	7,801*	17,200*	7,801*	
	80	24.38	67.5	192' 2"	58.56	15,000*	6,803*	5,805	15,000*	6,803*	15,000*	6,803*	
	90	27.43	64.4	187' 8"	57.20	13,600*	6,168*	4,626	13,600*	6,168*	13,100	5,942	
	100	30.48	61.2	182' 6"	55.63	12,500*	5,669*	3,674	12,500*	5,669*	10,700	4,853	
	110	33.53	57.8	176' 8"	53.84	11,100*	5,034*	2,948	11,100*	5,034*	8,800	3,991	
	120	36.58	54.4	169' 11"	51.79	9,700*	4,399*	2,313	9,700*	4,399*	7,300	3,311	
130	39.62	50.8	162' 3"	49.46	8,200	3,719	1,814	8,600*	3,900*	6,000	2,721		
140	42.67	47.0	153' 6"	46.80	6,900	3,129	1,406	7,000*	3,492*	4,900	2,222		
150	45.72	42.9	143' 6"	43.74	5,800	2,630	1,043	7,000*	3,175*	3,900	1,769		
160	48.77	38.5	131' 11"	40.20	4,900	2,222	—	6,200*	2,812*	3,100	1,406		
170	51.82	33.6	118' 2"	36.01	4,100	1,859	—	5,600*	2,540*	2,400	1,088		
180	54.86	28.1	101' 5"	30.91	3,400	1,542	—	4,700	2,131	—	—		
190	57.91	21.2	79' 7"	24.26	2,700	1,224	—	4,000	1,814	—	—		
200	60.96	10.7	44' 7"	13.59	2,200	997	—	3,400	1,542	—	—		
210' (64.01 m)	40	12.19	80.0	214' 2"	65.27	29,600*	13,426*	13,426*	29,600*	13,426*	29,600*	13,426*	
	50	15.24	77.2	212' 2"	64.66	24,900*	11,294*	11,294*	24,900*	11,294*	24,900*	11,294*	
	60	18.29	74.4	209' 7"	63.89	18,800*	8,527*	8,527*	18,800*	8,527*	18,800*	8,527*	
	70	21.34	71.5	206' 7"	62.95	15,600*	7,076*	7,076*	15,600*	7,076*	15,600*	7,076*	
	80	24.38	68.6	202' 11"	61.85	13,300*	6,032*	5,715	13,300*	6,032*	13,300*	6,032*	
	90	27.43	65.7	198' 8"	60.57	11,900*	5,397*	4,535	11,900*	5,397*	11,900*	5,397*	
	100	30.48	62.6	193' 10"	59.09	10,900*	4,944*	3,583	10,900*	4,944*	10,500	4,762	
	110	33.53	59.5	188' 4"	57.41	9,700*	4,399*	2,857	9,700*	4,399*	8,600	3,900	
	120	36.58	56.3	182' 1"	55.50	8,600*	3,900*	2,222	8,600*	3,900*	7,100	3,220	
	130	39.62	53.0	175' 0"	53.33	7,600*	3,447*	1,723	7,600*	3,447*	5,800	2,630	
140	42.67	49.5	166' 11"	50.88	6,700	3,039	1,270	6,800*	3,084*	4,700	2,131		
150	45.72	45.8	157' 10"	48.10	5,600	2,540	907	6,100*	2,766*	3,700	1,678		
160	48.77	41.8	147' 5"	44.92	4,700	2,131	—	5,400*	2,449*	2,900	1,315		
170	51.82	37.5	135' 4"	41.25	3,800	1,723	—	4,900*	2,222*	2,200	997		
180	54.86	32.8	121' 2"	36.92	3,100	1,406	—	4,400*	1,995*	—	—		
190	57.91	27.4	103' 11"	31.66	2,500	1,133	—	3,800	1,723	—	—		
200	60.96	20.7	81' 5"	24.82	—	—	—	3,200	1,451	—	—		
210	64.01	10.5	45' 6"	13.88	—	—	—	2,600	1,179	—	—		
220' (67.06 m)	40	12.19	80.4	224' 4"	68.37	26,600*	12,065*	12,065*	26,600*	12,065*	26,600*	12,065*	
	50	15.24	77.8	222' 5"	67.78	20,700*	9,389*	9,389*	20,700*	9,389*	20,700*	9,389*	
	60	18.29	75.1	220' 0"	67.05	17,200*	7,801*	7,801*	17,200*	7,801*	17,200*	7,801*	
	70	21.34	72.4	217' 1"	66.16	14,200*	6,441*	6,441*	14,200*	6,441*	14,200*	6,441*	
	80	24.38	69.7	213' 7"	65.11	11,900*	5,397*	5,397*	11,900*	5,397*	11,900*	5,397*	
	90	27.43	66.8	209' 8"	63.90	10,400*	4,717*	4,399	10,400*	4,717*	10,400*	4,717*	
	100	30.48	64.0	205' 1"	62.50	9,400*	4,263*	3,421	9,400*	4,263*	9,400*	4,263*	
	110	33.53	61.0	199' 10"	60.92	8,600*	3,900*	2,721	8,600*	3,900*	8,400	3,810	
	120	36.58	58.0	194' 0"	59.12	7,700*	3,492*	2,131	7,700*	3,492*	6,800	3,084	

Not applicable

Ⓢ Ⓢ — Refer to page 7.

GENERAL INFORMATION ONLY

HC-218A open throat boom				"A" upper & "A" bumper counterweights				"AB" upper & "A" bumper counterweights						
Length	Radius		Boom point height	On outriggers		On tires (static)		On outriggers only		On outriggers only				
	Feet	meters		Over rear	Over side and 360° swing	Over rear	Over side	Over rear	Over side and 360° swing	Pounds	Kilograms	Pounds	Kilograms	
220' (67.06 m)	130	39.62	187' 4"	57.10	187' 4"	57.10	187' 4"	3 039*	1 632	6 700*	3 039*	6 700*	5 500	2 494
	140	42.67	179' 11"	54.89	179' 11"	54.89	179' 11"	2 721*	1 179	6 000*	2 721*	6 000*	4 400	1 995
	150	45.72	171' 6"	52.27	171' 6"	52.27	171' 6"	2 449*	—	5 400*	2 449*	5 400*	3 500	1 587
	160	48.77	162' 0"	49.37	162' 0"	49.37	162' 0"	1 995	—	4 800*	2 177*	4 800*	2 700	1 224
	170	51.82	151' 2"	46.07	151' 2"	46.07	151' 2"	1 632	—	4 300*	1 950*	4 300*	2 000	907
	180	54.86	138' 8"	42.27	138' 8"	42.27	138' 8"	1 315	—	3 900*	1 769*	3 900*	—	—
	190	57.91	124' 1"	37.81	124' 1"	37.81	124' 1"	1 043	—	3 600*	1 632*	3 600*	—	—
	200	60.96	106' 3"	32.40	106' 3"	32.40	106' 3"	—	—	2 900	1 315	2 900	—	—
	210	64.01	83' 3"	25.37	83' 3"	25.37	83' 3"	—	—	2 400	1 088	2 400	—	—
	230' (70.10 m)	40	12.19	234' 5"	71.46	234' 5"	71.46	234' 5"	—	—	24 100*	10 931*	24 100*	24 100*
50		15.24	232' 7"	70.90	232' 7"	70.90	232' 7"	—	—	18 700*	8 482*	18 700*	18 700*	8 482*
60		18.29	230' 4"	70.20	230' 4"	70.20	230' 4"	—	—	15 800*	7 166*	15 800*	15 800*	7 166*
70		21.34	227' 6"	69.35	227' 6"	69.35	227' 6"	—	—	13 000*	5 896*	13 000*	13 000*	5 896*
80		24.38	224' 3"	68.35	224' 3"	68.35	224' 3"	—	—	10 700*	4 853*	10 700*	10 700*	4 853*
90		27.43	220' 6"	67.20	220' 6"	67.20	220' 6"	—	—	9 100*	4 127*	9 100*	9 100*	4 127*
100		30.48	216' 2"	65.88	216' 2"	65.88	216' 2"	—	—	8 200*	3 719*	8 200*	8 200*	3 719*
110		33.53	211' 2"	64.38	211' 2"	64.38	211' 2"	—	—	7 200*	3 265*	7 200*	7 200*	3 265*
120		36.58	205' 8"	62.69	205' 8"	62.69	205' 8"	—	—	6 500*	2 948*	6 500*	6 500*	2 948*
130		39.62	199' 5"	60.79	199' 5"	60.79	199' 5"	—	—	5 800*	2 630*	5 800*	5 800*	2 630*
230' (70.10 m)	140	42.67	192' 6"	58.66	192' 6"	58.66	192' 6"	—	—	5 200*	2 358*	5 200*	5 200*	2 358*
	150	45.72	184' 8"	56.28	184' 8"	56.28	184' 8"	—	—	4 700*	2 131*	4 700*	4 700*	2 131*
	160	48.77	175' 11"	53.61	175' 11"	53.61	175' 11"	—	—	4 200*	1 905*	4 200*	4 200*	1 905*
	170	51.82	166' 0"	50.60	166' 0"	50.60	166' 0"	—	—	3 800*	1 723*	3 800*	3 800*	1 723*
	180	54.86	154' 10"	47.19	154' 10"	47.19	154' 10"	—	—	3 500*	1 587*	3 500*	3 500*	1 587*
	190	57.91	141' 11"	43.27	141' 11"	43.27	141' 11"	—	—	3 100*	1 406*	3 100*	3 100*	1 406*
	200	60.96	131' 3"	38.67	131' 3"	38.67	131' 3"	—	—	2 700	1 224	2 700	2 700	1 224
	210	64.01	108' 8"	33.11	108' 8"	33.11	108' 8"	—	—	2 100	952	2 100	2 100	952

permitted on boom when machine is equipped with "A" upper and "A" bumper counterweights.

permitted on boom when machine is equipped with "A" upper and "A" bumper counterweights.

Applicable only to machines with booms 40' (12.19 m) through 220' (67.06 m) long — without jib. "AB" upper and "A" bumper counterweights are required for boom 230' (70.10 m) long — without jib, and booms 40' (12.19 m) through 200' (60.96 m) — with jib. Jib is not

Capacities for 360° swing applicable only when front center jack and front and rear outriggers are set in proper working position.

Measured vertically from center of boom head sheave to ground with machine standing on tires.

lifting crane capacities; tubular boom with open throat top section.

- GENERAL INFORMATION ONLY**
- The capacities included in this chart are the maximum allowable, and are based on machine standing level on firm supporting surface under ideal job conditions. Capacities are based on 85% of minimum tipping loads unless marked with an asterisk (*).
 - Asterisk indicates capacities are based on factors other than those which would cause a tipping condition.
 - Capacities are based on freely suspended loads and make no allowance for such factors as the effect of wind, supporting surface conditions, inflation of tires, and operating speeds. Operator must reduce load ratings accordingly to take such conditions into account. Deduction from rated capacities must be made for weight of jib, hook block, ball/hook, sling, spreader bar, or other suspended gear.
 - Boom lengths exceeding 150' (45.72 m) — boom midpoint suspension pendants required.
 - Main boom lengths must not exceed 230' (70.10 m).
 - For lifting 200,000# (90 720 kg), 10 parts of 7/8" (22 mm) diameter, Type "N" wire rope are required. Check parts of line required for all capacities.
 - Jib cannot be used on boom lengths less than 40' (12.19 m) or longer than 200' (60.96 m).
 - Refer to charts page 1 when rigging machine with boom and boom plus jib.
 - Machine equipped with "AB" upper counterweight — do not swing over side until outriggers have been set.
 - Telescopic boom live mast, pinned in the extended (24' — 7.32 m) position, required for all open throat boom capacities.
 - Least stable position is over side.
 - When handling loads on main load hoist line with jib mounted on boom, reduce rated boom capacities as follows to compensate for jib weights —
 - 30' (9.14 m) jib — 2,000# (907 kg)
 - 45' (13.72 m) jib — 2,400# (1 089 kg)
 - 60' (18.29 m) jib — 3,200# (1 452 kg)
 - Capacities apply only to the machine as originally manufactured and normally equipped by FMC Corporation, Cable Crane and Excavator Division.

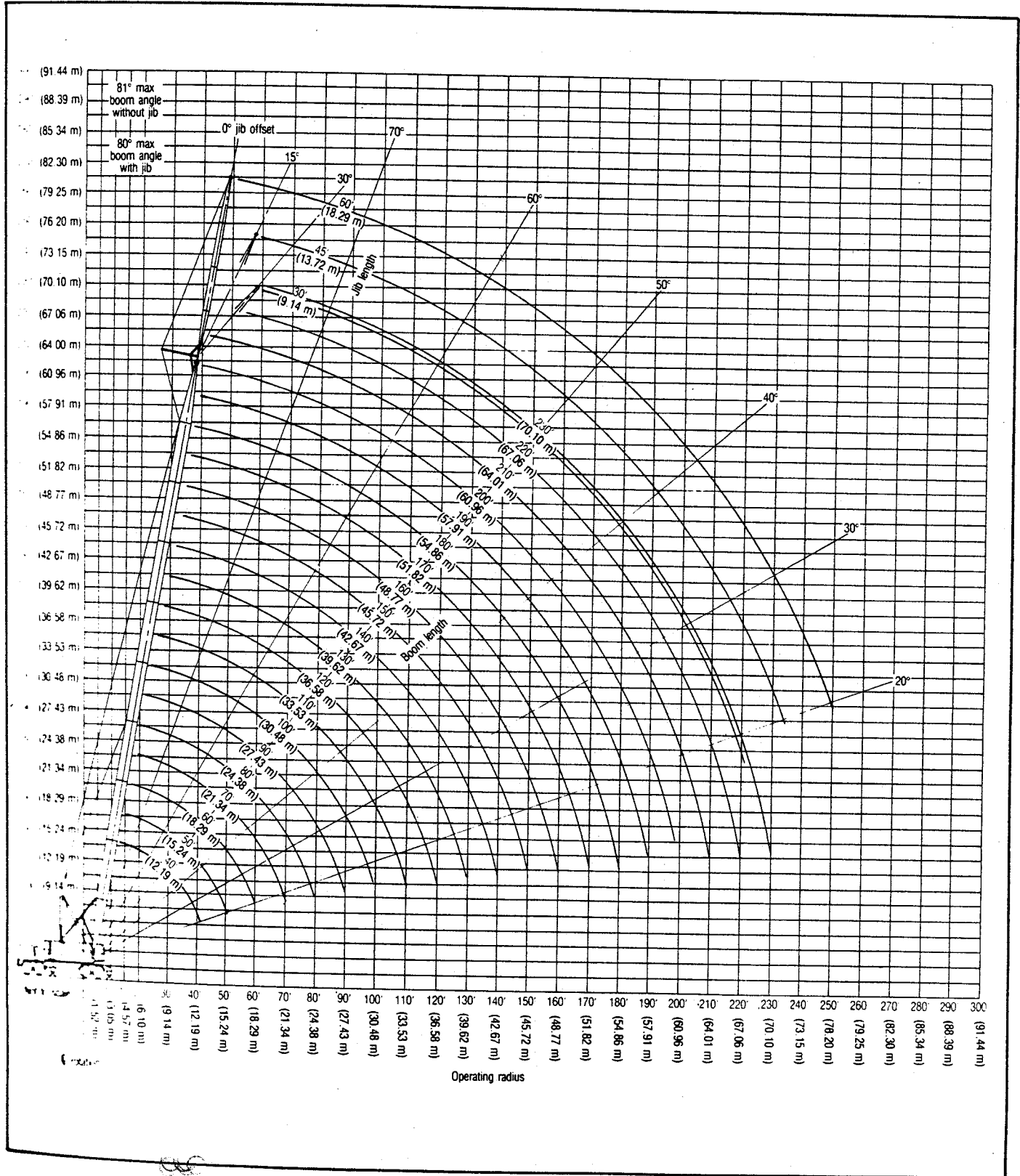
HC-218A boom/jib working ranges — open throat boom

Boom — tubular: 60" (1.52 m) wide, 50" (1.27 m) deep with open throat top section, 1 3/8" (35 mm) boom pendants, boom live mast, and boom midpoint suspension pendants as required.

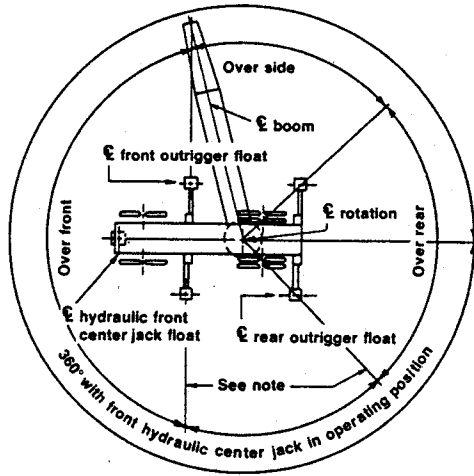
Jib — tubular: 32" (0.81 m) wide, 24" (0.61 m) deep.

Counterweights — Refer to charts page 1.

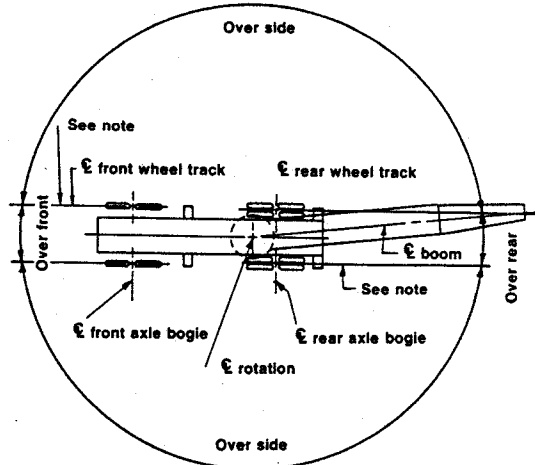
Mounting — rubber tire mobile base:
FMC, 8 x 4 drive, 260" (6.60 m) wheelbase, 11' 0" (3.35 m) wide.



HC-218A working areas



Rubber tire mobile base on outriggers



Rubber tire mobile base on tires

Note: These lines determine the limiting position of any load for operation within working areas indicated.

GENERAL INFORMATION ONLY

We are constantly improving our products and therefore reserve the right to change designs and specifications.



awc