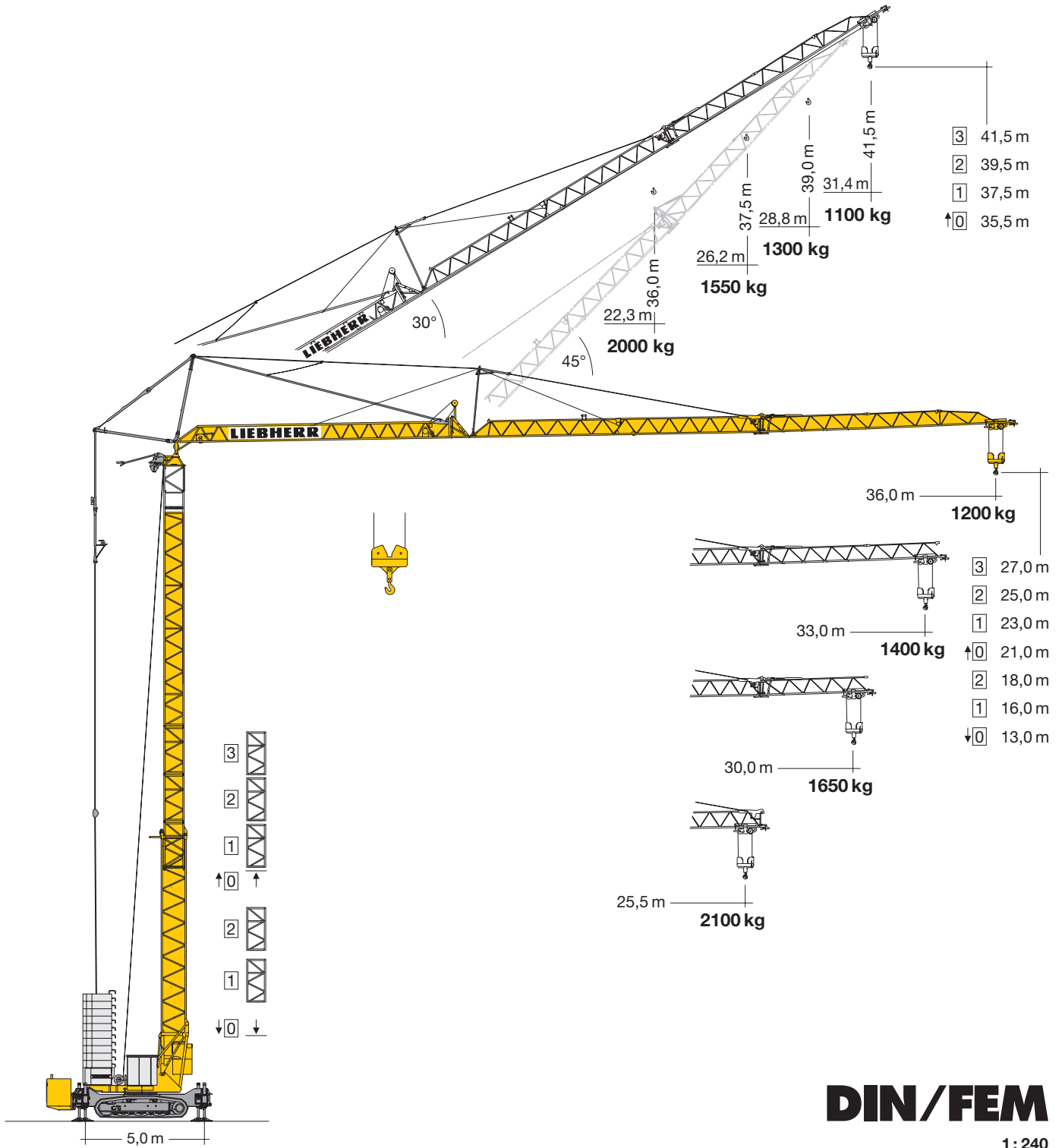


Turmdrehkran 42 KR.1

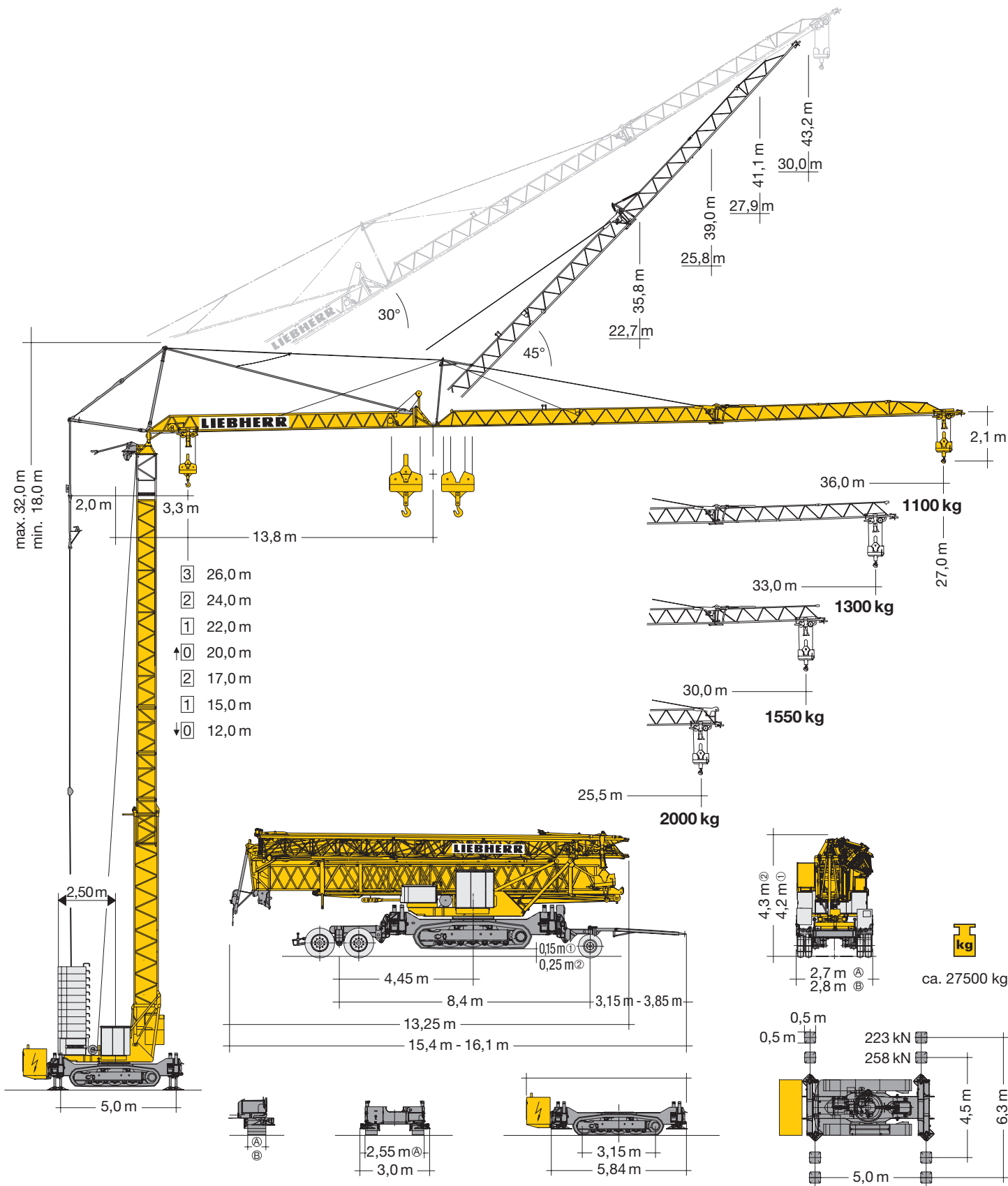
Tower Crane / Grue à tour / Gru a torre
Grúa torre / Guindaste de torre



DIN/FEM

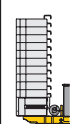

1:240

LIEBHERR



Gewicht

Weight / Poids / Peso / Peso / Pesos

	$r = 2,50 \text{ m}$	20820 kg		23020 kg (HH 26 m: + 900 kg)
--	----------------------	----------	---	---------------------------------

Kettenbreite / Chain width / Largeur de chaîne / Larghezza cingoli
Anchura de cadena / Comprimento dos rastros ④ = 0,5 m / ⑤ = 0,6 m

① 0,15 m \triangleq 4,2 m
② 0,25 m \triangleq 4,3 m

Ausladung und Tragfähigkeit

Radius and capacity / Portée et charge / Sbraccio e portata / Alcances y cargas / Alcance e capacidade de carga

		m/kg																			
m/kg		16,0	18,0	20,0	21,0	22,0	23,0	24,0	25,0	25,5	26,0	27,0	28,0	29,0	30,0	31,0	32,0	33,0	34,0	35,0	36,0
36,0	3,3 - 19,40 2500	2500	2500	2410	2280	2160	2050	1950	1860	1810	1770	1690	1620	1560	1490	1440	1380	1330	1290	1240	1200
33,0	3,3 - 20,18 2500	2500	2500	2500	2390	2260	2150	2040	1950	1900	1860	1780	1700	1630	1570	1510	1450	1400			
30,0	3,3 - 21,04 2500	2500	2500	2500	2500	2370	2250	2140	2040	2000	1950	1870	1790	1720	1650						
25,5	3,3 - 21,95 2500	2500	2500	2500	2500	2490	2370	2250	2150	2100											

		m/kg																			
m/kg		13,0	14,0	16,0	18,0	20,0	23,0	24,0	25,0	25,5	26,0	27,0	28,0	29,0	30,0	31,0	32,0	33,0	34,0	35,0	36,0
36,0	3,3 - 22,56 2000	2000	2000	2000	2000	2000	1950	1850	1760	1720	1680	1600	1530	1460	1400	1340	1290	1230	1190	1140	1100
33,0	3,3 - 23,46 2000	2000	2000	2000	2000	2000	2000	1950	1850	1800	1760	1680	1600	1530	1470	1410	1350	1300			
30,0	3,3 - 24,45 2000	2000	2000	2000	2000	2000	2000	2000	1950	1900	1850	1770	1690	1620	1550						
25,5	3,3 - 25,50 2000	2000	2000	2000	2000	2000	2000	2000	2000	2000											

		m/kg																			
m/kg		13,0	14,0	16,0	18,0	20,0	23,0	24,0	25,0	25,5	26,0	27,0	28,0	29,0	30,0	31,0	32,0	33,0	34,0	35,0	36,0
36,0	3,3 - 12,77 4000	3910	3580	3040	2630	2320	1950	1850	1760	1710	1670	1600	1520	1460	1400	1340	1280	1230	1190	1140	1100
33,0	3,3 - 13,25 4000	4000	3740	3180	2760	2430	2050	1940	1850	1800	1760	1680	1600	1530	1470	1410	1350	1300			
30,0	3,3 - 13,79 4000	4000	3930	3340	2900	2550	2150	2050	1950	1900	1850	1770	1690	1620	1550						
25,5	3,3 - 14,36 4000	4000	4000	3510	3050	2690	2270	2150	2050	2000											

		Auslegersteilstellung 30° / Elevated jib 30° / Flèche inclinée 30° Braccio inclinato a 30° / Pluma inclinada 30° / Lança inclinada 30°															
m/kg		16,0	18,0	20,0	22,3	23,0	24,0	25,0	26,0	26,2	27,0	28,0	28,7	29,0	30,0	31,0	31,4
36,0	3,0 - 15,91 2500	2480	2160	1900	1670	1610	1530	1450	1390	1370	1320	1270	1220	1210	1160	1120	1100
33,0	3,0 - 16,67 2500	2500	2280	2010	1770	1700	1620	1540	1470	1460	1400	1340	1300				
30,0	3,0 - 17,51 2500	2500	2420	2140	1880	1810	1720	1640	1560	1550							
25,5	3,0 - 18,45 2500	2500	2500	2270	2000												

Antriebe

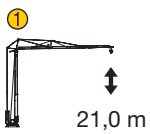
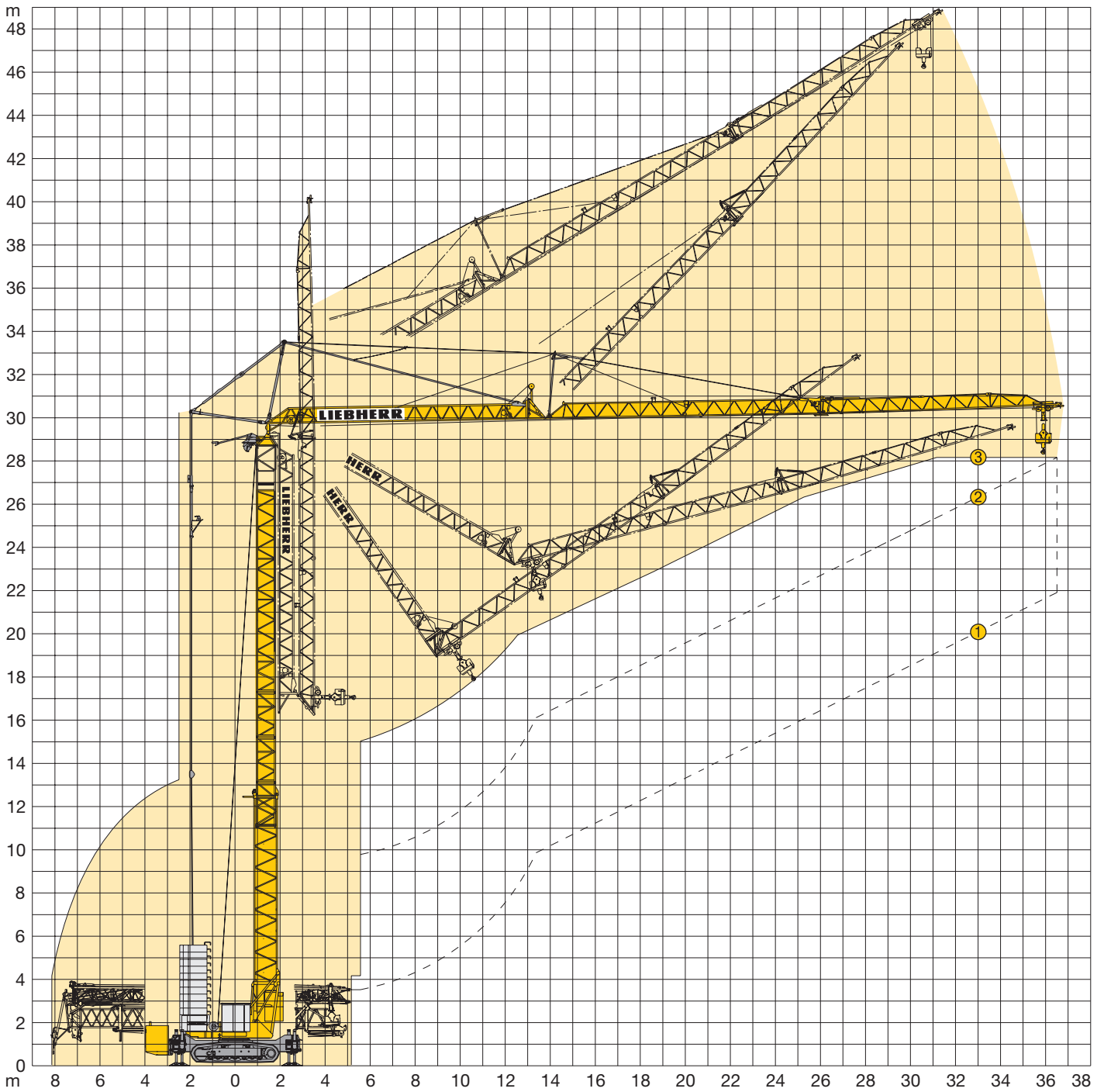
Driving units / Mécanismes d'entraînement / Azionamenti / Mecanismos / Mecanismos

	U/min. 0 ↔ 0,9 sl./min tr./min	3,0 kW EDC
	20,0 / 40,0 m/min	1,3 / 2,3 kW
	25,0 m/min	2 x 1,3 kW
	0 - 45°, ca. 60 sec.	1,5 kW

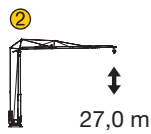
BGL	C.0.08.0045	+ C.0.08.0045
------------	-------------	----------------

	400 V	Hz	kVA
50,0 m	4 x 6 mm ² KL	50	25,0 KL
77,0 m	4 x 6 mm ² FU		20,0 FU

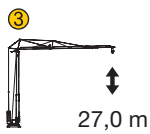
	Stufe / Step / Cran Marcia / Velocidad Velocidade	kg		m/min
11,0 kW KL	1	2500		5,0
	2	2500		20,0
	3	1300		40,0
	1	2000	4000	5,0 2,5
	2	2000	4000	20,0 10,0
	3	1300	2600	40,0 20,0
11,0 kW FU	1	2500		4,0
	2	2500		20,0
	3	1300		38,0
	4	1000		50,0
	1	2000	4000	4,0 2,0
	2	2000	4000	20,0 10,0
	3	1300	2600	38,0 19,0
	4	1000	2000	50,0 25,0



1 ohne Turmstück
 without tower section
 sans éléments de mât
 senza elementi di torre
 sin tramo de torre
 sem tramo de torre



2 3 Turmstücke
 3 tower sections
 3 éléments de mât
 3 elementi di torre
 3 tramos de torre
 3 tramos de torre



3 3 Turmstücke
 3 tower sections
 3 éléments de mât
 3 elementi di torre
 3 tramos de torre
 3 tramos de torre

Ausleger-Luftmontage
 Aerial mounting of the jib
 Montage de la flèche en l'air
 Montaggio aereo del braccio
 Montaje aereo de la pluma
 Montagem aerea da lança

			13,0 m	21,0 m	27,0 m
	30 %	25 %	15 %	10 %	7 %
	15 %	15 %	8 %	7 %	3 %
	ca. 14 N/cm ²	ca. 25 N/cm ²	ca. 25 N/cm ²	ca. 25 N/cm ²	ca. 25 N/cm ²
V_{max}	25 m/min	10 m/min	10 m/min	10 m/min	10 m/min

Kolli-Liste

Packing List / Liste de colisage / Lista dei colli / Lista de contenido / Lista de embalagem

Pos. Item Rep. Voce Pos. Ref.	Anz. Qty. Qte. Qta. Cant. Cant.				L (m)	B (m)	H (m)	kg	
1	3	Turmstück / Tower section Elément de mât / Elemento di torre Tramo de torre / Peça de torre			2,10	0,85	0,88	350	
2	1	Ausleger-Verlängerung 25,5 m – 30,0 m Jib extension / Rallonge de la flèche Elemento estensione braccio Prolongación de pluma / Extensão da lança			4,70	0,80	0,70	235	
3	1	Ausleger-Verlängerung 30,0 m – 33,0 m Jib extension / Rallonge de la flèche Elemento estensione braccio Prolongación de pluma / Extensão da lança			3,10	0,80	0,70	90	
4	1	Ausleger-Verlängerung 33,0 m – 36,0 m Jib extension / Rallonge de la flèche Elemento estensione braccio Prolongación de pluma / Extensão da lança			3,10	0,80	0,70	70	
5	1	Raupenunterwagen / Crawler undercarriage Châssis à chenilles / Carro cingolato Carro sobre raíles / Carro de lagarta			5,835	2,55 [Ⓐ] 2,65 [Ⓑ]	1,46	12000	
6	1	Stromgenerator mit Konsole / Current generator with bracket Générateur de courant avec semelle Generatore di corrente con supporto / Generator de corriente con consola / Gerador de corrente de consola			72 kVA	2,49	1,03	1,48	1350
7	1	Transportachse vorne Tra 100 KY 6A Road transport axle front / Essieux de transport avant / Asse di trasporto anteriore / Eje delantero para transporte / Eixo de transporte dianteiro			3,65 – 4,15	1,45	1,10	920	
8	1	Transportachse hinten Tra 204 GZ 1 Road transport axle behind / Essieux de transport arrière / Asse di trasporto posteriore / Eje trasero para transporte / Eixo de transporte traseiro			2,50	2,50	1,10	1900	
9	1	Kiste mit Seilen und Kleinteilen / Case with ropes and small parts Caisse avec câbles et pièces détachées / Cassa con funi e accessori Caja con cables y piezas sueltas / Caixa contendo cabos e acessórios			1,00	0,80	1,00	450	

Konstruktionsänderungen vorbehalten!
Subject to alterations! / Sous réserves de modifications!
Si fa riserva di modifiche! / Salvo modificação da construação!
¡Sujeto a modificaciones!

Sämtliche Angaben erfolgen ohne Gewähr. / This information is supplied without liability.
Ces renseignements sont sans garantie. / Le indicazioni contenute si intendono salvo errori ed omissioni.
Declinamos toda responsabilidad derivada de la información proporcionada. / Declinamos qualquer
responsabilidade quanto à informação fornecida.

120 P – 4819 H1 B3 DIN 15018 • BGL C.0.08.0045 / FEM (Section1) Krangruppe A3 und OENORM T3 • 04.07 / 6 Printed in Germany.