



# 75 TON MOBILIFT

by  
LIFT SYSTEMS, INC.



***Global Leaders in Specialized  
Lifting Equipment!***



# MOBILIFT

## 75 TON

### STANDARD EQUIPMENT

**ENGINE:**

Cummins Diesel Engine: QSB3.3P  
108 hp (81 Kw) intermittent @ 2200 rpm  
U.S. EPA Tier 3  
CARB Tier 3  
EU Stage III  
Torque @ 1600 rpm, 306 ft-lbs (415 N-m)

**PUMP:**

Sundstrand 90 series drive pump

**CONTROL SYSTEM:**

CARL (Computer Assisted Remote Lifting) Control System.  
Monitors Boom Angle, Boom Extension, Pressure,  
Counterweight Load Pin. Automatic Shutdown for overload  
conditions. Large easy to read display screen with push  
button navigation and dial adjustment.

**CONTROLS:**

Separate controls for each function.  
Combination of foot pedal, joystick, and push  
button controls allows for multiple functions to be  
performed at the same time.

**DRIVE:**

Poclain MK35 drive motors (qty. 3)  
(2) in front, (1) in rear steering box.

**WHEELS:**

**Front:** qty. (4)  
Diameter: 28"  
Width: (2) @ 16" and (2) @ 10"  
**Rear:** qty. (2)  
Diameter: 28"  
Width: 16"

Replaceable polyurethane composition

**STEERING:**

90 degree steering of rear wheels.

**OSCILLATING REAR STEERING BOX:**

Keeps all steering wheels in contact with ground.

**GRADABILITY:**

Unloaded maximum grade is 20%  
Loaded maximum grade is 10%

**GROUND BEARING PRESSURE:**

Loaded Front Tires: 360 psi maximum  
Unloaded Rear Tires: 440 psi maximum

**TRAVEL SPEED UNLOADED:**

Travel Mode - High Gear = 0.0 to 1.70 mph  
Travel Mode - Low Gear = 0.0 to 0.86 mph  
Work Mode - Low Gear = 0.0 to 0.42 mph

**TELESCOPING COUNTERWEIGHT:**

Standard counterweight section telescopes 5'  
using (2) hydraulic cylinders. Push button control.

**HYDRAULIC RESERVOIR:**

200 gallons (757 liters)

**BOOM:**

High strength three section telescoping boom with powered  
first section and manually extended second section.  
Replaceable wear pads on all sliding sections.

**BOOM LIFT CYLINDERS:**

Twin cylinders capable of lifting and lowering with a full  
load. Safety holding valves installed on both cylinders.  
Spherical bearings ensure constant alignment with the  
boom.

**BOOM TELESCOPE CYLINDER:**

Single cylinder capable of telescoping the boom in and out  
with a full load. Safety holding valve is installed on the  
cylinder.

**LIFTING EYES:**

Qty. one (1) centrally located on main boom and one (1)  
located on power boom both with 75 ton capacity.

**WINCH:**

Two speed high performance hydraulic winch. Integral, full  
capacity load brake. Wide, low profile drum. 580' - 5/8"  
wire rope capacity.

**WEIGHT:**

48,000 lbs.  
Standard "A" counterweight included

**COUNTERWEIGHTS:**

"A" - non-removable counterweight installed in unit  
"B" - qty. (2) - 7,300 lbs each. - 14,600 lbs total  
"C" - qty. (1) - 8,450 lbs  
"D" - qty. (1) - 8,050 lbs

**TIE DOWN / LIFTING EYES:**

Tie down / lifting eyes installed for securing unit during  
transport and for lifting of the unit.

**DRIVER PROTECTION GUARD:**

Structural overhead guard for operator protection.

**OTHER STANDARD FEATURES:**

Back up alarm, horn, strobe light, operator seat  
complete with safety belt and electric switch.

### OPTIONAL EQUIPMENT

**RADIO REMOTE CONTROL:**

Radio remote control allows full machine functionality from  
a wireless radio remote. Allows operator optimal view of  
load. Emergency safety shutdown switch is standard.

**65 TON SPINNER:**

Allows for 360 degree rotation of load from picking eye.

**EXHAUST PURIFIER:**

Reduces diesel particulate matter.

**JIB EXTENSION:**

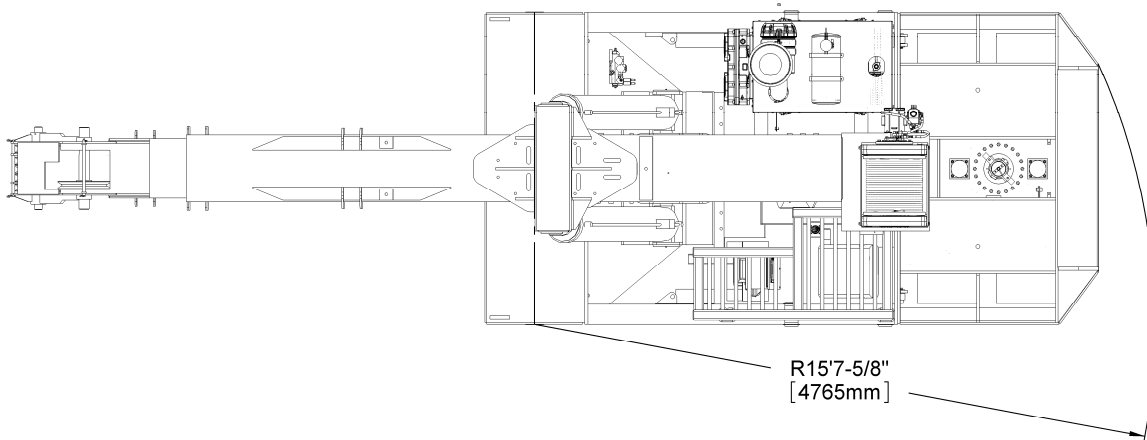
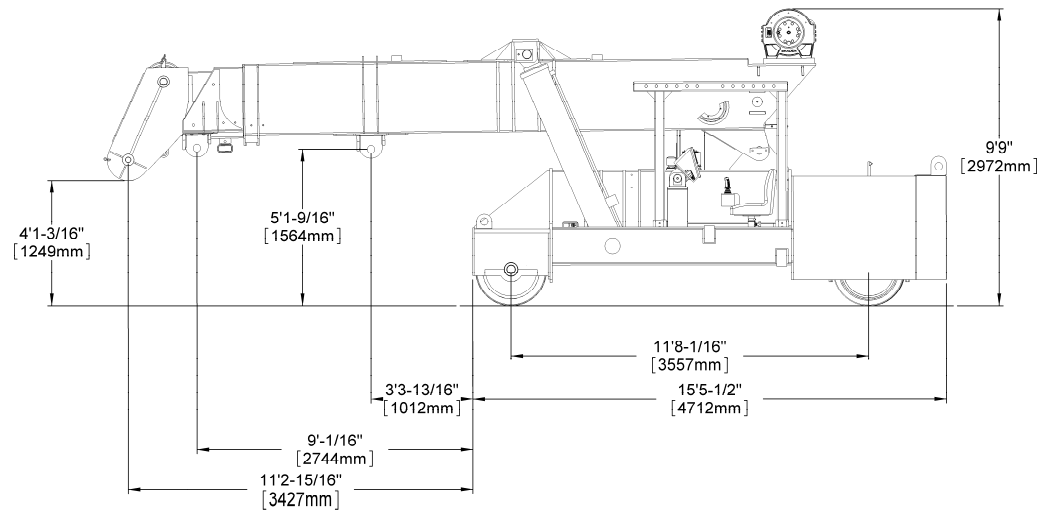
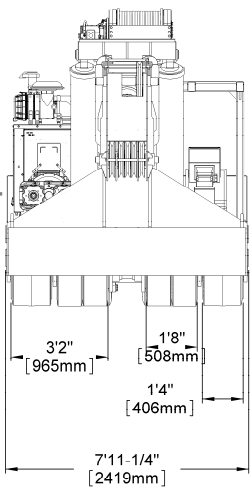
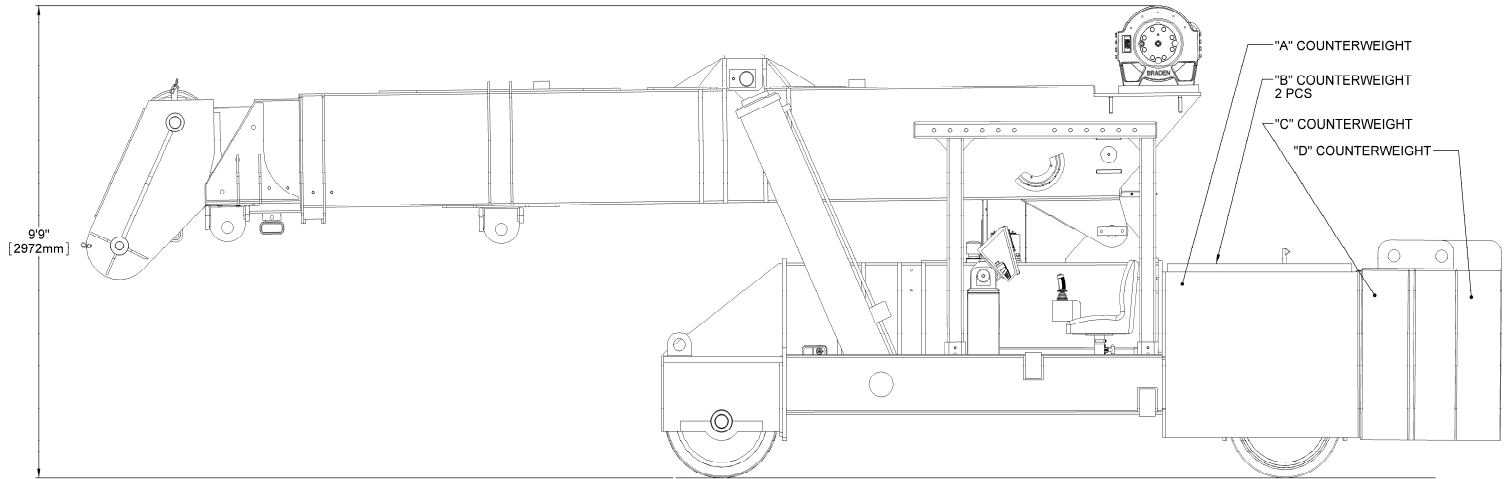
Consult factory for available capacities



# MOBILIFT

## 75 TON

### DIMENSIONAL DATA

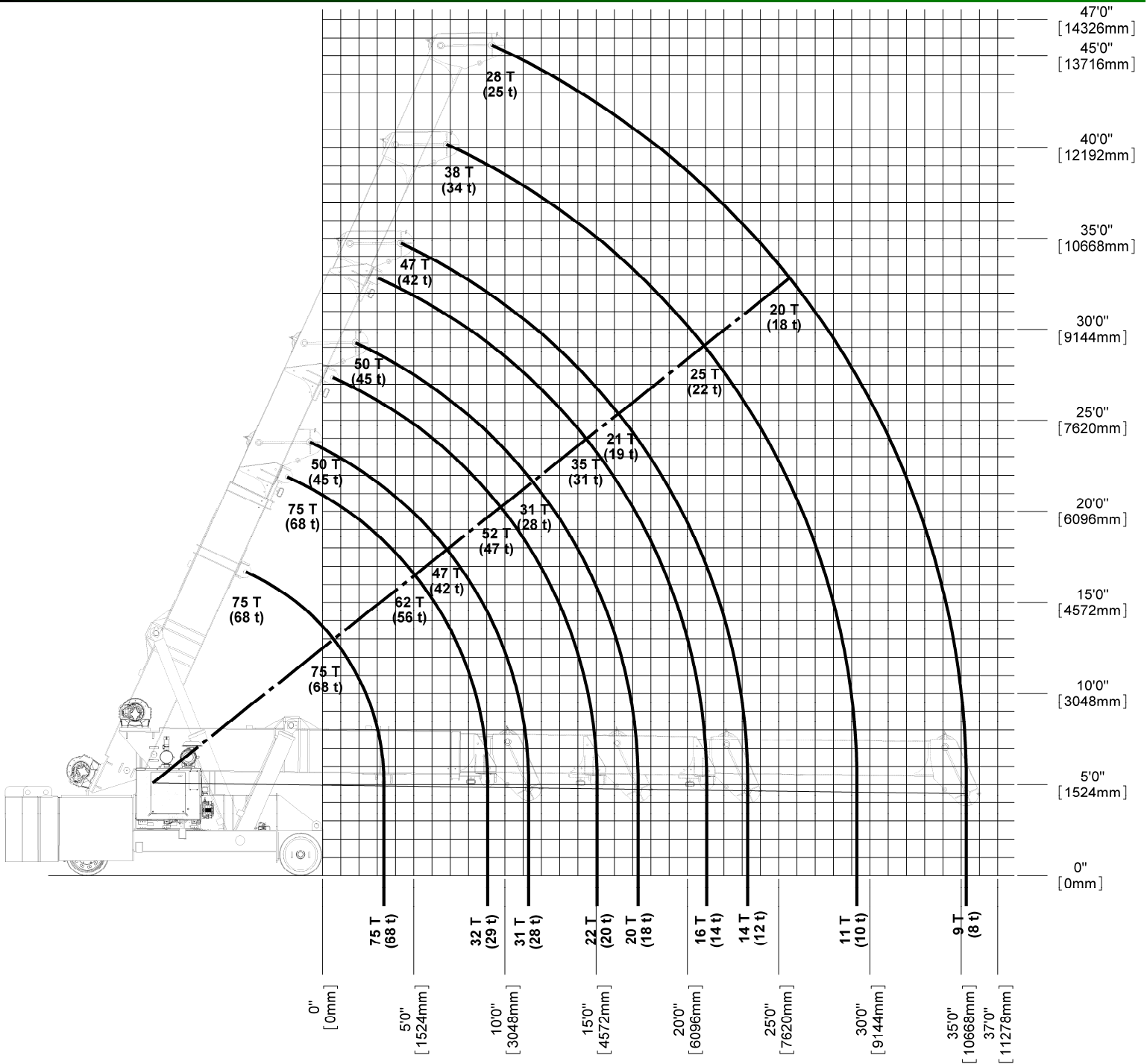




# MOBILIFT

## 75 TON

### REFERENCE CAPACITY / RANGE DIAGRAM



#### NOTE

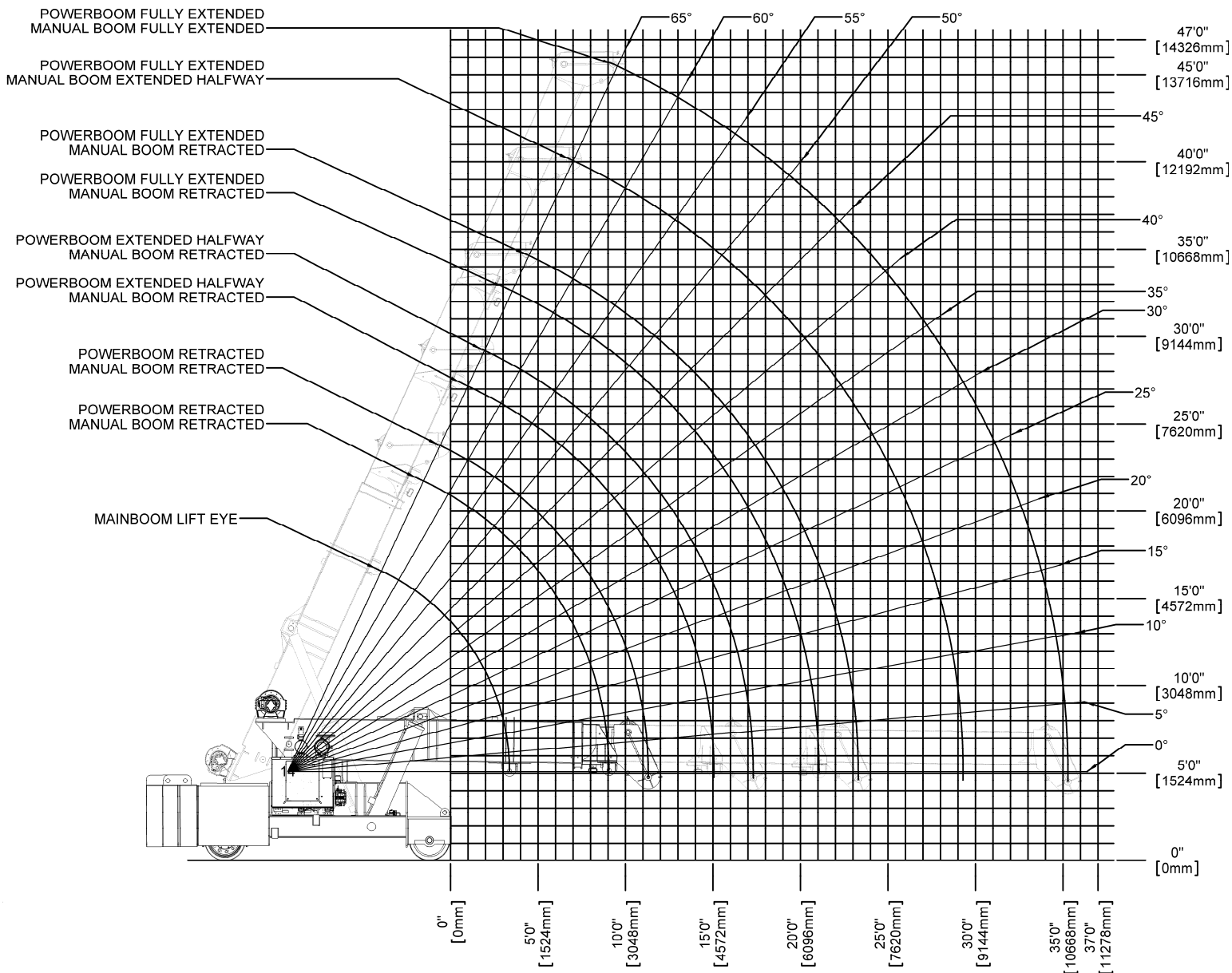
1. The above chart is for reference purposes only.
2. Never use the above chart for lift planning calculations
3. Lift plan calculations are to be determined solely by the load charts and range diagrams that are issued for the specific serial numbered machine that is to be used for the specific planned lift.



# MOBILIFT

## 75 TON

### RANGE DIAGRAM



#### NOTE

1. The above chart is for reference purposes only.
2. Never use the above chart for lift planning calculations
3. Lift plan calculations are to be determined solely by the load charts and range diagrams that are issued for the specific serial numbered machine that is to be used for the specific planned lift.



# MOBILIFT

## 75 TON

### LOAD CHARTS FOR "A" COUNTERWEIGHT (HOOK BLOCK)

LOAD RADIUS (FEET FROM FRONT)	75 TON MOBILIFT LOAD CHART FOR USE WITH HOOK BLOCK ONLY STANDARD NON-REMOVABLE "A" COUNTERWEIGHT												MLLC105 1/17/2001
	FULLY EXTENDED BOOM LENGTH (FEET)						FULLY RETRACTED BOOM LENGTH (FEET)						
	20	32	44	20	32	44							
0	63	100,000	LOADED BOOM ANGLE		MANUAL FLY SECTION		63	100,000	LOADED BOOM ANGLE		MANUAL FLY SECTION		
1	60	100,000			SEE NOTES		60	100,000			SEE NOTES		
2	57	99,400					57	78,900					
3	54	75,300					54	59,400					
4	50	60,200					50	47,400					
5	46	50,000	64	49,200	LOADED BOOM ANGLE		46	39,200	64	38,400	LOADED BOOM ANGLE		
6	42	42,500	62	41,800			42	33,200	62	32,500			
7	38	36,900	60	36,200			38	28,700	60	28,000			
8	33	32,400	58	31,800			33	25,100	58	24,500			
9	28	28,900	56	28,200			28	22,300	56	21,600			
10	21	25,900	54	25,300	64	26,500	21	19,900	54	19,300	64	20,400	
11	10	23,500	52	22,900	63	24,000	10	17,900	52	17,400	63	18,500	
12	SEE NOTE (E)		49	20,800	62	21,900	SEE NOTE (E)		49	15,700	62	16,800	
13			47	19,000	60	20,100			47	14,300	60	15,300	
14			45	17,500	59	18,500			45	13,000	59	14,100	
15			42	16,100	57	17,100			42	12,000	57	12,900	
16			39	14,900	56	15,900			39	11,000	56	12,000	
17			36	13,900	54	14,800			36	10,100	54	11,100	
18			33	12,900	52	13,800			33	9,400	52	10,300	
19			30	12,000	51	13,000			30	8,700	51	9,600	
20			26	11,200	49	12,200			26	8,000	49	9,000	
21			22	10,500	47	11,400			22	7,500	47	8,400	
22			16	9,900	46	10,800			16	7,000	46	7,900	
23			8	9,300	44	10,200			8	6,500	44	7,400	
24					42	9,600					42	6,900	
25					40	9,100					40	6,500	
26					38	8,600					38	6,100	
27					36	8,200					36	5,800	
28					33	7,700					33	5,400	
29					31	7,400					31	5,100	
30					28	7,000					28	4,800	
31					26	6,700					26	4,500	
32					22	6,300					22	4,300	
33					19	6,000					19	4,000	
34					14	5,700					14	3,800	
35					7	5,500					7	3,600	

### LOAD CHARTS FOR "A" AND "B" COUNTERWEIGHT (HOOK BLOCK)

LOAD RADIUS (FEET FROM FRONT)	75 TON MOBILIFT LOAD CHART FOR USE WITH HOOK BLOCK ONLY STANDARD NON-REMOVABLE "A" COUNTERWEIGHT WITH "B" COUNTERWEIGHT ADDED												MLLC106 1/17/2001
	FULLY EXTENDED BOOM LENGTH (FEET)						FULLY RETRACTED BOOM LENGTH (FEET)						
	20	32	44	20	32	44							
0	63	100,000	LOADED BOOM ANGLE		MANUAL FLY SECTION		63	100,000	LOADED BOOM ANGLE		MANUAL FLY SECTION		
1	60	100,000			SEE NOTES		60	100,000			SEE NOTES		
2	57	100,000					57	100,000					
3	54	100,000					54	92,400					
4	50	98,400					50	74,100					
5	46	82,100	64	81,300	LOADED BOOM ANGLE		46	61,700	64	60,900	LOADED BOOM ANGLE		
6	42	70,200	62	69,500			42	52,600	62	51,900			
7	38	61,200	60	60,600			38	45,800	60	45,100			
8	33	54,200	58	53,500			33	40,400	58	39,700			
9	28	48,500	56	47,900			28	36,000	56	35,400			
10	21	43,800	54	43,200	64	44,400	21	32,400	54	31,900	64	33,000	
11	10	39,900	52	39,300	63	40,400	10	29,400	52	28,900	63	30,000	
12	SEE NOTE (E)		49	36,000	62	37,100	SEE NOTE (E)		49	26,400	62	27,400	
13			47	33,200	60	34,200			47	24,200	60	25,200	
14			45	30,700	59	31,700			45	22,300	59	23,300	
15			42	28,500	57	29,500			42	20,600	57	21,600	
16			39	26,600	56	27,600			39	19,200	56	20,200	
17			36	24,900	54	25,900			36	17,900	54	18,800	
18			33	23,400	52	24,300			33	16,700	52	17,600	
19			30	22,000	51	22,900			30	15,700	51	16,600	
20			26	20,700	49	21,700			26	14,700	49	15,600	
21			22	19,600	47	20,500			22	13,800	47	14,700	
22			16	18,600	46	19,400			16	13,000	46	13,900	
23			8	17,600	44	18,500			8	12,300	44	13,200	
24					42	17,600					42	12,500	
25					40	16,800					40	11,900	
26					38	16,000					38	11,300	
27					36	15,300					36	10,800	
28					33	14,600					33	10,300	
29					31	14,000					31	9,800	
30					28	13,500					28	9,300	
31					26	12,900					26	8,900	
32					22	12,400					22	8,500	
33					19	11,900					19	8,200	
34					14	11,500					14	7,800	
35					7	11,000					7	7,500	

**NOTE:**

Specifications are provided in imperial dimensions. All equipment dimensions, designs, specifications, calculations, etc., as described, are subject to change at manufacturer's discretion at any time and without notice. Weights are approximate and may vary. Data herein is for informational purposes only and will not be construed to guarantee suitability of equipment for any particular as performance may vary with conditions encountered. Warranty will apply as written in standard contract form upon purchase of equipment. Capacities are for reference only and must not be used for any serial numbered machine. Serial numbered load charts may be obtained from Lift Systems, Inc.



# MOBILIFT

## 75 TON

### LOAD CHARTS FOR "A", "B", AND "C" COUNTERWEIGHT (HOOK BLOCK)

LOAD RADIUS (FEET FROM FRONT)	75 TON MOBILIFT LOAD CHART FOR USE WITH HOOK BLOCK ONLY STANDARD NON-REMOVABLE "A" COUNTERWEIGHT WITH "B", "C" COUNTERWEIGHT ADDED													MLLC107 1/17/2001
	FULLY EXTENDED BOOM LENGTH (FEET)						FULLY RETRACTED BOOM LENGTH (FEET)							
	△°	20	32	44	△°	20	32	44						
0	63	100,000			63	100,000								
1	60	100,000	LOADED BOOM ANGLE	MANUAL FLY SECTION SEE NOTES	60	100,000	LOADED BOOM ANGLE	MANUAL FLY SECTION SEE NOTES						
2	57	100,000			57	100,000								
3	54	100,000	△°	LOADED BOOM ANGLE	54	100,000	△°	LOADED BOOM ANGLE						
4	50	100,000			50	94,200								
5	46	100,000	64	94,000	46	78,600	64	77,800						
6	42	89,700	62	89,000	42	67,200	62	66,500						
7	38	78,400	60	77,700	38	58,800	60	57,900						
8	33	69,500	58	68,800	33	51,800	58	51,100						
9	28	62,300	56	61,700	28	46,300	56	45,700						
10	21	56,400	54	55,800	21	41,900	54	41,300	64	42,400				
11	10	51,500	52	50,900	10	38,100	52	37,500	63	38,600				
12	SEE NOTE (E)		49	46,700	62	47,800	49	34,400	62	35,400				
13			47	43,100	60	44,200	47	31,600	60	32,700				
14			45	40,000	59	41,000	45	29,200	59	30,300				
15			42	37,300	57	38,200	42	27,200	57	28,200				
16			39	34,800	56	35,800	39	25,300	56	26,300				
17			36	32,700	54	33,600	36	23,700	54	24,600				
18			33	30,700	52	31,700	33	22,200	52	23,200				
19			30	29,000	51	29,900	30	20,900	51	21,800				
20			26	27,400	49	28,300	26	19,700	49	20,600				
21			22	26,000	47	26,900	22	18,600	47	19,500				
22			16	24,700	46	25,600	16	17,600	46	18,500				
23			8	23,400	44	24,300	8	16,700	44	17,600				
24					42	23,200			42	16,700				
25					40	22,200			40	15,900				
26					38	21,200			38	15,200				
27					36	20,300			36	14,500				
28					33	19,500			33	13,900				
29					31	18,700			31	13,300				
30					28	18,000			28	12,700				
31					26	17,300			26	12,200				
32					22	16,700			22	11,700				
33					19	16,100			19	11,300				
34					14	15,500			14	10,800				
35					7	15,000			7	10,400				

**NOTES:**  
 A) FLY SECTION CAPACITIES ARE LIMITED BY ANGLE. DO NOT USE LOAD RADIUS WHEN USING FLY SECTION.  
 B) RATINGS ABOVE THE BOLD LINE ARE BASED ON THE MACHINE'S HYDRAULIC OR STRUCTURAL STRENGTH AND NOT STABILITY.  
 C) RATINGS BELOW THE BOLD LINE ARE BASED ON 85% OF TIPPING.  
 D) ALL CAPACITIES ARE IN POUNDS.  
 E) TELESCOPE CYLINDER MUST BE FULLY RETRACTED AND AGAINST STOPS.

**WARNING:**  
 FOR BOOM LENGTHS LESS THAN 44' WITH FLY SECTION EXTENDED, THE RATED LOADS ARE DETERMINED BY BOOM ANGLE ONLY, IN THE COLUMN HEADED BY 44' BOOM. FOR BOOM ANGLES NOT SHOWN USE RATINGS OF THE NEXT LOWER BOOM ANGLE.

**CAUTION:**  
 DO NOT EXTEND OR RETRACT COUNTERWEIGHT WITH ANY LOAD SUSPENDED ON HOOK OR FORKS.

### LOAD CHARTS FOR "A", "B", "C", AND "D" COUNTERWEIGHT (HOOK BLOCK)

LOAD RADIUS (FEET FROM FRONT)	75 TON MOBILIFT LOAD CHART FOR USE WITH HOOK BLOCK ONLY STANDARD NON-REMOVABLE "A" COUNTERWEIGHT WITH "B", "C", "D" COUNTERWEIGHT ADDED													MLLC108 1/17/2001
	FULLY EXTENDED BOOM LENGTH (FEET)						FULLY RETRACTED BOOM LENGTH (FEET)							
	△°	20	32	44	△°	20	32	44						
0	63	100,000			63	100,000								
1	60	100,000	LOADED BOOM ANGLE	MANUAL FLY SECTION SEE NOTES	60	100,000	LOADED BOOM ANGLE	MANUAL FLY SECTION SEE NOTES						
2	57	100,000			57	100,000								
3	54	100,000	△°	LOADED BOOM ANGLE	54	100,000	△°	LOADED BOOM ANGLE						
4	50	100,000			50	100,000								
5	46	100,000	64	94,000	46	95,500	64	94,000						
6	42	100,000	62	89,000	42	81,800	62	81,000						
7	38	95,300	60	84,000	38	71,400	60	70,700						
8	33	84,600	58	80,000	33	63,200	58	62,800						
9	28	76,000	56	75,400	28	56,700	56	56,100						
10	21	68,900	54	68,300	21	51,300	54	50,700	64	51,800				
11	10	62,900	52	62,300	10	46,700	52	46,200	63	47,300				
12	SEE NOTE (E)		49	57,300	62	52,000	49	42,400	62	43,400				
13			47	53,000	60	51,000	47	39,100	60	40,100				
14			45	49,200	59	50,200	45	36,200	59	37,200				
15			42	45,900	57	46,900	42	33,700	57	34,700				
16			39	43,000	56	43,900	39	31,500	56	32,400				
17			36	40,400	54	41,300	36	29,500	54	30,500				
18			33	38,000	52	39,000	33	27,700	52	28,700				
19			30	35,900	51	36,800	30	26,100	51	27,100				
20			26	34,000	49	34,900	26	24,700	49	25,600				
21			22	32,300	47	33,200	22	23,400	47	24,300				
22			16	30,700	46	31,600	16	22,200	46	23,100				
23			8	29,200	44	30,100	8	21,100	44	21,900				
24					42	28,800			42	20,900				
25					40	27,500			40	20,000				
26					38	26,400			38	19,100				
27					36	25,300			36	18,300				
28					33	24,300			33	17,500				
29					31	23,400			31	16,800				
30					28	22,500			28	16,100				
31					26	21,700			26	15,500				
32					22	20,900			22	14,900				
33					19	20,200			19	14,400				
34					14	19,500			14	13,900				
35					7	18,800			7	13,400				

**NOTES:**  
 A) FLY SECTION CAPACITIES ARE LIMITED BY ANGLE. DO NOT USE LOAD RADIUS WHEN USING FLY SECTION.  
 B) RATINGS ABOVE THE BOLD LINE ARE BASED ON THE MACHINE'S HYDRAULIC OR STRUCTURAL STRENGTH AND NOT STABILITY.  
 C) RATINGS BELOW THE BOLD LINE ARE BASED ON 85% OF TIPPING.  
 D) ALL CAPACITIES ARE IN POUNDS.  
 E) TELESCOPE CYLINDER MUST BE FULLY RETRACTED AND AGAINST STOPS.

**WARNING:**  
 FOR BOOM LENGTHS LESS THAN 44' WITH FLY SECTION EXTENDED, THE RATED LOADS ARE DETERMINED BY BOOM ANGLE ONLY, IN THE COLUMN HEADED BY 44' BOOM. FOR BOOM ANGLES NOT SHOWN USE RATINGS OF THE NEXT LOWER BOOM ANGLE.

**CAUTION:**  
 DO NOT EXTEND OR RETRACT COUNTERWEIGHT WITH ANY LOAD SUSPENDED ON HOOK OR FORKS.

**NOTE:**

Specifications are provided in imperial dimensions. All equipment dimensions, designs, specifications, calculations, etc., as described, are subject to change at manufacturer's discretion at any time and without notice. Weights are approximate and may vary. Data herein is for informational purposes only and will not be construed to guarantee suitability of equipment for any particular as performance may vary with conditions encountered. Warranty will apply as written in standard contract form upon purchase of equipment. Capacities are for reference only and must not be used for any serial numbered machine. Serial numbered load charts may be obtained from Lift Systems, Inc.



# MOBILIFT

## 75 TON

### POWER BOOM LIFTING EYE LOAD CHARTS

LOAD RADIUS FEET FROM FRONT	COUNTERWEIGHT RETRACTED				MLLC101 1/19/2001
	"A"	"AB"	"ABC"	"ABCD"	"ABCD"
0	150,000	150,000	150,000	150,000	
1	112,000	150,000	150,000	150,000	
2	76,500	119,600	144,000	144,000	
3	57,600	90,600	115,400	138,000	
4	45,800	72,600	92,700	112,800	
5	37,800	60,300	77,200	94,100	
6	32,000	51,400	66,000	80,500	
7	27,500	44,600	57,400	70,300	
8	24,100	39,300	50,800	62,200	
9	21,300	35,100	45,400	55,700	

LOAD RADIUS FEET FROM FRONT	COUNTERWEIGHT EXTENDED				MLLC102 1/19/2001
	"A"	"AB"	"ABC"	"ABCD"	"ABCD"
0	150,000	150,000	150,000	150,000	
1	141,700	150,000	150,000	150,000	
2	97,200	144,000	144,000	144,000	
3	73,400	120,500	138,000	138,000	
4	58,700	96,900	123,700	134,000	
5	48,600	80,700	103,300	125,600	
6	41,300	69,000	88,500	107,800	
7	35,700	60,100	77,300	94,200	
8	31,400	53,100	68,400	83,600	
9	27,900	47,500	61,400	75,000	

### MAIN BOOM LIFTING EYE LOAD CHARTS

LOAD RADIUS FEET FROM FRONT	COUNTERWEIGHT RETRACTED				MLLC103 1/17/2001
	"A"	"AB"	"ABC"	"ABCD"	"ABCD"
POWER SECTION BOOM FULLY RETRACTED					
0	150,000	150,000	150,000	150,000	
1	102,400	150,000	150,000	150,000	
2	69,200	112,200	144,500	150,000	
3	51,500	84,500	109,300	134,100	
3.25	47,900	78,900	102,100	125,300	

LOAD RADIUS FEET FROM FRONT	COUNTERWEIGHT EXTENDED				MLLC104 1/17/2001
	"A"	"AB"	"ABC"	"ABCD"	"ABCD"
POWER SECTION BOOM FULLY RETRACTED					
0	150,000	150,000	150,000	150,000	
1	132,100	150,000	150,000	150,000	
2	89,900	150,000	150,000	150,000	
3	67,400	114,500	147,600	150,000	
3.25	62,800	106,900	138,000	150,000	

**NOTE:**

The power section boom must be fully retracted.

The ratings above the bold line are based upon machine's hydraulic or structural strength and not stability.

Ratings below bold line are based on 85% of tipping.

All capacities are in pounds.

**CAUTION!**

Do not extend or retract counterweight with any load suspended on hook.

**LIFT SYSTEMS, INC.**

OFFICE:  
1505 - 7th Street  
East Moline, IL 61244

MAILING ADDRESS:  
P.O. Box 906  
Moline, IL 61266

TEL: +1-309-764-9842  
FAX: +1-309-764-9848  
EMAIL: [liftit@lift-systems.com](mailto:liftit@lift-systems.com)  
WEB: [www.lift-systems.com](http://www.lift-systems.com)