



110 TON MOBILIFT

by
LIFT SYSTEMS, INC.



***Global Leaders in Specialized
Lifting Equipment!***



MOBILIFT

110 TON

STANDARD EQUIPMENT

ENGINE:

Cummins Diesel Engine: QSB4.5P
160 hp (116 Kw) intermittent @ 2500 rpm
U.S. EPA Tier 3
CARB Tier 3
EU Stage III
Torque @ 1500 rpm, 466 ft-lbs (632 N-m)

PUMP:

Sundstrand 90 series drive pump

CONTROL SYSTEM:

CARL (Computer Assisted Remote Lifting) Control System.
Monitors Boom Angle, Boom Extension, Pressure, Counterweight Load Pin. Automatic Shutdown for overload conditions. Large easy to read display screen with push button navigation and dial adjustment.

CONTROLS:

Separate controls for each function.
Combination of foot pedal, joystick, and push button controls allows for multiple functions to be performed at the same time.

DRIVE:

Poclain MK35 drive motors (qty. 3)
(2) in front, (1) in rear steering box.

WHEELS:

Front: qty. (4)
Diameter: 28"
Width: (2) @ 24" and (2) @ 16"
Rear: qty. (2)
Diameter: 28"
Width: 16"

Replaceable polyurethane composition

STEERING:

90 degree steering of rear wheels.

OSCILLATING REAR STEERING BOX:

Keeps all steering wheels in contact with ground.

GRADABILITY:

Unloaded maximum grade is 20%
Loaded maximum grade is 8%

GROUND BEARING PRESSURE:

Loaded Front Tires: 634 psi maximum
Unloaded Rear Tires: 502 psi maximum

TRAVEL SPEED UNLOADED:

Travel Mode - High Gear = 0.0 to 1.70 mph
Travel Mode - Low Gear = 0.0 to 0.86 mph
Work Mode - Low Gear = 0.0 to 0.42 mph

TELESCOPING COUNTERWEIGHT:

Standard counterweight section telescopes 5' using (2) hydraulic cylinders. Push button control.

HYDRAULIC RESERVOIR:

200 gallons (757 liters)

BOOM:

High strength three section telescoping boom with powered first section and manually extended second section.
Replaceable wear pads on all sliding sections.

BOOM LIFT CYLINDERS:

Twin cylinders capable of lifting and lowering with a full load. Safety holding valves installed on both cylinders. Spherical bearings ensure constant alignment with the boom.

BOOM TELESCOPE CYLINDER:

Single cylinder capable of telescoping the boom in and out with a full load. Safety holding valve is installed on the cylinder.

LIFTING EYES:

Qty. one (1) centrally located on main boom and one (1) located on power boom both with 110 ton capacity.

WINCH:

Two speed high performance hydraulic winch. Integral, full capacity load brake. Wide, low profile drum. 500' - 1" wire rope capacity.

WEIGHT:

58,200 lbs.
Standard "A" counterweight included

COUNTERWEIGHTS:

"A" - non-removable counterweight installed in unit
"B" - qty. (2) - 8,270 lbs each. - 16,540 lbs total
"C" - qty. (1) - 9,200 lbs
"D" - qty. (1) - 9,200 lbs
"E" - qty. (1) - 9,200 lbs

TIE DOWN / LIFTING EYES:

Tie down / lifting eyes installed for securing unit during transport and for lifting of the unit.

DRIVER PROTECTION GUARD:

Structural overhead guard for operator protection.

OTHER STANDARD FEATURES:

Back up alarm, horn, strobe light, operator seat complete with safety belt and electric switch.

OPTIONAL EQUIPMENT

RADIO REMOTE CONTROL:

Radio remote control allows full machine functionality from a wireless radio remote. Allows operator optimal view of load. Emergency safety shutdown switch is standard.

110 TON SPINNER:

Allows for 360 degree rotation of load from picking eye.

EXHAUST PURIFIER:

Reduces diesel particulate matter.

JIB EXTENSION:

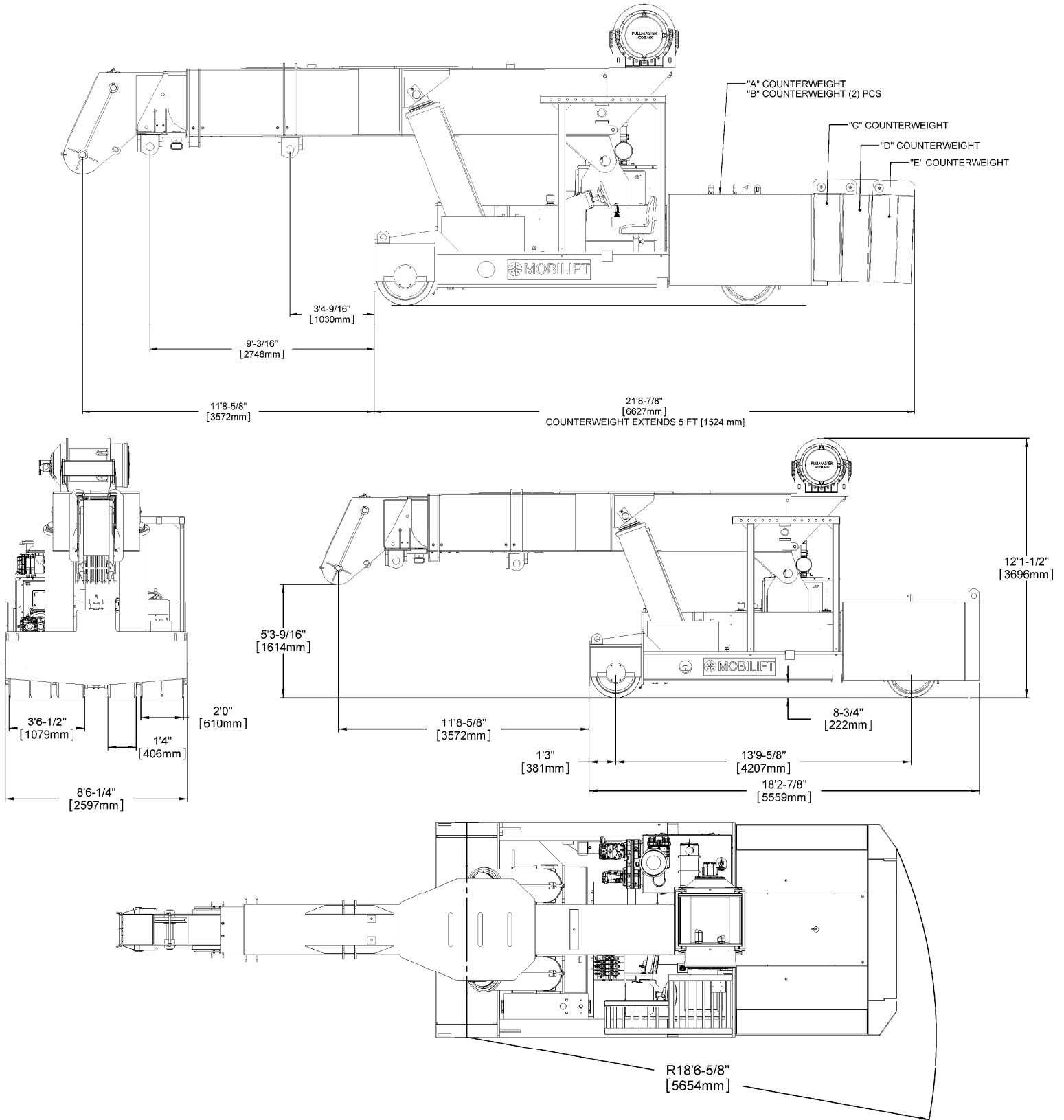
Consult factory for available capacities



MOBILIFT

110 TON

DIMENSIONAL DATA

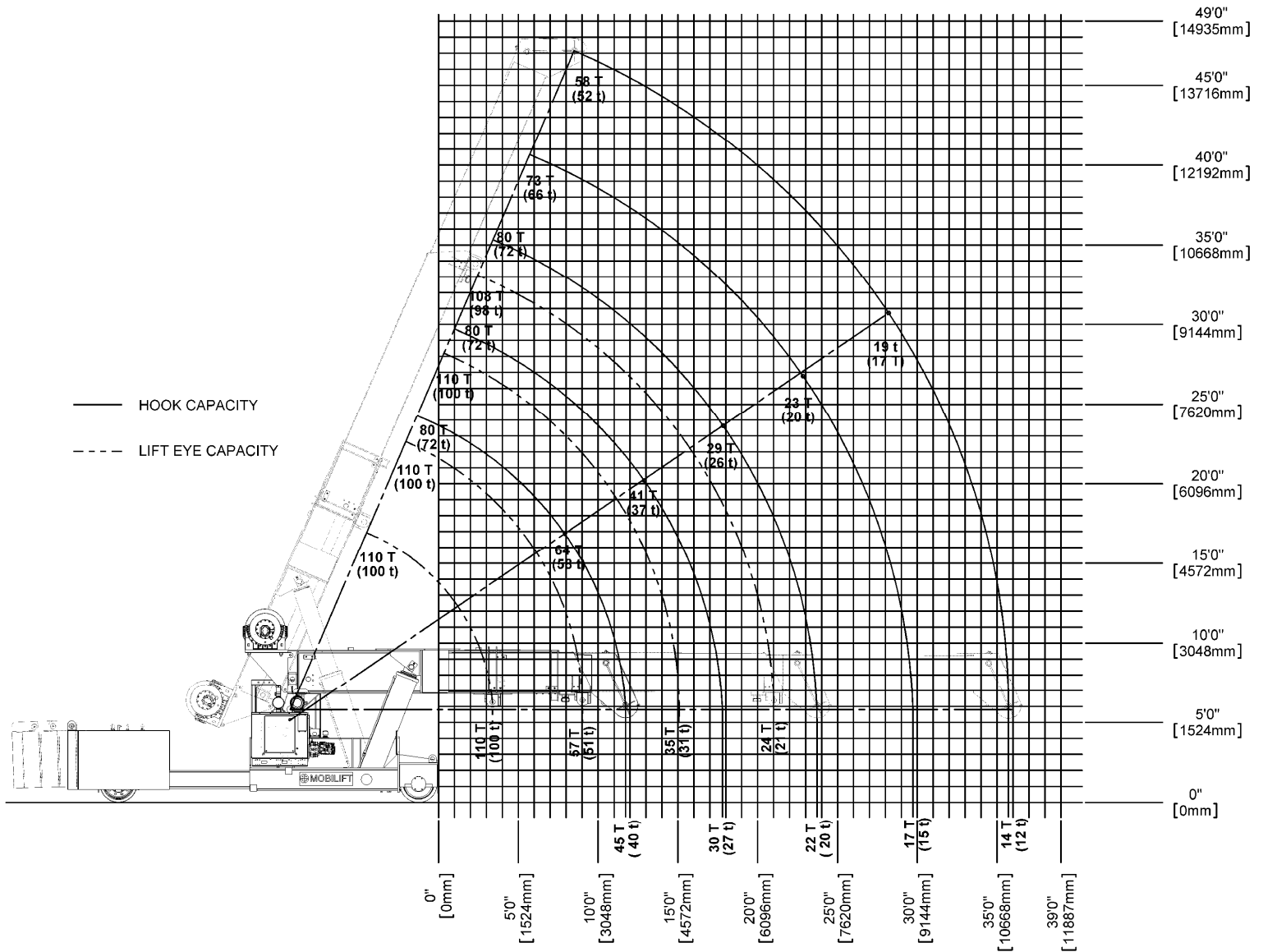




MOBILIFT

110 TON

REFERENCE CAPACITY / RANGE DIAGRAM



NOTE

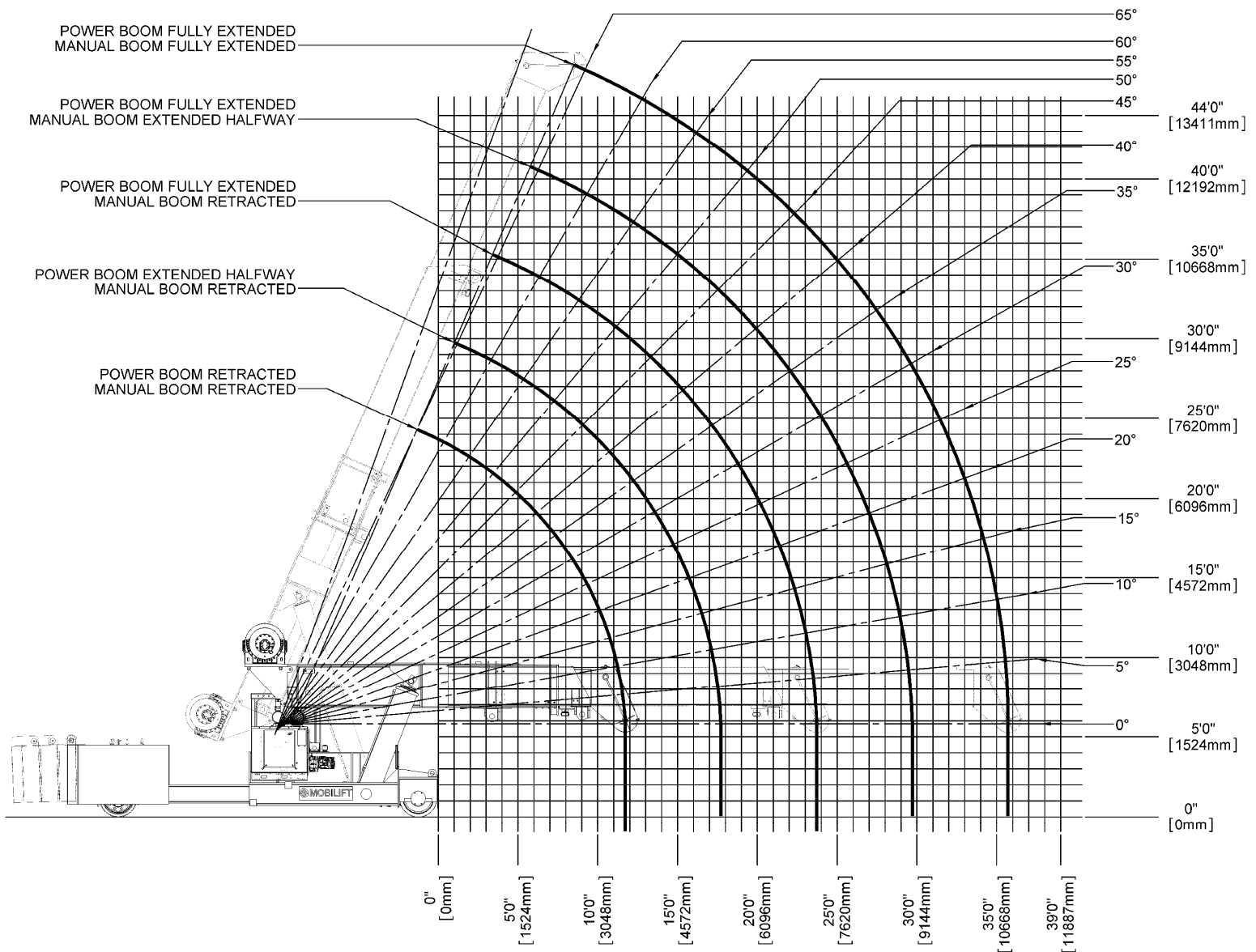
1. The above chart is for reference purposes only.
2. Never use the above chart for lift planning calculations
3. Lift plan calculations are to be determined solely by the load charts and range diagrams that are issued for the specific serial numbered machine that is to be used for the specific planned lift.



MOBILIFT

110 TON

RANGE DIAGRAM



NOTE

1. The above chart is for reference purposes only.
2. Never use the above chart for lift planning calculations
3. Lift plan calculations are to be determined solely by the load charts and range diagrams that are issued for the specific serial numbered machine that is to be used for the specific planned lift.



MOBILIFT

110 TON

LOAD CHARTS FOR "A" COUNTERWEIGHT (HOOK BLOCK)

LOAD RADIUS (FEET FROM FRONT)	110 TON MOBILIFT LOAD CHART FOR USE WITH HOOK BLOCK ONLY STANDARD NON-REMOVABLE "A" COUNTERWEIGHT												MLLC220 15190210
	FULLY EXTENDED BOOM LENGTH (FEET)						FULLY RETRACTED BOOM LENGTH (FEET)						
	△°	21	33	45	△°	21	33	45					
0	63	160,000			63	160,000							
1	60	160,000			60	157,100							
2	57	131,600			57	107,200							
3	54	99,400			54	80,800							
4	50	79,500			50	64,400							
5	46	66,000			46	53,300							
6	42	56,200			42	45,300							
7	38	48,700			38	39,200							
8	33	42,900			33	34,400							
9	28	38,200			28	30,500							
10	23	34,400			21	27,400							
11	0	29,200			10	23,100							
12	SEE NOTE (E)				SEE NOTE (E)								
13													
14													
15													
16													
17													
18													
19													
20													
21													
22													
23													
24													
25													
26													
27													
28													
29													
30													
31													
32													
33													
34													
35													

LOAD CHARTS FOR "A" AND "B" COUNTERWEIGHT (HOOK BLOCK)

LOAD RADIUS (FEET FROM FRONT)	110TON MOBILIFT LOAD CHART FOR USE WITH HOOK BLOCK ONLY STANDARD NON-REMOVABLE "A" COUNTERWEIGHT WITH "B" COUNTERWEIGHT ADDED												MLLC221 15190210
	FULLY EXTENDED BOOM LENGTH (FEET)						FULLY RETRACTED BOOM LENGTH (FEET)						
	△°	21	33	45	△°	21	33	45					
0	63	160,000			63	160,000							
1	60	160,000			60	160,000							
2	57	160,000			57	160,000							
3	54	159,600			54	124,500							
4	50	128,200			50	99,800							
5	46	106,900			46	83,000							
6	42	91,400			42	70,900							
7	38	79,700			38	61,700							
8	33	70,600			33	54,400							
9	28	63,200			28	48,600							
10	21	57,100			21	43,900							
11	0	48,900			0	37,400							
12	SEE NOTE (E)				SEE NOTE (E)								
13													
14													
15													
16													
17													
18													
19													
20													
21													
22													
23													
24													
25													
26													
27													
28													
29													
30													
31													
32													
33													
34													
35													

NOTE:

Specifications are provided in imperial dimensions. All equipment dimensions, designs, specifications, calculations, etc., as described, are subject to change at manufacturer's discretion at any time and without notice. Weights are approximate and may vary. Data herein is for informational purposes only and will not be construed to guarantee suitability of equipment for any particular as performance may vary with conditions encountered. Warranty will apply as written in standard contract form upon purchase of equipment. Capacities are for reference only and must not be used for any serial numbered machine. Serial numbered load charts may be obtained from Lift Systems, Inc.



MOBILIFT

110 TON

LOAD CHARTS FOR "A", "B", AND "C" COUNTERWEIGHT (HOOK BLOCK)

LOAD RADIUS (FEET FROM FRONT)	110 TON MOBILIFT LOAD CHART												MLLC222
	STANDARD NON-REMOVABLE "A" COUNTERWEIGHT WITH "B", "C" COUNTERWEIGHT ADDED												11192010
	FULLY EXTENDED BOOM LENGTH (FEET)						FULLY RETRACTED BOOM LENGTH (FEET)						
△°	21		33		45	△°	21		33		45		
0	63	160,000				63	160,000						
1	60	160,000	LOADED BOOM ANGLE			60	160,000	LOADED BOOM ANGLE					
2	57	160,000				57	160,000						
3	54	160,000				54	160,000						
4	50	160,000		160,000		50	125,400	66	124,800				
5	46	134,600	64	133,900		46	104,600	64	103,900				
6	42	115,300	62	114,700		42	89,400	62	88,900				
7	38	100,700	60	100,200		38	78,000	60	77,400				
8	33	89,300	58	88,800		33	69,000	58	68,500				
9	28	80,100	56	79,600	81,000	28	61,800	56	61,300	66	67,200		
10	21	72,500	54	72,000	64	21	55,800	54	55,400	64	56,700		
11	0	62,300	52	65,700	63	0	47,800	52	50,400	63	51,700		
12	SEE NOTE (E)		49	60,300	62	49	46,200	62	47,500				
13			47	55,700	60	47	42,600	60	43,800				
14			45	51,700	59	45	39,400	59	40,600				
15			42	48,200	57	42	36,700	57	37,900				
16			39	45,100	56	39	34,200	56	35,400				
17			36	42,300	54	36	32,100	54	33,200				
18			33	39,900	52	33	30,100	52	31,200				
19			30	37,600	51	30	28,400	51	29,500				
20			26	35,600	49	26	26,800	49	27,900				
21			22	33,800	47	22	25,300	47	26,400				
22			16	32,100	46	16	24,000	46	25,100				
23			0	29,500	44	0	22,000	44	23,900				
24					42			42	22,700				
25					40			40	21,700				
26					38			38	20,700				
27					36			36	19,800				
28					33			33	19,000				
29					31			31	18,200				
30					28			28	17,500				
31					26			26	16,800				
32					22			22	16,200				
33					19			19	15,600				
34					14			14	15,000				
35					0			0	14,100				

LOAD CHARTS FOR "A", "B", "C", AND "D" COUNTERWEIGHT (HOOK BLOCK)

LOAD RADIUS (FEET FROM FRONT)	110 TON MOBILIFT LOAD CHART												MLLC223
	STANDARD NON-REMOVABLE "A" COUNTERWEIGHT WITH "B", "C", "D" COUNTERWEIGHT ADDED												11192010
	FULLY EXTENDED BOOM LENGTH (FEET)						FULLY RETRACTED BOOM LENGTH (FEET)						
△°	21		33		45	△°	21		33		45		
0	63	160,000				63	160,000						
1	60	160,000	LOADED BOOM ANGLE			60	160,000	LOADED BOOM ANGLE					
2	57	160,000				57	160,000						
3	54	160,000				54	160,000						
4	50	160,000		160,000		50	152,800	66	152,100				
5	46	160,000	64	160,000		46	127,500	64	126,900				
6	42	140,300	62	139,800		42	109,200	62	108,600				
7	38	122,700	60	122,200		38	95,400	60	94,800				
8	33	108,900	58	108,400		33	84,500	58	84,000				
9	28	97,800	56	97,300	98,700	28	75,800	56	75,300	66	76,700		
10	21	88,700	54	88,200	64	21	68,500	54	68,100	64	69,500		
11	0	76,300	52	80,500	63	0	58,900	52	62,100	63	63,400		
12	SEE NOTE (E)		49	74,100	62	49	57,000	62	57,000				
13			47	68,500	60	47	52,600	60	53,900				
14			45	63,600	59	45	48,800	59	50,000				
15			42	59,400	57	42	45,500	57	46,700				
16			39	55,600	56	39	42,600	56	43,700				
17			36	52,300	54	36	39,900	54	41,100				
18			33	49,300	52	33	37,600	52	38,700				
19			30	46,600	51	30	35,500	51	36,500				
20			26	44,200	49	26	33,500	49	34,600				
21			22	41,900	47	22	31,800	47	32,900				
22			16	39,900	46	16	30,200	46	31,200				
23			0	36,800	44	0	27,800	44	29,800				
24					42			42	28,400				
25					40			40	27,100				
26					38			38	26,000				
27					36			36	24,900				
28					33			33	23,900				
29					31			31	23,000				
30					28			28	22,100				
31					26			26	21,500				
32					22			22	20,500				
33					19			19	19,700				
34					14			14	19,100				
35					0			0	18,000				

NOTE:

Specifications are provided in imperial dimensions. All equipment dimensions, designs, specifications, calculations, etc., as described, are subject to change at manufacturer's discretion at any time and without notice. Weights are approximate and may vary. Data herein is for informational purposes only and will not be construed to guarantee suitability of equipment for any particular as performance may vary with conditions encountered. Warranty will apply as written in standard contract form upon purchase of equipment. Capacities are for reference only and must not be used for any serial numbered machine. Serial numbered load charts may be obtained from Lift Systems, Inc.



MOBILIFT

110 TON

LOAD CHARTS FOR "A", "B", "C", "D", and "E" COUNTERWEIGHT (HOOK BLOCK)

LOAD RADIUS (FEET FROM FRONT)	110 TON MOBILIFT LOAD CHART										MLLC224	
	FOR USE WITH HOOK BLOCK ONLY										11/18/2010	
	STANDARD NON-REMOVABLE "A" COUNTERWEIGHT WITH "B", "C", "D", "E" COUNTERWEIGHT ADDED											
	FULLY EXTENDED BOOM LENGTH (FEET)					FULLY RETRACTED BOOM LENGTH (FEET)						
	△°	21	33	45		△°	21	33	45			
0	63	160,000				63	160,000					
1	60	160,000				60	160,000					
2	57	160,000				57	160,000					
3	54	160,000				54	160,000					
4	50	160,000	66	160,000		50	160,000	66	160,000			
5	46	160,000	64	160,000		46	151,800	64	151,200			
6	42	160,000	62	160,000		42	130,200	62	129,600			
7	38	145,800	60	145,300		38	113,800	60	113,300			
8	33	129,500	58	129,000		33	101,000	58	100,400			
9	28	116,400	56	115,900	66	117,300	28	90,600	56	90,100	66	91,500
10	21	105,600	54	105,100	64	106,500	21	82,100	54	81,600	64	83,000
11	0	90,900	52	96,100	63	97,400	0	70,600	52	74,500	63	75,800
12	SEE NOTE (E)		49	88,400	62	89,700	SEE NOTE (E)		49	68,500	62	69,800
13			47	81,800	60	83,100			47	63,300	60	64,500
14			45	76,100	59	77,300			45	58,800	59	60,000
15			42	71,100	57	72,300			42	54,900	57	56,000
16			39	66,700	56	67,800			39	51,400	56	52,500
17			36	62,700	54	63,900			36	48,300	54	49,400
18			33	59,200	52	60,300			33	45,500	52	46,600
19			30	56,000	51	57,100			30	43,000	51	44,100
20			26	53,100	49	54,200			26	40,700	49	41,800
21			22	50,500	47	51,600			22	38,600	47	39,700
22			16	48,100	46	49,100			16	36,700	46	37,800
23			0	44,400	44	46,900			0	33,900	44	36,000
24					42	44,900					42	34,400
25					40	43,000					40	32,900
26					38	41,300					38	31,600
27					36	39,600					36	30,300
28					33	38,100					33	29,100
29					31	36,700					31	28,000
30					28	35,400					28	26,900
31					26	34,100					26	26,000
32					22	33,000					22	25,000
33					19	31,900					19	24,200
34					14	30,900					14	23,400
35					0	29,200					0	22,100

NOTES:
 A) FLY SECTION CAPACITIES ARE LIMITED BY ANGLE. DO NOT USE LOAD RADIUS WHEN USING FLY SECTION.
 B) RATINGS ABOVE THE BOLD LINE ARE BASED ON THE MACHINE'S HYDRAULIC OR STRUCTURAL STRENGTH AND NOT STABILITY.
 C) RATINGS BELOW THE BOLD LINE ARE BASED ON 85% OF TIPPING.
 D) ALL CAPACITIES ARE IN POUNDS.
 E) TELESCOPE CYLINDER MUST BE FULLY RETRACTED AND AGAINST STOPS.

WARNING
 FOR BOOM LENGTHS LESS THAN 44' WITH FLY SECTION EXTENDED, THE RATED LOADS ARE DETERMINED BY BOOM ANGLE ONLY, IN THE COLUMN HEADED BY 45' BOOM. FOR BOOM ANGLES NOT SHOWN USE RATINGS OF THE NEXT LOWER BOOM ANGLE.

CAUTION!
 DO NOT EXTEND OR RETRACT COUNTERWEIGHT WITH ANY LOAD SUSPENDED ON HOOK OR FORKS.

NOTE:

Specifications are provided in imperial dimensions. All equipment dimensions, designs, specifications, calculations, etc., as described, are subject to change at manufacturer's discretion at any time and without notice. Weights are approximate and may vary. Data herein is for informational purposes only and will not be construed to guarantee suitability of equipment for any particular as performance may vary with conditions encountered. Warranty will apply as written in standard contract form upon purchase of equipment. Capacities are for reference only and must not be used for any serial numbered machine. Serial numbered load charts may be obtained from Lift Systems, Inc.



MOBILIFT

110 TON

POWER BOOM LIFTING EYE LOAD CHARTS WITH FULL COUNTERWEIGHT (A,B,C,D,E WEIGHTS)

LOAD RADIUS (FEET FROM FRONT)	110 TON MOBILIFT LOAD CHART											MLLC234	
	FOR USE WITH POWER BOOM LIFT EYE ONLY											11/19/2010	
	STANDARD NON-REMOVABLE "A" COUNTERWEIGHT WITH "B", "C", "D", "E" COUNTERWEIGHT ADDED												
	FULLY EXTENDED BOOM LENGTH (FEET)					FULLY RETRACTED BOOM LENGTH (FEET)							
	21		27		33			21		27		33	
		LOADED BOOM ANGLE		LOADED BOOM ANGLE				LOADED BOOM ANGLE		LOADED BOOM ANGLE		LOADED BOOM ANGLE	
0	58	220,463					58	220,463					
1	54	220,463	64	220,463			54	220,463	64	220,463			
2	50	220,463	61	220,463			50	220,463	61	220,463			
3	46	220,463	58	220,463	65	213,700	46	220,463	58	220,463	65	213,700	
4	42	213,200	55	213,200	63	203,300	42	179,600	55	179,500	63	179,500	
5	37	192,200	53	192,100	61	192,100	37	149,900	53	149,900	61	149,900	
6	32	164,900	50	164,800	59	164,800	32	128,500	50	128,400	59	128,400	
7	25	144,200	47	144,100	56	144,100	25	112,200	47	112,200	56	112,100	
8	17	128,100	43	127,900	54	127,900	17	99,500	43	99,400	54	99,400	
9	0	114,900	40	114,900	52	114,900	0	89,200	40	89,100	52	89,100	
10	SEE NOTE (D)		36	104,200	49	104,100	SEE NOTE (D)		36	80,700	49	80,700	
11			32	95,200	47	95,200			32	73,700	47	73,600	
12			28	87,600	44	87,600			28	67,700	44	67,600	
13			22	81,100	42	81,000			22	62,500	42	62,500	
14			15	75,400	39	75,300			15	58,100	39	58,000	
15			0	70,400	36	70,300			0	54,100	36	54,100	
16					32	65,900					32	50,600	
17					29	62,000					29	47,500	
18					25	58,500					25	44,800	
19					20	55,300					20	42,300	
20					14	52,500					14	40,000	
21					0	49,800					0	38,000	

NOTES:

- A) RATINGS ABOVE THE BOLD LINE ARE BASED ON THE MACHINE'S HYDRAULIC OR STRUCTURAL STRENGTH AND NOT STABILITY.
- B) RATINGS BELOW THE BOLD LINE ARE BASED ON 85% OF TIPPING.
- C) ALL CAPACITIES ARE IN POUNDS.
- D) TELESCOPE CYLINDER MUST BE FULLY RETRACTED AND AGAINST STOPS.

CAUTION!

DO NOT EXTEND OR RETRACT COUNTERWEIGHT WITH ANY LOAD SUSPENDED ON HOOK OR FORKS.

NOTE:

The ratings above the bold line are based upon machine's hydraulic or structural strength and not stability.

Ratings below bold line are based on 85% of tipping.

All capacities are in pounds.

CAUTION!

Do not extend or retract counterweight with any load suspended on hook.

LIFT SYSTEMS, INC.

OFFICE:

1505 - 7th Street
East Moline, IL 61244

MAILING ADDRESS:

P.O. Box 906
Moline, IL 61266

TEL:

+1-309-764-9842

FAX:

+1-309-764-9848

EMAIL:

liftit@lift-systems.com

WEB:

www.lift-systems.com