

MAIN BOOM LIFTING CAPACITY

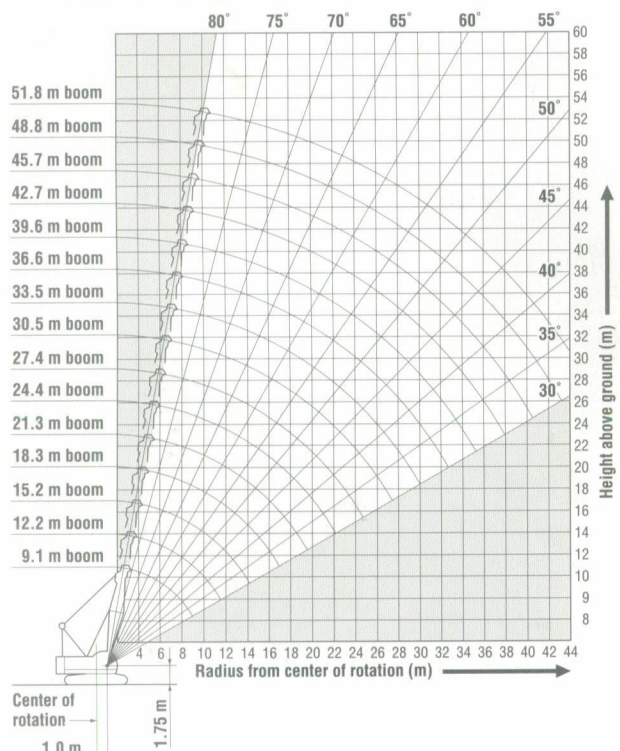
Rated loads in metric tons for 360° working area (Counterweight: 17.0 t)

Crawlers fully extended

Boom length m (ft)	9.1 (30)	12.2 (40)	15.2 (50)	18.3 (60)	21.3 (70)	24.4 (80)	27.4 (90)	30.5 (100)	33.5 (110)	36.6 (120)	39.6 (130)	42.7 (140)	45.7 (150)	48.8 (160)	51.8 (170)
3.5	55.0	50.0													
3.8	50.0	50.0													
4.0	49.0	47.5	44.2	4.5/36.1											
5.0	37.2	35.8	33.8	32.0	30.4										
6.0	28.0	27.9	27.3	26.0	24.8	23.8	22.7								
7.0	22.4	22.3	22.2	21.8	20.9	20.1	19.2	18.6	7.5/16.6						
8.0	18.6	18.4	18.3	18.2	18.0	17.3	16.6	16.1	15.5	14.9					
9.0	15.8	15.7	15.5	15.5	15.4	15.2	14.6	14.1	13.6	13.2	12.7	12.2			
10.0		13.7	13.6	13.5	13.4	13.3	12.9	12.5	12.1	11.7	11.3	10.9	10.5	10.2	
12.0		11.7/11.0	10.6	10.5	10.4	10.3	10.3	10.1	9.8	9.5	9.1	8.8	8.5	8.2	7.9
14.0			8.7	8.5	8.4	8.4	8.3	8.2	8.1	7.8	7.5	7.2	7.0	6.7	6.5
16.0				7.2	7.0	6.9	6.8	6.8	6.7	6.6	6.3	6.0	5.9	5.6	5.4
18.0					6.0	5.9	5.8	5.6	5.6	5.5	5.4	5.1	4.9	4.7	4.5
20.0						5.1	4.9	4.9	4.8	4.7	4.5	4.3	4.2	4.0	3.7
22.0							4.4	4.3	4.2	4.1	4.0	3.8	3.7	3.6	3.4
24.0								3.7	3.6	3.5	3.4	3.3	3.1	3.1	2.9
26.0									3.2	3.0	2.9	2.8	2.6	2.6	2.4
28.0										2.8	2.6	2.5	2.4	2.2	2.0
30.0											2.3	2.2	2.0	1.9	1.7
32.0												1.9	1.7	1.6	1.5
34.0													1.5	1.3	1.2
36.0														1.3	1.1

Note: 1. Rating according to DIN 15018/3 and prEN 13000.
 2. Rating shown in are determined by the strength of the boom or other structural components.
 3. Instruction in the operator's manual must be strictly observed when operating the machine.

WORKING RADIUS



FIXED JIB LIFTING CAPACITY PRELIMINARY

Rated loads in metric tons for 360° working area (Jib offset angle: 10°)

Working radius (m)	30.5 m		36.6 m		42.7 m	
	6.1 m	15.2 m	6.1 m	15.2 m	6.1 m	15.2 m
9.0 m	6.6					
10.0 m	6.6		6.6			
12.0 m	6.6	5.2	6.6		6.6	
14.0 m	6.6	5.2	6.6	5.2	6.6	5.2
16.0 m	6.2	5.2	6.0	5.2	5.8	5.2
18.0 m	5.1	5.2	4.9	5.2	4.7	5.1
20.0 m	4.3	4.7	4.1	4.5	3.9	4.3
22.0 m	3.6	4.0	3.4	3.8	3.2	3.6
24.0 m	3.1	3.4	2.9	3.2	2.7	3.0
26.0 m	2.6	3.0	2.4	2.8	2.2	2.6
28.0 m	2.2	2.6	2.0	2.4	1.7	2.2
30.0 m	1.9	2.3	1.6	2.0	1.3	1.8
32.0 m	1.6	2.0	1.3	1.7		1.4
34.0 m		1.7		1.4		1.1
36.0 m		1.4		1.1		
38.0 m		1.2				

Note: Due to our policy of continual product improvements all designs and specifications are subject to change without advance notice.



KOBELCO CONSTRUCTION MACHINERY CO., LTD.

3-13, Nihonbashi 1-chome, Chuo-ku, TOKYO, 103-8246 JAPAN
 Tel: ++81 (0) 3-3278-7080 Fax: ++81 (0) 3-3278-7141

KOBELCO CONSTRUCTION MACHINERY (EUROPE) B. V.

Bolderweg 50, 1332 AW Almere, The Netherlands
 TEL: +31-36-549-5500 (5563) FAX: +31-36-549-5558