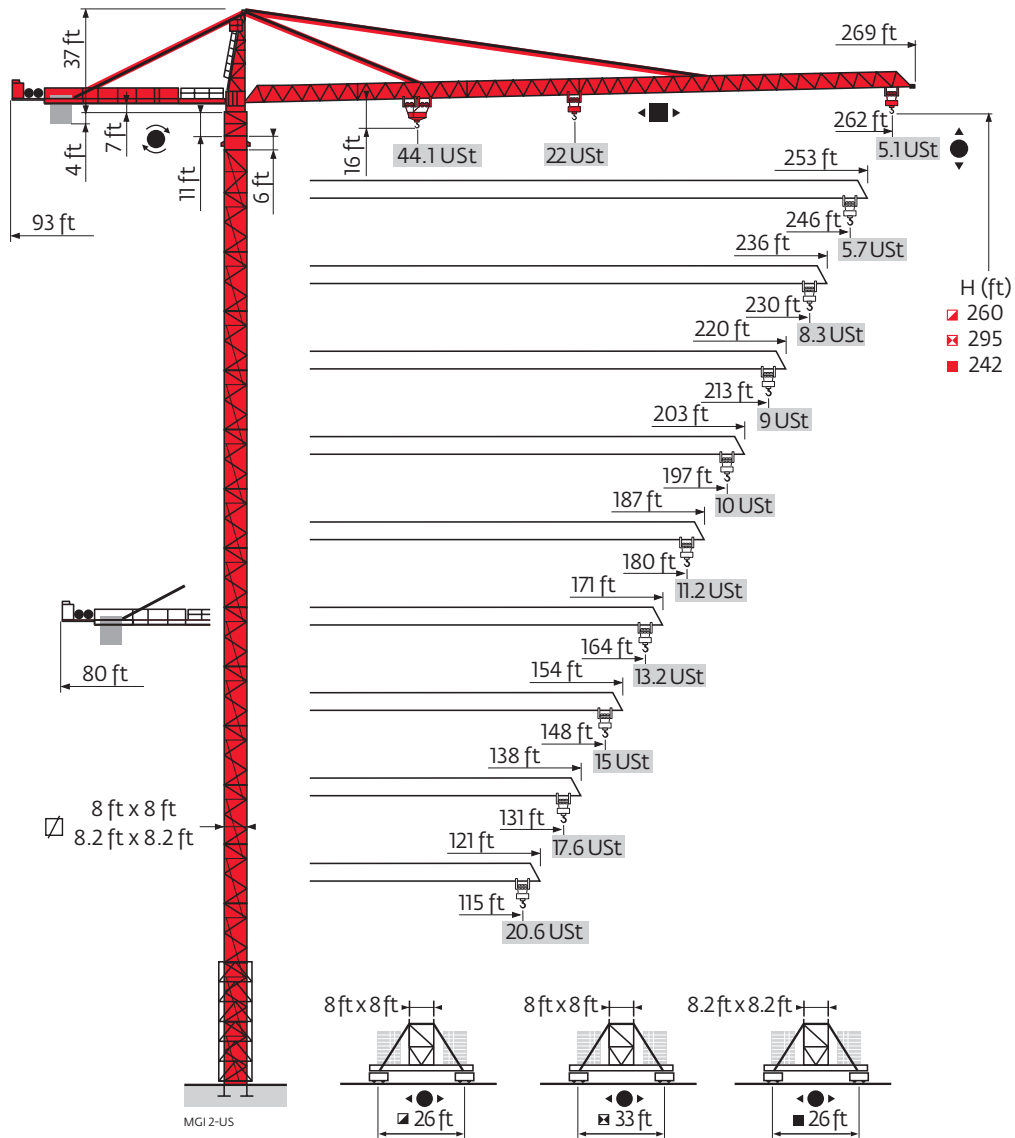


Potain MD 560 B

Data Sheets

FEM 1.001-A3

MD 560 B M20-M40

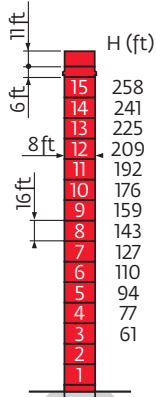


Values have been rounded

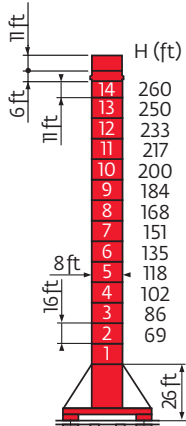
Mast

□ 8 ft x 8 ft

22 Ust
115 ft - 262 ft

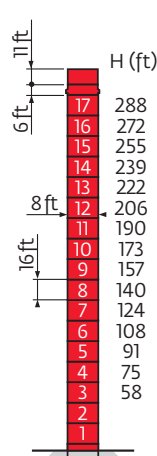


P 800 US

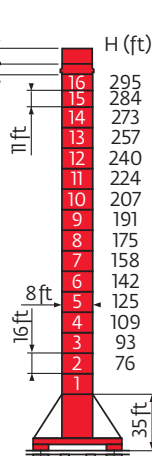


Y 800 A

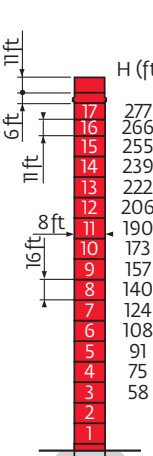
44.1 Ust
115 ft - 230 ft 246 ft - 262 ft



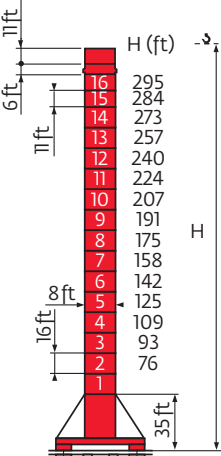
P 850 US



J 850 A



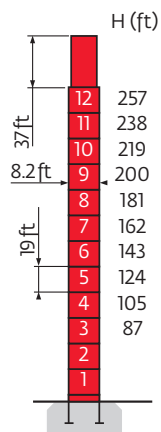
P 850 US



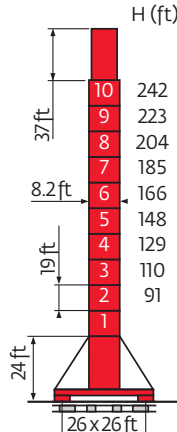
J 850 A

□ 8.2 ft x 8.2 ft

22 Ust
115 - 262 ft

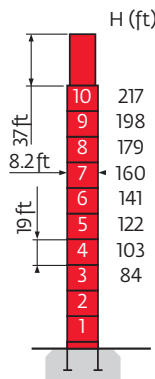


P 80 A

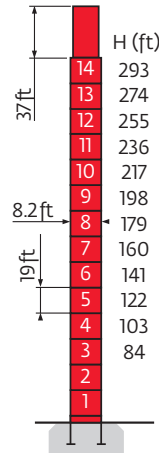


Y 80 A

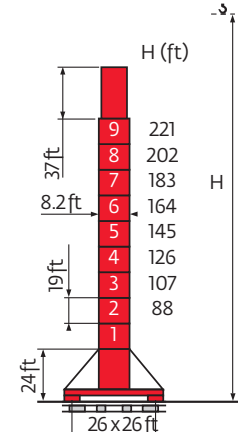
44.1 Ust
115 - 262 ft



P 80 A



P 81 A



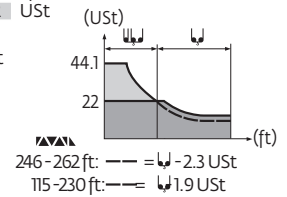
Y 80 A

A	Distance between collars
H1	Crane height
P	Crane weight (in service)
R	Horizontal reaction
	See climbing crane

Load charts

K 800	Height (ft)	Capacity (USt)	Capacity (ft)														
			81	82	89	98	105	115	131	148	164	180	197	213	230	246	262
	262 ft	10	22	21.8	20	17.6	16.3	14.7	12.5	10.8	9.4	8.3	7.4	6.6	6	5.4	4.9
	246 ft	10	22	20.2	17.9	16.5	14.9	12.7	10.9	9.6	8.5	7.5	6.7	6.1	5.5		
	230 ft	10	22	19.7	18.3	16.5	14.1	12.2	10.7	9.5	8.5	7.7	6.9				
	213 ft	10	22	19.8	18.4	16.5	14.2	12.3	10.8	9.6	8.6	7.7					
	197 ft	10	22	20.1	18.6	16.9	14.3	12.5	10.9	9.7	8.7						
	180 ft	10	22	20.5	19	17.1	14.7	12.7	11.1	9.9							
	164 ft	10	22	20.2	18.7	16.9	14.4	12.6	11								
	148 ft	10	22	21.9	20.4	18.4	15.8	13.7									
	131 ft	10	22	20.1	18.6	16.8	14.3										
	115 ft	10	22	21.1	19.5	17.6											

K 850	Height (ft)	Capacity (USt)	Capacity (ft)																		
			43	49	56	66	72	77	84	89	98	105	115	131	148	164	180	197	213	230	246
	262 ft	13	44.1	37.9	32.7	26.8	23.8	22	20.6	18.2	16.9	15.2	12.9	11.1	9.8	8.6	7.7	6.8	6.2	5.6	5.1
	246 ft	13	44.1	38.3	33	27.1	24	22	20.8	18.4	17.1	15.3	13.1	11.4	9.9	8.8	7.8	7.1	6.3	5.7	
	230 ft	13	44.1	41.2	34.1	30.4	26.1	23.8	22	21.3	19.2	16.4	14.3	12.6	11.2	10	9.1	8.3			
	213 ft	13	44.1	40.9	33.8	30.3	26	23.7	22	21.2	19.1	16.3	14.2	12.6	11.1	10	9				
	197 ft	13	44.1	41	34.0	30.3	26	23.7	22	21.2	19.1	16.4	14.2	12.6	11.1	10					
	180 ft	13	44.1	41.7	34.5	30.9	26.5	24.1	22	21.5	19.4	16.6	14.4	12.8	11.2						
	164 ft	13	44.1	43.1	35.7	32	27.4	25	22	20.1	17.2	15	13.2								
	148 ft	13	44.1	43.1	35.7	31.9	27.4	25	22	20.1	17.2	15									
	131 ft	13	44.1	36.6	32.7	28.1	25.7	22.6	22	20.6	17.6										
	115 ft	13	44.1	36.6	32.7	28.2	25.7	22.6	22	20.6											



Counter-jib ballast

22 USt			44.1 USt		
8818 - 13,228 lb			8818 - 13,228 lb		
Height (ft)	Capacity (ft)	Ballast (lb)	Height (ft)	Capacity (ft)	Ballast (lb)
262 ft	93 ft	66,139	262 ft	93 ft	66,139
246 ft	93 ft	61,729	246 ft	93 ft	61,729
230 ft	93 ft	61,729	230 ft	93 ft	66,139
213 ft	93 ft	52,911	213 ft	93 ft	57,320
197 ft	93 ft	48,502	197 ft	93 ft	52,911
180 ft	93 ft	44,092	180 ft	93 ft	48,502
164 ft	80 ft	52,911	164 ft	80 ft	57,320
148 ft	80 ft	48,502	148 ft	80 ft	52,911
131 ft	80 ft	35,274	131 ft	80 ft	44,092
115 ft	80 ft	30,865	115 ft	80 ft	35,274

Base ballast

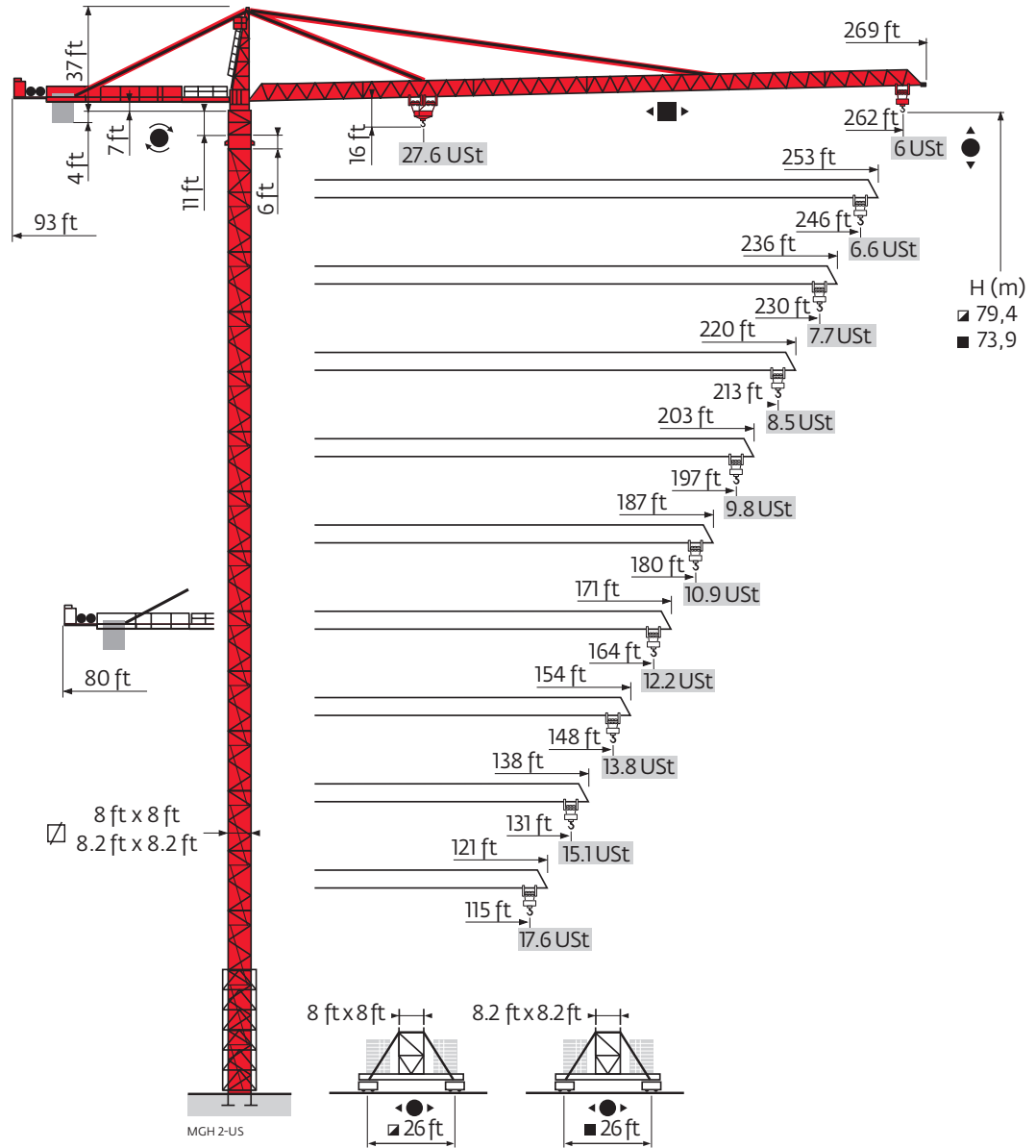
Height (ft)	Capacity (ft)	Capacity (USt)	260	250	233	217	200	184	168	151	135	118	102	86	69
8 ft	Y800A	22 USt	119.0	92.6	92.6	79.4	79.4	79.4	79.4	79.4	79.4	79.4	79.4	79.4	79.4
8 ft	J850A	44.1 USt	105.8	92.6	66.1	26.5	26.5	26.5	26.5	26.5	26.5	26.5	26.5	26.5	26.5
		115-230 ft	119	79.4	66.1	26.5	26.5	26.5	26.5	26.5	26.5	26.5	26.5	26.5	26.5
8.2 ft	Y80A	22 USt	92.6	92.6	92.6	92.6	92.6	92.6	92.6	92.6	92.6				
		44.1 USt	221	202	183	164	145	126	107	88					

Mechanisms

		22 USt					44.1 USt					hp	kW		
	270 LVF100	fpm	164	213	305	430	610	82	108	154	213	305	270	200	1745 ft
		USt	22	16.5	11	5.5	2.8	44.1	33.1	22	11	5.5			
	RVF173 Optima +	rpm	0 - 1									3 x 10	3 x 7.5		
	15 DVF16	fpm	0 - 164 (22 USt) - 0 - 220 (8.3 USt) - 0 - 328 (2.8 USt) 0 - 108 (44.1 USt) - 0 - 220 (9 USt) - 0 - 328 (2.8 USt)									15	11		
IEC 60204-32							kVA								
400 V(+10% -10%) 50 Hz / 480 V(+ 6% -10%) 60 Hz 400 V (+10%-10%) 50 Hz 480 V (+6%-110%) 60 Hz							270 LVF : 240 kVA RVF 173 Optima + : 315 kVA RVF 173 Optima + : 365 kVA								



	Hoisting
	Trolleying
	Slewing
	Traveling


MD 560 B M25

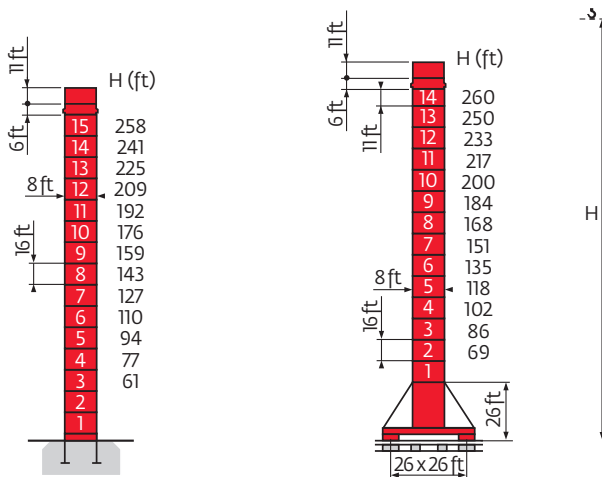


Mast

□ 8 ft x 8 ft

 27.6 USt  27.6 USt

 115 - 262 ft



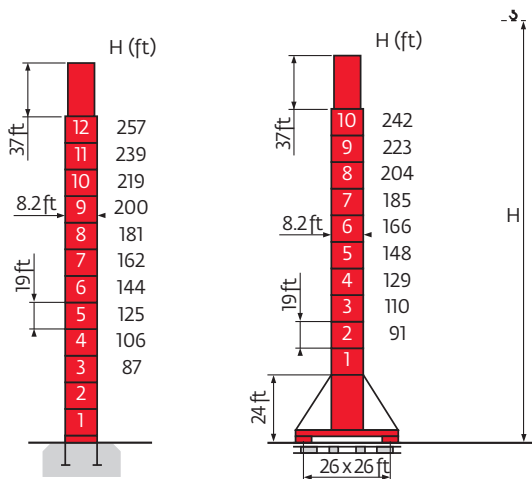
P 800 US

Y 800 A

□ 8.2 ft x 8.2 ft


 27.6 USt  27.6 USt

 115 - 262 ft



P 80 A

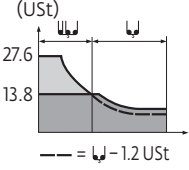
Y 80 A

A	Distance between collars
H1	Crane height
P	Crane weight (in service)
R	Horizontal reaction
	See climbing crane

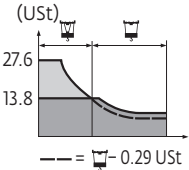
Load charts



262 ft	10 ▶	69	72	82	89	98	105	115	123	132	148	164	180	197	213	230	246	262	ft
▲▲▲▲		27.6	26	22.4	20.5	18.1	16.6	15.0	13.8	13.8	12.1	10.7	9.6	8.6	7.8	7.1	6.5	6	USt
246 ft	10 ▶	69	72	82	89	98	105	115	124	134	148	164	180	197	213	230	246	ft	
▲▲▲▲		27.6	26.2	22.6	20.6	18.2	16.9	15.1	13.8	13.8	12.2	10.8	9.7	8.7	7.9	7.2	6.6	USt	
230 ft	10 ▶		72	82	89	98	105	115	130	140	148	164	180	197	213	230	ft		
▲▲▲▲			27.6	23.8	21.7	19.3	17.9	16.0	13.8	13.8	13	11.5	10.3	9.3	8.5	7.7	USt		
213 ft	10 ▶		73	82	89	98	105	115	130	141	148	164	180	197	213	ft			
▲▲▲▲			27.6	23.9	21.8	19.3	17.9	16.1	13.8	13.8	13.1	11.6	10.4	9.4	8.5	USt			
197 ft	10 ▶		75	82	89	98	105	115	131	136	147	148	164	180	197	ft			
▲▲▲▲			27.6	25	22.9	20.3	18.8	16.9	14.3	13.8	13.8	13.7	12.1	10.9	9.8	USt			
180 ft	10 ▶		76	82	89	98	105	115	131	136	147	148	164	180	ft				
▲▲▲▲			27.6	25.1	23	20.4	19	17.4	14.4	13.8	13.8	13.8	12.2	10.9	USt				
164 ft	10 ▶		76	82	89	98	105	115	131	137	148	164	ft						
▲▲▲▲			27.6	25.2	23.1	20.5	19	17.1	14.6	13.8	13.8	12.2	USt						
148 ft	10 ▶		76	82	89	98	105	115	131	136	148	ft							
▲▲▲▲			27.6	25.2	23	20.4	19	17	14.4	13.8	13.8	USt							
131 ft	10 ▶		76	82	89	98	105	115	131	ft									
▲▲▲▲			27.6	25.4	23.1	20.5	19.1	17.1	14.6	USt									
115 ft	10 ▶		76	82	89	98	105	115	ft										
▲▲▲▲			27.6	25.4	23.1	20.5	19	17.1	USt										



262 ft	10 ▶	70	72	82	89	98	105	115	126	129	131	148	164	180	197	213	230	246	262	ft
▲▲▲▲		27.6	26.5	22.9	20.9	18.5	17.2	15.4	13.8	13.8	13.4	11.7	10.3	9.1	8.2	7.4	6.6	6.1	5.5	USt
246 ft	10 ▶	70	72	82	89	98	105	115	128	130	131	148	164	180	197	213	230	246	ft	
▲▲▲▲		27.6	26.7	23.1	21.2	18.7	17.4	15.7	13.8	13.8	13.7	11.8	10.4	9.3	8.3	7.5	6.7	6.2	USt	
230 ft	10 ▶		73	82	89	98	105	115	131	134	136	148	164	180	197	213	230	ft		
▲▲▲▲			27.6	24.4	22.3	19.7	18.3	16.5	14.1	13.8	13.8	12.6	11	9.8	8.8	8	7.3	USt		
213 ft	10 ▶		74	82	89	98	105	115	131	135	137	148	164	180	197	213	ft			
▲▲▲▲			27.6	24.5	22.4	19.8	18.4	16.6	14.2	13.8	13.8	12.6	11.1	9.9	8.9	8	USt			
197 ft	10 ▶		77	82	89	98	105	115	131	140	143	148	164	180	197	ft				
▲▲▲▲			27.6	25.6	23.5	20.8	19.3	17.4	14.9	13.8	13.8	13.2	11.7	10.5	9.4	USt				
180 ft	10 ▶		77	82	89	98	105	115	131	141	143	148	164	180	ft					
▲▲▲▲			27.6	25.7	23.6	20.9	19.4	17.5	15	13.8	13.8	13.3	11.8	10.5	USt					
164 ft	10 ▶		77	82	89	98	105	115	131	141	144	148	164	ft						
▲▲▲▲			27.6	25.8	23.7	20.9	19.5	17.5	15	13.8	13.8	13.3	11.8	USt						
148 ft	10 ▶		77	82	89	98	105	115	131	141	144	148	ft							
▲▲▲▲			27.6	25.8	23.6	20.9	19.5	17.5	15	13.8	13.8	13.3	USt							
131 ft	10 ▶		76	82	89	98	105	115	131	ft										
▲▲▲▲			27.6	25.5	23.4	20.7	19.2	17.3	15.1	USt										
115 ft	10 ▶		76	82	89	98	105	115	ft											
▲▲▲▲			27.6	25.5	23.4	20.7	19.3	17.6	USt											












Counter-jib ballast



		8818 lb - 13,228 lb	
▲▲▲▲			(lb)
262 ft	93 ft		79,366
246 ft	93 ft		74,957
230 ft	93 ft		70,548
213 ft	93 ft		61,729
197 ft	93 ft		61,729
180 ft	93 ft		57,320
164 ft	80 ft		61,729
148 ft	80 ft		61,729
131 ft	80 ft		44,092
115 ft	80 ft		39,683

Base ballast

8 ft	Y800A		H (ft)	260	250	233	217	200	184	168	151	135	118	102	86	69
			(USt)	119	93	93	79	79	79	79	79	79	79	79	79	79
8.2 ft	Y80A		H (ft)	242	223	204	185	166	148	129	110	91				
			(USt)	106	106	106	106	106	106	106	106	106				

Mechanisms

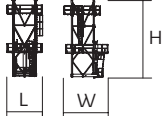

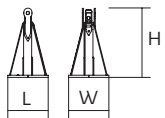
		27.6 USt / 27.6 USt										hp	kW		
															
	100 LVF 63 Optima	fpm	98	125	184	236	256	49	62	92	118	128	100	75	2382 ft
		USt	13.9	10.4	6.9	3.4	3	27.6	20.7	13.9	6.8	6			
	RVF183 Optima +	rpm	0 0.7										3 x 15	3 x 11	
	10 DVF 10	fpm	0-210 (27.6 USt) - 0-328 (13.8 USt) - 0-361 (6.9 USt)										10	7.4	
	Y 800 A RT 584 A1 2V	fpm	44 - 89										8 x 7	8 x 5.2	
 IEC 60204-32						 kVA									
400 V (+10% -10%) 50 Hz / 480 V (+6% -10%) 60 Hz						100 LVF : 120 kVA									

	Hoisting
	Trolleying
	Slewing
	Traveling

Component weights

Component Weights		L (ft)	W (ft)	H (ft)	lb (+/- 5%)	
Counter-jib		38.4	13.5	6.4	14,308	
		13.8	6.6	6.4	4365	
		36.2	15.9	6.8	10,858	
Towerhead		11	6.5	32.23	19,731	
Cab	Ultra View	16.4	7.5	8.2	4090	
Pivot	8 ft 8.2 ft	12.1 12.1	8.1 8.1	12.7 12.7	24,670 24,670	
Hoisting winch (+ rope)	100 LVF	10.4	5.2	5.7	9138	
Hoisting winch (+ rope)	270 LVF/ 320 LVF	16.7	7.5	7.3	22,256	
Jib section		①	34	9.7	10.2	11,354
		② 10 DVF	33.9	6.2	7.7	10,737
		② 15 DVF	33.9	6.2	7.7	11,409
		③	33.5	6.2	7.9	6537
		④	33.6	6.2	7.6	5897
		⑤	33.6	6.2	7.6	6162
Jib section		⑥	17.5	6.2	7.2	3748
		⑦	17.5	6.2	6.7	2,271
		⑨	17	6.2	6.5	1202
		⑩	16.9	6.2	6.5	1102
Trolley	44.1 Ust	13	7.2	5.5	3131	
Trolley	22 Ust	8.5	7.3	5.5	1645	
Hookblock		44.1 Ust	8.1	1.2	9.4	4050
		22 Ust	5.5	0.9	8	1336

Component weights

		L (ft)	W (ft)	H (ft)	kg (+/- 5%)
T850A climbing cage (halves)		33.3 33	15.3 15.4	10.8 8.4	20,348 8135
KRMT 849A KMT 850.10A K850./KR800A1		17.2 17.5 17.5	8.4 8.3 8.3	8.3 8.2 8.2	9017 12,015 11,905
KM850.10B1 K850/KR800B1		33.8 33.6	8.1 8.3	8.3 8.2	22,200 21,451
KRMT 849C KMT 850.10C		11.7 12	8.4 8.3	8.3 8.2	7066 9325
P800US P850US		2.5 2.3	2.5 2.3	5.9 5.5	1477 2127

Notes

Notes

Constant improvement and engineering progress make it necessary that we reserve the right to make specification, equipment and price changes without notice. Illustrations shown may include optional equipment and accessories, and may not include all standard equipment.



www.manitowoc.com

Manitowoc Cranes

Regional Headquarters

Americas

Manitowoc, Wisconsin, USA
Tel: +1 920 684 6621
Fax: +1 920 683 6277

Shady Grove, Pennsylvania, USA
Tel: +1 717 597 8121
Fax: +1 717 597 4062

Europe, Middle East, Africa

Ecully, France
Tel: +33 472 18 2020
Fax: +33 472 18 2000

China

Shanghai, China
Tel: +86 21 6457 0066
Fax: +86 21 6457 4955

Greater Asia-Pacific

Singapore
Tel: +65 6264 1188
Fax: +65 6862 4040

Potain MD 560 B
Code 11-004-.75M-0211