

# 5005H

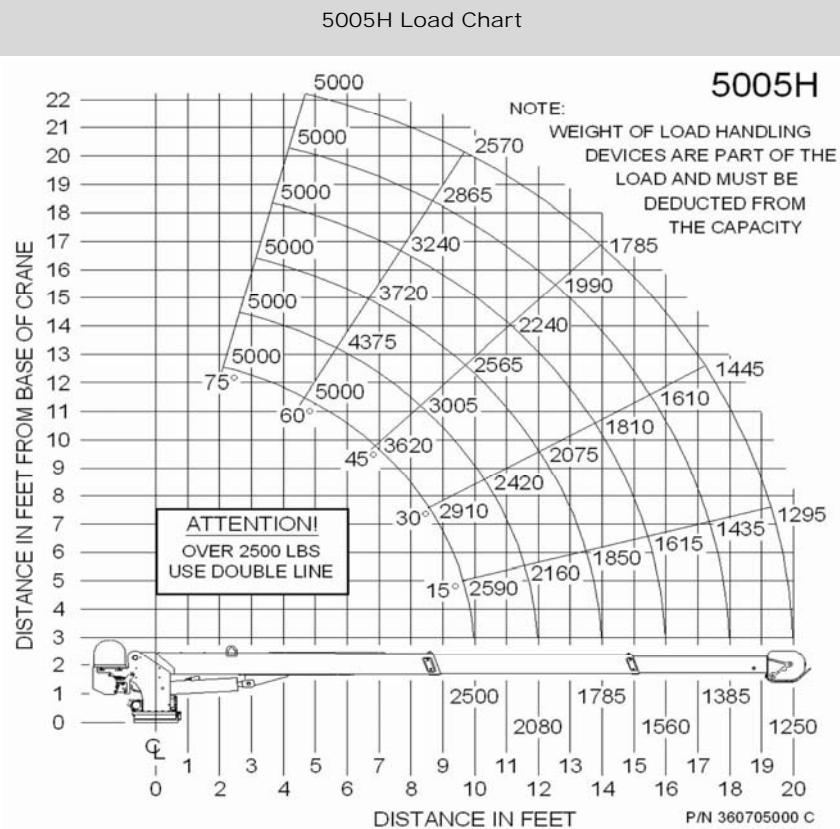
## Specifications

Weight	1,382 lbs (627 kgs)
Length	13' (3.96 m)
Width	1' 11" (.58 m)
Height	2' 11.25" (.90 m)
Hydraulic Requirements	8 gallons (30 L) per minute, at 2,750 psi (189.6 bar)
Base Plate Dimensions	16.75" x 16.75" (.43 m x .43 m)
Boom Down	11-15 seconds (full stroke of cylinder)
Boom Retract	10-14 seconds (full stroke of cylinder)
Full 360° Boom Rotation	34-56 seconds

\*Truck must be equipped with appropriate outriggers, throttle control, tachometer, PTO, pump and hydraulic reservoir.

## Lifting Capacities

Reach	Manual/Power Boom Extension
3' (.9 m)	5,000 lbs (2,268 kgs)
4' (1.22 m)	5,000 lbs (2,268 kgs)
5' (1.5 m)	5,000 lbs (2,268 kgs)
6' (1.8 m)	4,165 lbs (1,890 kgs)
7' (2.1 m)	3,570 lbs (1,619 kgs)
8' (2.4 m)	3,125 lbs (1,417 kgs)
9' (2.7 m)	2,775 lbs (1,259 kgs)
10' (3.0 m)	2,500 lbs (1,134 kgs)
11' (3.3 m)	2,270 lbs (1,029 kgs)
12' (3.7 m)	2,080 lbs (943 kgs)
13' (3.9 m)	1,930 lbs (871 kgs)
14' (4.3 m)	1,785 lbs (810 kgs)
15' (4.6 m)	1,665 lbs (755 kgs)
16' (4.9 m)	1,560 lbs (707 kgs)
17' (5.2 m)	1,470 lbs (667 kgs)
18' (5.5 m)	1,385 lbs (629 kgs)
19' (5.8 m)	1,315 lbs (596 kgs)
20' (6.1 m)	1,250 lbs (567 kgs)



Auto Crane Company / 4707 N. Mingo Rd. Tulsa, OK 74117  
918-836-0463 / AutoCrane.com

