



# SUMITOMO

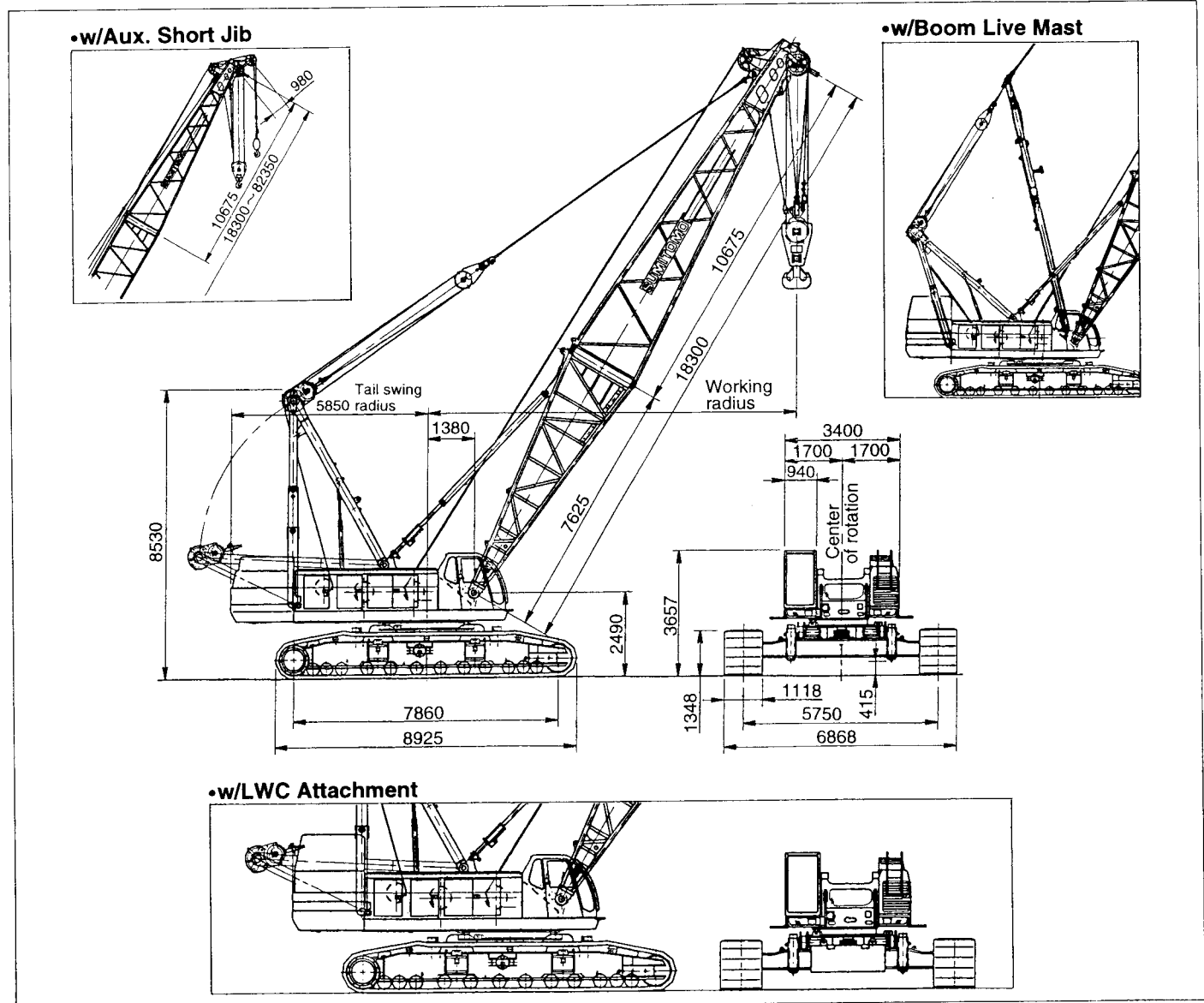
## PAX Series

# SC 1500-2

## 150-M ton Hydraulic Crawler Crane

# Technical Data

### ■ General Dimensions:



## CRANE BOOM:

Lattice construction, round tubular main chords, alloy, hi-ten steel, with bracing of round steel tubing.	
Boom connections	In-line pin connections at 2.1m deep and 2.1m wide.
Basic boom	Two-piece, 18.30m basic length; 7.625m bottom section and 10.675m tapered crane top section.
Boom head machinery	Five head sheaves and two guide sheaves mounted on anti-friction bearings.
Two hanger sheaves	Optional extra; each mounted on anti-friction bearing at both ends of boom head shaft outside five head sheaves, and required in a case of 150ton lift.
Heavy-duty boom extensions	Optional extra; available in 3.05m, 6.10m and 9.15m lengths with dual pendants.
Light-duty boom extension	Optional extra; available in 12.20m lengths with dual pendants.
Maximum boom length	85.40m

## FLY JIB:

Optional extra; lattice construction, round tubular main chords, alloy hi-ten steel, with bracing of round steel tubing having in-line pin connections at 0.762m deep and 0.914m wide, jib strut w/backstops, rope guide sheave and guyline cables, and jib head machinery with single sheave mounted on anti-friction bearings. This attachment can be mounted on 10.675m tapered top section, and is available for light load lifting operation with less than 15ton with 2-part hoist line (or less than 13.5ton with single part hoist line).	
Basic fly jib	Two-piece, 12.20m basic length; 6.10m bottom and top sections.
Fly jib extensions	Available in 6.10m length with pendants.
Maximum fly jib length	30.50m
Boom plus fly jib length	Max. 73.20m + 30.50m

## AUXILIARY SHORT JIB:

Optional extra; all-welded construction having single sheave head machinery. This attachment pinned to 10.675m tapered top section, and is available for 13.5ton lift as maximum with single part hoist line.

## HOOK BLOCKS:

150t, five sheaves plus one in-lined hanger sheave with duplex hook	Optional extra.
100t, five sheaves with duplex hook	Optional extra; available from an 150ton hook block by dismounting an in-lined hanger sheave.
80t, three sheaves	Optional extra.
35t, single sheave	Optional extra.
13.5t, ball hook	Optional extra.

## BOOM LIVE MAST:

Optional extra; All-welded, box type construction, mounted in front of upper revolving frame. This mast attaches bridle with larger sheaves of a 21.4 D/d ratio for 16-part boom hoist rope reeving. Boom live mast is required when boom length is over 70.15m, and/or when mounting fly jib from 12.20m thru 30.50m on boom of 70.15m and 73.20m and is also available in range of boom length from 48.80m thru 67.10m for upgrading crane capacity.

## BAIL AND BRIDLE:

All-welded construction; provided with larger sheaves of a 21.4 D/d ratio on both bail and bridle for 16-part boom hoist rope reeving. Bail mounted on A-frame gantry, and bridle suspended between a 16-part boom hoist rope and pendant ropes connecting to tip of a 10.675m tapered top section.

## DRUM DATA:

Drum	Root dia.	Type	Line speed (Hoisting, Lowering)	Cable
Front (main crane hoist)	571mm	Parallel grooved	100 ~ 2mpm	28mm
Rear (aux. crane hoist)	571mm	Parallel grooved	100 ~ 2mpm	28mm
Boom hoist	504mm	Parallel grooved	(23~1mpm) × 2-line	22.4mm

## Notes:

1. Line speed is based on drum first layer and rated engine rpm.
2. Hoisting line speed varies under load and operating conditions.

# Liftcrane Working Ranges

SUMITOMO  
SC 1500-2

