

# UNIC Truck Crane



**Model UR1592** by SPYDERCRANE.com,LLC



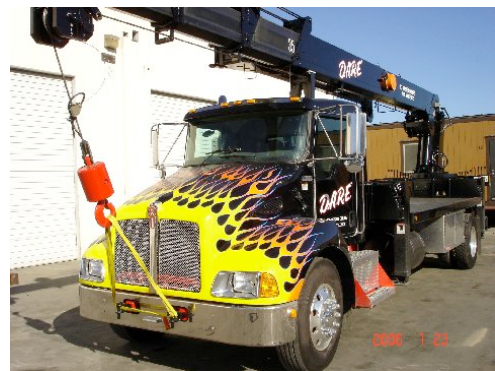
Capacity 30,000 lbs. - at 4ft



Boom Length 92 ft. - Retracted 28 ft.



Rear Mount or Behind the Cab Mount



33,000 GVWR with Great Hauling Capacity

**WORLD CLASS QUALITY FROM JAPAN. INDUSTRY DESIGN LEADER.**



Operator's Platform



Remote Control



Mounting Bolts

# UNIC Truck Crane



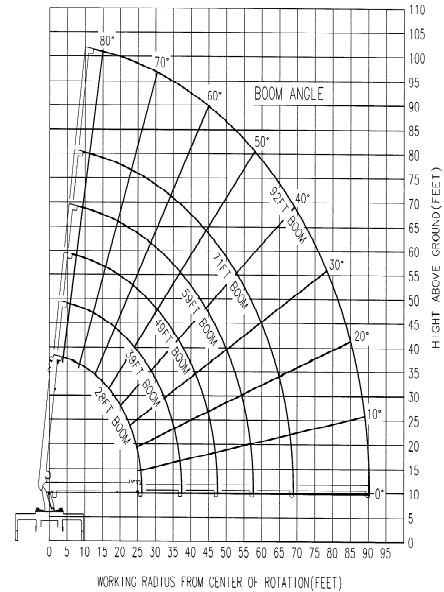
## Model UR1592 by SPYDERCRANE.com, LLC

### Performance Specifications

### Boom Range Diagram

Model U1592 Telescopic Boom Design	
Maximum Lift Capacity	30,000 lbs. @4 ft.
Lift Capacity @ 20 Feet	7,140 lbs.
Lift Capacity @ 40 Feet	2,380 lbs.
Lift Capacity @ 60 Feet	880 lbs
Lift Capacity @ 75 ft.	330 lbs.
Tip Height	102 feet
Working Radius	4 feet to 90 feet
Boom Length	28 feet to 92 feet
Boom Sections	Four (4)
Swing Rotation	360° Continuous
Out & Down Outriggers	Two Main – Two Auxiliary
Operating Weight	13,000 lbs.
Minimum Chassis	33,000 GVWR

RANGE DIAGRAM:



### Model UR1592 Load Chart

BOOM LENGTH						
Boom Radius	28 feet	39 feet	49 feet	59 feet	71 feet	92 feet
4	30000					
5	23470					
8	16290	13770	13820			
10	13690	12960	12610	12250		
12	11720	11060	10710	10450	9100	
15	9700	9120	8770	8480	7400	
20	7140	6960	6680	6410	6100	4430
25		5220	5180	5110	4910	3390
30		4070	3720	4030	3920	2770
35		2840	2820	3040	3060	2290
40			2290	2290	2380	1870
45			1560	1800	1740	1520
50				1430	1430	1270
55				940	1100	1030
60					880	790
65					570	590
70						460
75						330