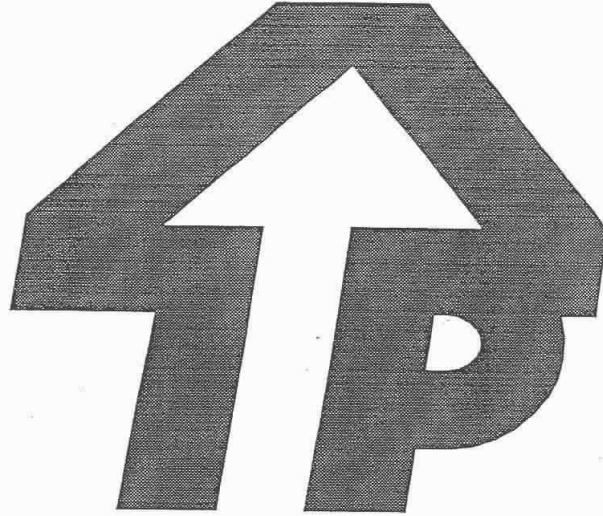


POTAIN

MR150



CE

1

MACHINE N° 78379

Manufacturer

POTAIN S.A.
18, rue de Charbonnières
BP 173
69132 ECULLY CEDEX
FRANCE

Made in France

Execution No

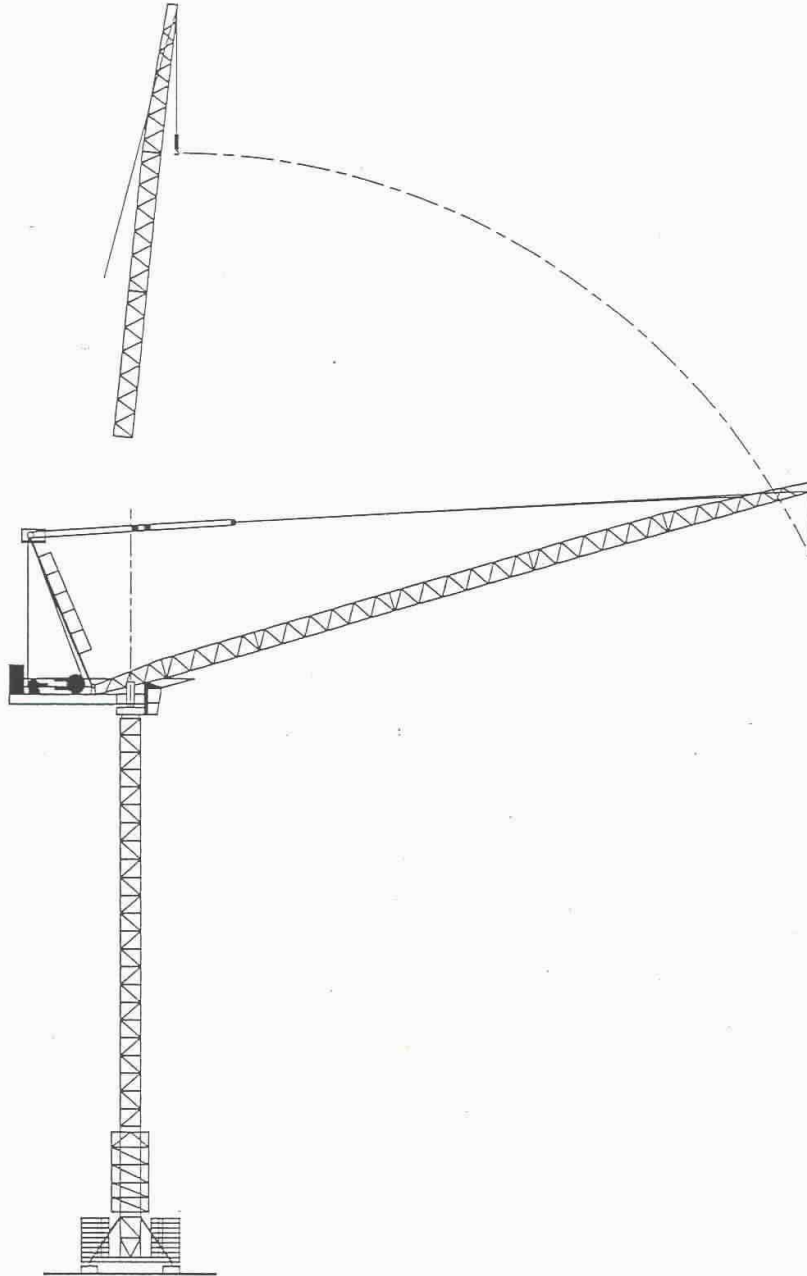
Issued

Edition N°

STANDARD **CE**
DIN 15018-1 : 1974
DIN 15019-1 : 1979
FEM 1.001 : 1987
AS1418.4 : 2001

The corresponding weighted sound intensity level amounts to dB(A)
The acoustic power level emitted by the hoist winch amounts to dB(A)

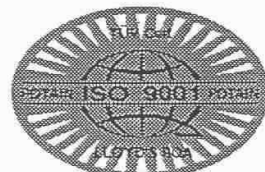
Reproduction prohibited © POTAIN 1994



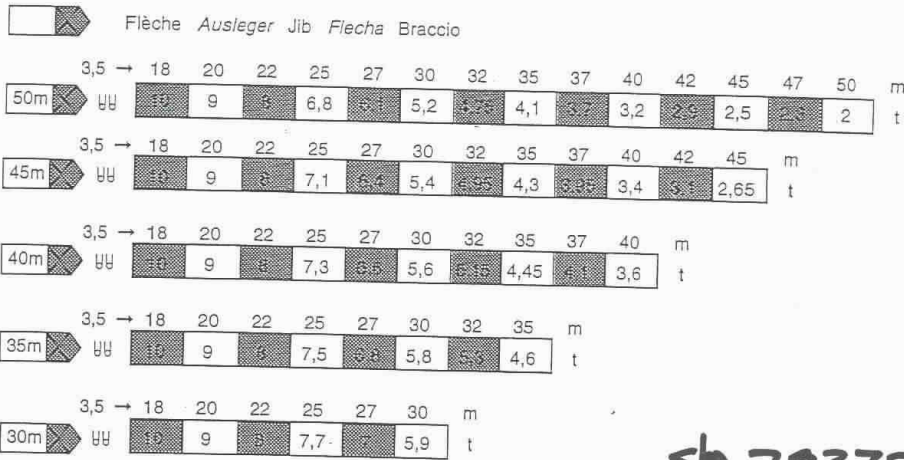
MR 150

sh 78379

POTAIN 

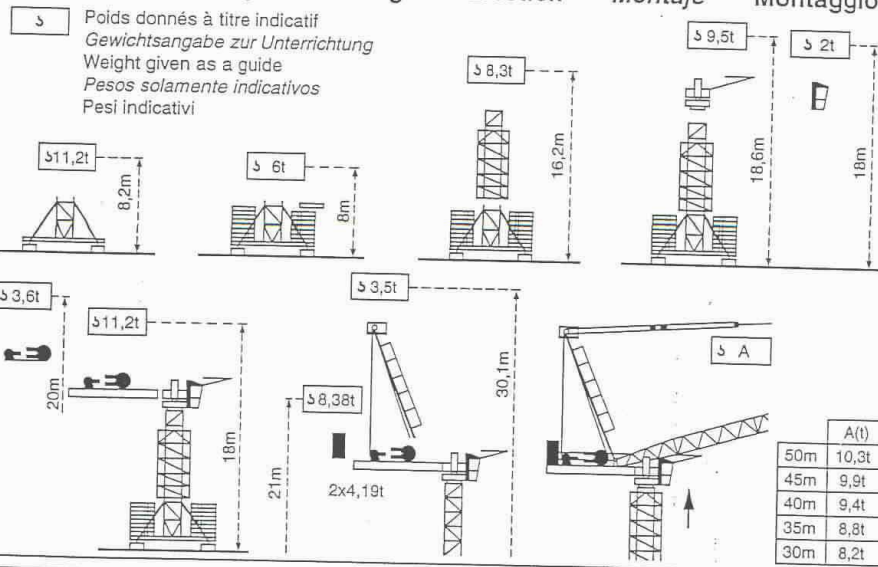


Courbes de charges Lastkurven Load diagrams
Curvas de cargas Curve di carico

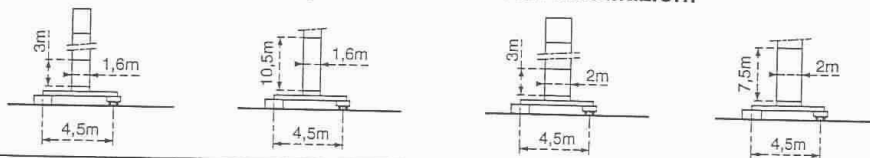


SP 78379

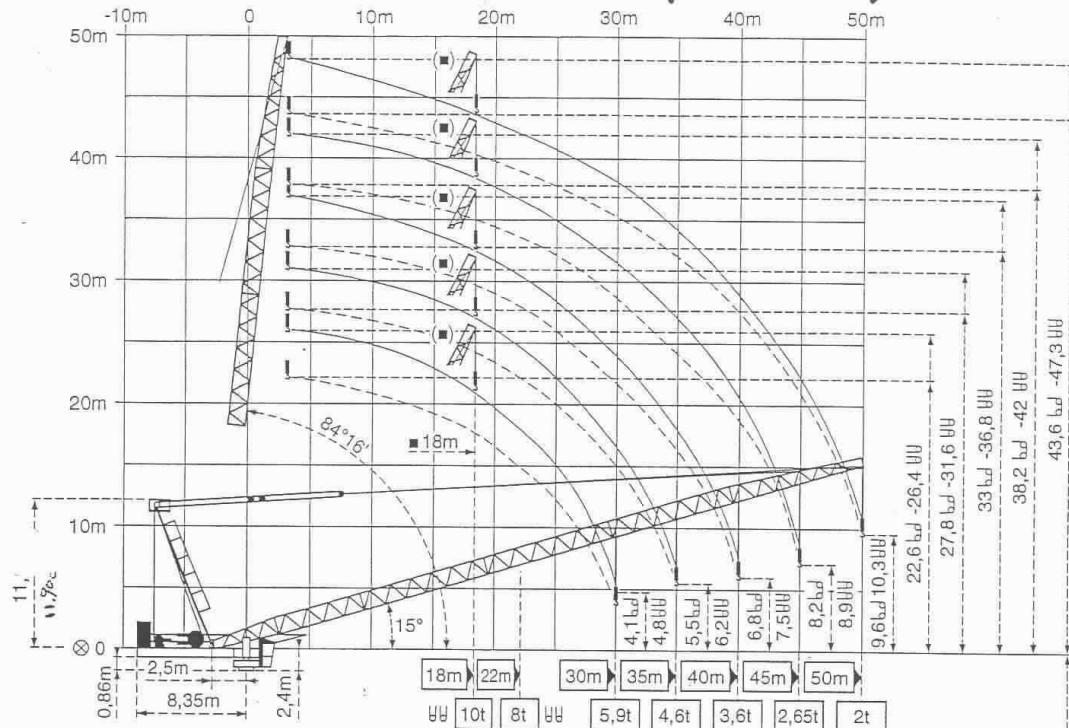
Montage Montage Erection Montaje Montaggio



Autres implantations Ausstellmöglichkeiten Mounting possibilities
Otras implantaciones Atri installazioni



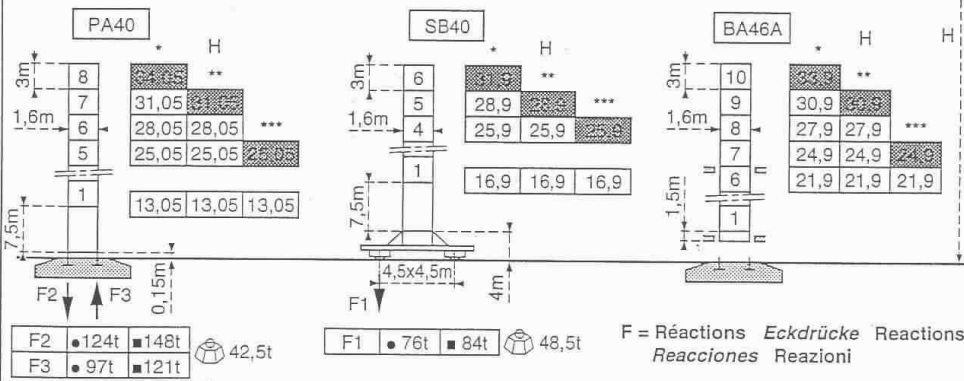
- En service
 - Hors service
 - In Betrieb
 - Ausser Betrieb
 - In service
 - Out of service
 - En servicio
 - Fuera de servicio
 - In servizio
 - Fuori servizio
- ⊆ A vide sans lest avec flèche et hauteur maximum.
- ⊆ Ohne Last und Ballast mit Maximalausleger und Maximalhöhe.
- ⊆ Without load and ballast with longest jib and maximum height.
- ⊆ Sin carga, sin lastre con flecha y altura máxima.
- ⊆ A vuoto senza zavorre e con braccio massimo e altezza massima.



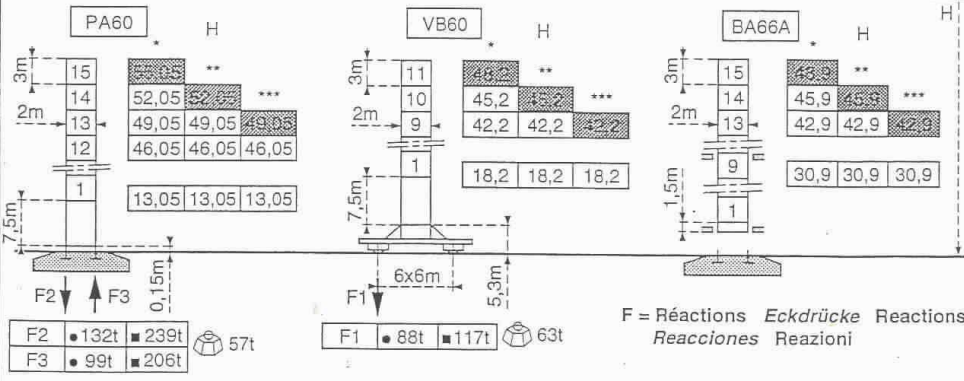
Axe articulation flèche Auslegergelenkachse
 ⊗ Jib hinge shaft Eje articulación de flecha
 Asse cerniera braccio

Position girouette Windfreistellung
 18m (■) Weathervaning position
 Posición veleta Libera rotazione

Mature Mast
 Mastil
 Torre
 1.6m



















Mature Mast
 Mastil
 Mast
 2m



Flèche - Ausleger - Jib - Flecha - Braccio *30 - 35 m ** 40 - 45 m *** 50m

Mécanismes *Antriebe* Mechanisms *Mecanismos* Meccanismi

				m/min	t		ch-PS hp	kW
Levage <i>Heben</i> Hoisting <i>Elevación</i> Sollevamento	55 RCS 20 ▲ ● ▼			0 → 52	4	552m >552m*	55	40
				0 → 104	2			
				0 → 26	8			
				0 → 52	4			
Levage <i>Heben</i> Hoisting <i>Elevación</i> Sollevamento	55 RCS 25 ▲ ● ▼			0 → 42	5	430m >430m*	55	40
				0 → 84	2,5			
				0 → 21	10			
				0 → 42	5			
Relevage - <i>Ausleger-Einziehen</i> - Luffing <i>Elevación de flecha</i> - Brandeggio		75 VTV 50		1mn 36s			75	55
Orientation - <i>Schwenken</i> - Slewing <i>Orientación</i> - Rotazione		RCV 145		0 → 0,8 tr/min U/min rpm			2x6	2x4,4
Translation - <i>Kranfahren</i> Travelling <i>Traslación</i> - Traslazione	SB R≥10m  VB R≥13m	RT 324		12,5 - 25			2x7	2x5,2
		RT 443 A1		15 - 30			4x5	4x3,7
Réseau - <i>Netzstrom</i> - Mains supply - <i>Red</i> - Reta elettrica						CEI 38 <i>IEC 38</i>	400V(+6%-10%) 50 Hz	
Puissance électrique nécessaire - <i>Anschlusswert</i> - Necessary electric power <i>Potencia eléctrica necesaria</i> - Potenza elettrica necessaria							150 kVA	
Groupe électrogène - <i>Stromaggregat</i> - Generator set - <i>Grupo electrogeno</i> - Gruppo elettrogeno							*	

* Nous consulter - *Auf anfrage* - Consult us - *Consultarnos* - Consultateci

slm 78379

Conforme aux directives CEE 84/534 et 87/405 sur le niveau acoustique - *Gemäss EWG-Richtlinien 84/534 und 87/405 für den Schall-Leistungspegel*
In compliance with the EEC 84/534 and 87/405 Instructions on noise level - *Conforme con las directivas CEE 84/534 y 87/405 sobre el nivel acustico*
Conforme alle direttive CEE 84/534 e 87/405 sul livello acustico

CE

NF E 52081.82

POTAIN 

GRUPE LEGRIS INDUSTRIES

18, Rue de Charbonnières, B.P. 173-F 69132 ECULLY Cedex
Tél. 72.20.20.20 - Téléc 330 179 - Fax 72.20.20.00

POTAIN GmbH Deutschland Tel : 06.105.704.0
POTAIN U.K. Great Britain Tel : 0895.44.52.61
Simma POTAIN Italia Tel : 02.97.96.71
POTAIN Portugal Portugal Tel : 02.968.08.89

MR 150

Ref: 1990 48 LBI 7

11/19/1990

15 - *Anschmungen vorhaben* - Substit in modification - *Modificación de accesorios*

Modifications

Printed in France

Realizador