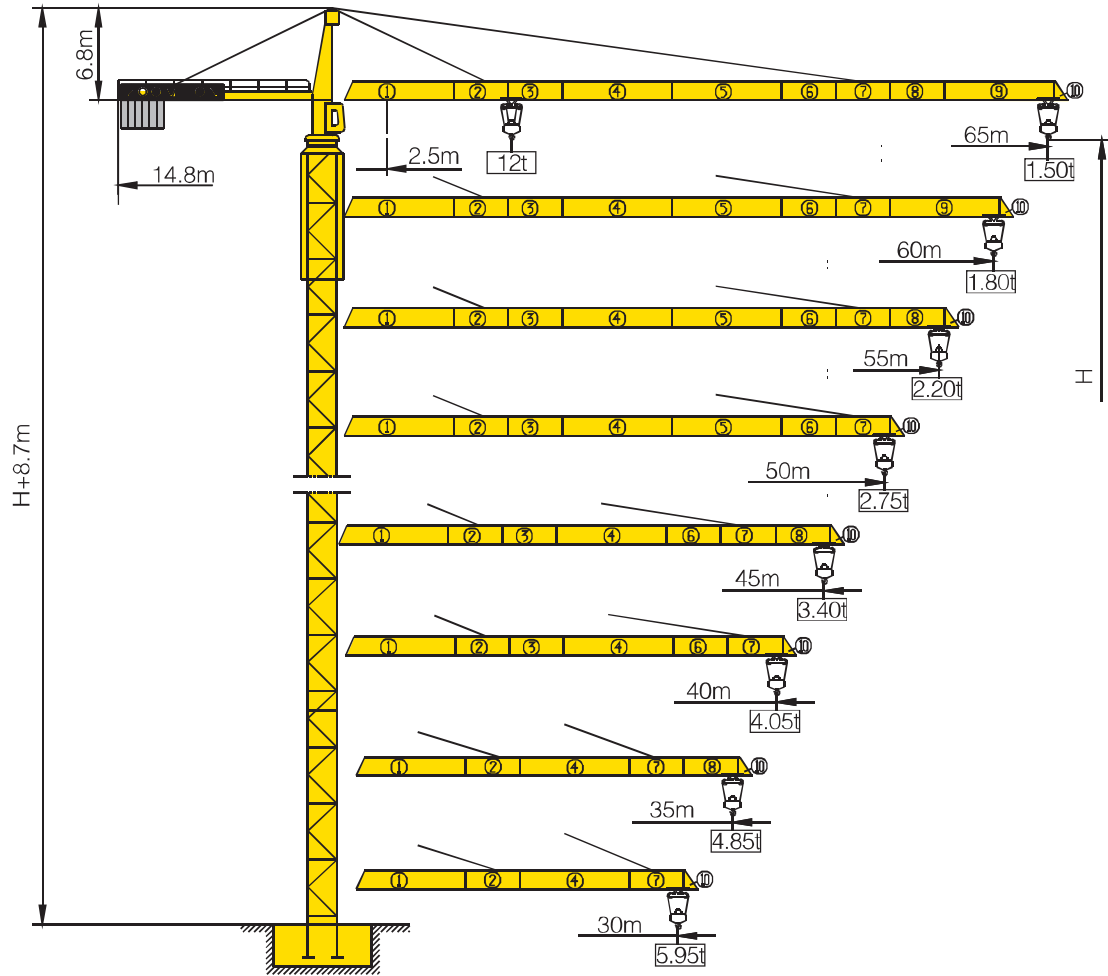




TC6515B-12



Counter-jib ballast

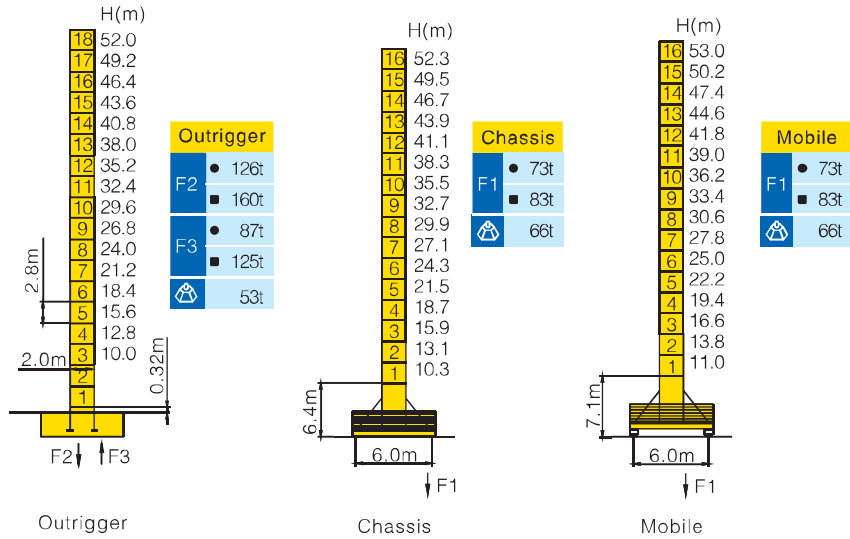
		 (Kg)	PHZ3000	PHZ2500	PHZ2000	PHZ1500
65m	14.8m	24000	6	1	1	1
60m	14.8m	21500	6	0	1	1
55m	14.8m	20000	6	0	1	0
50m	14.8m	18500	5	0	1	1
45m	14.8m	16500	5	0	0	1
40m	14.8m	14500	4	1	0	0
35m	14.8m	12000	2	1	1	1
30m	14.8m	10000	2	1	0	1

Working Height(m) @ Wall-tie Location(m)

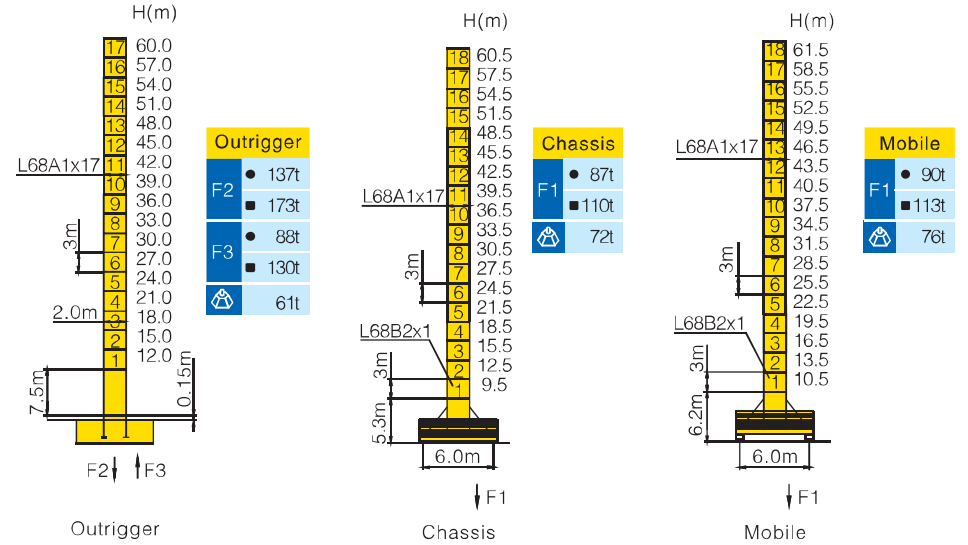
Model Detail	Mast Code	Wall-tie #1	Wall-tie #2	Wall-tie #3	Wall-tie #4	Wall-tie #5	Wall-tie #6	Wall-tie #7
TC6515B-12	MQ1	77.2 @ 37	102.4 @ 62.2	124.8 @ 87.4	144.4 @ 109.8	164 @ 129.4	183.6 @ 149	200 @ 168.6
TC6515B-12E	L68A1	87 @ 47	111 @ 74	135 @ 98	159 @ 122	183 @ 146	200 @ 170	—

Masts Reactions

TC6515B-12



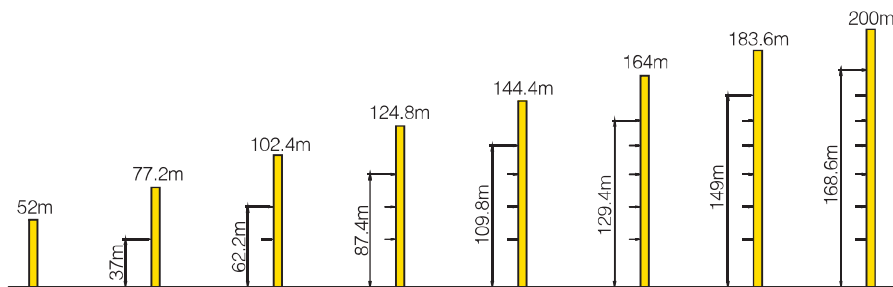
TC6515B-12E



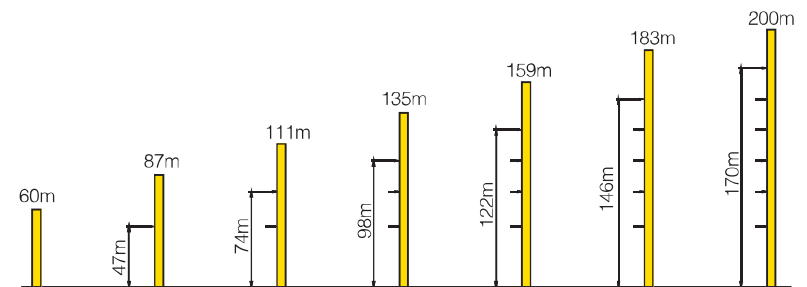
● Reactions in service ■ Reactions out of service
 ⚠ Without load and ballast with longest jib and maximum height
 Ⓞ For more erecting solutions, consult us!

Anchorage

TC6515B-12






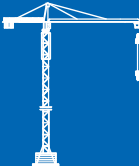


TC6515B-12E



Load diagrams

		Max.Capacity m/t	12.5	15.0	17.5	20.0	22.5	25.0	27.5	30.0	32.5	35.0	37.5	40.0	42.5	45.0	47.5	50.0	52.5	55.0	57.5	60.0	62.5	65.0
65m (R=66.75)	6t	2.5-23.7m	6.00					5.64	5.02	4.50	4.07	3.70	3.38	3.10	2.85	2.63	2.44	2.26	2.11	1.96	1.83	1.71	1.60	1.50
	12t	2.5-13.1m	12.0	10.25	8.49	7.23	6.26	5.49	4.87	4.35	3.92	3.55	3.23	2.95	2.70	2.48	2.29	2.11	1.96	1.81	1.68	1.56	1.45	1.35
60m (R=61.75)	6t	2.5-24.5m	6.00					5.86	5.22	4.68	4.23	3.85	3.52	3.23	2.98	2.75	2.55	2.37	2.21	2.06	1.92	1.80		
	12t	2.5-13.5m	12.0	10.57	8.81	7.5	6.5	5.71	5.07	4.53	4.08	3.7	3.37	3.08	2.83	2.6	2.4	2.22	2.06	1.91	1.77	1.65		
55m (R=56.75)	6t	2.5-25.6m	6.00					5.50	4.95	4.48	4.08	3.73	3.43	3.16	2.93	2.71	2.53	2.35	2.20					
	12t	2.5-14.0m	12.0	11.11	9.27	7.90	6.86	6.03	5.35	4.80	4.33	3.93	3.58	3.28	3.01	2.78	2.56	2.38	2.20	2.05				
50m (R=51.75)	6t	2.5-27.2m	6.00					5.92	5.32	4.82	4.40	4.03	3.71	3.43	3.17	2.95	2.75							
	12t	2.5-14.8m	12.0	11.89	9.93	8.48	7.37	6.49	5.77	5.17	4.67	4.25	3.88	3.56	3.28	3.02	2.80	2.60						
45m (R=46.75)	6t	2.5-28.6m	6.00					5.67	5.14	4.69	4.30	3.96	3.66	3.40										
	12t	2.5-15.6m	12.00	10.53	9.00	7.83	6.90	6.14	5.52	4.99	4.54	4.15	3.81	3.51	3.25									
40m (R=41.75)	6t	2.5-29.1m	6.00					5.78	5.25	4.79	4.39	4.05												
	12t	2.5-15.9m	12.00	10.79	9.18	7.97	7.04	6.25	5.63	5.14	4.64	4.24	3.90											
35m (R=36.75)	6t	2.5-29.3m	6.00					5.85	5.31	4.85														
	12t	2.5-16.0m	12.00	10.86	9.29	8.08	7.12	6.35	5.70	5.16	4.70													
30m (R=31.75)	6t	2.5-29.8m	6.00					5.95																
	12t	2.5-16.2m	12.00	11.02	9.43	8.21	7.24	6.45	5.80															

Mechanisms

		Hoisting		QE1280E
	Slewing	HVV95F.130		
	0 ~ 0.7 r/min	2×95 N.m		
	Trolleying	BP55B		
	0 ~ 55 m/min	5.5 kW		
	Travelling	ZA52A-D ZC52A-D		
	25/12.5 m/min	2×5.2 kW		
 55/55 kW  480m Ⓞ (6 layers) Ⓞ Consult us If overtop	V	б	3t	80 m/min
		бб	6t	40 m/min
	IV	б	6t	40 m/min
		бб	12t	20 m/min
	380V(+10%–10%) 50Hz		71.5+2×5.2 kW	

For more mechanisms optional, consult us!