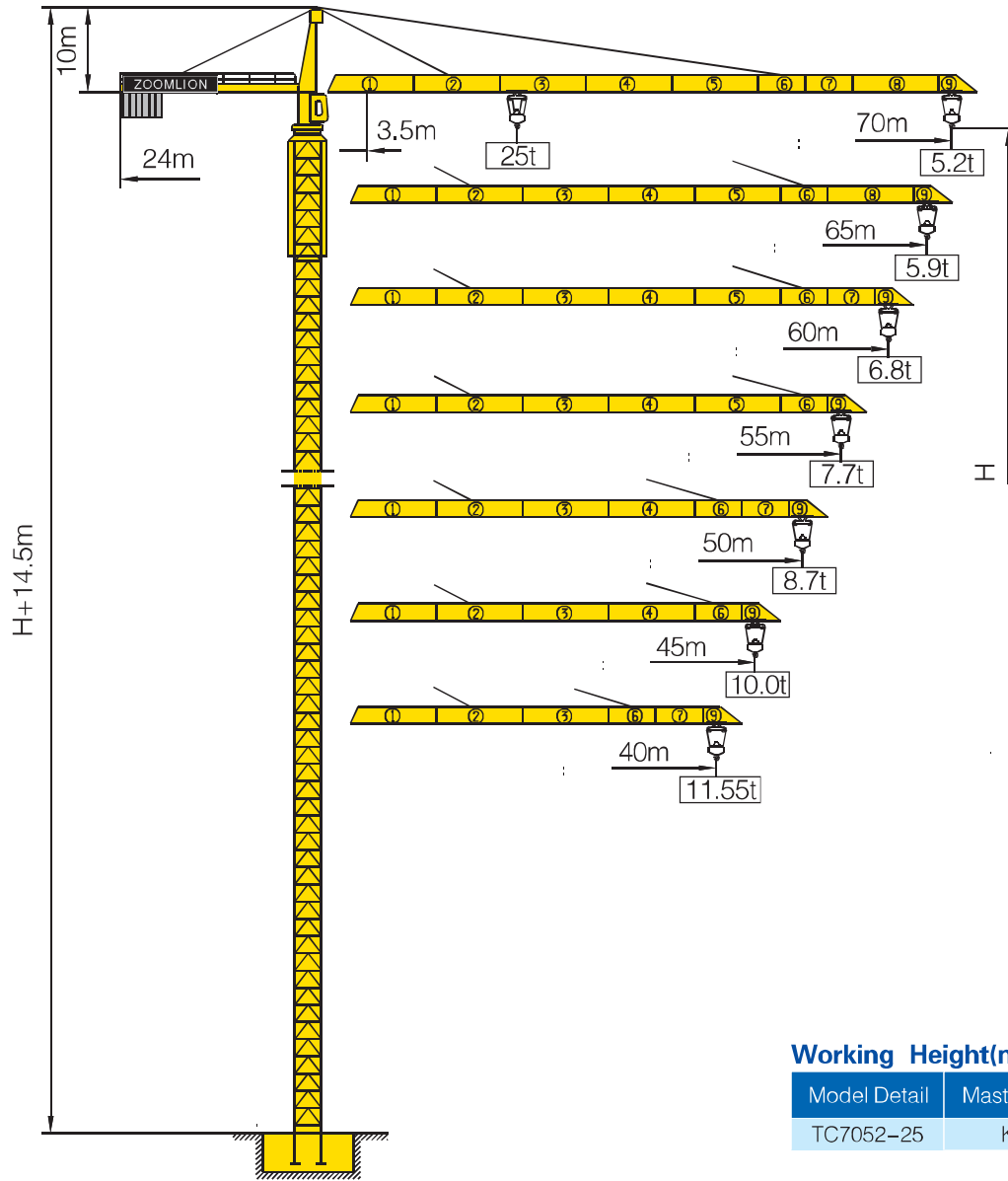


TC7052-25



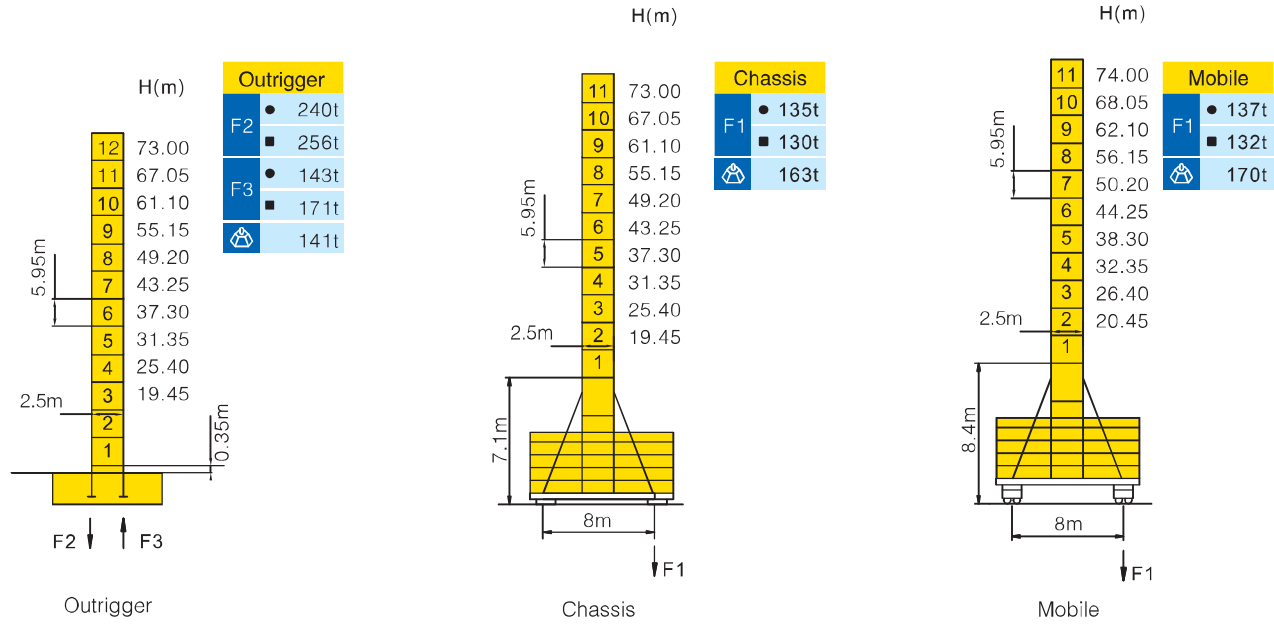
Counter-jib ballast

			(Kg)	PHZ5000	PHZ3500	PHZ3000	PHZ2500
70m	24m	29500		4	2	0	1
65m	24m	27000		4	2	0	0
60m	24m	26000		4	1	0	1
55m	24m	23500		4	1	0	0
50m	24m	20000		4	0	0	0
45m	24m	18000		3	0	1	0
40m	24m	15000		3	0	0	0

Working Height(m) @ Wall-tie Location(m)

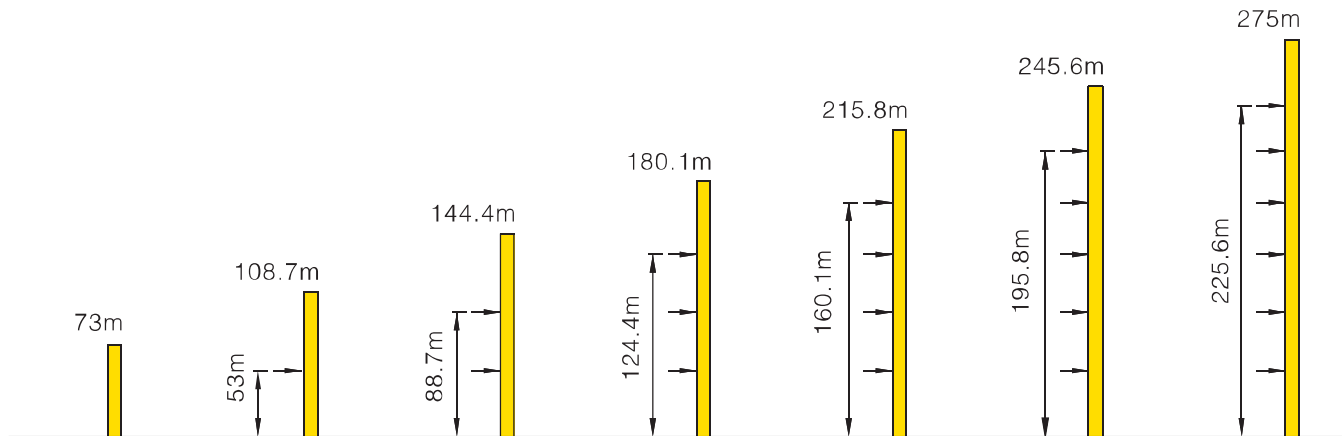
Model Detail	Mast Code	Wall-tie #1	Wall-tie #2	Wall-tie #3	Wall-tie #4	Wall-tie #5	Wall-tie #6
TC7052-25	K1	108.7 @ 53	144.4 @ 88.7	180.1 @ 124.4	215.8 @ 160.1	245.6 @ 195.8	275 @ 225.6

Masts Reactions




● Reactions in service ■ Reactions out of service
 ⚠ Without load and ballast with longest jib and maximum height
 Ⓢ For more erecting solutions, consult us!





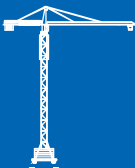

Anchorage



Load diagrams

		Max. Capacity m/t	20	25	30	35	38	40	43	45	48	50	53	55	58	60	63	65	68	70
70m (R=72.6)	⌋	3.5—33.7m 12.5t	12.5			11.97	10.89	10.26	9.43	8.94	8.28	7.88	7.35	7.03	6.58	6.31	5.94	5.71	5.40	5.20
	⌋⌋	3.5—17.52m 25t	21.41	16.42	13.16	10.86	9.78	9.15	8.32	7.83	7.17	6.77	6.24	5.92	5.47	5.20	4.83	4.60	4.29	4.09
65m (R=67.6)	⌋	3.5—34.55m 12.5t	12.5			11.21	10.56	9.71	9.21	8.53	8.13	7.58	7.25	6.79	6.52	6.13	5.90			
	⌋⌋	3.5—17.95m 25t	22.04	16.92	13.57	11.21	10.10	9.45	8.60	8.10	7.42	7.02	6.47	6.14	5.68	5.41	5.02	4.79		
60m (R=62.6)	⌋	3.5—35.8m 12.5t	12.5			11.66	10.99	10.11	9.59	8.89	8.47	7.90	7.56	7.09	6.80					
	⌋⌋	3.5—18.56m 25t	22.92	17.62	14.15	11.70	10.55	9.88	9.00	8.48	7.78	7.36	6.79	6.45	5.98	5.69				
55m (R=57.6)	⌋	3.5—36.3m 12.5t	12.5			11.87	11.19	10.29	9.76	9.05	8.63	8.05	7.70							
	⌋⌋	3.5—18.85m 25t	23.32	17.94	14.42	11.93	10.76	10.08	9.18	8.65	7.94	7.52	6.94	6.59						
50m (R=52.6)	⌋	3.5—36.58m 12.5t	12.5			11.97	11.28	10.38	9.85	9.13	8.70									
	⌋⌋	3.5—18.97m 25t	23.52	18.09	14.54	12.04	10.86	10.17	9.27	8.74	8.02	7.59								
45m (R=47.6)	⌋	3.5—37.1m 12.5t	12.5			12.15	11.46	10.54	10.0											
	⌋⌋	3.5—19.22m 25t	23.87	18.38	14.78	12.24	11.04	10.35	9.43	8.89										
40m (R=42.6)	⌋	3.5—37.3m 12.5t	12.5			12.25	11.55													
	⌋⌋	3.5—19.35m 25t	24.06	18.53	14.90	12.34	11.14	10.44												

Mechanisms

		Hoisting		QP2580A				
	Slewing	HP75F1.130×2 HP75F2.130×1		 63 kW	III	♭	12.5t	27 m/min
		0~0.72 r/min	3×7.5 kW			♭♭	25t	13.5 m/min
	Trolleying	BP110A		 550m ⓪ (5 layers)	IV	♭	6.25t	53 m/min
		0~100 m/min	11 kW			♭♭	12.5t	27 m/min
	Travelling	ZAK52-B ZBK52-B		⓪ Consult us if overtop	V	♭	1t	80 m/min
		0~25 m/min	6×5.2 kW			♭♭	2t	40 m/min
		380V(+10%~10%) 50Hz			96.5+6×5.2 kW			