

2

18 TON CRANE

TEREX CD 118

rough terrain crane
18 ton capacity

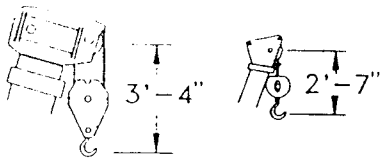
range diagram & lifting capacities

REDUCTION IN MAIN BOOM CAPACITY

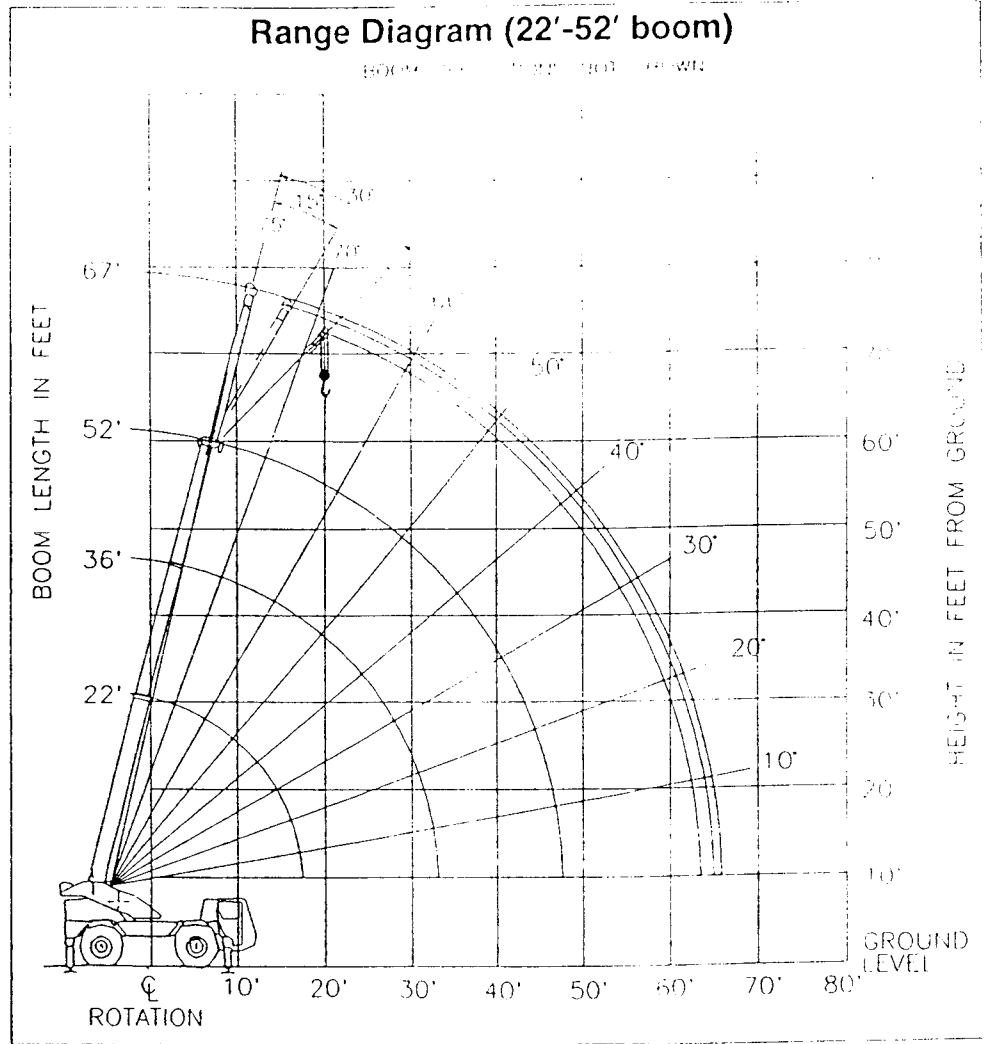
All Jibs in Stowed Position	0 Lbs.
15' Jib Erected	500 Lbs.

HOOK BLOCK WEIGHTS

Hook & Ball	121 Lbs.
Hook Block (2 Sheave)	325 Lbs.
Hook Block (3 Sheave)	350 Lbs.



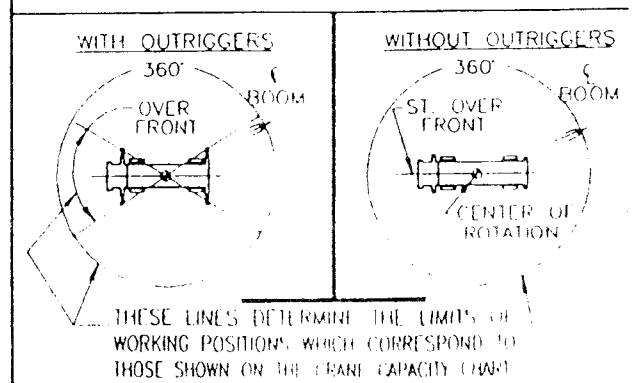
Dimensions are for largest factory furnished hook block and hook & ball, with anti-two block activated.



CD 118 TURNING CIRCLES

	2-Wheel Steer	4-Wheel Steer
Turning Radius	22' 4"	14' 10.5"
Curb Clearance Circle (Over 15.00 x 22.5 Tires)	45' 11.5"	31' 0.5"
Machine Clearance Circle (Over Boom Head)	49' 0"	34' 2"
(Over Stowed Jib)	50' 7"	35' 9"

CRANE WORKING POSITIONS



Lifting Capacities — Pounds

(22'-52' boom)

18700 CD

MODEL CD 118

CONCRETE WEIGHT	1,000 LBS	STABILITY PERCENTAGE	
BOOM LENGTH	22, 36 FT	ON OUTRIGGERS	85%
OUTRIGGER CAPACITY	10,000 LBS	ON TILES	75%
		WIND SPEED	5 MPH

CAUTION: Do not use this specification sheet as a load rating chart. The format of data is not consistent with the machine chart and may be subject to change.

ON OUTRIGGERS

LOAD RADIUS (FT)	BOOM LENGTH 22 FT			BOOM LENGTH 36 FT			BOOM LENGTH 52 FT			LOAD RADIUS (FT)
	LOADED BOOM ANGLE (DEG)	OVER FRONT (LB)	360° (LB)	LOADED BOOM ANGLE (DEG)	OVER FRONT (LB)	360° (LB)	LOADED BOOM ANGLE (DEG)	OVER FRONT (LB)	360° (LB)	
5	75.0	36,000*	36,000*							5
6	64.5	30,000*	30,000*							6
8	58.4	28,400*	28,400*	71.3	26,500*	26,500*				8
10	51.9	23,100*	23,100*	67.9	23,200*	22,900*				10
12	44.6	18,800*	18,800*	64.4	19,200*	18,700*				12
15	31.0	14,500*	14,500*	58.8	14,900*	14,500*	69.0	15,000*	14,700*	15
18				52.9	12,000*	11,700*	65.4	12,100*	11,800*	18
20				48.7	10,500*	10,200*	62.9	10,700*	10,400*	20
25				36.4	7,900*	7,400	56.4	8,000*	7,600	25
30				17.5	6,100*	5,400	49.4	6,300*	5,600	30
35							41.4	5,000	4,200	35
40							31.8	3,900	3,300	40
45							17.9	3,100	2,600	45
50										50

** MAXIMUM CAPACITY AT 0 DEGREE BOOM ANGLE

BOOM LENGTH 22 FT			BOOM LENGTH 36 FT			BOOM LENGTH 52 FT		
LOAD RADIUS (FT)	OVER FRONT (LB)	360° (LB)	LOAD RADIUS (FT)	OVER FRONT (LB)	360° (LB)	LOAD RADIUS (FT)	OVER FRONT (LB)	360° (LB)
17.5	8,500*	8,500*	31.3	4,500*	4,500*	47.1	2,500*	2,300

ON TIRES

RADIUS (FT)	MAX BOOM LENGTH (FT)	15.00 X 22.5-16PR				RADIUS (FT)
		STATIONARY		PICK & CARRY		
		360°	STRAIGHT OVER FRONT	CREEP	2.5 MPH	
6	22	15,500*				6
8	22	13,300*				8
10	22	10,300*	15,500*	12,300*	10,100*	10
12	36	8,300*	13,300*	10,500*	8,600*	12
15	36	6,300*	9,900	8,500*	6,900*	15
18	52	4,900	7,300	7,000*	5,600*	18
20	52	4,000	6,200	6,200*	5,000*	20
25	52	2,700	4,300	4,300*	3,800*	25
30	52	2,000	3,100	3,100*	2,900*	30
35	52	1,400	2,400	2,400*	2,300*	35
40	52	1,000	1,800	1,800*	1,800	40
45	52	700	1,400	1,400*	1,400	45

Note: For On Tires Capacities:

- A. For Pick and Carry Operations, boom must be extended to the end of the machine.
- B. The load should be restrained from swinging.
- C. Creep speed is crane movement of less than 10 mph (16 km/h) (excluding 1.0 mph (1.6 km/h)).
- D. Refer to general Notes for additional information.
- E. Without outriggers, never increases the boom length beyond the maximum applicable boom used to maintain stability.

SIDE STOW JIB ON OUTRIGGERS

LOADED BOOM ANGLE (DEG)	LOAD RADIUS (REF) (FT)	15 FT OFFSETTABLE JIB						LOADED BOOM ANGLE (DEG)
		0° OFFSET		15° OFFSET		30° OFFSET		
		360° (LB)	LOAD RADIUS (REF) (FT)	360° (LB)	LOAD RADIUS (REF) (FT)	360° (LB)	LOAD RADIUS (REF) (FT)	
75	16'-2"	5,500*	18'-4"	4,100*	21'-1"	3,400*	75	
73	18'-9"	5,500*	21'-1"	4,000*	23'-8"	3,400*	73	
71	21'-2"	5,400*	23'-9"	3,800*	26'-1"	3,200*	71	
68	24'-8"	5,400*	27'-5"	3,600*	29'-7"	3,100*	68	
65	27'-11"	5,000*	30'-10"	3,500*	32'-10"	3,000*	65	
62	31'-1"	4,700*	34'-0"	3,300*	35'-11"	2,900*	62	
59	34'-1"	4,400*	37'-0"	3,200*	38'-9"	2,800*	59	
55	37'-10"	4,000*	40'-4"	3,100*	41'-10"	2,700*	55	
51	41'-5"	3,500	43'-5"	3,100*	44'-10"	2,600*	51	
47	44'-6"	3,000	46'-5"	2,500*	47'-10"	2,600*	47	
43	47'-5"	2,700	49'-1"	2,500	50'-5"	2,500	43	
38	51'-0"	2,300	52'-3"	2,200*	53'-5"	2,400*	38	
32	54'-4"	2,200*	56'-0"	1,900	56'-4"	1,900	32	
25	57'-8"	1,800	59'-0"	1,700			25	
17	61'-1"	1,500	61'-3"	1,500			17	
0	63'-3"	1,400					0	

Notes: For Jib Capacities:

- 1. For all boom lengths, less than the maximum with a jib erected, the rated capacity is shown in the appropriate column.
- 2. For boom angles not shown, use the capacity of the next lower boom length.
- 3. Listed radius are for fully extended main boom only.

RECOMMENDED TIRE PRESSURE

TIRE SIZE	STATIONARY	CREEP	2.5 MPH	TRAVEL
15.00 X 22.5-16PR	110 PSI	110 PSI	110 PSI	90 PSI

MAXIMUM PERMISSIBLE HOIST LINE LOAD

WIRE ROPE	1	2	3	4	5
6X19 OR 6X37 HOPE	6,000	12,000	18,000	24,000	30,000
8X19 OR 8X37 HOPE	8,000	16,000	24,000	32,000	40,000
BOOM HEAD	1	1.1	1.2	1.4	1.6
HOOK BLOCK	1	1	1.1	1.2	1.4