

"Bringing Innovation to Construction"



This versatile unit is setting the global standard in self erecting tower cranes. Some of the key features are:

- Jib 91' 10", clearance under hook 66' 3"
- Capacity at inner limit 6,615 lbs
- Capacity at outer limit is 2,315 lbs
- Power lift offers up to 20% more capacity when needed
- Can be luffed to 30°
- No concrete base is required
- Footprint is only 13' x 13'
- Galvanized structure
- Site or generator powered
- Radio remote control
- Full set up in less than one day

Full details can be found at our website or by calling our toll free number. Dealer inquires welcome

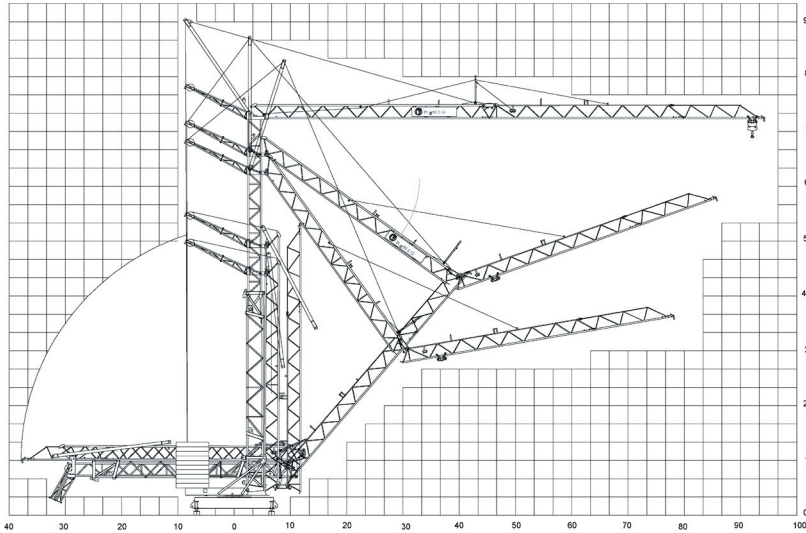
Koenig Cranes North America

2190 A-Carpenter Street
P.O. Box 2304, Abbotsford
BC Canada V2T 4X2

Tel 604-852-2192
Fax 604-852-4421
Email info@koenigcranes.com

K28-S Technical Data

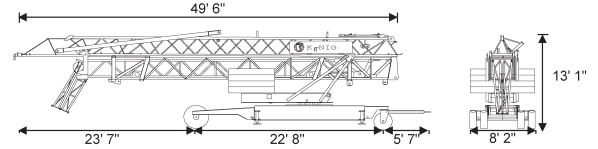
Erection



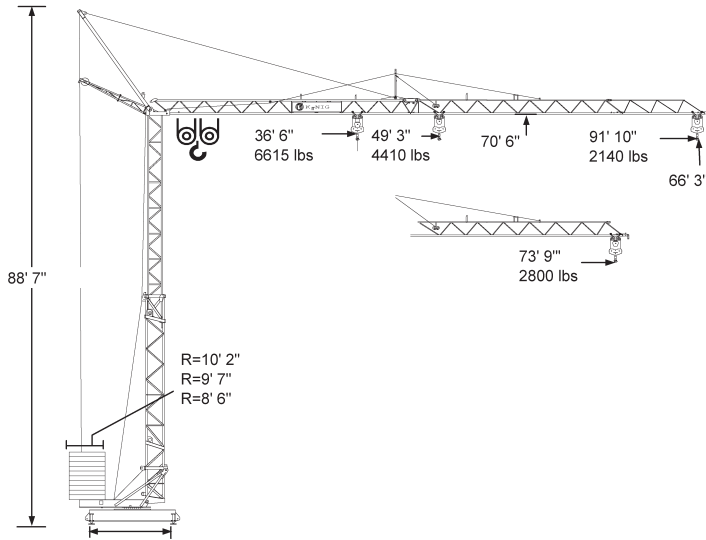
Weight

Central ballast weight	7.5 T	Transport weight approx.	20.6 T	
Counterweight	R=10' 2"	8.5 T	Dead weight approx.	11.4 T
	R=9' 7"	9.9 T		
	R=8' 6"	11.2 T		

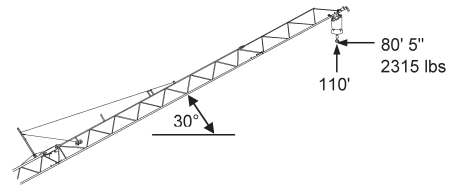
Transportation by Road



Rigging



Luffing



Radius and Capacity

Radius		max capacity		ft x lbs											
ft	0°	T	ft	33	39	46	52	59	66	72	79	82	85	89	92
92	↕	2.0	16.0	4410	4410	4410	4410	3946	3483	3108	2800	2668	2535	2425	2315
79	↕	2.0	17.0	4410	4410	4410	4410	4211	3704	3307	2975				
30°	↕	Radius (ft)		29	35	40	46	52	57	63	69	72	74	77	80
30°	↕	Hook Height (ft)		80	84	87	90	94	97	100	103	105	107	108	110

Radius		max capacity		ft x lbs											
ft	0°	T	ft	33	39	46	52	59	66	72	79	82	85	89	92
92	↕	2.0	15.0	4410	4410	4410	4365	3770	3329	2954	2668	2535	2425	2315	2205
	↕	3.0	11.0	6614	6217	5137	4343	3748	3285	2910	2601	2469	2359	2249	2140
79	↕	2.0	16.0	4410	4410	4410	4410	4056	3571	3175	2865				
	↕	3.0	12.0	6614	6614	5467	4630	4012	3527	3131	2800				

Reactions

	In service	Out of service
Reactions	15.5 T	13 T

Speeds

	Step	ft/min.	lbs	kW
	1	20 - 10	4410 - 6614	3.5
	2	78 - 39	4410 - 6614	9
	3	157-78	2425 - 4850	11
	1	85		1.1
	2	131		1.5
	0 - 1	U/min. sl./min. tr./min.		2.2

Cross section of cable up to 5x10° Operation voltage 400 V Frequency 50 Hz Power requirement 23.2 kVA (14.7 kW)