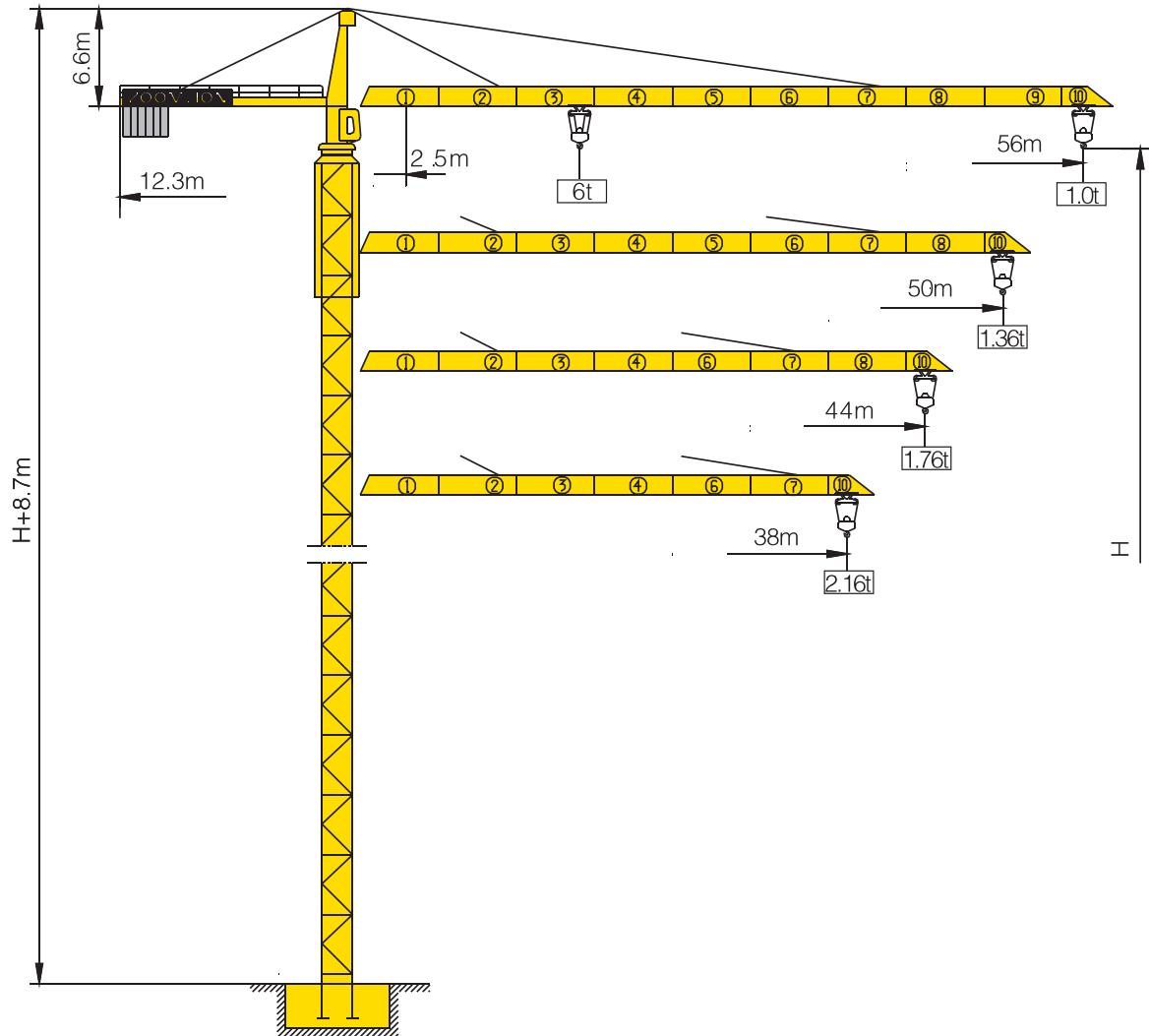


TC5610-6



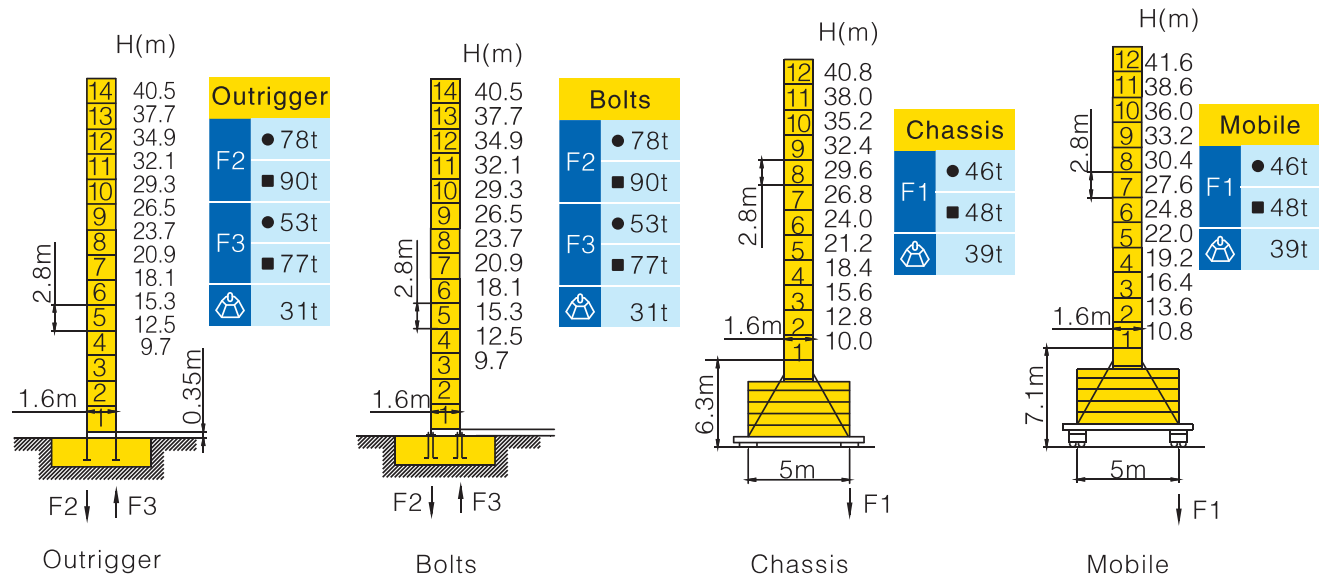
Counter-jib ballast

		 (Kg)	PHZ2900	PHZ1500
56m	12.3m	14600	4	2
50m	12.3m	13100	4	1
44m	12.3m	11600	4	0
38m	12.3m	10200	3	1

Working Height(m) @ Wall-tie Location(m)

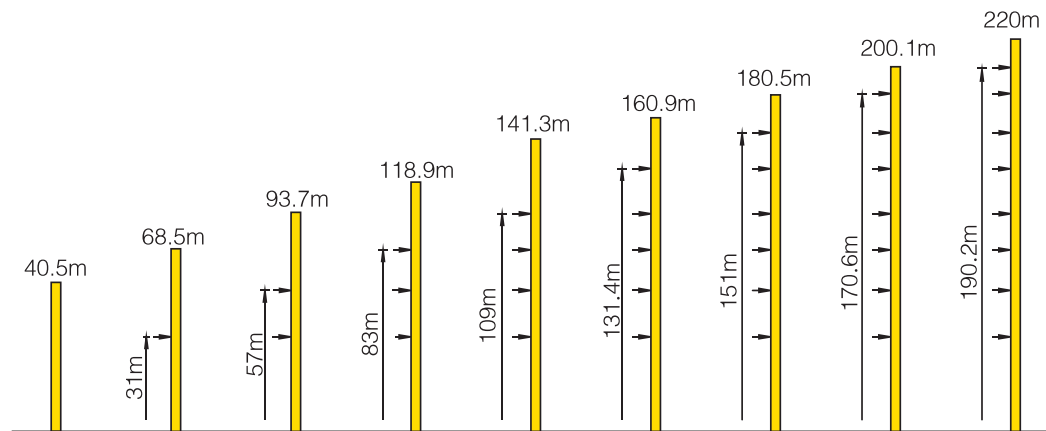
Model Detail	Mast Code	Wall-tie #1	Wall-tie #2	Wall-tie #3	Wall-tie #4	Wall-tie #5	Wall-tie #6	Wall-tie #7	Wall-tie #8
TC5610-6	E2	68.5 @ 31	93.7 @ 57	118.9 @ 83	141.3 @ 109	160.9 @ 131.4	180.5 @ 151	200.1 @ 170.6	220 @ 190.2

Masts Reactions



● Reactions in service ■ Reactions out of service
 ⊕ Without load and ballast with longest jib and maximum height
 ⊕ For more erecting solutions, consult us!


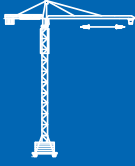




Anchorage



Load diagrams

		Max.Capacity m/t	17.0	20.0	23.0	26.0	29.0	32.0	35.0	38.0	41.0	44.0	47.0	50.0	53.0	56.0
56m (R=57.2)	⌋	2.5–24.9m 3t	3.00			2.85	2.49	2.20	1.96	1.75	1.58	1.43	1.30	1.19	1.09	1.00
	⌋⌋	2.5–13.7m 6t	4.68	3.85	3.25	2.79	2.43	2.14	1.90	1.69	1.52	1.37	1.24	1.13	1.03	0.94
50m (R=51.2)	⌋	2.5–27.3m 3t	3.00			2.79	2.47	2.20	1.98	1.79	1.63	1.48	1.36			
	⌋⌋	2.5–15.0m 6t	5.19	4.29	3.63	3.12	2.73	2.41	2.14	1.92	1.73	1.57	1.42	1.30		
44m (R=45.2)	⌋	2.5–28.9m 3t	3.00			2.99	2.65	2.37	2.13	1.93	1.76					
	⌋⌋	2.5–15.9m 6t	5.55	4.59	3.89	3.35	2.93	2.59	2.31	2.06	1.87	1.70				
38m (R=39.2)	⌋	2.5–29.2m 3t	3.00					2.68	2.40	2.16						
	⌋⌋	2.5–16.0m 6t	5.61	4.64	3.93	3.39	2.97	2.62	2.34	2.10						

Mechanisms

			Hoisting		QS680D
	Slewing		HR75.130		
	0~0.65 r/min	7.5 kW	I	♩	3t 8.88 m/min
	Trolleying		BE33E		
	50/25 m/min	3.3/2.2 kW	II	♩♩	6t 4.44 m/min
	Travelling		ZA52-D ZC52-D		
	0~25 m/min	2×5.2 kW	III	♩	1.5t 80 m/min
			 5.4/24/24kW		
			 440m⊙ (6 layers)		
			⊙ Consult us If overtop		
			♩♩		3t 40 m/min
			380V(+10%~10%) 50Hz		342.8+2×5.2 kW

For more mechanisms optional, consult us!