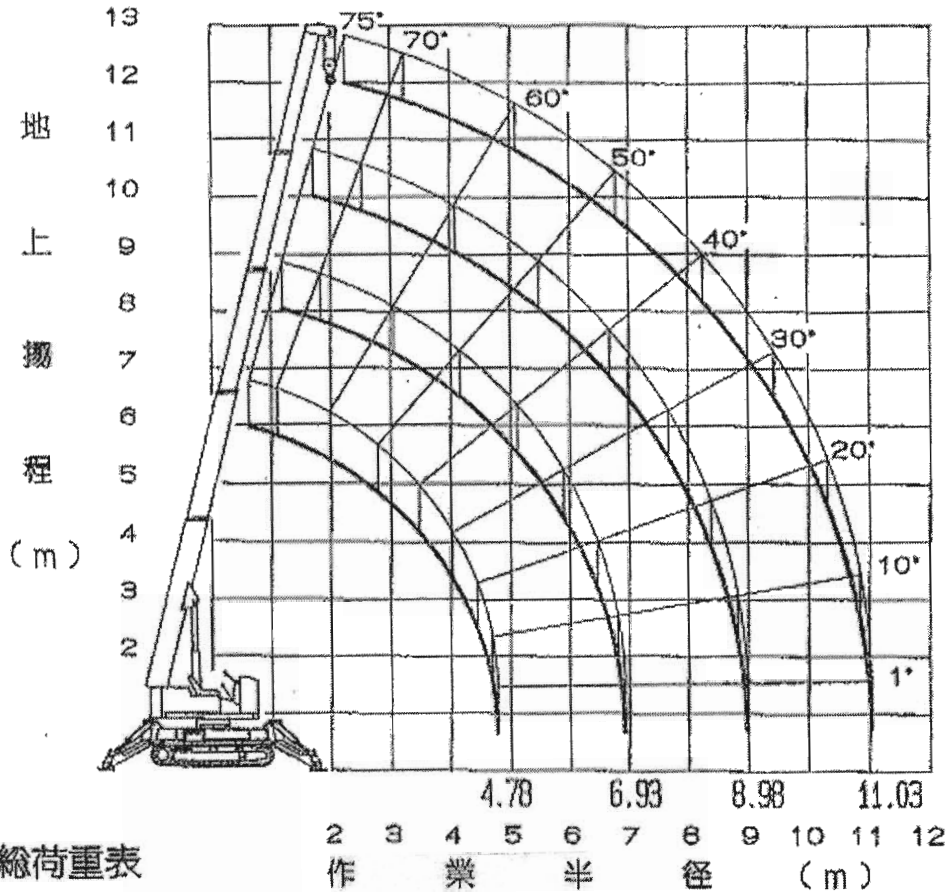


# TC335S形トーマミニクレーン

## 作業範囲図



## 定格総荷重表

フームA及びAB使用時

### LOAD CHART RATE

#### Boom A & AB Working Radius

Working Radius (m)	2.0	2.5	3.0	3.5	4.0	4.5	4.78
Rated Load (ton)	2.98	2.45	2.0	1.64	1.36	1.11	1.0

#### Boom A, B, C (Please follow belows chart when extend Boom "C" any length)

Working Radius (m)	2.5	3.0	3.5	4.0	4.5	5.0	5.5	6.0	6.5	6.93
Rated Load (ton)	2.3	2.0	1.6	1.36	1.11	0.92	0.75	0.65	0.56	0.5

#### Boom A, B, C, D (Please follow belows chart when extend Boom "D" any length)

Working Radius (m)	3.0	4.0	5.0	6.0	7.0	8.0	8.98
Rated Load (ton)	1.0	1.0	0.8	0.65	0.49	0.39	0.32

#### Boom A, B, C (Please follow belows chart when extend Boom "E" any length)

Working Radius (m)	3.0	4.0	5.0	6.0	7.0	8.0	9.0	10.0	11
Rated Load (ton)	0.6	0.6	0.5	0.4	0.32	0.3	0.25	0.22	0.19

This chart include the weight of Hook 25kg.