



AMERICAN HC 125

Hydraulic Crawler Crane

LIFT RATINGS IN POUNDS

With 59H Open Throat Boom, 24' Floating Mast and 51,000 Pound Counterweight Fully Retracted

Boom & Mast Length	Radius Feet	Boom Angle Degrees	Side Frames Retracted Pounds	Side Frames Extended Pounds	From Boom Pt. to Ground Feet
50' Boom	12	81.0	250,000*	250,000*	56
	15	77.5	180,380	220,000*	55
	20	71.5	113,920	147,800	54
	25	65.3	82,690	103,810	52
	30	58.8	64,520	79,600	49
	35	51.7	52,680	64,230	46
	40	43.9	44,310	53,680	41
50	22.3	33,220	39,950	25	
60' Boom	14	80.6	204,080	220,000*	66
	15	79.6	180,490	220,000*	66
	20	74.7	113,950	147,890	65
	25	69.6	82,680	103,850	63
	30	64.4	64,480	79,610	61
	35	59.0	52,660	64,220	58
	40	53.2	44,270	53,680	54
50	39.8	33,220	39,970	45	
60	20.3	26,250	31,480	27	
70' Boom	16	80.3	161,850	206,570*	76
	20	76.9	113,970	147,960	75
	25	72.7	82,690	103,880	73
	30	68.3	64,460	79,620	72
	35	63.8	52,650	64,220	69
	40	59.1	44,250	53,680	67
	50	48.9	33,210	39,980	59
60	36.7	26,300	31,500	48	
70	18.8	21,470	25,760	29	
80' Boom	17	80.8	146,560	194,360*	86
	20	78.6	113,890	147,940	85
	25	74.9	82,570	103,800	84
	30	71.1	64,320	79,520	82
	35	67.3	52,500	64,100	80
	40	63.3	44,090	53,550	78
	50	54.9	33,040	39,830	72
60	45.5	26,150	31,350	63	
70	34.2	21,350	25,660	51	
80	17.5	17,820	21,450	30	
90' Boom	19	80.5	122,960	161,540	95
	20	79.9	113,850	147,910	95
	25	76.6	82,530	103,770	94
	30	73.3	64,260	79,480	93
	35	69.9	52,450	64,050	91
	40	66.5	44,040	53,510	89
	50	59.3	32,990	39,790	84
60	51.5	26,120	31,310	77	
70	42.8	21,320	25,630	67	
80	32.2	17,820	21,450	54	
90	16.5	15,130	18,270	32	
100' Boom	20	80.9	113,740	147,850	105
	25	78.0	82,380	103,660	104
	30	75.0	64,090	79,350	103
	35	72.0	52,270	63,880	102
	40	69.0	43,860	53,350	100
	50	62.7	32,770	39,590	95
	60	56.0	25,920	31,110	89
70	48.7	21,130	25,450	81	
80	40.5	17,630	21,270	71	
90	30.5	14,960	18,110	57	
100	15.6	12,830	15,600	33	

Boom & Mast Length	Radius Feet	Boom Angle Degrees	Side Frames Retracted Pounds	Side Frames Extended Pounds	From Boom Pt. to Ground Feet
110' Boom	22	80.7	98,620	126,330	115
	25	79.1	82,230	103,530	115
	30	76.4	63,930	79,210	114
	35	73.7	52,110	63,730	112
	40	71.0	43,690	53,200	111
	50	65.3	32,610	39,440	107
	60	59.4	25,770	30,950	101
	70	53.2	20,980	25,310	94
	80	46.3	17,480	21,130	86
	90	38.5	14,800	17,960	75
	100	29.0	12,700	15,470	60
110	14.8	10,990	13,470	34	
120' Boom	23	81.0	92,290	117,560	125
	25	80.0	82,080	103,400	125
	30	77.6	63,740	79,050	124
	35	75.1	51,930	63,550	123
	40	72.6	43,490	53,020	121
	50	67.5	32,380	39,230	117
	60	62.2	25,550	30,720	113
	70	56.7	20,750	25,090	107
	80	50.7	17,250	20,910	99
	90	44.2	14,580	17,740	90
	100	36.8	12,480	15,260	78
	110	27.8	10,780	13,260	62
120	14.2	9,370	11,610	36	
130' Boom	25	80.8	81,910	103,250	135
	30	78.5	63,580	78,910	134
	35	76.3	51,770	63,390	133
	40	74.0	43,330	52,870	132
	50	69.3	32,230	39,080	128
	60	64.5	25,400	30,570	124
	70	59.5	20,610	24,950	119
	80	54.2	17,110	20,770	112
	90	48.6	14,440	17,600	104
	100	42.4	12,350	15,130	94
	110	35.3	10,640	13,130	81
	120	26.6	9,250	11,490	65
	130	13.6	8,070	10,110	37
140' Boom	27	80.6	73,350	91,760	145
	30	79.4	63,380	78,740	144
	35	77.3	51,580	63,210	143
	40	75.2	43,120	52,680	142
	50	70.9	32,000	38,870	139
	60	66.5	25,190	30,340	135
	70	61.9	20,370	24,730	130
	80	57.2	16,870	20,540	124
	90	52.1	14,200	17,370	117
	100	46.7	12,110	14,900	108
	110	40.8	10,410	12,900	98
	120	34.0	9,010	11,260	84
	130	25.6	7,830	9,880	67
	140	13.1	6,840	8,720	38
150' Boom	28	80.8	69,530	86,950	155
	30	80.1	63,180	78,570	154
	35	78.1	51,380	63,010	153
	40	76.2	42,920	52,490	152
	50	72.2	31,790	38,670	149
	60	68.1	24,980	30,140	146

Boom & Mast Length	Radius Feet	Boom Angle Degrees	Side Frames Retracted Pounds	Side Frames Extended Pounds	From Boom Pt. to Ground Feet
150' Boom (cont.)	70	63.9	20,180	24,540	141
	80	59.6	16,670	20,350	136
	90	55.0	14,000	17,180	129
	100	50.2	11,900	14,700	122
	110	45.0	10,200	12,700	112
	120	39.3	8,810	11,060	101
	130	32.8	7,640	9,690	87
140	24.8	6,630	8,520	69	
150	12.7	5,770	7,520	39	
160' Boom	30	80.7	62,990	78,410	165
	35	78.9	51,180	62,830	164
	40	77.1	42,700	52,300	163
	50	73.3	31,560	38,450	160
	60	69.6	24,760	29,910	157
	70	65.7	19,940	24,310	152
	80	61.7	16,430	20,120	147
	90	57.5	13,760	16,940	141
	100	53.2	11,650	14,460	134
	110	48.5	9,950	12,450	126
	120	43.5	8,550	10,810	116
130	38.0	7,380	9,440	105	
140	31.7	6,380	8,270	90	
150	24.0	5,530	7,280	71	
160	12.3	4,780	6,400	40	
170' Boom	31	80.9	59,980	73,340*	175
	35	79.6	50,980	62,630	174
	40	77.8	42,500	52,110	173
	50	74.3	31,360	38,260	170
	60	70.8	24,570	29,710	167
	70	67.2	19,760	24,130	163
	80	63.5	16,240	19,930	159
	90	59.6	13,570	16,760	153
	100	55.6	11,470	14,270	147
	110	51.4	9,770	12,270	139
	120	47.0	8,370	10,630	131
	130	42.1	7,200	9,260	120
	140	36.8	6,210	8,100	108
	150	30.7	5,350	7,100	93
160	23.2	4,610	6,240	73	
170	11.9	3,960	5,470	41	
180' Boom	33	80.8	55,060	64,040*	184
	35	80.1	50,780	62,430	184
	40	78.5	42,290	51,920	183
	50	75.2	31,120	38,040	181
	60	71.9	24,350	29,480	178
	70	68.5	19,520	23,900	174
	80	65.1	16,010	19,700	170
	90	61.5	13,330	16,530	165
	100	57.8	11,220	14,030	159
	110	53.9	9,520	12,030	152
	120	49.9	8,110	10,380	144
130	45.6	6,950	9,010	135	
140	40.9	5,940	7,840	124	
150	35.7	5,090	6,840	111	
160	29.8	4,340	5,970	96	
170	22.5	3,690	5,220	75	
180	11.5	3,130	4,560	42	

(Continued)

LIFT RATINGS IN POUNDS (continued)

With 59H Open Throat Boom, 24' Floating Mast and 51,000 Pound Counterweight Fully Retracted

Boom & Mast Length	Radius Feet	Boom Angle Degrees	Side Frames Retracted Pounds	Side Frames Extended Pounds	From Boom Pt. to Ground Feet
190' Boom	34	81.0	52,630	55,980*	194
	35	80.7	50,570	55,700*	194
	40	79.1	42,070	51,710	193
	50	76.0	30,900	37,820	191
	60	72.9	24,130	29,260	188
	70	69.7	19,310	23,700	185
	80	66.5	15,780	19,480	181
	90	63.1	13,100	16,300	176
	100	59.7	11,000	13,810	170
	110	56.1	9,300	11,810	164
	120	52.4	7,900	10,170	157
	130	48.5	6,720	8,790	149
	140	44.3	5,720	7,620	139
	150	39.8	4,870	6,620	128
	160	34.8	4,120	5,760	115
	170	29.0	3,470	4,990	98
180	21.9	2,900	4,330	77	
190	11.2	2,390	3,740	43	
200' Boom	36	80.8	48,430	49,280*	204
	40	79.7	41,860	48,570*	203
	50	76.7	30,660	37,610	201
	60	73.8	23,900	29,020	199
	70	70.8	19,060	23,460	195
	80	67.7	15,540	19,250	192
	90	64.6	12,850	16,060	187
	100	61.3	10,740	13,570	182
	110	58.0	9,040	11,560	176
	120	54.6	7,640	9,910	169
	130	51.0	6,460	8,530	162
	140	47.2	5,460	7,360	153
	150	43.1	4,610	6,370	143
	160	38.7	3,850	5,490	131
	170	33.8	3,200	4,730	118
	180	28.3	2,630	4,070	101
190	21.4	2,120	3,480	79	
200	10.9	1,670	2,950	44	
210' Boom	38	80.7	43,610*	43,610*	214
	40	80.2	41,640	43,270*	214
	50	77.4	30,440	37,390	212
	60	74.6	23,690	29,090	209
	70	71.7	18,860	23,260	206
	80	68.8	15,330	19,050	202
	90	65.9	12,650	15,860	198
	100	62.8	10,530	13,360	193
	110	59.7	8,830	11,350	188
	120	56.5	7,430	9,710	182
	130	53.1	6,250	8,330	174
	140	49.6	5,250	7,160	166
	150	46.0	4,400	6,160	157
	160	42.0	3,650	5,290	147
	170	37.7	3,000	4,530	135
	180	33.0	2,430	3,860	121
190	27.5	1,910	3,260	103	
200	20.8	1,460	2,740	81	
210	10.7	1,070	2,280	45	
220' Boom	39	80.9	38,720*	38,720*	224
	40	80.6	38,510*	38,510*	224
	50	78.0	30,210	35,940*	222
	60	75.3	23,460	28,880	219
	70	72.6	18,620	23,030	217
	80	69.8	15,090	18,820	213
	90	67.0	12,400	15,620	209
	100	64.2	10,290	13,120	205
	110	61.2	8,590	11,110	199
	120	58.2	7,170	9,450	193
	130	55.1	5,990	8,070	187
	140	51.8	4,990	6,900	179
	150	48.4	4,140	5,910	171
	160	44.8	3,390	5,030	161
	170	41.0	2,740	4,280	151
	180	36.8	2,160	3,600	138
190	32.2	1,640	3,000	124	
200	26.9	1,190	2,470	106	
210	20.4	-	2,000	83	
220	10.4	-	1,580	46	
230' Boom	41	80.8	34,060*	34,060*	234
	50	78.5	29,970	32,230*	232
	60	75.9	23,230	28,650	230
	70	73.4	18,400	22,820	227
	80	70.7	14,860	18,590	224
	90	68.1	12,170	15,400	220
	100	65.4	10,050	12,890	216
	110	62.6	8,350	10,880	211
	120	59.7	6,940	9,230	205
	130	56.8	5,770	7,850	199
	140	53.8	4,760	6,680	192
	150	50.6	3,900	5,670	184
	160	47.3	3,150	4,800	175
	170	43.8	2,490	4,030	165
	180	40.0	1,920	3,360	154
	190	36.0	1,410	2,770	141
200	31.5	-	2,230	126	
210	26.3	-	1,760	108	
220	19.9	-	1,330	84	
240' Boom	42	80.9	29,830*	29,830*	244
	50	79.0	27,070*	27,070*	242
	60	76.5	23,010	25,030*	240
	70	74.1	18,150	22,350*	237
	80	71.6	14,620	18,360	234
	90	69.0	11,920	15,150	231
	100	66.4	9,810	12,650	227
	110	63.8	8,090	10,630	222
	120	61.1	6,680	8,970	217
	130	58.3	5,500	7,590	211
	140	55.5	4,500	6,420	204
	150	52.5	3,640	5,410	197
	160	49.5	2,890	4,540	189
	170	46.2	2,230	3,770	180
	180	42.8	1,660	3,100	169
	190	39.2	1,140	2,510	158
200	35.2	-	1,960	145	
210	30.8	-	1,490	129	
220	25.7	-	1,060	110	

LIFT RATINGS IN KILOGRAMS

With 59H Open Throat Boom, 7.3M Floating Mast and 23,134 Kg Counterweight Fully Retracted

Boom & Mast Length	Radius Meters	Boom Angle Degrees	Side Frames Retracted Kilograms	Side Frames Extended Kilograms	From Boom Pt. to Ground Meters
15.2 M Boom	3.7	81.0	113,400*	113,400*	17
	4.0	79.7	100,000*	100,000*	17
	4.5	77.8	84,120	100,000*	17
	5.0	75.8	70,380	91,510*	17
	5.5	73.8	60,440	80,170	17
	6.0	71.9	52,910	68,860	17
	7.0	67.8	42,230	53,610	16
	8.0	63.7	35,070	43,790	16
	9.0	59.4	29,890	36,930	15
	10.0	54.9	26,020	31,850	14
	11.0	50.1	22,960	27,950	14
	12.0	44.9	20,510	24,870	13
	13.0	39.2	18,500	22,360	12
	14.0	32.7	16,820	20,270	10
	15.0	24.7	15,380	18,500	8
	18.3 M Boom	4.3	80.6	92,570	100,093*
4.5		79.8	84,170	100,000*	20
5.0		78.2	70,410	91,470*	20
5.5		76.6	60,460	80,210	20
6.0		75.0	52,930	68,910	20
7.0		71.7	42,230	53,630	19
8.0		68.4	35,060	43,790	19
9.0		64.9	29,880	36,940	19
10.0		61.4	26,000	31,850	18
11.0		57.7	22,940	27,940	17
12.0		53.9	20,500	24,870	17
13.0		49.9	18,480	22,350	16
14.0		45.6	16,800	20,260	15
15.0		41.0	15,380	18,510	14
16.0		35.9	14,150	17,010	13
17.0		30.0	13,100	15,710	11
18.0	22.8	12,160	14,580	9	
21.3 M Boom	4.9	80.3	73,410	93,700*	23
	5.0	79.9	70,440	91,420*	23
	5.5	78.6	60,470	80,250	23
	6.0	77.2	52,950	68,940	23
	7.0	74.4	42,230	53,650	23
	8.0	71.6	35,060	43,800	22
	9.0	68.7	29,870	36,950	22
	10.0	65.8	26,000	31,850	21
	11.0	62.8	22,940	27,940	21
	12.0	59.7	20,490	24,870	20
	13.0	56.5	18,470	22,350	20
	14.0	53.2	16,800	20,270	19
	15.0	49.8	15,370	18,510	18
	16.0	46.1	14,140	17,010	17
	17.0	42.2	13,110	15,720	16
	18.0	38.0	12,180	14,580	15
19.0	33.4	11,350	13,590	14	
20.0	28.0	10,620	12,730	12	

(Continued)

LIFT RATINGS IN KILOGRAMS (continued)

With 59H Open Throat Boom, 7.3M Floating Mast and 23,134 Kg Counterweight Fully Retracted

Boom & Mast Length	Radius Meters	Boom Angle Degrees	Side Frames Retracted Kilograms	Side Frames Extended Kilograms	From Boom Pt. to Ground Meters
24.4 M Boom	5.2	80.8	66,480	88,160*	26
	5.5	80.0	60,450	80,250	26
	6.0	78.8	52,910	68,930	26
	7.0	76.4	42,180	53,620	26
	8.0	74.0	35,000	43,770	25
	9.0	71.5	29,810	36,900	25
	10.0	69.0	25,930	31,800	25
	11.0	66.4	22,880	27,880	24
	12.0	63.8	20,420	24,820	24
	13.0	61.2	18,400	22,290	23
	14.0	58.5	16,720	20,200	23
	15.0	55.6	15,290	18,440	22
	16.0	52.7	14,070	16,950	21
	17.0	49.7	13,050	15,650	21
	18.0	46.5	12,110	14,520	20
	19.0	43.1	11,280	13,530	19
20.0	39.5	10,550	12,670	17	
22.0	31.3	9,300	11,170	15	
24.0	20.4	8,260	9,940	10	
27.4 M Boom	5.8	80.5	55,770	73,270	29
	6.0	80.1	52,900	68,930	29
	7.0	77.9	42,160	53,600	29
	8.0	75.8	34,980	43,750	29
	9.0	73.6	29,780	36,880	28
	10.0	71.4	25,910	31,780	28
	11.0	69.2	22,850	27,850	28
	12.0	66.9	20,390	24,790	27
	13.0	64.6	18,380	22,270	27
	14.0	62.3	16,700	20,190	26
	15.0	59.9	15,270	18,430	26
	16.0	57.4	14,040	16,920	25
	17.0	54.9	13,030	15,620	24
	18.0	52.3	12,090	14,500	24
	19.0	49.6	11,270	13,500	23
	20.0	46.8	10,540	12,670	22
22.0	40.7	9,290	11,170	20	
24.0	33.7	8,270	9,950	17	
26.0	25.1	7,400	8,920	14	
30.5 M Boom	6.1	80.9	51,590	67,070	32
	7.0	79.2	42,090	53,560	32
	8.0	77.2	34,910	43,690	32
	9.0	75.3	29,700	36,820	32
	10.0	73.3	25,840	31,710	31
	11.0	71.4	22,770	27,780	31
	12.0	69.4	20,310	24,720	31
	13.0	67.3	18,290	22,200	30
	14.0	65.3	16,600	20,100	30
	15.0	63.2	15,170	18,340	29
	16.0	61.0	13,960	16,840	29
	17.0	58.9	12,940	15,540	28
	18.0	56.6	12,000	14,410	27
	19.0	54.3	11,190	13,420	27
	20.0	52.0	10,450	12,580	26
	22.0	47.0	9,200	11,080	24
24.0	41.6	8,170	9,850	22	
26.0	35.5	7,320	8,840	20	
28.0	28.3	6,590	7,980	16	
30.0	18.7	5,960	7,240	12	
33.5 M Boom	6.7	80.7	44,730	57,310	35
	7.0	80.2	42,020	53,510	35
	8.0	78.4	34,840	43,630	35
	9.0	76.7	29,630	36,750	35
	10.0	74.9	25,760	31,640	34
	11.0	73.1	22,700	27,710	34
	12.0	71.3	20,240	24,660	34
	13.0	69.5	18,220	22,130	33
	14.0	67.7	16,530	20,030	33
	15.0	65.8	15,100	18,270	33
	16.0	63.9	13,870	16,760	32
	17.0	62.0	12,870	15,460	32
	18.0	60.0	11,940	14,340	31
	19.0	58.0	11,110	13,340	30
	20.0	56.0	10,380	12,510	30
	22.0	51.7	9,130	11,010	28

Boom & Mast Length	Radius Meters	Boom Angle Degrees	Side Frames Retracted Kilograms	Side Frames Extended Kilograms	From Boom Pt. to Ground Meters	
33.5 M Boom (cont.)	24.0	47.2	8,110	9,800	27	
	26.0	42.3	7,250	8,780	25	
	28.0	36.9	6,520	7,910	22	
	30.0	30.7	5,900	7,180	19	
	32.0	23.0	5,360	6,540	17	
	36.6 M Boom	7.0	81.0	41,860	53,320	38
		8.0	79.4	34,760	43,570	38
		9.0	77.8	29,540	36,690	38
		10.0	76.2	25,680	31,570	38
		11.0	74.6	22,610	27,630	37
		12.0	72.9	20,140	24,570	37
		13.0	71.3	18,120	22,040	37
14.0		69.6	16,430	19,940	36	
15.0		67.9	15,000	18,180	36	
16.0		66.2	13,770	16,670	35	
17.0		64.5	12,780	15,370	35	
18.0		62.7	11,840	14,230	35	
19.0		61.0	11,010	13,300	34	
20.0		59.1	10,280	12,420	33	
22.0		55.4	9,020	10,910	32	
24.0		51.5	8,000	9,700	31	
26.0	47.3	7,140	8,680	29		
28.0	42.9	6,410	7,810	27		
30.0	38.0	5,800	7,080	24		
32.0	32.6	5,260	6,450	22		
34.0	26.1	4,780	5,890	18		
36.0	17.6	4,360	5,390	13		
39.6 M Boom	7.6	30.8	37,150	46,830	41	
	8.0	80.2	34,690	43,490	41	
	9.0	78.7	29,480	36,630	41	
	10.0	77.3	25,620	31,500	41	
	11.0	75.8	22,540	27,550	40	
	12.0	74.3	20,070	24,510	40	
	13.0	72.8	18,050	21,970	40	
	14.0	71.2	16,360	19,870	40	
	15.0	69.7	14,930	18,110	39	
	16.0	68.2	13,700	16,600	39	
	17.0	66.6	12,710	15,300	38	
	18.0	65.0	11,770	14,170	38	
	19.0	63.4	10,940	13,240	37	
	20.0	61.7	10,210	12,350	37	
	22.0	58.4	8,960	10,860	36	
	24.0	54.9	7,940	9,630	34	
26.0	51.3	7,080	8,610	33		
28.0	47.5	6,360	7,760	31		
30.0	43.4	5,730	7,020	29		
32.0	39.0	5,190	6,380	27		
34.0	34.1	4,720	5,830	24		
36.0	28.5	4,310	5,340	21		
38.0	21.5	3,940	4,910	16		
42.7 M Boom	8.2	80.6	33,270	41,620	44	
	9.0	79.6	29,390	36,560	44	
	10.0	78.2	25,530	31,420	44	
	11.0	76.8	22,450	27,470	44	
	12.0	75.4	19,970	24,420	43	
	13.0	74.0	17,960	21,890	43	
	14.0	72.6	16,260	19,790	43	
	15.0	71.2	14,830	18,010	42	
	16.0	69.8	13,590	16,500	42	
	17.0	68.3	12,610	15,200	42	
	18.0	66.9	11,670	14,060	41	
	19.0	65.4	10,850	13,150	41	
	20.0	63.9	10,110	12,260	40	
	22.0	60.9	8,860	10,760	39	
	24.0	57.8	7,830	9,530	38	
	26.0	54.5	6,970	8,510	37	
28.0	51.1	6,250	7,650	35		
30.0	47.6	5,630	6,920	33		
32.0	43.8	5,080	6,280	32		
34.0	39.8	4,610	5,730	29		
36.0	35.3	4,200	5,240	27		
38.0	30.3	3,820	4,800	23		
40.0	21.1	3,190	4,110	20		
42.0	16.7	3,190	4,060	14		

Boom & Mast Length	Radius Meters	Boom Angle Degrees	Side Frames Retracted Kilograms	Side Frames Extended Kilograms	From Boom Pt. to Ground Meters
45.7 M Boom	8.5	80.8	31,540	39,440	47
	9.0	80.3	29,300	36,480	47
	10.0	79.0	25,440	31,330	47
	11.0	77.7	22,360	27,380	47
	12.0	76.4	19,890	24,340	47
	13.0	75.1	17,860	21,800	46
	14.0	73.8	16,160	19,690	46
	15.0	72.5	14,740	17,930	46
	16.0	71.2	13,500	16,420	45
	17.0	69.9	12,520	15,110	45
	18.0	68.5	11,580	13,970	45
	19.0	67.2	10,760	13,060	44
	20.0	65.8	10,020	12,170	44
	22.0	63.0	8,760	10,660	43
	24.0	60.2	7,730	9,440	42
	26.0	57.2	6,890	8,420	40
28.0	54.2	6,160	7,560	39	
30.0	51.0	5,530	6,820	38	
32.0	47.7	5,000	6,190	36	
34.0	44.2	4,520	5,630	34	
36.0	40.4	4,100	5,140	32	
38.0	36.4	3,730	4,710	29	
40.0	31.9	3,410	4,330	26	
42.0	26.7	3,100	3,970	22	
44.0	20.4	2,830	3,660	18	
48.8 M Boom	9.1	80.7	28,570	35,570	50
	10.0	79.7	25,360	31,250	50
	11.0	78.5	22,270	27,290	50
	12.0	77.3	19,790	24,250	50
	13.0	76.1	17,760	21,710	49
	14.0	74.9	16,060	19,600	49
	15.0	73.6	14,620	17,820	49
	16.0	72.4	13,390	16,310	49
	17.0	71.2	12,420	15,000	48
	18.0	69.9	11,480	13,870	48
	19.0	68.7	10,650	12,960	47
	20.0	67.4	9,910	12,070	47
	22.0	64.8	8,650	10,560	46
	24.0	62.2	7,630	9,340	45
	26.0	59.5	6,770	8,320	44
	28.0	56.7	6,040	7,450	43
30.0	53.8	5,420	6,710	41	
32.0	50.9	4,880	6,080	40	
34.0	47.8	4,410	5,520	38	
36.0	44.5	4,000	5,040	36	
38.0	41.0	3,620	4,600	34	
40.0	37.3	3,290	4,220	31	
42.0	33.2	2,990	3,860	29	
44.0	28.5	2,720	3,550	25	
46.0	23.1	2,480	3,260	21	
48.0	16.0	2,250	3,000	15	
51.8 M Boom	9.4	80.9	27,210	33,270*	53
	10.0	80.3	25,260	31,160	53
	11.0	79.2	22,170	27,200	53
	12.0	78.0	19,710	24,170	53
	13.0	76.9	17,670	21,620	53
	14.0	75.8	15,980	19,510	52
	15.0	74.6	14,540	17,740	52
	16.0	73.5	13,300	16,220	52
	17.0	72.3	12,330	14,920	51
	18.0	71.2	11,390	13,780	51
	19.0	70.0	10,560	12,870	51
	20.0	68.8	9,830	11,550	50
	22.0	66.4	8,580	10,480	50
	24.0	64.0	7,550	9,250	49
	26.0	61.5	6,690	8,230	48
	28.0	58.9	5,960	7,370	46
30.0	56.3	5,340	6,640	45	
32.0	53.6	4,800	6,000	44	
34.0	50.8	4,320	5,440	42	
36.0	47.8	3,910	4,960	40	
38.0	44.8	3,540	4,520	38	
40.0	41.5	3,200	4,120	36	
42.0	38.0	2,910	3,780	34	

(Continued)

LIFT RATINGS IN KILOGRAMS (continued)

With 59H Open Throat Boom, 7.3M Floating Mast and 23,134 Kg Counterweight Fully Retracted

Boom & Mast Length	Radius Meters	Boom Angle Degrees	Side Frames Retracted Kilograms	Side Frames Extended Kilograms	From Boom Pt. to Ground Meters
51.8 M Boom <i>(cont.)</i>	44.0	34.3	2,640	3,470	31
	46.0	30.1	2,390	3,180	28
	48.0	25.3	2,170	2,920	24
	50.0	19.4	1,960	2,680	19
	10.1	80.8	24,980	29,050*	56
54.9 M Boom	11.0	79.8	22,080	27,110	56
	12.0	78.7	19,600	24,080	56
	13.0	77.7	17,570	21,530	56
	14.0	76.6	15,870	19,410	55
	15.0	75.5	14,430	17,640	55
	16.0	74.4	13,200	16,130	55
	17.0	73.3	12,240	14,820	55
	18.0	72.2	11,290	13,680	54
	19.0	71.1	10,460	12,780	54
	20.0	70.0	9,720	11,890	54
	22.0	67.8	8,470	10,380	53
	24.0	65.5	7,430	9,150	52
	26.0	63.2	6,570	8,120	51
	28.0	60.8	5,850	7,270	50
	30.0	58.4	5,230	6,530	49
	32.0	55.9	4,680	5,890	47
	34.0	53.3	4,210	5,330	46
	36.0	50.7	3,800	4,840	44
	38.0	47.9	3,420	4,400	43
	40.0	45.0	3,100	4,020	41
	42.0	42.0	2,790	3,670	39
	44.0	38.7	2,520	3,350	36
	46.0	35.2	2,280	3,070	34
	48.0	31.4	2,060	2,810	31
	50.0	27.1	1,840	2,560	27
	52.0	22.0	1,660	2,340	23
54.0	15.5	1,490	2,150	17	
57.9 M Boom	10.4	81.0	23,880	25,390*	59
	11.0	80.3	21,990	25,210*	59
	12.0	79.3	19,510	23,990	59
	13.0	78.3	17,470	21,440	59
	14.0	77.3	15,770	19,320	59
	15.0	76.3	14,330	17,540	58
	16.0	75.3	13,210	16,020	58
	17.0	74.2	12,130	14,710	58
	18.0	73.2	11,190	13,580	57
	19.0	72.2	10,360	12,680	57
	20.0	71.1	9,620	11,790	57
	22.0	69.0	8,360	10,280	56
	24.0	66.9	7,330	9,040	55
	26.0	64.7	6,480	8,030	54
	28.0	62.5	5,750	7,170	53
	30.0	60.2	5,120	6,430	52
	32.0	57.9	4,580	5,780	51
	34.0	55.5	4,110	5,230	50
	36.0	53.1	3,690	4,740	48
	38.0	50.6	3,320	4,300	47
	40.0	48.0	2,990	3,920	45
	42.0	45.2	2,690	3,570	43
	44.0	42.3	2,410	3,250	41
	46.0	39.3	2,170	2,960	39
	48.0	36.1	1,950	2,710	36
	50.0	32.5	1,740	2,460	33
52.0	28.6	1,560	2,250	30	
54.0	24.1	1,390	2,050	26	
56.0	18.7	1,230	1,860	20	
61.0 M Boom	11.0	80.8	21,890	22,350*	62
	12.0	79.9	19,410	22,050*	62
	13.0	78.9	17,370	21,350	62
	14.0	77.9	15,670	19,230	62
	15.0	77.0	14,220	17,450	61
	16.0	76.0	13,100	15,920	61
	17.0	75.0	12,030	14,610	61
	18.0	74.1	11,090	13,470	61
	19.0	73.1	10,250	12,580	60

Boom & Mast Length	Radius Meters	Boom Angle Degrees	Side Frames Retracted Kilograms	Side Frames Extended Kilograms	From Boom Pt. to Ground Meters
61.0 M Boom <i>(cont.)</i>	20.0	72.1	9,510	11,680	60
	22.0	70.1	8,260	10,180	59
	24.0	68.1	7,230	8,950	59
	26.0	66.1	6,370	7,920	58
	28.0	64.0	5,630	7,050	57
	30.0	61.9	5,010	6,310	56
	32.0	59.7	4,470	5,680	55
	34.0	57.5	4,000	5,120	53
	36.0	55.2	3,570	4,630	52
	38.0	52.9	3,200	4,190	51
	40.0	50.5	2,870	3,800	49
	42.0	48.0	2,570	3,450	47
	44.0	45.4	2,300	3,140	45
	46.0	42.7	2,050	2,850	43
	48.0	39.8	1,830	2,580	41
	50.0	36.8	1,630	2,350	38
52.0	33.5	1,440	2,130	36	
54.0	29.9	1,260	1,920	32	
56.0	25.9	1,100	1,740	29	
58.0	21.1	–	1,570	24	
60.0	15.0	–	1,400	18	
64.0 M Boom	11.6	80.7	19,780*	19,780*	65
	12.0	80.3	19,310	19,640*	65
	13.0	79.4	17,270	19,330*	65
	14.0	78.5	15,560	18,870*	65
	15.0	77.6	14,130	17,350	65
	16.0	76.7	13,020	15,830	64
	17.0	75.8	11,940	14,520	64
	18.0	74.8	11,000	13,370	64
	19.0	73.9	10,170	12,490	64
	20.0	73.0	9,430	11,600	63
	22.0	71.1	8,160	10,080	63
	24.0	69.2	7,130	8,850	62
	26.0	67.3	6,270	7,820	61
	28.0	65.3	5,540	6,960	60
	30.0	63.3	4,920	6,230	59
	32.0	61.3	4,380	5,590	58
	34.0	59.2	3,900	5,020	57
	36.0	57.1	3,480	4,530	56
	38.0	54.9	3,110	4,100	54
	40.0	52.7	2,780	3,710	53
	42.0	50.4	2,470	3,360	51
	44.0	48.1	2,210	3,050	50
	46.0	45.6	1,960	2,750	48
	48.0	43.0	1,740	2,500	46
	50.0	40.3	1,530	2,250	43
	52.0	37.5	1,350	2,040	41
54.0	34.4	1,170	1,830	38	
56.0	31.1	1,010	1,650	35	
58.0	27.4	–	1,480	31	
60.0	23.1	–	1,310	27	
62.0	18.0	–	1,170	22	
64.0	10.7	–	1,030	14	
67.1 M Boom	11.9	80.9	17,560*	17,560*	68
	12.0	80.8	17,560*	17,560*	68
	13.0	79.9	17,170	17,280*	68
	14.0	79.1	15,460	16,730*	68
	15.0	78.2	14,020	16,430*	68
	16.0	77.3	12,910	15,720	67
	17.0	76.4	11,840	14,410	67
	18.0	75.6	10,890	13,260	67
	19.0	74.7	10,060	12,390	67
	20.0	73.8	9,320	11,500	66
	22.0	72.0	8,050	9,980	66
	24.0	70.2	7,020	8,740	65
	26.0	68.3	6,160	7,720	64
	28.0	66.5	5,430	6,860	64
	30.0	64.6	4,800	6,110	63
	32.0	62.7	4,260	5,470	62
34.0	60.8	3,780	4,910	61	
36.0	58.8	3,370	4,430	59	

Boom & Mast Length	Radius Meters	Boom Angle Degrees	Side Frames Retracted Kilograms	Side Frames Extended Kilograms	From Boom Pt. to Ground Meters
67.1 M Boom <i>(cont.)</i>	38.0	56.7	3,000	3,990	58
	40.0	54.7	2,660	3,590	57
	42.0	52.5	2,360	3,240	55
	44.0	50.4	2,090	2,930	54
	46.0	48.1	1,840	2,640	52
	48.0	45.8	1,620	2,380	50
	50.0	43.3	1,410	2,140	48
	52.0	40.8	1,220	1,910	46
	54.0	38.0	1,050	1,720	43
	56.0	35.2	1,530	–	41
	58.0	32.1	1,350	–	38
	60.0	28.7	1,200	–	34
	62.0	24.9	1,050	–	30
70.1 M Boom	12.5	80.8	15,450*	15,450*	71
	13.0	80.4	15,210*	15,210*	71
	14.0	79.5	14,960*	14,960*	71
	15.0	78.7	13,910	14,730*	71
	16.0	77.9	12,810	14,290*	71
	17.0	77.0	11,730	13,800*	70
	18.0	76.2	10,790	13,160	70
	19.0	75.3	9,950	12,290	70
	20.0	74.5	9,210	11,390	70
	22.0	72.8	7,960	9,880	69
	24.0	71.1	6,920	8,650	68
	26.0	69.3	6,060	7,620	68
	28.0	67.6	5,320	6,750	67
	30.0	65.8	4,700	6,010	66
	32.0	64.0	4,150	5,360	65
	34.0	62.2	3,680	4,810	64
	36.0	60.3	3,260	4,320	63
	38.0	58.4	2,890	3,880	62
	40.0	56.4	2,550	3,480	60
	42.0	54.4	2,260	3,140	59
	44.0	52.4	1,980	2,820	58
	46.0	50.3	1,730	2,530	56
	48.0	48.1	1,510	2,270	54
	50.0	45.9	1,300	2,030	52
	52.0	43.6	1,120	1,820	50
	54.0	41.1	–	1,610	48
56.0	38.6	–	1,430	46	
58.0	35.9	–	1,250	43	
60.0	33.0	–	1,090	40	
73.2 M Boom	12.8	80.9	13,530*	13,530*	74
	13.0	80.8	13,500*	13,500*	74
	11.0	80.0	12,670*	12,670*	74
	15.0	79.2	11,920*	11,920*	74
	16.0	78.4	11,780*	11,780*	74
	17.0	77.6	11,640	11,650*	74
	18.0	76.8	10,690	11,020*	73
	19.0	76.0	9,850	10,930*	73
	20.0	75.2	9,110	10,850*	73
	22.0	73.5	7,840	9,780	72
	24.0	71.9	6,810	8,540	72
	26.0	70.2	5,940	7,510	71
	28.0	68.6	5,210	6,640	70
	30.0	66.9	4,590	5,900	69
	32.0	65.1	4,040	5,260	68
	34.0	63.4	3,560	4,700	67
	36.0	61.6	3,140	4,200	66
	38.0	59.8	2,770	3,760	65
	40.0	58.0	2,440	3,380	64
	42.0	56.1	2,140	3,020	63
	44.0	54.2	1,860	2,700	61
	46.0	52.3			

CRANE RATING DATA

WARNING

These lift ratings are invalid if the crane has been modified or altered by use of other than **GENUINE AMERICAN PARTS** as such modifications or alterations may affect its capacity or safe operation. See American Crane Corporation Service Bulletin #259.

The ratings in this chart are for planning purposes only. Only those ratings specifically assigned to a crane and mounted in the operator's cab or in the Operator's Manual should be used for actual operation.

Ratings in this chart are in POUNDS (Kgs) and do not exceed the percentage of tipping specified for this crane by ANSI B30.5. All ratings require that the crane be standing level on a firm uniformly supporting surface.

Do not lift loads in excess of those shown on this chart. Lifting loads in excess of those shown or operation not in accordance with good operating practice, including limitations shown on page 3499 of Operator's Manual, can cause tipping, structural damage or catastrophic failure.

Asterisk (*) areas on this chart indicate ratings which are limited by strength of material or factors other than stability (tipping).

"RADIUS IN FEET" is the horizontal distance at ground level from the crane centerline of rotation to a vertical line through the center of gravity of the suspended load.

When using the main boom fall with jib in place, the main fall ratings must be reduced by the jib effective weight shown on the jib rating chart plus twice the weight of all suspended blocks, slings, rope, etc., at the jib fall.

When using the main boom fall with boom tip extension in place, the main fall ratings must be reduced by the weight of the boom tip extension plus twice the weight of all suspended blocks, slings, rope, etc., at the boom tip extension fall.

Blocks, slings, buckets and other load carrying devices are considered part of the load. The weight of standard hoisting ropes for the rating at a given radius has been calculated as part of the boom point load and need not be considered in determining net allowable loads.

This chart was developed exclusively for use with a boom only. Under no circumstances are these ratings to be interpreted for use with a jib.

Ratings shown on this chart make no allowance for such factors as out of plumb loads, wind, poor soil conditions, improper inflation of rubber tires and dynamic effects due to excessive operating speeds. The user (operator) must exercise judgement to make allowance for these conditions. See page 3499 of Operator's Manual for detailed information.

No account is taken of the wind force on the load. This effect, which can be substantial for loads with large surface areas, must be considered by the user. In any wind it is strongly recommended that taglines be used to control the load.

MAST HOIST LINE is 17 parts of .75 inch (19 mm) diameter 6 x 26, WS, FW, RAL, IWRC, EIPS wire rope with a minimum breaking strength of 58,800 pounds (26,672 Kg).

PENDANT SUSPENSION LINE is 2 parts of 1.375 inch (35 mm) diameter EEIPS wire rope with a minimum breaking strength of 211,000 pounds (95,710 Kg).

MAIN LOAD LINE is 1 inch (25 mm) diameter 6 x 25, RRL, IWRCP, EIPS wire rope with a minimum breaking strength of 103,400 pounds (46,901 Kg).

Erection "OVER THE END" is with the boom over the idler end with idler tumblers blocked (See Operator's Manual for blocking instructions). Erection "OVER THE SIDE" is with the boom 90° to the side frames and with the side frames extended. Blocks, slings and other load carrying devices must be on the ground during erection.

LOAD HOISTING INFORMATION

Maximum Lifting Capacity in Pounds	Minimum Parts of Line	Maximum Hoisting Distance in Feet	
		Main (Front)	Aux. (rear)
250,000	9	160	160
236,000	8	180	180
206,500	7	200	200
177,000	6	240	240
147,500	5	290	290
118,000	4	360	360
88,500	3	480	480
59,000	2	730	730
29,500	1	1,460	1,460

Maximum Lifting Capacity in Kilograms	Minimum Parts of Line	Maximum Hoisting Distance in Meters	
		Main (Front)	Aux. (rear)
113,400	9	49	49
107,049	8	55	55
93,668	7	61	61
80,287	6	73	73
66,906	5	88	88
53,524	4	110	110
40,143	3	146	146
26,762	2	223	223
13,381	1	445	445

BOOM COMPOSITION CHART

Boom Length		25' (7.6 M) 59H Inner	10' (3.0 M) 59H Center	20' (6.1 M) 59H Center	40' (12.2 M) 59H Center	25' (7.6 M) 59H Outer
Feet	Meters					
50	15.2	1	0	0	0	1
60	18.3	1	1	0	0	1
70	21.3	1	0	1	0	1
80	24.4	1	1	1	0	1
90	27.4	1	0	0	1	1
100	30.5	1	1	0	1	1
110	33.5	1	0	1	1	1
120	36.6	1	1	1	1	1
130	39.6	1	0	0	2	1
140	42.7	1	1	0	2	1

Boom Length		25' (7.6 M) 59H Inner	10' (3.0 M) 59H Center	20' (6.1 M) 59H Center	40' (12.2 M) 59H Center	25' (7.6 M) 59H Outer
Feet	Meters					
150	45.7	1	0	1	2	1
160	48.8	1	1	1	2	1
170	51.8	1	0	0	3	1
180	54.9	1	1	0	3	1
190	57.9	1	0	1	3	1
200	61.0	1	1	1	3	1
210	64.0	1	0	0	4	1
220	67.1	1	1	0	4	1
230	70.1	1	0	1	4	1
240	73.2	1	1	1	4	1

MAXIMUM BOOM & JIB SELF-ERECTION DATA

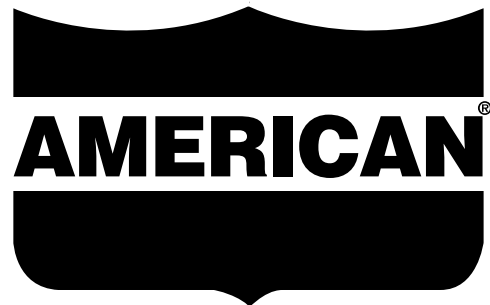
Jib	Over the End				Over the Side			
	Boom Length		Jib Length		Boom Length		Jib Length	
	Feet	Meters	Feet	Meters	Feet	Meters	Feet	Meters
#9HL	240	73.2	0	0.0	230	70.1	0	0.0
	230	70.1	40	12.2	220	67.1	0	0.0
	220	67.1	80	24.4	210	64.0	40	12.2
	-	-	-	-	200	61.0	50	15.2
	-	-	-	-	190	57.9	60	18.3
	-	-	-	-	180	54.9	70	21.3
	-	-	-	-	-	-	-	-

WEIGHTS

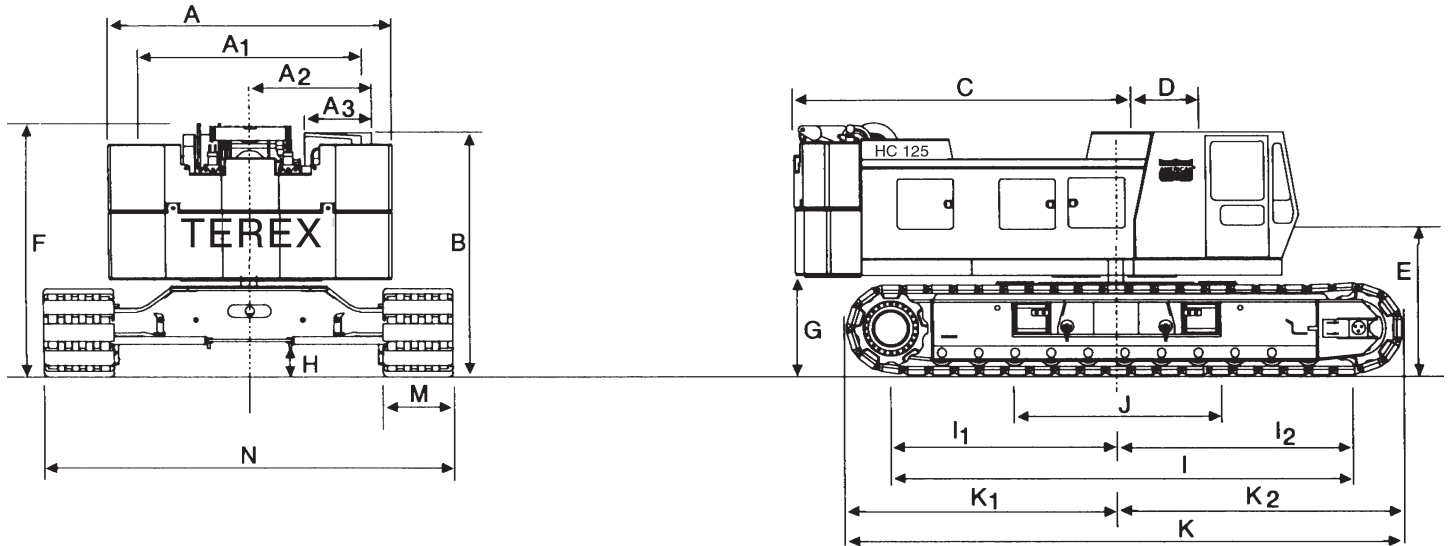
	LBS.	KG
Lifting Crane with standard counterweight, 50' (15.2 m) boom with offset tip, transport package, 3rd drum and 38" (965 mm) shoes	209,740	95,137
Lifting crane equipped as above and 44" (1,117 mm) shoes	213,030	96,629
Counterweight Including:	52,150	23,655
Basic	31,000	14,061
Overlay	20,000	9,072
2 Removal Cylinders	1,150	522
Crane boom outer (six sheave)	3,260	1,480
Crane boom inner (and misc.)	4,345	1,971
Crawler side frames 38" (965 mm) shoes	70,590	32,020
Crawler Side Frames 44" (1,117 mm) shoes..	73,880	33,500
Travel weight includes upper, carbody, transportation package, boom inner, counterweight handling sheaves and third drum	83,740	37,985
Second swing motor	580	263

GROUND PRESSURES

Lifting crane with 50 ft. (15.2 m) boom with offset tip and standard counterweight.	
38" (965 mm) shoes	44" (1,117 mm) shoes
10.5 PSI	9.03 PSI

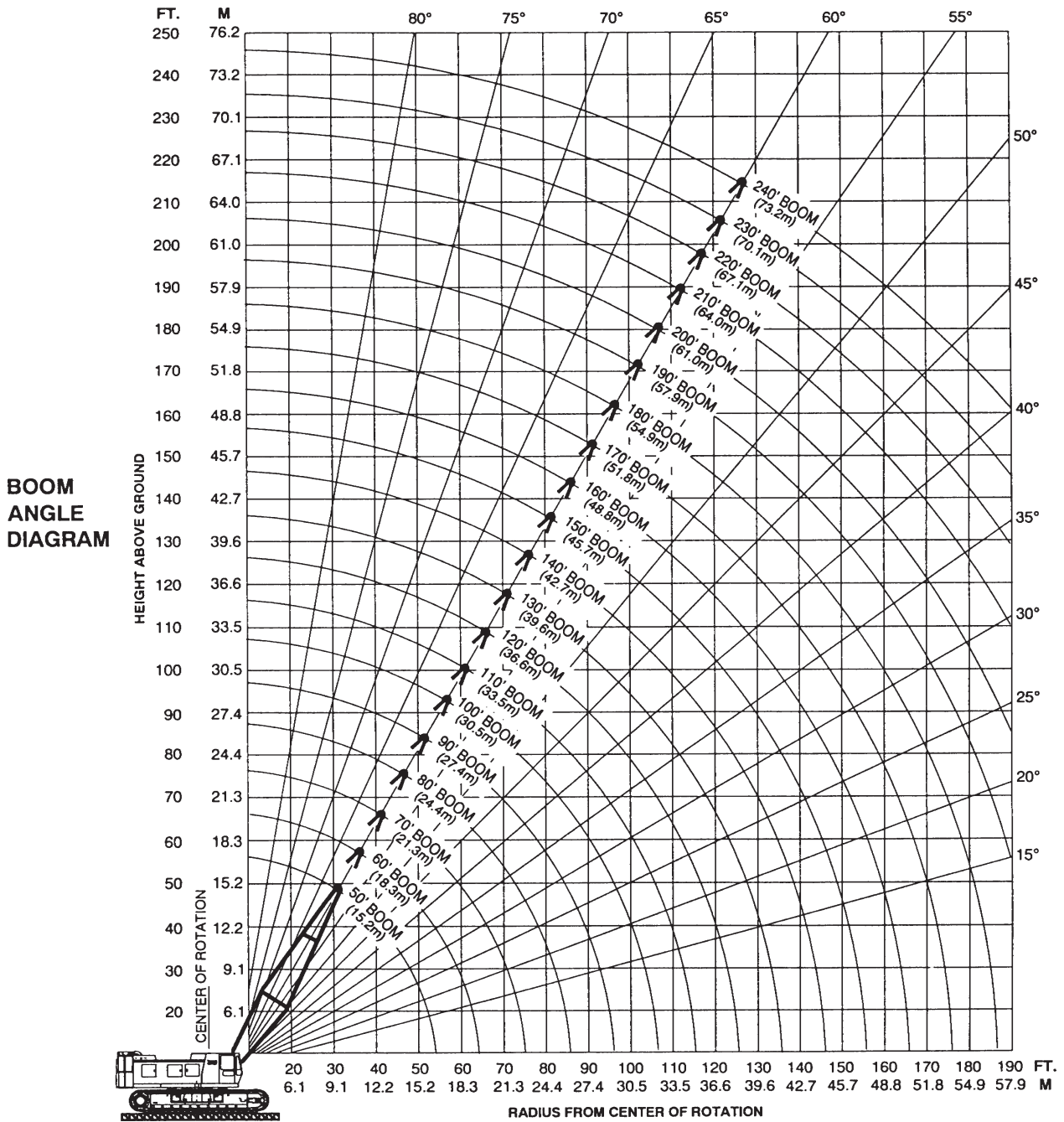


HC 125 HYDRAULIC CRAWLER CRANE GENERAL DIMENSIONS



	FEET	MM		FEET	MM		
A	Width of counterweight	14'-0"	4,267	I ₂	Center of idler tumbler to center of rotation	10' 11-5/8"	3,342
A ₁	Width of machinery cab	11'-5"	3,480	J	Width of carbody (including vertical jacks)	10'-10"	3,300
A ₂	Centerline of machine to outside of operator's cab	6'-0"	1,829	K	Overall length of crawlers	24' 7-9/16"	7,507
A ₃	Width of operator's cab	3'-4"	1,016	K ₁	Over drive tumbler to center of rotation	12' 0-1/2"	3,670
B	Height over operator's cab	12'-0"	3,658	K ₂	Over idler tumbler to center of rotation	12' 7-1/16"	3,836
C	Tail swing w/WorkHorse retracted	16'-3"	4,953	M	Width of tread shoe (standard)	38"	965
D	Center rotation to boom feet	3'-6"	1,066		(optional)	44"	1,118
E	Ground to center of boom foot	6'-8"	2,032	N	Overall width of crawlers		
F	Height over boom hoist	12' 3-9/16"	3,748		38" (966 mm) shoes retracted	15'-2"	4,623
G	Ground to bottom of counterweight	4' 6-3/4"	1,391		38" (966 mm) shoes extended	18'-5"	5,613
H	Minimum ground clearance	1' 7-1/2"	495		44" (1,118 mm) shoes retracted	15'-8"	4,775
I	Center to center of crawler tumblers	20' 10-5/16"	6,358		44" (1,118 mm) shoes extended	18'-11"	5,766
I ₁	Center of drive tumbler to center of rotation	9' 10-3/4"	3,016	N ₁	Length over crawler axles	15'-2"	4,623

AMERICAN MODEL HC 125 WORKING RANGES



For more information, product demonstration, or details on sales, lease and rental plans, please contact your local Terex American Crane Distributor.

We reserve the right to amend these specifications at any time without notice. The only warranty applicable is our standard written warranty applicable to the particular product and sale. We make no other warranty, expressed or implied.

TEREX CRANES

AMERICAN CRANE CORPORATION
 202 Raleigh Street • Wilmington, NC 28412 USA
 (910) 395-8500 • FAX: (910) 395-8538