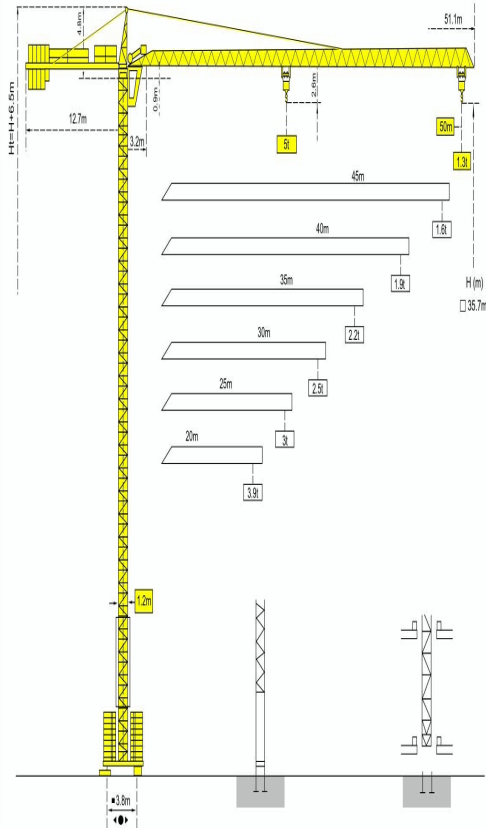


机构-Mechanisms

		U	ψ		ch-PS	KW			
		min	t	min	hp				
起升 Hoisting		25PC13	33	2.5	16.5	5	323m	25	18
			66	1.3	33	2.6			
变幅 Trolleying		4 D3 V3		15	30	58		4	3
回转 Slewing		RCV 60		0-0.8	tr/min	rpm		8	6
行走 Travelling		ZF	TVD324		26			2X4	2X2.9
行走 Travelling		ZC-ZFC	RT224		25			2X4	2X2.9
电网 - Mains supply								400V(+6%-10%) 50Hz	
所需功率 - Necessary electric power								25PC: 35kVA	
发电机组 - Generator set								84/534-87/405	

*请向我方咨询 - Consult us

TOPKIT MC 80A

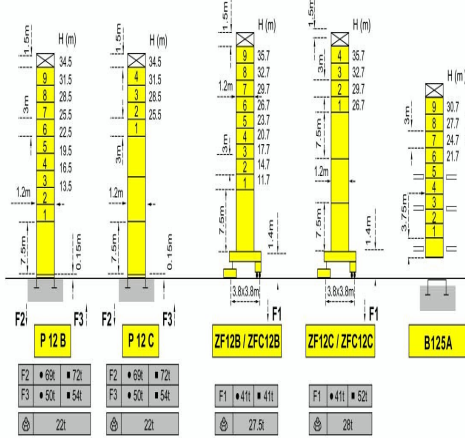


TOPKIT MC 80A

标准节 - Masts

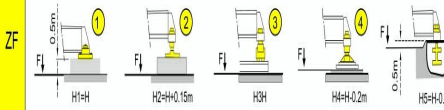
Φ 1.2m

起重臂 - Jib
30m-55m

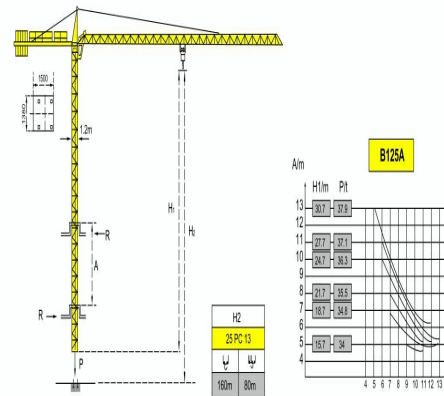


F=反力 - Reactions

ZF



楼板上爬升 - Climbing crane

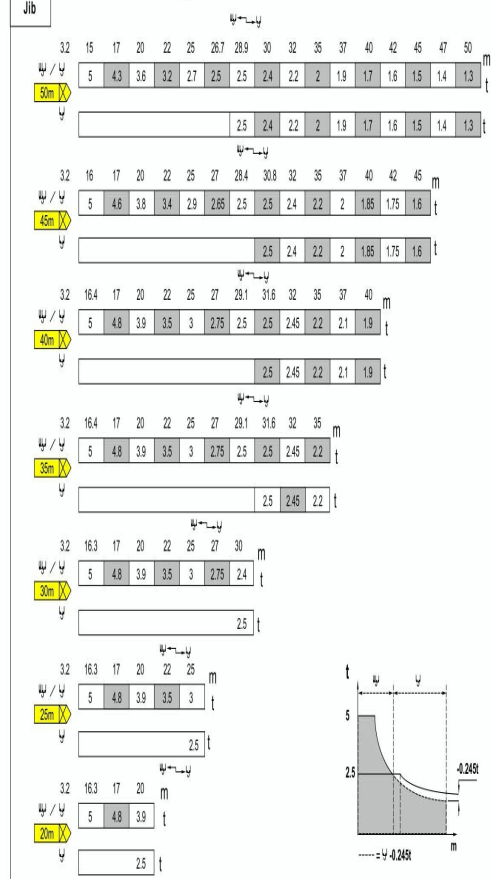


A 各标准节之间距离
H1 塔机高度
P 工作状态下爬升重量
R 水平反力

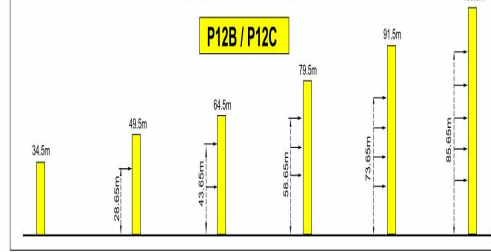
A Distance between collars
H1 Crane height
P Crane weight(in service)
R Horizontal reaction

起重臂
Fleche
Jib

负荷曲线 - Load diagrams



附着 - Anchorages



工作标志
非工作状态
空载、无锚固
起重臂和高度均为最大值

In-service
Out of service
Without load and
tallest with longest jib
and maximum height.

TOPKIT MC 80A

波坦公司
POTAIN
市场总部(ADD): 上海市中山西路933号虹桥银城12楼
总机(TEL): 021-51113579
传真(FAX): 021-51113578
邮编(PC): 200051

禁止复制和翻印 Copyright. Reproduction interdite © POTAIN 2004
TOPKIT MC 80A

波坦 POTAIN

