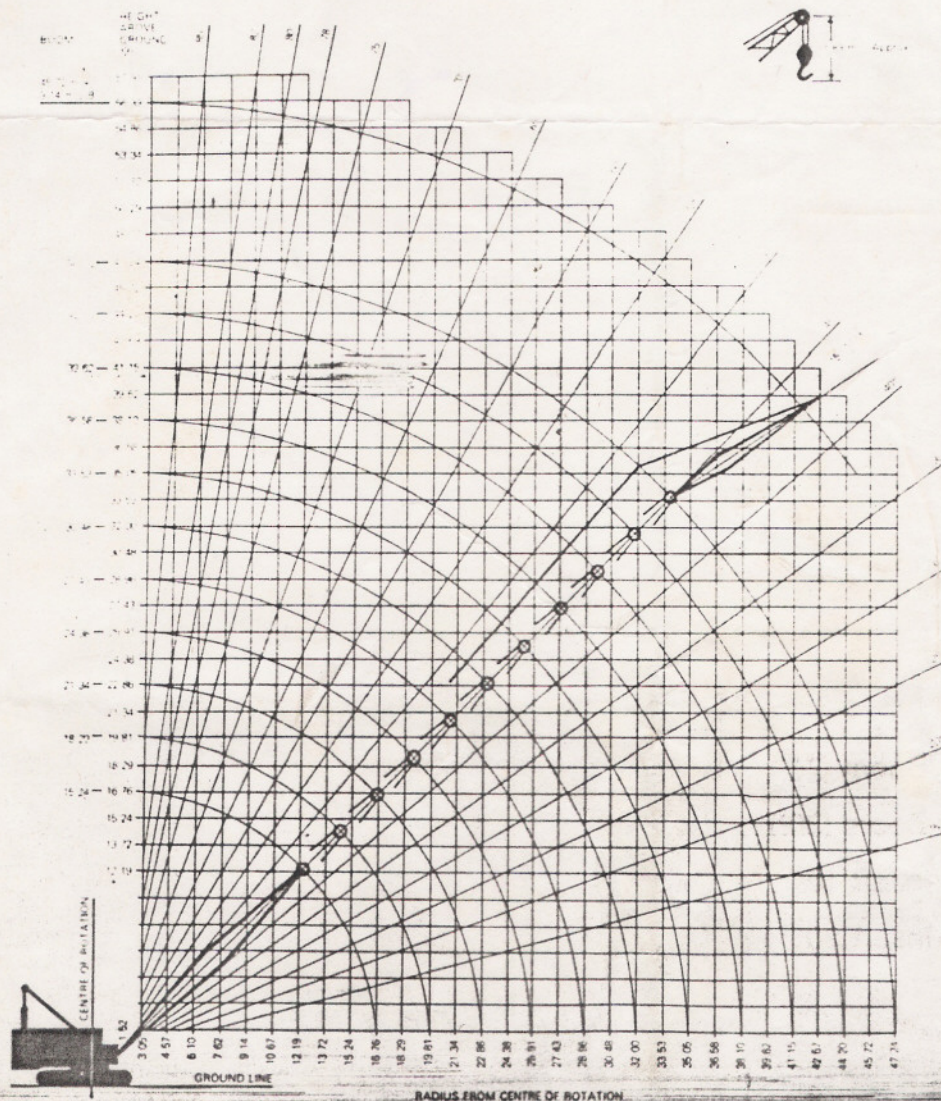


50 60 70 80 90 100 110 120 130 140 150

### RATED CRANE LOADS IN KG (AS PER IS 4573)

Operating radius	15.24m boom	18.29m boom	21.34m boom	24.38m boom	27.43m boom	30.48m boom	33.53m boom	36.58m boom	39.62m boom	42.67m boom	45.72m boom
3.67 <i>12</i>	75000	.....	.....	.....	.....	.....	.....	.....	.....	.....	.....
4.57 <i>15</i>	52165	51960	.....	.....	.....	.....	.....	.....	.....	.....	.....
6.10 <i>20</i>	32660	32455	32320	32115	31980	.....	.....	.....	.....	.....	.....
7.62 <i>25</i>	24040	23835	23700	23495	23360	23155	23020	.....	.....	.....	.....
9.14 <i>30</i>	19005	18800	18665	18460	18325	18120	17985	17780	.....	.....	.....
10.67 <i>35</i>	15600	15400	15260	15060	14920	14720	14580	14380	14240	14040	.....
12.19 <i>40</i>	13155	12950	12815	12610	12475	12270	12130	11930	11790	11590	11450
13.72 <i>45</i>	11340	11135	11000	10795	10660	10455	10320	10115	9980	9775	9640
15.24 <i>50</i>	9885	9685	9546	9345	9205	9005	8865	8660	8525	8320	8185
16.76 <i>55</i>	.....	8595	8460	8255	8120	7915	7780	7575	7440	7235	7095
18.29 <i>60</i>	.....	7685	7550	7345	7210	7005	6870	6665	6530	6325	6190
19.81 <i>65</i>	.....	.....	6735	6530	6395	6190	6055	5850	5715	5510	5375
21.34 <i>70</i>	.....	.....	6055	5850	5715	5510	5375	5170	5035	4830	4695
24.38 <i>75</i>	.....	.....	.....	4850	4715	4510	4375	4170	4035	3830	3695
27.43 <i>80</i>	.....	.....	.....	.....	3900	3695	3560	3355	3220	3015	2880
30.48 <i>85</i>	.....	.....	.....	.....	.....	3060	2925	2720	2585	2480	2245
33.53 <i>90</i>	.....	.....	.....	.....	.....	.....	.....	2220	2085	1880	1745
36.58 <i>95</i>	.....	.....	.....	.....	.....	.....	.....	.....	.....	1425	1290

### CRANE RANGE DIAGRAM



#### NOTE

- (a) Ratings are as per IS 4573, ie, 75% of tipping load for forward stability and 70% for backward stability.
- (b) Capacities include the weight of the hook block, slings, etc.
- (c) Capacities are for machine standing on firm, level uniform supporting surface and depend upon the mounting, Ground, boom length, radius of operation and proper handling; all of which must be taken into account by the user.
- (d) Deduct 680 kg for 6.10m jib and 910 kg for 9.14m jib.

#### CAUTION

Machine must not be used for lifting operations with the gantry in lowered position.