

# **CX900**

**HYDRAULIC CRAWLER CRANE**

## **S**pecifications

**HITACHI**

# CX900

HYDRAULIC CRAWLER CRANE

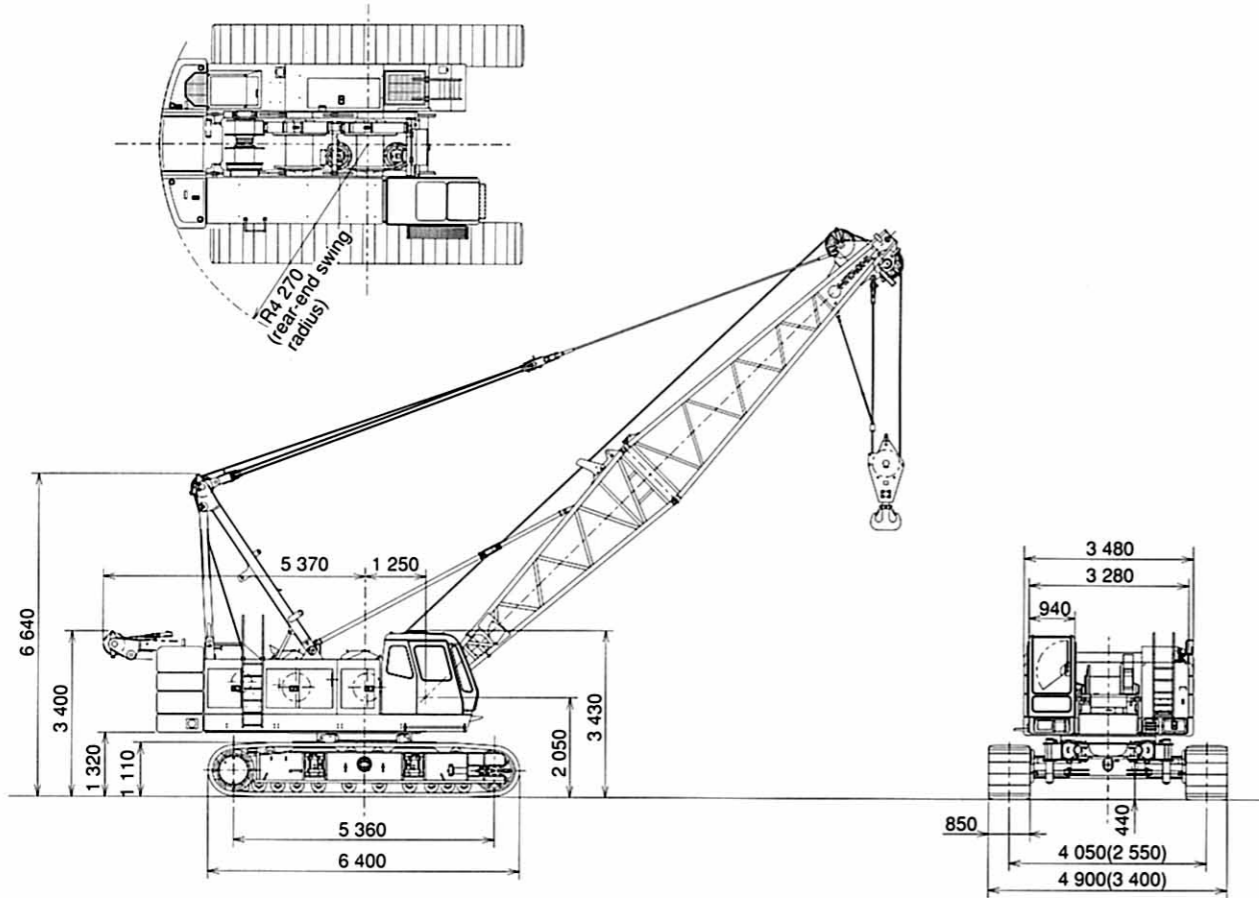
## INDEX

<b>CRAWLER CRANE</b>	■Dimensions ■Speciflcations.....	4
	■Working Ranges .....	9
	■Crane Ratings(Main Boom in 360° Working Area) .....	10
	■Crane Ratings(Auxiliary Jib in 360° Working Area) .....	12
	■Crane Ratings(Main Boom with Auxiliary Jib in 360° Working Area) .....	14
	■Crane Ratings(Jib in 360° Working Area) .....	16
	■Crane Ratings(Main Boom with Jib in 360° Working Area).....	24
	■Crane Boom Construction ■Crane Jib Construction ■Component Weights and Dimensions for Transport .....	32
<b>FULL-LUFFING TOWER CRANE</b>	■Dimensions ■Tower Jib Construction ■Specifications .....	33
	■Rated loads for 27m Tower Crane ■Working Ranges .....	34
	■Rated loads for 30m Tower Crane ■Working Ranges .....	35
	■Rated loads for 33m Tower Crane ■Working Ranges .....	36
	■Rated loads for 36m Tower Crane ■Working Ranges .....	37
	■Rated loads for 39m Tower Crane ■Working Ranges .....	38
	■Rated loads for 42m Tower Crane ■Working Ranges .....	40
	■Rated loads for 45m Tower Crane ■Working Ranges .....	42
	■Tower Boom Construction ■Tower Jib Construction ■Component Weights and Dimensions for Transport .....	44
	<b>CLAMSHELL</b>	■Dimensions ■Speciflcations ■Working Ranges ■Clamshell Bucket .....
<b>TECHNICAL DATA</b> ■Standard and Optional Equipment .....		46-47

Note : "Ton" or "t" implies metric tons in this catalog.

## ■ Dimensions

Unit : mm



Dimensions shown in ( ) are with side frames fully retracted.

## ■ Specifications

Maximum rated load	ton×m	90×4
Basic boom length	m	13
Max. boom length	m	61
Jib length	m	10-28
Max. boom with jib length	m	49+28
Line speeds*		
Main hoist drum	m/min	105/60/30
Aux. hoist drum	m/min	105/60/30
Boom hoist drum	m/min	55
Swing speed	min <sup>-1</sup> (rpm)	2.7 (2.7)
Travel speed	km/h	1.6/1.1
Gradeability	% (°)	30 (16)
Engine model		Mitsubishi 6D24-T
Rated horsepower	kW/min <sup>-1</sup> (PS/rpm)	184/2 000 (250/2 000)
Ground pressure	kPa (kgf/cm <sup>2</sup> )	89 (0.91)
Operating weight	ton	87.5 (Equipped with 13m boom and 90ton capacity hook)

Notes: 1. Data is expressed in SI units, along with conventional units in ( ).  
2. Line speeds marked with an asterisk ( \* ) will vary with the load.



# SUPERSTRUCTURE



## Engine

Model ..... Mitsubishi 6D24-T  
 Type ..... Water-cooled, 4-cycle, 6-cylinder, direct fuel injection type diesel engine  
 Rated horsepower ..... 184 kW (250 PS) at 2 000 min<sup>-1</sup> (DIN 6 271, net) (2 000 rpm)  
 Maximum torque ..... 981 N·m (100 kgf·m) at 1400 min<sup>-1</sup> (1 400 rpm)  
 Piston displacement .... 11.945 L  
 Fuel tank capacity ..... 415 L  
 Electric system ..... DC 24 V



## Main and Auxiliary Hoist Mechanism

- The Hitachi CX900 is equipped with dual hoist mechanisms, each consisting of independent main and auxiliary hoist drums driven by a hydraulic motor.
- Hoisting and lowering the load is achieved by forward/reverse rotation of the hydraulic motor.
- Power lowering is carried out with a hydraulic brake.
- Hoisting and lowering can be carried out at three speeds-fast, medium and slow-to suit job requirements.
- Each drum is fitted with a friction band-type brake. This allows free fall (rapid lowering) of the hook.
- Main and auxiliary hoist drums are each fitted with a pawl-type drum lock to positively hold the load in the air.
- The drum brake is an external contracting friction band-type using durable non-asbestos lining.
- The brake is controlled by the hydraulic servo system to reduce control force. Two brake modes are available; auto brake or free fall.



## Boom Hoist Mechanism

- Boom hoisting/lowering is done by forward/reverse rotation of a hydraulic motor. Boom lowering is made by power lowering through a hydraulic brake.
- Both hydraulic brake and spring-set/hydraulic-released multiplate disc type brake offer positive stopping of the boom. When the boom is hoisted or lowered, brakes are automatically released.
- Drum pawl lock is manually controlled from operator's seat.



## Swing Mechanism

- Independent operation
- Driven by two hydraulic motors through reduction gear. Swing speeds are freely controllable from zero to maximum speed with a single lever.

### Swing Brake

The disc-type swing brake can be hydraulically applied by the brake switch on the swing lever.

### Swing Lock

Manual mechanical-lock with a rod tip engaged in the holder of the track frame for transportation.

### Swing Circle

Single-row shear-type ball bearing with heat-treated internal gear.



## Revolving Frame

All welded steel construction, stress-relieved, precision-machined for rigidity and strength

### Gantry

Lowerable for transportation

### Counterweight

Welded structure, total weight 31 300 kg  
 Consisting of 4 sections : One 8 580 kg  
   One 7 350 kg  
   One 7 170 kg  
   One 8 170 kg



## Boom

### Tubular Chord Crane Boom

1 500 mm wide by 1 500 mm deep at connection, lattice construction using high-tensile steel tubular chords

Basic boom ..... Total length 13.0 m, 2-piece construction; upper section 6.5 m and lower section 6.5 m

Boom point ..... Offset boom point, 4 sheaves (560 mm PCD) mounted on anti-friction bearings on boom top

Boom inserts ..... 3.0 m, 6.0 m and 9.0 m long available

Connection type... Pin-connected

Boom backstop ... Dual-rail, telescopic tubular construction with spring damper

Boom hoist bridle.. Serves as connection between pendants and boom hoist wire rope reeving, equipped with 6 sheaves (420 mm PCD) for 12-part boom hoist wire rope reeving

### Crane Jib

940 mm wide by 750 mm deep at connection, lattice construction using high-tensile steel tubular chords

Jib length ..... Total length 10.0 m, 2-piece construction; upper section 5.0 m and lower section 5.0 m

Jib point ..... 1 sheave (560 mm PCD) mounted on anti-friction bearings on jib top

Jib insert ..... 6.0 m long available

Connection type... Pin-connected

Auxiliary jib ..... Optional. Attachable to the main boom top to hoist the light load quickly with a single rope

**Note :** Boom insert, crane jib, or auxiliary jib can be attached to the basic boom when needed. However, both crane jib and auxiliary jib cannot be attached simultaneously to the boom.

### Tubular Chord Tower Crane Boom

1 500 mm wide by 1 500 mm deep at connection, lattice construction using high-tensile steel tubular chords

Tower boom length .. 27.0 m, minimum  
45.0 m, maximum

Tower inserts..... 3.0 m, 6.0 m and 9.0 m tower inserts are in common with crane boom inserts

Connection type..... Pin-connected

Tower backstop..... Dual-rail, telescopic tubular construction with spring damper

Tower hoist bridle.. Serves as connection between pendants and boom hoist wire rope reeving, equipped with 6 sheaves (420 mm PCD) for 12-part boom hoist wire rope reeving

### Tower Jib

1 150 mm wide by 1 150 mm deep at connection, lattice construction using high-tensile steel tubular chords

Jib length ..... 19.0 m to 37.0 m

Jib inserts..... 3.0 m, 6.0 m and 9.0 m long available

Connection type..... Pin-connected

Tower jib hoist bridle.. Serves as connection between tower boom pendants and tower boom hoist wire rope reeving, equipped with 4 sheaves (504 mm PCD) for 8-part tower jib hoist wire rope reeving



## Operator's Cab

All-weather, well-ventilated, roomy operator's cab with good visibility. The independent cab is insulated against noise and vibration. Sliding, fold-in windshield swings up and stores in roof. Adjustable reclining seat

## HYDRAULIC SYSTEM

- 3 variable displacement piston pumps allow both independent and combined operations of all functions.
- Variable displacement piston pumps control working speeds, and make effective use of engine horsepower.

	Pump-1	Pump-2
Type of pump	Variable displacement	
Pressure setting	29.4 MPa (300 kgf/cm <sup>2</sup> )	29.4 MPa (300 kgf/cm <sup>2</sup> )
Max. oil flow*	236 L/min	236 L/min
	Pump-3	Pump-4
Type of pump	Variable displacement	Gear
Pressure setting	27.5 MPa (280 kgf/cm <sup>2</sup> )	4.9 MPa (50 kgf/cm <sup>2</sup> )
Max. oil flow*	148 L/min	36 L/min

\* with non-loaded condition

### Main and Auxiliary Hoist Motors

Swashplate-type axial piston motors with counterbalance valves

### Boom Hoist Motor

Bent axis motor with counterbalance valve

### Swing Motor

Swashplate-type axial piston motor

### Travel Motors

Swashplate-type axial piston motors with brake valve and spring-set/hydraulic-released multiplate disc brake

### Relief and Brake Valves

- Each hydraulic circuit incorporates large-capacity relief valves to protect circuit from overload and shock load.
- Counterbalance valves, provided for hoist motor, compensate load lowering and prevent accidental load drop if hydraulic power is suddenly reduced.
- Brake valves (consisting of relief valve and counterbalance valve) are provided for travel circuit.

### Pressure Settings

#### Main Circuit

##### ●Main relief valves

Hoist (main and aux.) ..... 29.4 MPa (300 kgf/cm<sup>2</sup>)

Swing..... 25.5 MPa (260 kgf/cm<sup>2</sup>)

##### ●Overload relief valves

Hoist (main and aux.) circuits ..... 30.8 MPa (315 kgf/cm<sup>2</sup>)

Boom hoist circuit ..... 31.4 MPa (320 kgf/cm<sup>2</sup>)

Travel circuit ..... 29.4 MPa (300 kgf/cm<sup>2</sup>)

#### Pilot Circuit

●Main relief valve ..... 4.9 MPa ( 50 kgf/cm<sup>2</sup>)

### Line Filters

High-filtration 10 μm full-flow filter element is incorporated in the return line. Pilot filter and suction filter are provided in each circuit.

## UNDERCARRIAGE

### Traction mechanism

- Each track is driven by a swashplate-type axial piston motor through reduction gear. This mechanism allows counter-rotation of tracks for maneuverability in close quarters.
- When the lever is in neutral position, both hydraulic brake and spring-set/hydraulic-released multiplate disc brake are automatically applied for stopping.

### Track Frame

All-welded, stress-relieved, box-section construction

### Side Frames

Side frames of all-welded construction can be retracted for transportation.

### Self-Loading Device / Side Frame Removal Device (Optional)

With the self-loading device /side frame removal device, the basic machine can be jacked up and loaded on to a trailer, and both side frames can be removed. Travel motor piping is connected via self-seal couplings for quick disconnection.

### Track Shoes

Heat-treated alloy steel castings with induction-hardened roller path and driving lugs. Shoes are connected by induction-hardened steel pins.

No. of upper rollers (each side) .....	4
No. of lower rollers (each side) .....	10
No. of track shoes (each side) .....	55
Shoe width .....	850 mm



## CONTROLS

### Boom, Main and Auxiliary Hoist, Swing and Travel

Remote controlled hydraulic servo. Working speed can be precisely controlled according to lever stroke.

### ●Electric Accelerator Grip

Engine horsepower can be controlled according to job needs by electric finger-touch grip atop the swing lever, accelerator lever and accelerator pedal

### ●Monitor Telling Machine Conditions

With the monitor, the operator can check, at a glance, engine oil pressure, water temperature and fuel level, as well as levels of hydraulic oil, engine oil and coolant. The red light turns on and the buzzer sounds in the event of an abnormality.



# SAFETY DEVICES

# SERVICE REFILL CAPACITIES

## Boom Angle Indicator

Mechanical-type boom angle indicator is provided at boom foot.

## Counterbalance Valves (Brake Valves)

Counterbalance valves are each incorporated in travel motors, boom hoist motor, and main and auxiliary hoist motors. If the hydraulic line is broken, this valve is automatically actuated to prevent motor rotation.

## Spring-Set/Hydraulic-Released Multiplate Disc Type Travel Brakes

## Swing Lock and Swing Parking Brake

## Drum Locks (Electric Type)

A pawl-type drum locks, provided at main drum, auxiliary drum and boom drum, are automatically applied when the engine key is set to OFF or ACC position.

## Devices for Crane Operation

### ●Moment Limiter

On the moment limiter, analog displays and pictorial load indications are functionally arranged for easy reading.

### ●Hook Overhoist Prevention Device

When the hook reaches its hoist limit, the bell sounds and the auto-stop automatically actuates at the same time.

### ●Boom Overhoist Prevention Device

When the boom reaches its angle limit, the buzzer alarm sounds and boom hoisting automatically stops at the same time. The telescopic-type boom backstop is also provided.

### ●Secondary Boom Overhoist Prevention Device

In addition to the hook overhoist prevention device and boom overhoist prevention device, the secondary boom overhoist prevention device is provided. It actuates at a boom angle of 82° to avoid overhoisting of the boom and/or hook.

### ●Pilot Control Shut-off Lever

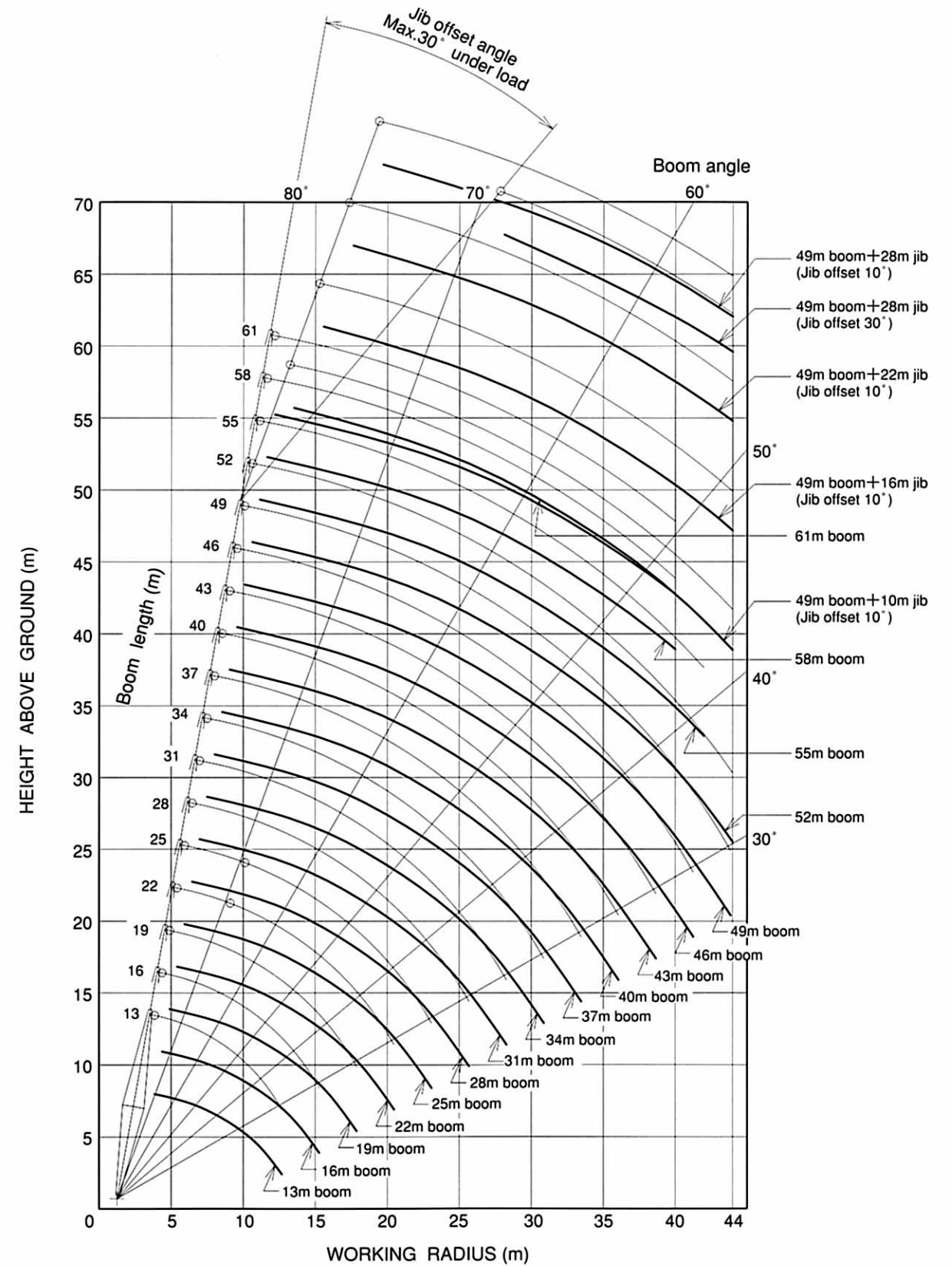
The pilot control shut-off lever shuts out the hydraulic pilot pressure to pilot control valves. With the pilot control shut-off lever in the LOCK position, the machine will not operate even if the lever is accidentally shifted.

### ●Fail-safe mechanism

The related movements stop automatically if an electric wire is broken or an electric device fails.

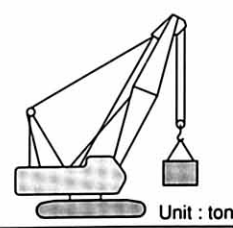
	Liter
Fuel tank.....	415
Engine coolant.....	47
Engine oil.....	45
Pump transmission.....	2
Boom hoist reduction device.....	10
Winch hoist reduction device.....	19.5 x 2
Swing reduction device.....	17 x 2
Travel final device.....	25 x 2
Hydraulic system, including tank capacity.....	335
Hydraulic tank.....	255

## Working Ranges



Note: Working ranges shown are under unloaded condition.

# 78% Tipping Load (JIS Rating)



## Crane Ratings (Main Boom in 360° Working Area)

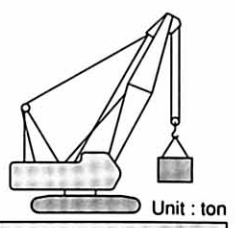
Working Radius (m)	Boom Length (m)									
	13	16	19	22	25	28	31	34	37	
4.0	90.00									
4.5	80.50	4.6m×78.45t								
5.0	70.80	70.60	5.1m×68.25t							
5.5	60.85	60.65	60.55	5.7m×57.25t						
6.0	53.35	53.10	53.00	52.95	6.2m×50.30t					
6.5	47.40	47.20	47.05	47.00	46.90	6.7m×44.00t				
7.0	42.65	42.40	42.25	42.20	42.10	42.05	7.3m×39.45t	7.8m×35.75t		
8.0	35.45	35.20	35.05	35.00	34.85	34.80	34.65	34.50	8.4m×32.15t	
9.0	30.25	30.00	29.85	29.75	29.65	29.55	29.40	29.30	29.25	
10.0	26.35	26.05	25.90	25.85	25.70	25.65	25.45	25.35	25.25	
12.0	20.60	20.55	20.35	20.30	20.15	20.05	19.90	19.75	19.70	
14.0	12.6m×18.40t	16.85	16.65	16.55	16.40	16.35	16.15	16.05	15.95	
16.0		15.2m×14.90t	14.05	13.90	13.75	13.70	13.50	13.35	13.30	
18.0			17.8m×12.25t	11.95	11.80	11.70	11.50	11.35	11.30	
20.0				10.40	10.25	10.15	9.95	9.80	9.70	
22.0				20.4m×10.15t	9.00	8.90	8.70	8.55	8.45	
24.0					23.0m×8.50t	7.90	7.70	7.55	7.45	
26.0						25.6m×7.20t	6.85	6.70	6.60	
28.0							6.15	6.00	5.90	
30.0							28.2m×6.10t	5.40	5.25	
32.0								30.8m×5.20t	4.75	
33.4									4.45	

Working Radius (m)	Boom Length (m)								
	40	43	46	49	52	55	58	61	
8.9	29.50								
9.0	29.05	9.5m×26.85t							
10.0	25.10	25.00	24.85	10.6m×22.00t	11.1m×21.25t	11.7m×19.60t			
12.0	19.55	19.40	19.25	19.20	19.05	18.90	12.2m×17.30t	12.8m×15.00t	
14.0	15.80	15.65	15.50	15.45	15.30	15.15	15.00	14.50	
16.0	13.10	12.95	12.85	12.75	12.60	12.45	12.30	12.15	
18.0	11.10	10.95	10.80	10.75	10.60	10.45	10.30	10.10	
20.0	9.55	9.40	9.25	9.15	9.05	8.90	8.70	8.55	
22.0	8.30	8.15	8.00	7.90	7.75	7.60	7.45	7.30	
24.0	7.25	7.10	6.95	6.90	6.75	6.60	6.40	6.25	
26.0	6.40	6.25	6.10	6.00	5.90	5.75	5.55	5.35	
28.0	5.70	5.55	5.40	5.30	5.15	4.95	4.75	4.50	
30.0	5.10	4.95	4.80	4.65	4.45	4.25	4.05	3.80	
32.0	4.55	4.40	4.20	4.05	3.85	3.65	3.45	3.20	
34.0	4.10	3.90	3.70	3.55	3.35	3.15	2.90	2.70	
36.0	3.65	3.45	3.25	3.05	2.90	2.70	2.45	2.25	
38.0		3.05	2.85	2.65	2.50	2.30	2.05	1.80	
40.0		38.6m×2.95t	2.50	2.30	2.10	1.90	1.70	39.7m×1.50t	
42.0			41.2m×2.30t	2.00	1.80	1.60	41.1m×1.50t		
44.0				43.8m×1.75t	1.50	42.6m×1.50t			

- Notes: 1. The rated loads shown do not exceed 78% of tipping load with the machine on firm level ground, and are not less than 1.15 times over-front stability stipulated by the mobile crane construction standards.  
 2. The load to be actually lifted will be the rated load shown minus the weight of all lifting attachments such as a hook.  
 3. Working radius is the horizontal distance from the swing center to the center of gravity of a lifted load.  
 4. The counterweight is 31.3 ton.  
 5. Be sure to fully extend the side frames before operating the machine.  
 6. Correlation among the number of rope reevings, maximum rated loads and hook weights are shown in the table below.

Hook Capacity (ton)	Hook Weight (ton)	Maximum Rated Load (ton)							
		8	7	6	5	4	3	2	1
90	0.97	90	77	66	55	44	-	-	-
45	0.62	-	-	-	-	44	33	22	-
22	0.60	-	-	-	-	-	-	22	-

# 75% Tipping Load (PCSA Rating)



## Crane Ratings (Main Boom in 360° Working Area)

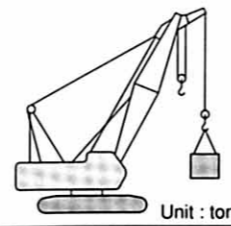
Working Radius (m)	Boom Length (m)									
	13	16	19	22	25	28	31	34	37	
4.0	90.00									
4.5	80.50	4.6m×78.45t								
5.0	68.55	68.40	5.1m×66.10t							
5.5	58.95	58.75	58.65	5.7m×55.45t						
6.0	51.65	51.45	51.30	51.25	6.2m×48.70t					
6.5	45.90	45.70	45.55	45.50	45.40	6.7m×43.40t				
7.0	41.30	41.05	40.95	40.90	40.80	40.70	7.3m×38.20t	7.8m×34.65t		
8.0	34.30	34.05	33.95	33.90	33.75	33.70	33.55	33.45	8.4m×31.15t	
9.0	29.30	29.05	28.90	28.85	28.70	28.65	28.50	28.35	28.30	
10.0	25.50	25.25	25.10	25.00	24.90	24.85	24.65	24.55	24.50	
12.0	20.20	19.90	19.75	19.65	19.50	19.45	19.30	19.15	19.10	
14.0	12.6m×18.40t	16.35	16.15	16.05	15.90	15.85	15.65	15.55	15.45	
16.0		15.2m×14.70t	13.60	13.50	13.35	13.25	13.10	12.95	12.90	
18.0			17.8m×11.85t	11.60	11.40	11.30	11.15	11.00	10.95	
20.0				10.10	9.90	9.80	9.65	9.50	9.45	
22.0				20.4m×9.85t	8.75	8.60	8.45	8.30	8.20	
24.0					23.0m×8.25t	7.65	7.45	7.30	7.25	
26.0						25.6m×7.00t	6.65	6.50	6.40	
28.0							5.95	5.80	5.70	
30.0							28.2m×5.90t	5.25	5.15	
32.0								30.8m×5.05t	4.60	
34.0									33.4m×4.30t	

Working Radius (m)	Boom Length (m)								
	40	43	46	49	52	55	58	61	
8.0	8.9m×28.60t								
9.0	28.15	9.5m×26.00t							
10.0	24.35	24.20	24.10	10.6m×22.00t	11.1m×20.60t	11.7m×19.00t			
12.0	18.95	18.80	18.65	18.60	18.45	18.35	12.2m×17.30t	12.8m×15.00t	
14.0	15.30	15.15	15.05	14.95	14.85	14.70	14.55	14.40	
16.0	12.70	12.60	12.45	12.35	12.25	12.10	11.95	11.80	
18.0	10.75	10.65	10.50	10.40	10.30	10.15	10.00	9.80	
20.0	9.25	9.10	8.95	8.90	8.75	8.60	8.45	8.30	
22.0	8.05	7.90	7.75	7.70	7.55	7.40	7.25	7.05	
24.0	7.05	6.90	6.75	6.70	6.55	6.40	6.25	6.05	
26.0	6.25	6.10	5.95	5.85	5.70	5.55	5.40	5.25	
28.0	5.55	5.40	5.25	5.15	5.00	4.85	4.70	4.50	
30.0	4.95	4.80	4.65	4.55	4.40	4.25	4.05	3.80	
32.0	4.45	4.30	4.15	4.05	3.85	3.65	3.45	3.20	
34.0	4.00	3.85	3.70	3.55	3.35	3.15	2.90	2.70	
36.0	3.60	3.45	3.25	3.05	2.90	2.70	2.45	2.25	
38.0		3.05	2.85	2.65	2.50	2.30	2.05	1.80	
40.0		38.6m×2.95t	2.50	2.30	2.10	1.90	1.70	39.7m×1.50t	
42.0			41.2m×2.30t	2.00	1.80	1.60	41.1m×1.50t		
44.0				43.8m×1.75t	1.50	42.6m×1.50t			

- Notes: 1. The rated loads shown do not exceed 75% of tipping load with the machine on firm level ground.  
 2. The load to be actually lifted will be the rated load shown minus the weight of all lifting attachments such as a hook.  
 3. Working radius is the horizontal distance from the swing center to the center of gravity of a lifted load.  
 4. The counterweight is 31.3 ton.  
 5. Be sure to fully extend the side frames before operating the machine.  
 6. Correlation among the number of rope reevings, maximum rated loads and hook weights are shown in the table below.

Hook Capacity (ton)	Hook Weight (ton)	Maximum Rated Load (ton)							
		8	7	6	5	4	3	2	1
90	0.97	90	77	66	55	44	-	-	-
45	0.62	-	-	-	-	44	33	22	-
22	0.60	-	-	-	-	-	-	22	-

# 78% Tipping Load (JIS Rating)



## Crane Ratings (Auxiliary Jib in 360° Working Area)

Working Radius (m)	Boom Length (m)							
	13	16	19	22	25	28	31	34
4.8	11.00							
5.0	11.00	5.3m×11.00t						
5.5	11.00	11.00	5.9m×11.00t					
6.0	11.00	11.00	11.00	6.4m×11.00t				
6.5	11.00	11.00	11.00	11.00				
7.0	11.00	11.00	11.00	11.00	11.00	7.5m×11.00t		
8.0	11.00	11.00	11.00	11.00	11.00	11.00	11.00	8.6m×11.00t
9.0	11.00	11.00	11.00	11.00	11.00	11.00	11.00	11.00
10.0	11.00	11.00	11.00	11.00	11.00	11.00	11.00	11.00
12.0	11.00	11.00	11.00	11.00	11.00	11.00	11.00	11.00
14.0	11.00	11.00	11.00	11.00	11.00	11.00	11.00	11.00
16.0		11.00	11.00	11.00	11.00	11.00	11.00	11.00
18.0		16.6m×11.00t	11.00	11.00	11.00	11.00	11.00	11.00
20.0			19.2m×10.95t	10.25	10.05	9.95	9.75	9.60
22.0				21.8m×9.15t	8.80	8.70	8.50	8.35
24.0					7.80	7.70	7.50	7.30
26.0					24.4m×7.65t	6.85	6.65	6.45
28.0						27.0m×6.50t	5.95	5.75
30.0							29.6m×5.45t	5.15
32.0								4.65
32.2								4.60

Working Radius (m)	Boom Length (m)						
	37	40	43	46	49	52	55
9.1	11.00	9.7m×11.00t					
10.0	11.00	11.00	10.2m×11.00t	10.8m×11.00t	11.3m×11.00t	11.9m×11.00t	
12.0	11.00	11.00	11.00	11.00	11.00	11.00	12.4m×11.00t
14.0	11.00	11.00	11.00	11.00	11.00	11.00	11.00
16.0	11.00	11.00	11.00	11.00	11.00	11.00	11.00
18.0	11.00	10.90	10.75	10.60	10.50	10.35	10.20
20.0	9.50	9.30	9.15	9.00	8.95	8.80	8.65
22.0	8.25	8.05	7.90	7.75	7.65	7.50	7.35
24.0	7.20	7.05	6.90	6.70	6.65	6.45	6.30
26.0	6.35	6.20	6.00	5.85	5.75	5.60	5.45
28.0	5.65	5.45	5.30	5.15	5.00	4.80	4.60
30.0	5.05	4.85	4.65	4.45	4.30	4.10	3.90
32.0	4.50	4.30	4.05	3.85	3.70	3.50	3.30
34.0	4.00	3.75	3.55	3.35	3.20	3.00	2.80
36.0	34.8m×3.85t	3.30	3.10	2.90	2.75	2.55	2.30
38.0		37.4m×3.05t	2.70	2.50	2.30	2.10	1.90
40.0			2.35	2.15	1.95	1.75	1.55
42.0				1.85	1.65	41.6m×1.50t	40.2m×1.50t
42.6				1.75			

Notes: 1. The rated loads shown do not exceed 78% of tipping load with the machine on firm level ground, and are not less than 1.15 times over-front stability stipulated by the mobile crane construction standards.

2. The load to be actually lifted will be the rated load shown minus the weight of all lifting attachments such as a hook.

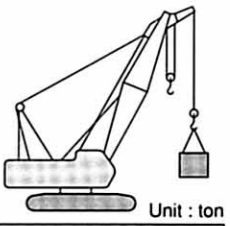
Hook Capacity (ton)	Hook Weight (ton)
90	0.97
45	0.62
22	0.60
11	0.37

3. Working radius is the horizontal distance from the swing center to the center of gravity of a lifted load.

4. The counterweight is 31.3ton.

5. Be sure to fully extend the side frames before operating the machine.

# 75% Tipping Load (PCSA Rating)



## Crane Ratings (Auxiliary Jib in 360° Working Area)

Working Radius (m)	Boom Length (m)							
	13	16	19	22	25	28	31	34
4.8	11.00							
5.0	11.00	5.3m×11.00t						
5.5	11.00	11.00	5.9m×11.00t					
6.0	11.00	11.00	11.00	6.4m×11.00t				
6.5	11.00	11.00	11.00	11.00				
7.0	11.00	11.00	11.00	11.00	11.00	7.5m×11.00t		
8.0	11.00	11.00	11.00	11.00	11.00	11.00	11.00	8.6m×11.00t
9.0	11.00	11.00	11.00	11.00	11.00	11.00	11.00	11.00
10.0	11.00	11.00	11.00	11.00	11.00	11.00	11.00	11.00
12.0	11.00	11.00	11.00	11.00	11.00	11.00	11.00	11.00
14.0	11.00	11.00	11.00	11.00	11.00	11.00	11.00	11.00
16.0		11.00	11.00	11.00	11.00	11.00	11.00	11.00
18.0		16.6m×11.00t	11.00	11.00	11.00	11.00	10.95	10.85
20.0			19.2m×10.60t	9.95	9.75	9.65	9.45	9.30
22.0				21.8m×8.85t	8.55	8.45	8.25	8.10
24.0					7.60	7.45	7.25	7.10
26.0					24.4m×7.40t	6.65	6.45	6.30
28.0						27.0m×6.30t	5.75	5.60
30.0							29.6m×5.30t	5.00
32.0								4.50
34.0								32.2m×4.45t

Working Radius (m)	Boom Length (m)						
	37	40	43	46	49	52	55
9.0	9.1m×11.00t	9.7m×11.00t					
10.0	11.00	11.00	10.2m×11.00t	10.8m×11.00t	11.3m×11.00t	11.9m×11.00t	
12.0	11.00	11.00	11.00	11.00	11.00	11.00	12.4m×11.00t
14.0	11.00	11.00	11.00	11.00	11.00	11.00	11.00
16.0	11.00	11.00	11.00	11.00	11.00	11.00	11.00
18.0	10.75	10.60	10.45	10.30	10.20	10.05	9.90
20.0	9.25	9.05	8.90	8.75	8.65	8.55	8.40
22.0	8.00	7.85	7.70	7.55	7.45	7.30	7.15
24.0	7.00	6.85	6.70	6.55	6.45	6.30	6.15
26.0	6.20	6.00	5.85	5.70	5.60	5.45	5.30
28.0	5.50	5.30	5.15	5.00	4.90	4.75	4.60
30.0	4.90	4.70	4.55	4.40	4.30	4.10	3.90
32.0	4.40	4.20	4.05	3.85	3.70	3.50	3.30
34.0	3.95	3.75	3.55	3.35	3.20	3.00	2.80
36.0	34.8m×3.80t	3.30	3.10	2.90	2.75	2.55	2.30
38.0		37.4m×3.05t	2.70	2.50	2.30	2.10	1.90
40.0			2.35	2.15	1.95	1.75	1.55
42.0				1.85	1.65	41.6m×1.50t	40.2m×1.50t
42.6				1.75			

Notes: 1. The rated loads shown do not exceed 75% of tipping load with the machine on firm level ground.

2. The load to be actually lifted will be the rated load shown minus the weight of all lifting attachments such as a hook.

Hook Capacity (ton)	Hook Weight (ton)
90	0.97
45	0.62
22	0.60
11	0.37

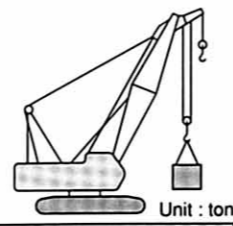
3. Working radius is the horizontal distance from the swing center to the center of gravity of a lifted load.

4. The counterweight is 31.3 ton.

5. Be sure to fully extend the side frames before operating the machine.



# 78% Tipping Load (JIS Rating)



## Crane Ratings (Main boom with Auxiliary Jib in 360° Working Area)

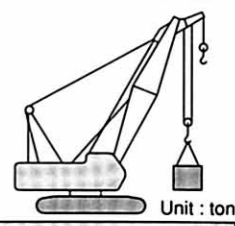
Working Radius (m)	Boom Length (m)							
	13	16	19	22	25	28	31	34
4.0	89.65							
4.5	80.15	4.6m×78.10t						
5.0	70.40	70.20	5.1m×67.90t					
5.5	60.50	60.25	60.15	5.7m×56.85t				
6.0	52.95	52.70	52.60	52.55	6.2m×49.90t			
6.5	47.05	46.80	46.65	46.60	46.50	6.7m×44.00t		
7.0	42.25	42.00	41.90	41.80	41.70	41.65	7.3m×39.00t	7.8m×35.35t
8.0	35.05	34.80	34.65	34.60	34.45	34.40	34.20	34.10
9.0	29.90	29.60	29.45	29.40	29.25	29.20	29.00	28.85
10.0	25.95	25.70	25.55	25.45	25.30	25.25	25.05	24.90
12.0	20.10	20.15	20.00	19.90	19.75	19.65	19.50	19.35
14.0	12.6m×17.95t	16.50	16.30	16.20	16.05	15.95	15.75	15.60
16.0		15.2m×14.40t	13.70	13.55	13.40	13.30	13.10	12.95
18.0			17.8m×11.85t	11.60	11.40	11.30	11.10	10.95
20.0				10.05	9.85	9.75	9.55	9.40
22.0				20.4m×9.80t	8.65	8.50	8.30	8.15
24.0					23.0m×8.15t	7.55	7.30	7.15
26.0						25.6m×6.85t	6.50	6.30
28.0							5.80	5.60
30.0							28.2m×5.75t	5.00
30.8								4.80

Working Radius (m)	Boom Length (m)						
	37	40	43	46	49	52	55
8.4	31.75	8.9m×29.10t					
9.0	28.80	28.65	9.5m×26.40t				
10.0	24.85	24.70	24.55	24.40	10.6m×22.00t	11.1m×20.80t	11.7m×19.15t
12.0	19.30	19.10	18.95	18.80	18.75	18.60	18.45
14.0	15.55	15.35	15.20	15.05	15.00	14.85	14.70
16.0	12.90	12.70	12.55	12.40	12.30	12.15	12.00
18.0	10.85	10.70	10.55	10.35	10.30	10.15	10.00
20.0	9.30	9.10	8.95	8.80	8.70	8.55	8.40
22.0	8.05	7.85	7.70	7.55	7.45	7.30	7.15
24.0	7.05	6.85	6.70	6.55	6.45	6.30	6.15
26.0	6.20	6.00	5.85	5.70	5.60	5.45	5.25
28.0	5.50	5.30	5.15	4.95	4.85	4.70	4.55
30.0	4.90	4.70	4.55	4.35	4.25	4.10	3.95
32.0	4.40	4.15	4.00	3.85	3.70	3.55	3.40
34.0	33.4m×4.00t	3.70	3.55	3.35	3.25	3.10	2.95
36.0		3.20	3.15	2.95	2.85	2.70	2.50
38.0			2.65	2.60	2.50	2.35	2.15
40.0			38.6m×2.50t	2.15	2.15	2.00	1.85
42.0				41.2m×1.85t	1.70	1.65	1.55
44.0					42.8m×1.50t	42.7m×1.50t	42.2m×1.50t

- Notes: 1. The rated loads shown do not exceed 78% of tipping load with the machine on firm level ground, and are not less than 1.15 times over-front stability stipulated by the mobile crane construction standards.  
 2. The load to be actually lifted will be the rated load shown minus the weight of all lifting attachments such as a hook.  
 Auxiliary hook Hook capacity : 11 ton Hook weight : 0.37 ton  
 3. Working radius is the horizontal distance from the swing center to the center of gravity of a lifted load.  
 4. The counterweight is 31.3 ton.  
 5. Be sure to fully extend the side frames before operating the machine.  
 6. Correlation among the number of rope reevings, maximum rated loads and hook weights are shown in the table below.

Hook Capacity (ton)	Hook Weight (ton)	Maximum Rated Load (ton)							
		8	7	6	5	4	3	2	1
90	0.97	90	77	66	55	44	-	-	-
45	0.62	-	-	-	-	44	33	22	-
22	0.60	-	-	-	-	-	-	22	-

# 75% Tipping Load (PCSA Rating)



## Crane Ratings (Main boom with Auxiliary Jib in 360° Working Area)

Working Radius (m)	Boom Length (m)							
	13	16	19	22	25	28	31	34
4.0	89.65							
4.5	80.15	4.6m×78.10t						
5.0	68.20	68.00	5.1m×65.75t					
5.5	58.60	58.35	58.25	5.7m×55.05t				
6.0	51.30	51.05	50.95	50.90	6.2m×48.30t			
6.5	45.55	45.35	45.20	45.15	45.05	6.7m×43.00t		
7.0	40.95	40.70	40.55	40.50	40.40	40.35	7.3m×37.80t	7.8m×34.25t
8.0	33.95	33.70	33.60	33.50	33.40	33.30	33.15	33.05
9.0	28.95	28.70	28.55	28.45	28.35	28.25	28.10	27.95
10.0	25.15	24.90	24.75	24.65	24.55	24.45	24.30	24.15
12.0	19.85	19.55	19.40	19.30	19.15	19.05	18.90	18.75
14.0	12.6m×17.95t	16.00	15.80	15.70	15.55	15.45	15.30	15.15
16.0		15.2m×14.40t	13.25	13.15	13.00	12.90	12.70	12.55
18.0			17.8m×11.55t	11.25	11.05	10.95	10.75	10.65
20.0				9.75	9.60	9.45	9.25	9.10
22.0				20.4m×9.50t	8.40	8.25	8.05	7.90
24.0					23.0m×7.90t	7.30	7.10	6.95
26.0						25.6m×6.65t	6.30	6.15
28.0							5.65	5.45
30.0							28.2m×5.55t	4.90
32.0								30.8m×4.70t

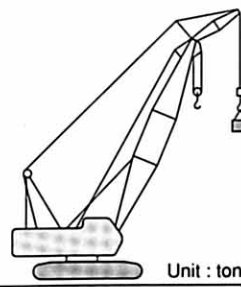
Working Radius (m)	Boom Length (m)						
	37	40	43	46	49	52	55
8.0	8.4m×30.75t	8.9m×28.20t					
9.0	27.90	27.75	9.5m×25.60t				
10.0	24.10	23.90	23.80	23.65	10.6m×21.70t	11.1m×20.15t	11.7m×18.55t
12.0	18.70	18.50	18.40	18.25	18.15	18.05	17.90
14.0	15.05	14.90	14.75	14.60	14.55	14.40	14.25
16.0	12.50	12.30	12.15	12.00	11.95	11.80	11.65
18.0	10.55	10.35	10.20	10.05	10.00	9.85	9.70
20.0	9.05	8.85	8.70	8.55	8.45	8.30	8.15
22.0	7.85	7.65	7.50	7.35	7.25	7.10	6.95
24.0	6.85	6.65	6.50	6.35	6.25	6.10	5.95
26.0	6.05	5.85	5.70	5.55	5.45	5.30	5.15
28.0	5.35	5.15	5.00	4.85	4.75	4.60	4.45
30.0	4.75	4.55	4.40	4.25	4.15	4.00	3.85
32.0	4.25	4.05	3.90	3.75	3.65	3.45	3.30
34.0	33.4m×3.95t	3.60	3.45	3.30	3.20	3.00	2.85
36.0		3.20	3.05	2.90	2.80	2.65	2.45
38.0			2.65	2.55	2.45	2.30	2.10
40.0			38.6m×2.50t	2.15	2.15	1.95	1.80
42.0				41.2m×1.85t	1.70	1.65	1.55
44.0					42.8m×1.50t	42.7m×1.50t	42.2m×1.50t

- Notes: 1. The rated loads shown do not exceed 75% of tipping load with the machine on firm level ground.  
 2. The load to be actually lifted will be the rated load shown minus the weight of all lifting attachments such as a hook.  
 Auxiliary hook Hook capacity : 11 ton Hook weight : 0.37 ton  
 3. Working radius is the horizontal distance from the swing center to the center of gravity of a lifted load.  
 4. The counterweight is 31.3 ton.  
 5. Be sure to fully extend the side frames before operating the machine.  
 6. Correlation among the number of rope reevings, maximum rated loads and hook weights are shown in the table below.

Hook Capacity (ton)	Hook Weight (ton)	Maximum Rated Load (ton)							
		8	7	6	5	4	3	2	1
90	0.97	90	77	66	55	44	-	-	-
45	0.62	-	-	-	-	44	33	22	-
22	0.60	-	-	-	-	-	-	22	-



# 78% Tipping Load (JIS Rating)



## Crane Ratings ( Jib in 360° Working Area) (1)

Main Boom Length (m)	34							
Jib Boom Length (m)	10		16		22		28	
Offset Angle (°)	10	30	10	30	10	30	10	30
Working Radius (m)								
11.3	11.00							
12.0	11.00		13.4m×11.00t					
14.0	11.00	14.3m×11.00t	11.00		15.5m×9.20t			
16.0	11.00	10.60	11.00		9.05		17.6m×5.05t	
18.0	11.00	10.20	11.00	18.2m×8.55t	8.65		5.00	
20.0	9.95	9.80	10.20	8.20	8.30		4.70	
22.0	8.65	8.95	8.90	7.80	7.95	22.1m×6.25t	4.50	
24.0	7.60	7.90	7.85	7.45	7.65	5.90	4.30	
26.0	6.70	6.95	6.95	7.15	7.10	5.60	4.10	3.25
28.0	6.00	6.20	6.20	6.55	6.35	5.35	3.90	3.15
30.0	5.35	5.50	5.55	5.85	5.70	5.10	3.75	3.05
32.0	4.80	4.95	5.00	5.25	5.15	4.90	3.60	3.00
34.0	4.35	4.45	4.50	4.75	4.65	4.70	3.45	2.90
36.0	3.90	4.00	4.10	4.30	4.20	4.50	3.35	2.85
38.0	3.55	3.60	3.70	3.90	3.80	4.10	3.25	2.75
40.0	3.25	3.25	3.35	3.50	3.50	3.75	3.15	2.70
42.0	40.6m×3.05t	41.2m×3.00t	3.05	3.20	3.15	3.40	3.05	2.65
44.0			2.80	2.90	2.90	3.10	2.95	2.60
46.0			2.45	2.60	2.65	2.80	2.70	2.55
48.0			46.3m×2.35t	47.2m×2.30t	2.40	2.55	2.50	2.55
50.0					2.20	2.30	2.25	2.45
52.0					51.9m×1.80t	2.05	2.10	2.25
54.0						53.2m×1.75t	1.90	2.05
56.0							1.60	1.85
58.0							56.5m×1.50t	1.55
58.5								58.2m×1.50t

Main Boom Length (m)	37							
Jib Boom Length (m)	10		16		22		28	
Offset Angle (°)	10	30	10	30	10	30	10	30
Working Radius (m)								
11.3	11.9m×11.00t							
12.0	11.00							
14.0	11.00	14.9m×10.95t	11.00					
16.0	11.00	10.70	11.00		16.1m×9.15t			
18.0	11.00	10.30	11.00	18.8m×8.55t	8.80		18.2m×5.00t	
20.0	9.85	9.95	10.10	8.30	8.40		4.80	
22.0	8.55	8.90	8.80	7.90	8.05	22.7m×6.20t	4.55	
24.0	7.50	7.80	7.70	7.60	7.75	6.00	4.35	
26.0	6.60	6.90	6.85	7.25	7.00	5.70	4.15	26.6m×3.25t
28.0	5.85	6.10	6.10	6.45	6.25	5.45	4.00	3.20
30.0	5.25	5.45	5.45	5.80	5.60	5.20	3.85	3.10
32.0	4.70	4.85	4.90	5.20	5.00	5.00	3.70	3.00
34.0	4.20	4.35	4.40	4.65	4.55	4.80	3.55	2.95
36.0	3.80	3.90	3.95	4.20	4.10	4.45	3.45	2.85
38.0	3.40	3.50	3.60	3.80	3.70	4.05	3.30	2.80
40.0	3.10	3.15	3.25	3.40	3.35	3.65	3.20	2.75
42.0	2.80	2.85	2.95	3.10	3.05	3.30	3.10	2.70
44.0	43.2m×2.50t	43.8m×2.40t	2.65	2.80	2.75	3.00	2.85	2.65
46.0			2.40	2.50	2.50	2.70	2.60	2.60
48.0			2.10	2.25	2.30	2.45	2.35	2.55
50.0			48.9m×1.90t	49.8m×1.85t	2.10	2.20	2.15	2.40
52.0					1.85	2.00	1.95	2.15
54.0					1.50	1.75	1.75	1.95
56.0						55.1m×1.50t	1.55	1.75
58.0							56.4m×1.50t	1.60
58.5								1.50

Notes: 1. The rated loads shown do not exceed 78% of tipping load with the machine on firm level ground, and are not less than 1.15 times over-front stability stipulated by the mobile crane construction standards.

2. The load to be actually lifted will be the rated load shown minus the weight of all lifting attachments such as a hook.

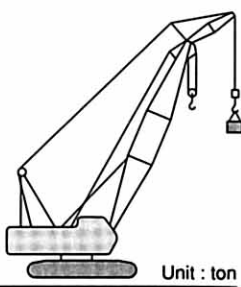
Hook Capacity (ton)	Hook Weight (ton)
90	0.97
45	0.62
22	0.60
11	0.37

3. Working radius is the horizontal distance from the swing center to the center of gravity of a lifted load.

4. The counterweight is 31.3 ton.

5. Be sure to fully extend the side frames before operating the machine.

# 78% Tipping Load (JIS Rating)



## Crane Ratings ( Jib in 360° Working Area) (2)

Main Boom Length (m)	40							
Jib Boom Length (m)	10		16		22		28	
Offset Angle (°)	10	30	10	30	10	30	10	30
Working Radius (m)								
12.4	11.00							
14.0	11.00	15.4m×10.95t	14.5m×11.00t					
16.0	11.00	10.85	11.00		16.6m×9.15t			
18.0	11.00	10.45	11.00	19.3m×8.50t	8.90		18.7m×5.00t	
20.0	9.65	10.10	9.95	8.40	8.55		4.85	
22.0	8.35	8.75	8.65	8.05	8.20	23.2m×6.20t	4.65	
24.0	7.30	7.65	7.55	7.70	7.75	6.10	4.45	
26.0	6.45	6.70	6.65	7.15	6.85	5.80	4.25	27.1m×3.25t
28.0	5.70	5.95	5.90	6.35	6.10	5.55	4.05	3.20
30.0	5.05	5.25	5.25	5.65	5.40	5.30	3.90	3.10
32.0	4.50	4.70	4.70	5.05	4.85	5.10	3.75	3.05
34.0	4.00	4.20	4.20	4.50	4.35	4.80	3.65	2.95
36.0	3.60	3.75	3.80	4.05	3.90	4.30	3.50	2.90
38.0	3.25	3.35	3.40	3.65	3.55	3.90	3.40	2.80
40.0	2.90	3.00	3.05	3.25	3.20	3.50	3.30	2.75
42.0	2.60	2.65	2.75	2.95	2.90	3.15	2.95	2.70
44.0	2.30	2.40	2.50	2.65	2.60	2.85	2.70	2.65
46.0	45.8m×1.85t	1.90	2.25	2.35	2.35	2.55	2.45	2.60
48.0		46.4m×1.80t	2.00	2.10	2.10	2.30	2.20	2.50
50.0			1.65	1.85	1.90	2.05	2.00	2.25
52.0			50.7m×1.50t	51.5m×1.50t	1.70	1.85	1.80	2.00
54.0					53.3m×1.50t	1.65	1.60	1.80
56.0						55.0m×1.50t	55.3m×1.50t	1.60
57.3								1.50

Main Boom Length (m)	43							
Jib Boom Length (m)	10		16		22		28	
Offset Angle (°)	10	30	10	30	10	30	10	30
Working Radius (m)								
12.4	13.0m×11.00t							
14.0	11.00		15.1m×11.00t					
16.0	11.00	10.95	11.00		17.2m×9.15t			
18.0	11.00	10.55	11.00	19.9m×8.50t	9.00		19.3m×5.00t	
20.0	9.50	10.00	9.80	8.50	8.65		4.90	
22.0	8.20	8.65	8.50	8.15	8.30	23.8m×6.20t	4.70	
24.0	7.15	7.50	7.40	7.80	7.60	6.15	4.50	
26.0	6.30	6.60	6.50	7.05	6.70	5.90	4.30	27.7m×3.25t
28.0	5.55	5.80	5.75	6.20	5.95	5.60	4.15	3.20
30.0	4.90	5.15	5.10	5.50	5.30	5.40	4.00	3.15
32.0	4.35	4.55	4.55	4.90	4.70	5.20	3.85	3.05
34.0	3.85	4.05	4.05	4.40	4.20	4.70	3.70	2.95
36.0	3.45	3.60	3.60	3.90	3.75	4.20	3.55	2.90
38.0	3.05	3.20	3.25	3.50	3.40	3.80	3.45	2.85
40.0	2.75	2.85	2.90	3.15	3.05	3.40	3.15	2.80
42.0	2.45	2.50	2.60	2.80	2.70	3.05	2.80	2.75
44.0	2.15	2.25	2.30	2.50	2.45	2.75	2.55	2.70
46.0	1.85	1.95	2.05	2.20	2.20	2.45	2.30	2.65
48.0	47.5m×1.50t	1.50	1.85	1.95	1.95	2.20	2.05	2.35
50.0			1.60	1.75	1.75	1.95	1.85	2.15
52.0			50.5m×1.50t	51.6m×1.50t	1.55	1.75	1.65	1.90
54.0					52.4m×1.50t	1.50	53.5m×1.50t	1.70
56.0								1.50
57.3								1.50

Notes: 1. The rated loads shown do not exceed 78% of tipping load with the machine on firm level ground, and are not less than 1.15 times over-front stability stipulated by the mobile crane construction standards.

2. The load to be actually lifted will be the rated load shown minus the weight of all lifting attachments such as a hook.

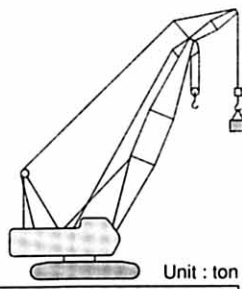
Hook Capacity (ton)	Hook Weight (ton)
90	0.97
45	0.62
22	0.60
11	0.37

3. Working radius is the horizontal distance from the swing center to the center of gravity of a lifted load.

4. The counterweight is 31.3 ton.

5. Be sure to fully extend the side frames before operating the machine.

# 78% Tipping Load (JIS Rating)



## Crane Ratings (Jib in 360° Working Area) (3)

Main Boom Length (m)	46							
Jib Boom Length (m)	10		16		22		28	
Offset Angle (°)	10	30	10	30	10	30	10	30
Working Radius (m)								
13.5	11.00							
14.0	11.00		15.6m×11.00t					
16.0	11.00	16.5m×10.95t	11.00		17.7m×9.15t			
18.0	11.00	10.65	11.00		9.10		19.8m×5.00t	
20.0	9.35	9.85	9.65	20.4m×8.50t	8.75		4.95	
22.0	8.05	8.50	8.35	8.20	8.40		4.75	
24.0	7.00	7.40	7.25	7.90	7.45	24.3m×6.20t	4.55	
26.0	6.10	6.45	6.35	6.90	6.55	5.95	4.35	
28.0	5.35	5.65	5.60	6.10	5.80	5.70	4.20	28.2m×3.20t
30.0	4.75	5.00	4.95	5.40	5.15	5.45	4.05	3.15
32.0	4.20	4.40	4.40	4.80	4.55	5.15	3.90	3.05
34.0	3.70	3.90	3.90	4.25	4.05	4.60	3.75	3.00
36.0	3.25	3.45	3.45	3.80	3.60	4.10	3.65	2.95
38.0	2.90	3.05	3.10	3.40	3.25	3.65	3.35	2.85
40.0	2.55	2.70	2.75	3.00	2.90	3.25	3.00	2.80
42.0	2.25	2.40	2.45	2.65	2.55	2.90	2.70	2.75
44.0	2.00	2.10	2.15	2.35	2.30	2.60	2.40	2.70
46.0	1.75	1.85	1.90	2.10	2.05	2.30	2.15	2.55
48.0	47.2m×1.50t	1.50	1.70	1.85	1.80	2.05	1.90	2.25
50.0			49.5m×1.50t	1.60	1.60	1.80	1.70	2.00
52.0				50.7m×1.50t	51.0m×1.50t	1.60	1.50	1.80
54.0						53.0m×1.50t		1.55
54.6								1.50

Unit : ton

Main Boom Length (m)	49							
Jib Boom Length (m)	10		16		22		28	
Offset Angle (°)	10	30	10	30	10	30	10	30
Working Radius (m)								
13.5								
14.0	14.1m×11.00t							
16.0	11.00	17.1m×10.95t	16.2m×11.00t					
18.0	10.90	10.75	11.00		18.3m×9.15t			
20.0	9.25	9.80	9.55	21.0m×8.20t	8.85		20.4m×5.00t	
22.0	7.95	8.45	8.25	8.00	8.45		4.80	
24.0	6.90	7.30	7.15	7.65	7.35	24.9m×6.15t	4.60	
26.0	6.00	6.40	6.25	6.85	6.45	6.00	4.45	
28.0	5.25	5.60	5.50	6.05	5.70	5.75	4.25	28.8m×3.20t
30.0	4.65	4.90	4.85	5.35	5.05	5.50	4.10	3.15
32.0	4.05	4.30	4.30	4.70	4.45	5.05	3.95	3.10
34.0	3.60	3.80	3.80	4.20	3.95	4.50	3.85	3.00
36.0	3.15	3.35	3.35	3.70	3.50	4.00	3.65	2.95
38.0	2.80	2.95	2.95	3.30	3.10	3.60	3.25	2.90
40.0	2.45	2.60	2.60	2.90	2.75	3.20	2.90	2.85
42.0	2.15	2.25	2.30	2.55	2.45	2.85	2.55	2.75
44.0	1.85	2.00	2.05	2.25	2.15	2.50	2.30	2.70
46.0	1.60	1.70	1.80	2.00	1.90	2.25	2.00	2.45
48.0	46.6m×1.50t	47.5m×1.50t	1.55	1.75	1.70	1.95	1.80	2.15
50.0			48.5m×1.50t	1.50	49.5m×1.50t	1.70	1.55	1.90
52.0						1.50	50.5m×1.50t	1.70
54.0								1.50
54.6								

Notes: 1. The rated loads shown do not exceed 78% of tipping load with the machine on firm level ground, and are not less than 1.15 times over-front stability stipulated by the mobile crane construction standards.

2. The load to be actually lifted will be the rated load shown minus the weight of all lifting attachments such as a hook.

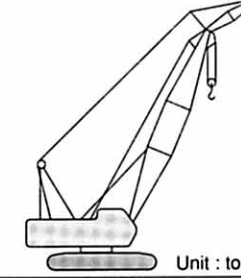
Hook Capacity (ton)	Hook Weight (ton)
90	0.97
45	0.62
22	0.60
11	0.37

3. Working radius is the horizontal distance from the swing center to the center of gravity of a lifted load.

4. The counterweight is 31.3 ton.

5. Be sure to fully extend the side frames before operating the machine.

# 78% Tipping Load (JIS Rating)



## Crane Ratings (Jib in 360° Working Area) (4)

Main Boom Length (m)	52			
Jib Boom Length (m)	10		16	
Offset Angle (°)	10	30	10	30
Working Radius (m)				
14.6	11.00			
16.0	11.00	17.6m×10.20t	16.7m×11.00t	
18.0	10.75	10.10	11.00	
20.0	9.10	9.60	9.40	21.5m×7.10t
22.0	7.80	8.30	8.10	7.00
24.0	6.75	7.20	7.00	6.70
26.0	5.85	6.25	6.10	6.40
28.0	5.10	5.45	5.35	5.90
30.0	4.45	4.80	4.70	5.20
32.0	3.90	4.20	4.15	4.60
34.0	3.45	3.65	3.65	4.05
36.0	3.00	3.20	3.20	3.60
38.0	2.60	2.80	2.80	3.15
40.0	2.30	2.45	2.45	2.80
42.0	2.00	2.15	2.15	2.45
44.0	1.70	1.85	1.90	2.15
46.0	45.5m×1.50t	1.55	1.60	1.85
48.0		46.5m×1.50t	47.0m×1.50t	1.60
50.0				48.7m×1.50t

Notes: 1. The rated loads shown do not exceed 78% of tipping load with the machine on firm level ground, and are not less than 1.15 times over-front stability stipulated by the mobile crane construction standards.

2. The load to be actually lifted will be the rated load shown minus the weight of all lifting attachments such as a hook.

Hook Capacity (ton)	Hook Weight (ton)
90	0.97
45	0.62
22	0.60
11	0.37

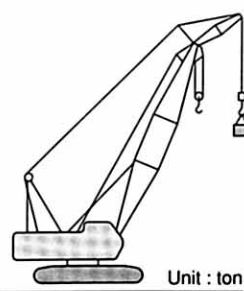
3. Working radius is the horizontal distance from the swing center to the center of gravity of a lifted load.

4. The counterweight is 31.3 ton.

5. Be sure to fully extend the side frames before operating the machine.



# 75% Tipping Load (PCSA Rating)



## Crane Ratings ( Jib in 360° Working Area) (1)

Main Boom Length (m)	34							
Jib Boom Length (m)	10		16		22		28	
Offset Angle (°)	10	30	10	30	10	30	10	30
Working Radius (m)								
11.3	11.00							
12.0	11.00		13.4m×11.00t					
14.0	11.00	14.3m×11.00t	11.00		15.5m×9.20t			
16.0	11.00	10.60	11.00		9.05		17.6m×5.05t	
18.0	11.00	10.20	11.00	18.2m×8.55t	8.65		5.00	
20.0	9.65	9.80	9.90	8.20	8.30		4.70	
22.0	8.40	8.70	8.65	7.80	7.95	22.1m×6.25t	4.50	
24.0	7.40	7.65	7.60	7.45	7.65		4.30	
26.0	6.55	6.75	6.75	7.15	6.90	5.60	4.10	3.25
28.0	5.80	6.00	6.00	6.35	6.15	5.35	3.90	3.15
30.0	5.20	5.35	5.40	5.70	5.55	5.10	3.75	3.05
32.0	4.65	4.80	4.85	5.10	5.00	4.90	3.60	3.00
34.0	4.20	4.30	4.40	4.60	4.50	4.70	3.45	2.90
36.0	3.80	3.90	3.95	4.15	4.10	4.40	3.35	2.85
38.0	3.45	3.50	3.60	3.75	3.70	4.00	3.25	2.75
40.0	3.15	3.20	3.30	3.40	3.40	3.65	3.15	2.70
42.0	40.6m×3.05t	41.2m×3.00t	3.00	3.10	3.10	3.30	3.05	2.65
44.0			2.75	2.80	2.80	3.00	2.90	2.60
46.0			2.45	2.55	2.60	2.75	2.65	2.55
48.0			46.3m×2.35t	47.2m×2.30t	2.35	2.50	2.40	2.55
50.0					2.15	2.25	2.20	2.40
52.0					51.9m×1.80t	2.05	2.05	2.20
54.0						53.2m×1.75t	1.85	2.00
56.0							1.60	1.80
58.0							56.5m×1.50t	1.55
58.5								58.2m×1.50t

Unit : ton

Main Boom Length (m)	37							
Jib Boom Length (m)	10		16		22		28	
Offset Angle (°)	10	30	10	30	10	30	10	30
Working Radius (m)								
11.3	11.9m×11.00t							
12.0	11.00							
14.0	11.00	14.9m×10.95t	11.00					
16.0	11.00	10.70	11.00		16.1m×9.15t			
18.0	11.00	10.30	11.00	18.8m×8.55t	8.80		18.2m×5.00t	
20.0	9.55	9.95	9.80	8.30	8.40		4.80	
22.0	8.30	8.65	8.55	7.90	8.05	22.7m×6.20t	4.55	
24.0	7.25	7.55	7.50	7.60	7.65	6.00	4.35	
26.0	6.40	6.65	6.65	7.05	6.80	5.70	4.15	26.6m×3.25t
28.0	5.70	5.90	5.90	6.30	6.05	5.45	4.00	3.20
30.0	5.10	5.30	5.30	5.60	5.40	5.20	3.85	3.10
32.0	4.55	4.70	4.75	5.05	4.90	5.00	3.70	3.00
34.0	4.10	4.25	4.25	4.55	4.40	4.80	3.55	2.95
36.0	3.70	3.80	3.85	4.10	4.00	4.30	3.45	2.85
38.0	3.35	3.40	3.50	3.70	3.60	3.90	3.30	2.80
40.0	3.00	3.05	3.15	3.35	3.25	3.55	3.20	2.75
42.0	2.75	2.75	2.85	3.00	2.95	3.20	3.05	2.70
44.0	43.2m×2.50t	43.8m×2.40t	2.60	2.70	2.70	2.90	2.80	2.65
46.0			2.35	2.45	2.45	2.65	2.55	2.60
48.0			2.10	2.20	2.25	2.40	2.30	2.55
50.0			48.9m×1.90t	49.8m×1.85t	2.05	2.15	2.10	2.30
52.0					1.85	1.95	1.90	2.10
54.0					1.50	1.75	1.75	1.90
56.0						55.1m×1.50t	1.55	1.70
58.0							56.4m×1.50t	1.55
58.5								1.50

Notes: 1. The rated loads shown do not exceed 75% of tipping load with the machine on firm level ground.

2. The load to be actually lifted will be the rated load shown minus the weight of all lifting attachments such as a hook.

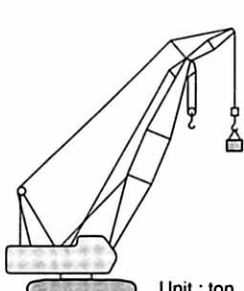
Hook Capacity (ton)	Hook Weight (ton)
90	0.97
45	0.62
22	0.60
11	0.37

3. Working radius is the horizontal distance from the swing center to the center of gravity of a lifted load.

4. The counterweight is 31.3 ton.

5. Be sure to fully extend the side frames before operating the machine.

# 75% Tipping Load (PCSA Rating)



## Crane Ratings ( Jib in 360° Working Area) (2)

Main Boom Length (m)	40							
Jib Boom Length (m)	10		16		22		28	
Offset Angle (°)	10	30	10	30	10	30	10	30
Working Radius (m)								
12.4	11.00							
14.0	11.00	15.4m×10.95t	14.5m×11.00t					
16.0	11.00	10.85	11.00			16.6m×9.15t		
18.0	10.95	10.45	11.00	19.3m×8.50t	8.90		18.7m×5.00t	
20.0	9.35	9.80	9.65	8.40	8.55		4.85	
22.0	8.10	8.50	8.35	8.05	8.20	23.2m×6.20t	4.65	
24.0	7.10	7.40	7.35	7.70	7.50	6.10	4.45	
26.0	6.25	6.55	6.45	6.95	6.65	5.80	4.25	27.1m×3.25t
28.0	5.55	5.75	5.75	6.15	5.90	5.55	4.05	3.20
30.0	4.90	5.10	5.10	5.50	5.25	5.30	3.90	3.10
32.0	4.40	4.55	4.55	4.90	4.70	5.10	3.75	3.05
34.0	3.90	4.05	4.10	4.40	4.25	4.65	3.65	2.95
36.0	3.50	3.65	3.70	3.95	3.80	4.20	3.50	2.90
38.0	3.15	3.25	3.30	3.55	3.45	3.80	3.40	2.80
40.0	2.80	2.90	3.00	3.20	3.10	3.40	3.20	2.75
42.0	2.55	2.60	2.70	2.85	2.80	3.10	2.90	2.70
44.0	2.30	2.35	2.40	2.55	2.55	2.80	2.60	2.65
46.0	45.8m×1.85t	1.90	2.20	2.30	2.30	2.50	2.35	2.60
48.0		46.4m×1.80t	1.95	2.05	2.05	2.25	2.15	2.45
50.0			1.65	1.85	1.85	2.05	1.95	2.20
52.0			50.7m×1.50t	51.5m×1.50t	1.65	1.80	1.75	1.95
54.0					53.3m×1.50t	1.60	1.55	1.75
56.0						55.0m×1.50t	1.60	1.60
57.0							54.6m×1.50t	1.50

Unit : ton

Main Boom Length (m)	43							
Jib Boom Length (m)	10		16		22		28	
Offset Angle (°)	10	30	10	30	10	30	10	30
Working Radius (m)								
12.4	13.0m×11.00t							
14.0	11.00		15.1m×11.00t					
16.0	11.00	10.95	11.00			17.2m×9.15t		
18.0	10.80	10.55	11.00	19.9m×8.50t	9.00		19.3m×5.00t	
20.0	9.25	9.70	9.50	8.50	8.65		4.90	
22.0	8.00	8.40	8.25	8.15	8.30	23.8m×6.20t	4.70	
24.0	6.95	7.30	7.20	7.75	7.40	6.15	4.50	
26.0	6.10	6.40	6.35	6.85	6.50	5.90	4.30	27.7m×3.25t
28.0	5.40	5.65	5.60	6.05	5.75	5.60	4.15	3.20
30.0	4.75	5.00	4.95	5.35	5.15	5.40	4.00	3.15
32.0	4.25	4.45	4.40	4.80	4.60	5.10	3.85	3.05
34.0	3.75	3.95	3.95	4.25	4.10	4.55	3.70	2.95
36.0	3.35	3.50	3.55	3.80	3.65	4.10	3.55	2.90
38.0	3.00	3.10	3.15	3.40	3.30	3.65	3.40	2.85
40.0	2.65	2.75	2.85	3.05	2.95	3.30	3.05	2.80
42.0	2.40	2.45	2.55	2.75	2.65	2.95	2.75	2.75
44.0	2.10	2.20	2.25	2.45	2.40	2.65	2.50	2.70
46.0	1.85	1.95	2.05	2.15	2.15	2.40	2.25	2.60
48.0	47.5m×1.50t	1.50	1.80	1.95	1.90	2.15	2.00	2.30
50.0			1.60	1.70	1.70	1.90	1.80	2.10
52.0			50.5m×1.50t	51.6m×1.50t	1.50	1.70	1.60	1.85
54.0						1.50	53.0m×1.50t	1.65
56.0								55.5m×1.50t
57.0								

Notes: 1. The rated loads shown do not exceed 75% of tipping load with the machine on firm level ground.

2. The load to be actually lifted will be the rated load shown minus the weight of all lifting attachments such as a hook.

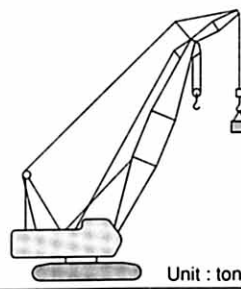
Hook Capacity (ton)	Hook Weight (ton)
90	0.97
45	0.62
22	0.60
11	0.37

3. Working radius is the horizontal distance from the swing center to the center of gravity of a lifted load.

4. The counterweight is 31.3 ton.

5. Be sure to fully extend the side frames before operating the machine.

# 75% Tipping Load (PCSA Rating)



## Crane Ratings ( Jib in 360° Working Area) (3)

Main Boom Length (m)	46							
Jib Boom Length (m)	10		16		22		28	
Offset Angle (°)	10	30	10	30	10	30	10	30
Working Radius (m)								
13.5	11.00							
14.0	11.00		15.6m×11.00t					
16.0	11.00	16.5m×10.95t	11.00		17.7m×9.15t			
18.0	10.65	10.65	10.95		9.10		19.8m×5.00t	
20.0	9.10	9.55	9.35	20.4m×8.50t	8.75		4.95	
22.0	7.85	8.25	8.10	8.20	8.30		4.75	
24.0	6.80	7.20	7.05	7.65	7.25	24.3m×6.20t	4.55	
26.0	5.95	6.30	6.20	6.70	6.35	5.95	4.35	
28.0	5.20	5.50	5.45	5.95	5.65	5.70	4.20	28.2m×3.20t
30.0	4.60	4.85	4.80	5.25	5.00	5.45	4.05	3.15
32.0	4.05	4.30	4.25	4.65	4.45	5.00	3.90	3.05
34.0	3.60	3.80	3.80	4.15	3.95	4.45	3.75	3.00
36.0	3.20	3.35	3.40	3.70	3.55	4.00	3.65	2.95
38.0	2.85	3.00	3.00	3.30	3.15	3.55	3.25	2.85
40.0	2.50	2.65	2.70	2.95	2.80	3.20	2.90	2.80
42.0	2.20	2.30	2.40	2.60	2.50	2.85	2.60	2.75
44.0	1.95	2.05	2.10	2.30	2.25	2.55	2.35	2.70
46.0	1.70	1.80	1.85	2.05	2.00	2.25	2.10	2.45
48.0	47.2m×1.50t	1.50	1.65	1.80	1.75	2.00	1.85	2.20
50.0			49.5m×1.50t	1.55	1.55	1.80	1.65	1.95
52.0				50.5m×1.50t	50.5m×1.50t	1.55	51.5m×1.50t	1.75
54.0						52.5m×1.50t		1.55
54.5								1.50

Unit : ton

Main Boom Length (m)	49							
Jib Boom Length (m)	10		16		22		28	
Offset Angle (°)	10	30	10	30	10	30	10	30
Working Radius (m)								
13.5								
14.0	14.1m×11.00t							
16.0	11.00	17.1m×10.95t	16.2m×11.00t					
18.0	10.55	10.75	10.85			18.3m×9.15t		
20.0	9.00	9.50	9.30	21.0m×8.20t	8.85		20.4m×5.00t	
22.0	7.75	8.20	8.00	8.00	8.20		4.80	
24.0	6.70	7.10	6.95	7.60	7.15	24.9m×6.15t	4.60	
26.0	5.85	6.20	6.10	6.65	6.30	6.00	4.45	
28.0	5.10	5.45	5.35	5.85	5.55	5.75	4.25	28.8m×3.20t
30.0	4.50	4.80	4.70	5.15	4.90	5.50	4.10	3.15
32.0	3.95	4.20	4.15	4.60	4.35	4.90	3.95	3.10
34.0	3.50	3.70	3.70	4.05	3.85	4.40	3.85	3.00
36.0	3.10	3.25	3.25	3.60	3.40	3.90	3.55	2.95
38.0	2.70	2.90	2.90	3.20	3.05	3.50	3.15	2.90
40.0	2.40	2.55	2.55	2.85	2.70	3.10	2.80	2.85
42.0	2.10	2.20	2.25	2.50	2.40	2.75	2.50	2.75
44.0	1.85	1.95	2.00	2.20	2.10	2.45	2.25	2.65
46.0	1.60	1.70	1.75	1.95	1.85	2.20	1.95	2.40
48.0	46.6m×1.50t	47.5m×1.50t	1.50	1.70	1.65	1.90	1.75	2.10
50.0			49.6m×1.50t	49.5m×1.50t	1.70	1.55	1.90	1.90
52.0					51.6m×1.50t	50.5m×1.50t	1.65	
54.0								53.5m×1.50t
54.5								

Notes: 1. The rated loads shown do not exceed 75% of tipping load with the machine on firm level ground.

2. The load to be actually lifted will be the rated load shown minus the weight of all lifting attachments such as a hook.

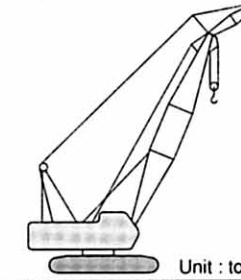
Hook Capacity (ton)	Hook Weight (ton)
90	0.97
45	0.62
22	0.60
11	0.37

3. Working radius is the horizontal distance from the swing center to the center of gravity of a lifted load.

4. The counterweight is 31.3 ton.

5. Be sure to fully extend the side frames before operating the machine.

# 75% Tipping Load (PCSA Rating)



## Crane Ratings ( Jib in 360° Working Area) (4)

Main Boom Length (m)	52			
Jib Boom Length (m)	10		16	
Offset Angle (°)	10	30	10	30
Working Radius (m)				
14.0	14.6m×11.00t			
16.0	11.00	17.6m×10.20t	16.7m×11.00t	
18.0	10.45	10.10	10.75	
20.0	8.85	9.40	9.15	21.5m×7.10t
22.0	7.60	8.05	7.85	7.00
24.0	6.55	7.00	6.80	6.70
26.0	5.70	6.05	5.95	6.40
28.0	5.00	5.30	5.20	5.75
30.0	4.35	4.65	4.60	5.05
32.0	3.80	4.10	4.05	4.45
34.0	3.35	3.60	3.55	3.95
36.0	2.95	3.15	3.15	3.50
38.0	2.55	2.75	2.75	3.10
40.0	2.25	2.40	2.40	2.70
42.0	1.95	2.10	2.10	2.40
44.0	1.65	1.80	1.85	2.10
46.0	45.5m×1.50t	1.55	1.60	1.80
48.0		46.4m×1.50t	46.8m×1.50t	1.55
50.0				48.5m×1.50t

Notes: 1. The rated loads shown do not exceed 75% of tipping load with the machine on firm level ground.

2. The load to be actually lifted will be the rated load shown minus the weight of all lifting attachments such as a hook.

Hook Capacity (ton)	Hook Weight (ton)
90	0.97
45	0.62
22	0.60
11	0.37

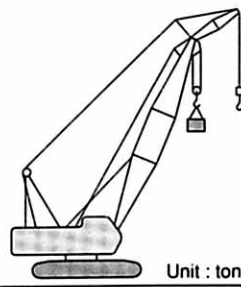
3. Working radius is the horizontal distance from the swing center to the center of gravity of a lifted load.

4. The counterweight is 31.3 ton.

5. Be sure to fully extend the side frames before operating the machine.



# 78% Tipping Load (JIS Rating)



## Crane Ratings ( Main boom with Jib in 360° Working Area) (1)

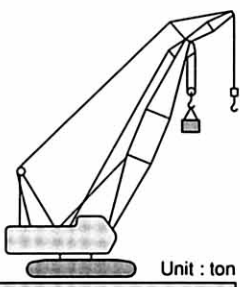
Unit : ton								
Main Boom Length (m)	34							
Jib Boom Length (m)	10		16		22		28	
Offset Angle (°)	10	30	10	30	10	30	10	30
Working Radius (m)	10	30	10	30	10	30	10	30
7.8	34.60	34.30	34.15	33.50	33.55	32.60	32.90	31.50
8.0	33.40	33.05	32.90	32.30	32.30	31.40	31.65	30.35
9.0	28.20	27.90	27.70	27.20	27.15	26.35	26.50	25.40
10.0	24.20	23.95	23.75	23.30	23.20	22.55	22.60	21.65
12.0	18.65	18.45	18.20	17.85	17.70	17.15	17.10	16.40
14.0	14.90	14.75	14.50	14.20	14.00	13.60	13.45	12.85
16.0	12.25	12.10	11.80	11.60	11.35	11.00	10.80	10.35
18.0	10.25	10.15	9.85	9.65	9.35	9.10	8.85	8.50
20.0	8.70	8.60	8.30	8.15	7.85	7.60	7.35	7.05
22.0	7.45	7.40	7.05	6.95	6.60	6.45	6.10	5.90
24.0	6.45	6.40	6.05	5.95	5.60	5.50	5.15	4.95
26.0	5.60	5.55	5.20	5.15	4.80	4.70	4.30	4.20
28.0	4.90	4.85	4.55	4.50	4.10	4.05	3.55	3.45
30.0	4.20	4.15	3.70	3.65	3.20	3.10	2.60	2.50
32.0	30.8m×3.80t	30.8m×3.75t	30.8m×3.30t	30.8m×3.30t	30.8m×2.80t	30.8m×2.75t	30.8m×2.20t	30.8m×2.15t
33.4								

Unit : ton								
Main Boom Length (m)	37							
Jib Boom Length (m)	10		16		22		28	
Offset Angle (°)	10	30	10	30	10	30	10	30
Working Radius (m)	10	30	10	30	10	30	10	30
7.8								
8.0	8.4m×31.10t	8.4m×30.75t	8.4m×30.60t	8.4m×30.00t	8.4m×30.05t	8.4m×29.15t	8.4m×29.40t	8.4m×28.15t
9.0	28.15	27.85	27.65	27.15	27.10	26.30	26.50	25.35
10.0	24.20	23.90	23.70	23.25	23.20	22.50	22.60	21.60
12.0	18.60	18.40	18.15	17.80	17.65	17.10	17.10	16.35
14.0	14.85	14.70	14.45	14.15	13.95	13.55	13.40	12.80
16.0	12.20	12.05	11.75	11.55	11.30	10.95	10.80	10.30
18.0	10.20	10.05	9.75	9.60	9.30	9.05	8.80	8.40
20.0	8.60	8.50	8.20	8.05	7.80	7.55	7.30	6.95
22.0	7.35	7.30	7.00	6.85	6.55	6.35	6.05	5.80
24.0	6.35	6.30	5.95	5.85	5.55	5.40	5.10	4.85
26.0	5.50	5.45	5.15	5.05	4.70	4.60	4.25	4.10
28.0	4.80	4.75	4.45	4.35	4.00	3.90	3.55	3.45
30.0	4.20	4.15	3.85	3.80	3.45	3.35	2.85	2.75
32.0	3.60	3.55	3.15	3.10	2.60	2.55	2.05	1.95
33.4	3.00	3.00	2.55	2.50	2.05	2.00	33.2m×1.50t	33.1m×1.50t

- Notes: 1. The rated loads shown do not exceed 78% of tipping load with the machine on firm level ground, and are not less than 1.15 times over-front stability stipulated by the mobile crane construction standards.  
 2. The load to be actually lifted will be the rated load shown minus the weight of all lifting attachments such as a hook.  
 Auxiliary hook Hook capacity : 11 ton Hook weight : 0.37 ton  
 3. Working radius is the horizontal distance from the swing center to the center of gravity of a lifted load.  
 4. The counterweight is 31.3 ton.  
 5. Be sure to fully extend the side frames before operating the machine.  
 6. Correlation among the number of rope reevings, maximum rated loads and hook weights are shown in the table below.

Hook Capacity (ton)	Hook Weight (ton)	Maximum Rated Load (ton)			
		4	3	2	1
45	0.62	34.6	33	22	-
22	0.60	-	-	22	-

# 78% Tipping Load (JIS Rating)



## Crane Ratings ( Main boom with Jib in 360° Working Area) (2)

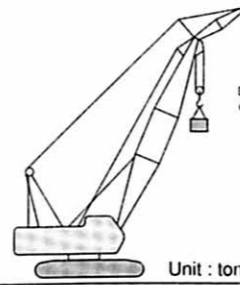
Unit : ton								
Main Boom Length (m)	40							
Jib Boom Length (m)	10		16		22		28	
Offset Angle (°)	10	30	10	30	10	30	10	30
Working Radius (m)	10	30	10	30	10	30	10	30
8.9	28.45	28.15	27.95	27.40	27.45	26.60	26.80	25.65
9.0	27.95	27.70	27.50	26.95	26.95	26.15	26.35	25.20
10.0	24.00	23.75	23.55	23.10	23.05	22.35	22.45	21.45
12.0	18.45	18.20	18.00	17.65	17.50	16.95	16.95	16.20
14.0	14.70	14.50	14.25	14.00	13.80	13.35	13.30	12.65
16.0	12.00	11.85	11.60	11.35	11.15	10.80	10.65	10.15
18.0	10.00	9.90	9.60	9.40	9.15	8.85	8.70	8.25
20.0	8.45	8.35	8.05	7.90	7.60	7.35	7.15	6.80
22.0	7.20	7.10	6.80	6.65	6.40	6.20	5.90	5.65
24.0	6.15	6.10	5.80	5.70	5.40	5.20	4.90	4.70
26.0	5.35	5.25	4.95	4.85	4.55	4.40	4.10	3.90
28.0	4.60	4.55	4.25	4.15	3.85	3.75	3.40	3.25
30.0	4.00	3.95	3.65	3.60	3.25	3.15	2.80	2.70
32.0	3.50	3.45	3.15	3.10	2.65	2.60	2.10	2.00
34.0	2.95	2.90	2.45	2.40	1.95	1.90	33.7m×1.50t	33.4m×1.50t
36.0	2.20	2.15	1.75	1.70	35.2m×1.50t	35.1m×1.50t		
38.0								
38.6								

Unit : ton								
Main Boom Length (m)	43							
Jib Boom Length (m)	10		16		22		28	
Offset Angle (°)	10	30	10	30	10	30	10	30
Working Radius (m)	10	30	10	30	10	30	10	30
8.9								
9.0	9.5m×25.75t	9.5m×25.45t	9.5m×25.30t	9.5m×24.75t	9.5m×24.75t	9.5m×24.00t	9.5m×24.20t	9.5m×23.10t
10.0	23.90	23.60	23.45	22.95	22.95	22.20	22.35	21.35
12.0	18.30	18.10	17.85	17.50	17.40	16.80	16.85	16.05
14.0	14.55	14.35	14.15	13.85	13.70	13.25	13.15	12.55
16.0	11.85	11.70	11.45	11.20	11.05	10.65	10.55	10.00
18.0	9.85	9.75	9.45	9.25	9.05	8.70	8.55	8.15
20.0	8.30	8.20	7.90	7.75	7.50	7.20	7.00	6.65
22.0	7.05	6.95	6.65	6.50	6.25	6.05	5.80	5.50
24.0	6.00	5.95	5.65	5.50	5.25	5.05	4.80	4.55
26.0	5.15	5.10	4.80	4.70	4.40	4.25	3.95	3.75
28.0	4.45	4.40	4.10	4.00	3.70	3.55	3.25	3.10
30.0	3.85	3.80	3.50	3.40	3.10	3.00	2.70	2.55
32.0	3.35	3.30	3.00	2.90	2.60	2.50	2.10	1.95
34.0	2.85	2.85	2.50	2.40	2.00	1.90	33.8m×1.50t	33.3m×1.50t
36.0	2.30	2.25	1.85	1.80	35.5m×1.50t	35.3m×1.50t		
38.0	1.70	1.65	37.1m×1.50t	37.0m×1.50t				
38.6	1.50	1.50						

- Notes: 1. The rated loads shown do not exceed 78% of tipping load with the machine on firm level ground, and are not less than 1.15 times over-front stability stipulated by the mobile crane construction standards.  
 2. The load to be actually lifted will be the rated load shown minus the weight of all lifting attachments such as a hook.  
 Auxiliary hook Hook capacity : 11 ton Hook weight : 0.37 ton  
 3. Working radius is the horizontal distance from the swing center to the center of gravity of a lifted load.  
 4. The counterweight is 31.3 ton.  
 5. Be sure to fully extend the side frames before operating the machine.  
 6. Correlation among the number of rope reevings, maximum rated loads and hook weights are shown in the table below.

Hook Capacity (ton)	Hook Weight (ton)	Maximum Rated Load (ton)			
		4	3	2	1
45	0.62	34.6	33	22	-
22	0.60	-	-	22	-

## 78% Tipping Load (JIS Rating)



### Crane Ratings ( Main boom with Jib in 360° Working Area) (3)

Main Boom Length (m)	46							
Jib Boom Length (m)	10		16		22		28	
Offset Angle (°)	10	30	10	30	10	30	10	30
Working Radius (m)								
10.0	23.75	23.50	23.30	22.85	22.80	22.05	22.25	21.20
12.0	18.15	17.95	17.75	17.35	17.25	16.70	16.75	15.95
14.0	14.40	14.25	14.00	13.70	13.55	13.10	13.05	12.40
16.0	11.70	11.55	11.35	11.10	10.90	10.50	10.40	9.90
18.0	9.70	9.60	9.35	9.10	8.90	8.60	8.45	8.00
20.0	8.15	8.05	7.75	7.60	7.35	7.10	6.90	6.50
22.0	6.90	6.80	6.50	6.35	6.10	5.90	5.65	5.35
24.0	5.85	5.80	5.50	5.35	5.10	4.90	4.65	4.40
26.0	5.00	4.95	4.65	4.55	4.25	4.10	3.85	3.60
28.0	4.30	4.25	3.95	3.85	3.55	3.40	3.15	2.95
30.0	3.70	3.65	3.35	3.25	2.95	2.85	2.55	2.40
32.0	3.15	3.10	2.80	2.75	2.45	2.35	2.00	1.80
34.0	2.70	2.65	2.35	2.30	1.90	1.80	33.6m×1.50t	33.0m×1.50t
36.0	2.30	2.25	1.85	1.75	35.4m×1.50t	35.0m×1.50t		
38.0	1.75	1.70	37.2m×1.50t	37.0m×1.50t				
38.9	1.50	38.7m×1.50t						

Unit : ton

Main Boom Length (m)	49							
Jib Boom Length (m)	10		16		22		28	
Offset Angle (°)	10	30	10	30	10	30	10	30
Working Radius (m)								
10.0	10.6m×21.75t	10.6m×21.50t	10.6m×21.30t	10.6m×20.85t	10.6m×20.85t	10.6m×20.15t	10.6m×20.30t	10.6m×19.35t
12.0	18.10	17.85	17.65	17.30	17.20	16.65	16.70	15.90
14.0	14.35	14.15	13.95	13.65	13.50	13.00	13.00	12.35
16.0	11.65	11.50	11.25	11.00	10.85	10.45	10.35	9.80
18.0	9.65	9.50	9.25	9.05	8.85	8.50	8.40	7.90
20.0	8.05	7.95	7.70	7.50	7.30	7.00	6.85	6.45
22.0	6.80	6.70	6.45	6.30	6.05	5.80	5.60	5.25
24.0	5.80	5.70	5.40	5.30	5.05	4.80	4.60	4.30
26.0	4.95	4.85	4.55	4.45	4.20	4.00	3.75	3.50
28.0	4.20	4.15	3.85	3.75	3.50	3.30	3.05	2.85
30.0	3.60	3.55	3.25	3.15	2.85	2.75	2.45	2.30
32.0	3.05	3.00	2.70	2.65	2.35	2.25	1.90	1.70
34.0	2.60	2.55	2.25	2.20	1.85	1.70	33.3m×1.50t	32.7m×1.50t
36.0	2.20	2.15	1.80	1.70	35.2m×1.50t	34.7m×1.50t		
38.0	1.70	1.65	37.2m×1.50t	36.7m×1.50t				
38.9	38.8m×1.50t	38.6m×1.50t						

Unit : ton

Notes: 1. The rated loads shown do not exceed 78% of tipping load with the machine on firm level ground, and are not less than 1.15 times over-front stability stipulated by the mobile crane construction standards.

2. The load to be actually lifted will be the rated load shown minus the weight of all lifting attachments such as a hook.

Auxiliary hook Hook capacity : 11 ton Hook weight : 0.37 ton

3. Working radius is the horizontal distance from the swing center to the center of gravity of a lifted load.

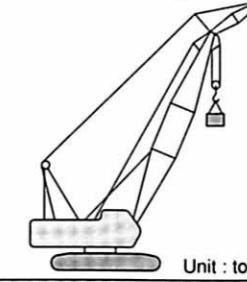
4. The counterweight is 31.3 ton.

5. Be sure to fully extend the side frames before operating the machine.

6. Correlation among the number of rope reevings, maximum rated loads and hook weights are shown in the table below.

Hook Capacity (ton)	Hook Weight (ton)	Maximum Rated Load (ton)			
		4	3	2	1
45	0.62	34.6	33	22	-
22	0.60	-	-	22	-

## 78% Tipping Load (JIS Rating)



### Crane Ratings ( Main boom with Jib in 360° Working Area) (4)

Main Boom Length (m)	52			
Jib Boom Length (m)	10		16	
Offset Angle (°)	10	30	10	30
Working Radius (m)				
10.0	11.1m×20.15t	11.1m×19.90t	11.1m×19.75t	11.1m×19.30t
12.0	17.95	17.70	17.55	17.15
14.0	14.20	14.00	13.80	13.50
16.0	11.50	11.35	11.10	10.85
18.0	9.50	9.35	9.10	8.90
20.0	7.90	7.80	7.55	7.35
22.0	6.65	6.55	6.30	6.15
24.0	5.65	5.55	5.30	5.15
26.0	4.75	4.70	4.45	4.30
28.0	4.05	4.00	3.70	3.60
30.0	3.45	3.35	3.10	3.00
32.0	2.90	2.85	2.55	2.50
34.0	2.45	2.40	2.10	2.05
36.0	2.05	2.00	1.65	1.55
38.0	1.60	1.55	36.5m×1.50t	36.2m×1.50t
38.9	38.4m×1.50t	38.2m×1.50t		

Unit : ton

Notes: 1. The rated loads shown do not exceed 78% of tipping load with the machine on firm level ground, and are not less than 1.15 times over-front stability stipulated by the mobile crane construction standards.

2. The load to be actually lifted will be the rated load shown minus the weight of all lifting attachments such as a hook.

Auxiliary hook Hook capacity : 11 ton Hook weight : 0.37 ton

3. Working radius is the horizontal distance from the swing center to the center of gravity of a lifted load.

4. The counterweight is 31.3 ton.

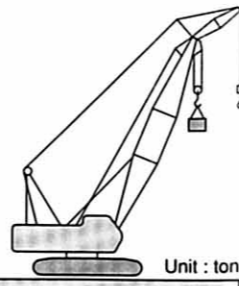
5. Be sure to fully extend the side frames before operating the machine.

6. Correlation among the number of rope reevings, maximum rated loads and hook weights are shown in the table below.

Hook Capacity (ton)	Hook Weight (ton)	Maximum Rated Load (ton)			
		4	3	2	1
45	0.62	34.6	33	22	-
22	0.60	-	-	22	-



# 75% Tipping Load (PCSA Rating)



## Crane Ratings ( Main boom with Jib in 360° Working Area) (1)

Main Boom Length (m)	34							
Jib Boom Length (m)	10		16		22		28	
Offset Angle (°)	10	30	10	30	10	30	10	30
Working Radius (m)								
7.8	33.60	33.25	33.10	32.50	32.55	31.60	31.90	30.55
8.0	32.40	32.05	31.90	31.30	31.35	30.45	30.70	29.40
9.0	27.30	27.05	26.85	26.35	26.30	25.55	25.70	24.60
10.0	23.50	23.25	23.05	22.60	22.50	21.85	21.95	21.00
12.0	18.10	17.90	17.65	17.30	17.15	16.65	16.60	15.90
14.0	14.45	14.30	14.05	13.80	13.60	13.20	13.05	12.50
16.0	11.90	11.75	11.50	11.25	11.00	10.70	10.50	10.05
18.0	9.95	9.85	9.55	9.40	9.10	8.85	8.60	8.25
20.0	8.45	8.35	8.05	7.90	7.60	7.40	7.15	6.85
22.0	7.25	7.15	6.85	6.75	6.45	6.25	5.95	5.75
24.0	6.25	6.20	5.90	5.80	5.45	5.35	5.00	4.85
26.0	5.45	5.40	5.10	5.00	4.70	4.60	4.20	4.10
28.0	4.80	4.75	4.40	4.35	4.00	3.95	3.55	3.45
30.0	4.20	4.15	3.70	3.65	3.20	3.10	2.60	2.50
32.0	30.8m×3.80t	30.8m×3.75t	30.8m×3.30t	30.8m×3.30t	30.8m×2.80t	30.8m×2.75t	30.8m×2.20t	30.8m×2.15t
33.4								

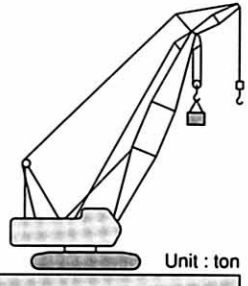
Unit : ton

Main Boom Length (m)	37							
Jib Boom Length (m)	10		16		22		28	
Offset Angle (°)	10	30	10	30	10	30	10	30
Working Radius (m)								
7.8								
8.0	8.4m×30.10t	8.4m×29.80t	8.4m×29.65t	8.4m×29.10t	8.4m×29.10t	8.4m×28.25t	8.4m×28.50t	8.4m×27.30t
9.0	27.25	27.00	26.80	26.30	26.30	25.50	25.70	24.60
10.0	23.45	23.20	23.00	22.55	22.50	21.80	21.90	20.95
12.0	18.05	17.85	17.60	17.25	17.15	16.60	16.60	15.85
14.0	14.40	14.25	14.00	13.75	13.55	13.15	13.05	12.45
16.0	11.80	11.70	11.45	11.20	11.00	10.65	10.50	10.00
18.0	9.90	9.75	9.50	9.30	9.05	8.80	8.60	8.20
20.0	8.35	8.30	8.00	7.85	7.55	7.35	7.10	6.80
22.0	7.15	7.10	6.80	6.65	6.35	6.20	5.90	5.65
24.0	6.20	6.10	5.80	5.70	5.40	5.25	4.95	4.75
26.0	5.35	5.30	5.00	4.90	4.60	4.50	4.15	4.00
28.0	4.70	4.65	4.30	4.25	3.95	3.85	3.50	3.35
30.0	4.10	4.05	3.75	3.70	3.35	3.30	2.85	2.75
32.0	3.60	3.55	3.15	3.10	2.60	2.55	2.05	1.95
33.4	3.00	3.00	2.55	2.50	2.05	2.00	33.2m×1.50t	33.1m×1.50t

- Notes: 1. The rated loads shown do not exceed 75% of tipping load with the machine on firm level ground.  
 2. The load to be actually lifted will be the rated load shown minus the weight of all lifting attachments such as a hook.  
 Auxiliary hook Hook capacity : 11 ton Hook weight : 0.37 ton  
 3. Working radius is the horizontal distance from the swing center to the center of gravity of a lifted load.  
 4. The counterweight is 31.3 ton.  
 5. Be sure to fully extend the side frames before operating the machine.  
 6. Correlation between the number of rope reevings, maximum rated loads and hook weights are shown in the table below.

Hook Capacity (ton)	Hook Weight (ton)	Maximum Rated Load (ton)		
		3	2	1
45	0.62	33.6	22	-
22	0.60	-	22	-

# 75% Tipping Load (PCSA Rating)



## Crane Ratings ( Main boom with Jib in 360° Working Area) (2)

Main Boom Length (m)	40							
Jib Boom Length (m)	10		16		22		28	
Offset Angle (°)	10	30	10	30	10	30	10	30
Working Radius (m)								
8.9	27.55	27.25	27.10	26.60	26.60	25.80	26.00	24.90
9.0	27.10	26.80	26.65	26.15	26.15	25.35	25.55	24.45
10.0	23.30	23.05	22.85	22.40	22.35	21.65	21.80	20.85
12.0	17.85	17.65	17.45	17.10	17.00	16.45	16.45	15.70
14.0	14.25	14.10	13.85	13.55	13.40	12.95	12.90	12.30
16.0	11.65	11.50	11.25	11.05	10.85	10.50	10.35	9.85
18.0	9.70	9.60	9.35	9.15	8.90	8.60	8.45	8.05
20.0	8.20	8.10	7.85	7.65	7.40	7.15	6.95	6.60
22.0	7.00	6.90	6.60	6.50	6.20	6.00	5.75	5.50
24.0	6.00	5.95	5.65	5.55	5.25	5.05	4.80	4.55
26.0	5.20	5.10	4.85	4.75	4.45	4.30	4.00	3.80
28.0	4.50	4.45	4.15	4.05	3.75	3.65	3.35	3.20
30.0	3.90	3.85	3.55	3.50	3.20	3.10	2.75	2.65
32.0	3.40	3.35	3.05	3.00	2.65	2.60	2.10	2.00
34.0	2.95	2.90	2.45	2.40	1.95	1.90	33.7m×1.50t	33.4m×1.50t
36.0	2.20	2.15	1.75	1.70	35.2m×1.50t	35.1m×1.50t		
38.0								
38.6								

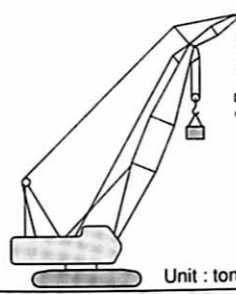
Unit : ton

Main Boom Length (m)	43							
Jib Boom Length (m)	10		16		22		28	
Offset Angle (°)	10	30	10	30	10	30	10	30
Working Radius (m)								
8.9								
9.0	9.5m×24.95t	9.5m×24.70t	9.5m×24.50t	9.5m×24.05t	9.5m×24.00t	9.5m×23.25t	9.5m×23.45t	9.5m×22.40t
10.0	23.15	22.90	22.75	22.25	22.25	21.55	21.70	20.70
12.0	17.75	17.55	17.35	17.00	16.85	16.35	16.35	15.60
14.0	14.10	13.95	13.70	13.45	13.30	12.85	12.80	12.20
16.0	11.50	11.40	11.15	10.90	10.70	10.35	10.25	9.75
18.0	9.55	9.45	9.20	9.00	8.80	8.50	8.35	7.90
20.0	8.05	7.95	7.70	7.50	7.30	7.05	6.85	6.50
22.0	6.85	6.75	6.50	6.35	6.10	5.90	5.65	5.35
24.0	5.85	5.80	5.50	5.40	5.10	4.95	4.70	4.45
26.0	5.05	4.95	4.70	4.60	4.30	4.15	3.90	3.65
28.0	4.35	4.30	4.00	3.90	3.60	3.50	3.20	3.05
30.0	3.75	3.70	3.40	3.35	3.05	2.95	2.65	2.50
32.0	3.25	3.20	2.90	2.85	2.55	2.45	2.10	1.95
34.0	2.80	2.80	2.50	2.40	2.00	1.90	33.8m×1.50t	33.3m×1.50t
36.0	2.30	2.25	1.85	1.80	35.5m×1.50t	35.3m×1.50t		
38.0	1.70	1.65	37.1m×1.50t	37.0m×1.50t				
38.6	1.50	1.50						

- Notes: 1. The rated loads shown do not exceed 75% of tipping load with the machine on firm level ground.  
 2. The load to be actually lifted will be the rated load shown minus the weight of all lifting attachments such as a hook.  
 Auxiliary hook Hook capacity : 11 ton Hook weight : 0.37 ton  
 3. Working radius is the horizontal distance from the swing center to the center of gravity of a lifted load.  
 4. The counterweight is 31.3 ton.  
 5. Be sure to fully extend the side frames before operating the machine.  
 6. Correlation between the number of rope reevings, maximum rated loads and hook weights are shown in the table below.

Hook Capacity (ton)	Hook Weight (ton)	Maximum Rated Load (ton)		
		3	2	1
45	0.62	33.6	22	-
22	0.60	-	22	-

## 75% Tipping Load (PCSA Rating)



### Crane Ratings ( Main boom with Jib in 360° Working Area) (3)

Main Boom Length (m)	46							
Jib Boom Length (m)	10		16		22		28	
Offset Angle (°)	10	30	10	30	10	30	10	30
Working Radius (m)								
10.0	23.00	22.75	22.60	22.15	22.10	21.40	21.60	20.60
12.0	17.60	17.40	17.20	16.85	16.75	16.20	16.25	15.50
14.0	14.00	13.80	13.60	13.30	13.15	12.70	12.70	12.05
16.0	11.40	11.25	11.00	10.75	10.60	10.20	10.15	9.60
18.0	9.45	9.30	9.05	8.85	8.65	8.35	8.20	7.80
20.0	7.90	7.80	7.55	7.40	7.15	6.90	6.70	6.35
22.0	6.70	6.60	6.35	6.20	5.95	5.75	5.55	5.20
24.0	5.70	5.65	5.35	5.25	5.00	4.80	4.55	4.30
26.0	4.90	4.80	4.55	4.45	4.15	4.00	3.75	3.55
28.0	4.20	4.15	3.85	3.75	3.50	3.35	3.10	2.90
30.0	3.60	3.55	3.25	3.20	2.90	2.80	2.50	2.35
32.0	3.10	3.05	2.75	2.70	2.40	2.30	2.00	1.80
34.0	2.65	2.60	2.30	2.25	1.90	1.80	33.6m×1.50t	33.0m×1.50t
36.0	2.25	2.25	1.85	1.75	35.4m×1.50t	35.0m×1.50t		
38.0	1.75	1.70	37.2m×1.50t	37.0m×1.50t				
38.9	1.50	38.7m×1.50t						

Unit : ton

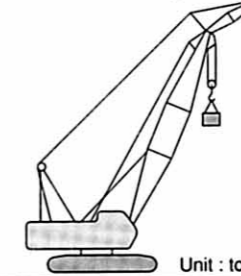
Main Boom Length (m)	49							
Jib Boom Length (m)	10		16		22		28	
Offset Angle (°)	10	30	10	30	10	30	10	30
Working Radius (m)								
10.0	10.6m×21.05t	10.6m×20.85t	10.6m×20.65t	10.6m×20.25t	10.6m×20.20t	10.6m×19.55t	10.6m×19.70t	10.6m×18.75t
12.0	17.55	17.35	17.15	16.80	16.70	16.15	16.20	15.40
14.0	13.90	13.75	13.55	13.25	13.10	12.65	12.65	12.00
16.0	11.30	11.15	10.95	10.70	10.55	10.15	10.10	9.55
18.0	9.35	9.25	9.00	8.80	8.60	8.30	8.15	7.70
20.0	7.85	7.75	7.50	7.30	7.10	6.80	6.65	6.30
22.0	6.60	6.55	6.25	6.10	5.90	5.65	5.45	5.15
24.0	5.65	5.55	5.30	5.15	4.90	4.70	4.50	4.20
26.0	4.80	4.75	4.45	4.35	4.10	3.90	3.70	3.45
28.0	4.10	4.05	3.75	3.65	3.40	3.25	3.00	2.80
30.0	3.50	3.45	3.15	3.10	2.80	2.70	2.40	2.25
32.0	3.00	2.95	2.65	2.60	2.30	2.20	1.90	1.70
34.0	2.55	2.50	2.20	2.15	1.85	1.70	33.3m×1.50t	32.7m×1.50t
36.0	2.15	2.10	1.80	1.70	35.2m×1.50t	34.7m×1.50t		
38.0	1.70	1.65	37.2m×1.50t	36.7m×1.50t				
38.9	38.8m×1.50t	38.6m×1.50t						

Unit : ton

- Notes: 1. The rated loads shown do not exceed 75% of tipping load with the machine on firm level ground.  
 2. The load to be actually lifted will be the rated load shown minus the weight of all lifting attachments such as a hook.  
 Auxiliary hook Hook capacity : 11 ton Hook weight : 0.37 ton  
 3. Working radius is the horizontal distance from the swing center to the center of gravity of a lifted load.  
 4. The counterweight is 31.3 ton.  
 5. Be sure to fully extend the side frames before operating the machine.  
 6. Correlation between the number of rope reevings, maximum rated loads and hook weights are shown in the table below.

Hook Capacity (ton)	Hook Weight (ton)	Maximum Rated Load (ton)		
		3	2	1
45	0.62	33.6	22	-
22	0.60	-	22	-

## 75% Tipping Load (PCSA Rating)



### Crane Ratings ( Main boom with Jib in 360° Working Area) (4)

Main Boom Length (m)	52			
Jib Boom Length (m)	10		16	
Offset Angle (°)	10	30	10	30
Working Radius (m)				
10.0	11.1m×19.55t	11.1m×19.30t	11.1m×19.15t	11.1m×18.75t
12.0	17.40	17.20	17.00	16.65
14.0	13.75	13.60	13.40	13.10
16.0	11.15	11.00	10.80	10.55
18.0	9.20	9.10	8.85	8.65
20.0	7.70	7.60	7.35	7.15
22.0	6.50	6.40	6.15	5.95
24.0	5.50	5.40	5.15	5.00
26.0	4.65	4.60	4.30	4.20
28.0	3.95	3.90	3.65	3.50
30.0	3.35	3.30	3.05	2.95
32.0	2.85	2.80	2.50	2.45
34.0	2.40	2.35	2.05	2.00
36.0	2.00	1.95	1.65	1.55
38.0	1.60	1.55	36.5m×1.50t	36.2m×1.50t
38.9	38.4m×1.50t	38.2m×1.50t		

Unit : ton

- Notes: 1. The rated loads shown do not exceed 75% of tipping load with the machine on firm level ground.  
 2. The load to be actually lifted will be the rated load shown minus the weight of all lifting attachments such as a hook.  
 Auxiliary hook Hook capacity : 11 ton Hook weight : 0.37 ton  
 3. Working radius is the horizontal distance from the swing center to the center of gravity of a lifted load.  
 4. The counterweight is 31.3 ton.  
 5. Be sure to fully extend the side frames before operating the machine.  
 6. Correlation between the number of rope reevings, maximum rated loads and hook weights are shown in the table below.

Hook Capacity (ton)	Hook Weight (ton)	Maximum Rated Load (ton)		
		3	2	1
45	0.62	33.6	22	-
22	0.60	-	22	-





# 78% Tipping Load (JIS Rating)

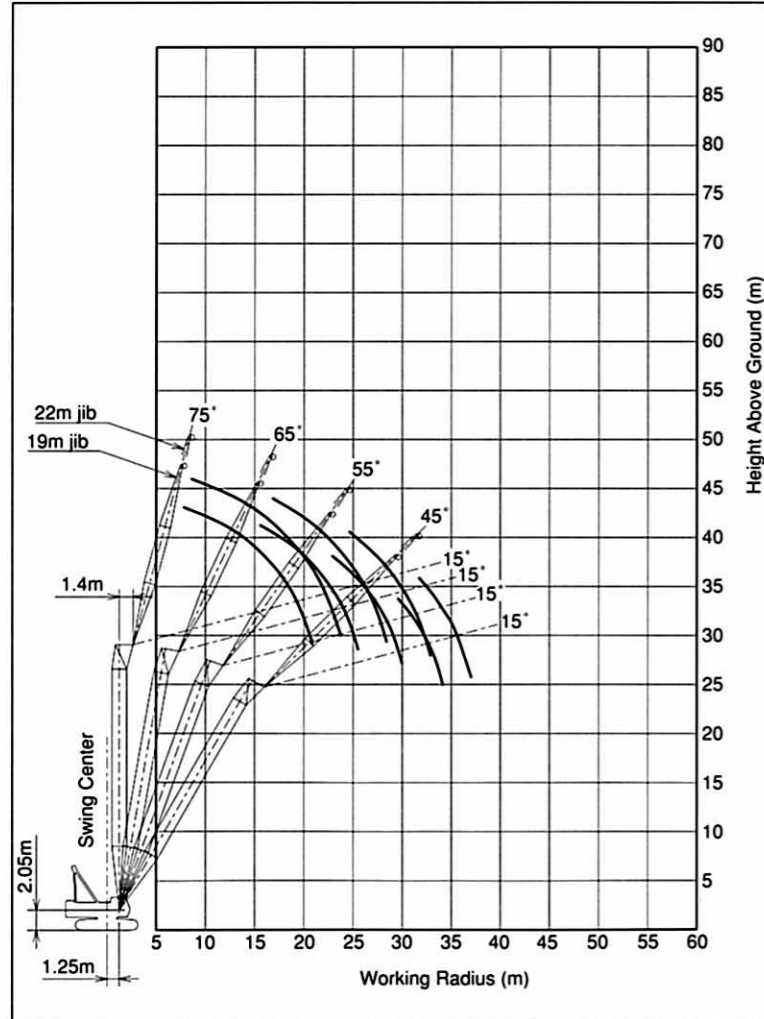
## 27m Tower (2-Rope Reeving)

### Rated Loads for Tower Crane

Unit : ton

Jib Length (m)	19				22			
	90	80	70	60	90	80	70	60
8.6	15.00							
9.0	15.00				9.5m×15.00t			
10.0	15.00				15.00			
12.0	15.00				15.00			
14.0	15.00	15.6m×13.05t			15.00			
16.0	13.60	12.65			13.55	16.9m×11.70t		
18.0	11.80	10.95			11.70	10.85		
20.0	10.35	9.60			10.25	9.50		
22.0	21.0m×8.25t	8.55	22.9m×7.35t		9.10	8.45		
24.0		7.65	6.95		23.9m×7.05t	7.55	24.6m×6.60t	
26.0		25.4m×7.15t	6.25			6.85	6.15	
28.0			5.70	29.5m×4.80t		6.20	5.60	
30.0			29.9m×5.25t	4.65	28.3m×6.15t	5.10	31.6m×4.25t	
32.0				4.30		4.70	4.15	
34.0				3.95		32.8m×4.55t	3.85	
36.0				34.1m×3.95t			3.55	
37.0							3.40	

### Working Ranges



Working ranges shown are under unloaded condition.

- Notes: 1. The rated loads shown do not exceed 78% of tipping load with the machine on firm level ground, and are not less than 1.15 times over-front stability stipulated by the mobile crane construction standards.  
 2. The load to be actually lifted will be the rated load shown minus the weight of all lifting attachments such as a hook.

Hook Capacity (ton)	Hook Weight (ton)
22	0.60

3. Working radius is a horizontal distance between swing center of the machine and center of gravity of a load lifted.  
 4. Counterweight is 31.3 ton.  
 5. Be sure to fully extend the side frames before operating the machine.

# 78% Tipping Load (JIS Rating)

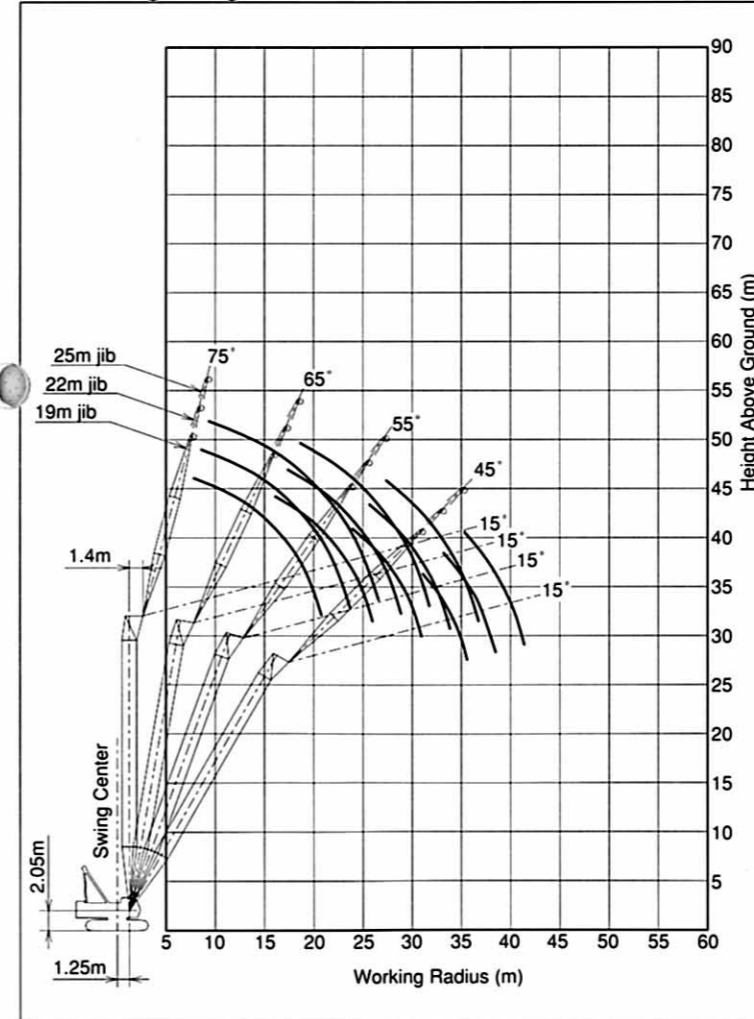
## 30m Tower (2-Rope Reeving)

### Rated Loads for Tower Crane

Unit : ton

Jib Length (m)	19				22				25				
	90	80	70	60	90	80	70	60	90	80	70	60	
8.7	15.00												
9.0	15.00				9.5m×15.00t								
10.0	15.00				15.00				10.3m×15.00t				
12.0	15.00				15.00				15.00				
14.0	15.00				15.00				15.00				
16.0	13.60	16.1m×12.40t			13.50	17.4m×11.15t			13.40				
18.0	11.75	10.80			11.70	10.70			11.60	18.7m×10.10t			
20.0	10.30	9.50			10.25	9.40			10.15	9.25			
22.0	21.0m×8.50t	8.45	23.9m×6.75t		9.10	8.35			9.00	8.20			
24.0		7.55	6.70		23.9m×7.25t	7.45	25.6m×6.05t		8.05	7.35			
26.0		25.9m×6.85t	6.05			6.75	5.95		7.30	6.65	27.3m×5.45t		
28.0			5.50			6.15	5.40		26.8m×6.25t	6.00	5.25		
30.0			5.05	31.0m×4.25t		28.8m×5.90t	4.95			5.50	4.80		
32.0			30.9m×4.85t	4.05			4.55	33.1m×3.75t		31.7m×5.10t	4.40		
34.0				3.75				33.8m×4.20t	3.60			4.05	35.2m×3.30t
36.0				35.6m×3.50t					3.35			3.75	3.20
38.0									3.10			36.7m×3.65t	2.95
40.0									38.5m×3.05t				2.75
41.4													2.60

### Working Ranges



Working ranges shown are under unloaded condition.

- Notes: 1. The rated loads shown do not exceed 78% of tipping load with the machine on firm level ground, and are not less than 1.15 times over-front stability stipulated by the mobile crane construction standards.  
 2. The load to be actually lifted will be the rated load shown minus the weight of all lifting attachments such as a hook.

Hook Capacity (ton)	Hook Weight (ton)
22	0.60

3. Working radius is a horizontal distance between swing center of the machine and center of gravity of a load lifted.  
 4. Counterweight is 31.3 ton.  
 5. Be sure to fully extend the side frames before operating the machine.

# 78% Tipping Load (JIS Rating)

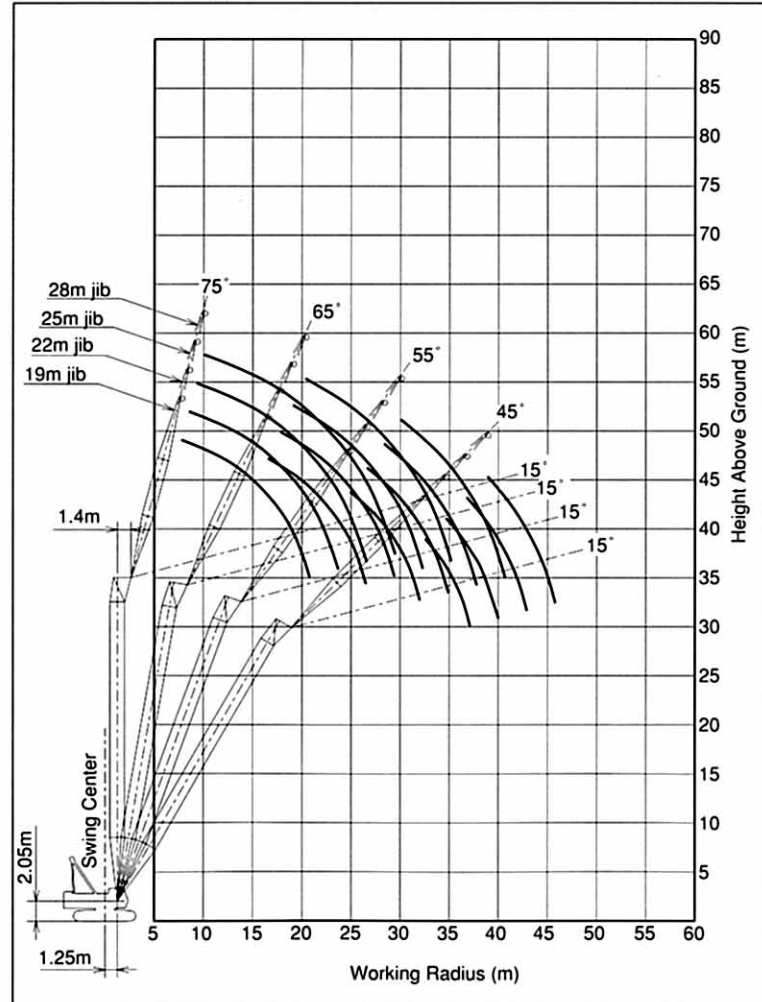
## 33m Tower (2-Rope Reeving)

### Rated Loads for Tower Crane

Unit : ton

Jib Length (m)	19				22				25				28			
	90	80	70	60	90	80	70	60	90	80	70	60	90	80	70	60
8.7	15.00															
9.0	15.00				9.6m×15.00t											
10.0	15.00				15.00			10.4m×15.00t					11.2m×15.00t			
12.0	15.00				15.00			15.00					15.00			
14.0	15.00				15.00			15.00					15.00			
16.0	13.55	16.6m×11.75t			13.50	17.9m×10.60t		13.40					13.30			
18.0	11.75	10.65			11.65	10.55		11.55	19.2m×9.60t				11.45			
20.0	10.30	9.35			10.25	9.25		10.15	9.10				10.05	20.4m×8.80t		
22.0	21.0m×8.70t	8.30			9.10	8.20		9.00	8.05				8.90	7.95		
24.0		7.45	24.9m×6.20t		23.9m×7.45t	7.35		8.05	7.20				8.00	7.10		
26.0		6.70	5.85		6.65	26.6m×5.55t		7.30	6.50				7.20	6.40		
28.0		26.5m×6.55t	5.30		6.05	5.20		26.8m×6.35t	5.90	28.4m×4.95t			6.55	5.80		
30.0			4.85		29.4m×5.65t	4.75		5.40	4.60				29.7m×5.45t	5.30	30.1m×4.45t	
32.0			4.45	32.5m×3.70t		4.35		4.95	4.20				4.85	4.10		
34.0				3.50		4.00	34.6m×3.30t		32.3m×4.90t	3.85			4.50	3.75		
36.0				3.20			34.9m×3.65t	3.10		3.55	36.7m×2.85t		35.2m×4.25t	3.45		
38.0					37.1m×3.10t			2.85		37.7m×3.35t	2.70		3.20	38.8m×2.50t		
40.0								2.65			2.50			2.95	2.40	
42.0											2.35			40.6m×2.90t	2.20	
44.0											42.9m×2.25t				2.00	
45.8																1.85

### Working Ranges



Working ranges shown are under unloaded condition.

Notes: 1. The rated loads shown do not exceed 78% of tipping load with the machine on firm level ground, and are not less than 1.15 times over-front stability stipulated by the mobile crane construction standards.

2. The load to be actually lifted will be the rated load shown minus the weight of all lifting attachments such as a hook.

Hook Capacity (ton)	Hook Weight (ton)
22	0.60

3. Working radius is a horizontal distance between swing center of the machine and center of gravity of a load lifted.

4. Counterweight is 31.3 ton.

5. Be sure to fully extend the side frames before operating the machine.

# 78% Tipping Load (JIS Rating)

## 36m Tower (2-Rope Reeving)

### Rated Loads for Tower Crane

Unit : ton

Jib Length (m)	19				22				25				28			
	90	80	70	60	90	80	70	60	90	80	70	60	90	80	70	60
8.8	15.00															
9.0	15.00				9.6m×15.00t											
10.0	15.00				15.00			10.4m×15.00t					11.3m×15.00t			
12.0	15.00				15.00			15.00					15.00			
14.0	15.00				15.00			15.00					15.00			
16.0	13.55	17.2m×11.10t			13.45			13.35					13.25			
18.0	11.70	10.50			11.65	18.4m×10.10t		11.55	19.7m×9.15t				11.45			
20.0	10.30	9.20			10.20	9.10		10.10	8.95				10.00	21.0m×8.30t		
22.0	21.0m×8.55t	8.15			9.05	8.05		8.95	7.95				8.90	7.85		
24.0		7.30	25.9m×5.65t		23.9m×7.35t	7.20		8.05	7.10				7.95	7.00		
26.0		6.60	5.65		6.50	27.7m×5.05t		7.25	6.40				7.20	6.30		
28.0		27.0m×6.30t	5.10		5.90	5.00		26.8m×6.30t	5.80	29.4m×4.55t			6.50	5.70		
30.0			4.65		29.9m×5.45t	4.55		5.30	4.40				29.7m×5.40t	5.20	31.1m×4.10t	
32.0			4.30			4.15		4.85	4.05				4.75	3.90		
34.0					33.0m×4.10t	3.25		3.85		32.8m×4.70t	3.70		4.40	3.60		
36.0					3.00			35.9m×3.55t	36.1m×2.85t		3.40		35.7m×4.10t	3.30		
38.0					2.75			2.65			3.15	38.2m×2.45t		3.05		
40.0						2.45		2.45		38.8m×3.05t	2.25		2.80	2.25		40.3m×2.05t
42.0								41.5m×2.30t			2.05			41.7m×2.65t	1.90	
44.0											1.90				1.70	
46.0											44.4m×1.85t				1.55	
47.3																1.45

Jib Length (m)	31			
Tower Angle	90	80	70	60
12.1	14.90			
14.0	14.75			
16.0	13.20			
18.0	11.35			
20.0	9.95			
22.0	8.80	22.2m×7.65t		
24.0	7.85	6.90		
26.0	7.10	6.20		
28.0	6.45	5.60		
30.0	5.90	5.10		
32.0	5.25	4.65	32.8m×3.65t	
34.0	32.6m×4.60t	4.30	3.50	
36.0		3.95	3.20	
38.0		3.65	2.95	
40.0		38.6m×3.60t	2.70	
42.0			2.50	42.5m×1.70t
44.0			2.30	1.55
46.0			44.6m×2.25t	1.40
48.0				1.25
50.0				1.15
50.2				1.10

Notes: 1. The rated loads shown do not exceed 78% of tipping load with the machine on firm level ground, and are not less than 1.15 times over-front stability stipulated by the mobile crane construction standards.

2. The load to be actually lifted will be the rated load shown minus the weight of all lifting attachments such as a hook.

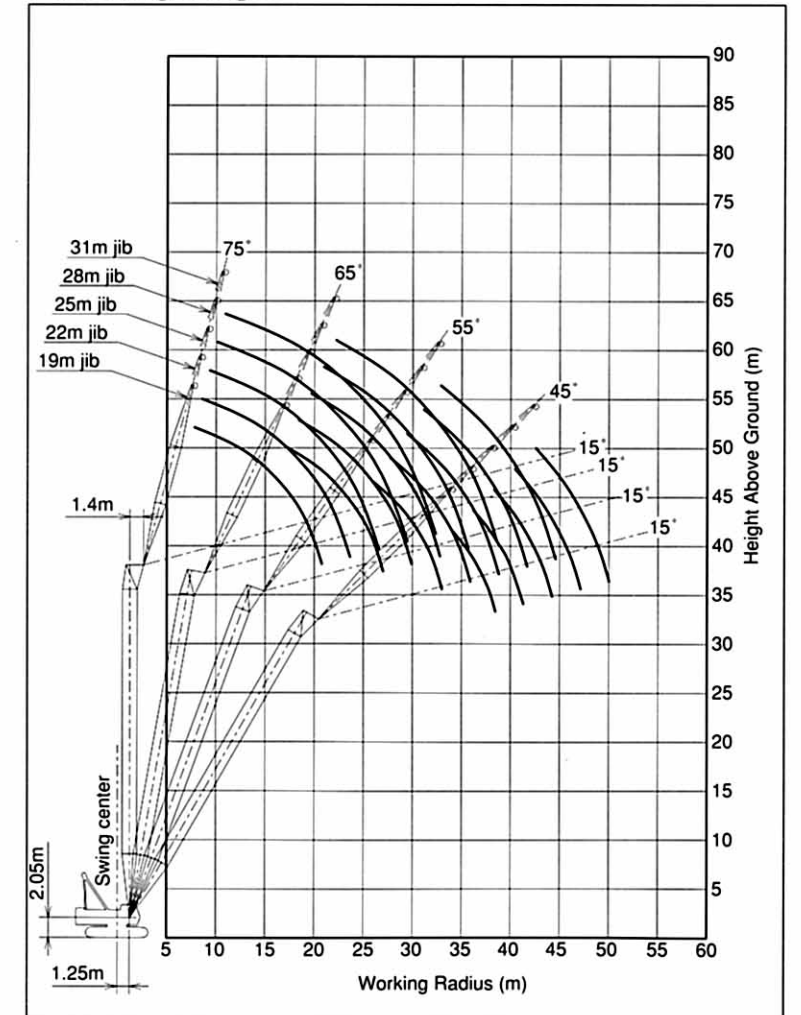
Hook Capacity (ton)	Hook Weight (ton)
22	0.60

3. Working radius is a horizontal distance between swing center of the machine and center of gravity of a load lifted.

4. Counterweight is 31.3 ton.

5. Be sure to fully extend the side frames before operating the machine.

### Working Ranges



Working ranges shown are under unloaded condition.



# 78% Tipping Load (JIS Rating)

## 39m Tower (2-Rope Reeving)

### Rated Loads for Tower Crane

Unit : ton

Jib Length (m)	19				22				25				28			
	90	80	70	60	90	80	70	60	90	80	70	60	90	80	70	60
8.8	15.00															
9.0	15.00				9.7m×15.00t											
10.0	15.00				15.00				10.5m×15.00t				11.3m×15.00t			
12.0	15.00				15.00				15.00				15.00			
14.0	15.00				15.00				15.00				15.00			
16.0	13.50	17.7m×10.55t			13.45				13.30				13.25			
18.0	11.70	10.30			11.60	18.9m×9.60t			11.50				11.40			
20.0	10.25	9.05			10.20	8.95			10.10	20.2m×8.70t			10.00	21.5m×7.90t		
22.0	21.1m×8.75t	8.05			9.05	7.90			8.95	7.80			8.85	7.70		
24.0		7.20			7.50	7.10			8.00	6.95			7.95	6.85		
26.0		6.50	27.0m×5.15t		6.40				7.25	6.30			7.15	6.20		
28.0		27.5m×6.05t	4.90		5.80	28.7m×4.60t			26.9m×6.35t	5.70			6.50	5.60		
30.0			4.45		5.30	4.35			5.20	30.4m×4.10t			29.8m×5.45t	5.10		
32.0			4.10			30.4m×5.20t	4.00		4.75	3.85			4.65	32.1m×3.70t		
34.0			3.75	35.5m×2.80t			3.65			33.3m×4.50t	3.50			4.30	3.40	
36.0				2.75			3.35	37.6m×2.40t			3.25			3.95	3.10	
38.0				2.55			36.9m×3.25t	2.35		3.00	39.7m×1.95t			36.2m×3.95t	2.85	
40.0				2.30				2.15		39.8m×2.80t	1.95			2.65	41.8m×1.60t	
42.0				40.1m×2.30t				1.95			1.75			2.45	1.60	
44.0							43.0m×1.85t				1.60			42.7m×2.40t	1.40	
46.0											45.9m×1.45t				1.25	
48.0															1.15	
48.8															1.10	

Jib Length (m)	31				34		
	90	80	70	65	90	80	70
12.1	14.90				13.0m×11.80t		
14.0	14.55				11.60		
16.0	13.15				11.25		
18.0	11.35				10.90		
20.0	9.90				9.80		
22.0	8.80	22.8m×7.25t			8.70		
24.0	7.85	6.75			7.75	6.65	
26.0	7.05	6.10			7.00	5.95	
28.0	6.40	5.50			6.30	5.40	
30.0	5.85	5.00			5.75	4.90	
32.0	5.30	4.55	33.8m×3.30t		5.25	4.45	
34.0	32.7m×4.65t	4.20	3.30		4.85	4.10	35.6m×2.95t
36.0		3.85	3.00		35.6m×4.00t	3.75	2.90
38.0		3.60	2.75	39.0m×2.20t		3.45	2.65
40.0		39.1m×3.45t	2.55	2.10		3.20	2.40
42.0			2.35	1.90		3.00	2.20
44.0			2.15	1.70			2.00
46.0			45.6m×2.05t	1.55			1.80
48.0				1.40			1.65
48.7				1.35			48.5m×1.60t

Notes: 1. The rated loads shown do not exceed 78% of tipping load with the machine on firm level ground, and are not less than 1.15 times over-front stability stipulated by the mobile crane construction standards.

2. The load to be actually lifted will be the rated load shown minus the weight of all lifting attachments such as a hook.

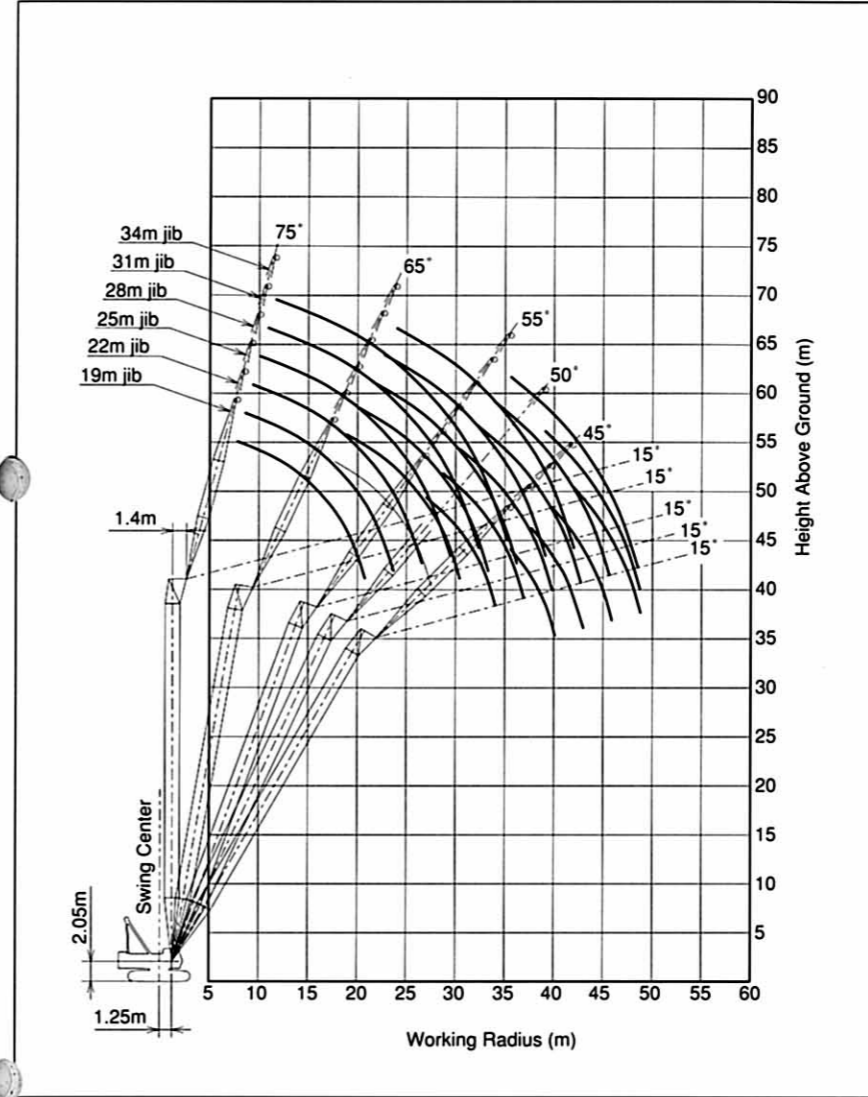
Hook Capacity (ton)	Hook Weight (ton)
22	0.60

3. Working radius is a horizontal distance between swing center of the machine and center of gravity of a load lifted.

4. Counterweight is 31.3 ton.

5. Be sure to fully extend the side frames before operating the machine.

### Working Ranges



Working ranges shown are under unloaded condition.



# 78% Tipping Load (JIS Rating)

## 42m Tower (2-Rope Reeving)

### Rated Loads for Tower Crane

Unit : ton

Jib Length (m)	19				22				25				28			
Tower Angle	90	80	70	60	90	80	70	60	90	80	70	65	90	80	70	65
Working Radius (m)																
8.9	15.00															
9.0	15.00				9.7m×15.00t											
10.0	15.00				15.00				10.5m×15.00t				11.4m×15.00t			
12.0	15.00				15.00				15.00				15.00			
14.0	15.00				15.00				15.00				15.00			
16.0	13.50				13.40				13.30				13.20			
18.0	11.65	18.2m×10.00t			11.60	19.5m×9.00t			11.45				11.40			
20.0	10.25	8.90			10.15	8.75			10.05	20.7m×8.25t			9.95			
22.0	21.1m×8.90t	7.90			9.00	7.75			8.90	7.65			8.85	7.55		
24.0		7.05			7.60	6.95			8.00	6.80			7.90	6.70		
26.0		6.35				6.25			7.20	6.15			7.15	6.05		
28.0		5.80	4.65		5.70	29.7m×4.20t			26.9m×6.45t	5.55			6.45	5.45		
30.0			4.25			5.20	4.10			5.10	31.4m×3.70t		29.8m×5.50t	5.00		
32.0			3.90			30.9m×5.00t	3.75			4.65	3.60			4.55	33.2m×3.30t	
34.0			3.55				3.45			33.8m×4.30t	3.30			4.20	3.20	
36.0			35.0m×3.45t	37.0m×2.30t			3.20			3.05	36.5m×2.50t			3.85	2.95	
38.0				2.15		37.9m×2.95t	39.1m×1.85t			2.80	2.30			36.7m×3.75t	2.70	38.4m×2.10t
40.0				1.95			1.80			2.60	2.10				2.50	1.95
42.0					41.6m×1.85t					40.8m×2.50t	1.90				2.30	1.75
44.0											1.75				43.7m×2.10t	1.55
46.0												44.2m×1.70t				1.40
47.1																1.35

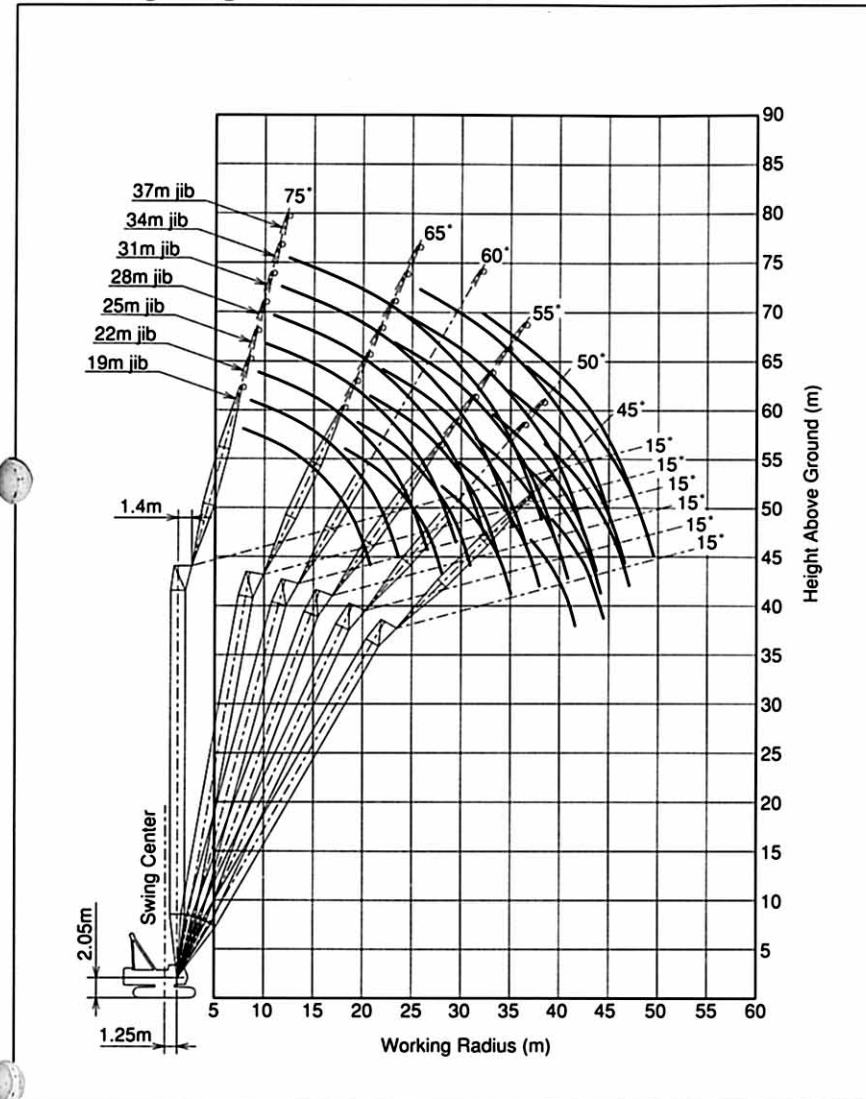
Jib Length (m)	31			34			37		
Tower Angle	90	80	70	90	80	70	90	80	75
Working Radius (m)									
12.0	12.2m×14.25t			13.0m×11.75t			13.8m×9.30t		
14.0	13.95			11.60			9.30		
16.0	13.10			11.25			9.00		
18.0	11.30			10.90			8.70		
20.0	9.90			9.80			8.45		
22.0	8.75	23.3m×6.90t		8.65			8.20		
24.0	7.80	6.60		7.75	24.5m×6.30t		7.65	25.8m×5.80t	
26.0	7.05	5.95		6.95	5.80		6.85	5.70	
28.0	6.40	5.35		6.30	5.25		6.20	5.15	
30.0	5.85	4.90		5.75	4.75		5.65	4.65	
32.0	5.30	4.45		5.25	4.35		5.15	4.25	32.2m×3.65t
34.0	32.7m×4.70t	4.10	34.9m×2.95t	4.85	4.00		4.45	3.90	3.35
36.0		3.75	2.80	35.6m×4.00t	3.65	36.6m×2.60t	3.85	3.55	3.05
38.0		3.50	2.60		3.35	2.40	3.35	3.25	2.80
40.0		39.6m×3.25t	2.35		3.10	2.15	38.5m×3.25t	3.00	2.55
42.0			2.15		2.90	1.95		2.80	2.35
44.0			1.95		42.5m×2.85t	1.75		2.60	2.15
46.0			1.75			1.60		45.4m×2.45t	2.00
48.0			46.6m×1.70t			1.45			1.80
49.5						1.35			49.0m×1.75t

- Notes: 1. The rated loads shown do not exceed 78% of tipping load with the machine on firm level ground, and are not less than 1.15 times over-front stability stipulated by the mobile crane construction standards.
2. The load to be actually lifted will be the rated load shown minus the weight of all lifting attachments such as a hook.

Hook Capacity (ton)	Hook Weight (ton)
22	0.60

3. Working radius is a horizontal distance between swing center of the machine and center of gravity of a load lifted.
4. Counterweight is 31.3 ton.
5. Be sure to fully extend the side frames before operating the machine.

### Working Ranges



Working ranges shown are under unloaded condition.

# 78% Tipping Load (JIS Rating)

## 45m Tower (2-Rope Reeving)

### Rated Loads for Tower Crane

Unit : ton

Jib Length (m)	19				22				25				28		
Tower Angle	90	80	70	60	90	80	70	65	90	80	70	65	90	80	70
Working Radius (m)															
8.9	15.00														
9.0	15.00				9.8m×15.00t										
10.0	15.00				15.00				10.6m×15.00t				11.4m×14.55t		
12.0	15.00				15.00				15.00				14.55		
14.0	15.00				15.00				15.00				14.05		
16.0	13.45				13.35				13.25				13.15		
18.0	11.65	18.7m×9.50t			11.55				11.45				11.35		
20.0	10.20	8.70			10.10	8.60			10.00	21.3m×7.80t			9.95		
22.0	21.1m×9.10t	7.75			9.00	7.60			8.90	7.50			8.80	22.5m×7.15t	
24.0		6.90			7.65	6.80			7.95	6.70			7.90	6.55	
26.0		6.25				6.15			7.20	6.00			7.10	5.90	
28.0		5.65	29.0m×4.20t			5.55			26.9m×6.50t	5.45			6.45	5.35	
30.0		28.5m×5.55t	4.05			5.10	30.7m×3.75t		4.95				29.8m×5.55t	4.85	
32.0			3.70			31.4m×4.80t	3.55		4.55	32.5m×3.35t			4.45		
34.0			3.40				3.25	35.8m×2.50t	4.20	3.10			4.10	34.2m×2.95t	
36.0			3.10				3.00	2.45	34.3m×4.15t	2.85	37.7m×2.05t		3.75	2.75	
38.0			36.1m×3.10t	38.5m×1.75t			2.75	2.20		2.60	2.00		37.2m×3.60t	2.50	
40.0				1.65			39.0m×2.65t	2.00		2.40	1.80			2.25	
42.0				1.45				1.85		41.9m×2.20t	1.60			2.05	
44.0				43.1m×1.40t				42.5m×1.80t			1.45			1.85	
46.0									45.4m×1.35t					44.8m×1.80t	

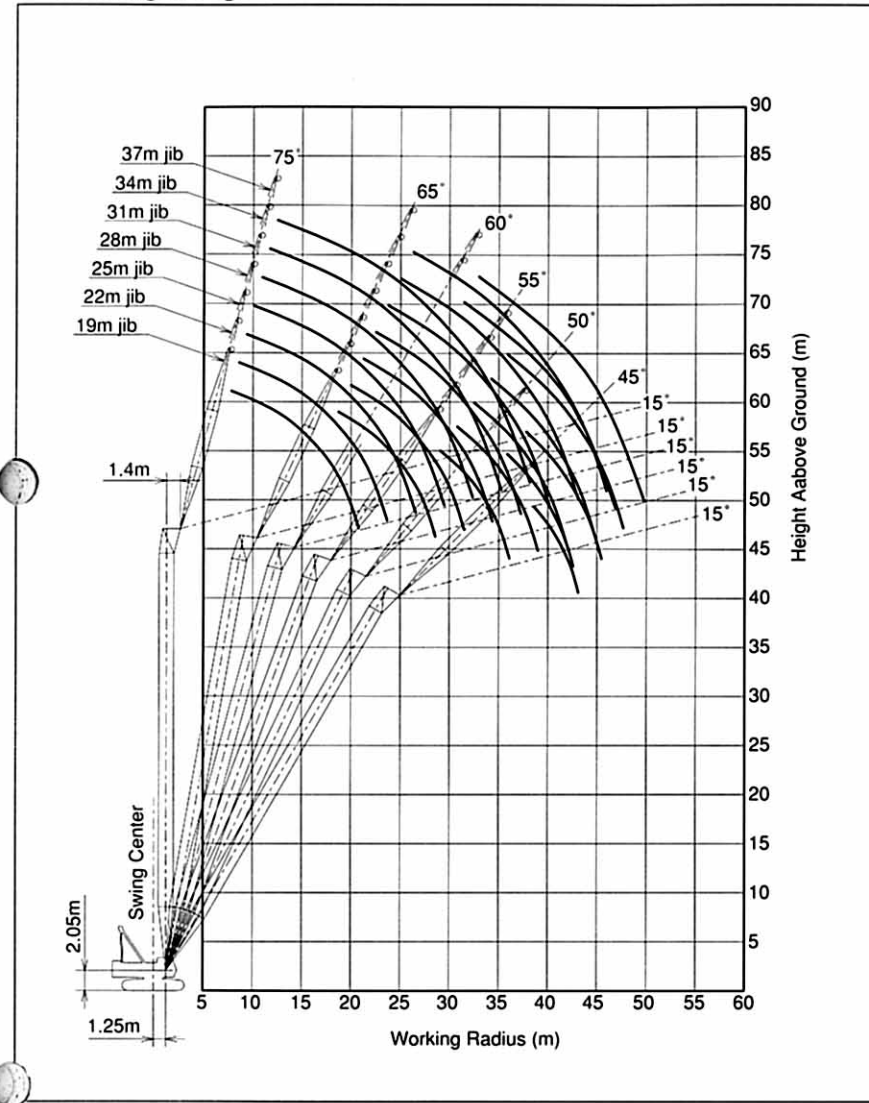
Jib Length (m)	31			34			37		
Tower Angle	90	80	70	90	80	75	90	80	75
Working Radius (m)									
12.0	12.2m×13.55t			13.1m×11.65t			13.9m×9.35t		
14.0	13.00			11.55			9.30		
16.0	12.45			11.20			9.00		
18.0	11.25			10.90			8.70		
20.0	9.85			9.75			8.45		
22.0	8.70	23.8m×6.55t		8.60			8.15		
24.0	7.80	6.45		7.70	25.1m×5.95t		7.60		
26.0	7.00	5.80		6.90	5.70		6.85	26.3m×5.50t	
28.0	6.35	5.25		6.25	5.15		6.20	5.05	
30.0	5.80	4.75		5.70	4.65	31.5m×3.70t	5.65	4.55	
32.0	5.30	4.35		5.25	4.25	3.60	5.05	4.15	33.0m×3.35t
34.0	32.7m×4.75t	4.00	35.9m×2.60t	4.80	3.85	3.30	4.35	3.80	3.20
36.0		3.65	2.60	35.6m×4.05t	3.55	3.00	3.75	3.45	2.90
38.0		3.40	2.35		3.25	2.75	3.25	3.20	2.65
40.0		3.15	2.10		3.00	2.55	38.5m×3.15t	2.95	2.45
42.0		40.1m×3.10t	1.90		2.80	2.35		2.70	2.20
44.0			1.70		43.0m×2.70t	2.15		2.50	2.00
46.0			1.55			1.95		45.9m×2.30t	1.80
48.0			47.6m×1.40t			46.8m×1.90t			1.65
49.7									1.50

- Notes: 1. The rated loads shown do not exceed 78% of tipping load with the machine on firm level ground, and are not less than 1.15 times over-front stability stipulated by the mobile crane construction standards.  
 2. The load to be actually lifted will be the rated load shown minus the weight of all lifting attachments such as a hook.

Hook Capacity (ton)	Hook Weight (ton)
22	0.60

3. Working radius is a horizontal distance between swing center of the machine and center of gravity of a load lifted.  
 4. Counterweight is 31.3 ton.  
 5. Be sure to fully extend the side frames before operating the machine.

### Working Ranges



Working ranges shown are under unloaded condition.

### Tower Boom Construction

Tower Length (m)	27	30	33	36	39	42	45
Lower Tower (6.5m)	1	1	1	1	1	1	1
Upper Tower (2.5m)	1	1	1	1	1	1	1
3m(B) Boom Insert	1	1	1	1	1	1	1
3m Boom Insert	1	1	2	1	1	2	1
6m Boom Insert	2	1	1	2	2	1	2
9m Boom Insert	1	1	1	1	2	2	2
Available Tower Jib	19m	→					
	22m	→					
	25m	→					
	28m	→					
	31m	→					
	37m	→					

### Tower Jib Construction

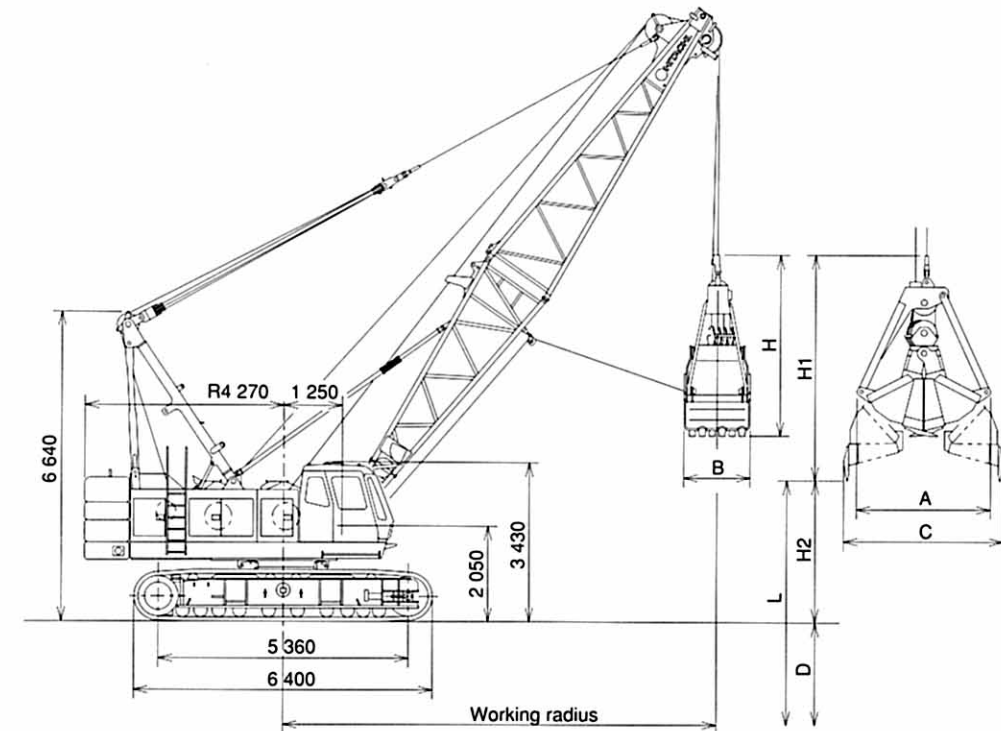
Jib Length (m)	19	22	25	28	31	34	37
Lower Jib (6.5m)	1	1	1	1	1	1	1
Upper Jib (6.5m)	1	1	1	1	1	1	1
3m Jib Insert		1	2	1	1	2	1
6m Jib Insert	1	1	1	2	1	1	2
9m Jib Insert					1	1	1

### Component Weights and Dimensions for Transport

Components	Weight (ton)	Q'ty	Height × Length × Width (m)			Remarks	
Basic Machine	Basic Machine	34.1	1	3.11	13.2	3.28	Including A-frame, lower boom, wire ropes for main hoist and boom hoist Excluding side frames, counterweights and float
	Basic Machine	31.4	1	3.11	7.79	3.28	Including A-frame Excluding side frames, lower boom, wire ropes for main hoist and boom hoist, counterweights and float
	Basic Machine	53.7	1	3.43	13.2	3.40	Including A-frame, lower boom, wire ropes for main hoist and boom hoist and side frames Excluding counterweights
	Side Frame (one side)	9.75	2	1.11	6.40	0.93	
	Counterweight A	8.58	1	0.91	3.48	1.27	
	Counterweight B	7.35	1	0.62	3.48	0.96	
	Counterweight C	7.17	1	0.53	3.48	1.29	
	Counterweight D	8.17	1	0.69	3.48	1.29	
Tower Front	Upper Tower	0.89	1	3.02	2.43	1.62	Excluding links and guide rollers
	3m Tower Insert(B)	0.81	1	2.28	3.14	1.79	Excluding guide sheaves and jib hanger
	Guide Roller	0.23	1	2.45	2.14	0.83	
	Swing Llevers	0.92	1	1.02	5.18	1.68	
	Lower Jib	0.62	1	1.25	6.95	1.68	Including jib stop
	Upper Jib	0.67	1	1.30	7.17	1.25	
	3m Jib Insert	0.21	1	1.34	3.10	1.28	
	6m Jib Insert	0.38	1	1.34	6.10	1.28	
	9m Jib Insert	0.53	1	1.34	9.10	1.28	
	Tower Stop, Right	0.48	1	0.35	6.59	0.33	
	Tower Stop, Left	0.48	1	0.47	6.59	0.29	
	Tower Bridle	0.45	1	0.29	1.85	1.27	Including links for tower
Hanger (Tower Jib)	0.33	1	0.40	1.62	1.28		
Bridle (Tower Jib)	0.31	1	0.69	0.83	0.87		

### Dimensions

Unit : mm



### Specifications

Bucket capacity	m <sup>3</sup>	2.5
Allowable clamshell gross weight	ton	10.0
Boom length	m	13-22
Max. digging depth	m	36
Line speeds*		
Suspend line	m/min	105/60/30
Open/close line	m/min	105/60/30
Boom hoist line	m/min	55
		Rope 26mm dia.
		Rope 20mm dia.
Ground pressure	kPa (kgf/cm <sup>2</sup> )	93.7 (0.96)
Operation weight	ton	92.0 (13m boom+ 2.5m <sup>3</sup> bucket)

- Notes: 1. Data is expressed in SI units, along with conventional units in ( ).  
 2. Other specifications, not shown, are similar to those for the crawler crane.  
 3. Line speeds marked with an asterisk (\*) will vary with the load.

### Clamshell Bucket

Capacity (m <sup>3</sup> )	Weight (ton)	A	B	C	H	H1
2.5	5.5	2 880	1 400	3 450	4 180	5 130

### Specifications

Boom length	m	13				16				19				22			
Boom angle	degree	35	45	55	65	35	45	55	65	35	45	55	65	35	45	55	65
Working radius	m	12.4	11.0	9.3	7.3	14.8	13.1	11.0	8.6	17.3	15.2	12.7	9.9	19.8	17.3	14.4	11.1
Rated load	ton	10	10	10	10	10	10	10	10	10	10	10	10	9.5	10	10	10
Lift L=D+H2	m	38.3	40.1	41.6	42.5	40.1	42.2	44.1	45.5	41.8	44.4	46.5	48.2	43.5	46.5	49.0	51.0
Max. digging depth D	m	36															
Dumping height H2	m	2.3	4.1	5.6	6.5	4.1	6.2	8.1	9.5	5.8	8.4	10.5	12.2	7.5	10.5	13.0	15.0

- Notes: 1. Rated loads for clamshell do not exceed 90% those for crane.  
 2. The rated loads shown are upper limits determined by the following equation. Please select a bucket in such a manner that its rated load does not exceed the rated load shown above, according to kinds of the loads handled.  
 Rated load=Bucket capacity(m<sup>3</sup>) × Specific gravity of load(ton/m<sup>3</sup>)+Bucket weight(ton)  
 Be careful that brake will be overheated if the bucket is too heavy even within the rated loads.  
 3. Working radius is the horizontal distance from the swing center to the center of gravity of lifted load.  
 4. The bucket weight is 5.5 ton max.  
 5. The counterweight is 31.3 ton.  
 6. Be sure to fully extend the side frames before operating the machine.  
 7. Free fall using brake will vary with operating conditions such as bucket weight and work cycle, but its height should be within 10m.



## STANDARD EQUIPMENT

### BASIC MACHINE

#### Undercarriage

- Crawler-type undercarriage (with 850mm shoes)
- Side frame extend cylinder (tandem)

#### Upperstructure

- Front lights (2 lights)
- Rearview mirrors (left and right)
- Centralized lubrication system (for gantry and swing circle)
- Electric refuel device
- Under-cover (at upperstructure bottom)
- Cab climbing steps
- Ultra slow speed controller
- Drum rotation sensing system
- 31.3 ton counterweight
- Standard tool kit

#### Cab

- Intermittent-wipers (front and roof windows)
- Washers (front and roof windows)
- Rolled sunshade (roof window)
- Sunvisor
- Floor mat
- Room light
- Auto-tuning clock radio (AM/FM)
- Cigarette lighter
- Ashtray
- Brake mode selector switch
- Electric tilt-type stand

#### Safety Devices

- Swing lock
- Drum pawl lock (main and auxiliary hoist, and boom hoist)
- Swing alarm
- Fail safe brake system
- Pilot control shut-off lever
- Before-work check monitor

## STANDARD EQUIPMENT FOR RESPECTIVE FRONT ATTACHMENTS

### Crane

- 13m basic boom (lower 6.5m, upper 6.5m)
- Boom stop
- Boom angle indicator
- 90ton hook
- Main hoist rope (26mm dia.×200m)
- Boom hoist rope (20mm dia.×170m)
- Moment limiter
- Overhoist prevention device (including secondary safety device for main hook and boom hoist)

### Full-Luffing Tower Crane

- 45m tower boom (lower:6.5m, 3m×2, 6m×2, 9m×2, upper:2.5m)
- 37m tower jib (lower:6.5m, 3m×1, 6m×2, 9m×1, upper:6.5m)
- Tower stop
- Tower boom angle indicator
- 22ton hook
- Main hoist rope (26mm dia.×260m)
- Tower jib hoist rope (26mm dia.×150m)
- Tower hoist rope (20mm dia.×180m)
- Moment limiter
- Overhoist prevention device (including secondary safety device for hook, tower and jib)
- Anemometer
- Foam type level
- Tower assembling pillow

### Clamshell

- 13m basic boom (lower 6.5m, upper 6.5m)
  - Boom stop
  - Boom angle indicator
  - Open/close and suspend rope disengagement prevention device (for tubular chord boom)
  - Open/close rope (26mm dia.×82m) \*
  - Suspend rope (26mm dia.×70m) \*
  - Hydraulic tagline (10mm dia.×55m rope included) and Boom hoist rope (20mm dia.×170m)
- ※ Two lengths of open/close and suspend ropes are determined based on 22m boom length and 12m digging depth.

## Standard and Optional Equipment

○ : Standard equipment ● : Optional equipment

Front Attachment for Crane	CRAWLER CRANE	FULL-LUFFING TOWER CRANE	CLAMSHELL
90ton hook	○	● *1	—
45ton hook	●	● *2	—
22ton hook	●	○	—
11ton hook	●	●	—
3m boom insert	●	○	●
6m boom insert	●	○	●
9m boom insert	●	●	●
10m jib assembly [10m basic jib, aux. jib hook overhoist prevention device, jib mast, aux. jib rope (26mm dia.×170m), 11ton hook]	●	● *2	—
6m jib insert	●	● *2	—
Aux. jib assembly [aux. jib, aux. jib hook overhoist prevention device, aux. jib rope (26mm dia.×170m), 11ton hook]	●	● *2	—
Aux. jib [aux. jib, aux. jib hook overhoist prevention device]	●	● *2, *3	—
Crane kit (6.5m upper boom, 90 ton hook, boom stop, main hoist hook overhoist prevention device)	—	●	—
<b>Front Attachment for Clamshell</b>			
2.5m <sup>3</sup> clamshell bucket	—	—	●
Open/close and suspend ropes	—	—	●
Hydraulic tagline	—	—	●
<b>Upperstructure</b>			
Drum cooler (for aux. drum)	—	—	●
Side walk (folded type)	●	●	●
Side walk (fixed type with handrails)	●	●	●
Fuel double element	●	●	●
Engine air cleaner double element	●	●	●
<b>Cab</b>			
AM/FM radio	○	○	○
Fan	●	●	●
Loudspeaker	●	●	●
Air conditioner	●	●	●
Heater	●	●	●
<b>Safety Device</b>			
Boom lower limiter	—	—	●
Foam type level (in cab)	●	○	●
Bucket overhoist prevention device	—	—	●
<b>Undercarriage</b>			
Basic machine jack-up device (including side frame extend cylinders)	●	●	●

Notes: \*1. Included in crane kit

\*2. Designed for use with crane kit

\*3. When purchased together with jib assembly, these component, excluding common parts such as hook and wire rope, are added

© Hitachi Construction Machinery Co., Ltd.

Head Office: Nippon Bldg., 6-2 2-chome, Ohtemachi,  
Chiyoda-ku, Tokyo 100-0004, Japan

Telephone: Tokyo (03) 3245-6390

Facsimile : Tokyo (03) 3246-2609

*These specifications are subject to change without notice.  
These specifications are not applicable to European and North America areas.*

KC-E101

Printed in Japan '99,3 (TG/TG,FTs)