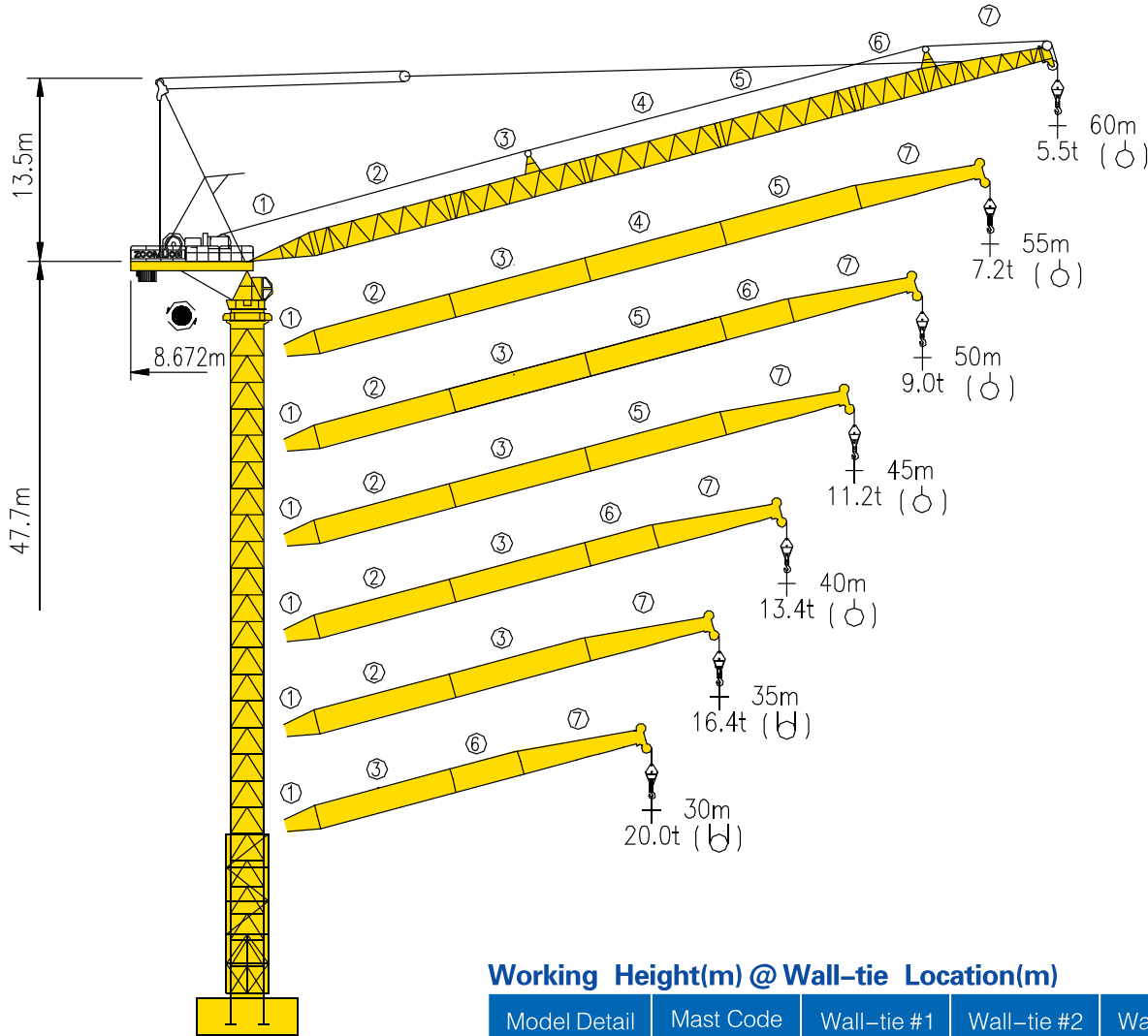


TCR6055-32



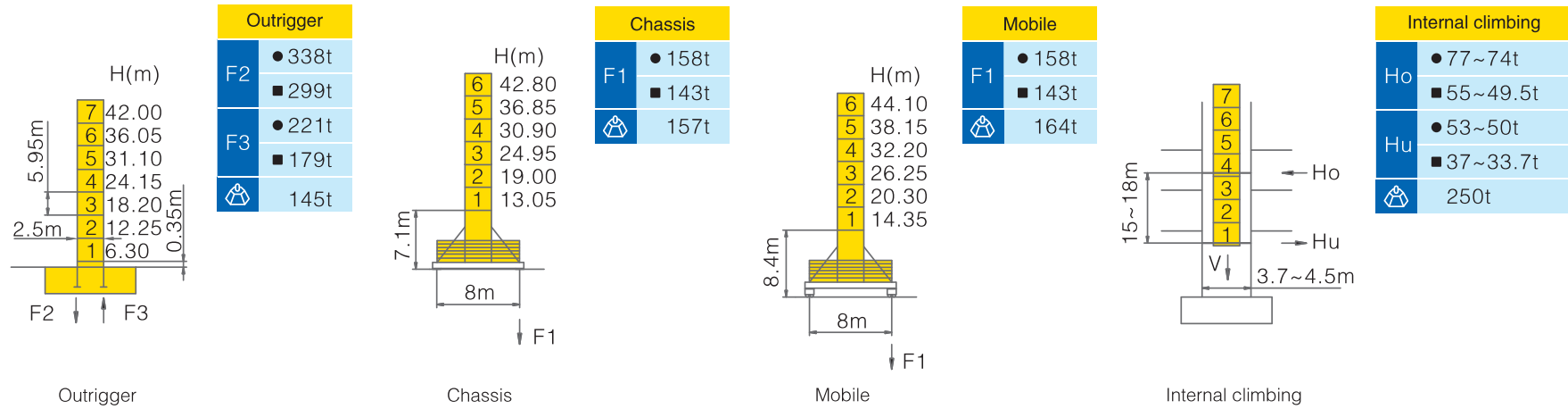
Counter-jib ballast

		(Kg)	PHZ5000	PHZ4000	PHZ2500
60m	8.7m	45000	4	5	2
55m	8.7m	42500	4	5	1
50m	8.7m	41000	4	4	2
45m	8.7m	38500	4	4	1
40m	8.7m	37000	4	3	2
35m	8.7m	35000	2	5	2
30m	8.7m	33000	4	2	2

Working Height(m) @ Wall-tie Location(m)

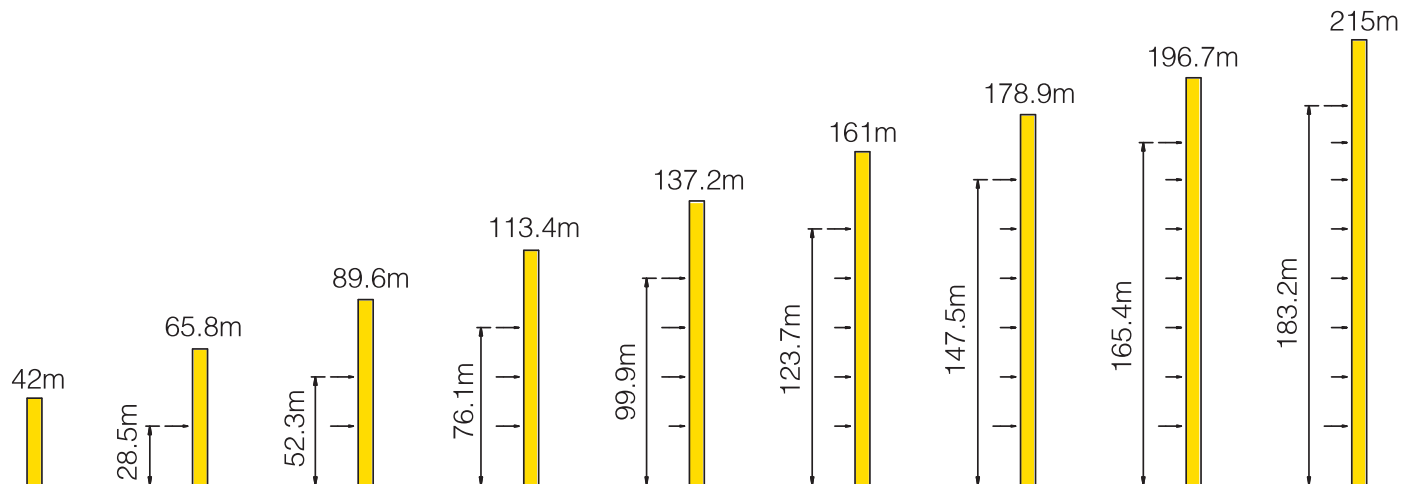
Model Detail	Mast Code	Wall-tie #1	Wall-tie #2	Wall-tie #3	Wall-tie #4	Wall-tie #5	Wall-tie #6	Wall-tie #7	Wall-tie #8
TCR6055-32	KQ1	65.8 @ 28.5	89.6 @ 52.3	113.4 @ 76.1	137.2 @ 99.9	161 @ 123.7	178.9 @ 147.5	196.7 @ 165.4	215 @ 183.2

Masts Reactions



● Reactions in service ■ Reactions out of service
 ⚠ Without load and ballast with longest jib and maximum height
 ⓘ For more erecting solutions, consult us!

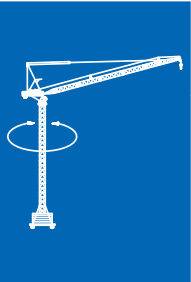
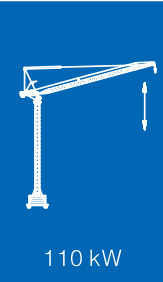


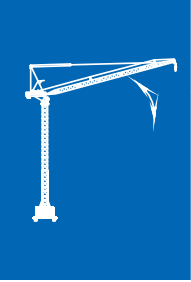
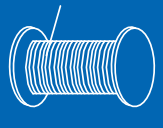






Anchorage



Load diagrams

		Max.Capacity m/t	18	20	23	25	28	30	33	35	38	40	43	45	48	50	53	55	58	60
60m (R=61.6)	⊙	7.9—30.0m 16t	16.0						15.9	14.65	12.93	11.91	10.54	9.75	8.68	8.05	7.16	6.65	5.92	5.50
	⊕	7.6—32.6m 16t	16.0						15.15	13.83	12.15	11.15	9.83	9.06	8.04	7.41	6.58	6.08	5.41	5.12
55m (R=55.98)	⊙	7.4—33.0m 16t	16.0						15.0	13.3	12.3	10.96	10.18	9.11	8.51	7.66	7.20			
	⊕	7.1—25.4m 24t	24.0		22.83	19.63	17.84	15.54	14.24	12.57	11.57	10.30	9.52	8.52	7.94	7.13	6.83			
50m (R=50.80)	⊙	6.9—33.0m 16t	16.0						15.52	13.76	12.77	11.43	10.65	9.59	9.00					
	⊕	6.6—19.3m 32t	32.0	30.69	25.84	23.24	20.07	18.27	16.0	14.71	13.04	12.07	10.77	10.03	9.02	8.62				
45m (R=45.62)	⊙	6.4—33.0m 16t	16.0						15.97	14.29	13.27	11.97	11.2							
	⊕	6.1—19.3m 32t	32.0	31.33	26.37	23.77	20.58	18.83	16.59	15.30	13.59	12.63	11.36	10.83						
40m (R=40.44)	⊙	5.9—33.0m 16t	16.0						14.39	13.4										
	⊕	5.6—19.6m 32t	32.0	31.07	26.27	23.71	20.63	18.87	16.59	15.38	13.74	13.04								
35m (R=35.26)	⊙	5.4—35.0m 16t	16.0																	
	⊕	5.1—19.7m 32t	32.0	31.70	26.98	24.42	21.25	19.59	17.37	16.4										
30m (R=30.08)	⊙	4.9—30.0m 16t	16.0																	
	⊕	4.6—19.7m 32t	32.0	31.45	26.7	24.28	21.26	20.0												

Mechanisms

		Hoisting		QPL3288	
	Slewing	HP55F1-130 HP55F2-130		 110 kW	 16t 0 ~ 35 m/min
	0 ~ 0.7 r/min	3×5.5 kW			 32t 0 ~ 17.5 m/min
	Luffing	BP750		 475m⊙ (5 layers) ⊙ Consult us If overtop	 8t 0 ~ 70 m/min
	3.8 min (15° ~ 87°)	75 kW			 16t 0 ~ 35 m/min
	Travelling	ZAK52 ZBK52		V	 5t 0 ~ 88 m/min
	0 ~ 25m/min	6×5.2 kW			 10t 0 ~ 44 m/min
		380V(+10% - 10%) 50Hz		201.5+6 × 5.2 kW	