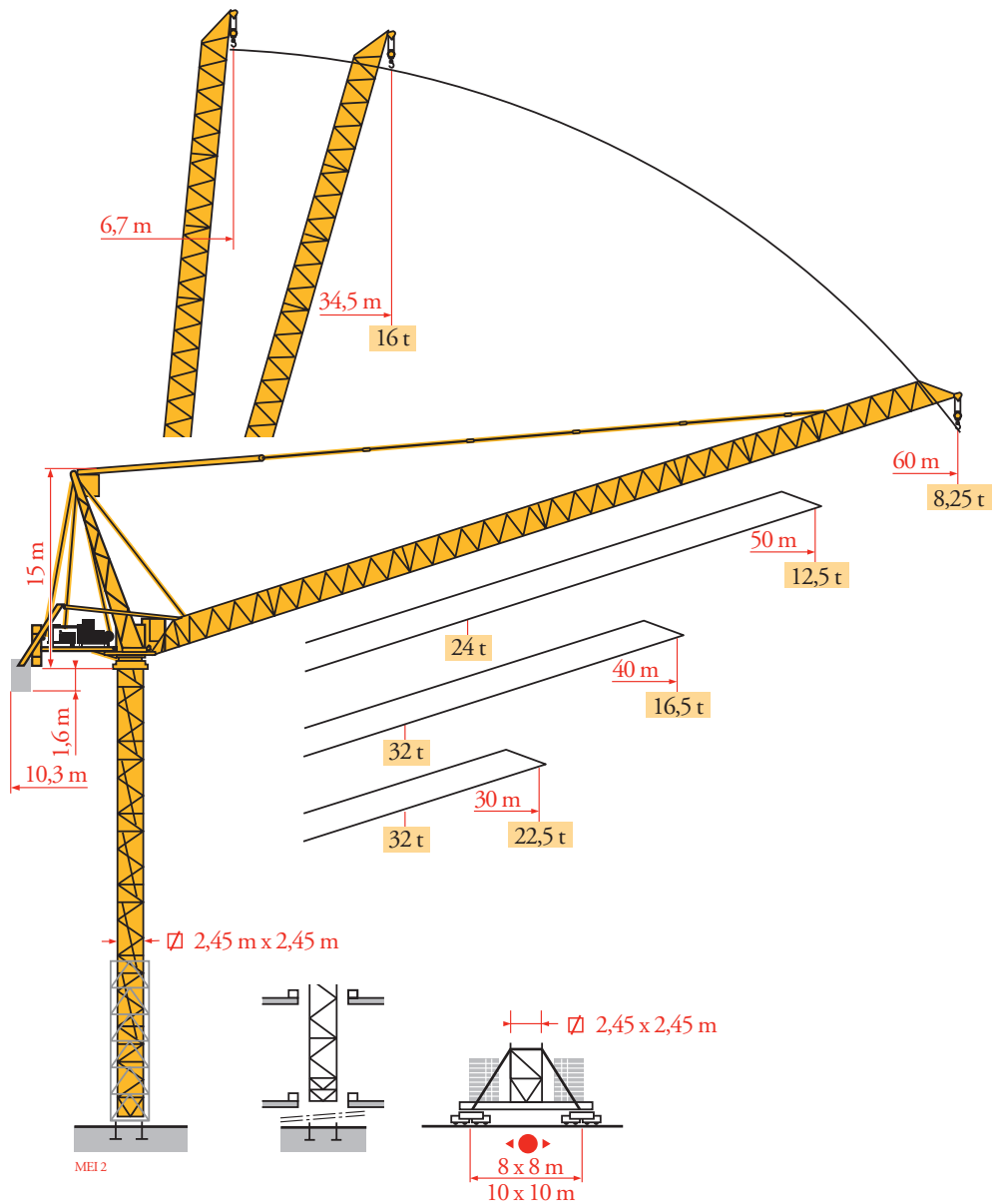


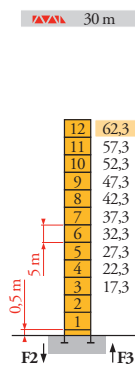
Potain MR 615 H32



Mat / Réactions
 Maste / Eckdrücke
 Masts / Reactions
 Mástil / Reacciones
 Torre / Reazioni
 Tramo / Reações
 Композиции башни /
 Реакции

MEI 3

2,45 m
 30 m ⇒ 60 m

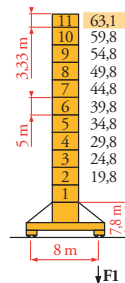


	H (m)	5 m	3,33 m
40 m	59	10	2
50 - 60 m	57,3	11	-

P 800 A

F2	● 327 t
	■ 374 t
F3	● 227 t
	■ 275 t
	▲ 139 t

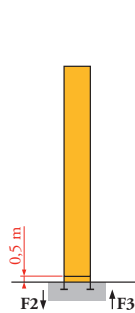
30 m



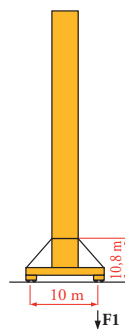
	H (m)	5 m	3,33 m
40 m	58,1	9	1
50 m	56,4	8	2
60 m	58,1	9	1

Y 800 A

F1	● 178 t
	■ 198 t
	▲ 174 t



P 850 A



J 850 A



FR

- Réactions en service
- Réactions hors service
- A vide sans lest (ni train de transport) avec flèche et hauteur maximum
- Nous consulter

DE

- Reaktionskräfte in Betrieb
- Reaktionskräfte außer Betrieb
- Ohne Last, Ballast (und Transportachse), mit Maximalausleger und Maximalhöhe
- Auf Anfrage

EN

- Reactions in service
- Reactions out of service
- Without load, ballast (or transport axles), with maximum jib and maximum height
- Consult us

ES

- Reacciones en servicio
- Reacciones fuera de servicio
- Sin carga, sin lastre, (ni tren de transporte), flecha y altura máxima
- Consultarnos

IT

- Reazioni in servizio
- Reazioni fuori servizio
- A vuoto, senza zavorra (ne assali di trasporto) con braccio massimo e altezza massima
- Consultateci

PT

- Reações em serviço
- Reações fora de serviço
- Sem carga (nem trem de transporte)- sem lastro com lança e altura máximas
- Consultar-nos

RU

- Реакции при работе
- Реакции в покое
- Вес без груза, балласта (или транспортных осей), с максимальной длиной стрелы и максимальной высотой
- Проконсультируйтесь у нас

Mécanismes
Antriebe
Mechanisms
Mecanismos
Meccanismi
Mecanismos
Механизмы

ME13

MR 615 H32 50 Hz												ch - PS	kW	
↑	200 LBR 160	m/min	4,7/47	7,7/77	12/120	20/200	2,35/23,5	3,85/38,5	6/60	10/100	200	150	670 m	
		t	16	9	5	2	32	18	10	4				
↔	180 VBR		1 min 48 s								180	132		
↻	RVF183 Optima+	tr/min U/min - rpm	0 → 1								3 x 12	3 x 9		
↻	Y 800 A	RT 584 AI - 2V	m/min								13,5 - 27	8 x 7	8 x 5,2	
↻	J 850 A	i	m/min								i	i		
CEI 38				IEC 38				kVA						
400 V (+6% -10%) 50 Hz								200 LBR 160 : 375 kVA						
MR 615 H32 60 Hz												ch - PS	kW	
↑	245 LBR 160	m/min	5,7/57	9,2/92	14,4/144	24/240	2,85/28,5	4,6/46	7,2/72	12/120	245	180	670 m	
		t	16	9	5	2	32	18	10	4				
↔	215 VBR		1 min 30 s								215	158		
↻	RVF183 Optima+	tr/min U/min - rpm	0 → 1								3 x 12	3 x 9		
↻	Y 800 A	RT 584 AI - 2V	m/min								16 - 32	8 x 8,4	8 x 6,2	
↻	J 850 A	i	m/min								i	i		
CEI 38				IEC 38				kVA						
480 V (+6% -10%) 60 Hz								245 LBR 160 : 445 kVA						



FR

Levage
Distribution
Orientation
Translation

DE

Heben
Katzfahren
Schwenken
Kranfahren

EN

Hoisting
Trolleying
Slewing
Travelling

ES

Elevación
Distribución
Orientación
Traslación

IT

Sollevamento
Distribuzione
Rotazione
Traslazione

PT

Elevação
Distribuição
Rotação
Translação

RU

Подъем
Перемещение каретки
Поворот
Перемещение крана



Document commercial non contractuel. Pour toute information technique se référer à la notice correspondante.

Unverbindliches Vertriebsdokument. Für technische Informationen, siehe die entsprechenden Anweisungen.

This commercial document is not legally binding. For any technical information, please refer to the corresponding instructions.

Documento comercial no contractual. Para cualquier información técnica, ver la noticia correspondiente.

Documento commerciale non vincolante, per tutte le informazioni tecniche fare riferimento al catalogo istruzioni.

Documento comercial não contratual. Para qualquer informação técnica complementar consultar as respectivas instruções.

Этот коммерческий документ не является юридически обязательным. Для получения технической информации, см. соответствующие инструкции.



Manitowoc - Americas - World Headquarters
2400 S. 44th Street • Manitowoc • WI 54220 USA
Tel: +1 920 684 4410 • Fax: +1 920 652 9778

Manitowoc - Europe, Middle East & Africa
Manitowoc France SAS
18, rue de Charbonnières B.P. 173 • 69132 ECULLY Cedex • FRANCE
Tel: +33 (0)4 72 18 20 20 • Fax: +33 (0)4 72 18 20 00

Manitowoc - Asia Pacific
16F Xu Hui Yuan Building,
1089 Zhongshan No.2 Road (S) • Shanghai 200030 China
Tel: +86 21 6457 0066 • Fax: +86 21 6457 4955

MR 615 H32

REF. 200706 ME14