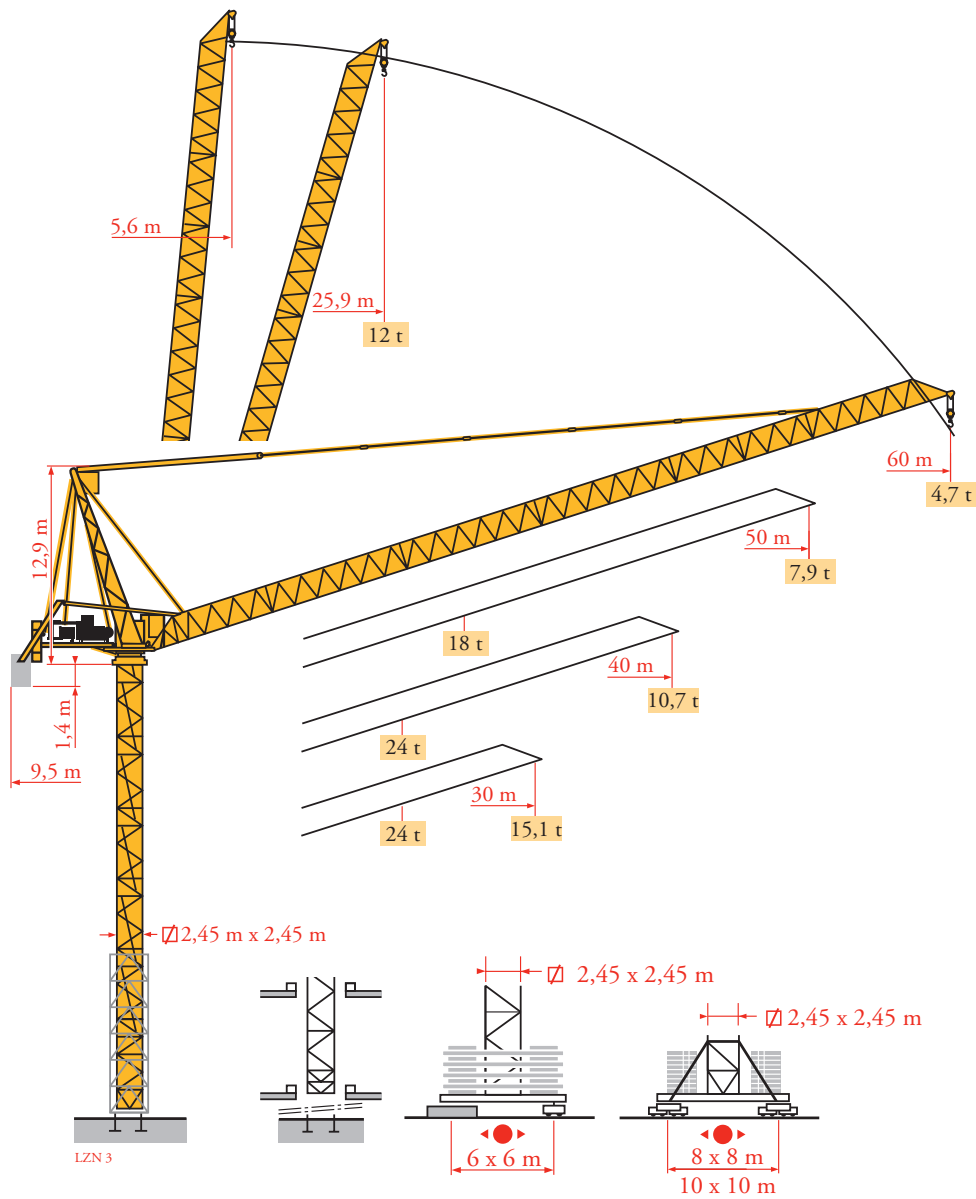


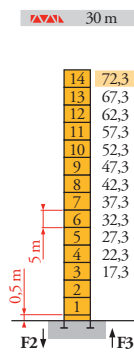
Potain MR 405B H24



Mat / Réactions
 Maste / Eckdrücke
 Masts / Reactions
 Mástil /
 Reacciones
 Torre / Reazioni
 Tramo / Reações
 Композиции
 башни / Реакции

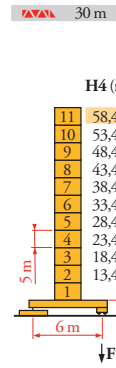
L2N 5

2,45 m
 30 m ⇒ 60 m



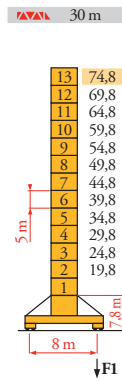
H (m)	5 m	3,33 m
30 m	14	-
40 m	12	2
50 m	11	2
60 m	10	2

P 800 A
 F2 ● 227 t
 ■ 360 t
 F3 ● 153 t
 ■ 292 t
 104 t



H4 (m)	H3 (m)	5 m	3,33 m
30 m	58,4	-	11
40 m	53,4	-	10
50 m	51,7	-	9
60 m	48,4	-	8

ZX 6830
 F1 ● 147 t
 ■ 177 t
 106 t



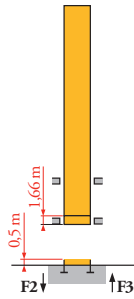
H (m)	5 m	3,33 m
30 m	13	-
40 m	12	-
50 m	10	2
60 m	9	2

Y 800 A
 F1 ● 160 t
 ■ 202 t
 138 t

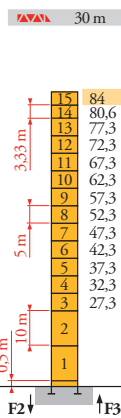
ZX 6830

3 F1 H = H3

4 F1 H = H4

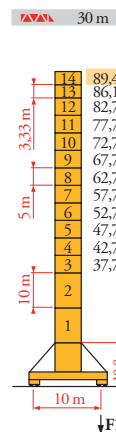


B 800 B
 i



H (m)	10 m	5 m	3,33 m
30 m	84	2	11
40 m	80,6	2	11
50 m	75,6	2	10
60 m	70,6	2	9

P 850 A
 F2 ● 274 t
 ■ 505 t
 F3 ● 184 t
 ■ 423 t
 120 t



H (m)	10 m	5 m	3,33 m
30 m	89,4	2	10
40 m	86,1	2	10
50 m	82,7	2	10
60 m	79,4	2	8

J 850 A
 F1 ● 172 t
 ■ 252 t
 173 t

FR

● Réactions en service
 ■ Réactions hors service

A vide sans lest (ni train de transport) avec flèche et hauteur maximum

i Nous consulter

DE

Reaktionskräfte in Betrieb
 Reaktionskräfte außer Betrieb

Ohne Last, Ballast (und Transportachse), mit Maximalausleger und Maximalhöhe

Auf Anfrage

EN

Reactions in service
 Reactions out of service

Without load, ballast (or transport axles), with maximum jib and maximum height

Consult us

ES

Reacciones en servicio
 Reacciones fuera de servicio

Sin carga, sin lastre, (ni tren de transporte), flecha y altura máxima

Consultarnos

IT

Reazioni in servizio
 Reazioni fuori servizio

A vuoto, senza zavorra (ne assali di trasporto) con braccio massimo e altezza massima

Consultateci

PT

Reações em serviço
 Reações fora de serviço

Sem carga (nem trem de transporte)- sem lastro com lança e altura máximas

Consultar-nos

RU

Реакции при работе
 Реакции в покое

Вес без груза, балласта (или транспортных осей), с максимальной длиной стрелы и максимальной высотой

Проконсультируйтесь у нас

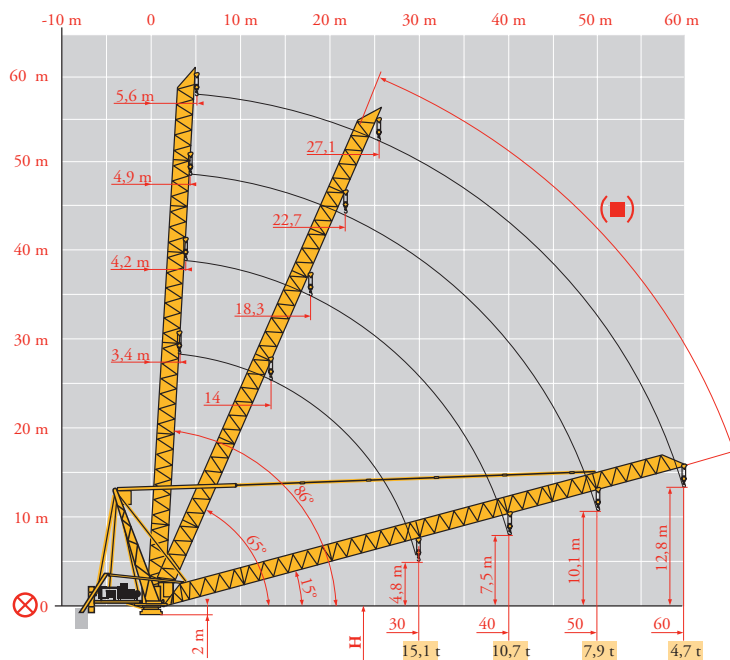
Courbes de charges
 Lastkurven
 Load diagrams
 Curvas de cargas
 Curve di carico
 Curva de cargas
 Диаграммы
 грузоподъемностей

LZN 3

60 m	5,6	▶	25,9	27	30	32	35	37	40	42	45	47	50	52	55	57	60 m
			12	11,5	10,3	9,6	8,7	8,2	7,5	7,1	6,6	6,2	5,8	5,6	5,2	5	4,7 t
50 m	4,9	▶	23,2	25	27	30	34,1	35	37	40	42	45	47	50 m			
			18	16,7	15,4	13,7	12	11,7	11	10,1	9,6	8,9	8,5	7,9 t			
40 m	4,2	▶	18,6	20	22	25	27	30	32	35	36	40 m					
			24	22,3	20,2	17,6	16,3	14,6	13,6	12,4	12	10,7 t					
30 m	3,4	▶	19,3	20	22	25	27	30 m									
			24	23,1	20,9	18,3	16,9	15,1 t									

Flèche relevée
 Ausleger in Steilstellung
 Luffing jib
 Flecha izada
 Braccio impennato
 Lança inclinada
 Маховая стрела

LZN 3



- | | | | | | | | |
|--|--------------------------------------|-----------------------------------|------------------------------|---|------------------------------------|---|---------------------------------|
| | FR
Axe articulation flèche | DE
Ausleger-gelenkachse | EN
Jib hinge shaft | ES
Eje articulación de flecha | IT
Asse cerniera braccio | PT
Eixo de articulação da lança | RU
Ось шарнира стрелы |
| | Position girouette | Windfreistellung | Weathervaning position | Posición eleta | Libera rotazione | Posição em catavento | Флюгирование |

Mécanismes
Antriebe
Mechanisms
Mecanismos
Meccanismi
Mecanismos
Механизмы

LZN 5

MR 405 B H24 - 50 Hz			U				UU				ch - PS hp	kW		
	90 LBR 60 L910	m/min	2,8/28	4,4/44	7/70	11/111	1,4/14	2,2/22	3,5/35	5,5/55	90	66	910 m	
		t	12	7,3	4,2	2,25	24	14,6	8,4	4,5				
	62 VBR	$\frac{m}{min}$ U/min - rpm	2 min 48 s									62	45	
	R - 8,8	m/min	0 → 0,67									2 x 6	2 x 4,4	
	Y 800 A	RT584 A1 - 2V	13,5 - 27									8 x 7	8 x 5,2	
	J 850 A													
	ZX 6830	RT 664 A2B - 2V	16 - 32									6 x 7	6 x 5,2	
CEI 38	IEC 38	400 V (+6% -10%)	kVA		170 kVA									

MR 405 B H24 - 60 Hz			U				UU				ch - PS hp	kW		
	108 LBR 60 L910	m/min	3,3/33	5,3/53	8,4/84	13,3/133	1,6/16,5	2,7/26,5	4,2/42	6,7/67	108	79	910 m	
		t	12	7,4	4,2	2,25	24	14,8	8,4	4,5				
	74 VBR	$\frac{m}{min}$ U/min - rpm	2 min 20 s									74	54	
	R - 10,5	m/min	0 → 0,8									2 x 7,2	2 x 5,3	
	Y 800 A	RT584 A1 - 2V	16 - 32									8 x 8,4	8 x 6,2	
	J 850 A													
	ZX 6830	RT 664 A2B - 2V	19 - 38									6 x 8,4	6 x 6,2	
CEI 38	IEC 38	480 V (+6% -10%)	kVA		205 kVA									

	FR	DE	EN	ES	IT	PT	RU
	Levage	Heben	Hoisting	Elevación	Sollevamento	Elevação	Подъем
	Distribution	Katzfahren	Trolleying	Distribución	Distribuzione	Distribuição	Перемещение каретки
	Orientation	Schwenken	Slewing	Orientación	Rotazione	Rotação	Поворот
	Translation	Kranfahren	Travelling	Traslación	Traslazione	Translação	Перемещение крана



Document commercial non contractuel. Pour toute information technique se référer à la notice correspondante.

Unverbindliches Vertriebsdokument. Für technische Informationen, siehe die entsprechenden Anweisungen.

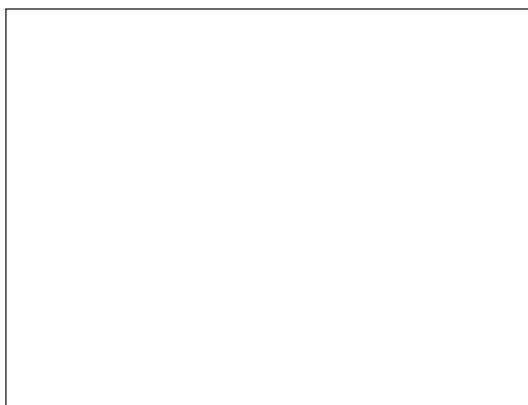
This commercial document is not legally binding. For any technical information, please refer to the corresponding instructions.

Documento commercial no contractual. Para cualquier información técnica, ver la noticia correspondiente.

Documento commerciale non vincolante, per tutte le informazioni tecniche fare riferimento al catalogo istruzioni.

Documento comercial não contratual. Para qualquer informação técnica complementar consultar as respectivas instruções.

Этот коммерческий документ не является юридически обязательным. Для получения технической информации, см. соответствующие инструкции.



Manitowoc - Americas - World Headquarters
2400 S. 44th Street • Manitowoc • WI 54220 USA
Tel: +1 920 684 4410 • Fax: +1 920 652 9778

Manitowoc - Europe, Middle East & Africa
Manitowoc France SAS
18, rue de Charbonnières B.P. 173 • 69132 ECULLY Cedex • FRANCE
Tel: +33 (0)4 72 18 20 20 • Fax: +33 (0)4 72 18 20 00

Manitowoc - Asia Pacific
16F Xu Hui Yuan Building,
1089 Zhongshan No.2 Road (S) • Shanghai 200030 China
Tel: +86 21 6457 0066 • Fax: +86 21 6457 4955

MR 405B H24

REF. 2003 48 LZN 6