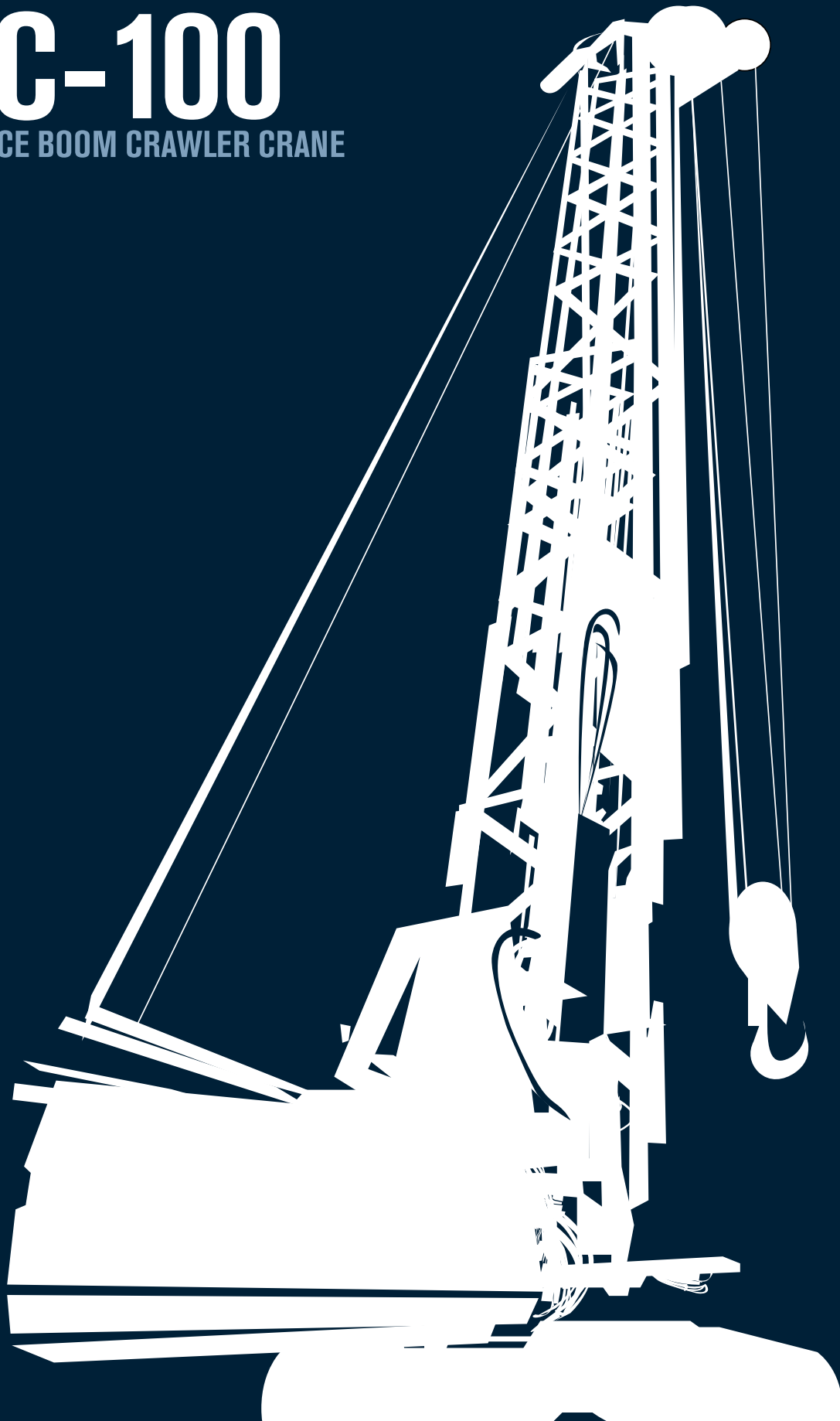


SC-100

LATTICE BOOM CRAWLER CRANE



SC-100

TECHNICAL DESCRIPTION

A new model

Crawler mounted crane designed to meet features and standards of lifting units adding characteristics of the cranes for foundations jobs. Easy transport fitting.

Main features

- Multi element lattice boom
- Boom hoist by a multiple reeving winch
- Engine DEUTZ TCD 2015
- Controlled descent or free fall type winches
- Comfortable operator cab
- Mechanical and hydraulic fittings for casing oscillator
- Tracks removable variable gauge
- Self assembling tracks
- Self-lifting counterweight
- Wide range of optionals

Notes

- 1- The rated loads are based on machine at firm level ground and without travelling.
- 2- The rated loads are in metric tons valid for 360° degree swing.
- 3- The rated loads are calculated to comply DIN 15018, DIN 15019 and do not exceed 75% of tipping load.
- 4- The rated loads include the weight of all lifting attachments.
- 5- The users derate or limit the lifted loads to allow for adverse conditions such as: soft or uneven ground, out of level, wind, side loads, pendulum action, jerking or sudden stopping of load, inexperience of personnel, and possible travelling with a load.
- 6- The max line pull for crane operation is only approximate. It must be referred to used rope with end terminations, in accordance to CEE directive.
- 7- Lifting chart values must be applied in complete optimum boom assembly and head with plastic sheaves.

Engine		
Make and model		Deutz TCD 2015
Rated Power SAE J 1995	kW (HP)	480 (645)
Hydraulic System		
Max flow for main pumps	l/min (MPa)	2 x 405
Max work pressure	Mpa	30
Boom		
Tubular lattice boom	mm	1350 x 1350
Max boom length	m	42
Winches free fall		
		LFF 225
Line pull nominal	kN	305
Rope diameter	mm	34
Winches controlled descent		
		LW 370
Line pull nominal	kN	370
Rope diameter	mm	34
Turret		
Max width (with counterweight)	mm	3500
Swing speed	rpm	2
Swing tail radius	mm	5000
Undercarriage		
Type	variable gauge, removable side, self-assembling	
Shoes width	mm	1000 triple grouser
Center of wheels	mm	5320
Max track length	mm	6385
Track gauge retracted (track gauge extended)	mm	2500 (4100)
Retracted tracks width (extended tracks width)	mm	3500 (5100)
Max travelling speed	km/h	1,7
Weight & Dimensions		
In working conditions	t	95
Transport configuration w/o counterweight and w/o tracks	t	50
Counterweight	t	25
Max transport width	mm	3500
Max transport height (w/o tracks)	mm	3550

SC-100

LOAD CHART

Winch 255 kN Crane SC90 (with jib installed)

		Boom Length (m)									
Boom	12m	15m	18m	21m	24m	27m	30m	33m	36m	39m	42m
Radius (m)	Capacity (t)										
3.8	100.00	-	-	-	-	-	-	-	-	-	-
4.0	100.00	-	-	-	-	-	-	-	-	-	-
4.25	-	89.10	-	-	-	-	-	-	-	-	-
4.5	100.00	89.10	-	-	-	-	-	-	-	-	-
4.75	-	-	86.30	-	-	-	-	-	-	-	-
5.0	86.30	82.50	79.60	60.50	-	-	-	-	-	-	-
5.5	72.90	71.20	68.60	60.50	60.50	-	-	-	-	-	-
6.0	62.90	62.50	60.20	60.50	60.20	-	-	-	-	-	-
6.5	55.30	55.40	53.50	54.20	53.20	52.30	51.40	-	-	-	-
7.0	49.20	49.20	48.10	48.10	47.60	46.70	45.90	46.00	31.30	31.10	-
7.5	44.20	44.20	43.60	43.30	43.00	42.10	41.30	-	-	-	-
8.0	40.103	40.10	39.70	39.20	39.00	38.20	37.50	37.40	31.30	31.10	30.80
8.5	36.60	36.60	36.20	35.80	35.70	34.90	-	-	-	-	-
9.0	33.60	33.60	33.30	32.80	32.80	32.10	31.40	31.20	29.30	28.90	28.56
9.5	31.00	31.10	30.70	30.30	30.20	29.60	-	-	-	-	-
10.0	28.70	28.80	28.50	28.10	28.00	27.40	26.90	26.50	26.90	26.75	25.90
10.5	26.80	26.80	26.50	26.10	26.10	-	-	-	-	-	-
11.0	24.90	25.00	24.80	24.40	24.30	-	23.30	22.90	23.40	23.20	22.40
11.5	23.40	23.40	23.20	22.90	22.80	23.80	-	-	-	-	-
12.0	21.90	22.00	21.80	21.40	21.40	-	20.40	20.00	20.30	20.10	19.40
12.5	20.30	20.70	20.50	-	-	20.90	-	-	-	-	-
13.0	-	19.50	19.40	19.00	19.00	-	18.10	17.70	17.90	17.60	16.90
13.5	-	18.50	18.30	-	-	18.50	-	-	-	-	-
14.0	-	17.50	17.40	17.00	17.00	-	16.10	15.70	15.80	15.50	15.00
14.5	-	16.60	-	-	-	16.50	-	-	-	-	-
15.0	-	15.70	15.60	15.30	15.30	-	14.40	14.00	14.10	13.80	13.30
16.0	-	-	14.20	13.90	13.90	14.80	13.00	12.60	12.60	12.30	11.90
17.0	-	-	12.90	12.60	12.60	13.40	11.80	11.30	11.40	11.00	10.60
17.5	-	-	12.30	-	-	12.10	-	-	-	-	-
18.0	-	-	-	11.50	11.50	-	10.70	10.20	10.30	9.90	9.50
19.0	-	-	-	10.50	10.50	11.00	9.70	9.30	9.30	8.90	8.60
20.0	-	-	-	9.70	9.70	10.00	8.90	8.40	8.50	8.00	7.60
20.5	-	-	-	9.30	-	9.10	-	-	-	-	-
21.0	-	-	-	-	-	-	8.10	7.60	7.70	7.20	6.90
22.0	-	-	-	-	8.20	8.40	7.40	6.90	6.90	6.50	6.20
23.0	-	-	-	-	7.50	7.70	6.70	6.30	6.30	5.80	5.50
24.0	-	-	-	-	7.00	7.20	6.20	5.80	5.70	5.20	5.00
25.0	-	-	-	-	6.40	6.60	5.60	5.20	5.20	-	4.40
25.5	-	-	-	-	5.90	-	-	-	-	-	-
26.0	-	-	-	-	5.60	5.20	4.70	4.70	4.70	4.20	-
27.0	-	-	-	-	5.00	4.70	4.30	-	-	-	-
28.0	-	-	-	-	4.30	3.90	3.80	3.30	3.30	3.10	-
30.0	-	-	-	-	-	3.10	3.00	2.60	2.60	2.30	-
31.0	-	-	-	-	-	2.80	-	-	-	-	-
32.0	-	-	-	-	-	-	2.40	1.90	1.90	1.70	-
33.0	-	-	-	-	-	-	2.10	-	-	-	-
34.0	-	-	-	-	-	-	-	-	1.40	1.20	-
36.0	-	-	-	-	-	-	-	-	0.90	0.70	-
38.0	-	-	-	-	-	-	-	-	-	0.20	-
Line Parts	6	6	6	4	4	4	4	4	2	2	2

Winch 255 kN Crane SC90 (on jib)

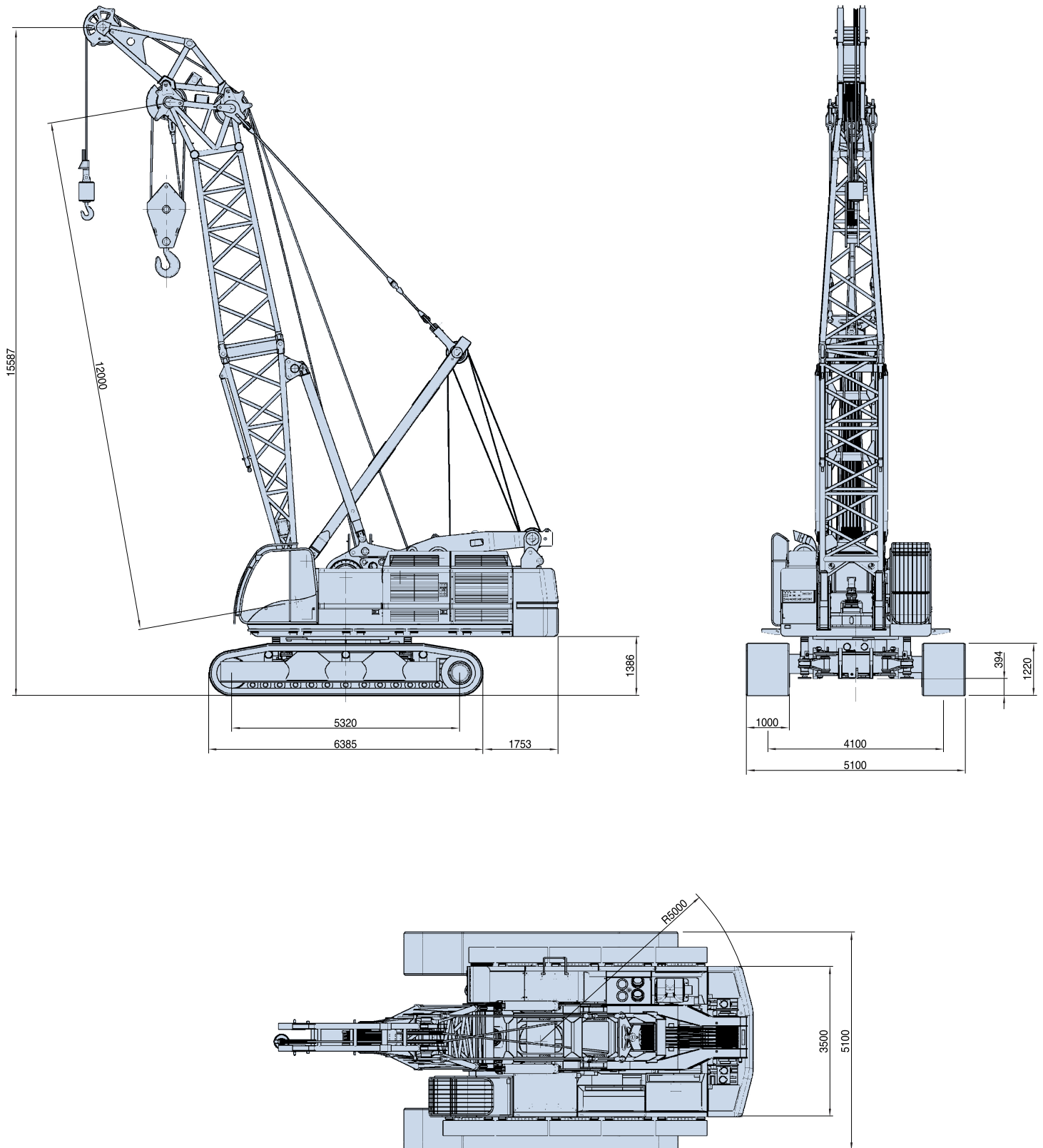
		Boom Length (m)									
Boom	12m	15m	18m	21m	24m	27m	30m	33m	36m	39m	42m
Radius (m)	Capacity (t)										
5.0	18.00	-	-	-	-	-	-	-	-	-	-
6.0	18.00	18.00	-	-	-	-	-	-	-	-	-
6.5	18.00	18.00	18.00	-	-	-	-	-	-	-	-
7.0	18.00	18.00	18.00	18.00	18.00	-	-	-	-	-	-
7.5	18.00	18.00	18.00	18.00	18.00	-	-	-	-	-	-
8.0	18.00	18.00	18.00	18.00	18.00	18.00	-	-	-	-	-
8.5	18.00	18.00	18.00	18.00	18.00	18.00	18.00	-	-	-	-
9.0	18.00	18.00	18.00	18.00	18.00	18.00	18.00	18.00	18.00	-	-
9.5	18.00	18.00	18.00	18.00	18.00	18.00	18.00	18.00	-	-	18.00
10.0	18.00	18.00	18.00	18.00	18.00	18.00	18.00	18.00	18.00	18.00	17.79
10.5	18.00	18.00	18.00	18.00	18.00	18.00	18.00	18.00	-	-	17.48
11.0	18.00	18.00	18.00	18.00	18.00	18.00	18.00	18.00	18.00	18.00	17.23
11.5	18.00	18.00	18.00	18.00	18.00	-	18.00	-	-	-	15.09
12.0	18.00	18.00	18.00	17.54	17.54	16.41	16.01	15.44	15.14	14.63	14.37
12.5	17.23	17.74	17.03	16.26	16.26	-	-	-	-	-	13.20
13.0	16.06	16.52	15.85	15.14	15.14	14.07	13.76	13.20	12.94	12.43	12.18
13.5	14.98	15.44	14.83	14.12	14.12	-	-	-	-	-	-
14.0	14.07	14.47	13.86	13.25	13.25	12.23	11.92	11.41	11.16	10.65	10.44
14.5	13.20	13.56	13.05	-	-	-	-	-	-	-	-
15.0	12.38	12.74	12.28	11.67	11.67	10.75	10.44	9.93	9.68	9.22	9.02
15.5	11.67	12.03	11.57	-	-	-	-	-	-	-	-
16.0	11.01	11.31	10.90	10.34	10.34	9.47	9.17	8.71	8.45	8.00	7.79
16.5	10.39	10.70	-	-	-	-	-	-	-	-	-
17.0	9.83	10.09	9.73	9.22	9.22	8.40	8.15	7.69	7.43	6.97	6.77
17.5	-	9.53	-	-	-	-	-	-	-	-	-
18.0	-	-	8.76	8.30	8.30	7.48	7.23	6.77	6.57	6.11	5.90
19.0	-	-	7.89	7.43	7.43	6.72	6.46	6.01	5.80	5.34	5.14
20.0	-	-	7.08	6.72	6.72	6.01	5.75	5.34	5.14	4.68	4.47
20.5	-	-	-	-	-	-	-	-	-	-	-
21.0	-	-	-	6.06	6.06	5.39	5.14	4.73	4.53	4.12	3.91
22.0	-	-	-	5.44	5.44	4.83	4.63	4.22	4.02	3.56	3.40
23.0	-	-	-	4.93	4.93	4.32	4.12	3.71	3.51	3.05	2.84
24.0	-	-	-	-	-	3.91	3.71	3.30	3.10	2.59	2.33
25.0	-	-	-	-	-	3.51	3.30	2.84	2.64	2.13	1.92
26.0	-	-	-	-	-	3.15	2.94	2.43	2.23	1.72	1.52
27.0	-	-	-	-	-	2.79	2.54	2.08	1.87	1.36	1.16
28.0	-	-	-	-	-	2.38	2.23	1.72	1.52	1.01	0.80
29.0	-	-	-	-	-	-	1.87	1.41	1.21	0.70	0.50
30.0	-	-	-	-	-	-	1.57	1.11	0.90	0.39	0.19
31.0	-	-	-	-	-	-	1.26	0.85	0.65	0.14	-
32.0	-	-	-	-	-	-	-	0.55	0.39	-	-
Line Parts	1	1	1	1	1	1	1	1	1	1	1

Figures



SC-100

DIMENSIONS







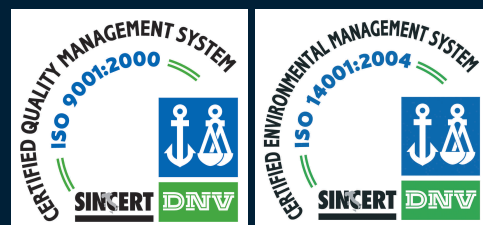


SOILMEC distributes machinery and structures all over the world, supported by SOILMEC subsidiary companies and representative offices:

SOILMEC LTD - Peterborough - U.K.
SOILMEC MISR S.A.E. Co. - Il Cairo - Egypt
SOILMEC (H.K.) Limited - Hong Kong
SOILMEC JAPAN CO LTD - Tokio - Japan
SOILMEC S.P.A. - Beijing Repr. Office - P.R. China
SOILMEC FAR EAST PTE.LTD - Singapore
SOILMEC ARABIA LLC - Jeddah - Saudi Arabia
SOILMEC EMIRATES - Dubai - U.A.E.
SOILMEC GULF - Dubai - U.A.E.
SOILMEC FRANCE S.A.S. - Paris - France
SOILMEC INDIA - Mumbai - India
SOILMEC S.P.A. - Moscow Repr. Office - Russia
SOILMEC DEUTSCHLAND GmbH - Drolshagen - Deutschland
SOILMEC NORTH AMERICA - Boston - U.S.A.
SOILMEC AUSTRALIA - Sydney - Australia
PSM S.R.L. - Treviso - Italy
WATSON INC. - Texas - U.S.A.

CERTIFIED QUALITY SYSTEM

In 1990 Soilmec was awarded with the certification of its Quality System complying with ISO 9001:2000 and ISO 14001:2004 standards.



SOILMEC S.p.A.

Drilling and Foundation Equipment

5819, via Dismano
 47522 Cesena (FC) - Italy
 tel. +39-0547-319111
 fax +39-0547-318548
[http:// www.soilmec.it](http://www.soilmec.it)
 e-mail: soilmec@soilmec.it

All technical data are purely indicative and subject to change without notice