

GENERAL SPECIFICATIONS

	AM650		AM855	
Height to Bottom of Platform*	49.8 ft	15.2 m	54.8 ft	16.7 m
Working Height*	54.8 ft	16.7 m	59.8 ft	18.2 m
Reach from Centerline of Rotation				
Lower Boom at 0°	41.8 ft	12.7 m	46.8 ft	14.3 m
Lower Boom at 100°	33.2 ft	10.1 m	34.7 ft	10.6 m
Stowed Travel Height*	11.3 ft	3.4 m	11.3 ft	3.4 m
Rotation	Continuous	Continuous	Continuous	Continuous
Lower Boom Articulation	100°	100°	100°	100°
Upper Boom Articulation	230°	230°	230°	230°
Hydraulic Platform Rotation	94°	94°	94°	94°
Platform Capacity				
Single One-Man, Side-Mounted	350 lb	159 kg	350 lb	159 kg
Dual One-Man, Side-Mounted	600 lb	272 kg	600 lb	272 kg
Single Two-Man, Side-Mounted	700 lb	318 kg	700 lb	318 kg
Lower Boom Isolation	24 in	610 mm	24 in	610 mm
Upper Boom Isolation (min)	120 in	3048 mm	150 in	3810 mm

* Based on 36-in (914-mm) chassis frame height

STANDARD FEATURES

- Platform - Fiberglass Side-Mounted with Platform Tilt, 24 x 30 x 42 in (610 x 762 x 1067 mm)
- Material Handling System - Hydraulic Tilting Two-Section Jib, Winch & Tool Circuit

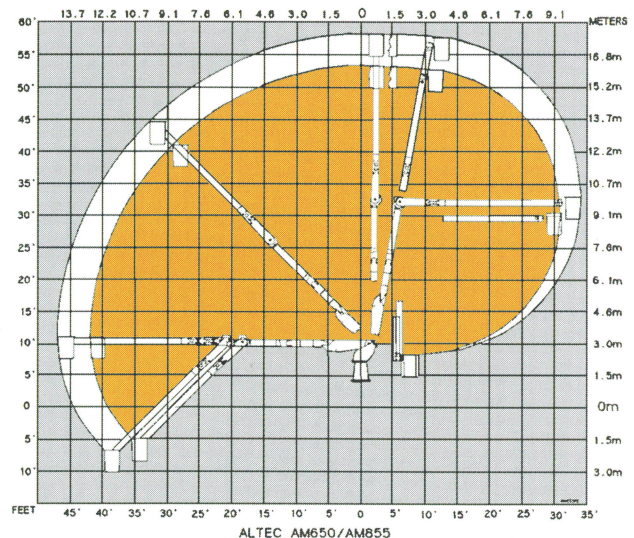
OPTIONS

- Platforms - Dual Fiberglass Side-Mounted with Platform Tilt, 24 x 30 x 42 in (610 x 762 x 1067 mm)
- Dual Controls - One at Each Platform
- Engine Start/Stop
- Secondary Stowage System
- Outriggers - "A" Frame or Radial
- Outrigger - Boom Interlock
- Tool Circuit at Tailshelf
- Fall Protection System
- Wheel Chocks



The AM650/AM855's side-by-side boom stow design offers low travel height with a low center of gravity and provides easy platform entry.

REACH DIAGRAM



Altec Aerial Devices meet or exceed all applicable ANSI Standards as of the date of manufacture. Altec reserves the right to improve models and change specifications without notice or obligation.

Altec Sales and Service



Manufacturing and Service Facilities Located Throughout the United States and Canada

Altec Industries, Inc.

Post Office Box 10264
Birmingham, Alabama 35202
Phone 205/991-7733
Fax 205/991-9993

Altec AM650/AM855-5M-2/01