

"Bringing Innovation to Construction"



This versatile unit is setting the global standard in self erecting tower cranes. Some of the key features are:

- Jib 147' 8", clearance under hook 80'
- Capacity at inner limit 11,025 lbs
- Capacity at outer limit 2,205 lbs
- Power lift offers up to 20% more capacity when needed
- Can be luffed at 10° or 30°
- No concrete base required
- Footprint is only 13' x 13'
- Galvanized structure
- Site or generator powered
- Radio remote control
- Full set up in less than one day
- Telescoping tower

Full details can be found at our website or by calling our toll free number. Dealer inquires welcome

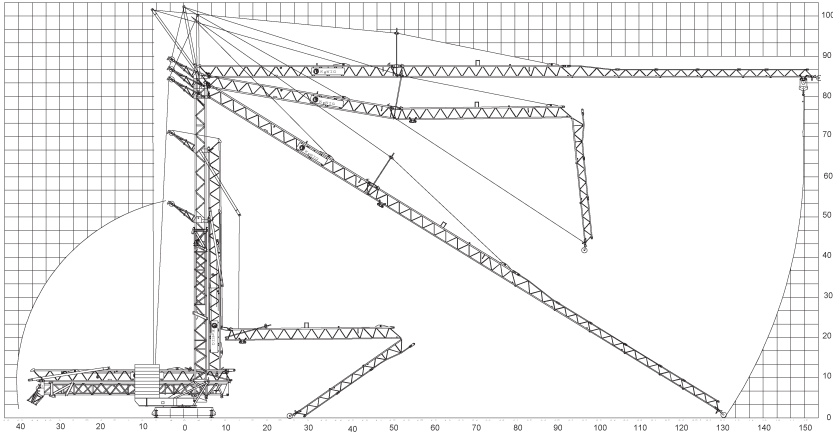
Koenig Cranes North America

2190 A-Carpenter Street
P.O. Box 2304, Abbotsford
BC Canada V2T 4X2

Tel 604-852-2192
Fax 604-852-4421
Email info@koenigcranes.com

K72 Technical Data

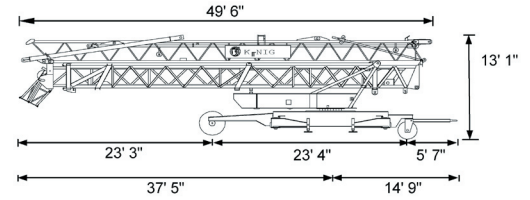
Erection



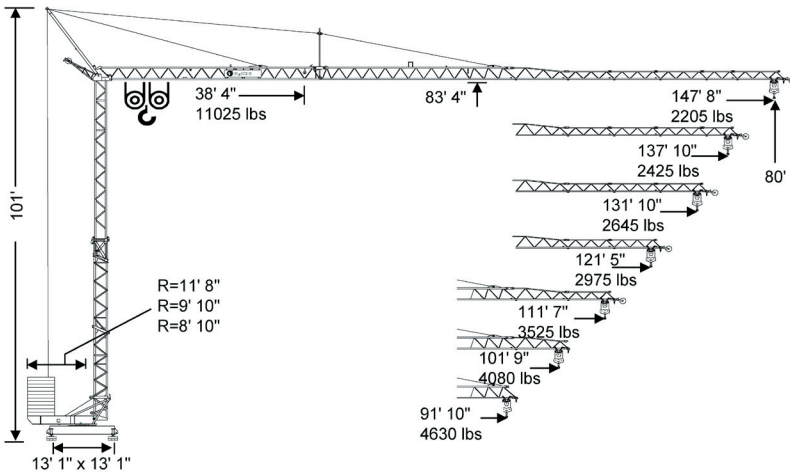
Weight

Dead weight approx.	19.2 T	Transport weight approx.	20.8 T
Counterweight	R = 11' 8" 30.8 T R = 9' 10" 35.5 T R = 8' 10" 39.4 T		

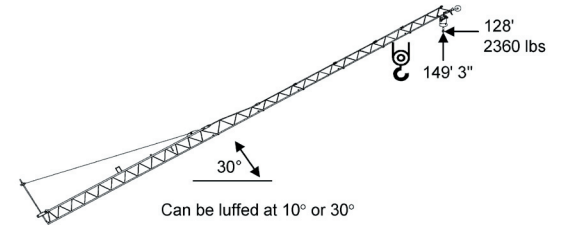
Transportation by Road



Rigging



Luffing



Reactions

	In service	Out of service
Reactions	31.4 T	26.1 T

Radius and Capacity

Radius	max capacity		ft x lbs													
	ft	0°	T	ft	59	66	72	79	85	91	101	111	121	131	138	148
148		2.75	70.5	5512	5512	5370	4861	4436	4076	3627	3263	2961	2705	2557	2360	
30°		Radius (ft)		51	57	62	69	74	80	89	97	105	113	120	128	
30°		Hook Height (ft)		105	108	112	115	118	121	126	131	136	141	144	149	
10°		Radius (ft)		57	64	71	77	84	90	100	110	120	128	135	144	
10°		Hook Height (ft)		87	89	90	92	94	95	97	98	100	102	103		

Radius	max capacity		ft x lbs													
	ft	0°	T	ft	43	52	62	72	82	92	102	112	121	131	138	148
148		2.75	69.0	5512	5512	5512	5282	4550	3988	3538	3175	2873	2617	2469	2270	
		5.5	38.6	9764	7608	6204	5216	4484	3922	3472	3108	2806	2551	2403	2205	
138		2.75	69.4	5512	5512	5512	5329	4592	4023	3571	3203	2899	2641	2490		
		5.5	38.9	9846	7672	6257	5262	4526	3957	3505	3137	2833	2575	2425		
131		2.75	70.9	5512	5512	5512	5463	4707	4125	3664	3287	2974	2712			
		5.5	39.6	10086	7862	6413	5397	4641	4059	3598	3221	2908	2645			
121		2.75	72.2	5512	5512	5512	5512	4810	4215	3743	3360	3042				
		5.5	40.3	10298	8029	6552	5514	4744	4149	3677	3294	2975				
111		2.75	76.3	5512	5512	5512	5512	5132	4502	4001	3593					
		5.5	42.5	10968	8558	6989	5884	5066	4436	3935	3525					
101		2.75	78.6	5512	5512	5512	5512	5313	4663	4145						
		5.5	43.7	11023	8851	7231	6091	5247	4597	4080						
91		2.75	79.1	5512	5512	5512	5512	5351	4695							
		5.5	43.9	11023	8915	7282	6135	5284	4630							

All specifications subject to change

Speeds

	Step	ft/min.	lbs	kW
	1	20 - 10	5512 - 11023	3.5
	2	78 - 39	5512 - 11023	9
	3	157 - 78	2975 - 5952	11
	1	65		1.1
	2	131		1.5
	0-0.75	U/min. sl./min. tr./min.		3.0

	Cross section of cable up to 5x10"	Operation voltage 400 V	Frequency 60Hz	Power requirement 13.2 kVA (14.7 kW)
--	------------------------------------	-------------------------	----------------	--------------------------------------