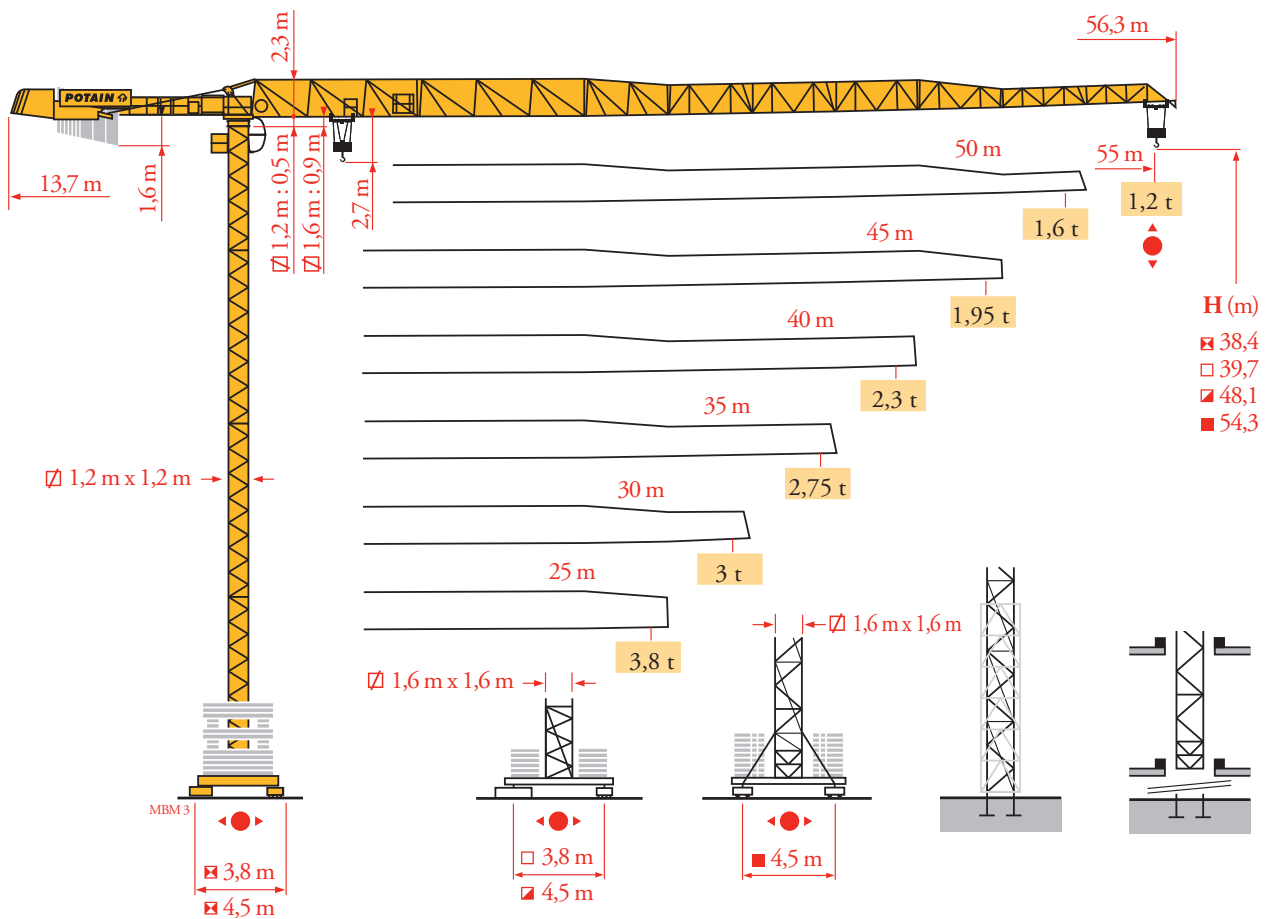
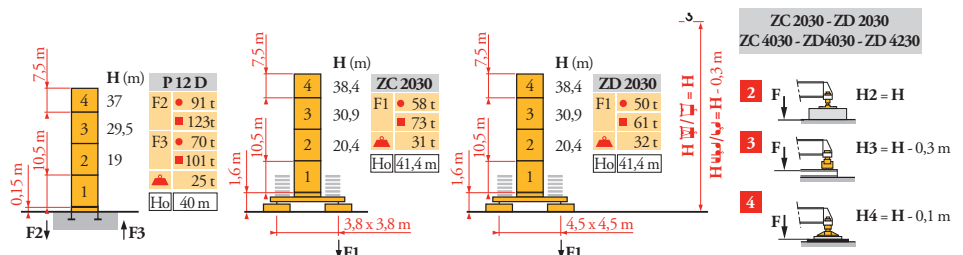


Potain MDT 98

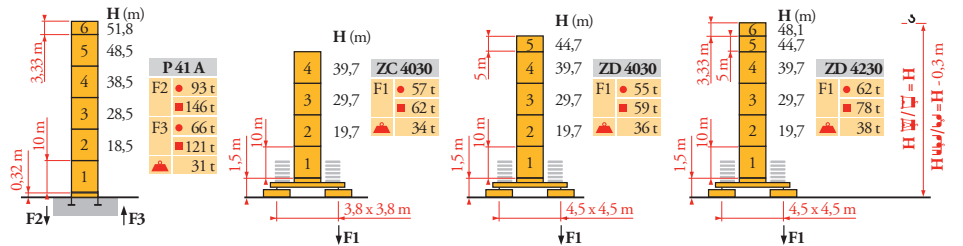


Mat / Réactions City 1,2 m
 Maste / Eckdrücke
 Masts / Reactions
 Mástil / Reacciones
 Torre / Reazioni
 Tramo / Reaçções
 Композиции башни / Реакции

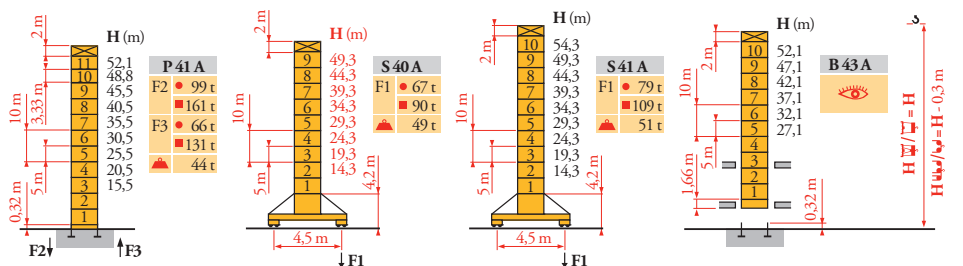
MBM 3



City 1,6 m

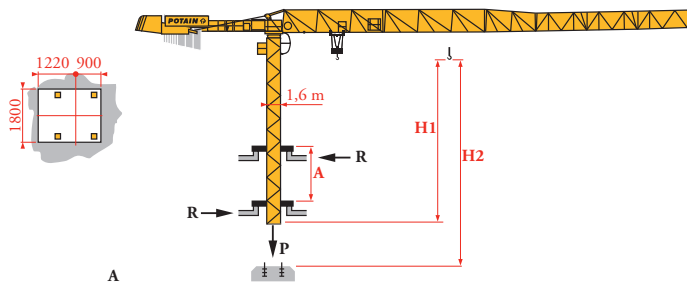


Télescopable 1,6 m
 Teleskopierbar 1,6 m
 Telescopico 1,6 m
 Telescopico 1,6 m
 Telescopagem 1,6 m
 Телескопируемый башня 1,6 м х 1,6 м

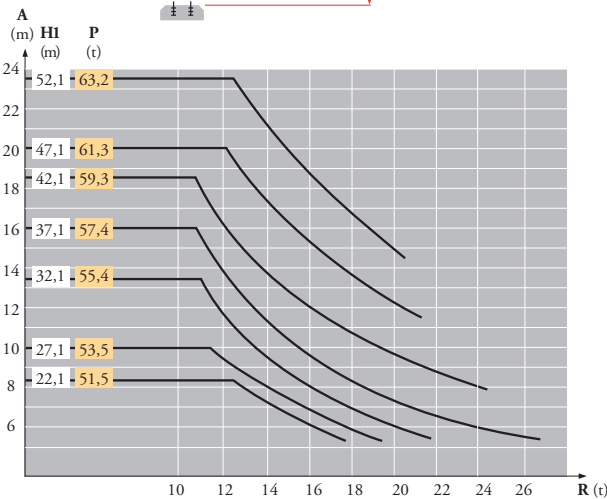


Télescopage sur dalles
 Kletterkrane im Gebäude
 Climbing crane
 Telescopagem gruas trepadoras
 Gru in cavedio
 Telescopagem sobre lages
 Кран, ползущий внутри здания

MBM 3



B 43 A



FR

- Réactions en service
- Réactions hors service

DE

- Reaktionskräfte in Betrieb
- Reaktionskräfte außer Betrieb

EN

- Reactions in service
- Reactions out of service

ES

- Reacciones en servicio
- Reacciones fuera de servicio

IT

- Reazioni in servizio
- Reazioni fuori servizio

PT

- Reações em serviço
- Reações fora de serviço

RU

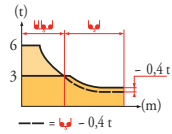
- Реакции при работе
- Реакции в покое
- ▲ Вес без груза, балласта (или транспортных осей), с максимальной длиной стрелы и максимальной высотой
- Высота без кабины

Courbes de charges
Lastkurven
Load diagrams
Curvas de cargas
Curve di carico
Curva de cargas
Диаграммы
грузоподъемностей

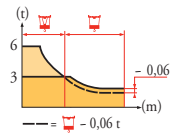
MBM 3



| | | | | | | | | | | | | | | | | | | | |
|------|-------|------|------|-----|-----|-------|-------|------|------|--------|------|------|-------|------|--------|------|-------|-----|-------|
| 55 m | 3,1 ▶ | 14,1 | 15 | 17 | 20 | 22 | 24,5 | 27 | 30 | 32 | 35 | 37 | 40 | 42 | 45 | 47 | 50 | 52 | 55 m |
| ▲▲▲▲ | | 6 | 5,6 | 4,8 | 3,9 | 3,5 | 3 | 3 | 2,65 | 2,45 | 2,2 | 2,05 | 1,85 | 1,75 | 1,6 | 1,5 | 1,35 | 1,3 | 1,2 t |
| 50 m | 3,1 ▶ | | 15,8 | 17 | 20 | 22 | 25 | 27,4 | 30,2 | 32 | 35 | 37 | 40 | 42 | 45 | 47 | 50 m | | |
| ▲▲▲▲ | | | 6 | 5,5 | 4,5 | 4 | 3,4 | 3 | 3 | 2,8 | 2,5 | 2,35 | 2,15 | 2 | 1,85 | 1,75 | 1,6 t | | |
| 45 m | 3,1 ▶ | | 16,5 | 17 | 20 | 22 | 25 | 27 | 28,7 | 31,7 | 35 | 37 | 40 | 42 | 45 m | | | | |
| ▲▲▲▲ | | | 6 | 5,8 | 4,8 | 4,2 | 3,6 | 3,3 | 3 | 3 | 2,65 | 2,5 | 2,25 | 2,15 | 1,95 t | | | | |
| 40 m | 3,1 ▶ | | 16,7 | 17 | 20 | 22 | 25 | 27 | 29,1 | 32,1 | 35 | 37 | 40 m | | | | | | |
| ▲▲▲▲ | | | 6 | 5,9 | 4,8 | 4,3 | 3,7 | 3,3 | 3 | 3 | 2,7 | 2,55 | 2,3 t | | | | | | |
| 35 m | 3,1 ▶ | | 17 | 20 | 22 | 25 | 27 | 29,5 | 32,5 | 35 m | | | | | | | | | |
| ▲▲▲▲ | | | 6 | 4,9 | 4,4 | 3,7 | 3,4 | 3 | 3 | 2,75 t | | | | | | | | | |
| 30 m | 3,1 ▶ | | 17,2 | 20 | 22 | 25 | 27 | 30 m | | | | | | | | | | | |
| ▲▲▲▲ | | | 6 | 5 | 4,5 | 3,8 | 3,4 t | | | | | | | | | | | | |
| 25 m | 3,1 ▶ | | 17,2 | 20 | 22 | 25 m | | | | | | | | | | | | | |
| ▲▲▲▲ | | | 6 | 5 | 4,5 | 3,8 t | | | | | | | | | | | | | |



| | | | | | | | | | | | | | | | | | | | |
|------|-------|------|------|-----|-----|------|------|-------|------|-------|------|------|--------|------|------|-------|-----|------|--------|
| 55 m | 3,1 ▶ | 14,3 | 17 | 20 | 22 | 25,3 | 25,7 | 27 | 30 | 32 | 35 | 37 | 40 | 42 | 45 | 47 | 50 | 52 | 55 m |
| ▲▲▲▲ | | 6 | 4,9 | 4 | 3,6 | 3 | 3 | 2,8 | 2,45 | 2,25 | 2 | 1,9 | 1,7 | 1,55 | 1,45 | 1,35 | 1,2 | 1,15 | 1,05 t |
| 50 m | 3,1 ▶ | | 16 | 17 | 20 | 22 | 25 | 27 | 28,4 | 28,9 | 30 | 32 | 35 | 37 | 40 | 42 | 45 | 47 | 50 m |
| ▲▲▲▲ | | | 6 | 5,6 | 4,6 | 4,1 | 3,5 | 3,2 | 3 | 3 | 2,85 | 2,65 | 2,35 | 2,2 | 2 | 1,85 | 1,7 | 1,6 | 1,45 t |
| 45 m | 3,1 ▶ | | 16,8 | 17 | 20 | 22 | 25 | 27 | 29,8 | 30,3 | 32 | 35 | 37 | 40 | 42 | 45 m | | | |
| ▲▲▲▲ | | | 6 | 5,9 | 4,9 | 4,4 | 3,7 | 3,4 | 3 | 3 | 2,8 | 2,5 | 2,35 | 2,1 | 2 | 1,8 t | | | |
| 40 m | 3,1 ▶ | | 17 | 20 | 22 | 25 | 27 | 30,3 | 30,8 | 32 | 35 | 37 | 40 m | | | | | | |
| ▲▲▲▲ | | | 6 | 5 | 4,4 | 3,8 | 3,5 | 3 | 3 | 2,85 | 2,55 | 2,4 | 2,15 t | | | | | | |
| 35 m | 3,1 ▶ | | 17,3 | 20 | 22 | 25 | 27 | 30,7 | 31,2 | 35 m | | | | | | | | | |
| ▲▲▲▲ | | | 6 | 5 | 4,5 | 3,9 | 3,5 | 3 | 3 | 2,6 t | | | | | | | | | |
| 30 m | 3,1 ▶ | | 17,7 | 20 | 22 | 25 | 27 | 30 m | | | | | | | | | | | |
| ▲▲▲▲ | | | 6 | 5,2 | 4,7 | 4 | 3,6 | 3,2 t | | | | | | | | | | | |
| 25 m | 3,1 ▶ | | 17,7 | 20 | 22 | 25 m | | | | | | | | | | | | | |
| ▲▲▲▲ | | | 6 | 5,2 | 4,7 | 4 t | | | | | | | | | | | | | |



Lest de contre-flèche
Gegenauslegerballast
Counter-jib ballast
Lastre de contra flecha
Contrappeso
Lastros da contra lança
Балласт на консоли


MBM 3

| | | |
|------|--------|---------------------|
| | | 1 100 kg - 3 600 kg |
| ▲▲▲▲ | | ▲ (kg) |
| 55 m | 13,7 m | 17 400 |
| 50 m | 13,7 m | 16 300 |
| 45 m | 13,7 m | 15 200 |
| 40 m | 13,7 m | 14 100 |
| 35 m | 13,7 m | 13 000 |
| 30 m | 13,7 m | 11 900 |
| 25 m | 13,7 m | 10 800 |

Lest de base
Grundballast
Base ballast
Lastre de base
Zavorra di base
Lastros da base
Базовый балласт






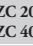

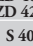





MBM 4

| | | | | | | | | | | | | |
|-------|---------|---|-------|------|------|------|------|------|------|------|------|------|
| 1,2 m | ZC 2030 | ● | H (m) | 38,4 | 30,9 | 20,4 | | | | | | |
| | | | ▲ (t) | 75 | 50 | 50 | | | | | | |
| 1,2 m | ZD 2030 | ● | H (m) | 38,4 | 30,9 | 20,4 | | | | | | |
| | | | ▲ (t) | 60 | 35 | 35 | | | | | | |
| 1,6 m | ZC 4030 | ● | H (m) | 39,7 | 29,7 | 19,7 | 9,7 | | | | | |
| | | | ▲ (t) | 70 | 65 | 60 | 55 | | | | | |
| 1,6 m | ZD 4030 | ● | H (m) | 44,7 | 39,7 | 34,7 | 29,7 | 24,7 | 19,7 | 14,7 | 9,7 | |
| | | | ▲ (t) | 70 | 70 | 60 | 60 | 45 | 45 | 45 | 45 | |
| 1,6 m | ZD 4230 | ● | H (m) | 48,1 | 44,7 | 39,7 | 34,7 | 29,7 | 24,7 | 19,7 | 14,7 | 9,7 |
| | | | ▲ (t) | 80 | 70 | 60 | 45 | 45 | 45 | 45 | 45 | 45 |
| 1,6 m | S 40 A | ● | H (m) | 49,3 | 44,3 | 39,3 | 34,3 | 29,3 | 24,3 | 19,3 | 14,3 | |
| | | | ▲ (t) | 84 | 60 | 42 | 42 | 42 | 42 | 36 | 36 | |
| 1,6 m | S 41 A | ● | H (m) | 54,3 | 49,3 | 44,3 | 39,3 | 34,3 | 29,3 | 24,3 | 19,3 | 14,3 |
| | | | ▲ (t) | 114 | 84 | 60 | 42 | 42 | 42 | 42 | 36 | 36 |

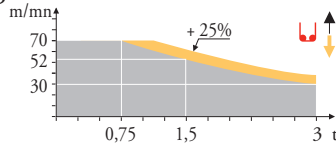
| | | | | | | |
|--|-------------------------------|---------------------------|-------------------------------|------------------------------|------------------------------|------------------------------------|
| FR | DE | EN | ES | IT | PT | RU |
| A Distance entre cadres | Abstand zwischen den Rahmen | Distance between collars | Distancia entra marcos | Distanza fra i telai | Distância entre quadros | Расстояние между рамками крепления |
| H1 Hauteur grue | Kranhöhe | Crane height | Altura grúa | Altezza gru | Altura da grua | Высота крана |
| P Poids de la grue (en service) | Krangewicht (in Betrieb) | Crane weight (in service) | Peso de la grúa (en servicio) | Peso della gru (in servizio) | Peso da grua (em serviço) | Вес крана (при работе) |
| R Réaction horizontale | Horizontalkräfte | Horizontal reaction | Reaccion horizontal | Reazione orizzontale | Reacção horizontal | Горизонтальные реакции |
|  Voir télescopage sur dalls | Siehe Kletterkrane im Gebäude | See climbing crane | Veja grua trepadora | Consultare gru in cavedio | Ver telescopagem sobre lages | См. кран, ползущий внутри здания |

Mécanismes
Antriebe
Mechanisms
Mecanismos
Meccanismi
Mecanismos
Механизмы

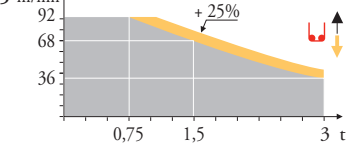
MBM 4

| | | U | | | | | | | UU | | | | | ch - PS hp | kW |  | |
|---|---|--|-----------------|-----|------|-----|------|----|---|-----|-----|----|-----|---------------|---------|---|-------|
|  | 25 LVF 15 Optima | m/min | 3,2 | 8,6 | 30 | 40 | 52 | 70 | 1,6 | 4,3 | 15 | 20 | 26 | 35 | 25 | 18 | 260 m |
| | t | 3 | 3 | 3 | 2,25 | 1,5 | 0,75 | 6 | 6 | 6 | 4,5 | 3 | 1,5 | | | | |
|  | 33 LVF 15 Optima | m/min | 3 | 12 | 36 | 48 | 68 | 92 | 1,5 | 6 | 18 | 24 | 34 | 46 | 30 | 22 | 260 m |
| | t | 3 | 3 | 3 | 2,25 | 1,5 | 0,75 | 6 | 6 | 6 | 4,5 | 3 | 1,5 | | | | |
|  | 7 DVF 4 | m/min | 0 → 79 | | | | | | | | | | | 6,5 | 4,8 | | |
|  | RVF 152 Optima + | tr/min U/min rpm | 0 → 0,8 | | | | | | | | | | | 2 x 5,5 | 2 x 4 | | |
|  | ZC 2030 ZC 4030 | RT 224 | m/min 25 | | | | | | | | | | | 2 x 4 | 2 x 2,9 | | |
|  | ZD 2030 ZD 4030 ZD 4230 | RT 324 | m/min 12,5 - 25 | | | | | | | | | | | 2 x 7 | 2 x 5,2 | | |
|  | S 40 A  | RT 324 R ≥ 10 m | m/min 12,5 - 25 | | | | | | | | | | | 2 x 7 | 2 x 5,2 | | |
|  | S 41 A  | RT 443 A1 2V R ≥ 10 m | m/min 15 - 30 | | | | | | | | | | | 4 x 5 | 4 x 3,7 | | |
| | |  IEC 60204-32 | | | | | | |  kVA | | | | | | | | |
| | | 400 V(+10% -10%) 50 Hz / 480 V(+ 6% -10%) 60 Hz | | | | | | | 25 LVF : 40 kVA 33 LVF : 50 kVA | | | | | | | | |

25 LVF 15
Optima



33 LVF 15
Optima



FR
 Levage
 Distribution
 Orientation
 Translation

DE
Heben
Katzfahren
Schwenken
Kranfahren

EN
Hoisting
Trolleying
Slewing
Travelling

ES
Elevación
Distribución
Orientación
Traslación

IT
Sollevamento
Distribuzione
Rotazione
Traslazione

PT
Elevação
Distribuição
Rotação
Translação

RU
Подъем
Перемещение каретки
Поворот
Перемещение крана



Document commercial non contractuel. Pour toute information technique se référer à la notice correspondante.

Unverbindliches Vertriebsdokument. Für technische Informationen, siehe die entsprechenden Anweisungen.

This commercial document is not legally binding. For any technical information, please refer to the corresponding instructions.

Documento commercial no contractual. Para cualquier información técnica, ver la noticia correspondiente.

Documento commerciale non vincolante. Per tutte le informazioni tecniche fare riferimento al catalogo istruzioni.

Documento comercial não contractual. Para qualquer informação técnica complementar consultar as respectivas instruções.

Этот коммерческий документ не является юридически обязательным. Для получения технической информации, см. соответствующие инструкции.



Manitowoc - Americas - World Headquarters
2400 S. 44th Street • Manitowoc • WI 54220 USA
Tel: +1 920 684 4410 • Fax: +1 920 652 9778

Manitowoc - Europe, Middle East & Africa
Ecully, France
18, rue de Charbonnières B.P. 173 • 69132 ECULLY Cedex • FRANCE
Tel: +33 (0)4 72 18 20 20 • Fax: +33 (0)4 72 18 20 00

Manitowoc - Asia Pacific
16F Xu Hui Yuan Building,
1089 Zhongshan No.2 Road (S) • Shanghai 200030 China
Tel: +86 21 6457 0066 • Fax: +86 21 6457 4955