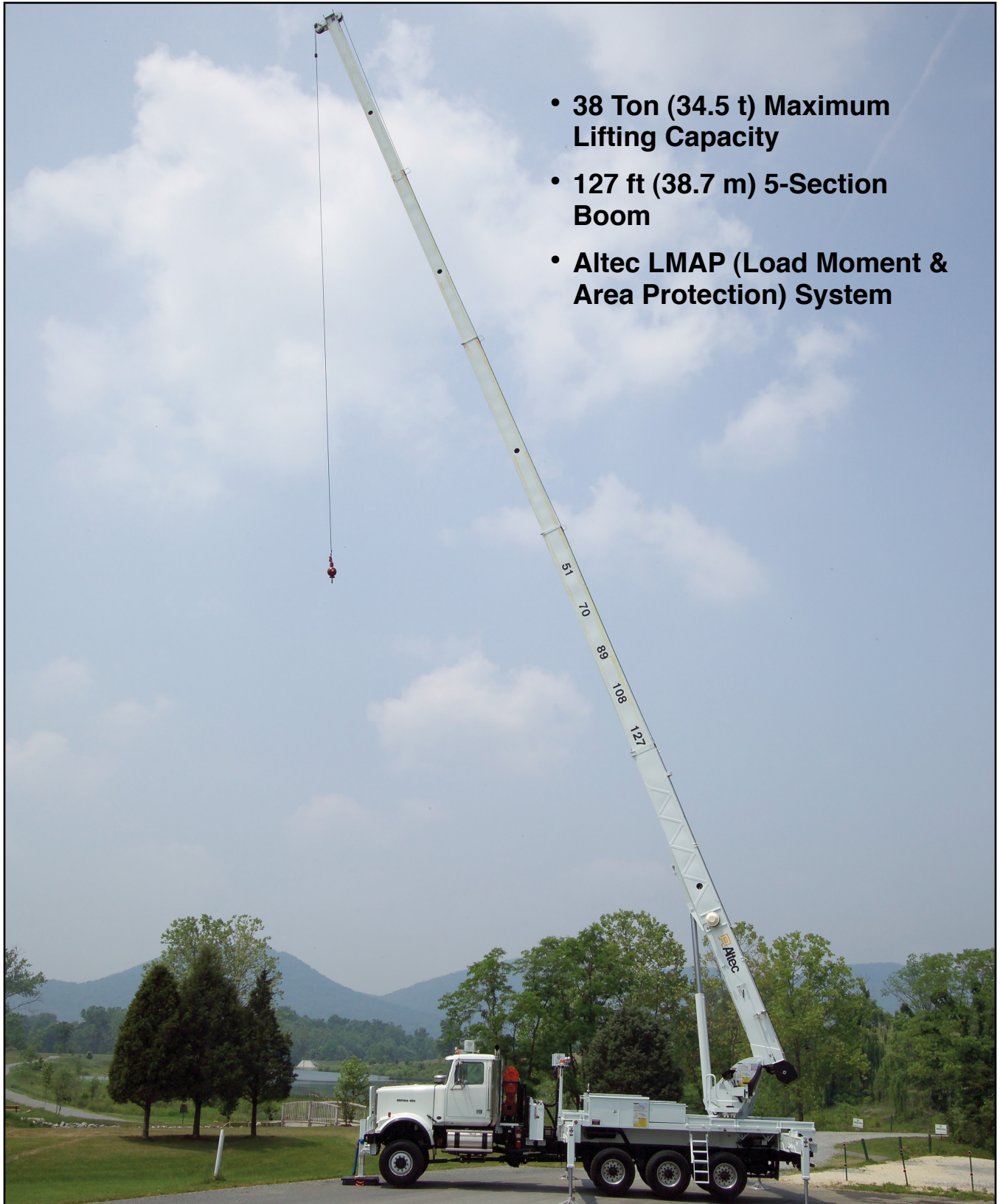




# Altec AC38-127S-HL Hydraulic Telescopic Crane



- **38 Ton (34.5 t) Maximum Lifting Capacity**
- **127 ft (38.7 m) 5-Section Boom**
- **Altec LMAP (Load Moment & Area Protection) System**



*Altec LMAP System*

## RECOMMENDED FEATURES

- Wheel Chocks
- Fall Protection System (with Platform)
- Radio Remote Control (with Platform)

## OPTIONS

- 1-Piece 31 ft (9.4 m) Jib
- 2-Man Steel Platform
- Climate-Controlled Enclosed Cab
- Load Blocks for Multiple Parts of Line
- Hydraulic Tool Circuit at Tail Shelf
- Pintle Hitch
- Hot Shift Power Take-Off
- Utility Tool Boxes
- Rotation Resistant Wire Rope

## STANDARD SAFETY FEATURES

- Altec LMAP (Load Moment & Area Protection) System
  - Rated Capacity Limitor
  - Displays Boom Length, Angle, Load on Hook, Percent of Rated Capacity
  - Electronic Working Area Definition
  - Operator Audible Alarm Set-Points for Boom Angle, Length and Rotational Position
- Outrigger Boom Interlock System
- Outrigger Motion Alarm
- Back-Up Alarm
- Emergency Stop at Operator Controls
- Drum Rotation Indicator
- Anti-Two Block Device
- Front Bumper Outrigger
- Altec Opti-View® Control System

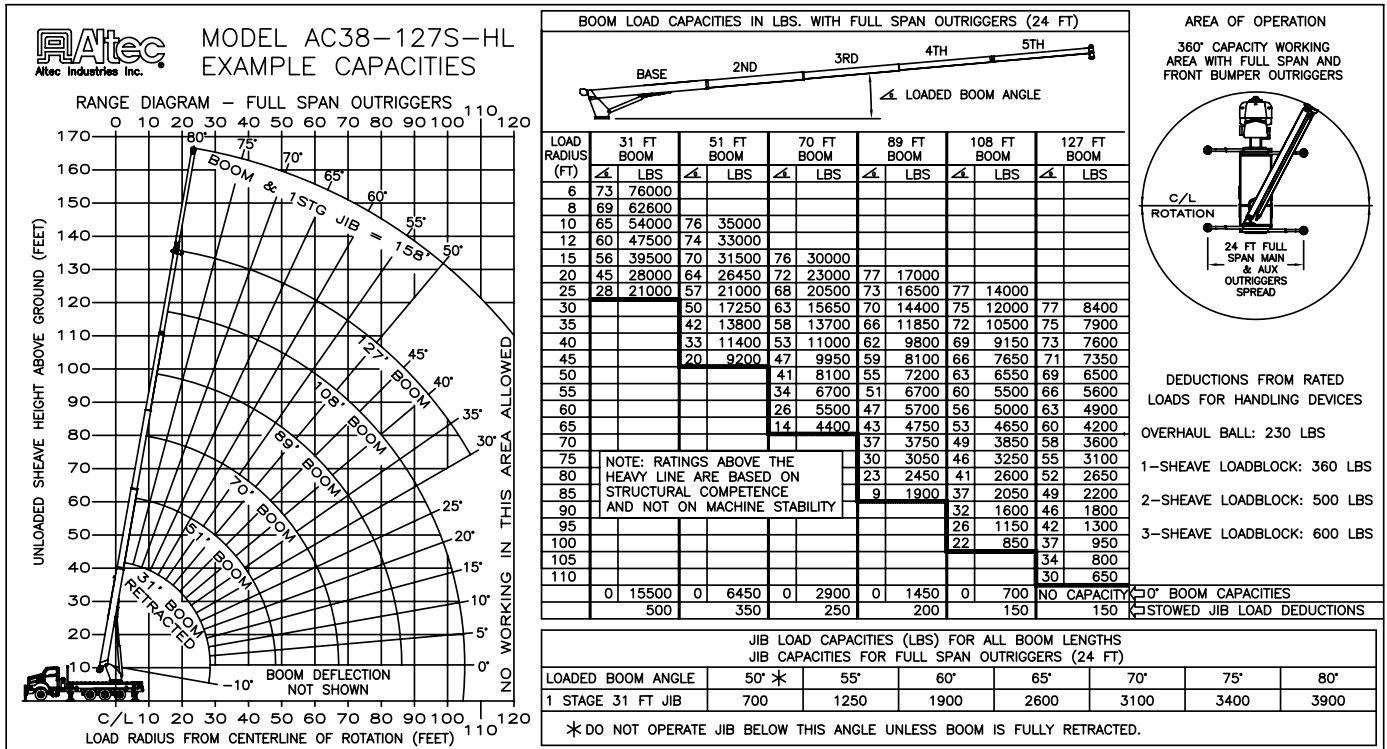
## CRANE SPECIFICATIONS

- 76,000 lb (34,475 kg) Maximum Lifting Capacity
- 127 ft (38.7 m) 5-Section Non-Insulated Boom
- 137 ft (41.8 m) Maximum Sheave Height
- Stowed Travel Height of 12.9 ft (3.9 m)
- Vehicle Travel Length of 38 ft (11.6 m)
- Sequential Out-and-Down Outriggers
  - Full Span 24 ft (7.3 m)
  - Mid Span 15.75 ft (4.8 m)
- Hydraulic Pilot-Operated Control System
- Continuous Rotation
- Hydraulic Oil Cooling System
- Life Cycle Tested for Reliability

## CHASSIS REQUIREMENTS

	Rear Tri-Drive	
Gross Vehicle Weight Rating	70,000 lb	(31,7507 kg)
Front Axle Weight Rating	20,000 lb	(9070 kg)
Rear Axle Combination Rating	54,000 lb	(24,494 kg)
Cab-to-Axle	160 in	(4064 mm)
Wheel Base	251 in	(6375 mm)

# Altec AC38-127S-HL Capacities



<p>OPERATOR AIDS MUST BE IN GOOD OPERATING CONDITION BEFORE OPERATING CRANE. REFER TO OWNERS MANUAL.</p> <p>KEEP AT LEAST 3 WRAPS OF LOADLINE ON DRUM AT ALL TIMES.</p> <p>USE ONLY 5/8" DIAMETER IWRC OR ROTATION RESISTANT WIRE ROPE WITH 45,400 LBS. MIN. BREAKING STRENGTH ON THIS MACHINE.</p>	1 PART LOAD LINE	2 PART LOAD LINE	3 PART LOAD LINE	4 PART LOAD LINE	5 PART LOAD LINE	6 PART LOAD LINE
	LOADS UP TO	LOADS UP TO	LOADS UP TO	LOADS UP TO	LOADS UP TO	LOADS UP TO
IWRC XXIP WIRE ROPE	12,971 LBS.	25,942 LBS.	38,913 LBS.	51,884 LBS.	64,855 LBS.	76,000 LBS.
ROTATION RESISTANT WIRE ROPE	9,080 LBS.	18,160 LBS.	27,240 LBS.	36,320 LBS.	45,400 LBS.	54,480 LBS.
MAXIMUM BOOM LENGTH AT MAXIMUM ELEVATION WITH RIGGING SHOWN TO REACH THE GROUND	127 FT BOOM	119 FT BOOM	87 FT BOOM	68 FT BOOM	55 FT BOOM	46 FT BOOM

WINCH		LIFTS AND SPEEDS					
5/8" DIAMETER IWRC XXIP CABLE SUPPLIED	STANDARD PLANETARY WINCH HIGH SPEED	6170 LBS. 298 FT/MIN	12,340 LBS. 149 FT/MIN	18,510 LBS. 99 FT/MIN	24,680 LBS. 74 FT/MIN	30,850 LBS. 59 FT/MIN	37,020 LBS. 49 FT/MIN
	STANDARD PLANETARY WINCH LOW SPEED	12340 LBS. 149 FT/MIN	24,680 LBS. 74 FT/MIN	37,020 LBS. 49 FT/MIN	49,360 LBS. 37 FT/MIN	61,700 LBS. 29 FT/MIN	74,040 LBS. 24 FT/MIN

ALL WINCH PULLS AND SPEEDS IN THIS CHART ARE SHOWN ON THE 3RD LAYER. WINCH LINE PULLS WOULD INCREASE ON THE FIRST AND SECOND LAYERS. WINCH LINE SPEED WOULD DECREASE ON THE FIRST AND SECOND LAYERS. WINCH LINE PULLS MAY BE LIMITED BY THE WINCH CAPACITY OF 10,439 LBS FULL DRUM OR ANSI CABLE SAFETY LIMITS SHOWN IN CHART FOR IWRC XXIP AND ROTATION RESISTANT WIRE ROPES.

**CAUTION:**

- Load ratings shown are maximum allowable loads with the crane mounted on an Altec-approved chassis.
- Loaded boom angles at specified boom lengths give only an approximation of the operating radius. The boom angle before loading should be greater to account for deflections. Do not exceed the operating radius for rated loads.
- When between listed boom lengths for radii, always use the smallest of values shown. Capacities for the 31 ft boom length must only be lifted with boom fully retracted.
- Load ratings are based on freely suspended loads with the crane properly set-up on outriggers, with the machine leveled and standing on firm uniform supporting surface.
- Actual working capacities depend on supporting surfaces, wind and other factors affecting stability such as hazardous surroundings, experience of personnel, and proper handling.
- Weights of load block, stowed jib, or other accessories must be deducted from the rated capacities shown.



**For Service: 1-877-GO-ALTEC**  
**For Sales: 1-540-992-5300**

Altec Cranes are supported by service centers and over 115 mobile service technicians positioned across North America, seven days a week, 24 hours a day.

**United States:**

Alabama Service Center  
 1730 Vanderbilt Road  
 Birmingham, AL 35234

Arizona Service Center  
 2420 South 16th Avenue  
 Phoenix, AZ 85007

California Service Center (Northern)  
 325 Industrial Way  
 Dixon, CA 95620

California Service Center (Southern)  
 2882 Pomona Boulevard  
 Pomona, CA 91766

Colorado Service Center  
 641 Telluride Street  
 Aurora, CO 80011

Florida Service Center  
 2570 Old Okeechobee Road  
 Palm Beach, FL 33409

Georgia Service Center  
 287 First Street  
 Forest Park, GA 30297

Indiana Service Center  
 5201 West 84th Street  
 Indianapolis, IN 46268

Kentucky Service Center  
 200 Altec Drive  
 Elizabethtown, KY 42701

Maryland Service Center  
 1434 Hughes Ford Road  
 Frederick, MD 21701

Massachusetts Service Center  
 28 Wales Street  
 Millbury, MA 01527

Missouri Service Center  
 2106 S. Riverside Road  
 St. Joseph, MO 64507

North Carolina Service Center  
 1550 Aerial Avenue  
 Creedmoor, NC 27522

Ohio Service Center  
 1236 Township Road 1175  
 Ashland, OH 44805

Oregon Service Center  
 13817 NE Sandy Boulevard  
 Portland, OR 97230

Pennsylvania Service Center  
 250 Laird Street  
 Plains, PA 18705

Texas Service Center  
 1001 Solon Road  
 Waxahachie, TX 75156

Virginia Service Center  
 325 South Center Drive  
 Daleville, VA 24083

**Canada:**

British Columbia Service Center  
 12352 84th Avenue  
 Surrey, BC V3W 0J5

Manitoba Service Center  
 57 Durand Road  
 Winnipeg, Manitoba R2J 3T1

Ontario Service Center  
 831 Nipissing Road  
 Milton, Ontario L9T 4Z4



*Vehicle Travel Height of 12.9 ft (3.9 m)*



*Optional 2-Man Platform*

Altec Industries, Inc.  
 325 South Center Drive  
 Daleville, VA 24083



Manufacturing and Service Facilities Located  
 Throughout the United States and Canada  
[www.altec.com](http://www.altec.com)