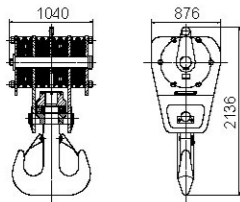




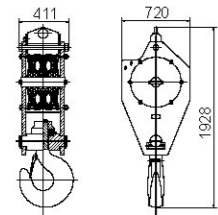
SCC1500C Hydraulic Crawler Crane



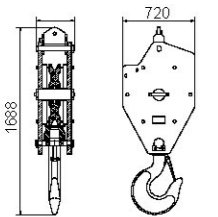
Transportation Dimension Of Main Parts



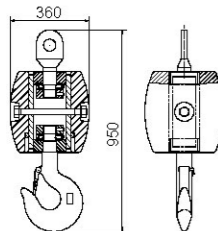
150t hook block	x1
Length	0.88m
Width	1.04m
Height	2.14m
Weight	2246 kg



50t hook block	x1
Length	0.72m
Width	0.41m
Height	1.93m
Weight	685 kg



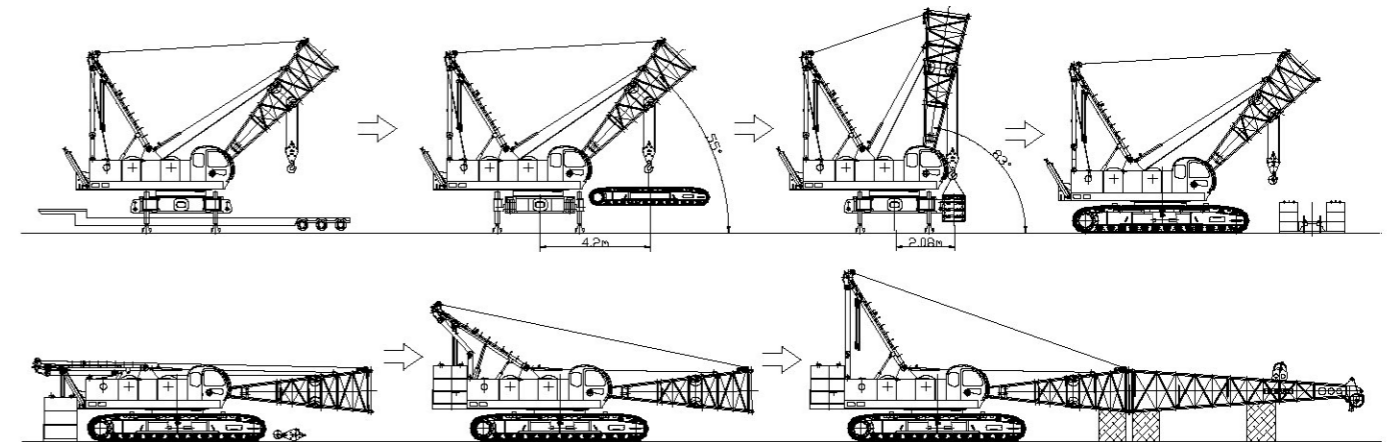
25t hook block	x1
Length	0.72m
Width	0.37m
Height	1.69m
Weight	463 kg



9t hook block	x1
Length	0.36m
Width	0.36m
Height	0.95m
Weight	246 kg

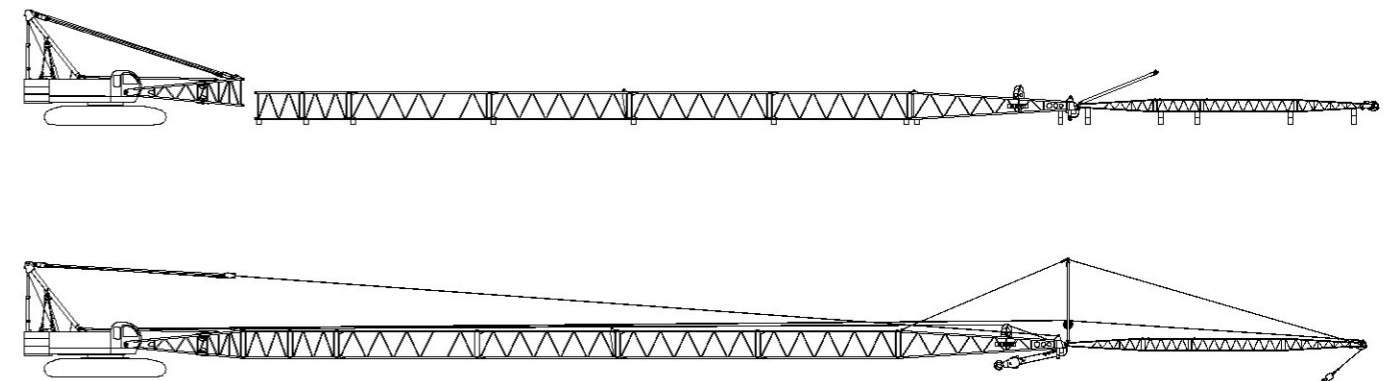
Self-assembly & Disassembly

This crane is equipped with the functions including the self-assembly and disassembly of the track traveling mechanism and the self-assembly and disassembly of the counterweight. In the course of assembly, the track traveling mechanism should be assembled firstly and then the counterweight. In the course of disassembly, the counterweight should be disassembled firstly and then the track traveling mechanism. See the figure below for detailed operation procedures.



Schematic Diagram of Self-assembly (Perform Reverse Procedure for Disassembly)

Installation of Fixed Jib



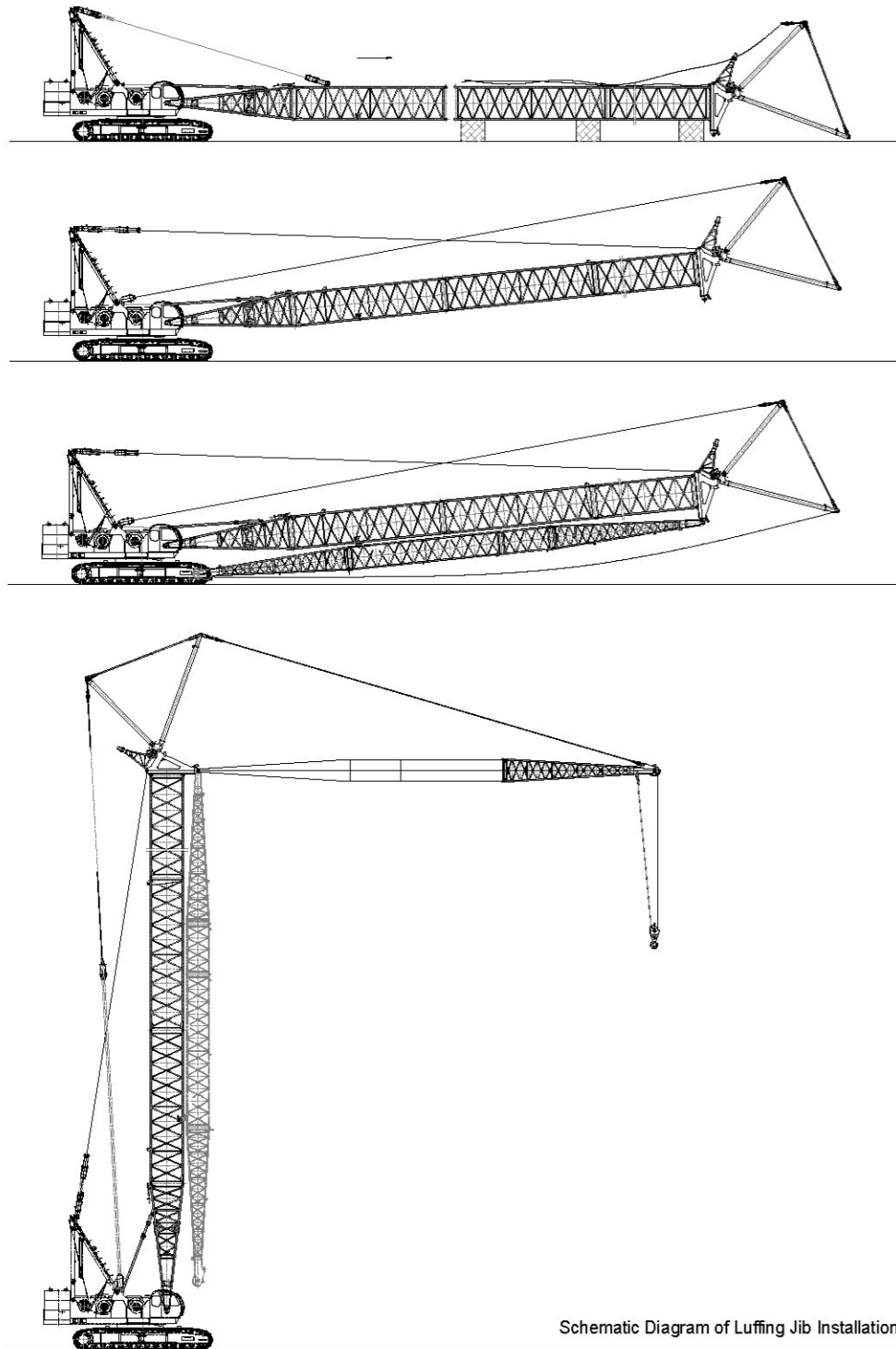
Schematic Diagram of Fixed Jib Installation



SCC1500C Hydraulic Crawler Crane



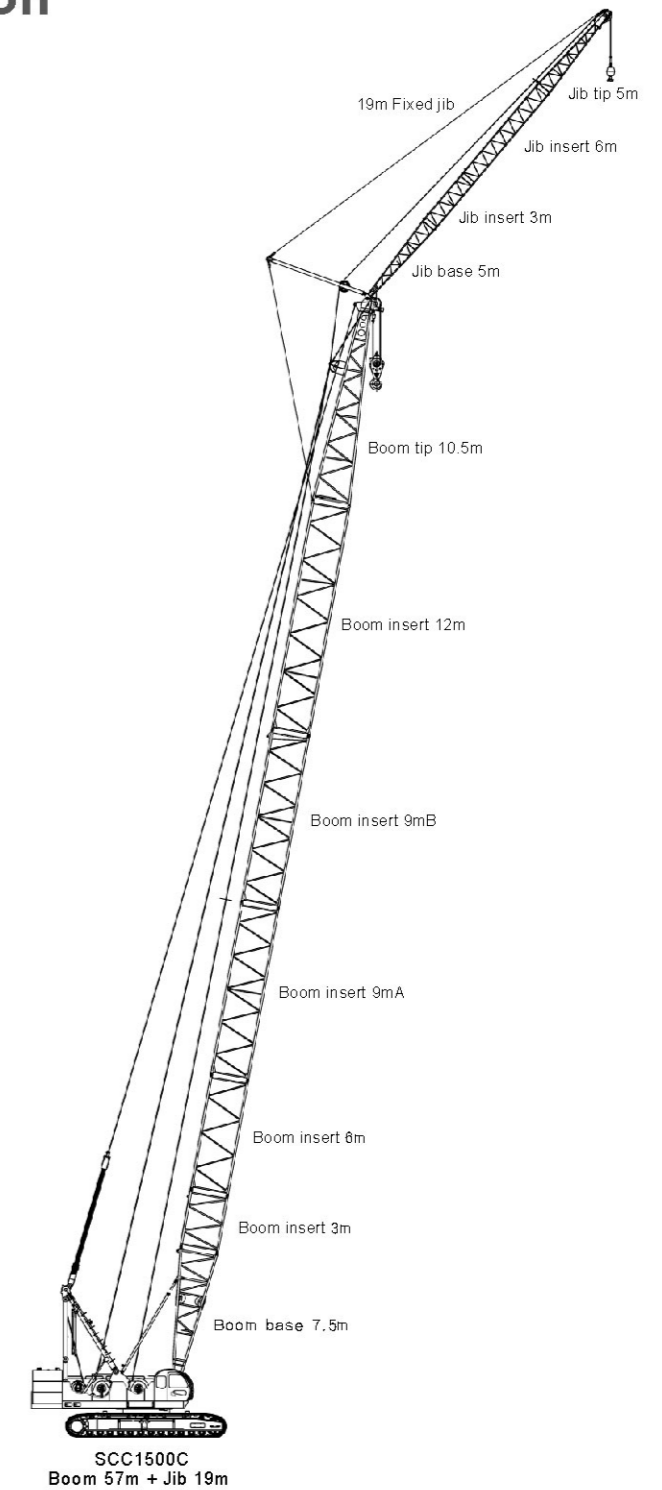
Installation of Luffing Jib (with tower attachment)



Schematic Diagram of Luffing Jib Installation

Main Boom Combination

Boom length (m)	Main Boom Insert				
	3m	6m	9mA	9mB	12m
18	-	-	-	-	-
21	1	-	-	-	-
24	-	1	-	-	-
27	1	1	-	-	-
30	1	-	1	-	-
33	-	2	-	-	-
36	1	1	1	-	-
39	1	1	-	-	1
42	1	-	1	1	-
45	-	1	1	1	-
48	1	1	1	-	1
51	1	1	-	-	2
54	1	-	1	1	1
57	-	2	1	-	1
60	1	1	-	-	2
63	1	-	1	1	2
66	1	2	1	-	2
69	1	1	1	1	2
75	1	2	1	1	2
81	1	3	1	1	2



SCC1500C
Boom 57m + Jib 19m



SCC1500C Hydraulic Crawler Crane



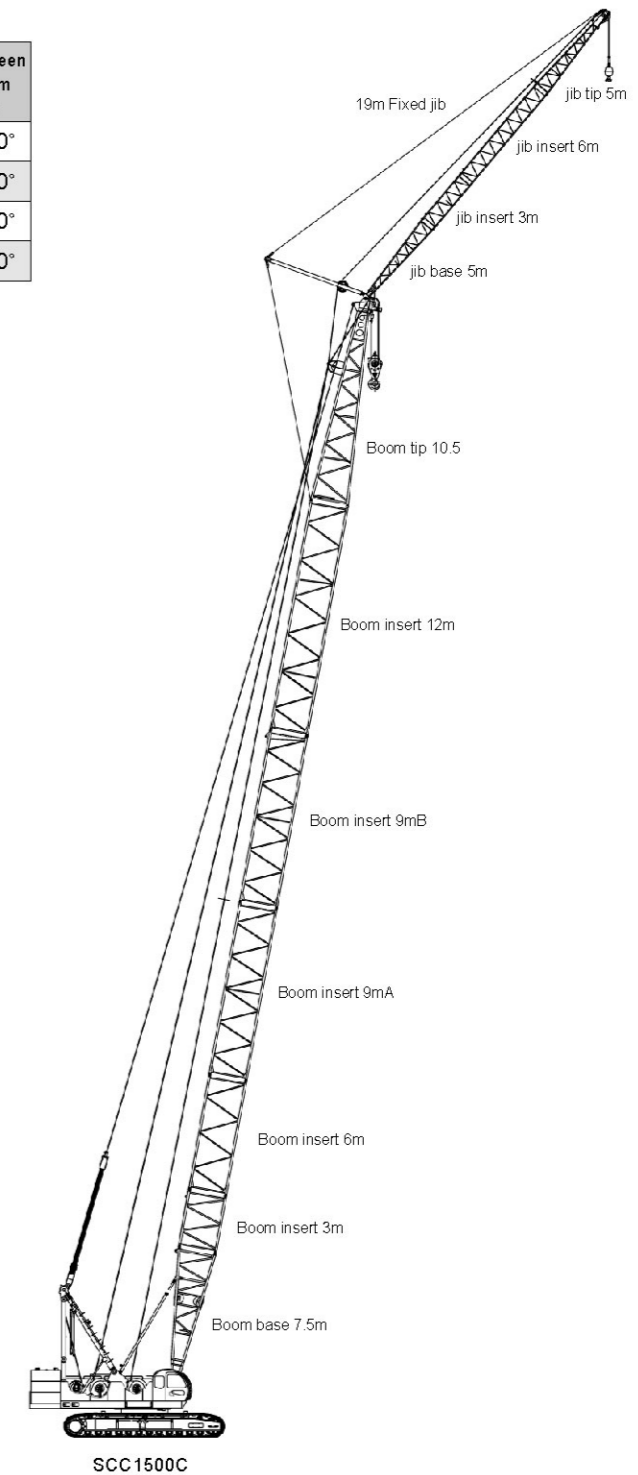
Main Boom Load Chart

Operating Range (m)	Main Boom Length (m)																				
	18	21	24	27	30	33	36	39	42	45	48	51	54	57	60	63	66	69	75	81	
5	155.0	5.4mx 135.3t																			
6	137.0	129.8	5.9mx 120.3t	6.4mx 106.1t																	
7	118.5	118.2	107.8	101.8	6.9mx 95.7t	7.5mx 85.8t															
8	98.9	98.8	98.7	98.5	90.1	83.9	77.9	8.5mx 70.8t													
9	82.5	82.2	82.1	82.0	81.9	81.7	74.7	68.7	9.5mx 64.5t	9.6mx 58.7t											
10	70.6	70.5	70.2	70.1	70.0	69.9	69.7	64.8	62.2	57.9	10.1mx 54.0t	10.6mx 49.3t	11.1mx 45.5t	11.7mx 41.8t							
12	54.6	54.4	54.2	54.1	54.0	53.9	53.7	53.6	53.4	53.2	50.9	47.2	44.2	41.4	12.5mx 39.2t	13.0mx 35.0t	13.5mx 31.5t				
14	44.3	44.2	44.0	43.8	43.7	43.6	43.4	43.2	42.9	42.9	42.8	42.7	42.5	38.7	36.7	33.6	30.9	28.3	15.0mx 22.7t		
16	37.3	37.0	36.8	36.5	36.3	36.2	36.1	36.0	35.8	35.7	35.6	35.5	35.3	35.2	33.3	30.8	28.6	26.5	22.1	20.6	
18		31.7	31.5	31.3	31.1	31.0	30.9	30.7	30.5	30.3	30.2	30.1	30.0	29.8	30.3	28.0	26.4	24.6	21.1	19.7	
20		19.7mx 26.2t	27.5	27.3	27.1	26.9	26.8	26.7	26.4	26.4	26.3	26.1	25.9	25.7	26.1	26.0	24.0	22.7	20.1	18.7	
22			24.4	24.2	23.8	23.7	23.6	23.4	23.2	23.1	23.0	22.9	22.7	22.5	22.9	22.7	22.6	20.8	19.0	17.7	
24			22.3mx 23.8t	21.6	21.3	21.1	21.0	20.8	20.6	20.5	20.4	20.3	20.1	19.8	20.3	20.1	19.8	19.8	17.9	16.7	
26				24.9mx 20.6t	19.2	19.0	18.9	18.7	18.5	18.4	18.3	18.1	18.0	17.7	18.1	17.9	17.6	17.6	17.2	15.7	
28					27.5mx 17.9t	17.2	17.1	16.9	16.7	16.6	16.4	16.3	16.1	16.0	16.2	16.0	15.8	15.8	15.3	15.2	
30						15.8	15.6	15.3	15.1	15.0	14.9	14.7	14.6	14.4	14.6	14.4	14.2	14.2	13.8	13.5	
32							30.1mx 15.6t	14.3	14.1	13.9	13.7	13.5	13.4	13.2	13.0	13.2	13.0	12.8	12.8	12.4	12.2
34								32.7mx 13.9t	12.9	12.7	12.6	12.4	12.3	12.1	11.9	12.0	11.9	11.7	11.7	11.1	11.0
36									35.3mx 12.3t	11.7	11.6	11.4	11.2	11.0	10.8	11.0	10.8	10.6	10.6	10.1	10.0
38										37.9mx 10.9t	10.7	10.5	10.4	10.2	10.0	10.1	9.9	9.7	9.7	9.1	8.9
40											9.9	9.8	9.6	9.3	9.1	9.2	9.1	8.8	8.8	8.2	8.0
42											40.5mx 9.8t	9.0	8.9	8.6	8.5	8.5	8.3	8.1	8.0	7.5	7.1
44												43.1mx 8.7t	8.3	8.0	7.9	7.8	7.6	7.4	7.2	6.6	6.4
46													45.7mx 7.8t	7.5	7.1	7.1	6.9	6.6	6.5	6.0	5.7
48														6.8	6.6	6.5	6.3	6.1	6.0	5.4	5.0
50														48.3mx 6.7t	6.1	6.0	5.8	5.5	5.4	4.8	4.5
52															50.9mx 5.9t	5.5	5.3	5.0	4.8	4.3	4.0
54																53.5mx 5.1t	4.7	4.5	4.4	3.8	3.5
56																	4.3	4.1	4.0	3.4	3.1
58																	56.1mx 4.2t	3.8	3.6	3.0	2.7
60																		58.7mx 3.6t	3.3	2.7	2.4

- Note: ① The rated load shown in the table is the weight of heavy thing which is lifted smoothly by crane on level and hard ground without traveling.
 ② The rated load should include the mass of hook block and other components. The actual hoisting duty shall be the value of rated load in the table deducting mass of all lifting tools (mass of 150t hook block is 2246kg, that of 100t hook block is 1280kg, that of 50t hook block is 685kg, that of 25t hook block is 463kg and that of 9t hook block is 246kg).
 ③ All the values in load table are applicable to 360j revolution.
 ④ Values in the table do not include wind load, inertial load, impact load and other additional load. When wind speed exceeds Class 6, operation should be stopped.

Jib Combination

Jib length (m)	Main Boom Insert		Main Boom Length (m)	Angle between Main Boom and Jib
	3m	6m		
13	1	-	27—75	15°, 30°
19	1	1	27—69	15°, 30°
25	1	2	33—69	15°, 30°
31	1	3	39—69	15°, 30°

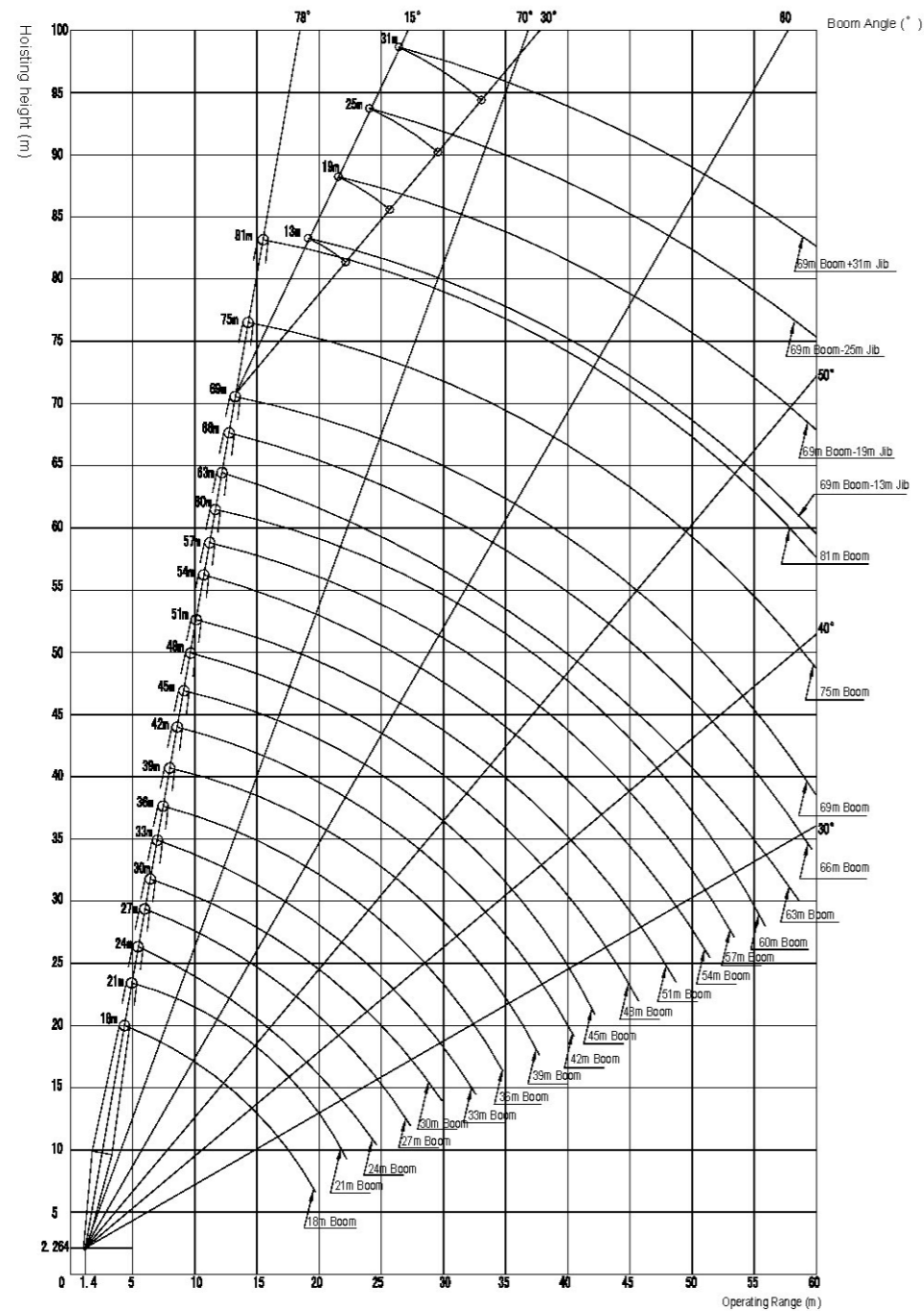




SCC1500C Hydraulic Crawler Crane



Operation Scope



SCC1500C Hydraulic Crawler Crane Lifting Height and Operation Scope Curve

Jib Load Chart

27m Basic boom

Unit: t

Jib Length (m)	13		19		
	Setting Angle of Jib	15°	30°	15°	30°
12.0	12.3m x 13.0t				
14.0	13.0	15.1m x 9.0t	14.9m x 8.0t		
16.0	13.0	9.0	8.0		
18.0	13.0	9.0	8.0	19.1m x 6.0t	
20.0	13.0	9.0	8.0	6.0	
22.0	23.2m x 13.0t	9.0	8.0	6.0	
24.0	12.7	9.0	8.0	6.0	
26.0	24.9m x 12.3t	24.9m x 9.0t	24.9m x 8.0t	24.9m x 6.0t	
28.0					

30m Basic boom

Unit: t

Jib Length (m)	13		19		
	Setting Angle of Jib	15°	30°	15°	30°
12.0	12.9m x 13.0t				
14.0	13.0	15.7m x 9.0t	15.5m x 8.0t		
16.0	13.0	9.0	8.0		
18.0	13.0	9.0	8.0	19.6m x 6.0t	
20.0	13.0	9.0	8.0	6.0	
22.0	13.0	9.0	8.0	6.0	
24.0	24.8m x 13.0t	9.0	8.0	6.0	
26.0	12.5	9.0	8.0	6.0	
28.0	27.5m x 11.9t	27.5m x 9.0t	27.5m x 8.0t	27.5m x 6.0t	

33m Basic boom

Unit: t

Jib Length (m)	13		19		25		
	Setting Angle of Jib	15°	30°	15°	30°	15°	30°
12.0	13.4m x 13.0t						
14.0	13.0						
16.0	13.0	16.3m x 9.0t	16.1m x 8.0t				
18.0	13.0	9.0	8.0		18.7m x 5.0t		
20.0	13.0	9.0	8.0	20.2m x 6.0t	5.0		
22.0	13.0	9.0	8.0	6.0	5.0		
24.0	13.0	9.0	8.0	6.0	5.0	24.2m x 4.6t	
26.0	13.0	9.0	8.0	6.0	5.0	4.6	
28.0	12.3	9.0	8.0	6.0	5.0	4.6	
30.0	30.1m x 11.6t	30.1m x 9.0t	30.1m x 8.0t	30.1m x 6.0t	30.1m x 5.0t	30.1m x 4.6t	

36m Basic boom

Unit: t

Jib Length (m)	13		19		25		
	Setting Angle of Jib	15°	30°	15°	30°	15°	30°
14.0	14.1m x 13.0t						
16.0	13.0	16.9m x 9.0t	16.7m x 8.0t				
18.0	13.0	9.0	8.0		19.3m x 5.0t		
20.0	13.0	9.0	8.0	20.8m x 6.0t	5.0		
22.0	13.0	9.0	8.0	6.0	5.0		
24.0	13.0	9.0	8.0	6.0	5.0	24.7m x 4.6t	
26.0	27.6m x 13.0t	9.0	8.0	6.0	5.0	4.6	
28.0	12.8	9.0	8.0	6.0	5.0	4.6	
30.0	12.2	9.0	8.0	6.0	5.0	4.6	
32.0	11.6	9.0	8.0	6.0	5.0	4.6	
34.0	32.7m x 11.4t	32.7m x 9.0t	32.7m x 8.0t	32.7m x 6.0t	32.7m x 5.0t	32.7m x 4.6t	



SCC1500C Hydraulic Crawler Crane



Jib Load Chart

39m Basic boom

Unit: t

Jib Length (m) Setting Angle of Jib Operating Range (m)	13		19		25		31	
	15°	30°	15°	30°	15°	30°	15°	30°
14.0	14.6mx13.0t							
16.0	13.0	17.4mx9.0t	17.2mx 8.0t					
18.0	13.0	9.0	8.0		19.9mx 5.0t			
20.0	13.0	9.0	8.0	21.4mx6.0t	5.0			
22.0	13.0	9.0	8.0	6.0	5.0		22.5mx3.0t	
24.0	13.0	9.0	8.0	6.0	5.0	25.3mx4.6t	3.0	
26.0	13.0	9.0	8.0	6.0	5.0	4.6	3.0	
28.0	29.0mx13.0t	9.0	8.0	6.0	5.0	4.6	3.0	29.2mx2.6t
30.0	12.7	9.0	8.0	6.0	5.0	4.6	3.0	2.6
32.0	12.1	9.0	8.0	6.0	5.0	4.6	3.0	2.6
34.0	11.5	9.0	8.0	6.0	5.0	4.6	3.0	2.6
36.0	35.3mx11.5t	35.3mx9.0t	35.3mx8.0t	35.3mx6.0t	35.3mx5.0t	35.3mx4.6t	35.3mx3.0t	35.3mx2.6t

45m Basic boom

Unit: t

Jib Length (m) Setting Angle of Jib Operating Range (m)	13		19		25		31	
	15°	30°	15°	30°	15°	30°	15°	30°
14.0	15.7mx13.0t							
16.0	13.0							
18.0	13.0	18.6mx9.0t	18.4mx8.0t					
20.0	13.0	9.0	8.0		21.0mx 5.0t			
22.0	13.0	9.0	8.0	22.5mx6.0t	5.0			23.6mx3.0t
24.0	13.0	9.0	8.0	6.0	5.0			3.0
26.0	13.0	9.0	8.0	6.0	5.0	26.4mx4.6t	3.0	
28.0	13.0	9.0	8.0	6.0	5.0	4.6	3.0	
30.0	30.7mx13.0t	9.0	8.0	6.0	5.0	4.6	3.0	30.4mx2.6t
32.0	12.2	9.0	8.0	6.0	5.0	4.6	3.0	2.6
34.0	11.2	9.0	8.0	6.0	5.0	4.6	3.0	2.6
36.0	10.3	9.0	8.0	6.0	5.0	4.6	3.0	2.6
38.0	9.5	39.5mx 9.0t	8.0	6.0	5.0	4.6	2.9	2.55
40.0	8.8	8.8	8.0	6.0	5.0	4.6	2.8	2.50
42.0	40.5mx8.6t	40.5mx8.6t	40.5mx8.0t	40.5mx6.0t	40.5mx5.0t	40.5mx4.6t	40.5mx2.75t	40.5mx2.45t

42m Basic boom

Unit: t

Jib Length (m) Setting Angle of Jib Operating Range (m)	13		19		25		31	
	15°	30°	15°	30°	15°	30°	15°	30°
14.0	15.2mx13.0t							
16.0	13.0		17.8mx8.0t					
18.0	13.0	9.0	8.0					
20.0	13.0	9.0	8.0	21.9mx6.0t	20.4mx5.0t			
22.0	13.0	9.0	8.0	6.0	5.0		23.1mx3.0t	
24.0	13.0	9.0	8.0	6.0	5.0	25.9mx4.6t	3.0	
26.0	13.0	9.0	8.0	6.0	5.0	4.6	3.0	
28.0	13.0	9.0	8.0	6.0	5.0	4.6	3.0	29.8mx2.6t
30.0	13.0	9.0	8.0	6.0	5.0	4.6	3.0	2.6
32.0	12.3	9.0	8.0	6.0	5.0	4.6	3.0	2.6
34.0	11.3	9.0	8.0	6.0	5.0	4.6	3.0	2.6
36.0	10.4	9.0	8.0	6.0	5.0	4.6	3.0	2.5
38.0	37.9mx9.0t	37.9mx9.0t	37.9mx8.0t	37.9mx6.0t	37.9mx5.0t	37.9mx4.6t	37.9mx2.9t	37.9mx2.4t

48m Basic boom

Unit: t

Jib Length (m) Setting Angle of Jib Operating Range (m)	13		19		25		31	
	15°	30°	15°	30°	15°	30°	15°	30°
16.0	16.3mx13.0t							
18.0	13.0	19.1mx9.0t	18.9mx8.0t					
20.0	13.0	9.0	8.0		21.6mx5.0t			
22.0	13.0	9.0	8.0	23.1mx6.0t	5.0			
24.0	13.0	9.0	8.0	6.0	5.0		24.2mx3.0t	
26.0	13.0	9.0	8.0	6.0	5.0	27.0mx4.6t	3.0	
28.0	13.0	9.0	8.0	6.0	5.0	4.6	3.0	
30.0	30.5mx13.0t	9.0	8.0	6.0	5.0	4.6	3.0	31.0mx2.6t
32.0	12.1	9.0	8.0	6.0	5.0	4.6	3.0	2.6
34.0	11.0	9.0	8.0	6.0	5.0	4.6	3.0	2.6
36.0	10.1	9.0	8.0	6.0	5.0	4.6	3.0	2.6
38.0	9.3	38.8mx9.0t	8.0	6.0	5.0	4.6	3.0	2.55
40.0	8.6	8.6	8.0	6.0	5.0	4.6	2.9	2.5
42.0	8.0	8.0	8.0	6.0	5.0	4.6	2.8	2.45
44.0	43.1mx7.7t	43.1mx7.7t	43.1mx7.7t	43.1mx6.0t	43.1mx5.0t	43.1mx4.6t	43.1mx2.75t	43.1mx2.4t