








Mechanisms

		m/min	t	m/min	t	ch-Ps hp	kW	
Hoisting	 33 PC 15	6.2	3	3.1	6	33	24	320m >320m*
		38	3	19	6			
		76	1.5	38	3			
Trolleying	 4 D3 V3	15 ⇒ 30 ⇒ 58 m/min		4	3			
Slewing	 RCV 146	0 ⇒ 0.8 tr/min (rpm)		2 X 6	2 X 4.4			
Travelling	 SB 16 A R ≥ 10M RT 324	12.5 ⇒ 25 m/min		2 X 7	2 X 5.2			
CEI 38 	IEC 38			Generator Set				
400 V (+6% - 10%) 50 Hz		33 PC : 50 kVA		*				

* Please consult us.



GROVE
POTAIN 

Manitowoc Crane Group Asia Pte Ltd
Manitowoc Crane Group

26 Benoi Road
Singapore 629 898
Tel: 65-6861 7133
Fax (Admin/Sales) : 65-6862 4040
Fax (Service/Parts) : 65-6862 4142
www.manitowoccrane.com

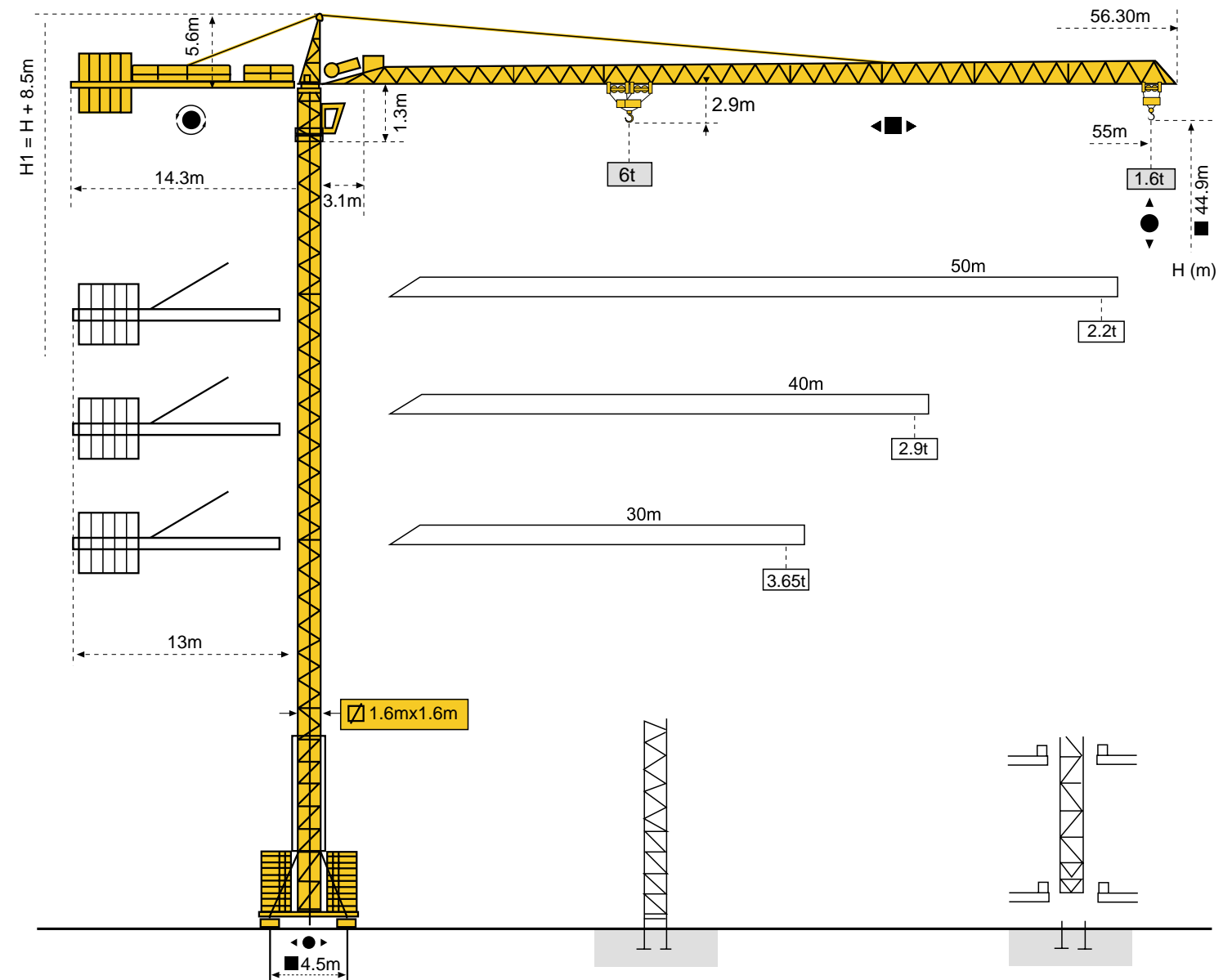
Copyright. © POTAIN 2003

MC 115B

Ref: 2003.08

Subject to Modification

MC 115B

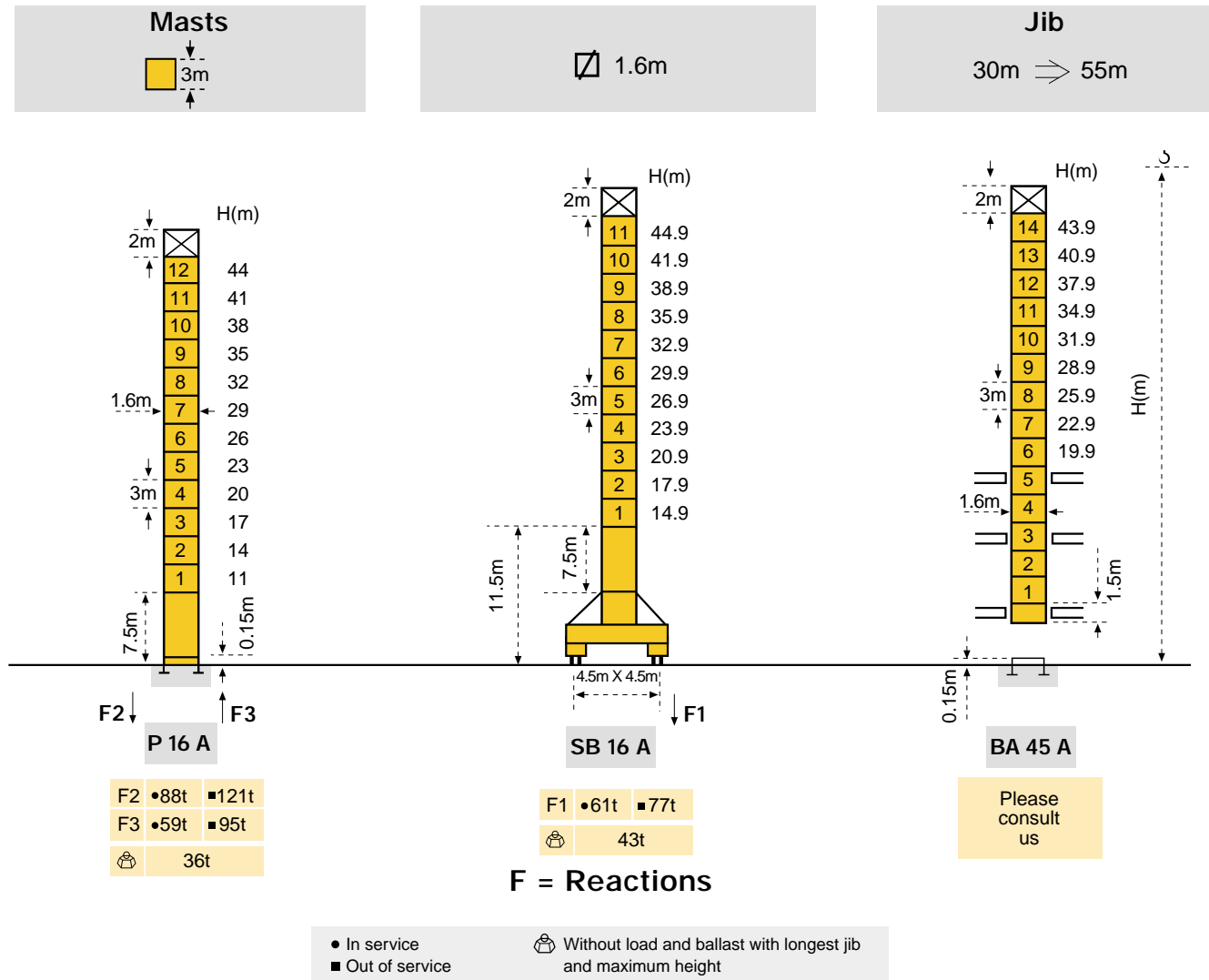


POTAIN 

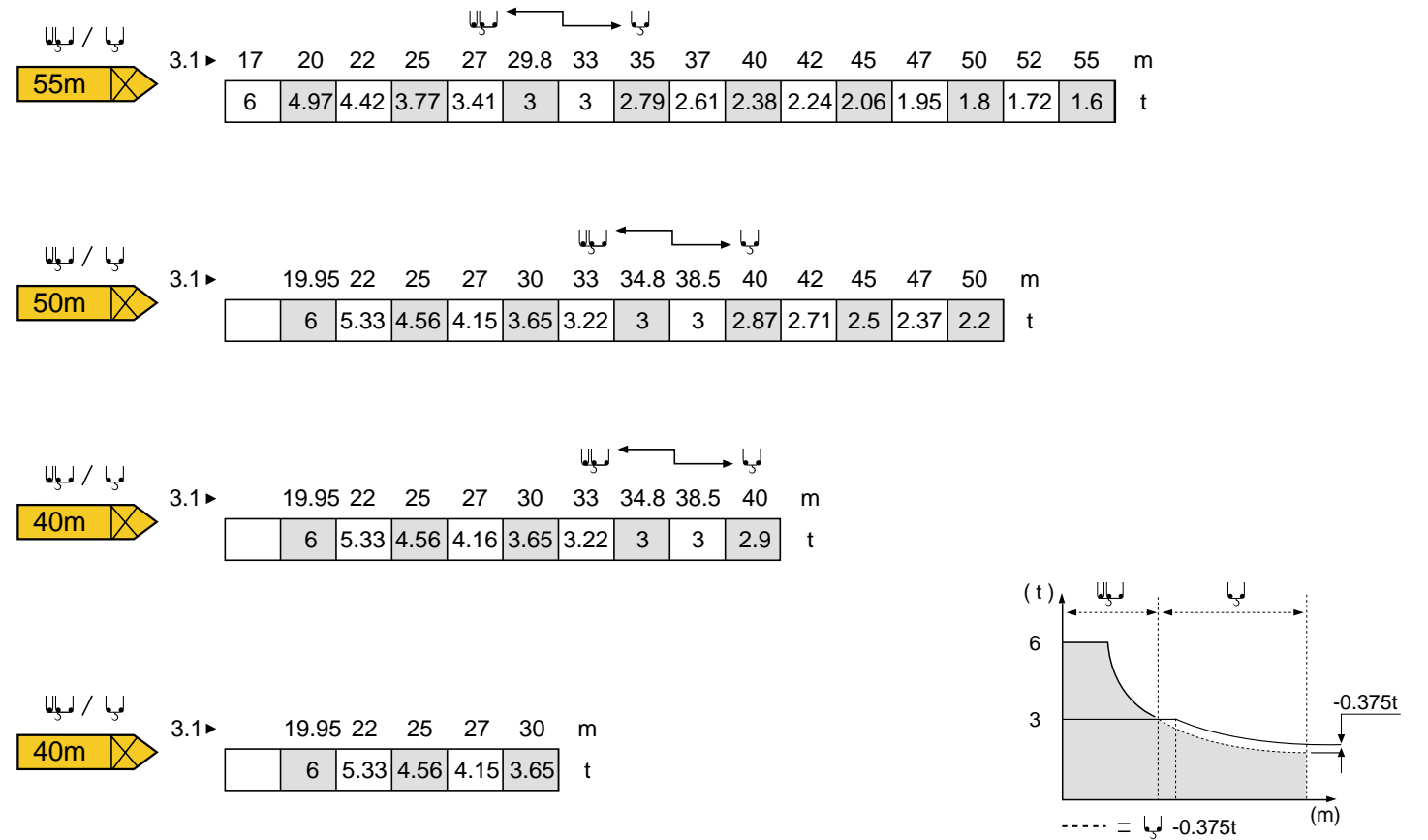


Manitowoc
Crane Group

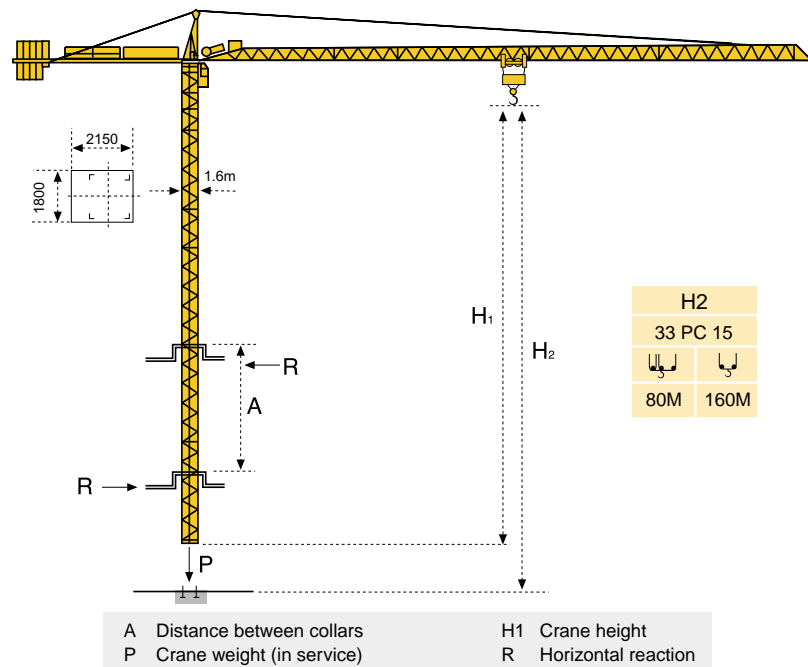
Masts / Reactions



Load diagrams



Climbing crane



Anchorage

