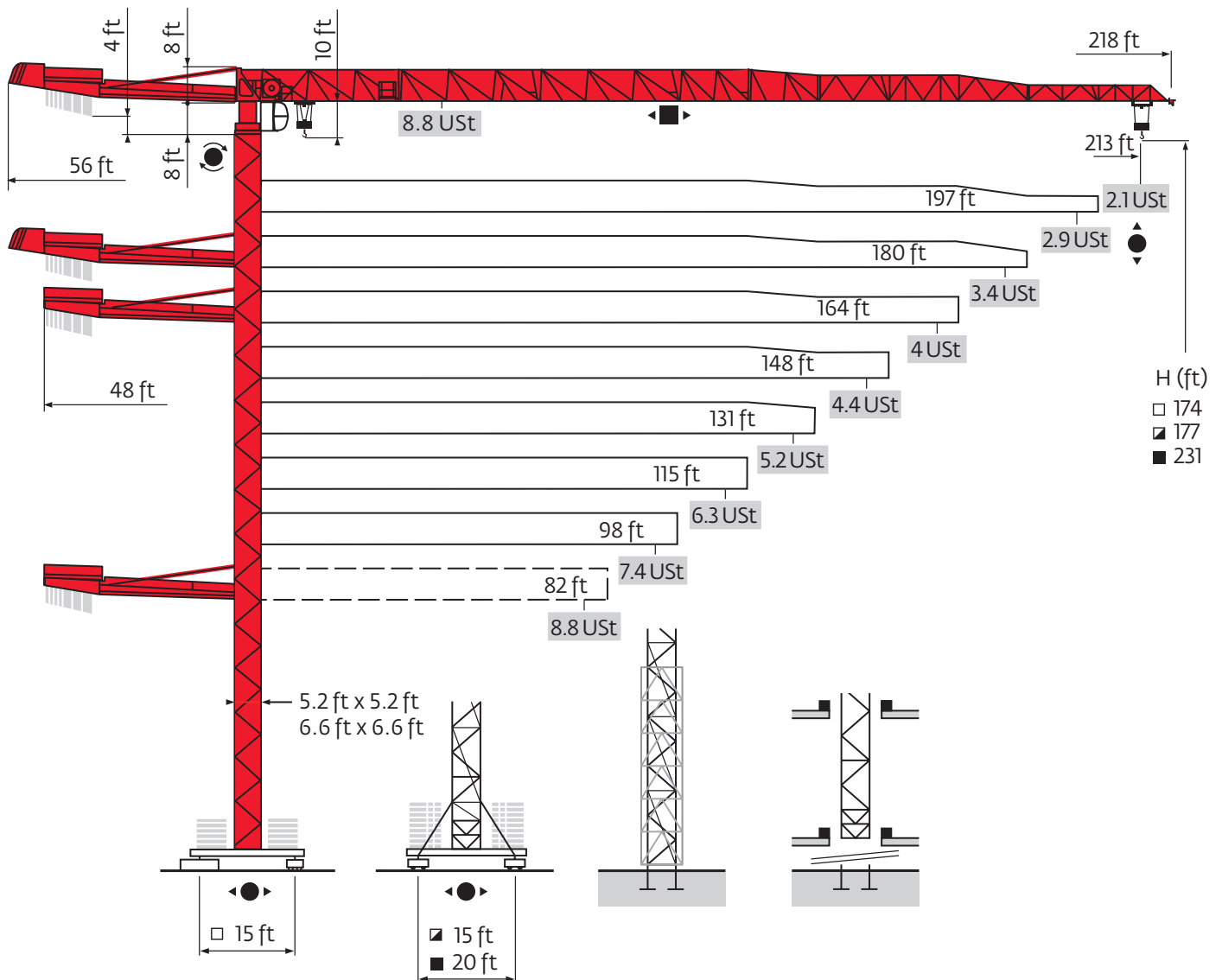


# Potain MDT 218 A

## Data Sheets

FEM 1.001-A3

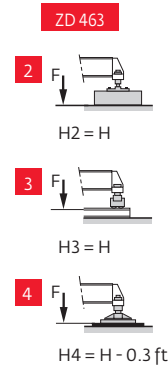
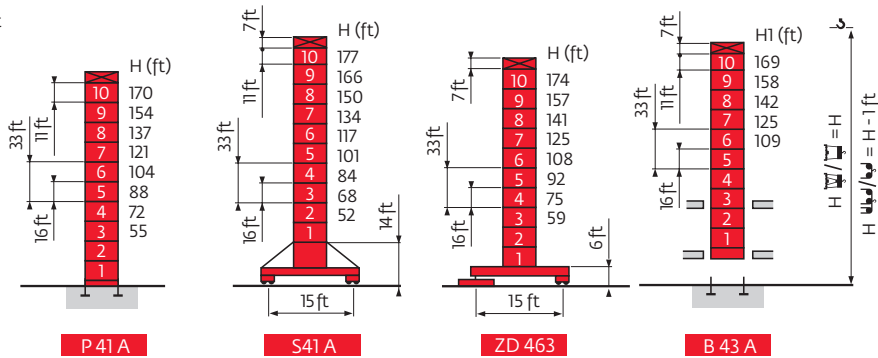
### MDT 218 A J8



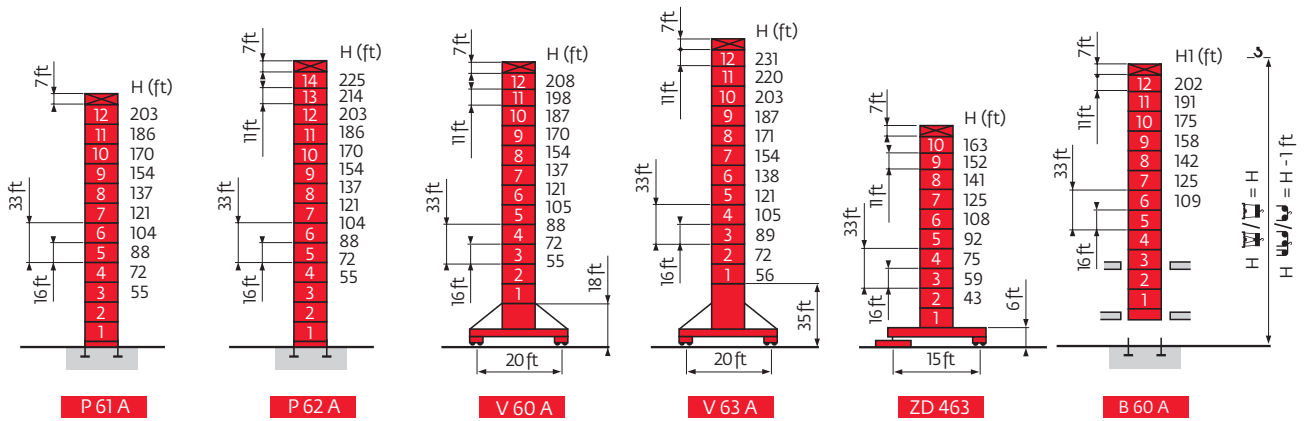
Values have been rounded

# Mast

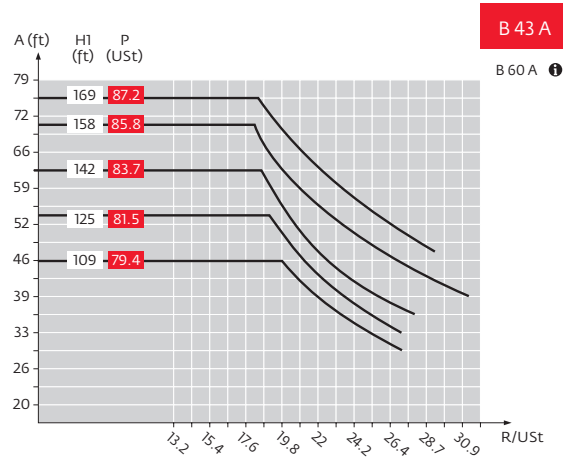
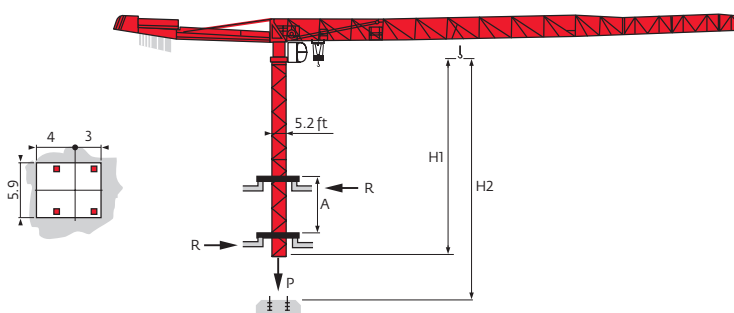
□ 5.2 ft



□ 6.6 ft



# Climbing crane

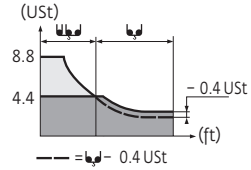


- A** Distance between collars
- H1** Crane height
- P** Crane weight (in service)
- R** Horizontal reaction
- See climbing crane

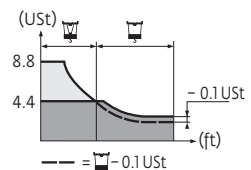
# Load charts



213 ft	10	▶	61	66	72	82	89	98	105	109	117	121	131	138	148	154	164	171	180	187	197	203	213	ft
▲▲▲▲			8.8	8	7.3	6.2	5.6	5.0	4.6	4.4	4.4	4.3	3.9	3.6	3.4	3.2	3	2.9	2.6	2.5	2.4	2.3	2.1	USt
197 ft	10	▶	71	72	82	89	98	105	115	121	126	136	138	148	154	164	171	180	187	197	ft			
▲▲▲▲			8.8	8.6	7.4	6.7	6	5.5	5	4.6	4.4	4.4	4.4	4.1	3.9	3.5	3.4	3.2	3	2.9	USt			
180 ft	10	▶	75	82	89	98	105	115	121	131	134	145	148	154	164	171	180	ft						
▲▲▲▲			8.8	7.9	7.3	6.4	6	5.3	5	4.5	4.4	4.4	4.3	4.1	3.9	3.6	3.4	USt						
164 ft	10	▶	78	82	89	98	105	115	121	131	138	140	152	154	164	ft								
▲▲▲▲			8.8	8.4	7.6	6.7	6.3	5.6	5.3	4.7	4.5	4.4	4.4	4.3	4	USt								
148 ft	10	▶	81	82	89	98	105	115	121	131	138	148	ft											
▲▲▲▲			8.8	8.6	7.9	7.1	6.5	5.8	5.5	5	4.6	4.3	USt											
131 ft	10	▶	83	89	98	105	115	121	131	ft														
▲▲▲▲			8.8	8.3	7.3	6.7	6.1	5.7	5.2	USt														
115 ft	10	▶	84	89	98	105	115	ft																
▲▲▲▲			8.8	8.4	7.4	6.8	6.2	USt																
98 ft	10	▶	84	89	98	ft																		
▲▲▲▲			8.8	8.3	7.3	USt																		
82 ft	10	▶	82	ft																				
▲▲▲▲			8.8	USt																				



213 ft	8	▶	61	66	72	82	89	98	105	110	112	115	121	131	138	148	154	164	171	180	187	197	203	213	ft
▲▲▲▲			8.8	8.2	7.3	6.3	5.7	5.1	4.6	4.4	4.4	4.3	4	3.6	3.4	3.1	3	2.8	2.6	2.4	2.3	2.1	2	1.9	USt
197 ft	8	▶	71	72	82	89	98	105	115	121	128	131	131	138	148	154	164	171	180	187	197	ft			
▲▲▲▲			8.8	8.6	7.5	6.8	6.1	5.6	5.1	4.7	4.4	4.4	4.4	4.2	3.7	3.6	3.3	3.2	3	2.8	2.6	USt			
180 ft	8	▶	75	82	89	98	105	115	121	131	136	139	148	154	164	171	180	ft							
▲▲▲▲			8.8	7.9	7.3	6.5	6	5.4	5.1	4.6	4.4	4.4	4.1	3.9	3.6	3.4	3.2	USt							
164 ft	8	▶	79	82	89	98	105	115	121	131	138	142	145	148	154	164	ft								
▲▲▲▲			8.8	8.4	7.7	6.8	6.3	5.7	5.3	4.9	4.6	4.4	4.4	4.3	4.1	3.8	USt								
148 ft	8	▶	81	82	89	98	105	115	121	131	138	148	ft												
▲▲▲▲			8.8	8.7	7.9	7.1	6.5	5.8	5.5	5.1	4.7	4.4	USt												
131 ft	8	▶	84	89	98	105	115	121	131	ft															
▲▲▲▲			8.8	8.3	7.3	6.8	6.2	5.7	5.2	USt															
115 ft	8	▶	85	89	98	105	115	ft																	
▲▲▲▲			8.8	8.5	7.5	6.9	6.3	USt																	
98 ft	8	▶	85	89	98	ft																			
▲▲▲▲			8.8	8.4	7.4	USt																			
82 ft	8	▶	82	ft																					
▲▲▲▲			8.8	USt																					









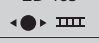





## Counter-jib ballast

2425 lb - 7937 lb	
▲▲▲▲	(lb)
213 ft	41,446
197 ft	41,446
180 ft	41,446
164 ft	41,446
148 ft	39,021
131 ft	36,596
115 ft	34,171
98 ft	31,746
82 ft	28,660

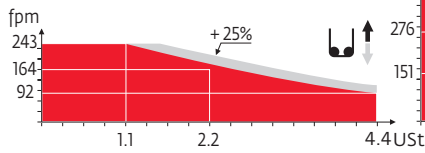
## Base ballast

∅ 5.2 ft	S41A	▲●	H (ft)	177	166	150	134	117	101	84	68	52			
			▲ (USt)	126	106	93	86	86	86	86	86	86			
∅ 5.2 ft	ZD 463	●	H (ft)	174	157	141	125	108	92	75	59				
			▲ (USt)	116°	94	83	83	83	83	83	83				
∅ 6.6 ft	V 60 A	●	H (ft)	208	198	187	170	154	137	121	105	88	72	55	
			▲ (USt)	146	119	106	79	53	40	40	40	40	40	40	
∅ 6.6 ft	V 63 A	●	H (ft)	231	220	203	187	171	154	138	121	105	89	72	56
			▲ (USt)	185	172	132	106	79	53	40	40	40	40	40	40
∅ 6.6 ft	ZD 463	●	H (ft)	163	152	141	125	108	92	75	59	43			
			▲ (USt)	121°	94	77	77	77	77	77	77	77			

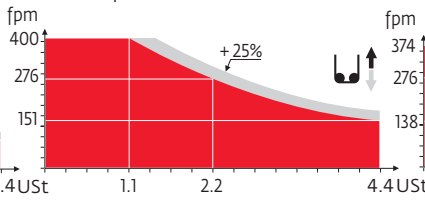
# Mechanisms

														hp	kW					
	33 LVF20 Optima	fpm	7	29	92	118	164	243	4	14	46	59	82	121	30	22	951 ft			
		USt	4.4	4.4	4.4	3.3	2.2	1.1	8.8	8.8	8.8	6.6	4.4	2.2						
	50 LVF20 Optima	fpm	12	49	151	190	276	400	6	25	75	95	138	200	50	37	1191 ft			
		USt	4.4	4.4	4.4	3.3	2.2	1.1	8.8	8.8	8.8	6.6	4.4	2.2						
	50 LVF20 GH Optima	fpm	12	46	138	184	276	374	6	23	69	92	138	187	50	37	1985 ft			
		USt	4.4	4.4	4.4	3.3	2.2	1.1	8.8	8.8	8.8	6.6	4.4	2.2						
	7 DVF 4	fpm	0 - 259												6.5	4.8				
	RVF152 Optima +	rpm	0 - 0.8												2 x 5.5	2 x 4				
	ZD 463 RT443 AI2V	fpm	59 - 118												4 x 6	4 x 4.4				
	S 41 A RT443 AI2V R ≥ 10 m	fpm	59 - 118												4 x 6	4 x 4.4				
	V 60 A RT544 AI2V R ≥ 13 m	fpm	53 - 105												4 x 8.4	4 x 6.2				
	V 63 A																			
CEI 38 						IEC 38						<b>kVA</b>								
480 V (+6% -10%) 60 Hz												33 LVF : 50 kVA 50 LVF : 65 kVA								

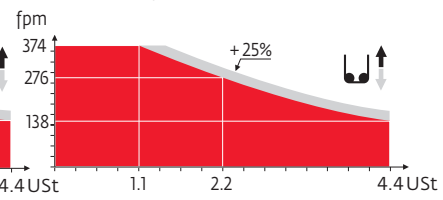
33 LVF 20 Optima







50 LVF 20 Optima

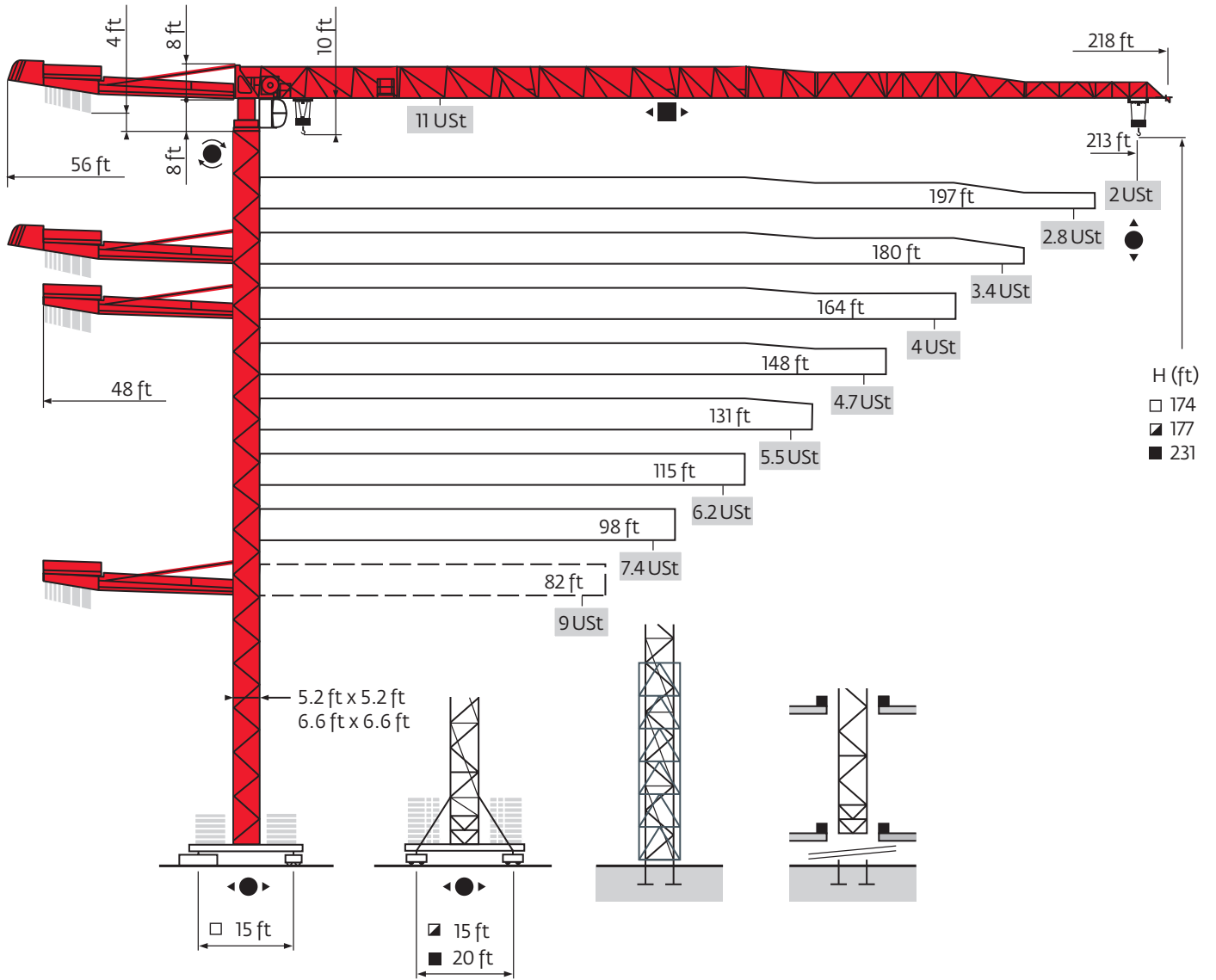


50 LVF 20 GH Optima



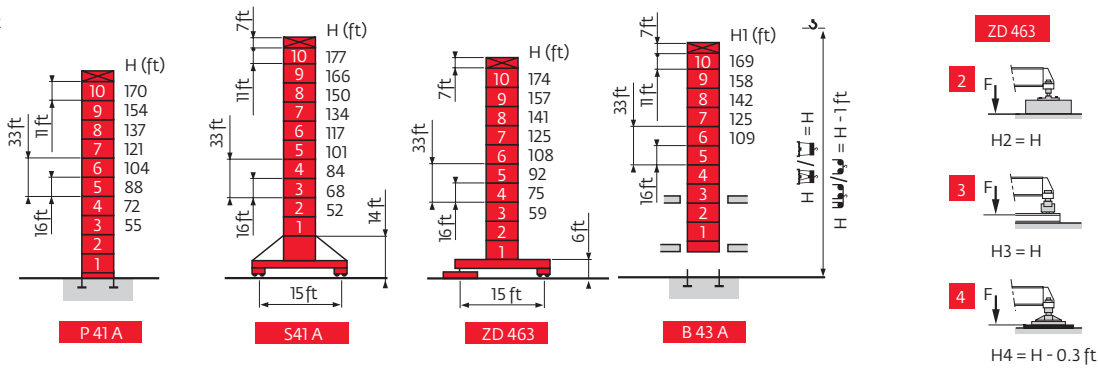
	Hoisting
	Trolleying
	Slewing
	Traveling

# MDT 218 A J10

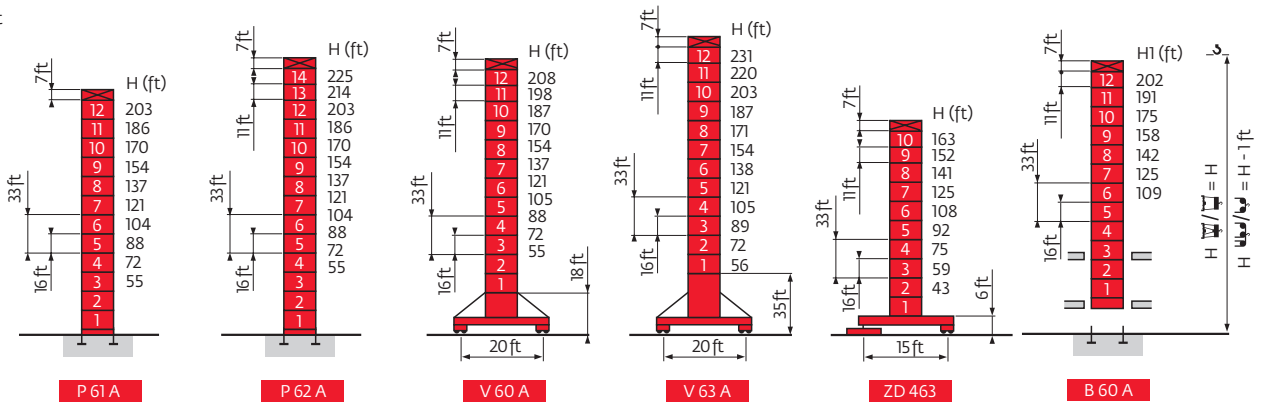


# Mast

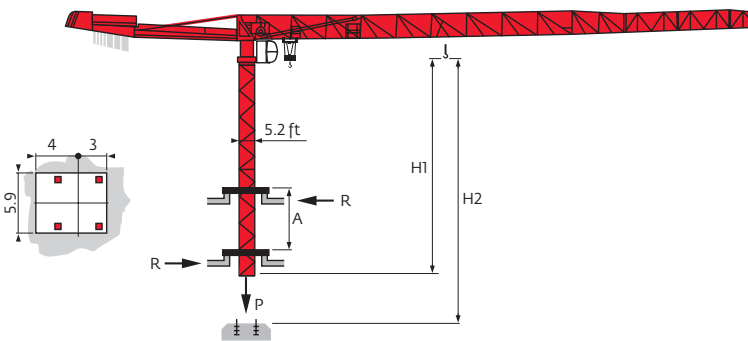
☑ 5.2 ft



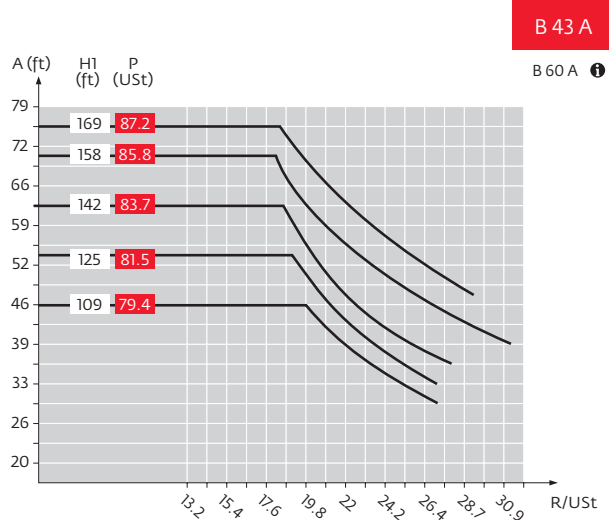
☑ 6.6 ft



# Climbing crane



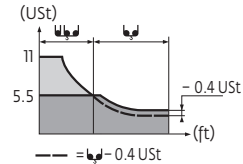
- A** Distance between collars
- H1** Crane height
- P** Crane weight (in service)
- R** Horizontal reaction
- See climbing crane



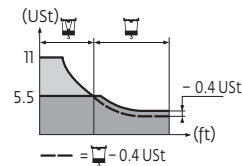
# Load charts



213 ft	10	▶	49	56	66	72	82	88	94	98	105	115	121	131	138	148	154	164	171	180	187	197	203	213	ft
▲▲▲▲			11	9.5	7.8	6.9	6	5.5	5.5	5.3	4.9	4.4	4.1	3.3	3.5	3.3	3.1	2.9	2.7	2.5	3.3	2.3	2.1	2	USt
197 ft	10	▶	57	66	72	82	89	98	102	110	115	121	131	138	148	154	164	171	180	187	197	ft			
▲▲▲▲			11	9.4	8.4	7.2	6.5	5.7	5.5	5.5	5.3	5	4.5	4.2	3.9	3.7	3.4	3.3	3.1	2.9	2.8	USt			
180 ft	10	▶	62	66	72	82	89	98	105	112	119	121	131	138	148	154	164	171	180	ft					
▲▲▲▲			11	10.3	9.3	7.9	7.3	6.4	6	5.5	5.5	5.4	7.7	4.6	4.3	4.1	3.9	3.6	3.4	USt					
164 ft	10	▶	64	66	72	82	89	98	105	115	117	125	131	138	148	154	164	ft							
▲▲▲▲			11	10.8	9.7	8.4	7.6	6.7	6.3	5.6	5.5	5.5	5.2	5	4.5	4.3	4	USt							
148 ft	10	▶	66	72	82	89	98	105	115	120	128	131	138	148	ft										
▲▲▲▲			11	9.9	8.6	7.8	6.9	6.5	5.8	5.5	5.5	5.4	5.1	4.7	USt										
131 ft	10	▶	68	72	82	89	98	105	115	121	123	131	ft												
▲▲▲▲			11	10.3	8.8	8.2	7.2	6.6	6	5.6	5.5	5.5	USt												
115 ft	10	▶	66	72	82	89	98	105	115	ft															
▲▲▲▲			11	10.5	9	8.3	7.4	6.8	6.1	USt															
98 ft	10	▶	69	72	82	89	98	ft																	
▲▲▲▲			11	10.4	9	8.3	7.3	USt																	
82 ft	10	▶	68	72	82	ft																			
▲▲▲▲			11	10.4	8.9	USt																			



213 ft	10	▶	50	56	66	72	82	89	90	92	98	105	115	121	131	138	148	154	164	171	180	187	197	203	213	ft
▲▲▲▲			11	9.7	8	7.2	6.2	5.6	5.5	5.5	5.1	4.6	4.2	3.9	3.5	3.3	3	2.9	2.6	2.5	2.3	2.2	2	1.9	1.8	USt
197 ft	10	▶	58	66	72	82	89	98	104	106	115	121	131	138	148	154	164	171	180	187	197	ft				
▲▲▲▲			11	9.5	8.5	7.4	6.7	6	5.5	5.5	5.1	4.7	4.3	4.1	3.7	3.5	3.3	3.1	2.9	2.7	2.5	USt				
180 ft	10	▶	62	66	72	82	89	98	105	113	115	121	131	138	148	154	164	171	180	ft						
▲▲▲▲			11	10.4	9.3	8	7.3	6.5	6	5.5	5.5	5.2	4.7	4.4	4.1	3.9	3.6	3.4	3.2	USt						
164 ft	10	▶	65	66	72	82	89	98	105	115	118	120	121	131	138	148	154	164	ft							
▲▲▲▲			11	10.8	9.7	8.4	7.7	6.8	6.3	5.7	5.5	5.5	5.4	5	4.7	4.3	4.1	3.8	USt							
148 ft	10	▶	66	72	82	89	98	105	115	121	124	131	138	148	ft											
▲▲▲▲			11	10	8.7	7.9	7.1	6.5	5.8	5.5	5.5	5.2	4.9	4.5	USt											
131 ft	10	▶	69	72	82	89	98	105	115	121	125	128	131	ft												
▲▲▲▲			11	10.4	9	8.3	7.3	6.8	6.1	5.7	5.5	5.5	5.3	USt												
115 ft	10	▶	70	72	82	89	98	105	115	ft																
▲▲▲▲			11	10.6	9.1	8.4	7.5	6.9	6.2	USt																
98 ft	10	▶	69	72	82	89	98	ft																		
▲▲▲▲			11	10.5	9.1	8.4	7.4	USt																		
82 ft	10	▶	69	72	82	ft																				
▲▲▲▲			11	10.5	9	USt																				



# Counter-jib ballast

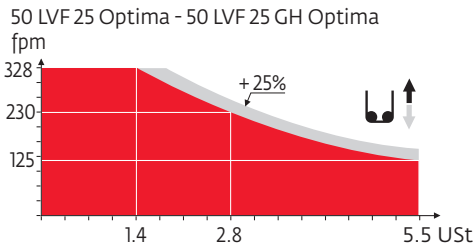
	2425 lb - 7937 lb	
▲▲▲▲		(lb)
213 ft		41,446
197 ft		41,446
180 ft	56 ft	41,446
164 ft		41,446
148 ft		39,021
131 ft		36,596
115 ft	48 ft	34,171
98 ft		31,746
82 ft		28,660

# Base ballast

5.2 ft	S 41 A	●▶	H (ft)	177	166	150	134	117	101	84	68	52
			(USt)	126	106	93	86	86	86	86	86	86
5.2 ft	ZD 463	●▶	H (ft)	174	157	141	125	108	92	75	59	
			(USt)	116°	94	83	83	83	83	83	83	
6.6 ft	V 60 A	●▶	H (ft)	208	198	187	170	154	137	121	105	88
			(USt)	146	119	106	79	53	40	40	40	40
6.6 ft	V 63 A	●▶	H (ft)	231	220	203	187	171	154	138	121	105
			(USt)	185	172	132	106	79	53	40	40	40
6.6 ft	ZD 463	●▶	H (ft)	163	152	141	125	108	92	75	59	43
			(USt)	121°	94	77	77	77	77	77	77	77

# Mechanisms

																hp	kW				
	50 LVF25 Optima	fpm	10 - 39 - 125 - 164 - 230 - 328							5 - 20 - 62 - 82 - 115 - 164							50	37	912 ft		
	50 LVF25 GH Optima	USt	5.5	5.5	5.5	4.1	2.8	1.4	11	11	11	8.3	5.5	2.8	50	37	1690 ft				
	7 DVF4	fpm	0 - 259														6.5	4.8			
	RVF152 Optima +	rpm	0 - 0.8														2 x 5.5	2 x 4			
ZD463 	RT443 A12V	fpm	59 - 118														4 x 6	4 x 4.4			
S41A 	RT443 A12V R ≥ 10m	fpm	59 - 118														4 x 6	4 x 4.4			
V60A 	RT544 A12V R ≥ 13m	fpm	53 - 105														4 x 8.4	4 x 6.2			
V63A 																					
CEI 38		IEC 38		kVA																	
480 V (+6% -10%) 60 Hz																50 LVF : 65 kVA					



- Hoisting
- Trolleying
- Slewing
- Traveling

Constant improvement and engineering progress make it necessary that we reserve the right to make specification, equipment and price changes without notice. Illustrations shown may include optional equipment and accessories, and may not include all standard equipment.



www.manitowoc.com

## Regional Headquarters

### Americas

Manitowoc, Wisconsin, USA  
Tel: +1 920 684 6621  
Fax: +1 920 683 6277

Shady Grove, Pennsylvania, USA  
Tel: +1 717 597 8121  
Fax: +1 717 597 4062

### Europe, Middle East, Africa

Ecully, France  
Tel: +33 472 18 2020  
Fax: +33 472 18 2000

### Asia - Pacific

Shanghai, China  
Tel: +86 21 6457 0066  
Fax: +86 21 6457 4955

Potain MDT 218 A