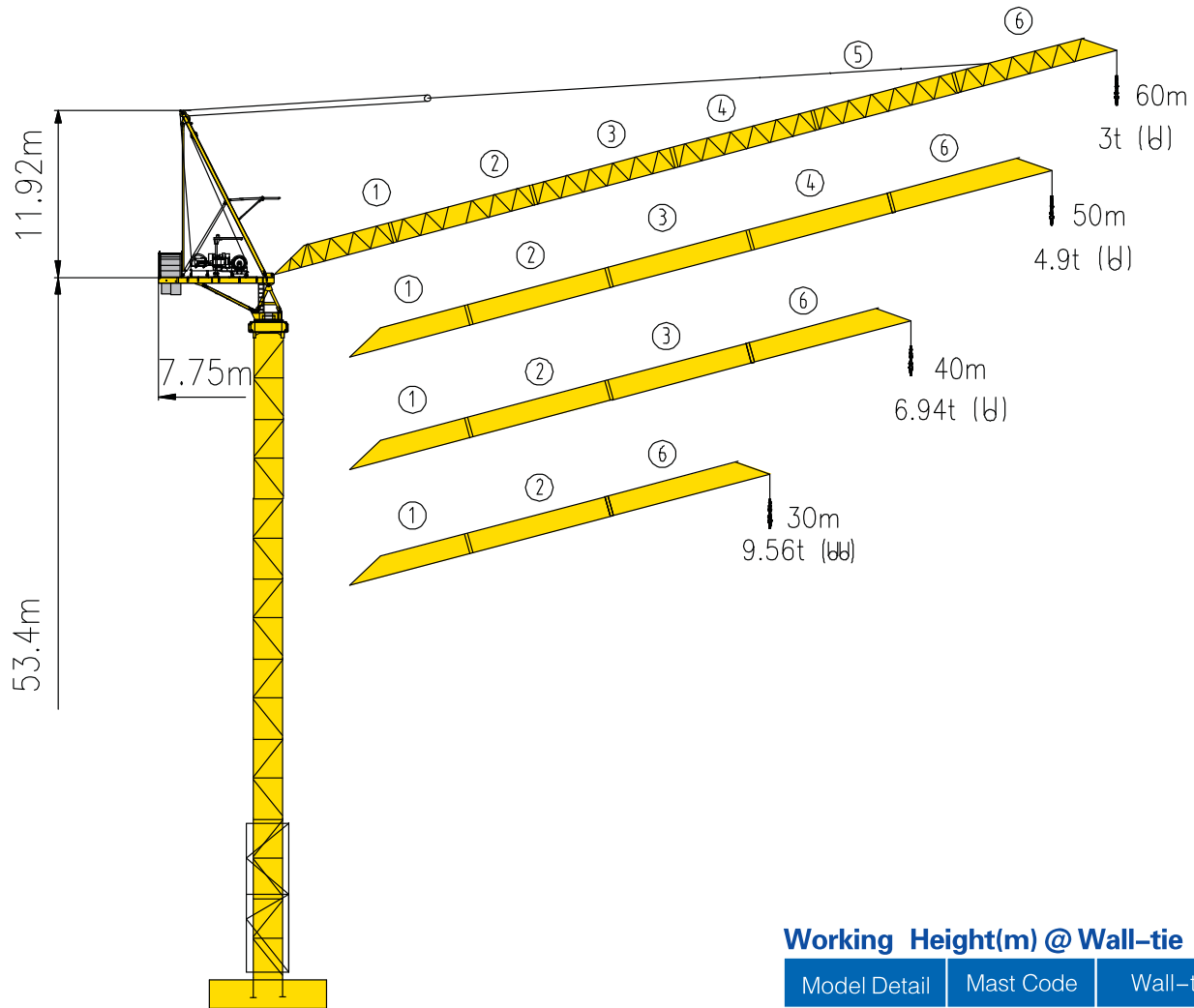


# TCR6030-16



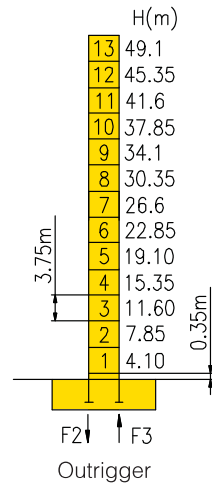
## Counter-jib ballast

		(Kg)	PHZ1000	PHZ3000	PHZ4000	PHZ4000A	PHZ2750
60m	7.75m	24500	1	2	2	1	2
50m	7.75m	23500	0	2	2	1	2
40m	7.75m	20500	0	1	2	1	2
30m	7.75m	17500	0	0	2	1	2

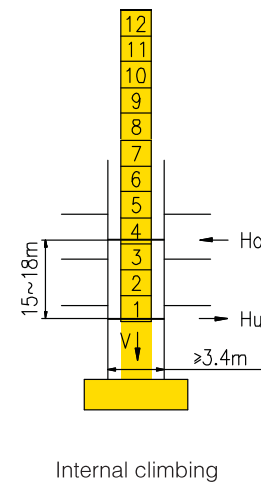
## Working Height(m) @ Wall-tie Location(m)

Model Detail	Mast Code	Wall-tie #1	Wall-tie #2	Wall-tie #3	Wall-tie #4	Wall-tie #5
TCR6030-16	HQ1-C	75.35 @ 38.8	101.6 @ 65.05	127.85 @ 91.3	154.1 @ 117.55	180.35 @ 143.8

## Masts Reactions



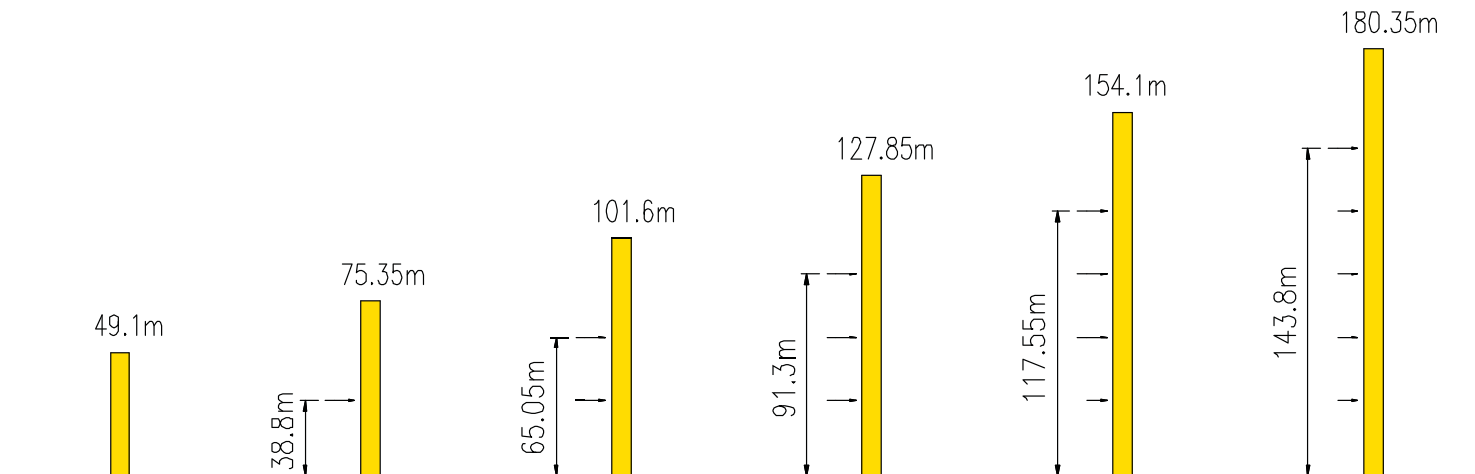
Outrigger	
F2	● 209t
	■ 238t
F3	● 155t
	■ 184t
	⚠ 108t




Internal climbing	
Ho	● 25~30.5t
	■ 21.5~27t
Hu	● 21~26.5t
	■ 9.5~14.5t
V	109t

● Reactions in service ■ Reactions out of service  
 ⚠ Without load and ballast with longest jib and maximum height  
 ⓘ For more erecting solutions, consult us!

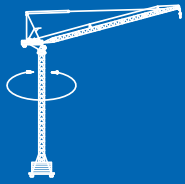
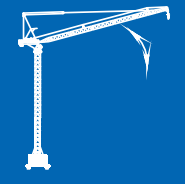

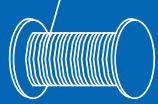

## Anchorage



## Load diagrams

		Max. Capacity m/t	20	23	25	28	30	33	35	38	40	43	45	48	50	53	55	58	60	
60m (R=59.79)	⌋	4.73—31.17m 8t	8					7.51	6.91	6.13	5.68	5.09	4.75	4.29	4.03	3.68	3.47	3.16	3 (59.79m)	
50m (R=49.84)	⌋	4—34.67m 8t	8					8	7.97	7.14	6.64	5.99	5.6	5.11	4.85 (49.84m)					
	⌋⌋	4—17.3m 16t	13.94	12.14	11.11	9.81	9.08	8.13	7.6	6.91	6.5	5.93	5.55	4.97	4.72 (49.84m)					
40m (R=39.9)	⌋	3.3—35.08m 8t	8					8	7.32	6.94 (39.9m)										
	⌋⌋	3.3—17.7m 16t	14.52	12.52	11.4	10.05	9.31	8.4	7.9	7.19	6.81 (39.9m)									
30m (R=29.9)	⌋	2.58—30m 8t	8																	
	⌋⌋	2.58—18.8m 16t	15.11	12.88	11.7	10.29	9.56 (29.9m)													

## Mechanisms

		Hoisting		QPL1690	
	Slewing	HV145B1.130A HV145B1.130A			
	0 ~ 0.7 r/min	2 × 145 Nm			
	Luffing	BPL370			
	2.7 min (15° ~ 84.5°)	37 kW			
 60 kW   600m⊙ ( 6 layers ) ⊙ Consult us If overtop	III	⊂	8t	0 ~ 35m/min	
		⊂⊂	16t	0 ~ 17.5 m/min	
	IV	⊂	4t	0 ~ 70 m/min	
		⊂⊂	8t	0 ~ 35 m/min	
		⊂	1.5t	0 ~ 90 m/min	
V	⊂⊂	3t	0 ~ 45 m/min		
	380V(+10% - 10%) 50Hz			112 kW	