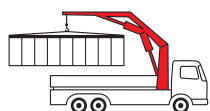


PK 50002-EH

High Performance

PALFINGER CRANE



KTL
protected

**Paltronic
50**
controlled

RRC
Radio Remote Control
operated

ISC
Integrated Stability Control
monitored

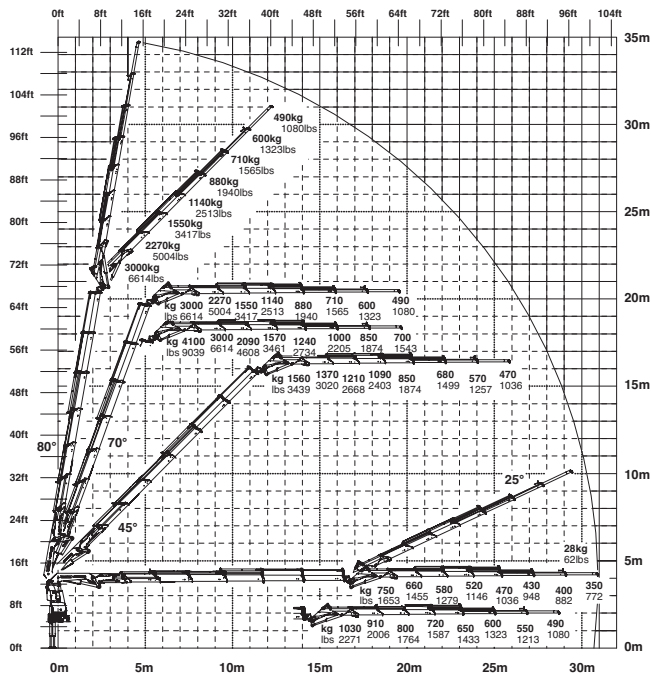
AOS
Active Oscillation Suppression
inside

The perfect introduction to the heavy-duty range

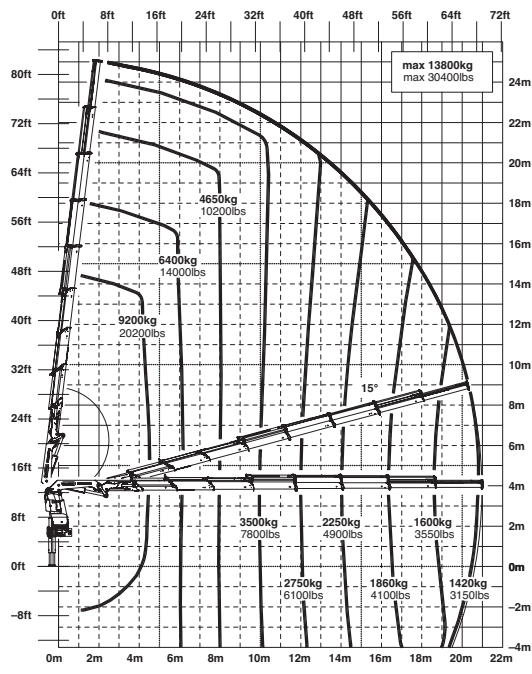
The PK 50002 EH is a milestone in crane development. Its innovative and user-friendly design, high payload and enormous hydraulic outreach will tell you why. These qualities make it the ideal crane for assembly work – but it's also the perfect all-rounder. Its double slewing drive enables a large slewing torque and very precise crane movements. The fly-jibs can be equipped with the new "DPS Plus". And last but not least, maximum service friendliness rounds out the profile of this exceptional crane by PALFINGER.

PK 5002 EH High Performance

E PJ125E JV1 DPS



G



Technical Specifications (EN 12999 H1-B3)

Max. lifting moment	47.0 mt/461.1 kNm	340090 ft.lbs
Max. lifting capacity	16800 kg/164.8 kN	37040 lbs
Max. hydraulic outreach	21.0 m	68' 11"
Max. manual outreach	25.2 m	82' 8"
Max. outreach (with fly jib)	32.5 m	106' 8"
Slewing angle	endless	
Slewing torque		
with 1 gear	4.0 mt/39.2 kNm	28910 ft.lbs
with 2 gears	5.5 mt/54.0 kNm	39830 ft.lbs

Stabilizer spread	7.8 m	25' 3"
Fitting space required	min. 1.33 m / 4' 4" max. 1.47 m / 4' 10"	
Width folded	2.51 m	8' 3"
Max. operating pressure	350 bar	5075 psi
Recommended pump capacity	from 80 l/min to 100 l/min	21.1 US gal./min to 26.4 US gal./min
Dead weight (std.)	4145 kg	9140 lbs

