

Series **400B**

product guide

features

- 56' Three-section boom
- 10 Ton rating
- Internal anti-two-block
- Self-lubricating "Easy Glide" wear pads



contents

Features

2

Mounting Configurations

3

Specifications

4

Capacities: With 18' Jib

5

Capacities: No Jib

6

Accessories

7

features

Why Buy a National Series 400B?

2



*Product may be shown with optional equipment.

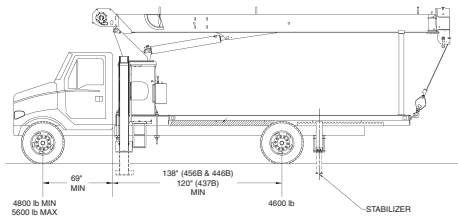
- **10 ton Rating** – The 400B provides a 10-ton capacity at a five-foot radius.
- **Self-lubricating “Easy glide” Wear Pads** – The self-lubricating pads, standard on the 400B, reduce the conditions that cause boom chatter and vibration. The net result is smoother crane operation.
- **Internal Anti-two-block** – The patent-pending design, standard on the 400B, eliminates the external reel and wire. No more snagging the reel or wire on obstructions.
- **Speedy-reeve Boom Tip and Sheave Blocks** – These standard features simplify rigging changes.
- **Pre-painted Components** – Painting crane components before assembly reduces the possibility of rust, improves serviceability and enhances the appearance of the machine.
- **Large Oil Reservoir** – Helps reduce heat build-up.
- **Redesigned Frame and Console** – Control valve is now mounted in the console, making it much easier to service.
- **Oil Filter** – The oil filter is now mounted at the tank, not in the crane frame. Filler cap is anti-splash. Reservoir has a stainless steel strainer on fill port.
- **Increased Space Inside Frame** – More room inside the frame makes the unit more easily serviceable.
- **Wiring Harness** – New crane wiring harness simplifies design and cleans up inside of console, providing easy access and service.
- **Improved Serviceability** –
 - A removable winch allows the internal telescoping cylinder to be removed quickly, without dismantling the boom.
 - Bearings on the boom extend and retract cables can be greased through access holes in the boom side plates.
 - Internal anti-two-block wire routing eliminates damage potential from external contact.
 - The boom sheave case is open, allowing access to replace the internal anti-two-block wire and to observe internal boom components.
 - Pre-paint reduces rust.
 - Internal boom parts have been reduced, facilitating rebuilding the machine.
- **National Crane Is the Market Leader** – National is number one in the production of commercial truck-mounted boom trucks. National has many programs and people directly and indirectly involved to provide our customers reliable products.
 - National has the boom truck industry’s leading test program. Every structural part of the crane is cycle tested up to 60,000 cycles at full capacity. In addition to cycle testing, each model is subjected to state-of-the-art strain gauge testing that measures metal deformation as small as one-millionth of an inch. The net result is that weak areas are caught in test, not on job sites where costly downtime occurs.
 - All outrigger, lift and telescoping cylinders are manufactured by National Crane, so that the seals, packing glands, and end plates are traced for accurate shipment of replacement parts.
 - Parts are available for all National Crane machines, even if they are 35 years old.
 - National has a formalized quality program and is ISO 9001 approved.
- **National Crane Is a Quality Product That Will Provide Years of Service**

- 10-ton (9.07 t) maximum capacity
- 84 ft. (25.60 m) maximum vertical reach with jib*
- 66 ft. (20.11 m) maximum vertical hydraulic reach main boom*
- Hydraulic Capacity Alert system (HCA)
- Proportional boom extension
- High performance planetary winch
- Maximum vertical reach is ground-level to boom tip height at maximum extension and angle with outriggers/stabilizers fully extended.

400B

mounting configurations

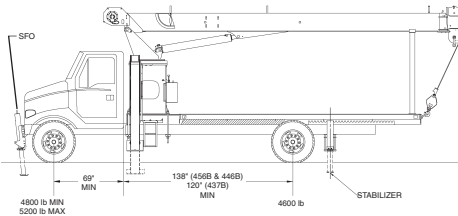
The configurations are based on the Series 400B with an 85% stability factor. The complete unit must be installed in accordance with factory requirements and a test performed to determine actual stability and counterweight requirements since individual truck chassis vary.



Configuration 1 with Subbase

| | |
|---|---|
| Working area | 180° |
| Gross Axle Weight Rating Front | 9,000 lb (4082 kg) |
| Gross Axle Weight Rating Rear | 19,000 lb (8618 kg) |
| Gross Vehicle Weight Rating | 28,000 lb (12 700 kg) |
| Wheelbase | 184 in (650 cm) on 437B, 207 in (526 cm) on 446B, 456B |
| Cab to Axle/trunnion (CA/CT) | 120 in (305 cm) on 437B, 138 in (351 cm) on 446B, 456B |
| Frame Section Modulus (SM) under crane w/110,000 PSI (758 MPa) | 10.0 in ³ (164 cm ³) |
| Frame Section Modulus (SM) over rear stabilizers: 110,000 PSI (758 MPa) | 10.0 in ³ (164 cm ³) |
| Stability Weight, Front | 4,800 lb (2177 kg) minimum, 5,600 lb (2540 kg) maximum* |
| Stability Weight, Rear | 4,600 lb (2087 kg) minimum* |
| Estimated Average Final Weight | 21,000 lb (9524 kg)** |

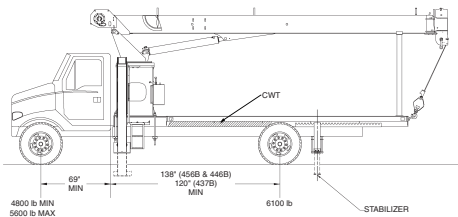
Allows the installation of Series 400B on a chassis with small frame by using standard subbase. In most cases, chassis will not require reinforcing and counterweight will not be required. This configuration gives a payload of app. 6,000 lbs (2722 kg) on minimum truck. Requires standard subbase and rear stabilizers. Full capacity work area in rear 180° of vehicle from outrigger to outrigger.



Configuration 2 with Subbase and SFO

| | |
|---|---|
| Working area | 360° |
| Gross Axle Weight Rating Front | 9,000 lb (4082 kg) |
| Gross Axle Weight Rating Rear | 19,000 lb (8618 kg) |
| Gross Vehicle Weight Rating | 28,000 lb (12 700 kg) |
| Wheelbase | 184 in (650 cm) on 437B, 207 in (526 cm) on 446B, 456B |
| Cab to Axle/trunnion (CA/CT) | 120 in (305 cm) on 437B, 138 in (351 cm) on 446B, 456B |
| Frame Section Modulus (SM) under crane w/110,000 PSI (758 MPa) | 10.0 in ³ (164 cm ³) |
| Frame Section Modulus (SM) over rear stabilizers: 110,000 PSI (758 MPa) | 10.0 in ³ (164 cm ³) |
| Stability Weight, Front | 4,800 lb (2177 kg) minimum, 5,200 lb (2359 kg) maximum* |
| Stability Weight, Rear | 4,600 lb (2087 kg) minimum* |
| Estimated Average Final Weight | 21,400 lb (9707 kg)** |

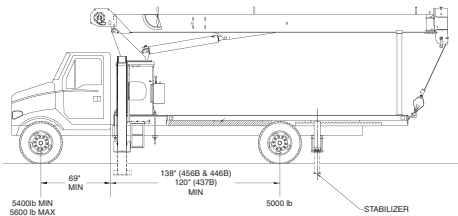
Requires front stabilizer for full capacity 360° around the truck. Requires front and rear stabilizers and standard subbase. Front stabilizer for this configuration requires 13.5 inch³ (50,000 PSI), or 6.2 inch³ (110,000 PSI) section modulus from back of the front spring hangers through front suspension and to the front stabilizer. Normally a tapered front frame cannot be reinforced to these minimums.



Configuration 3 with Subbase and Counterweight

| | |
|---|---|
| Working area | 360° |
| Gross Axle Weight Rating Front | 9,000 lb (4082 kg) |
| Gross Axle Weight Rating Rear | 19,000 lb (8618 kg) |
| Gross Vehicle Weight Rating | 28,000 lb (12 700 kg) |
| Wheelbase | 184 in (650 cm) on 437B, 207 in (526 cm) on 446B, 456B |
| Cab to Axle/trunnion (CA/CT) | 120 in (305 cm) on 437B, 138 in (351 cm) on 446B, 456B |
| Frame Section Modulus (SM) under crane w/110,000 PSI (758 MPa) | 10.0 in ³ (164 cm ³) |
| Frame Section Modulus (SM) over rear stabilizers: 110,000 PSI (758 MPa) | 10.0 in ³ (164 cm ³) |
| Stability Weight, Front | 4,800 lb (2177 kg) minimum, 5,600 lb (2540 kg) maximum* |
| Stability Weight, Rear | 6,100 lb (2767 kg) minimum* |
| Estimated Average Final Weight | 22,500 lb (10 206 kg)** |

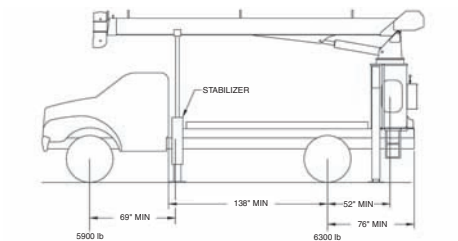
Allows 360° stability at full capacity without front stabilizer. Requires additional weight at rear of the truck to reduce loading on the front axle when lifting over the front. This mount is recommended only for occasional lifting over the front of the vehicle. If continually lifting over the front, the vehicle must be equipped with front stabilizer to eliminate fatigue on front axle components. Requires rear stabilizers and standard subbase with counterweight in subbase or underside of bed.



Configuration 4 without Subbase

| | |
|---|---|
| Working area | 180° |
| Gross Axle Weight Rating Front | 9,000 lb (4082 kg) |
| Gross Axle Weight Rating Rear | 19,000 lb (8618 kg) |
| Gross Vehicle Weight Rating | 28,000 lb (12 700 kg) |
| Wheelbase | 184 in (650 cm) on 437B, 207 in (526 cm) on 446B, 456B |
| Cab to Axle/trunnion (CA/CT) | 120 in (305 cm) on 437B, 138 in (351 cm) on 446B, 456B |
| Frame Section Modulus (SM) under crane w/110,000 PSI (758 MPa) | 15.0 in ³ (246 cm ³) |
| Frame Section Modulus (SM) over rear stabilizers: 110,000 PSI (758 MPa) | 10.0 in ³ (164 cm ³) |
| Stability Weight, Front | 5,400 lb (2445 kg) minimum, 5,600 lb (2540 kg) maximum* |
| Stability Weight, Rear | 5,000 lb (2268 kg) minimum* |
| Estimated Average Final Weight | 22,500 lb (10 206 kg)** |

The Series 400B can be mounted without the factory-furnished subbase provided the truck is above minimum specifications for truck frame strength and chassis weight. A 400B mounted in this manner will be 180° stable over the rear of the vehicle from outrigger to outrigger.



Configuration 5 - Rear Mount with HD Subbase

| | |
|---|---|
| Working area | 360° |
| Gross Axle Weight Rating Front | 9,000 lb (4082 kg) |
| Gross Axle Weight Rating Rear | 19,000 lb (8618 kg) |
| Gross Vehicle Weight Rating | 28,000 lb (12 700 kg) |
| Wheelbase | 207 in (526 cm) |
| Cab to Axle/trunnion (CA/CT) | 138 in (351 cm) |
| After Frame (AF) | 76 in (193 cm) minimum |
| Frame Section Modulus (SM) under crane w/110,000 PSI (758 MPa) | 13.0 in ³ (213 cm ³) |
| Frame Section Modulus (SM) over rear stabilizers: 110,000 PSI (758 MPa) | 13.0 in ³ (213 cm ³) |
| Stability Weight, Front | 5,900 lb (2676 kg) minimum* |
| Stability Weight, Rear | 6,800 lb (3084 kg) minimum* |
| Estimated Average Final Weight | 24,500 lb (11 113 kg)** |

The advantages of a rear-mounted Series 400B are: (1) it allows the operator to effectively use the close-in working area to lift heavier loads, and (2) 360° solid stability at full rated load. Counterweight up to 3,000 pounds will be required on a minimum truck. With this configuration, a payload of approximately 3,500 lbs (1588 kg) can be hauled on a minimum truck. Underframe stabilizers behind the cab may interfere with the drive line or cause ground clearance problems. If so, contact the factory for alternatives.

Notes:

- Gross Vehicle Weight rating (GVWR) is dependent on all components of the vehicle (axles, tires, springs, frame, etc.) meeting manufacturers' recommendations; always specify GVWR when purchasing trucks
- Diesel engines require a variable speed governor and energize-to-run fuel solenoid for smooth crane operation; electronic fuel injection requires EET engine remote throttle

- All mounting data is based on a National Series 400B with an 85 percent stability factor
- The complete unit must be installed in accordance with factory requirements, and a test performed to determine actual stability and counterweight requirements per SAE J765; contact the factory for details
- Transmission neutral safety interlock switch is required with optional remote control

*Estimated axle scale weights prior to installation of crane, stabilizers and subbase for 85% stability.

**Includes all standard crane components, 456B boom, rear bumper, boom rest and bed.

3

400B

specifications

Boom and Jib Combinations Data

Available in three basic models.

4

Model 437B – Equipped with a 15' 2"-37 ft (4.62-11.28 m) three-section boom. Maximum tip height is 47 ft (14.32 m).

15'2"-37 (4.62-11.28 m) three-section



Model 446B – Equipped with an 18' 2"-46 ft (5.54-14.02 m) three-section boom. This model can be equipped with an 18 ft (5.49 m) single section jib. Maximum tip height w/18 ft (5.49 m) jib is 74 ft (22.55 m).

18'2"-46 (5.54-14.02 m) three-section boom



18'2"-46 (5.54-14.02 m) three-section boom

4FJ18 18 ft (5.49 m) jib



Model 456B – Equipped with a 21' 6"-56 ft. (6.55-17.07 m) three-section boom. This model can be equipped with an 18 ft (5.49 m) single section jib. Maximum tip height w/18 ft (5.49 m) jib is 84 ft (25.60 m).

21'6"-56 ft (6.55-17.07 m) three-section boom.



21'6"-56 ft. (6.55-17.07 m) three-section boom





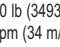
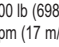
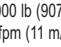
4FJ18 18 ft (5.49 m) jib



Note: Maximum tip is measured with outriggers/stabilizers fully extended.

400B Winch Data

- All winch pulls and speeds in this chart are shown on the third layer
- Winch line pulls would increase on the first and second layers
- Winch line speed would decrease on the first and second layers
- Winch line pulls may be limited by the winch capacity or the ANSI 5 to 1 cable safety factor
- Hook blocks are rated at maximum capacity for the block. **Do not exceed rated cable pull with any block.**

| Winch | Cable Supplied | Average Breaking Strength | 1 Part Line | 2 Part Line | 3 Part Line | 4 Part Line |
|------------------------------------|--|---------------------------|---|--|---|---|
| | | | Lift and Speed | Lift and Speed | Lift and Speed | Lift and Speed |
| Standard Planetary Winch | Standard 1/2" Diameter Rotation Resistant | 29,200 lb (13 250 kg) |  5,840 lb (2650 kg) 184 fpm (56 m/min) |  11,680 lb (5300 kg) 92 fpm (28 m/min) |  17,520 lb (7950 kg) 61 fpm (19 m/min) |  20,000 lb (9075 kg) 46 fpm (14 m/min) |
| Optional High-pull Planetary Winch | Standard 9/16" Diameter Rotation Resistant | 38,500 lb (17 463 kg) |  7,700 lb (3493 kg) 110 fpm (34 m/min) |  15,400 lb (6985 kg) 55 fpm (17 m/min) |  20,000 lb (9075 kg) 37 fpm (11 m/min) | N/A N/A |

| Winch | Bare Drum Pull | Std. Cable Limited |
|--------------------------|---------------------------|--------------------|
| Standard Planetary | 6,900 lb (3130 kg) | 5,840 lb (2650 kg) |
| Optional Planetary..... | 10,200 lb (4627 kg) | 7,700 lb (3493 kg) |

| Block Type | Rating | Weight |
|----------------------|------------------------|-----------------|
| Downhaul Weight..... | 4.2 ton (3.8 t) | 90 lb (68 kg) |
| 1 Sheave Block..... | 9 ton (8.16 t) | 100 lb (91 kg) |
| 2 Sheave Block..... | 22 ton (19.96 t) | 355 lb (161 kg) |

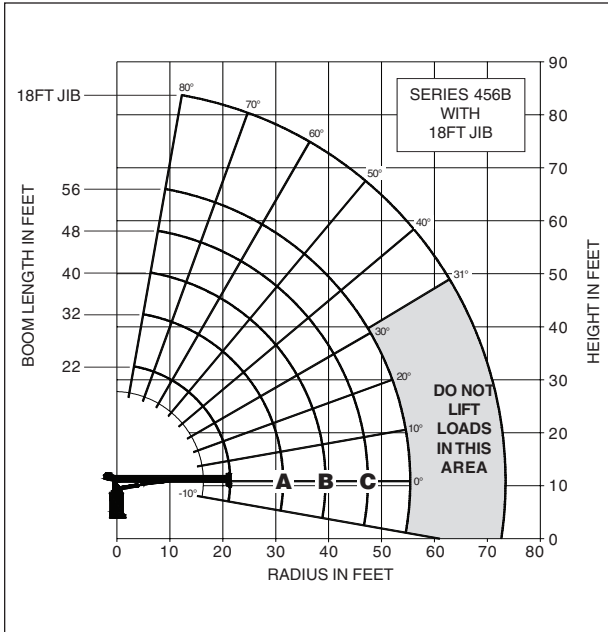
400B

capacities

5

Load Rating Chart: Series 456B with 18 ft. Jib

Other series 400B Load Rating Charts are available. National will send you a chart on request – or you may secure needed load rating information through your nearest National dealer.



CAUTION:

- Do not operate crane booms, jib extensions, any accessories or loads within 10 ft (3m) of live power lines or other conductors of electricity.
- Jib and boom capacities shown are maximum for each section.
- Do not exceed capacities at reduced radii.
- Load ratings shown on the load rating charts are maximum allowable loads with the outriggers properly extended on a firm, level surface and the crane leveled and mounted on a factory recommended truck.
- Always level the crane with the level indicator located on the crane.
- The operator must reduce load to allow for factors such as wind, ground conditions, operating speeds and their effects on freely suspended loads.
- Overloading this crane may cause structural collapse or instability.
- Weights on any accessories attached to the boom or loadline must be deducted from the load chart capacities.
- Do not exceed jib capabilities at any reduced boom lengths.
- Do not deadhead lineblock against boom tip when extending boom or winching up.
- Keep at least three wraps of loadline on drum at all times.
- Use only specified cable with this machine.

**SERIES 456B
WITH
18 FT JIB**

NOTE:

1. Operate with jib by radius when main boom is fully extended. If necessary increase boom angle to maintain loaded radius.
2. Operate with jib by boom angle when main boom is not fully extended. Do not exceed rated jib capacities at any reduced boom lengths.

| LOADLINE EQUIPMENT DEDUCT (lb) | |
|--------------------------------|-----|
| Downhaul weight | 90 |
| One sheave block | 185 |
| Two sheave block | 355 |

| Load Rating: Series 456B with 18 ft. Jib | | | | | | | | | | | | | |
|--|-------------------|----------------|-------------------|------------------|-------------------|------------------|-------------------|------------------|-------------------|----------------|--------------------|-------------------|---------------|
| LOAD RADIUS (FEET) | LOADED BOOM ANGLE | 22FT BOOM (lb) | LOADED BOOM ANGLE | A 32FT BOOM (lb) | LOADED BOOM ANGLE | B 40FT BOOM (lb) | LOADED BOOM ANGLE | C 48FT BOOM (lb) | LOADED BOOM ANGLE | 56FT BOOM (lb) | LOAD RADIUS (FEET) | LOADED BOOM ANGLE | 18FT JIB (lb) |
| 5 | 77.5 | 20,000 | | | | | | | | | | | |
| 6 | 74.5 | 17,300 | | | | | | | | | | | |
| 8 | 70 | 12,800 | 76.5 | 10,950 | 79.5 | 10,400 | | | | | | | |
| 10 | 63 | 10,000 | 73 | 8,850 | 77 | 8,650 | | | | | | | |
| 12 | 56.5 | 8,800 | 69 | 7,650 | 74 | 7,250 | 76.5 | 7,150 | | | | | |
| 14 | 50 | 7,800 | 65 | 6,850 | 70.5 | 6,350 | 75 | 6,150 | 77 | 5,900 | 14 | 80 | 2,800 |
| 16 | 42.5 | 6,900 | 61 | 6,050 | 68.5 | 5,650 | 72.5 | 5,400 | 75.5 | 5,150 | 16 | 78.5 | 2,700 |
| 18 | 34 | 6,100 | 57.5 | 5,450 | 65 | 5,150 | 69.5 | 4,900 | 73.5 | 4,600 | 18 | 77 | 2,500 |
| 20 | 23 | 5,400 | 53 | 5,050 | 62 | 4,750 | 67.5 | 4,600 | 71 | 4,200 | 20 | 75.5 | 2,300 |
| 25 | | | 40.5 | 4,050 | 53.5 | 3,850 | 61 | 3,700 | 65.5 | 3,400 | 25 | 72 | 2,050 |
| 30 | | | 22.5 | 3,200 | 43.5 | 3,150 | 53.5 | 3,000 | 60 | 2,800 | 30 | 68 | 1,750 |
| 35 | | | | | 31 | 2,600 | 45.5 | 2,600 | 53.5 | 2,400 | 35 | 63.5 | 1,500 |
| 40 | | | | | | | 36 | 2,100 | 46.5 | 2,000 | 40 | 59 | 1,300 |
| 45 | | | | | | | 22.5 | 1,750 | 39 | 1,650 | 45 | 54.5 | 1,100 |
| 50 | | | | | | | | | 29 | 1,400 | 50 | 49.5 | 1,000 |
| 55 | | | | | | | | | 13 | 1,050 | 55 | 44 | 850 |
| 60 | | | | | | | | | | | 60 | 38 | 750 |
| 65 | | | | | | | | | | | 65 | 31 | 650 |
| | 0 | 4,050 | 0 | 2,350 | 0 | 1,650 | 0 | 1,250 | 0 | 850 | | | |

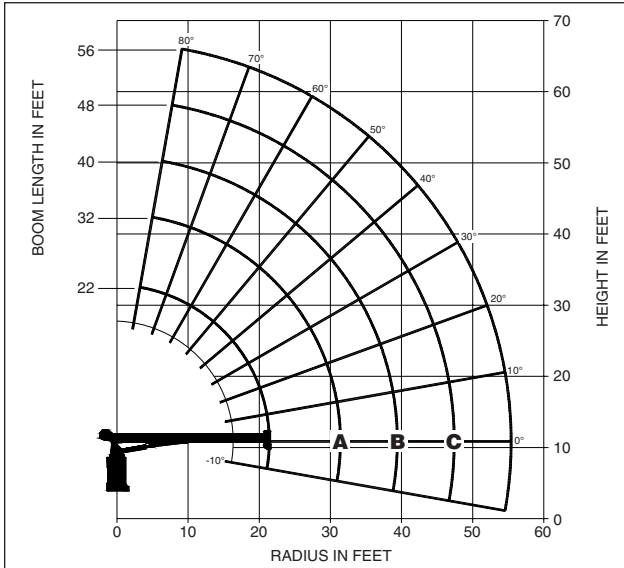
THIS CHART IS ONLY A GUIDE AND SHOULD NOT BE USED TO OPERATE THE CRANE. The individual crane's load chart, operating instructions and other instructional plates must be read and understood prior to operating the crane.

capacities

Load Rating Chart: Series 456B with No Jib

6

Other series 400B Load Rating Charts are available. National will send you a chart on request – or you may secure needed load rating information through your nearest National dealer.



**SERIES 456B
WITH
NO JIB**

LOADLINE EQUIPMENT DEDUCT (lb)

Downhaul weight _____ 90
One sheave block _____ 185
Two sheave block _____ 355

CAUTION:

- Do not operate crane booms, jib extensions, any accessories or loads within 10 ft (3m) of live power lines or other conductors of electricity.
- Jib and boom capacities shown are maximum for each section.
- Do not exceed capacities at reduced radii.
- Load ratings shown on the load rating charts are maximum allowable loads with the outriggers properly extended on a firm, level surface and the crane leveled and mounted on a factory recommended truck.
- Always level the crane with the level indicator located on the crane.
- The operator must reduce load to allow for factors such as wind, ground conditions, operating speeds and their effects on freely suspended loads.
- Overloading this crane may cause structural collapse or instability.
- Weights on any accessories attached to the boom or loadline must be deducted from the load chart capacities.
- Do not exceed jib capabilities at any reduced boom lengths.
- Do not deadhead lineblock against boom tip when extending boom or winching up.
- Keep at least three wraps of loadline on drum at all times.
- Use only specified cable with this machine.

Load Rating Chart: Series 456B with No Jib

| LOAD RADIUS (FEET) | LOADED BOOM ANGLE | 22FT BOOM (lb) | LOADED BOOM ANGLE | A 32FT BOOM (lb) | LOADED BOOM ANGLE | B 40FT BOOM (lb) | LOADED BOOM ANGLE | C 48FT BOOM (lb) | LOADED BOOM ANGLE | 56FT BOOM (lb) | |
|--------------------|-------------------|----------------|-------------------|------------------|-------------------|------------------|-------------------|------------------|-------------------|----------------|-------|
| 5 | 77.5 | 20,000 | | | | | | | | | |
| 6 | 74.5 | 17,500 | | | | | | | | | |
| 8 | 70 | 13,000 | 76.5 | 11,100 | 79.5 | 10,550 | | | | | |
| 10 | 63 | 10,200 | 73 | 9,000 | 77 | 8,800 | | | | | |
| 12 | 56.5 | 9,000 | 69 | 7,800 | 74 | 7,400 | 76.5 | 7,250 | | | |
| 14 | 50 | 8,000 | 65 | 7,000 | 70.5 | 6,500 | 75 | 6,250 | 77 | 6,000 | |
| 16 | 42.5 | 7,100 | 61 | 6,200 | 68.5 | 5,800 | 72.5 | 5,500 | 75.5 | 5,250 | |
| 18 | 34 | 6,300 | 57.5 | 5,600 | 65 | 5,300 | 69.5 | 5,000 | 73.5 | 4,700 | |
| 20 | 23 | 5,600 | 53 | 5,200 | 62 | 4,900 | 67.5 | 4,700 | 71 | 4,300 | |
| 25 | | | 40.5 | 4,200 | 53.5 | 4,000 | 61 | 3,800 | 65.5 | 3,500 | |
| 30 | | | 22.5 | 3,350 | 43.5 | 3,300 | 53.5 | 3,100 | 60 | 2,900 | |
| 35 | | | | | | 31 | 2,750 | 45.5 | 2,700 | 53.5 | 2,500 |
| 40 | | | | | | | | 36 | 2,200 | 46.5 | 2,100 |
| 45 | | | | | | | | 22.5 | 1,850 | 39 | 1,750 |
| 50 | | | | | | | | | | 29 | 1,500 |
| 55 | | | | | | | | | | 13 | 1,150 |
| | 0 | 4,250 | 0 | 2,500 | 0 | 1,800 | 0 | 1,350 | 0 | 950 | |

THIS CHART IS ONLY A GUIDE AND SHOULD NOT BE USED TO OPERATE THE CRANE. The individual crane's load chart, operating instructions and other instructional plates must be read and understood prior to operating the crane.

400B

Radio Remote Controls –

Eliminate the handling and maintenance concerns that accompany cabled remotes. Operate to a range of about 250 feet (76 m), varying with conditions.

- **Model R4BR**

One-Person Basket –

Strong but lightweight steel basket with 300-lb (139-kg) capacity, gravity hung with swing lock and full body harness.

- **Model B1-S**
- **Model 2B1-S** (for dual locking baskets)

Hi-Pull Planetary Winch with Rotation-Resistant Wire Rope –

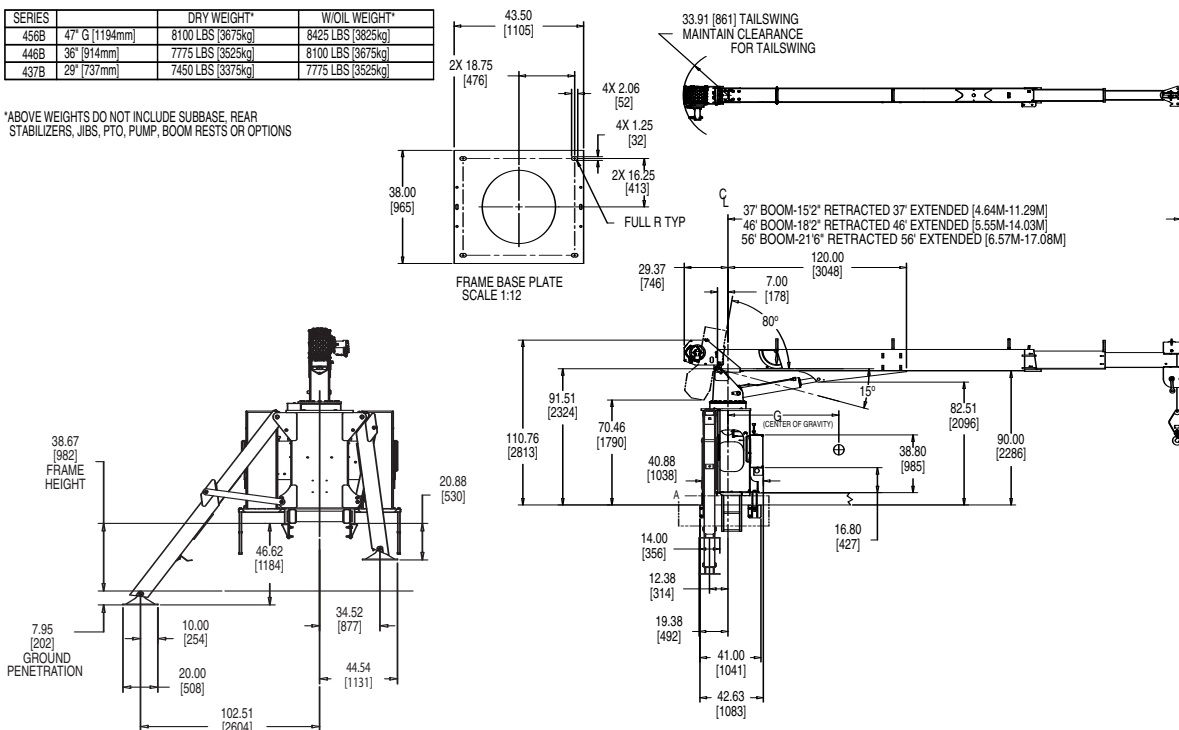
- **Model HIP**

Rear mount and tractor mount configurations available.

Dimensions Specifications

| SERIES | | DRY WEIGHT* | W/OIL WEIGHT* |
|--------|----------------|-------------------|-------------------|
| 456B | 47" G [1194mm] | 8100 LBS [3675kg] | 8425 LBS [3825kg] |
| 446B | 36" [914mm] | 7775 LBS [3525kg] | 8100 LBS [3675kg] |
| 437B | 29" [737mm] | 7450 LBS [3375kg] | 7775 LBS [3525kg] |

*ABOVE WEIGHTS DO NOT INCLUDE SUBBASE, REAR STABILIZERS, JIBS, PTO, PUMP, BOOM RESTS OR OPTIONS



400B



Manitowoc Crane Group - Americas

Manitowoc, Wisconsin Facility
Tel: [Int + 001] 920 684 6621
Fax: [Int + 001] 920 683 6277
Shady Grove, Pennsylvania Facility
Tel: [Int + 001] 717 597 8121
Fax: [Int + 001] 717 597 4062

Manitowoc Crane Group - EMEA

Europe Middle East & Africa
Tel: [Int + 33] (0) 472 18 20 20
Fax: [Int + 33] (0) 472 18 20 00

Manitowoc Crane Group - UK

Europe Middle East & Africa
Tel: [Int + 44] (0) 191 565 6281
Fax: [Int + 44] (0) 191 564 0442

Manitowoc Crane Group - Germany

(Sales, Parts & Service)
Tel: [Int + 49] (0) 2173 8909 0
Fax: [Int + 49] (0) 2173 8909-30

Manitowoc Crane Group - France

France & Africa (Sales, Parts & Service)
Tel: [Int + 33] (0) 1 303 13150
Fax: [Int + 33] (0) 1 303 86085

Manitowoc Crane Group - Netherlands

(Sales, Parts & Service)
Tel: [Int + 31] (0) 76 578 39 99
Fax: [Int + 31] (0) 76 578 39 78

Manitowoc Crane Group - Italy

Italy & Southern Europe (Sales, Parts & Service)
Tel: [Int + 39] (0) 331 49 33 11
Fax: [Int + 39] (0) 331 49 33 30

Manitowoc Crane Group - Portugal

Portugal & Spain (Sales, Parts & Service)
Tel: [Int + 351] (0) 22 968 08 89
Fax: [Int + 351] (0) 22 968 08 97

Manitowoc Crane Group - Singapore

Asia/Pacific excl China (Sales, Parts & Service)
Tel: [Int + 65] 6861 1733
Fax: [Int + 65] 6862 4040 / 4142

Manitowoc Crane Group - Shanghai

China (Sales, Parts & Service)
Tel: [Int + 86] (0) 21 64955555
Fax: [Int + 86] (0) 2164852038

Manitowoc Crane Group - Beijing

China (Sales, Parts & Service)
Tel: [Int + 86] (0) 10 646 71690
Fax: [Int + 86] (0) 10 646 71691

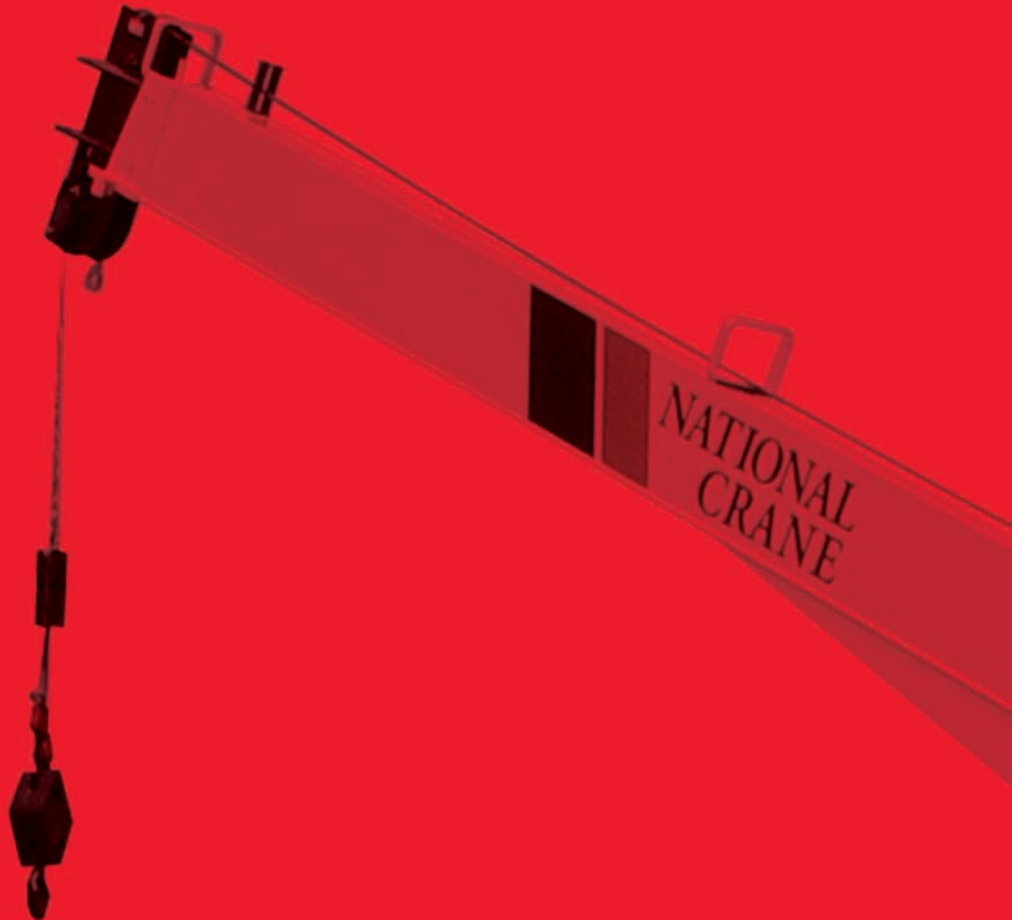
Manitowoc Crane Group - Middle East

Sales
Tel: [Int + 971] (0) 4 348 4478
Fax: [Int + 971] (0) 4 348 4478
(Parts & Service)
Tel: [Int + 973] (0) 9 660 899
Fax: [Int + 973] (0) 2 707 740

Distributed By:



www.manitowoccrane.com



Constant improvement and engineering progress make it necessary that we reserve the right to make specification, equipment, and price changes without notice. *Illustrations/photos shown may include optional equipment and accessories, and may not include all standard equipment.