

Preliminary

Hydraulic Crawler Crane

CK

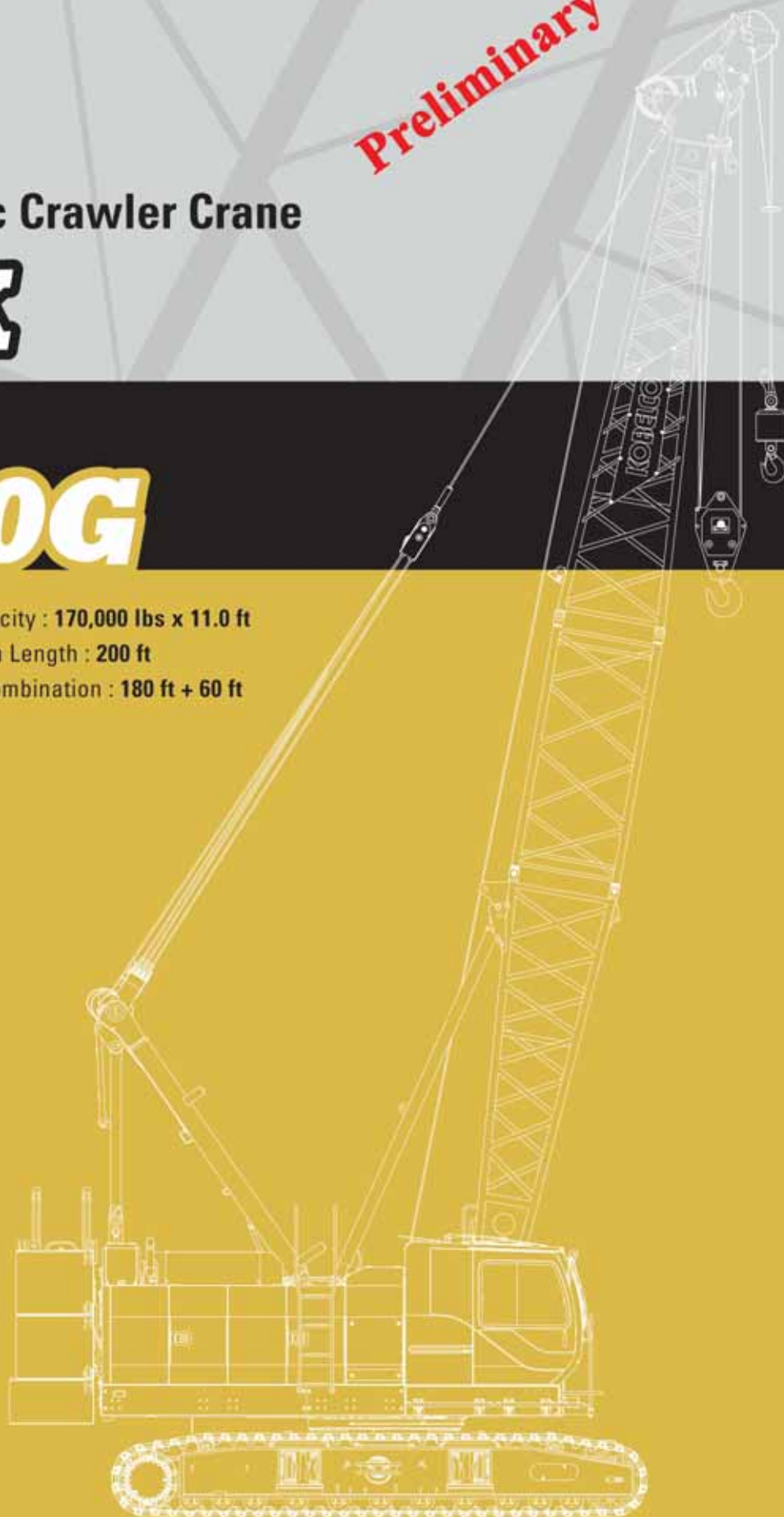
850G

Model : CK850G

Max. Lifting Capacity : 170,000 lbs x 11.0 ft

Max. Crane Boom Length : 200 ft

Max. Fixed Jib Combination : 180 ft + 60 ft



KOBELCO



CK850G

CONTENTS

3

SPECIFICATIONS

5

GENERAL DIMENSIONS

6

BOOM AND JIB ARRANGEMENTS

7

WORKING RANGES

10

SUPPLEMENTAL DATA

11

LIFTING CAPACITY

19

TRANSPORTATION PLAN

21

PARTS AND ATTACHMENTS

SPECIFICATIONS



Power Plant

Model: HINO J08E-UV

Type: 4 cycle, water-cooled, vertical in-line 6, direct injection, turbo-charger, intercooler

Complies with US EPA Tier Interim Tier IV and NRMM (Europe) Stage IIIB

Displacement: 469 cu in (7.684 liters)

Rated Power: 285 HP/2,100 rpm (213 kW/2,100 min⁻¹)

Max. torque: 750 lbf-ft /1,600 rpm (1,017 N-m/1,600 min⁻¹)

Cooling system: Water-cooled

Starter: 24V-5kW

Radiator: Corrugated type core, thermostatically controlled

Air cleaner: Dry type with replaceable paper element

Throttle: Twist grip type hand throttle, electrically actuated

Fuel filter: Replaceable paper element

Batteries: Two 12V x 136 Ah/5HR capacity batteries, series connected

Fuel tank capacity: 106 US gal. (400 liters)



Hydraulic System

Main pumps: 3 variable displacement piston pumps

Control: Full-flow hydraulic control system for infinitely variable pressure to all winches, propel and swing. Controls respond instantly to the touch, delivering smooth function operation.

Cooling: Oil-to-air heat exchanger (plate-fin type)

Filtration: Full-flow and bypass type with replaceable element

Electrical system: All wiring corded for easy servicing, individual fused branch circuits.

Max. relief valve pressure:

Load hoist, boom hoist and propel system:

4,626 psi (31.9 MPa)

Swing system: 3,989 psi (27.5 MPa)

Control system: 783 psi (5.4 MPa)

Hydraulic tank capacity: 116.2 US gal. (440 liters)



Boom Hoisting System

Powered by a hydraulic motor through a planetary reducer.

Brake: A spring-set, hydraulically released multiple-disc brake is mounted on the boom hoist motor and operated through a counter-balance valve.

Drum lock: External ratchet for locking drum

Drum: Single drum, grooved for 5/8 inch dia. wire rope

Line speed: Single line on first drum layer

Hoisting/Lowering: 230 to 6.6 ft/min

Diameter of wire rope

Main winch: 7/8 in. x 869 ft. (22 mm x 220 m)

Aux. winch: 7/8 in. x 673 ft. (22 mm x 130 m)

Third winch: 7/8 in. x 476 ft. (22 mm x 145 m)

Boom hoisting/lowering: 5/8 in. x 492 ft (16 mm x 150 m)

Boom guy line: 1-3/16 in. (30 mm)

Boom backstops: Required for all boom length



Load Hoist System

Front and rear drums for load hoist powered by a hydraulic variable plunger motors, driven through planetary reducers.

Negative brake: A spring-set, hydraulically released multiple-disc brake is mounted on the hoist motor and operated through a counter-balance valve. (Positive free fall brake is optional)

Drum lock: External ratchet for locking drum

Drums:

Front drums:

1ft 9-21/32 inch (550 mm) P.C.D x 1ft 9-15/32 inch (545 m)

Lg., grooved for 7/8 inch (22 mm) wire rope. Rope capacity is 869ft (265 m) working length and 1,099ft (335 m) storage length.

Rear drums:

1ft 9-21/32 inch (550 mm) P.C.D x 1ft 9-15/32 inch (545 m)

Lg., grooved for 7/8 inch(22 mm) wire rope. Rope capacity is 673 ft (205 m) working length and 1,099ft (335m) storage length.

Line speed: Single line on the first layer

Hoisting/Lowering: 394 to 10 ft

Line pull:

Max. line pull (Single line): 34,400 lbs (153 kN)

Rated line pull: 17,000 lbs (78.5 kN)



Swing System

Swing unit is powered by hydraulic motor driving spur gears through planetary reducers (2 set), the swing system provides 360° rotation.

Swing parking brakes: A spring-set, hydraulically released multiple-disc brake is mounted on swing motor.

Swing circle: Single-row ball bearing with an integral internally cut swing gear.

Swing lock: Manually, four position lock for transportation

Swing speed: 4.0 rpm (min⁻¹)



Upper Structure

Torsion-free precision machined upper frame. All components are located clearly and service friendly. Engine will with low noise level.

Counter weight: 57,800 lbs



Cab & Control

Totally enclosed, full vision cab with safety glass, fully adjustable, high backed seat with a headrest and armrests, and intermittent wiper and window washer (skylight and front window).

Cab fittings:

Air conditioner, convenient compartment (for tool), cup holder, ashtray, cigarette lighter, sun visor, roof blind, tinted glass, floor mat, footrest, shoe tray, and foot acceleration pedal.

Controls:

Four adjustable levers for front drum, rear drum, boom drum and swing controls.

**Lower Structure**

Steel-welded carbody with axles. Crawler assemblies are designed with quick disconnect feature for individual removal as a unit from axles. Crawler belt tension is maintained by hydraulic jack force on the track adjusting bearing block.

Carbodyweight: 14,300 lbs

Crawler drive: Independent hydraulic propel drive is built into each crawler side frame. Each drive consists of a hydraulic motor propelling a driving tumbler through a planetary gear box. Hydraulic motor and gear box are built into the crawler side frame within the shoe width.

Crawler brakes: Spring-set, hydraulically released parking brakes are built into each propel drive.

Steering mechanism: A hydraulic propel system provides both skid steering (driving one track only) and counter-rotating steering (driving each track in opposite directions).

Track rollers: Sealed track rollers for maintenance-free operation.

Shoe (flat): 3 ft wide each crawler

Max. travel speed: 1.07/0.71 mph (1.73/1.15 km/h)

Max. gradeability: 40%

**Weight**

Including upper and lower machine, 57,800 lbs counterweight and 14,300 lbs carbody weight, basic boom (or basic boom + basic jib), hook, and other accessories.

Weight: 165,600 lbs (75.1 t)

Ground pressure: 10.8 psi (84.7 kPa)

**Attachment****Boom and Jib:**

Welded lattice construction using tubular, high-tensile steel chords with pin connections between sections.

Boom and Jib Length

	Min. Length (Min. Combination)	Max. Length (Max. Combination)
Crane Boom	40 ft	200 ft
Fixed Jib	80 ft + 30 ft	180 ft + 60 ft

Main Specifications (Model: CK850G)

Crane Boom	
Max. Lifting Capacity	170,000 lbs
Length	40 ~ 200 ft
Fixed Jib	
Max. Lifting Capacity	24,000 lbs
Max. Length	60 ft
Max. Combination	180 ft + 60 ft
Power Plant	
Model	HINO J08E-UV
Engine Output	285 HP/2,100 rpm
Fuel Tank Capacity	106 US gal. (400 liters)
Main & Aux. Winch	
Max. Line Speed	390 ft/min (120 m/min): 1st layer
Rated Line Pull (single Line)	17,000 lbs (78.5 kN)
Wire Rope Diameter	7/8 in (22 mm)
Brake Type	Spring set hydraulically released (Negative)

Working Speed

Swing Speed	4.0 rpm (min ⁻¹)
Travel Speed	1.07/0.71 mph

Hydraulic System

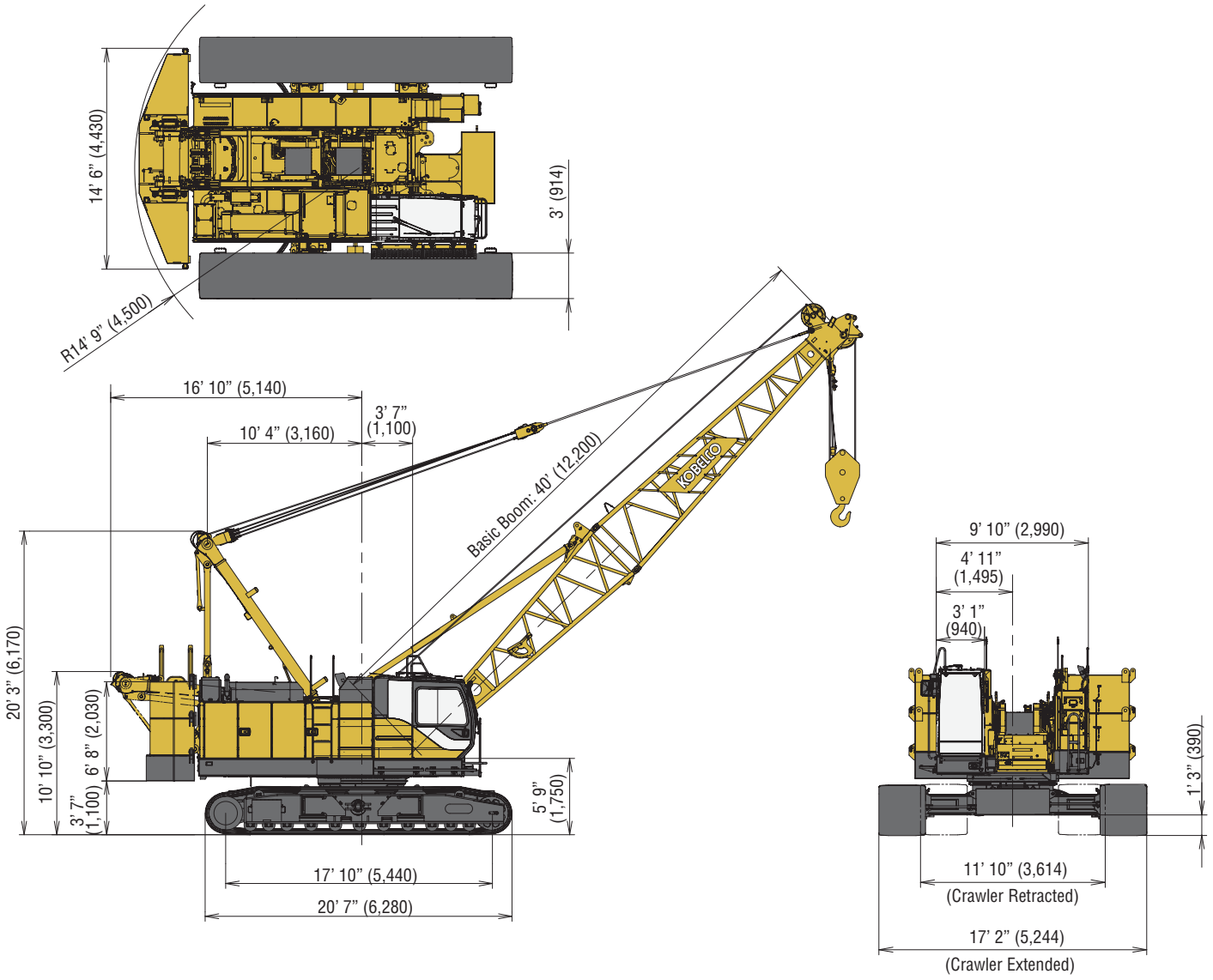
Main pumps	3 variable displacement
Max. Pressure	4,626 psi (31.9 MPa)
Hydraulic Tank Capacity	116.2 US gal. (440 liters)

Weight

Operating Weight	165,600 lbs (75.1 t)
Ground Pressure	10.8 psi (84.7 kPa)
Counterweight	57,800 lbs
Transport Weight	91,677 lbs

GENERAL DIMENSIONS

Unit: ft-in (mm)



BOOM AND JIB ARRANGEMENTS

Crane Boom Arrangements

Boom length ft (m)	Boom arrangement
40 (12.2)	
50 (15.2)	
60 (18.3)	※
70 (21.3)	※
80 (24.4)	※
90 (27.4)	※
100 (30.5)	※
110 (33.5)	※
120 (36.6)	※
130 (39.6)	※
140 (42.7)	※

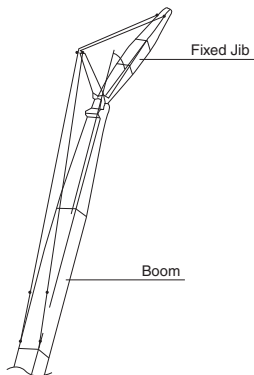
Boom length ft (m)	Boom arrangement
150 (45.7)	※
160 (48.8)	※
170 (51.8)	※
180 (54.9)	※
190 (57.9)	※
200 (61.0)	※

Symbol	Boom Length	Remarks
	20.0 ft (6.1 m)	Boom Base
	20.0 ft (6.1 m)	Boom Top
	10.0 ft (3.1 m)	Insert Boom
	20.0 ft (6.1 m)	Insert Boom
	40.0 ft (12.2 m)	Insert Boom
	40.0 ft (12.2 m)	Insert Boom with lug

↗ mark shows the guy line installing position when the fixed jib is used.

※ indicates the most flexible combination of insert luffing booms, which can be modified to form all shorter luffing boom arrangements.

Fixed Jib Arrangements

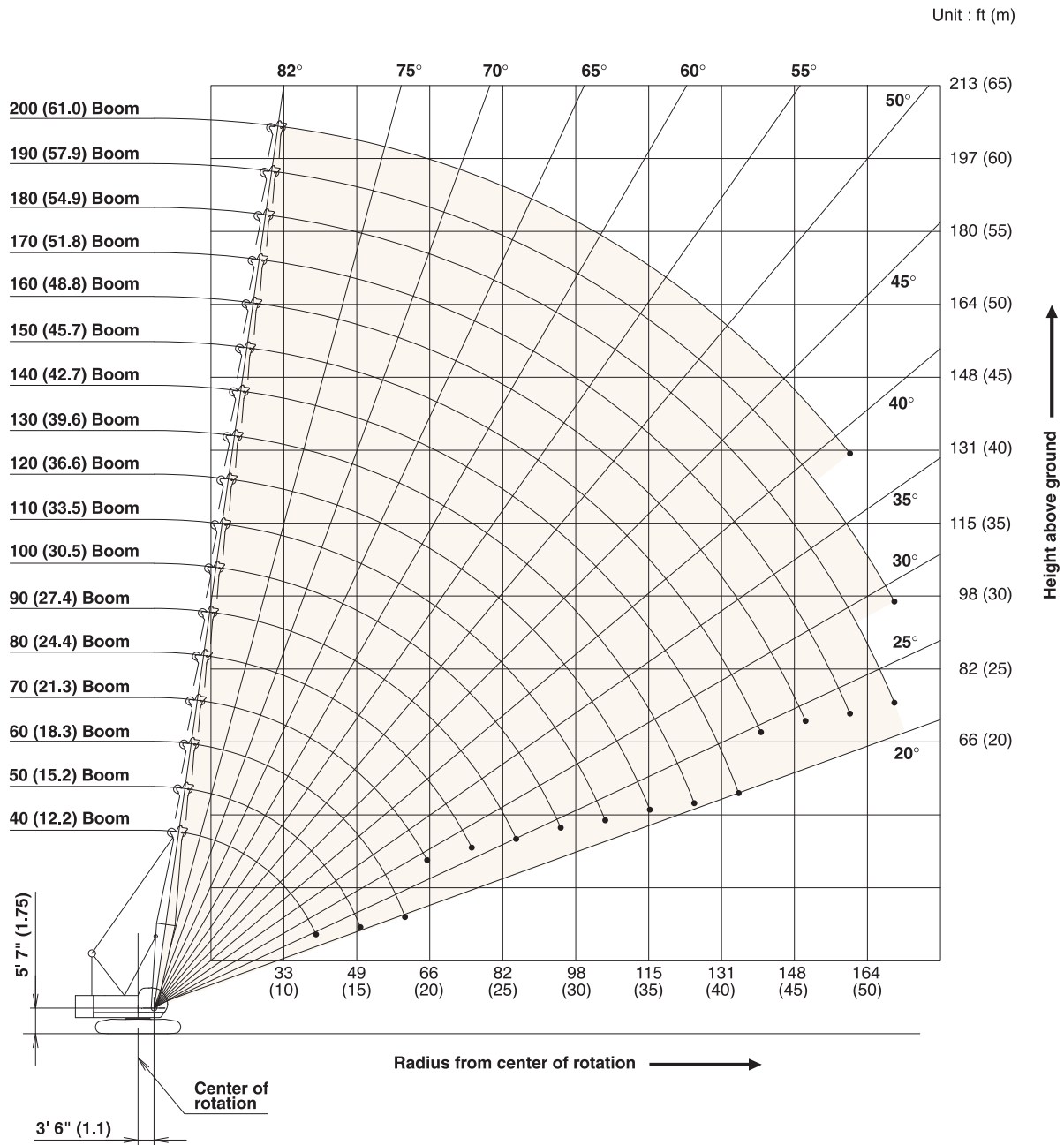


Crane boom length	Jib length ft (m)	Jib arrangement
80 ft (24.4 m) } 180 ft (54.9 m)	30 (9.1)	
	40 (12.2)	
	50 (15.2)	
	60 (18.3)	

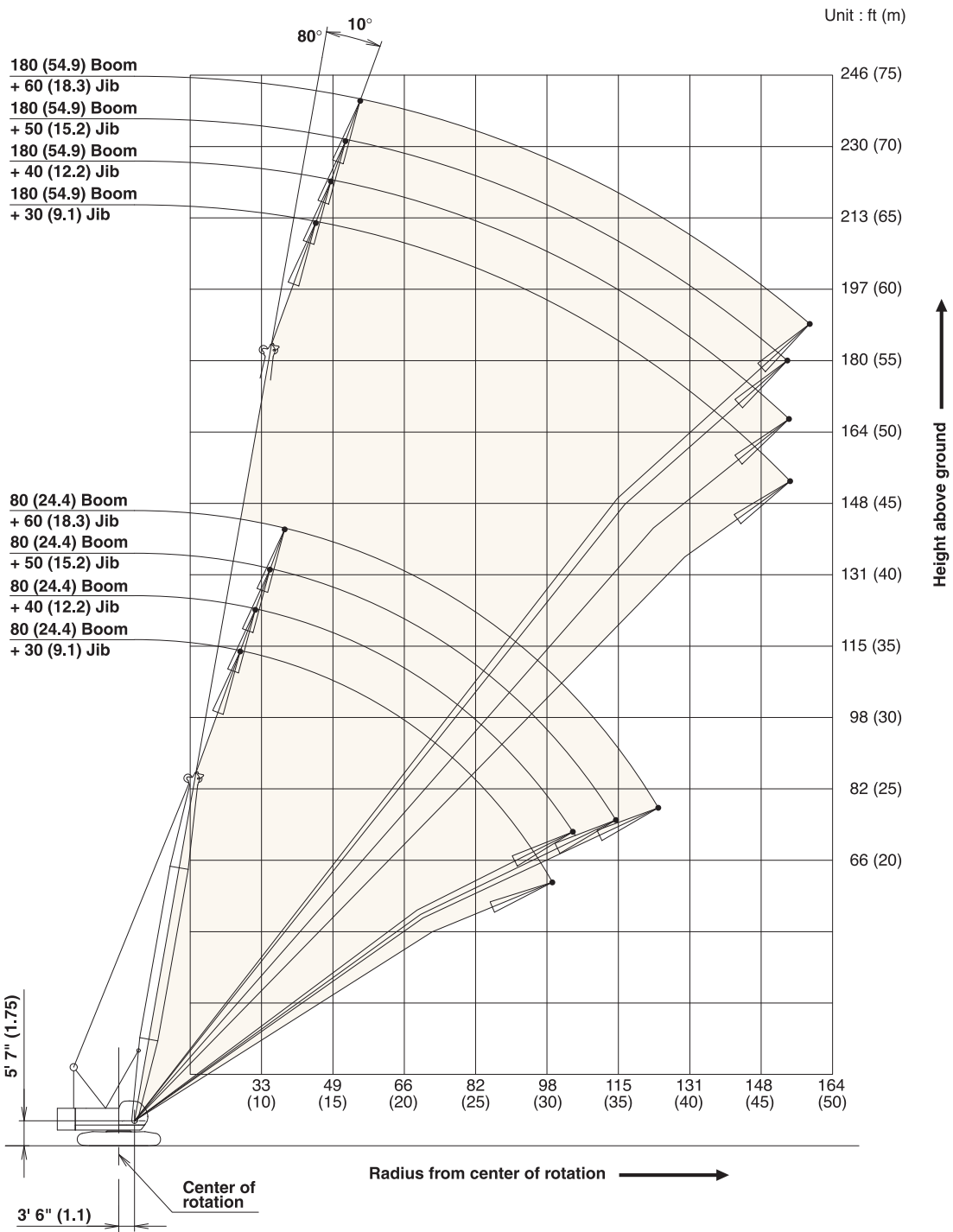
Symbol	Jib Length	Remarks
	15 ft (4.6 m)	Jib Base
	15 ft (4.6 m)	Jib Top
	10 ft (3.0 m)	Insert Jib
	20 ft (6.1 m)	Insert Jib

WORKING RANGES

Main Boom

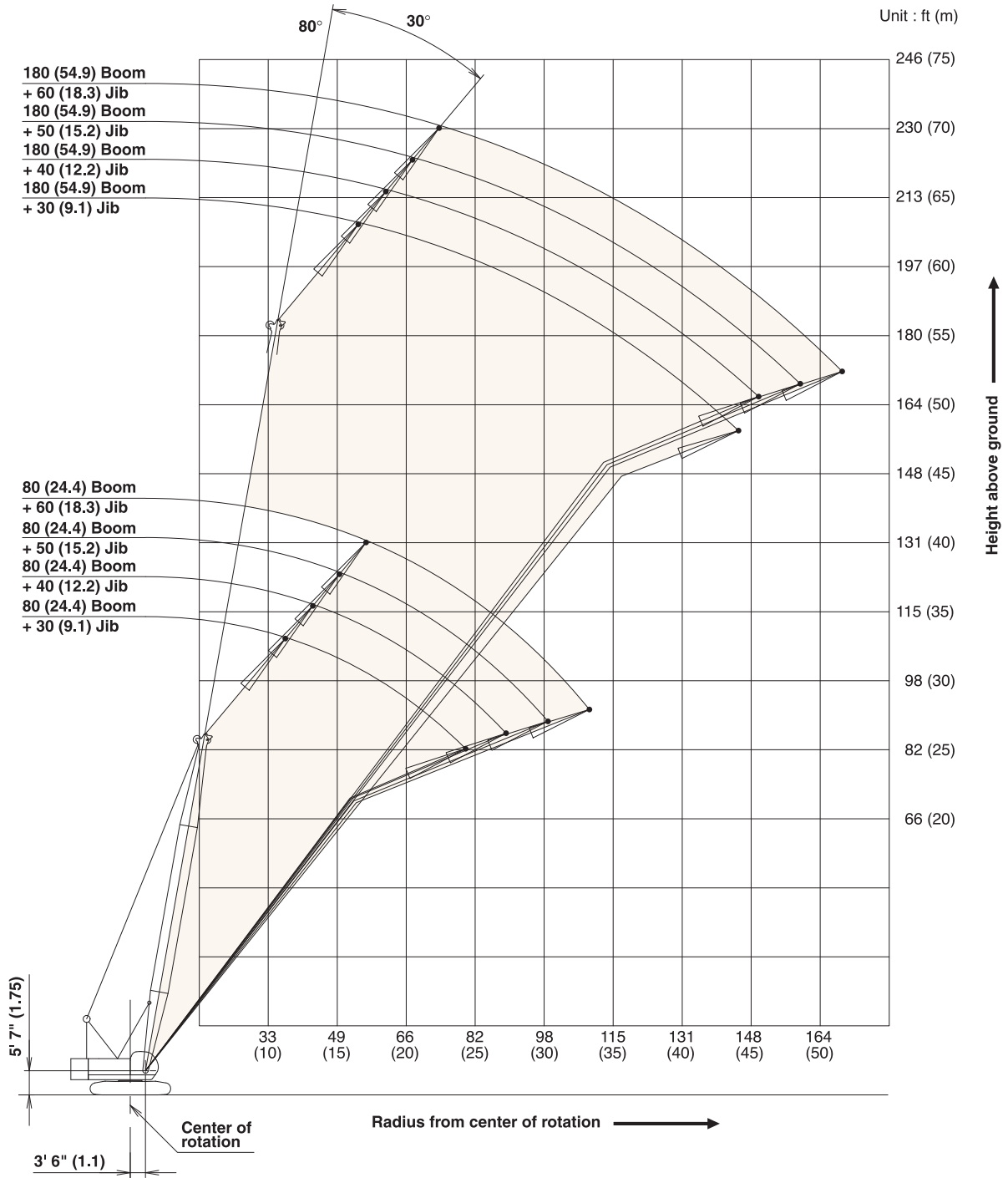


Fixed Jib 10°



WORKING RANGES

Fixed Jib 30°



SUPPLEMENTAL DATA

- Rated loads included in the charts are the maximum allowable freely suspended loads at a given boom length, boom angle and load radius, and have been determined for the machine standing level on firm supporting surface under ideal operating conditions. The user must limit or de-rate rated loads to allow for adverse conditions (such as soft or uneven ground, out-of-level conditions, wind, side loads, pendulum action, jerking or sudden stopping of loads, inexperience of personnel, multiple machine lifts, and traveling with a load).
- Rated loads do not exceed 75% of minimum tipping loads. Rated loads based on factors other than machine stability as structural competence are shown by asterisk * in the charts.
- The machine must be reeved and set-up as stated in the operation manual and all the instruction manuals if these manuals are missing, obtain replacements.
 - Boom backstops are required for all boom lengths.
 - Gantry must be fully raised position for all operations.
 - Crawlers must be fully extended and be locked in position.
 - The crane must be leveled to within 1% on a firm supporting surface.
- Do not attempt to lift where no ratings are shown as crane may tip or collapse.
- Attempting to lift more than rated loads may cause machine to tip or collapse. Do not tip machine to determine rated loads.
- Weight of hooks, hook blocks, slings and other lifting devices are a part of the total load. Their total weight must be subtracted from the rated load to obtain the weight that can be lifted.
- When lifting over boom point with jib or auxiliary sheave, rated loads for the boom must be deducted as shown below.

Jib length	Aux.	30'	40'	50'	60'
Deduct (lbs)	320	2,400	3,200	4,200	5,200

- The total load that can be lifted over a jib is limited by rated jib loads.
- Boom lengths for jib mounting are 80 ft (24.4 m) to 180 ft (54.9 m).
- The total load that can be lifted over an auxiliary sheave is the value for 320 lbs deducted from rated load for the boom without auxiliary sheave, but it should not exceed 17,000 lbs.

- Boom lengths that can attach auxiliary sheave are from 40 ft (12.2 m) to 190 ft (57.9 m).
- The boom should be erected over the front of the crawlers, not laterally. When erecting and lowering the boom at length of 180 ft (54.9 m) with jib, the blocks for erection must be placed at the end of the crawlers.
- Least stable position is over the side.
- Maximum hoist load for number of reeving parts of line for hoist rope.

Main Boom Hoist Loads

No. of Parts of Line	1	2	3	4	5
Maximum Loads (lbs)	17,000	34,000	51,000	68,000	85,000

No. of Parts of Line	6	7	8	9	10
Maximum Loads (lbs)	102,000	119,000	136,000	153,000	170,000

Jib Hoist Loads

No. of Parts of Line	1	2
Maximum Loads (lbs)	17,000	24,000

Auxiliary Hoist Loads

No. of Parts of Line	1
Maximum Loads (lbs)	17,000

- Rated loads listed apply only to the machine as originally manufactured and designed by KOBELCO CRANES CO.,LTD. Modifications to this machine or use of equipment other than that specified can reduce operating capacity.
- Designed and rated to comply with ANSI Code B30.5.

Operation of this equipment in excess of rated loads or disregard of instruction voids the warranty.

LIFTING CAPACITY



Crane Boom Lifting Capacity

Unit: lbs

Counterweight: 57,800 lbs, Carbody weight: 14,300 lbs

40' Boom			50' Boom			60' Boom			70' Boom			80' Boom		
Load Radius (ft)	Boom Angle (deg.)	360° Rated Load (lbs)	Load Radius (ft)	Boom Angle (deg.)	360° Rated Load (lbs)	Load Radius (ft)	Boom Angle (deg.)	360° Rated Load (lbs)	Load Radius (ft)	Boom Angle (deg.)	360° Rated Load (lbs)	Load Radius (ft)	Boom Angle (deg.)	360° Rated Load (lbs)
10.0	81.7	170,000 *	12.0	81.1	166,400 *	13.0	81.6	154,200 *	14.0	82.0	143,600 *	16.0	81.6	126,300 *
11.0	80.3	170,000 *	13.0	79.9	154,400 *	14.0	80.7	143,800 *	15.0	81.2	134,500 *	17.0	80.8	119,100 *
12.0	78.8	166,600 *	14.0	78.8	144,000 *	15.0	79.7	134,700 *	16.0	80.3	126,500 *	18.0	80.1	112,600 *
13.0	77.4	154,600 *	15.0	77.6	134,900 *	16.0	78.7	126,700 *	17.0	79.5	119,300 *	19.0	79.4	105,290
14.0	75.9	144,200 *	16.0	76.4	126,900 *	17.0	77.7	119,500 *	18.0	78.7	112,800 *	20.0	78.6	96,930
15.0	74.4	135,100 *	17.0	75.2	119,700 *	18.0	76.8	113,000 *	19.0	77.8	105,400	22.0	77.2	83,550
16.0	72.9	127,100 *	18.0	74.0	113,200 *	19.0	75.8	105,460	20.0	77.0	97,060	24.0	75.7	73,320
17.0	71.4	119,900 *	19.0	72.8	105,660	20.0	74.8	97,130	22.0	75.3	83,700	26.0	74.2	65,230
18.0	69.9	113,400 *	20.0	71.6	97,350	22.0	72.8	83,790	24.0	73.6	73,470	28.0	72.7	58,680
19.0	68.3	105,820	22.0	69.2	84,010	24.0	70.8	73,560	26.0	71.9	65,380	30.0	71.2	53,260
20.0	66.7	97,500	24.0	66.7	73,810	26.0	68.7	65,490	28.0	70.1	58,840	32.0	69.7	48,690
22.0	63.6	84,190	26.0	64.2	65,760	28.0	66.6	58,970	30.0	68.4	53,430	34.0	68.1	44,840
24.0	60.3	74,000	28.0	61.6	59,230	30.0	64.5	53,570	32.0	66.6	48,890	36.0	66.6	41,490
26.0	56.9	65,980	30.0	58.9	53,850	32.0	62.4	49,030	34.0	64.8	45,030	38.0	65.0	38,580
28.0	53.4	59,480	32.0	56.2	49,310	34.0	60.2	45,170	36.0	63.0	41,680	40.0	63.4	36,020
30.0	49.7	54,100	34.0	53.3	45,480	36.0	58.0	41,840	38.0	61.1	38,800	45.0	59.3	30,820
32.0	45.7	49,580	36.0	50.4	42,150	38.0	55.7	38,950	40.0	59.2	36,240	50.0	55.0	26,820
34.0	41.5	45,740	38.0	47.3	39,280	40.0	53.3	36,410	45.0	54.3	31,040	55.0	50.5	23,670
36.0	36.9	42,460	40.0	44.1	36,750	45.0	47.0	31,230	50.0	49.0	27,070	60.0	45.6	21,140
38.0	31.6	39,590	45.0	34.9	31,590	50.0	40.0	27,290	55.0	43.3	23,960	65.0	40.3	19,060
40.0	25.5	34,830 *	50.0	22.7	26,890 *	55.0	31.7	24,200	60.0	36.9	21,450	70.0	34.4	17,350
						60.0	20.6	21,600 *	65.0	29.3	19,420	75.0	27.3	15,890
Reeves		10	Reeves		10	Reeves		10	Reeves		9	Reeves		8
90' Boom			100' Boom			110' Boom			120' Boom			130' Boom		
Load Radius (ft)	Boom Angle (deg.)	360° Rated Load (lbs)	Load Radius (ft)	Boom Angle (deg.)	360° Rated Load (lbs)	Load Radius (ft)	Boom Angle (deg.)	360° Rated Load (lbs)	Load Radius (ft)	Boom Angle (deg.)	360° Rated Load (lbs)	Load Radius (ft)	Boom Angle (deg.)	360° Rated Load (lbs)
17.0	81.9	118,820 *	19.0	81.5	101,850 *	20.0	81.8	92,590 *	22.0	81.5	80,680 *	24.0	81.3	71,200 *
18.0	81.2	112,400 *	20.0	80.9	96,800	22.0	80.7	83,260	24.0	80.5	72,950	26.0	80.4	64,610
19.0	80.6	105,220	22.0	79.8	83,400	24.0	79.7	73,010	26.0	79.6	64,810	28.0	79.5	58,020
20.0	79.9	96,870	24.0	78.6	73,120	26.0	78.6	64,900	28.0	78.6	58,240	30.0	78.6	52,570
22.0	78.6	83,480	26.0	77.4	65,010	28.0	77.5	58,330	30.0	77.6	52,800	32.0	77.7	48,010
24.0	77.3	73,230	28.0	76.3	58,440	30.0	76.5	52,880	32.0	76.6	48,230	34.0	76.8	44,110
26.0	76.0	65,140	30.0	75.1	53,020	32.0	75.4	48,320	34.0	75.6	44,330	36.0	75.9	40,760
28.0	74.7	58,570	32.0	73.9	48,450	34.0	74.3	44,440	36.0	74.7	40,980	38.0	74.9	37,830
30.0	73.4	53,150	34.0	72.7	44,550	36.0	73.2	41,090	38.0	73.7	38,050	40.0	74.0	35,250
32.0	72.0	48,580	36.0	71.5	41,200	38.0	72.1	38,160	40.0	72.7	35,470	45.0	71.7	30,000
34.0	70.7	44,700	38.0	70.3	38,290	40.0	71.0	35,600	45.0	70.1	30,220	50.0	69.4	25,970
36.0	69.3	41,380	40.0	69.0	35,730	45.0	68.2	30,350	50.0	67.6	26,210	55.0	67.0	22,790
38.0	68.0	38,440	45.0	65.9	30,480	50.0	65.4	26,340	55.0	65.0	23,010	60.0	64.6	20,210
40.0	66.6	35,890	50.0	62.7	26,470	55.0	62.5	23,170	60.0	62.3	20,450	65.0	62.1	18,070
45.0	63.0	30,660	55.0	59.5	23,320	60.0	59.5	20,610	65.0	59.5	18,320	70.0	59.6	16,290
50.0	59.4	26,670	60.0	56.1	20,740	65.0	56.4	18,490	70.0	56.7	16,530	75.0	57.0	14,770
55.0	55.6	23,520	65.0	52.5	18,620	70.0	53.2	16,710	75.0	53.8	15,010	80.0	54.3	13,470
60.0	51.6	20,960	70.0	48.8	16,860	75.0	49.9	15,210	80.0	50.8	13,710	85.0	51.5	12,320
65.0	47.4	18,870	75.0	44.8	15,360	80.0	46.4	13,910	85.0	47.6	12,580	90.0	48.6	11,330
70.0	42.9	17,100	80.0	40.6	14,080	85.0	42.6	12,800	90.0	44.3	11,590	95.0	45.6	10,440
75.0	37.9	15,630	85.0	35.9	12,980	90.0	38.6	11,830	95.0	40.7	10,730	100.0	42.4	9,670
80.0	32.3	14,370	90.0	30.6	12,010	95.0	34.2	10,970	100.0	36.9	9,960	105.0	39.0	8,990
85.0	25.7	13,310	95.0	24.3	11,190	100.0	29.2	10,250	105.0	32.7	9,280	110.0	35.4	8,390
						105.0	23.2	9,610	110.0	27.9	8,680	115.0	31.3	7,840
									115.0	22.2	8,170	120.0	26.7	7,360
												125.0	21.2	6,940
Reeves		7	Reeves		6	Reeves		6	Reeves		5	Reeves		5

Note: Designed and rated to comply with ANSI Code B30.5.

Capacities based on factors other than machine stability such as structural competence are shown by asterisk * in the charts. Refer to notes P10.



Crane Boom Lifting Capacity

Unit: lbs

Counterweight: 57,800 lbs, Carbody weight: 14,300 lbs

140' Boom			150' Boom			160' Boom			170' Boom			180' Boom		
Load Radius (ft)	Boom Angle (deg.)	360° Rated Load (lbs)	Load Radius (ft)	Boom Angle (deg.)	360° Rated Load (lbs)	Load Radius (ft)	Boom Angle (deg.)	360° Rated Load (lbs)	Load Radius (ft)	Boom Angle (deg.)	360° Rated Load (lbs)	Load Radius (ft)	Boom Angle (deg.)	360° Rated Load (lbs)
24.0	81.9	61,720 *	26.0	81.7	52,680 *	28.0	81.5	44,090 *	28.0	82.0	38,800 *	30.0	81.8	33,730 *
26.0	81.1	60,840 *	28.0	80.9	51,800 *	30.0	80.7	43,430 *	30.0	81.3	38,130 *	32.0	81.1	33,060 *
28.0	80.2	57,980	30.0	80.1	51,140 *	32.0	80.0	42,760 *	32.0	80.6	37,470 *	34.0	80.5	32,620 *
30.0	79.4	52,530	32.0	79.3	47,810	34.0	79.3	42,100 *	34.0	79.9	37,030 *	36.0	79.8	31,960 *
32.0	78.6	47,950	34.0	78.6	43,890	36.0	78.6	40,520	36.0	79.2	36,370 *	38.0	79.2	31,520 *
34.0	77.7	44,040	36.0	77.8	40,540	38.0	77.8	37,560	38.0	78.6	35,710 *	40.0	78.5	31,080 *
36.0	76.9	40,670	38.0	77.0	37,610	40.0	77.1	34,980	40.0	77.9	34,780	45.0	76.9	29,250
38.0	76.0	37,740	40.0	76.2	35,030	45.0	75.2	29,710	45.0	76.1	29,510	50.0	75.3	25,220
40.0	75.2	35,160	45.0	74.2	29,760	50.0	73.4	25,680	50.0	74.4	25,460	55.0	73.6	22,000
45.0	73.1	29,910	50.0	72.2	25,720	55.0	71.5	22,480	55.0	72.6	22,260	60.0	72.0	19,400
50.0	70.9	25,880	55.0	70.2	22,530	60.0	69.6	19,880	60.0	70.9	19,660	65.0	70.3	17,260
55.0	68.7	22,680	60.0	68.2	19,950	65.0	67.7	17,720	65.0	69.1	17,520	70.0	68.6	15,450
60.0	66.5	20,100	65.0	66.1	17,810	70.0	65.7	15,930	70.0	67.2	15,710	75.0	66.8	13,910
65.0	64.3	17,960	70.0	64.0	16,000	75.0	63.7	14,390	75.0	65.4	14,170	80.0	65.1	12,560
70.0	62.0	16,150	75.0	61.8	14,480	80.0	61.7	13,070	80.0	63.5	12,850	85.0	63.3	11,410
75.0	59.6	14,630	80.0	59.6	13,160	85.0	59.7	11,920	85.0	61.6	11,680	90.0	61.5	10,400
80.0	57.2	13,310	85.0	57.4	12,010	90.0	57.6	10,910	90.0	59.7	10,670	95.0	59.7	9,500
85.0	54.7	12,160	90.0	55.1	11,000	95.0	55.4	10,000	95.0	57.7	9,780	100.0	57.8	8,700
90.0	52.2	11,170	95.0	52.7	10,110	100.0	53.2	9,210	100.0	55.7	8,990	105.0	55.9	8,000
95.0	49.5	10,290	100.0	50.3	9,320	105.0	50.9	8,500	105.0	53.6	8,260	110.0	54.0	7,340
100.0	46.8	9,500	105.0	47.7	8,640	110.0	48.6	7,870	110.0	51.5	7,620	115.0	52.0	6,760
105.0	43.9	8,790	110.0	45.1	8,000	115.0	46.1	7,290	115.0	49.3	7,050	120.0	49.9	6,230
110.0	40.8	8,170	115.0	42.3	7,420	120.0	43.6	6,760	120.0	47.0	6,520	125.0	47.8	5,700
115.0	37.5	7,620	120.0	39.4	6,920	125.0	40.9	6,280	125.0	44.7	6,040	130.0	45.6	5,220
120.0	34.0	7,120	125.0	36.2	6,450	130.0	38.1	5,860	130.0	42.2	5,570	135.0	43.3	4,780
125.0	30.1	6,650	130.0	32.8	6,040	135.0	35.0	5,440	135.0	39.6	5,150	140.0	40.9	4,380
130.0	25.7	6,260	135.0	29.1	5,660	140.0	31.8	5,070	140.0	36.9	4,760	145.0	38.4	4,030
135.0	20.5	5,900	140.0	24.8	5,330	145.0	28.1	4,710	145.0	34.0	4,380	150.0	35.8	3,680
						150.0	24.0	4,380	150.0	30.8	4,050	155.0	33.0	3,370
									160.0	27.3	3,760	160.0	29.9	3,100
										23.3	3,500	165.0	26.5	2,840
												170.0	22.6	2,620
Reeves		4	Reeves		4	Reeves		4	Reeves		4	Reeves		2
190' Boom			200' Boom											
Load Radius (ft)	Boom Angle (deg.)	360° Rated Load (lbs)	Load Radius (ft)	Boom Angle (deg.)	360° Rated Load (lbs)									
32.0	81.6	29,540 *	34.0	81.4	25,790 *									
34.0	81.0	28,880 *	36.0	80.9	25,350 *									
36.0	80.4	28,430 *	38.0	80.3	24,910 *									
38.0	79.8	27,990 *	40.0	79.7	24,470 *									
40.0	79.2	27,550 *	45.0	78.2	23,360 *									
45.0	77.6	26,450 *	50.0	76.8	22,480 *									
50.0	76.1	25,300	55.0	75.3	21,380 *									
55.0	74.5	22,110	60.0	73.8	19,310									
60.0	72.9	19,510	65.0	72.3	17,150									
65.0	71.3	17,350	70.0	70.8	15,320									
70.0	69.7	15,540	75.0	69.3	13,770									
75.0	68.1	13,990	80.0	67.7	12,430									
80.0	66.5	12,650	85.0	66.2	11,260									
85.0	64.8	11,500	90.0	64.6	10,250									
90.0	63.2	10,470	95.0	63.0	9,340									
95.0	61.4	9,560	100.0	61.4	8,530									
100.0	59.7	8,770	105.0	59.7	7,820									
105.0	57.9	8,040	110.0	58.1	7,160									
110.0	56.1	7,400	115.0	56.3	6,560									
115.0	54.3	6,810	120.0	54.6	5,970									
120.0	52.4	6,280	125.0	52.8	5,440									
125.0	50.5	5,750	130.0	51.0	4,960									
130.0	48.5	5,260	135.0	49.1	4,510									
135.0	46.4	4,800	140.0	47.2	4,100									
140.0	44.3	4,400	145.0	45.2	3,700									
145.0	42.1	4,010	150.0	43.1	3,350									
150.0	39.8	3,680	155.0	41.0	3,040									
155.0	37.4	3,350	160.0	38.7	2,730									
160.0	34.8	3,040												
165.0	32.0	2,770												
170.0	29.1	2,510												
Reeves		2	Reeves		2									

Note: Designed and rated to comply with ANSI Code B30.5.
 Capacities based on factors other than machine stability such as structural competence are shown by asterisk * in the charts.
 Refer to notes P10.

LIFTING CAPACITY



Fixed Jib Lifting Capacity

Unit: lbs

Counterweight: 57,800 lbs, Carbody weight: 14,300 lbs

80' Boom																	
Load Radius (ft)	30 ft Jib				40 ft Jib				50 ft Jib				60 ft Jib				Load Radius (ft)
	Offset Angle (deg.)		Offset Angle (deg.)		Offset Angle (deg.)		Offset Angle (deg.)		Offset Angle (deg.)		Offset Angle (deg.)		Offset Angle (deg.)				
	10	30	10	30	10	30	10	30	10	30	10	30	10	30			
Boom Angle (deg.)	Rated Load (lbs)	Boom Angle (deg.)	Rated Load (lbs)	Boom Angle (deg.)	Rated Load (lbs)	Boom Angle (deg.)	Rated Load (lbs)	Boom Angle (deg.)	Rated Load (lbs)	Boom Angle (deg.)	Rated Load (lbs)	Boom Angle (deg.)	Rated Load (lbs)	Boom Angle (deg.)	Rated Load (lbs)		
30	79.3	24,000*														30	
32	78.0	24,000*														32	
34	77.0	24,000*			79.3	24,000*										34	
36	75.9	24,000*			78.3	24,000*										36	
38	74.9	24,000*	79.6	20,230*	77.4	24,000*			79.3	20,000*						38	
40	73.8	24,000*	78.5	19,730*	76.4	24,000*			78.4	20,000*			79.8	18,000*		40	
45	71.1	24,000*	75.7	18,600*	73.9	24,000*	79.7	15,360*	76.1	20,000*			77.7	17,940*		45	
50	68.3	24,000*	72.8	17,610*	71.4	22,150*	77.1	14,480*	73.8	18,540*			75.6	16,330*		50	
55	65.3	23,890	69.7	16,710*	68.7	20,280*	74.3	13,640*	71.3	16,950*	78.0	11,080*	73.3	14,900*		55	
60	62.3	21,340	66.7	15,960*	66.1	18,800*	71.6	12,980*	68.9	15,690*	75.5	10,490*	71.2	13,750*	78.7	8,950*	60
65	59.3	19,200	63.6	15,290*	63.4	17,520*	68.8	12,360*	66.5	14,610*	73.0	9,980*	69.0	12,780*	76.4	8,480*	65
70	56.2	17,410	60.3	14,700*	60.6	16,400*	65.9	11,830*	64.0	13,660*	70.4	9,540*	66.7	11,900*	74.1	8,060*	70
75	52.8	15,780	56.7	14,150*	57.6	15,360*	62.7	11,350*	61.3	12,760*	67.6	9,100*	64.2	11,110*	71.5	7,670*	75
80	49.3	14,460	53.1	13,710*	54.6	14,520*	59.6	10,930*	58.7	12,030*	64.8	8,730*	61.9	10,440*	69.0	7,340*	80
85	45.7	13,330			51.5	13,470	56.3	10,560*	56.0	11,390*	62.0	8,420*	59.5	9,850*	66.5	7,030*	85
90	41.8	12,320			48.3	12,450	52.9	10,250*	53.2	10,800*	59.0	8,130*	57.0	9,320*	63.9	6,760*	90
95	37.2	11,370			44.6	11,500			50.0	10,250*	55.6	7,840*	54.2	8,810*	60.9	6,500*	95
100	32.4	10,600			40.8	10,710			46.9	9,780*	52.3	7,620*	51.5	8,390*	58.1	6,280*	100
105					36.7	10,000			43.6	9,360*			48.7	8,020*	55.0	6,100*	105
110									40.0	8,990*			45.7	7,670*	51.8	5,930*	110
115									35.8	8,640*			42.3	7,340*			115
120													38.8	7,050*			120
125													35.1	6,810*			125
Reeves	2		2		2		1		2		1		2		1		Reeves

90' Boom																	
Load Radius (ft)	30 ft Jib				40 ft Jib				50 ft Jib				60 ft Jib				Load Radius (ft)
	Offset Angle (deg.)		Offset Angle (deg.)		Offset Angle (deg.)		Offset Angle (deg.)		Offset Angle (deg.)		Offset Angle (deg.)		Offset Angle (deg.)				
	10	30	10	30	10	30	10	30	10	30	10	30	10	30			
Boom Angle (deg.)	Rated Load (lbs)	Boom Angle (deg.)	Rated Load (lbs)	Boom Angle (deg.)	Rated Load (lbs)	Boom Angle (deg.)	Rated Load (lbs)	Boom Angle (deg.)	Rated Load (lbs)	Boom Angle (deg.)	Rated Load (lbs)	Boom Angle (deg.)	Rated Load (lbs)	Boom Angle (deg.)	Rated Load (lbs)		
32	79.1	24,000*														32	
34	78.1	24,000*														34	
36	77.1	24,000*			79.3	24,000*										36	
38	76.2	24,000*			78.4	24,000*			80.0	20,000*						38	
40	75.2	24,000*	79.5	20,170*	77.5	24,000*			79.2	20,000*						40	
45	72.7	24,000*	77.0	19,060*	75.2	24,000*			77.1	20,000*			78.6	18,000*		45	
50	70.2	24,000*	74.4	18,120*	72.9	23,320*	78.2	14,810*	75.0	19,400*			76.6	17,040*		50	
55	67.5	23,690	71.6	17,210*	70.4	21,400*	75.6	14,020*	72.7	17,790*	78.9	11,300*	74.5	15,580*		55	
60	64.9	21,120	68.9	16,460*	68.1	19,880*	73.2	13,330*	70.5	16,510*	76.7	10,730*	72.5	14,410*	79.5	9,100*	60
65	62.2	19,000	66.1	15,800*	65.6	18,560*	70.7	12,760*	68.3	15,380*	74.4	10,250*	70.5	13,400*	77.4	8,660*	65
70	59.4	17,190	63.3	15,210*	63.2	17,370	68.1	12,230*	66.1	14,390*	72.0	9,780*	68.4	12,520*	75.3	8,240*	70
75	56.4	15,560	60.2	14,660*	60.4	15,740	65.3	11,720*	63.6	13,490*	69.5	9,360*	66.1	11,680*	72.9	7,870*	75
80	53.5	14,240	57.1	14,190*	57.8	14,410	62.5	11,300*	61.3	12,720*	67.0	8,990*	64.0	11,000*	70.7	7,530*	80
85	50.4	13,090	53.9	13,330	55.1	13,240	59.7	10,930*	58.8	12,050*	64.5	8,680*	61.8	10,400*	68.4	7,230*	85
90	47.1	12,100			52.3	12,230	56.7	10,580*	56.3	11,440*	61.8	8,370*	59.5	9,850*	66.0	6,960*	90
95	43.4	11,150			49.1	11,280	53.4	10,270*	53.6	10,860*	58.9	8,110*	57.1	9,320*	63.4	6,700*	95
100	39.7	10,360			46.0	10,490			50.9	10,380*	56.1	7,870*	54.7	8,880*	60.9	6,480*	100
105	35.6	9,650			42.7	9,760			48.0	9,850	53.1	7,640*	52.2	8,480*	58.3	6,280*	105
110					39.1	9,120			45.0	9,210			49.6	8,110*	55.5	6,100*	110
115					35.0	8,500			41.7	8,570			46.7	7,760*	52.4	5,930*	115
120									38.2	8,040			43.8	7,450*			120
125									34.4	7,560			40.7	7,180*			125
130													37.4	6,940*			130
135													33.8	6,720*			135
Reeves	2		2		2		1		2		1		2		1		Reeves

Note: Designed and rated to comply with ANSI Code B30.5.

Capacities based on factors other than machine stability such as structural competence are shown by asterisk * in the charts.

Refer to notes P10.



Fixed Jib Lifting Capacity

Unit: lbs

Counterweight: 57,800 lbs, Carbody weight: 14,300 lbs

100' Boom

Load Radius (ft)	30 ft Jib				40 ft Jib				50 ft Jib				60 ft Jib				Load Radius (ft)
	Offset Angle (deg.)		Offset Angle (deg.)		Offset Angle (deg.)		Offset Angle (deg.)		Offset Angle (deg.)		Offset Angle (deg.)		Offset Angle (deg.)				
	10	30	10	30	10	30	10	30	10	30	10	30	10	30			
Boom Angle (deg.)	Rated Load (lbs)	Boom Angle (deg.)	Rated Load (lbs)	Boom Angle (deg.)	Rated Load (lbs)	Boom Angle (deg.)	Rated Load (lbs)	Boom Angle (deg.)	Rated Load (lbs)	Boom Angle (deg.)	Rated Load (lbs)	Boom Angle (deg.)	Rated Load (lbs)	Boom Angle (deg.)	Rated Load (lbs)		
32	79.9	24,000*														32	
34	79.0	24,000*														34	
36	78.1	24,000*			80.0	24,000*										36	
38	77.2	24,000*			79.2	24,000*										38	
40	76.4	24,000*			78.4	24,000*			79.9	20,000*						40	
45	74.1	24,000*	78.0	19,480*	76.3	24,000*			78.0	20,000*			79.3	18,000*		45	
50	71.8	24,000*	75.7	18,560*	74.2	24,000*	79.1	15,100*	76.0	20,000*			77.5	17,680*		50	
55	69.3	23,450	73.2	17,650*	71.9	22,480*	76.7	14,320*	73.9	18,580*	79.7	11,500*	75.5	16,200*		55	
60	67.0	20,870	70.7	16,930*	69.7	20,920*	74.5	13,660*	71.9	17,260*	77.7	10,950*	73.7	15,030*		60	
65	64.5	18,730	68.2	16,260*	67.5	18,950	72.2	13,090*	69.9	16,110*	75.5	10,470*	71.8	13,990*	78.3	8,810*	65
70	62.1	16,930	65.7	15,670*	65.3	17,150	69.9	12,560*	67.8	15,120*	73.4	10,030*	69.9	13,690*	76.3	8,420*	70
75	59.4	15,290	62.9	15,100*	62.8	15,490	67.3	12,050*	65.6	14,170*	71.1	9,610*	67.8	12,250*	74.2	8,040*	75
80	56.7	13,970	60.2	14,300	60.4	14,150	64.9	11,640*	63.4	13,380*	68.8	9,230*	65.8	11,550*	72.1	7,710*	80
85	54.0	12,830	57.4	13,110	58.0	13,000	62.4	11,260*	61.2	12,690*	66.5	8,920*	63.8	10,910*	70.0	7,420*	85
90	51.2	11,810	54.5	12,050	55.5	11,970	59.8	10,910*	59.0	12,050*	64.2	8,610*	61.7	10,360*	67.9	7,160*	90
95	48.1	10,860	51.2	11,060	52.8	11,020	56.9	10,580*	56.5	11,130	61.6	8,330*	59.5	9,810*	65.5	6,900*	95
100	45.0	10,070			50.1	10,200	54.0	10,310*	54.1	10,310	59.1	8,090*	57.3	9,340*	63.2	6,670*	100
105	41.7	9,360			47.2	9,500			51.6	9,590	56.4	7,870*	55.1	8,920*	60.9	6,450*	105
110	38.1	8,730			44.3	8,860			49.0	8,950	53.7	7,690*	52.7	8,550*	58.4	6,280*	110
115	34.0	8,130			40.9	8,220			46.1	8,310			50.2	8,170*	55.7	6,100*	115
120					37.4	7,690			43.2	7,780			47.7	7,820	53.1	5,950*	120
125					33.7	7,230			40.2	7,290			45.1	7,340			125
130									36.8	6,830			42.3	6,870			130
135									33.2	6,430			39.4	6,480			135
140													35.9	6,060			140
145													32.4	5,730			145
Reeves	2		2		2		1		2		1		2		1		Reeves

110' Boom

Load Radius (ft)	30 ft Jib				40 ft Jib				50 ft Jib				60 ft Jib				Load Radius (ft)
	Offset Angle (deg.)		Offset Angle (deg.)		Offset Angle (deg.)		Offset Angle (deg.)		Offset Angle (deg.)		Offset Angle (deg.)		Offset Angle (deg.)				
	10	30	10	30	10	30	10	30	10	30	10	30	10	30			
Boom Angle (deg.)	Rated Load (lbs)	Boom Angle (deg.)	Rated Load (lbs)	Boom Angle (deg.)	Rated Load (lbs)	Boom Angle (deg.)	Rated Load (lbs)	Boom Angle (deg.)	Rated Load (lbs)	Boom Angle (deg.)	Rated Load (lbs)	Boom Angle (deg.)	Rated Load (lbs)	Boom Angle (deg.)	Rated Load (lbs)		
34	79.8	24,000														34	
36	79.0	24,000														36	
38	78.2	24,000			79.9	24,000*										38	
40	77.3	24,000			79.2	24,000*										40	
45	75.3	24,000	79.0	19,860*	77.2	24,000*			78.8	20,000*			80.0	18,000*		45	
50	73.2	24,000	76.8	18,930*	75.3	24,000*	79.9	15,360*	76.9	20,000*			78.3	18,000*		50	
55	70.9	23,320	74.5	18,070*	73.2	23,500*	77.7	14,610*	75.0	19,330*			76.4	16,820*		55	
60	68.7	20,740	72.2	17,350*	71.2	20,960	75.6	13,970*	73.1	17,980*	78.5	11,150*	74.7	15,600*		60	
65	66.5	18,580	70.0	16,680*	69.1	18,800	73.5	13,400*	71.2	16,820*	76.5	10,670*	72.9	14,570*	79.1	8,970*	65
70	64.3	16,770	67.7	16,090*	67.1	16,970	71.4	12,870*	69.3	15,800*	74.6	10,250*	71.1	13,640*	77.2	8,570*	70
75	61.8	15,140	65.1	15,520*	64.8	15,340	69.1	12,380*	67.2	14,830*	72.4	9,830*	69.2	12,780*	75.2	8,200*	75
80	59.4	13,820	62.7	14,170	62.7	13,990	66.9	11,940*	65.2	14,020*	70.4	9,470*	67.3	12,050*	73.3	7,890*	80
85	57.0	12,670	60.2	12,980	60.5	12,830	64.6	11,570*	63.2	12,960	68.3	9,140*	65.5	11,410*	71.4	7,580*	85
90	54.5	11,660	57.6	11,920	58.2	11,810	62.2	11,220*	61.2	11,920	66.1	8,840*	63.6	10,840*	69.4	7,310*	90
95	51.8	10,710	54.8	10,930	55.7	10,840	59.7	10,890*	58.9	10,950	63.8	8,550*	61.5	10,270*	67.2	7,050*	95
100	49.1	9,920	52.0	10,110	53.3	10,050	57.1	10,470	56.7	10,160	61.5	8,310*	59.5	9,780*	65.2	6,830*	100
105	46.3	9,210			50.8	9,320	54.5	9,700	54.5	9,430	59.2	8,090*	57.5	9,360*	63.0	6,630*	105
110	43.3	8,570			48.2	8,680	51.8	9,010	52.2	8,770	56.7	7,890*	55.4	8,840	60.9	6,430*	110
115	39.9	7,950			45.4	8,040			49.7	8,130	54.0	7,690*	53.1	8,200	58.4	6,260*	115
120	36.5	7,420			42.5	7,510			47.2	7,600			50.9	7,640	56.1	6,100*	120
125	32.7	6,960			39.4	7,050			44.5	7,120			48.6	7,160	53.6	5,970*	125
130					36.1	6,610			41.8	6,650			46.2	6,700			130
135					32.5	6,190			38.8	6,260			43.6	6,300			135
140									35.4	5,860			40.8	5,880			140
145													37.9	5,530			145
150													34.8	5,220			150
Reeves	2		2		2		1		2		1		2		1		Reeves

Note: Designed and rated to comply with ANSI Code B30.5.

Capacities based on factors other than machine stability such as structural competence are shown by asterisk * in the charts.

Refer to notes P10.

LIFTING CAPACITY



Fixed Jib Lifting Capacity

Unit: lbs

Counterweight: 57,800 lbs, Carbody weight: 14,300 lbs

120' Boom

Load Radius (ft)	30 ft Jib				40 ft Jib				50 ft Jib				60 ft Jib				Load Radius (ft)
	Offset Angle (deg.)		Offset Angle (deg.)		Offset Angle (deg.)		Offset Angle (deg.)		Offset Angle (deg.)		Offset Angle (deg.)		Offset Angle (deg.)				
	10		30		10		30		10		30		10		30		
	Boom Angle (deg.)	Rated Load (lbs)	Boom Angle (deg.)	Rated Load (lbs)	Boom Angle (deg.)	Rated Load (lbs)	Boom Angle (deg.)	Rated Load (lbs)	Boom Angle (deg.)	Rated Load (lbs)	Boom Angle (deg.)	Rated Load (lbs)	Boom Angle (deg.)	Rated Load (lbs)	Boom Angle (deg.)	Rated Load (lbs)	
36	79.7	24,000*															36
38	79.0	24,000*															38
40	78.2	24,000*			79.9	24,000*											40
45	76.3	24,000*	79.7	20,190*	78.1	24,000*			79.5	20,000*							45
50	74.3	24,000*	77.7	19,290*	76.2	24,000*			77.7	20,000*			78.9	18,000*			50
55	72.2	23,100	75.6	18,450*	74.3	23,360	78.5	14,880*	75.9	20,000*			77.2	17,390*			55
60	70.2	20,520	73.5	17,720*	72.4	20,760	76.6	14,240*	74.2	18,690*	79.2	11,330*	75.6	16,180*			60
65	68.2	18,360	71.4	17,080*	70.5	18,580	74.7	13,690*	72.4	17,500*	77.4	10,860*	73.9	15,120*	79.7	9,080*	65
70	66.1	16,550	69.3	16,490*	68.6	16,770	72.7	13,160*	70.6	16,440*	75.6	10,420*	72.2	14,170*	78.0	8,700*	70
75	63.9	14,920	67.0	15,340	66.5	15,100	70.6	12,670*	68.7	15,250	73.6	10,030*	70.4	13,290*	76.1	8,350*	75
80	61.7	13,600	64.8	13,970	64.5	13,770	68.5	12,250*	66.8	13,910	71.7	9,670*	68.7	12,560*	74.4	8,040*	80
85	59.5	12,430	62.6	12,780	62.5	12,610	66.4	11,860*	65.0	12,740	69.7	9,340*	67.0	11,900*	72.6	7,730*	85
90	57.3	11,410	60.2	11,720	60.5	11,570	64.3	11,500*	63.1	11,700	67.8	9,060*	65.2	11,300*	70.7	7,470*	90
95	54.8	10,470	57.7	10,730	58.2	10,620	62.0	11,130	61.0	10,730	65.6	8,770*	63.3	10,730*	68.7	7,230*	95
100	52.4	9,650	55.2	9,890	56.0	9,810	59.7	10,290	59.0	9,920	63.6	8,500*	61.5	9,980	66.8	7,010*	100
105	49.9	8,950	52.6	9,140	53.8	9,080	57.4	9,520	57.0	9,190	61.4	8,280*	59.6	9,250	64.9	6,790*	105
110	47.3	8,310			51.5	8,440	55.0	8,840	54.9	8,530	59.3	8,060*	57.7	8,590	62.9	6,610*	110
115	44.5	7,690			49.0	7,800	52.3	8,150	52.6	7,890	56.8	7,870*	55.6	7,950	60.7	6,410*	115
120	41.6	7,160			46.5	7,270			50.4	7,360	54.5	7,690*	53.6	7,400	58.6	6,260*	120
125	38.5	6,670			43.8	6,790			48.1	6,850	52.1	7,250	51.5	6,920	56.4	6,100*	125
130	35.3	6,230			41.1	6,320			45.7	6,410			49.3	6,450	54.1	5,970*	130
135	31.7	5,840			38.1	5,930			43.1	5,990			47.1	6,040	51.7	5,860*	135
140					34.7	5,530			40.3	5,590			44.6	5,640			140
145									37.4	5,240			42.2	5,290			145
150									34.3	4,910			39.6	4,960			150
155													36.8	4,650			155
160													33.6	4,340			160
Reeves	2		2		2		1		2		1		2		1		Reeves

130' Boom

Load Radius (ft)	30 ft Jib				40 ft Jib				50 ft Jib				60 ft Jib				Load Radius (ft)
	Offset Angle (deg.)		Offset Angle (deg.)		Offset Angle (deg.)		Offset Angle (deg.)		Offset Angle (deg.)		Offset Angle (deg.)		Offset Angle (deg.)				
	10		30		10		30		10		30		10		30		
	Boom Angle (deg.)	Rated Load (lbs)	Boom Angle (deg.)	Rated Load (lbs)	Boom Angle (deg.)	Rated Load (lbs)	Boom Angle (deg.)	Rated Load (lbs)	Boom Angle (deg.)	Rated Load (lbs)	Boom Angle (deg.)	Rated Load (lbs)	Boom Angle (deg.)	Rated Load (lbs)	Boom Angle (deg.)	Rated Load (lbs)	
38	79.7	24,000*															38
40	79.0	24,000*															40
45	77.1	24,000*			78.8	24,000*			80.0	20,000*			79.5	18,000*			45
50	75.3	24,000*	78.5	19,620*	77.1	24,000*			78.4	20,000*			79.9	18,000*			50
55	73.4	22,880	76.5	18,780*	75.2	23,170	79.3	15,100*	76.7	20,000*			77.9	17,920*			55
60	71.5	20,300	74.6	18,070*	73.5	20,540	77.5	14,500*	75.1	19,330*	79.9	11,480*	76.3	16,710*			60
65	69.6	18,140	72.7	17,430*	71.7	18,380	75.7	13,930*	73.4	18,140*	78.2	11,020*	74.8	15,630*			65
70	67.7	16,330	70.7	16,860	69.9	16,550	73.8	13,420*	71.7	16,710	76.5	10,620*	73.2	14,680*	78.7	8,840*	70
75	65.6	14,680	68.6	15,140	68.0	14,880	71.8	12,940*	69.9	15,030	74.6	10,200*	71.5	13,800*	76.9	8,480*	75
80	63.6	13,350	66.6	13,770	66.2	13,550	69.9	12,520*	68.2	13,690	72.8	9,850*	69.9	13,050*	75.3	8,170*	80
85	61.6	12,210	64.5	12,580	64.3	12,380	68.0	12,140*	66.5	12,520	71.0	9,540*	68.3	12,360*	73.6	7,890*	85
90	59.6	11,170	62.4	11,530	62.4	11,350	66.1	11,770*	64.7	11,480	69.2	9,230*	66.6	11,570	71.9	7,620*	90
95	57.3	10,220	60.1	10,510	60.3	10,380	63.9	10,950	62.8	10,510	67.2	8,950*	64.8	10,580	70.0	7,360*	95
100	55.2	9,430	57.9	9,700	58.3	9,560	61.9	10,090	61.0	9,700	65.3	8,700*	63.1	9,760	68.3	7,140*	100
105	52.9	8,700	55.6	8,950	56.3	8,860	59.8	9,340	59.1	8,950	63.4	8,480*	61.4	9,030	66.5	6,940*	105
110	50.6	8,060	53.2	8,260	54.2	8,200	57.6	8,640	57.2	8,310	61.4	8,260*	59.6	8,370	64.6	6,740*	110
115	48.1	7,450			51.9	7,560	55.2	7,980	55.1	7,670	59.2	8,040*	57.7	7,730	62.6	6,560*	115
120	45.6	6,920			49.7	7,030	52.9	7,400	53.1	7,120	57.1	7,600	55.9	7,180	60.7	6,390*	120
125	43.0	6,430			47.4	6,540			51.0	6,630	54.9	7,070	54.0	6,670	58.7	6,230*	125
130	40.2	5,990			45.0	6,080			48.8	6,170	52.6	6,590	52.0	6,230	56.6	6,100*	130
135	37.3	5,570			42.5	5,680			46.6	5,750			50.0	5,820	54.5	5,970*	135
140	33.9	5,200			39.6	5,260			44.1	5,350			47.8	5,400	52.2	5,840	140
145					36.8	4,930			41.7	5,000			45.6	5,040			145
150					33.7	4,600			39.1	4,670			43.3	4,710			150
155									36.3	4,360			41.0	4,400			155
160									33.1	4,030			38.3	4,070			160
165													35.6	3,760			165
170													32.7	3,480			170
Reeves	2		2		2		1		2		1		2		1		Reeves

Note: Designed and rated to comply with ANSI Code B30.5.

Capacities based on factors other than machine stability such as structural competence are shown by asterisk * in the charts.

Refer to notes P10.



Fixed Jib Lifting Capacity

Unit: lbs

Counterweight: 57,800 lbs, Carbody weight: 14,300 lbs

140' Boom

Load Radius (ft)	30 ft Jib				40 ft Jib				50 ft Jib				60 ft Jib				Load Radius (ft)
	Offset Angle (deg.)		Offset Angle (deg.)		Offset Angle (deg.)		Offset Angle (deg.)		Offset Angle (deg.)		Offset Angle (deg.)		Offset Angle (deg.)				
	10	30	10	30	10	30	10	30	10	30	10	30	10	30			
	Boom Angle (deg.)	Rated Load (lbs)	Boom Angle (deg.)	Rated Load (lbs)	Boom Angle (deg.)	Rated Load (lbs)	Boom Angle (deg.)	Rated Load (lbs)	Boom Angle (deg.)	Rated Load (lbs)	Boom Angle (deg.)	Rated Load (lbs)	Boom Angle (deg.)	Rated Load (lbs)	Boom Angle (deg.)	Rated Load (lbs)	
40	79.6	24,000*															40
45	77.9	24,000*			79.4	24,000*											45
50	76.2	24,000*	79.2	19,900*	77.8	24,000*			79.1	20,000*							50
55	74.4	22,680	77.4	19,090*	76.1	22,970	79.9	15,320*	77.4	20,000*			78.5	18,000*			55
60	72.6	20,080	75.6	18,400*	74.4	20,340	78.2	14,720*	75.9	19,970*			77.0	17,210*			60
65	70.9	17,940	73.8	17,760*	72.8	18,180	76.5	14,170*	74.3	18,360	78.8	11,170*	75.6	16,130*			65
70	69.1	16,110	72.0	16,680	71.1	16,330	74.8	13,690*	72.8	16,510	77.2	10,780*	74.1	15,160*	79.3	8,950*	70
75	67.2	14,460	70.0	14,960	69.3	14,680	72.9	13,180*	71.1	14,830	75.5	10,380*	72.5	14,260*	77.7	8,590*	75
80	65.3	13,130	68.1	13,600	67.6	13,330	71.2	12,760*	69.4	13,490	73.8	10,030*	71.0	13,490*	76.1	8,310*	80
85	63.5	11,970	66.2	12,380	65.9	12,160	69.4	12,380*	67.8	12,300	72.1	9,720*	69.4	12,410	74.5	8,020*	85
90	61.6	10,950	64.3	11,330	64.1	11,130	67.6	11,810	66.2	11,260	70.4	9,430*	67.9	11,350	72.9	7,760*	90
95	59.5	9,980	62.2	10,310	62.2	10,160	65.6	10,780	64.4	10,290	68.6	9,120*	66.2	10,380	71.2	7,510*	95
100	57.5	9,190	60.1	9,500	60.3	9,340	63.7	9,920	62.7	9,470	66.8	8,880*	64.6	9,540	69.5	7,270*	100
105	55.5	8,460	58.1	8,750	58.5	8,610	61.8	9,140	60.9	8,730	65.0	8,660*	63.0	8,810	67.8	7,070*	105
110	53.4	7,820	55.9	8,060	56.6	7,950	59.8	8,460	59.2	8,060	63.2	8,440*	61.4	8,150	66.1	6,870*	110
115	51.1	7,180	53.5	7,400	54.5	7,340	57.6	7,780	57.2	7,420	61.2	8,000*	59.6	7,490	64.3	6,700*	115
120	48.9	6,650	51.3	6,850	52.5	6,790	55.5	7,200	55.4	6,900	59.3	7,420	57.9	6,960	62.5	6,520*	120
125	46.6	6,170			50.4	6,300	53.4	6,670	53.5	6,390	57.3	6,900	56.1	6,450	60.7	6,370*	125
130	44.2	5,730			48.2	5,840			51.6	5,930	55.3	6,390	54.3	5,990	58.8	6,230*	130
135	41.7	5,330			46.0	5,420			49.5	5,510	53.1	5,950	52.5	5,570	56.9	6,100*	135
140	38.8	4,910			43.5	5,020			47.3	5,090			50.5	5,150	54.7	5,640	140
145	36.0	4,560			41.1	4,670			45.1	4,730			48.5	4,800	52.7	5,240	145
150	32.9	4,210			38.5	4,320			42.9	4,400			46.5	4,470			150
155					35.7	3,940			40.5	4,030			44.4	4,100			155
160					32.5	3,610			37.8	3,680			42.0	3,720			160
165									35.1	3,370			39.7	3,410			165
170									32.2	3,080			37.3	3,130			170
175													34.6	2,840			175
Reeves	2		2		2		1		2		1		2		1		Reeves

150' Boom

Load Radius (ft)	30 ft Jib				40 ft Jib				50 ft Jib				60 ft Jib				Load Radius (ft)
	Offset Angle (deg.)		Offset Angle (deg.)		Offset Angle (deg.)		Offset Angle (deg.)		Offset Angle (deg.)		Offset Angle (deg.)		Offset Angle (deg.)				
	10	30	10	30	10	30	10	30	10	30	10	30	10	30			
	Boom Angle (deg.)	Rated Load (lbs)	Boom Angle (deg.)	Rated Load (lbs)	Boom Angle (deg.)	Rated Load (lbs)	Boom Angle (deg.)	Rated Load (lbs)	Boom Angle (deg.)	Rated Load (lbs)	Boom Angle (deg.)	Rated Load (lbs)	Boom Angle (deg.)	Rated Load (lbs)	Boom Angle (deg.)	Rated Load (lbs)	
45	78.6	24,000*			80.0	24,000*											45
50	77.0	24,000*			78.5	24,000*			79.6	20,000*							50
55	75.3	22,530	79.9	20,170*	76.8	22,810			78.1	20,000*			79.1	18,000*			55
60	73.6	19,920	76.4	18,690*	75.3	20,190	78.9	14,920*	76.6	20,000*			77.7	17,700*			60
65	72.0	17,790	74.8	18,070*	73.7	18,030	77.3	14,390*	75.1	18,200	79.4	11,330*	76.3	16,600*			65
70	70.3	15,960	73.1	16,550	72.1	16,180	75.7	13,910*	73.7	16,350	77.9	10,930*	74.9	15,650*	79.9	9,060*	70
75	68.5	14,300	71.2	14,830	70.5	14,520	73.9	13,420*	72.1	14,680	76.3	10,530*	73.4	14,720*	78.3	8,700*	75
80	66.8	12,980	69.5	13,470	68.8	13,180	72.3	13,000*	70.5	13,330	74.7	10,200*	71.9	13,420	76.8	8,420*	80
85	65.1	11,810	67.7	12,250	67.2	12,010	70.6	12,630*	69.0	12,140	73.1	9,870*	70.5	12,230	75.3	8,130*	85
90	63.3	10,800	65.9	11,190	65.6	10,970	68.9	11,680	67.5	11,110	71.5	9,590*	69.0	11,190	73.8	7,890*	90
95	61.4	9,830	63.9	10,180	63.8	10,000	67.1	10,670	65.8	10,110	69.8	9,300*	67.4	10,200	72.2	7,620*	95
100	59.6	9,010	62.1	9,340	62.1	9,190	65.3	9,810	64.2	9,300	68.2	9,060*	65.9	9,390	70.6	7,400*	100
105	57.7	8,310	60.2	8,590	60.4	8,460	63.5	9,030	62.6	8,570	66.5	8,810*	64.4	8,640	69.1	7,200*	105
110	55.8	7,640	58.2	7,910	58.6	7,800	61.7	8,330	60.9	7,910	64.8	8,570	62.9	7,980	67.5	7,010*	110
115	53.7	7,030	56.1	7,270	56.7	7,160	59.7	7,670	59.1	7,270	62.9	7,890	61.2	7,340	65.7	6,830*	115
120	51.7	6,500	54.0	6,700	54.8	6,610	57.8	7,090	57.4	6,720	61.2	7,290	59.6	6,790	64.1	6,650*	120
125	49.6	5,990	51.8	6,190	52.9	6,120	55.8	6,560	55.7	6,210	59.3	6,760	58.0	6,280	62.4	6,500*	125
130	47.5	5,550			51.0	5,660	53.8	6,080	53.9	5,750	57.5	6,280	56.3	5,820	60.7	6,370*	130
135	45.3	5,150			49.0	5,260			52.0	5,330	55.6	5,820	54.6	5,400	58.9	5,970	135
140	42.8	4,730			46.7	4,850			50.0	4,930	53.4	5,350	52.8	4,980	57.0	5,530	140
145	40.3	4,320			44.6	4,450			48.1	4,560			51.0	4,620	55.1	5,130	145
150	37.8	3,940			42.3	4,050			46.1	4,160			49.2	4,230	53.1	4,760	150
155	35.0	3,590			39.9	3,700			43.9	3,790			47.3	3,850			155
160	31.8	3,260			37.3	3,350			41.6	3,430			45.2	3,480			160
165					34.6	3,040			39.3	3,100			43.1	3,170			165
170									36.8	2,820			41.0	2,860			170
175									34.2	2,550			38.7	2,600			175
Reeves	2		2		2		1		2		1		2		1		Reeves

Note: Designed and rated to comply with ANSI Code B30.5.

Capacities based on factors other than machine stability such as structural competence are shown by asterisk * in the charts.

Refer to notes P10.

LIFTING CAPACITY



Fixed Jib Lifting Capacity

Unit: lbs

Counterweight: 57,800 lbs, Carbody weight: 14,300 lbs

160' Boom																	
Load Radius (ft)	30 ft Jib				40 ft Jib				50 ft Jib				60 ft Jib				Load Radius (ft)
	Offset Angle (deg.)		Offset Angle (deg.)		Offset Angle (deg.)		Offset Angle (deg.)		Offset Angle (deg.)		Offset Angle (deg.)		Offset Angle (deg.)				
	10	30	10	30	10	30	10	30	10	30	10	30	10	30			
Boom Angle (deg.)	Rated Load (lbs)	Boom Angle (deg.)	Rated Load (lbs)	Boom Angle (deg.)	Rated Load (lbs)	Boom Angle (deg.)	Rated Load (lbs)	Boom Angle (deg.)	Rated Load (lbs)	Boom Angle (deg.)	Rated Load (lbs)	Boom Angle (deg.)	Rated Load (lbs)	Boom Angle (deg.)	Rated Load (lbs)		
45	79.2	24,000*			79.0	22,830*										45	
50	77.7	24,000*														50	
55	76.1	22,350	78.8	19,640*	77.5	22,000*			78.7	20,000*			79.6	18,000*		55	
60	74.5	19,750	77.2	18,950*	76.0	20,030	79.5	15,120*	77.3	19,200*			78.3	17,800*		60	
65	73.0	17,590	75.6	18,290	74.6	17,850	78.0	14,590*	75.9	18,030	80.0	11,440*	76.9	17,060*		65	
70	71.4	15,760	74.0	16,400	73.1	16,000	76.4	14,100*	74.5	16,180	78.5	11,060*	75.6	16,090*		70	
75	69.7	14,100	72.3	14,680	71.5	14,320	74.8	13,640*	72.9	14,500	77.0	10,670*	74.2	14,610	78.9	8,810*	75
80	68.1	12,780	70.7	13,290	70.0	12,980	73.2	13,220*	71.5	13,130	75.5	10,330*	72.8	13,240	77.5	8,530*	80
85	66.5	11,610	69.0	12,080	68.4	11,810	71.7	12,630	70.1	11,940	74.0	10,030*	71.4	12,050	76.1	8,240*	85
90	64.8	10,580	67.3	11,020	66.9	10,780	70.1	11,530	68.6	10,910	72.5	9,740*	70.0	11,000	74.6	8,000*	90
95	63.0	9,630	65.5	10,000	65.2	9,780	68.4	10,510	67.0	9,920	70.9	9,450*	68.5	10,000	73.1	7,760*	95
100	61.3	8,810	63.8	9,170	63.6	8,970	66.7	9,650	65.5	9,100	69.3	9,210*	67.1	9,190	71.6	7,530*	100
105	59.6	8,090	62.0	8,420	62.0	8,240	65.1	8,880	64.0	8,370	67.8	8,970*	65.7	8,440	70.2	7,310*	105
110	57.9	7,450	60.2	7,730	60.4	7,580	63.4	8,170	62.5	7,690	66.2	8,420	64.2	7,780	68.7	7,140*	110
115	55.9	6,810	58.2	7,070	58.6	6,940	61.5	7,490	60.8	7,050	64.5	7,730	62.7	7,140	67.0	6,940*	115
120	54.1	6,280	56.3	6,520	56.9	6,410	59.8	6,920	59.2	6,500	62.8	7,140	61.2	6,590	65.5	6,790*	120
125	52.2	5,770	54.4	5,990	55.1	5,900	58.0	6,390	57.6	6,010	61.1	6,610	59.7	6,080	63.9	6,610*	125
130	50.3	5,330	52.4	5,530	53.3	5,440	56.1	5,900	55.9	5,550	59.4	6,100	58.1	5,620	62.3	6,280	130
135	48.2	4,890			51.5	5,020	54.2	5,440	54.2	5,130	57.6	5,640	56.5	5,180	60.7	5,820	135
140	46.0	4,400			49.5	4,560	52.1	5,000	52.4	4,670	55.7	5,200	54.8	4,760	58.9	5,350	140
145	43.9	4,010			47.5	4,140			50.6	4,250	53.8	4,800	53.2	4,320	57.1	4,960	145
150	41.6	3,610			45.5	3,740			48.7	3,850	51.9	4,430	51.5	3,920	55.4	4,580	150
155	39.3	3,260			43.4	3,370			46.8	3,480			49.7	3,540	53.6	4,230	155
160	36.6	2,910			41.1	3,020			44.8	3,100			47.8	3,170	51.5	3,810	160
165	33.9	2,600			38.8	2,710			42.7	2,790			46.0	2,860			165
170													44.1	2,550			170
Reeves	2		2		2		1		2		1		2		1		Reeves

170' Boom																	
Load Radius (ft)	30 ft Jib				40 ft Jib				50 ft Jib				60 ft Jib				Load Radius (ft)
	Offset Angle (deg.)		Offset Angle (deg.)		Offset Angle (deg.)		Offset Angle (deg.)		Offset Angle (deg.)		Offset Angle (deg.)		Offset Angle (deg.)				
	10	30	10	30	10	30	10	30	10	30	10	30	10	30			
Boom Angle (deg.)	Rated Load (lbs)	Boom Angle (deg.)	Rated Load (lbs)	Boom Angle (deg.)	Rated Load (lbs)	Boom Angle (deg.)	Rated Load (lbs)	Boom Angle (deg.)	Rated Load (lbs)	Boom Angle (deg.)	Rated Load (lbs)	Boom Angle (deg.)	Rated Load (lbs)	Boom Angle (deg.)	Rated Load (lbs)		
45	79.8	23,360*			79.6	20,800*										45	
50	78.3	22,830*														50	
55	76.8	22,150	79.4	19,860*	78.1	20,000*			79.2	18,500*			80.0	17,000*		55	
60	75.3	19,550	77.9	19,220*	76.7	19,200*	80.0	15,290*	77.9	17,800*			78.8	16,400*		60	
65	73.8	17,370	76.4	18,120	75.3	17,630	78.6	14,770*	76.5	17,100*			77.5	15,800*		65	
70	72.4	15,560	74.9	16,220	73.9	15,800	77.1	14,300*	75.2	15,980	79.1	11,170*	76.2	15,200*		70	
75	70.8	13,880	73.2	14,500	72.4	14,130	75.6	13,840*	73.8	14,280	77.6	10,800*	74.9	13,980*	79.4	8,900*	75
80	69.3	12,560	71.7	13,090	71.0	12,760	74.1	13,420*	72.4	12,940	76.2	10,490*	73.6	13,050	78.1	8,610*	80
85	67.7	11,390	70.1	11,880	69.5	11,590	72.6	12,450	71.0	11,750	74.8	10,180*	72.3	11,860	76.7	8,350*	85
90	66.2	10,360	68.6	10,820	68.1	10,560	71.1	11,370	69.6	10,690	73.4	9,890*	71.0	10,800	75.4	8,110*	90
95	64.5	9,390	66.9	9,810	66.5	9,560	69.5	10,330	68.2	9,720	71.9	9,610*	69.5	9,810	73.9	7,870*	95
100	62.9	8,590	65.2	8,970	65.0	8,750	68.0	9,470	66.7	8,880	70.4	9,360*	68.2	8,970	72.5	7,640*	100
105	61.3	7,870	63.6	8,220	63.5	8,020	66.4	8,680	65.3	8,150	68.9	8,970	66.8	8,220	71.1	7,450*	105
110	59.7	7,200	61.9	7,530	61.9	7,360	64.8	8,000	63.9	7,470	67.4	8,240	65.5	7,560	69.7	7,250*	110
115	57.9	6,560	60.1	6,870	60.3	6,720	63.1	7,310	62.3	6,830	65.8	7,560	64.0	6,920	68.2	7,050*	115
120	56.2	6,040	58.3	6,300	58.7	6,170	61.5	6,720	60.8	6,280	64.3	6,960	62.6	6,340	66.7	6,900*	120
125	54.4	5,550	56.5	5,790	57.0	5,680	59.8	6,190	59.3	5,770	62.7	6,410	61.1	5,860	65.2	6,610	125
130	52.6	5,070	54.7	5,310	55.4	5,220	58.1	5,700	57.7	5,310	61.1	5,930	59.7	5,370	63.7	6,100	130
135	50.8	4,560	52.8	4,850	53.7	4,730	56.4	5,260	56.1	4,870	59.5	5,460	58.2	4,960	62.2	5,640	135
140	48.8	4,070			51.8	4,230	54.4	4,820	54.4	4,360	57.7	5,000	56.6	4,450	60.5	5,180	140
145	46.9	3,650			50.1	3,810	52.6	4,360	52.8	3,920	56.0	4,620	55.1	4,010	58.9	4,780	145
150	44.8	3,280			48.2	3,410			51.1	3,520	54.2	4,160	53.5	3,610	57.3	4,380	150
155	42.7	2,930			46.3	3,060			49.3	3,150	52.4	3,760	51.9	3,240	55.6	3,960	155
160	40.4	2,570			44.2	2,680			47.4	2,790			50.2	2,860	53.8	3,540	160
165													48.5	2,530	52.0	3,170	165
Reeves	2		2		2		1		2		2		2		1		Reeves

Note: Designed and rated to comply with ANSI Code B30.5.

Capacities based on factors other than machine stability such as structural competence are shown by asterisk * in the charts.

Refer to notes P10.



Fixed Jib Lifting Capacity

Unit: lbs

Counterweight: 57,800 lbs, Carbody weight: 14,300 lbs

180' Boom

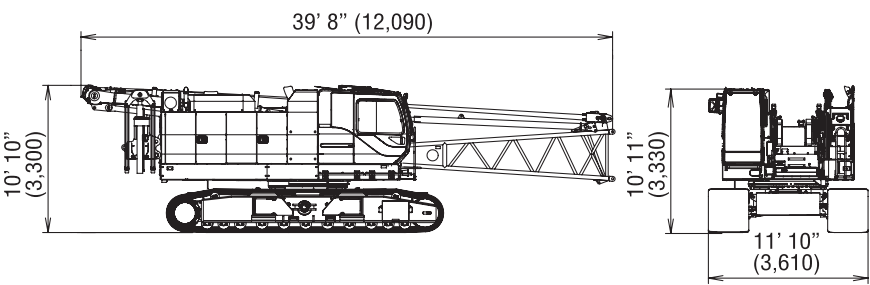
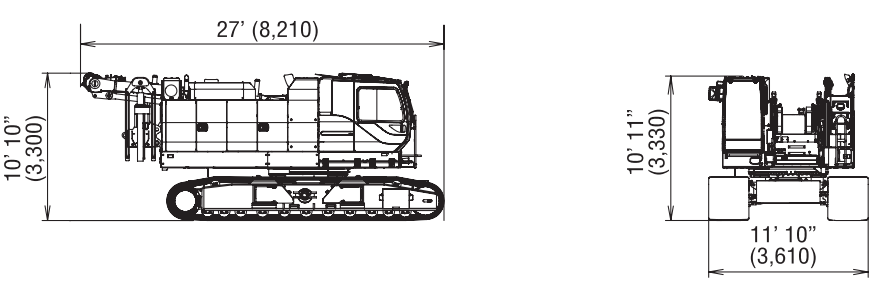
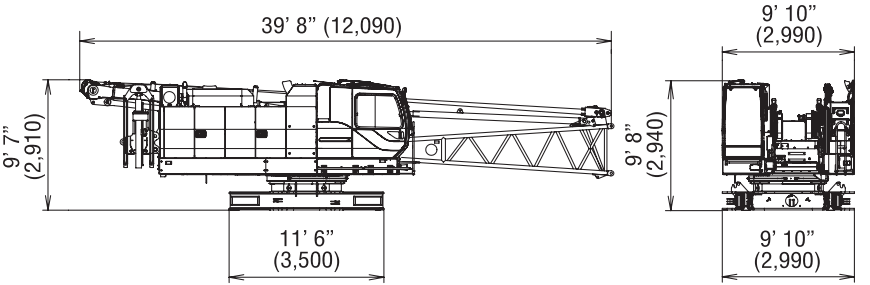
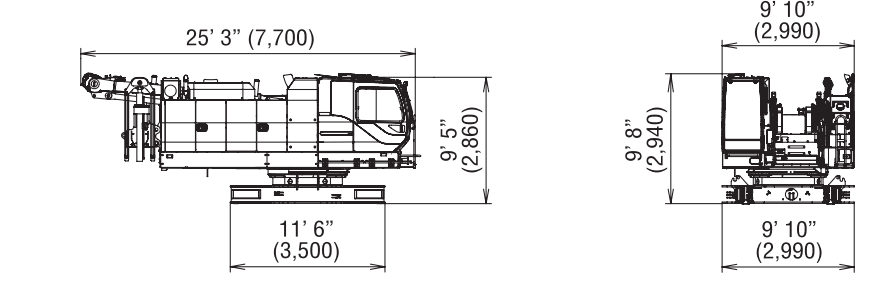
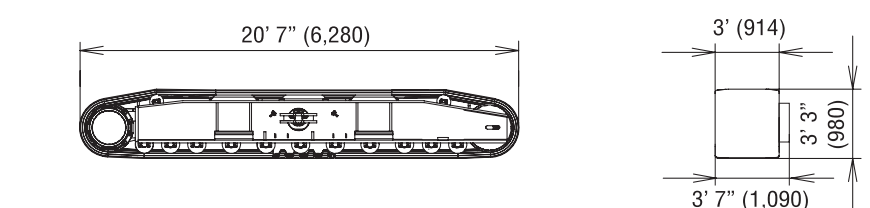
Load Radius (ft)	30 ft Jib				40 ft Jib				50 ft Jib				60 ft Jib				Load Radius (ft)
	Offset Angle (deg.)		Offset Angle (deg.)		Offset Angle (deg.)		Offset Angle (deg.)		Offset Angle (deg.)		Offset Angle (deg.)		Offset Angle (deg.)				
	10		30		10		30		10		30		10		30		
	Boom Angle (deg.)	Rated Load (lbs)	Boom Angle (deg.)	Rated Load (lbs)	Boom Angle (deg.)	Rated Load (lbs)	Boom Angle (deg.)	Rated Load (lbs)	Boom Angle (deg.)	Rated Load (lbs)	Boom Angle (deg.)	Rated Load (lbs)	Boom Angle (deg.)	Rated Load (lbs)	Boom Angle (deg.)	Rated Load (lbs)	
50	78.9	19,770*															50
55	77.4	19,240*	79.9	19,060*	78.7	18,500*			79.7	17,000*							55
60	76.0	18,760*	78.5	18,580*	77.3	17,800*			78.4	16,400*			79.3	15,000*			60
65	74.6	17,190	77.1	17,960	76.0	17,100*	79.1	14,740*	77.1	15,800*			78.0	14,500*			65
70	73.2	15,360	75.6	16,070	74.7	15,630	77.7	14,460*	75.9	15,200*	79.6	11,300*	76.8	14,000*			70
75	71.7	13,710	74.1	14,350	73.2	13,950	76.3	14,020*	74.5	13,980*	78.2	10,930*	75.5	13,500*	79.9	8,990*	75
80	70.3	12,360	72.6	12,940	71.9	12,580	74.9	13,580	73.2	12,760	76.9	10,600*	74.3	12,870	78.6	8,700*	80
85	68.8	11,190	71.2	11,720	70.5	11,410	73.5	12,320	71.9	11,570	75.5	10,310*	73.0	11,680	77.3	8,460*	85
90	67.4	10,180	69.7	10,640	69.1	10,360	72.1	11,220	70.6	10,510	74.2	10,030*	71.8	10,620	76.0	8,200*	90
95	65.8	9,190	68.1	9,630	67.6	9,390	70.5	10,180	69.2	9,520	72.7	9,740*	70.4	9,630	74.6	7,950*	95
100	64.3	8,390	66.5	8,790	66.2	8,570	69.1	9,320	67.8	8,700	71.4	9,500*	69.2	8,790	73.3	7,760*	100
105	62.8	7,670	65.0	8,040	64.8	7,820	67.6	8,550	66.5	7,950	70.0	8,810	67.9	8,040	72.0	7,530*	105
110	61.3	7,010	63.4	7,360	63.3	7,160	66.1	7,840	65.1	7,290	68.5	8,110	66.6	7,360	70.7	7,360*	110
115	59.6	6,370	61.7	6,670	61.8	6,520	64.5	7,160	63.6	6,630	67.0	7,400	65.2	6,720	69.2	7,160*	115
120	58.0	5,840	60.1	6,120	60.3	5,970	63.0	6,560	62.2	6,080	65.6	6,810	63.8	6,170	67.8	7,010*	120
125	56.4	5,310	58.4	5,590	58.8	5,460	61.4	6,040	60.8	5,570	64.1	6,260	62.5	5,660	66.4	6,480	125
130	54.7	4,780	56.7	5,110	57.2	4,960	59.8	5,550	59.3	5,090	62.6	5,770	61.1	5,180	65.0	5,970	130
135	53.0	4,270	55.0	4,580	55.6	4,450	58.2	5,090	57.8	4,580	61.1	5,310	59.7	4,670	63.6	5,480	135
140	51.2	3,790	53.1	4,070	53.9	3,940	56.4	4,580	56.2	4,070	59.4	4,850	58.2	4,160	62.0	5,020	140
145	49.4	3,370	51.3	3,610	52.3	3,520	54.7	4,120	54.7	3,630	57.8	4,380	56.8	3,720	60.5	4,620	145
150	47.6	2,970			50.6	3,130	53.0	3,680	53.1	3,240	56.2	3,940	55.3	3,320	59.0	4,160	150
155	45.7	2,600			48.8	2,750			51.5	2,860	54.5	3,520	53.8	2,930	57.5	3,740	155
160											52.7	3,100	52.2	2,550	55.8	3,320	160
165															54.1	2,950	165
170															52.4	2,600	170
Reeves	2		2		2		1		1		1		1		1		Reeves

Note: Designed and rated to comply with ANSI Code B30.5.

Capacities based on factors other than machine stability such as structural competence are shown by asterisk * in the charts.

Refer to notes P10.

TRANSPORTATION PLAN

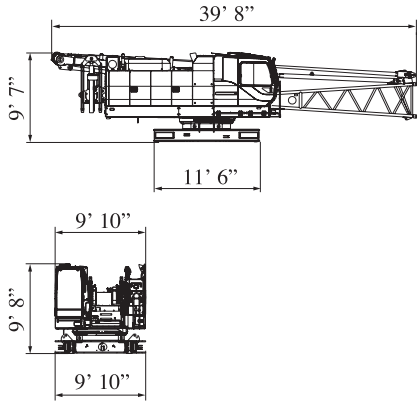
Name	Dimension ft-in (mm)	Weight lbs (kg)
Base Machine <ul style="list-style-type: none"> • Boom base • Gantry • Crawler • Wire rope (Front / boom hoist) 		91,677 (41,580)
Base Machine <ul style="list-style-type: none"> • Gantry • Crawler • Wire rope (Front / rear / boom hoist) 		87,434 (39,660)
Base Machine <ul style="list-style-type: none"> • Boom base • Gantry • Wire rope (Front / rear / boom hoist) • Without crawler 		57,981 (26,330)
Base Machine <ul style="list-style-type: none"> • Gantry • Wire rope (Front / rear / boom hoist) • Without crawler 		53,748 (24,380)
Crawler		16,843 (7,640)

PARTS AND ATTACHMENTS

Dimensions: ft Weight: lbs

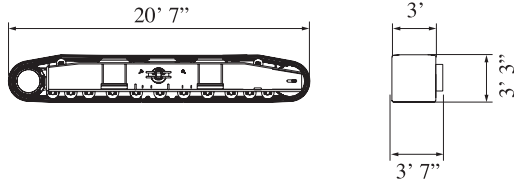
Base Machine

Gantry, Wire rope (Front/rear/boom hoist),
Without crawler
Weight: 57,981 lbs Width: 9' 10"



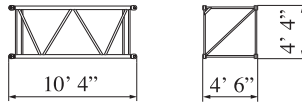
Crawler

Weight: 16,843 lbs



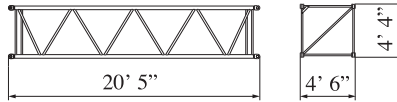
10 ft Insert Boom

Weight: 590 lbs



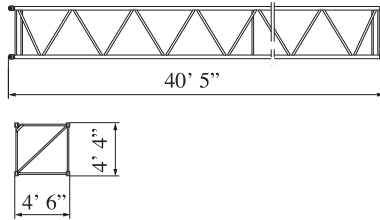
20 ft Insert Boom

Weight: 1,025 lbs



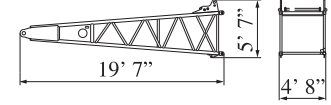
40 ft Insert Boom

Weight: 1,896 lbs



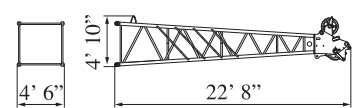
Boom Base

Weight: 2,326 lbs



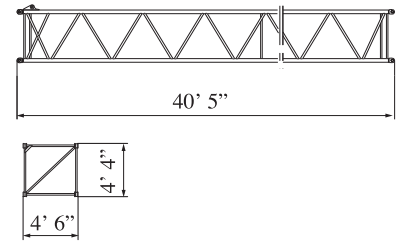
Boom Tip

Weight: 2,227 lbs



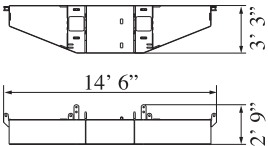
40 ft Insert Boom with lug

Weight: 1,929 lbs



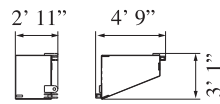
Counterweight No.1

Weight: 20,550 lbs



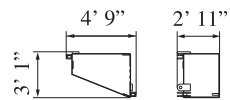
Counterweight No.2, No.3 (R)

Weight: 9,260 lbs



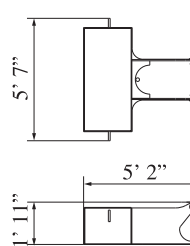
Counterweight No.2, No.3 (L)

Weight: 9,260 lbs



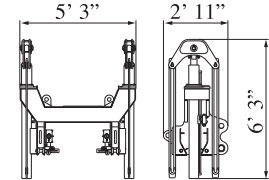
Carbodyweight

Weight: 7,165 lbs



Self removal unit

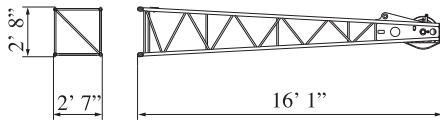
Weight: 1,896 lbs



Dimensions: ft Weight: lbs

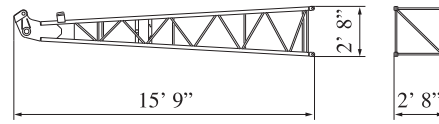
Jib Tip

Weight: 485 lbs



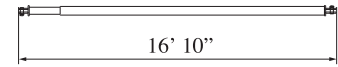
Jib Base

Weight: 440 lbs



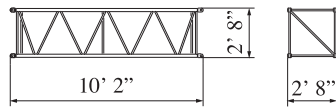
Backstop

Weight: 595 lbs



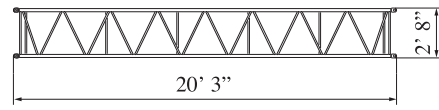
10 ft Insert Jib

Weight: 210 lbs



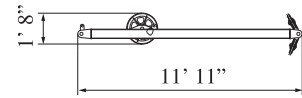
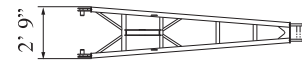
20 ft Insert Jib

Weight: 390 lbs



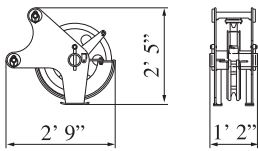
Jib Strut

Weight: 456 lbs



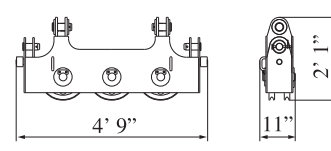
Auxiliary Sheave

Weight: 320 lbs



Upper Spreader

Weight: 514 lbs



Note: This catalog may contain photographs of machines with specifications, attachments and optional equipment not certified for operation in your country. Please consult KOBELCO for those items you may require. Due to our policy of continual product improvements all designs and specifications are subject to change without advance notice.

Copyright by KOBELCO CRANES CO., LTD. No part of this catalog may be reproduced in any manner without notice.

KOBELCO CRANES CO., LTD.

17-1, Higashigotanda 2-chome, Shinagawa-ku, Tokyo 141-8626 JAPAN

Tel: +81-3-5789-2130 Fax: +81-3-5789-3372

URL: <http://www.kobelco-cranes.com/>

Inquiries To :

KOBELCO CRANES NORTH AMERICA, INC.

10845 Train Court, Houston, Texas 77041, USA

Tel: +1-713-856-5755 Fax: +1-713-856-9072

URL: <http://www.kobelcocranesnorthamerica.com/>