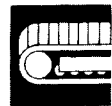


LOWER MACHINERY

CARBODY: Carbody of alloy steel welded construction with integral seat for bolt-on axles. Crawler frames shear ledge mounted and bolted to ends of axles.



CRAWLERS AND CRAWLER DRIVE: Independent travel. Driving tumblers on end of crawlers exert driving force against lug cast integral with crawler shoes. 15 lower rollers in each frame with double rolling surfaces and deep center guide. Crawler belt and propel chain tension maintained by application of manual hydraulic jack force on track adjusting bearing block and insertion of proper shimming.

STEERING MECHANISM: Sliding jaw clutches, engaging each end of horizontal propel shaft center section, control application of propelling power to crawlers. Both sliding jaw clutches are hydraulically locked to spring set propel brakes independently. Two 1,016 mm (40") diameter spring set hydraulically released V-type propel brakes remain set during engagement of jaw clutches.

CRAWLER SHOES: Total number—each side 126
 Cast flat shoes —Standard width 1,220 mm (48")
 —optional width 1,520 mm (60")

TRAVEL SPEED:
 Lo-speed 1.0 km/h (0.62 mph)
 Hi-speed 1.9 km/h (1.18 mph)

GRADEABILITY: 20% max. grade recommended for travel.

CRANE ATTACHMENTS



HEAVY DUTY BOOM: Tubular T-1 steel, lattice construction, pin connected. Open throat cross section 2,390 mm square (94" sq.) with 6 boom point sheaves on tapered tip mounted on antifriction bearings. Boom extendible to 73.15 m (240').

Basic length, two sections 21.34 m (70')
 Boom base section 12.19 m (40')
 Boom top section 9.14 m (30')

LIGHT DUTY BOOM: Tubular T-1 steel, lattice construction, pin connected. Open throat, cross section 2,390 mm square (94" sq.) with 3 boom point sheaves on tapered tip mounted on antifriction bearings. Boom extendible to 97.54 m (320').

Basic length, two sections 21.34 m (70')
 Boom base section 12.19 m (40')
 Boom tip section (optional) 9.14 m (30')

ULTRA HEAVY DUTY BOOM: Tubular T-1 steel, lattice construction, pin connected. Open throat, cross section 2,390 mm square (94" sq.) with 9 boom point sheaves on tapered tip mounted on antifriction bearings. Boom extendible to 73.15 m (240').

Boom length, two sections 21.34 m (70')
 Boom base section 12.19 m (40')
 Boom tip section (optional) 9.14 m (30')

BOOM INSERT SECTIONS (OPTIONAL): 3.05 m (10'), 6.10 m (20'), 9.14 m (30') and 15.24 m (50') boom insert available.

JIB (OPTIONAL): Tubular T-1 steel, lattice construction, pin connected. Extendible to 24.34 m (80').

Basic length, two equal sections 9.14 m (30')
 Jib cross section 1,070 mm square (42" sq.) with 1 boom point sheave on antifriction bearings. Jib boom can not be extended on ultra heavy duty tip.

JIB INSERT SECTIONS (OPTIONAL): 3.05 m (10'), 6.10 m (20') and 9.14 m (30') jib boom insert available.

BOOM HOIST REEVING: 16 parts of balanced line—spreader sheaves mounted on antifriction bearings

GUY CABLE: Boom guy cable, four, 38 mm (1.5") dia. Jib guy cable, two, 30 mm (1.18") dia.



HOOK BLOCK FOR MAIN BOOM: 90 metric ton 3 sheave swivel hook. 180 metric ton 6 sheave swivel hook. 270 metric ton 9 sheave swivel hook. (Optional)

HOOK BLOCK FOR JIB: 13.5 metric ton weighted ball hook, single part line. 25 metric ton single sheave swivel hook. (Optional)

POWER CONTROLLED LOAD LOWERING: Planetary gear type power lowering with external contracting clutch band.

MAST (REQUIRED FOR ALL BOOMS): Fabricated T-1 steel, 2 rectangular legs of box section cross laced design 13.72 m (45') long.

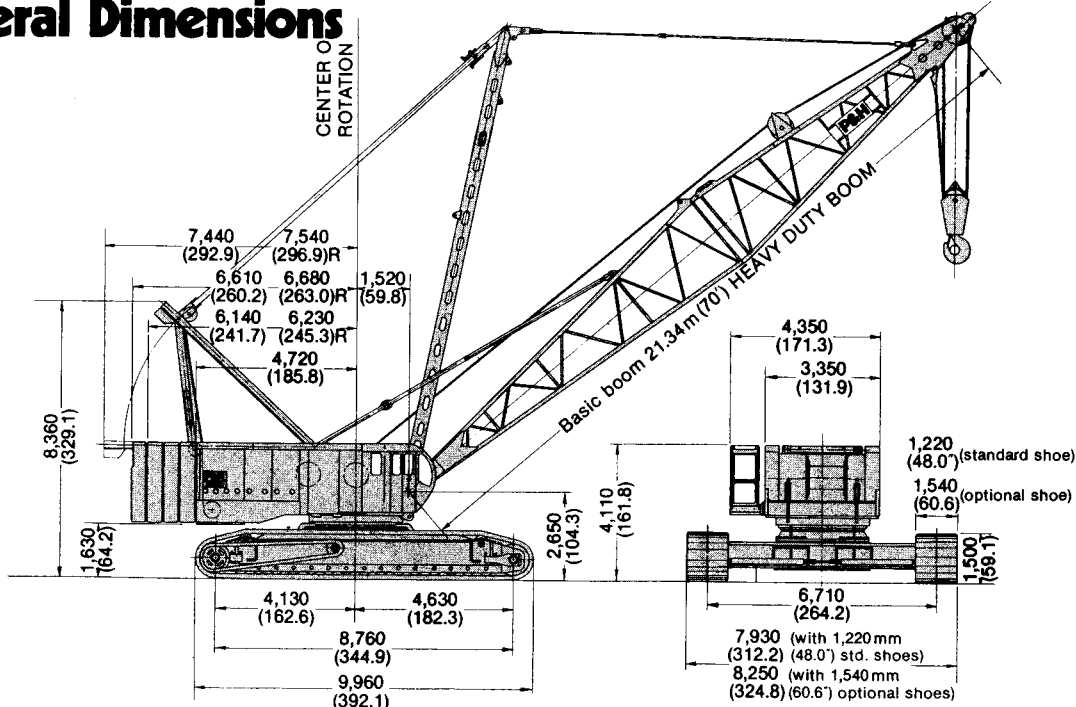
WORKING WEIGHT: Approx. 231,000 kg (509,300 lbs.) [Machine consists of: Upper, 3 counterweights, module, 21.34 m (70') heavy duty boom, mast, 34 mm (1.34") dia. hoist cable, 6 sheave hook block, 26 mm (1") dia. jib hoist cable.]

GROUND PRESSURES

Shoe Width	1,220 mm (48")	1,520 mm (60")
kg/cm ² (lbs. per sq. in.)	1.03 (14.53)	0.82 (11.67)

General Dimensions

Unit: mm (in)

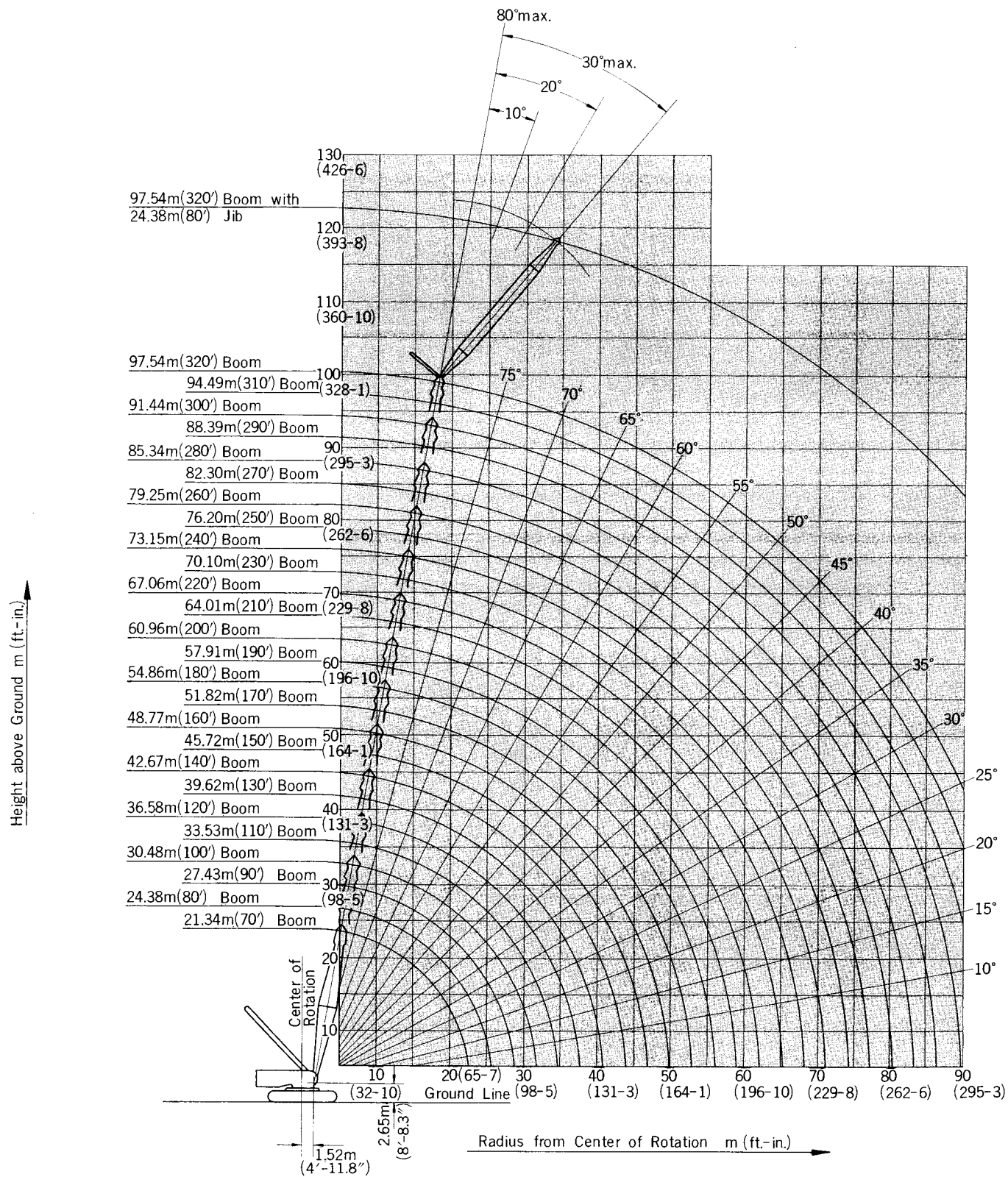


270-M ton Crawler Crane

97.54m Boom

97.54m Boom + 24.34m Jib

Working Ranges



Lifting Capacities

RATED CRANE LOADS IN KG (LBS.)—ULTRA HEAVY DUTY BOOM IN 360° WORK AREA

Operating Radius in Meters (Ft.-In.)	21.34 m (70') Boom			24.38 m (80') Boom			27.43 m (90') Boom			30.48 m (100') Boom			33.53 m (110')	
	Angle	Boom Pt. El.	Rating	Angle	Boom Pt. El.	Rating	Angle	Boom Pt. El.	Rating	Angle	Boom Pt. El.	Rating	Angle	Boom Pt. El.
5.6 (18-4)	79	23.6 (77.5)	270,000 (595,000)											
6.0 (19-8)	78	23.5 (77.2)	250,000 (551,000)											
7.0 (23-0)	75	23.3 (76.4)	212,000 (467,400)	77	26.4 (86.8)	210,000 (463,000)								
8.0 (26-3)	73	23.0 (75.5)	178,500 (393,500)	75	26.2 (85.1)	178,000 (392,400)	77	29.3 (96.2)	177,500 (391,300)					
9.0 (29-6)	70	22.6 (74.3)	148,400 (327,200)	72	25.9 (84.1)	148,300 (326,900)	74	29.0 (95.3)	148,200 (326,700)	76	32.2 (105.8)	148,100 (326,500)	77	35.3 (115.11)
10.0 (32-10)	67	22.2 (72.11)	124,400 (274,300)	70	25.5 (83.8)	124,300 (274,000)	72	28.7 (94.4)	124,200 (273,800)	74	31.9 (104.9)	124,100 (273,600)	76	35.1 (115.2)
12.0 (39-4)	61	21.2 (69.8)	94,200 (207,700)	65	24.7 (80.11)	94,100 (207,500)	68	28.0 (91.1)	94,000 (207,200)	70	31.3 (102.7)	93,900 (207,000)	72	34.5 (113.2)
14.0 (45-11)	54	20.0 (65.6)	74,700 (164,700)	59	23.6 (77.5)	74,700 (164,700)	63	27.1 (88.1)	74,600 (164,500)	66	30.5 (99.11)	74,500 (164,200)	68	33.8 (110.10)
16.0 (52-6)	47	18.3 (60.1)	62,300 (137,300)	54	22.3 (73.1)	62,200 (137,100)	58	25.9 (85.2)	62,000 (136,700)	62	29.5 (96.8)	61,800 (136,200)	65	32.9 (107.11)
18.0 (59-1)	40	16.2 (53.2)	52,800 (116,400)	48	20.6 (67.8)	52,700 (116,200)	53	24.6 (80.8)	52,500 (115,700)	57	28.3 (92.10)	52,300 (115,300)	61	31.9 (104.6)
20.0 (65-7)	30	13.3 (43.8)	45,700 (100,800)	41	18.6 (60.10)	45,600 (100,500)	48	22.9 (75.2)	45,400 (100,100)	53	26.9 (88.3)	45,300 (99,900)	57	30.6 (100.6)
25.0 (82-0)							31	16.8 (55.3)	33,500 (73,900)	40	22.1 (72.6)	33,300 (73,400)	46	26.6 (87.3)
30.0 (98-5)										21	13.5 (44.4)	25,900 (57,100)	32	20.3 (66.9)
35.0 (114-10)														
40.0 (131-3)														
45.0 (147-8)														

Operating Radius in Meters (Ft.-In.)	48.77 m (160') Boom			51.82 m (170') Boom			54.86 m (180') Boom			57.91 m (190') Boom			60.96 m (200')	
	Angle	Boom Pt. El.	Rating	Angle	Boom Pt. El.	Rating	Angle	Boom Pt. El.	Rating	Angle	Boom Pt. El.	Rating	Angle	Boom Pt. El.
14.0 (45-11)	75	49.8 (163.5)	73,500 (162,000)	76	52.9 (173.8)	73,200 (161,400)	77	56.1 (184.0)	73,000 (160,900)	78	59.2 (194.3)	72,700 (160,300)	78	62.3 (204.6)
16.0 (52-6)	73	49.2 (161.6)	60,700 (133,800)	74	52.4 (171.11)	60,500 (133,400)	75	55.6 (182.4)	60,400 (133,200)	76	58.7 (192.8)	60,200 (132,700)	76	61.9 (203.0)
18.0 (59-1)	70	48.6 (159.3)	51,200 (112,900)	72	51.8 (169.11)	51,000 (112,400)	73	55.0 (180.4)	50,900 (112,200)	74	58.2 (190.10)	50,700 (111,800)	75	61.3 (201.3)
20.0 (65-7)	68	47.8 (156.9)	44,300 (97,700)	69	51.1 (167.6)	44,100 (97,200)	71	54.3 (178.2)	44,000 (97,000)	72	57.5 (188.9)	43,800 (96,600)	73	60.7 (199.3)
25.0 (82-0)	61	45.4 (148.11)	32,100 (70,800)	63	48.8 (160.3)	31,900 (70,300)	65	52.2 (171.4)	31,800 (70,100)	66	55.6 (182.5)	31,600 (69,700)	68	58.9 (193.3)
30.0 (98-5)	54	42.2 (138.7)	24,800 (54,700)	57	45.9 (150.9)	24,600 (54,200)	59	49.1 (161.1)	24,500 (54,000)	61	53.1 (174.2)	24,300 (53,600)	62	56.5 (185.6)
35.0 (114-10)	47	38.1 (125.1)	19,400 (42,800)	50	42.2 (138.6)	19,400 (42,800)	53	46.1 (151.3)	19,300 (42,500)	55	49.9 (163.9)	19,100 (42,100)	57	53.6 (175.10)
40.0 (131-3)	38	32.6 (107.0)	15,800 (34,800)	42	37.4 (122.7)	15,600 (34,400)	46	41.8 (137.0)	15,500 (34,200)	49	45.9 (150.8)	15,200 (33,500)	51	49.9 (163.10)
45.0 (147-8)	27	24.7 (81.2)	13,000 (28,700)	33	30.8 (101.2)	12,700 (28,000)	38	36.1 (118.5)	12,500 (27,600)	42	40.9 (134.2)	12,300 (27,100)	45	45.4 (148.11)
50.0 (164-1)				21	21.0 (68.9)	10,700 (23,600)	28	28.3 (92.11)	10,500 (23,100)	33	34.3 (112.7)	10,300 (22,700)	38	39.6 (129.11)
55.0 (180-5)										23	24.9 (81.7)	8,700 (19,200)	29	31.9 (104.8)
60.0 (196-10)													16	19.9 (65.2)
65.0 (213-3)														

- Operating radius is the horizontal distance from centerline of rotation to a vertical line through the centerline of gravity of the load.
- Ratings shown do not exceed 78% of tipping load. Deduct weight of hook block(s), slings, and all other load handling accessories from main boom rating shown.
- Ratings shown are based on freely suspended loads, machine standing on firm, level, uniformly supporting surface

- and make no allowance for such factors as wind effect on lifted load, ground conditions, out-of-level, operating speeds or any other condition that could be detrimental to the safe operation of this equipment. The operator, therefore, has the responsibility to judge the existing conditions and reduce lifted loads and operating speeds accordingly.
- At radii and boom length where no ratings are shown on plate operation is not intended or approved.

36.58 m (120') Boom				39.62 m (130') Boom				42.67 m (140') Boom				45.72 m (150') Boom				Operating Radius in Meters (Ft.-in.)
Rating	Angle	Boom Pt. El.	Rating	Angle	Boom Pt. El.	Rating	Angle	Boom Pt. El.	Rating	Angle	Boom Pt. El.	Rating	Angle	Boom Pt. El.	Rating	
																5.6 (18-4)
																6.0 (19-8)
																7.0 (23-0)
																8.0 (26-3)
																9.0 (29-6)
148,000 (26,300)																10.0 (32-10)
124,000 (273,400)	77	38.2* (125-5)	123,900 (273,200)													
93,600 (206,400)	74	37.7 (123-8)	93,500 (206,100)	75	40.9 (134-1)	93,400 (205,900)	76	44.0 (144-5)	93,300 (205,700)	77	47.2 (154-8)	93,200 (205,500)				12.0 (39-4)
74,200 (163,600)	70	37.0 (121-6)	74,100 (163,400)	72	40.3 (132-1)	74,100 (163,400)	73	43.5 (142-7)	74,000 (163,100)	74	46.6 (153-0)	73,800 (162,700)				14.0 (45-11)
61,600 (135,800)	67	33.6 (110-3)	61,400 (135,400)	69	39.5 (129-8)	61,300 (135,100)	70	42.8 (140-5)	61,200 (134,900)	72	46.0 (151-0)	61,000 (134,500)				16.0 (52-6)
52,100 (114,900)	63	35.3 (115-10)	51,900 (114,400)	66	38.7 (126-11)	51,800 (114,200)	67	42.0 (137-10)	51,700 (114,000)	69	45.3 (148-7)	51,500 (113,500)				18.0 (59-1)
45,000 (99,200)	60	34.2 (112-3)	44,800 (98,800)	62	37.7 (123-8)	44,700 (98,500)	65	41.1 (134-11)	44,600 (98,300)	66	44.5 (145-11)	44,500 (98,100)				20.0 (65-7)
33,000 (27,800)	50	30.7 (100-9)	32,900 (72,500)	54	34.6 (113-5)	32,800 (72,300)	57	38.3 (125-7)	32,700 (72,100)	59	41.8 (137-5)	32,400 (71,400)				25.0 (82-0)
25,600 (56,400)	39	25.6 (84-0)	25,400 (56,000)	44	30.2 (99-1)	25,300 (55,800)	48	34.4 (112-11)	25,200 (55,600)	52	38.4 (126-0)	25,000 (55,100)				30.0 (98-5)
	24	17.4 (57-1)	20,400 (25,000)	33	23.8 (78-2)	20,300 (44,800)	39	29.1 (95-6)	20,100 (44,300)	43	33.8 (110-10)	19,900 (43,900)				35.0 (114-10)
																40.0 (131-3)
																45.0 (147-8)

64.01 m (210') Boom				67.06 m (220') Boom				70.10 m (230') Boom				73.15 m (240') Boom				Operating Radius in Meters (Ft.-in.)
Rating	Angle	Boom Pt. El.	Rating	Angle	Boom Pt. El.	Rating	Angle	Boom Pt. El.	Rating	Angle	Boom Pt. El.	Rating	Angle	Boom Pt. El.	Rating	
72,500 (159,800)																14.0 (45-11)
60,100 (132,500)	77	65.0 (213-3)	59,900 (132,100)	78	68.1 (233-6)	59,700 (131,600)	78	71.2 (233-9)	59,500 (131,200)	79	74.4 (243-11)	59,400 (131,000)				16.0 (52-6)
50,600 (111,600)	75	64.5 (211-7)	50,400 (111,100)	76	67.7 (222-0)	50,200 (110,700)	77	70.8 (232-3)	50,000 (110,200)	77	73.9 (242-6)	49,900 (110,000)				18.0 (59-1)
43,600 (96,100)	73	63.9 (209-9)	43,400 (95,700)	74	67.1 (220-2)	43,200 (95,200)	75	70.3 (230-7)	43,000 (94,800)	76	73.4 (240-11)	42,900 (94,600)				20.0 (65-7)
31,500 (69,400)	69	62.4 (204-1)	31,300 (69,000)	70	65.5 (214-9)	31,100 (68,600)	71	68.7 (225-5)	30,900 (68,100)	71	71.9 (236-0)	30,800 (67,900)				25.0 (82-0)
24,200 (53,400)	64	60.0 (196-9)	24,000 (52,900)	65	63.4 (207-11)	23,800 (52,500)	66	66.7 (218-11)	23,600 (52,000)	67	70.0 (229-9)	23,500 (51,800)				30.0 (98-5)
18,900 (41,700)	59	57.2 (187-8)	18,700 (41,200)	60	60.8 (199-4)	18,500 (40,800)	62	64.2 (210-9)	18,300 (40,300)	63	67.7 (222-1)	18,200 (40,100)				35.0 (114-10)
15,100 (33,300)	53	53.8 (176-6)	14,900 (32,800)	55	57.6 (188-11)	14,700 (32,400)	57	61.2 (200-11)	14,500 (32,000)	58	64.9 (212-10)	14,400 (31,700)				40.0 (131-3)
12,100 (26,700)	47	50.3 (164-11)	11,900 (26,200)	50	53.7 (176-2)	11,700 (25,800)	52	57.6 (189-1)	11,500 (25,400)	54	61.5 (201-8)	11,400 (25,100)				45.0 (147-8)
10,100 (22,300)	41	44.4 (145-10)	9,800 (21,600)	44	49.0 (160-8)	9,600 (21,200)	46	53.5 (174-10)	9,300 (20,500)	49	57.4 (188-5)	9,200 (20,300)				50.0 (164-1)
8,500 (18,700)	34	37.8 (124-1)	8,200 (18,100)	37	43.8 (143-8)	7,900 (17,400)	40	48.0 (157-5)	7,700 (17,000)	43	52.6 (172-5)	7,600 (16,800)				55.0 (180-5)
7,100 (15,700)	24	26.0 (85-5)	6,800 (15,000)	30	35.5 (116-4)	6,500 (14,300)	34	41.3 (135-6)	6,300 (13,900)	37	46.6 (152-10)	6,100 (13,400)				60.0 (196-10)
				19	25.5 (83-9)	5,400 (11,900)	25	32.4 (106-3)	5,200 (11,500)	30	39.0 (127-11)	5,000 (11,000)				65.0 (213-3)

- Mast required with gantry in intermediate position.
- Boom backstops are required for all boom length.
- Boom insert and guy cables must be arranged as shown in the "Owner and Operator's Manual"
- Boom hoist reeving is 16 part line.
- This rating plate does not apply to light duty tip and heavy duty tip operation.

	Max. Boom Length	Max. Rated Load
Light Duty Boom	97.54 m (320')	90,000 kg (198,400 lbs.)
Heavy Duty Boom	73.15 m (240')	180,000 kg (396,800 lbs.)
Ultra Heavy Duty Boom	73.15 m (240')	270,000 kg (595,000 lbs.)