



TEREX®



TRUCK CRANE
汽车起重机
QY8F/1

DATASHEET METRIC
数据表 (公制)

QY8F/1



WORKS FOR YOU.™

Key · 关键词汇

3

Dimensions and Specifications · 技术参数

Crane Dimensions · 起重机外形尺寸	4
Specifications · 规格参数	5
Range Diagram · 起升高度	6

Load Charts · 起重量表

7

Technical Descriptions · 技术描述

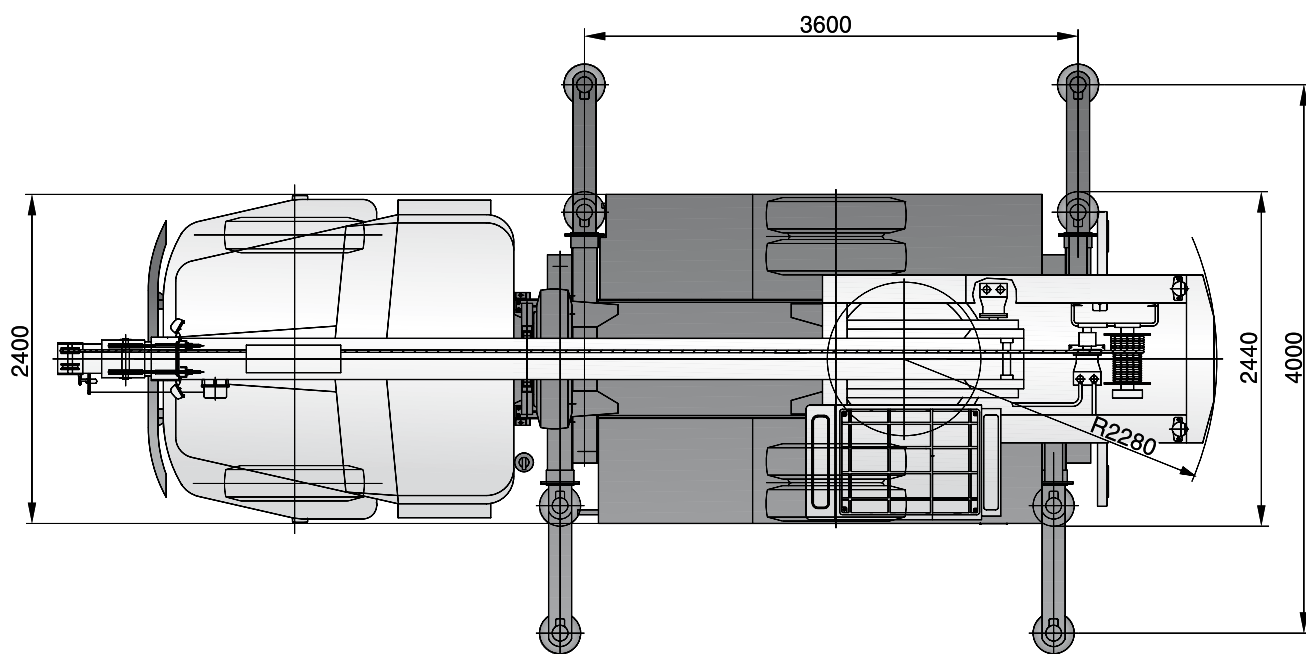
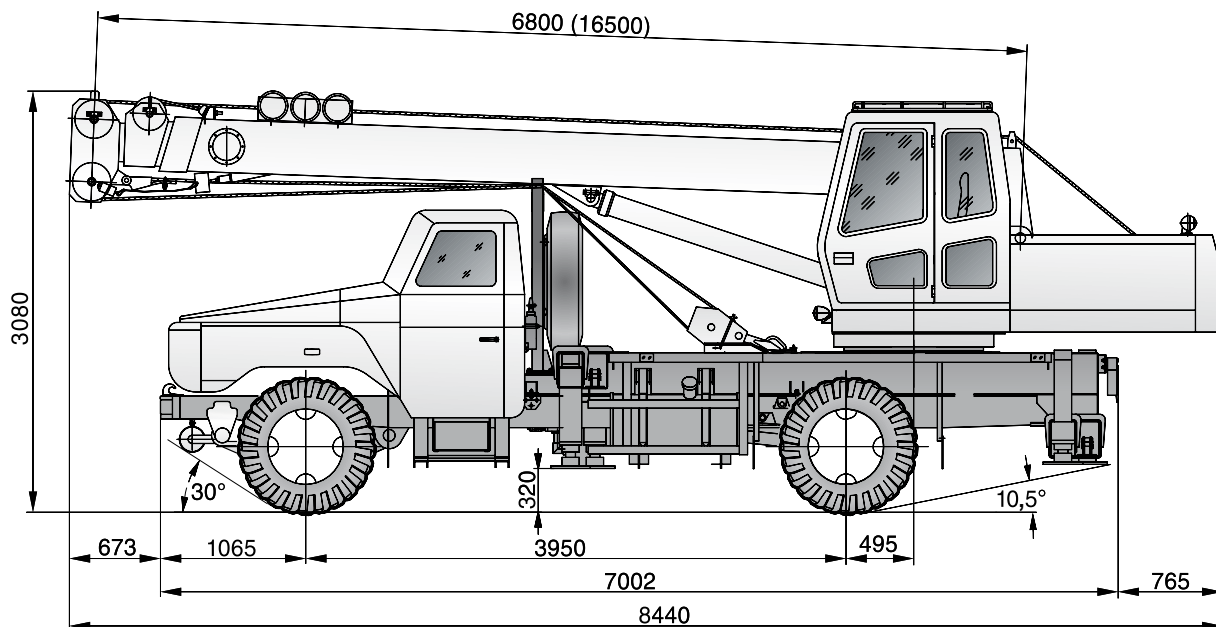
Lifting Capacity · 起重量	8
Boom and Components · 主臂和零件	8
Jib · 副臂	8
Winch Performance · 起升机构工作速度	9
Crane Boom Function Speeds · 起重臂工作速度	9
Outrigger Function Speeds · 支腿工作速度	9
Outrigger Controls · 支腿操纵	9
Engine and Transmission · 发动机和变速箱	10
Hydraulics · 液压系统	10
Chassis and Components · 底盘及其部件	11
Driver Cab · 驾驶室	11
Operator Cab · 操纵室	11



	Counterweight 配重		Main hoist 主起升机构
	Outrigger 支腿		Auxiliary hoist 副起升机构
	Radius 作业半径		Hoist speed 起升速度
	Main boom 主臂		Cab 驾驶室
	Boom length 吊臂长度		Engine 发动机
	Boom with extension 副臂		Steering 转向
	Boom angle 吊臂角度		Travel speed 行驶速度
	Tip height 臂尖高度		Hydraulics 液压装置
	Hook block 吊钩总成		Transmission 变速箱
	Slewing / Allowable swinging range 回转/回转范围		Air conditioning / Cab heating 空调/取暖器
	Working speeds 作业速度		Gradeability – road 爬坡度 – 公路
	Working temperature 作业温度		

CRANE DIMENSIONS 起重机外形尺寸

QY8F/1



TEREX®



SPECIFICATIONS

规格参数

QY8F/1

Crane Weights · 起重机总重量

Gross vehicle weight (GVW) · 车辆总重量 (GVW) 9,695 kg

Axle Loads · 桥负荷

Steering axle (axle 1) · 转向桥 (桥 1) 2,580 kg

Drive axle (axle 2) · 驱动桥 (桥 2) 7,115 kg

Ground Clearances · 通过性参数

Minimum ground clearance · 最小离地间隙 260 mm

Ramp angle · 纵向通过角 20.0°

Approach angle · 接近角 30.0°

Departure angle · 离去角 10.5°

Wheel Base · 轴距

Distance between axle 1 and 2 · 桥 1 和 2 之间的距离 3,950 mm

Wheel Track · 轮距

Axle 1 · 桥 1 1,810 mm

Axle 2 · 桥 2 1,800 mm

Outrigger Dimensions · 支腿跨距

Longitudinal span · 纵向跨距 3.6 m

Transverse span · 横向跨距 4.0 m

Outrigger Forces · 支腿反力

Maximum counterforce · 最大支反力 95.8 kN

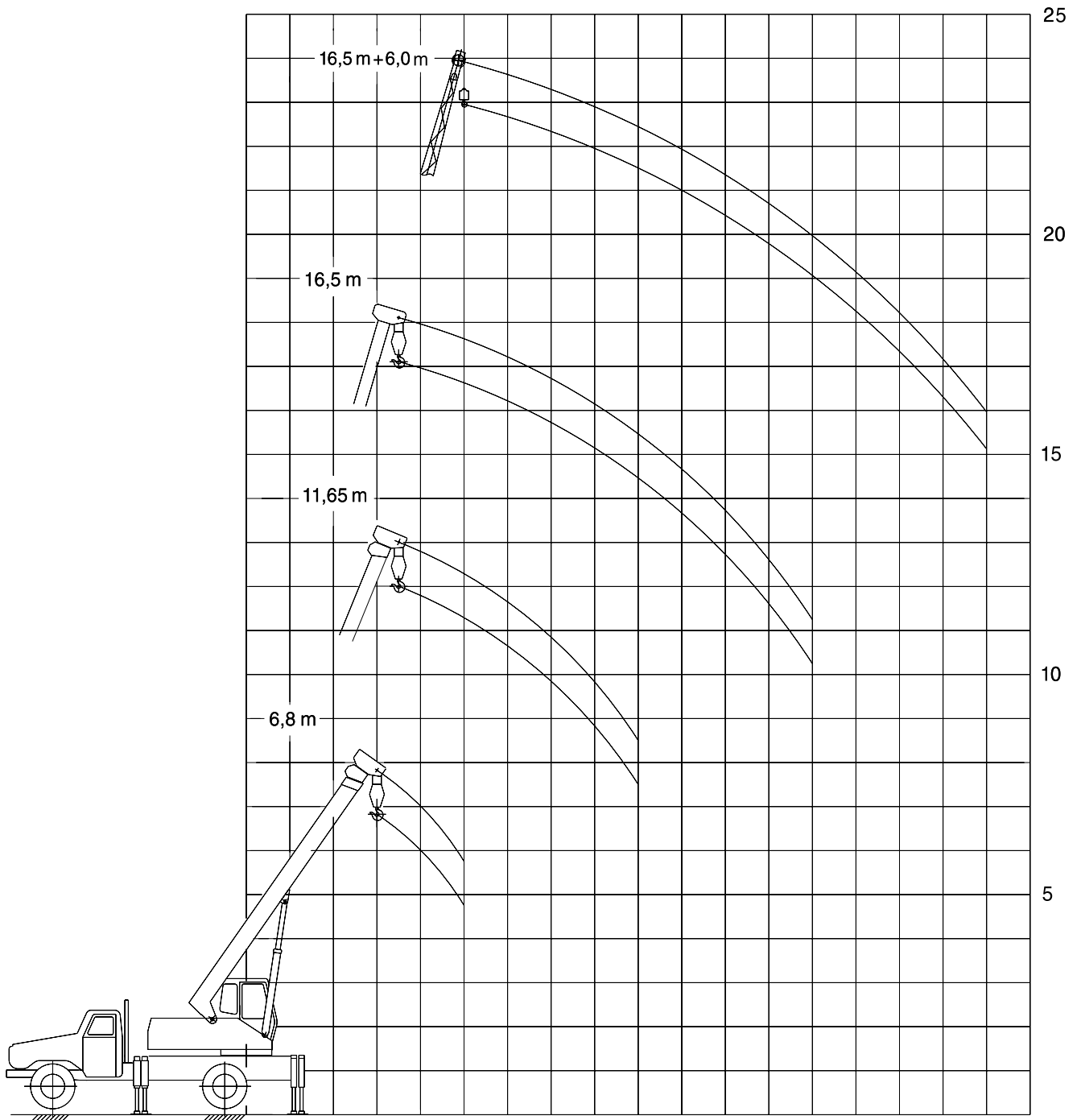
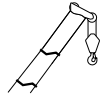
Overall Dimensions · 外形尺寸

(Length x Width x Height) · (长 x 宽 x 高) 8.44 m x 2.44 m x 3.08 m

RANGE DIAGRAM

起升高度

QY8F/1



TEREX®



LOAD CHARTS

起重量表

QY8F/1

Fully extended · 支腿全伸 (100%)				180°			
Basic Boom 6.8 m 基础臂 6.8 m		Half Extended Boom 11.65 m 半伸臂 11.65 m		Fully Extended Boom 16.5 m 全伸臂 16.5 m			
Capacity 起重量	Lifting Height 起升高度	Capacity 起重量	Lifting Height 起升高度	Capacity 起重量	Lifting Height 起升高度		
m	kg	kg	m	kg	m	m	
3	8000	-	7.02	-	-	3	
3.5	6500	4600	6.65	12.20	3200	17.30	3.5
4	5400	4200	6.20	11.99	3000	17.16	4
4.5	4500	3850	5.65	11.75	2800	17.00	4.5
5	4000	3550	4.95	11.40	2600	16.82	5
6	-	2850	-	10.84	2300	16.41	6
7	-	2100	-	10.04	1800	15.92	7
8	-	1700	-	9.02	1500	15.34	8
9	-	1350	-	7.70	1250	14.68	9
10	-	-	-	-	1000	13.86	10
11	-	-	-	-	850	12.92	11
12	-	-	-	-	700	11.80	12
13	-	-	-	-	600	10.44	13
Parts of Line 倍率	4		4		4		Parts of Line 倍率

Notes · 说明

Weight of hook - 80 kg is included in tabulated values.

The tabulated values are rated lifting capacities of level crane when it's standing on a firm supporting surface with outriggers fully extended.

Telescoping boom with load is not allowed.

Values above bold line are based on boom strength while values under bold line are based on its stability.

If the boom length exceeds the specified values, comparing it's capacities with the next longer one's, the load to the lift will be with in the smaller one's.

表中重量包括吊钩重量 80 kg。

表中给定数值是在地面坚实，整机调平状态且支腿全伸时，起重机的额定起重量。

不允许带载伸缩起重臂。

表中粗线以上起重量由强度决定，粗线以下由稳定性决定。


如果臂长超过表中某一栏规定数值时，应把该栏数值与比它更长一级臂长的数值相比较，按照其中较小的额定起重量进行作业。

TECHNICAL DESCRIPTIONS



技术描述

QY8F/1



Lifting Capacity · 起重量

	Maximum rated capacity for main hook 主钩额定起重量	8 t
	Maximum load moment 最大起重力矩	235.2 kN.m

Boom and Components · 主臂和零件

	Profile 截面形状	Quadrangle 四边形
	Number of sections 节数	3
	Base boom length 基本臂长度	6.8 m
	Base boom maximum lift height 基本臂最大起升高度	7.02 m
	Base boom maximum working radius 基本臂最大作业半径	5 m
	Fully extended boom length 全伸臂长度	16.5 m
	Fully extended boom maximum lift height 全伸臂最大起升高度	17.3 m
	Fully extended boom maximum working radius 全伸臂最大作业半径	13 m

Jib · 副臂

	Jib length 副臂长度	6 m
	 Slewing speed 回转速度	3 rpm



TEREX®

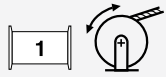


TECHNICAL DESCRIPTIONS

技术描述

QY8F/1

Winch Performance · 起升机构工作速度



Main hoist – 3rd layer – single rope speed
主卷扬 – 第三层 – 单绳速度

0-50 m/min

Crane Boom Function Speeds · 起重臂工作速度



Elevation – up
起臂

16 sec

Elevation – down
落臂

13 sec

Full extension
全伸

21 sec

Full retract
全缩

14 sec

Outrigger Function Speeds · 支腿工作速度



Simultaneous full extension
同步伸出

22 sec

Simultaneous full retract
同步收缩

22 sec

Outrigger Controls · 支腿操纵



Dual outrigger controls – LH and RH side
支腿操纵 – 左侧和右侧

Dual control
两侧操纵



Ambient working temperature
作业温度

-20 °C – +40 °C

TECHNICAL DESCRIPTIONS

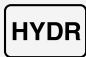
技术描述

QY8F/1

Engine and Transmission · 发动机和变速箱

	Yu chai 玉柴	YC4E140-30
	Emission compliance 排放标准	National Exhaust Standard III 国家排放标准 III
	Number of cylinders 缸数	4
	Aspiration 进气	Turbocharged 涡轮增压
	Rated power 额定功率	105 kW @ 2500 rpm
	Maximum torque 最大扭矩	500 Nm @ 1400 – 1600 rpm
	Estimated fuel consumption per 100 km 100 km 油耗	18 L
	Fuel type 燃油类型	Diesel 柴油
	Fuel tank capacity 燃油箱容积	160 L
	Manual gearbox 手动变速箱	Manual 手动

Hydraulics · 液压装置

	Combined system with dual pump 带有双泵的组合系统	Double pump 双泵
	Hydraulic controls: 液压控制: Mechanical, multi-lever controls 机械式, 多杆控制	Mechanical lever 机械杆



TEREX®



Chassis and Components · 底盘及其部件

	Axle drive system 桥驱动系统	4 x 2
	Minimum turning radius 最小转弯半径	8 m
	Maximum gradeability 最大爬坡度	30 %
	Maximum traveling speed 最高行驶速度	85 km/h

Driver Cab · 驾驶室

	Dong Feng truck cab 东风卡车驾驶室
	Adjustable driver seat 可调式司机座椅
	Fitted with heater 加热器

Operator Cab · 操纵室

	Adjustable seat 可调式座椅
	Ergonomically placed switches and gauges 开关和仪表的布置符合人机工程学
	Recirculation fan 循环风扇

www.terexcranes.com

Effective Date: August 2010. Product specifications and prices are subject to change without notice or obligation. The photographs and/or drawings in this document are for illustrative purposes only. Refer to the appropriate Operator's Manual for instructions on the proper use of this equipment. Failure to follow the appropriate Operator's Manual when using our equipment or to otherwise act irresponsibly may result in serious injury or death. The only warranty applicable to our equipment is the standard written warranty applicable to the particular product and sale and Terex makes no other warranty, express or implied. Products and services listed may be trademarks, service marks or trade-names of Terex Corporation and/or its subsidiaries in the USA and other countries. All rights are reserved. Terex® is a registered trademark of Terex Corporation in the USA and many other countries. Copyright 2010 Terex Corporation.

生效日期：2010年8月。产品技术参数和价格如有更改，恕不另行通知。本文档中的图片和/或图纸仅作举例用途。有关正确使用本设备的说明，请参阅合适的操作手册。如果在使用本设备时，未按照操作手册正确操作，可导致严重的人身伤害或死亡。适用于我们设备的唯一保证是适用于特别产品和销售的标准书写保证，特雷克斯不做任何其他保证、表示或暗示。以上所列产品和服务为特雷克斯公司和/或其子公司在美国和其他国家/地区的商标、服务标记或厂商名称。保留所有版权。Terex® 为特雷克斯公司在美国和许多其他国家的注册商标。© 2010，特雷克斯公司版权所有。

Terex Cranes, Global Marketing, Dinglerstraße 24, 66482 Zweibrücken, Germany
Tel. +49 (0) 6332 830, Email: info.cranes@terex.com, www.terexcranes.com

特雷克斯起重机，全球销售，德国 Dinglerstraße 24, 66482 Zweibrücken
电话：+49 (0) 6332 830, Email: info.cranes@terex.com, www.terexcranes.com

Brochure Reference: TC-DS-M-E/C-QY8F/1 - 08.10
手册参考：TC-DS-M-E/C-QY8F/1 - 08.10



TEREX®



WORKS FOR YOU.™