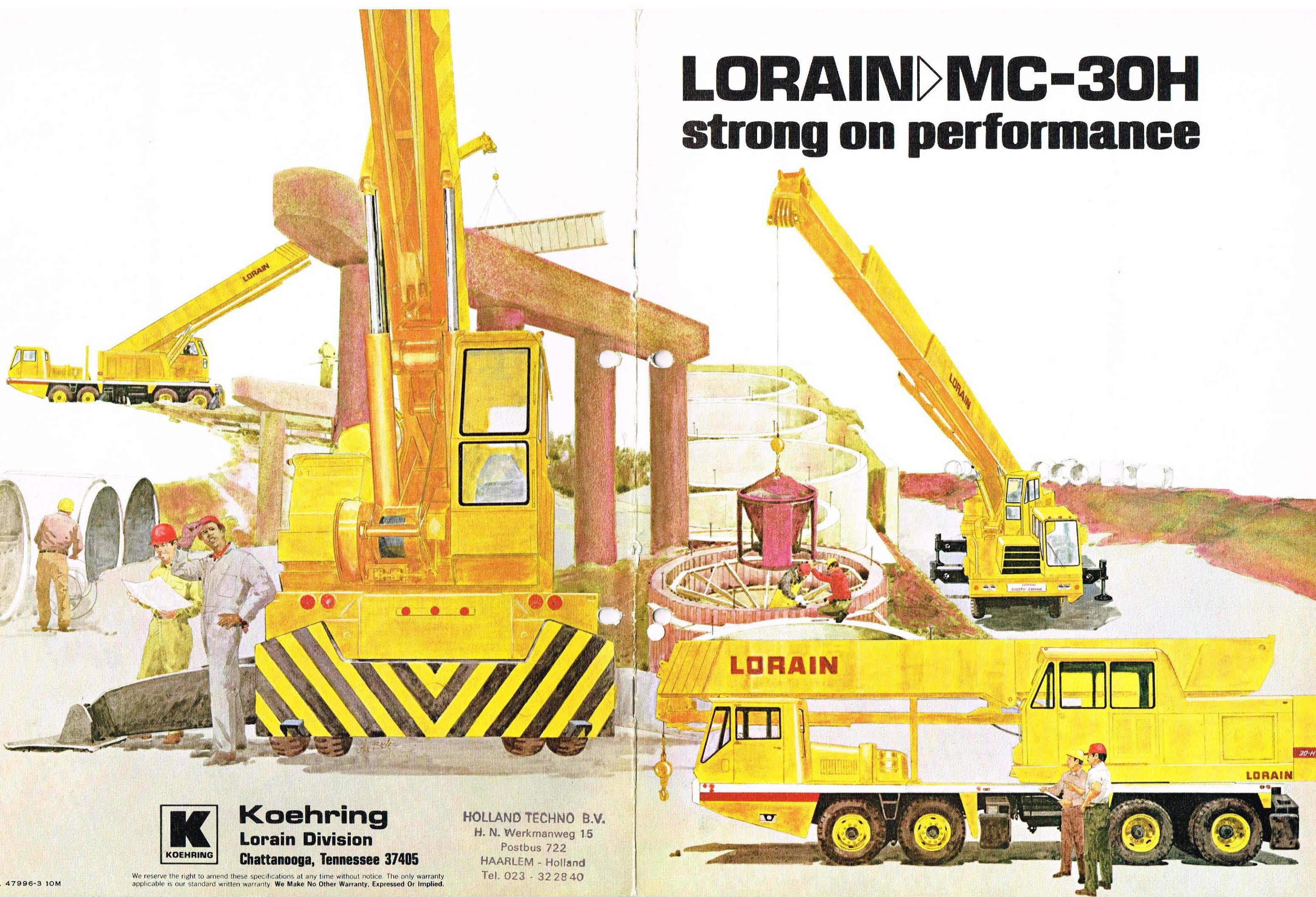


LORAIN ▶ MC-30H strong on performance

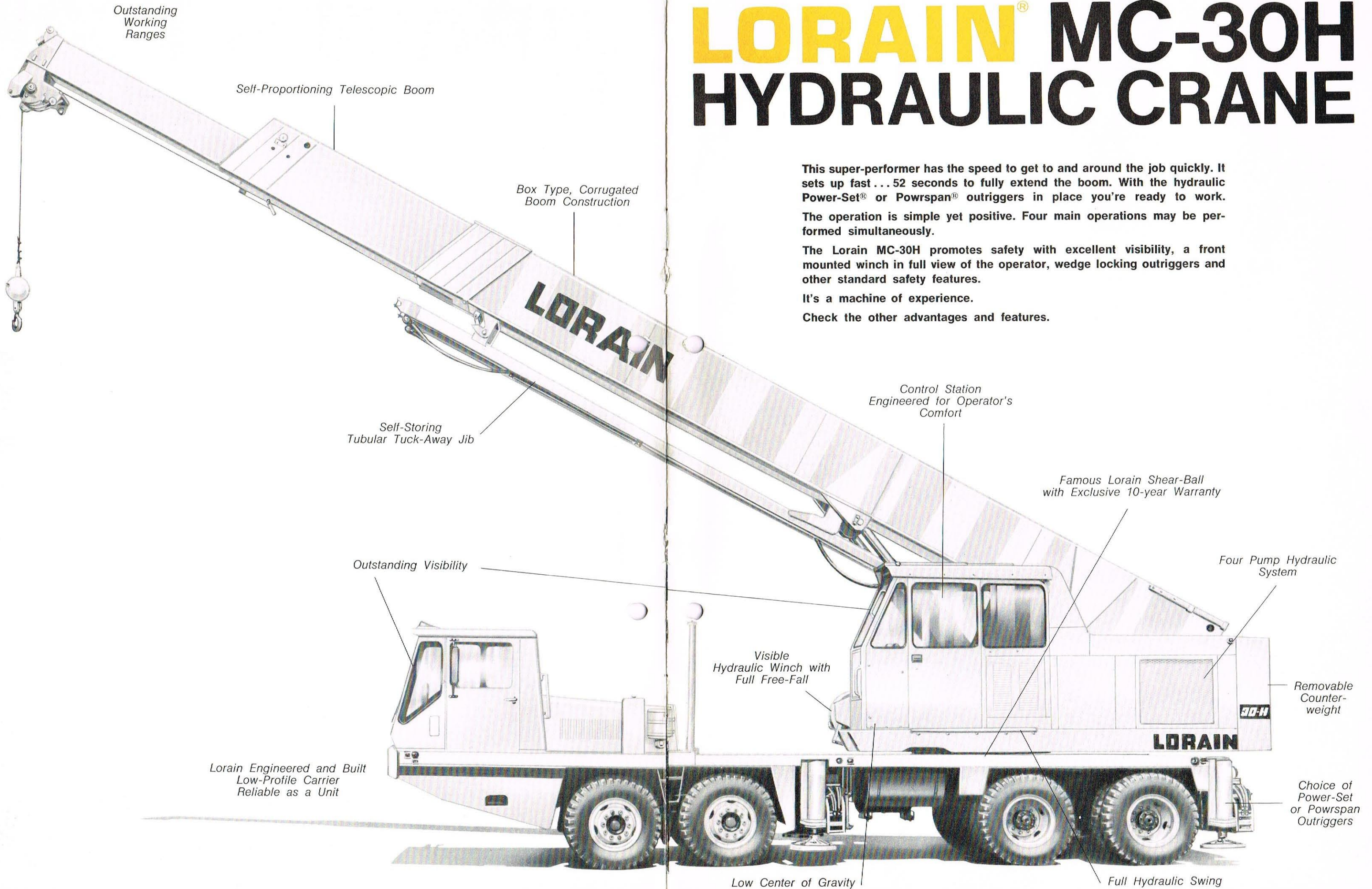


Koehring
Lorain Division
Chattanooga, Tennessee 37405

HOLLAND TECHNO B.V.
H. N. Werkmanweg 15
Postbus 722
HAARLEM - Holland
Tel. 023 - 32 28 40

We reserve the right to amend these specifications at any time without notice. The only warranty applicable is our standard written warranty. We Make No Other Warranty, Expressed Or Implied.

LORAIN[®] MC-30H HYDRAULIC CRANE



Outstanding Working Ranges

Self-Proportioning Telescopic Boom

Box Type, Corrugated Boom Construction

Self-Storing Tubular Tuck-Away Jib

Outstanding Visibility

Lorain Engineered and Built Low-Profile Carrier Reliable as a Unit

Visible Hydraulic Winch with Full Free-Fall

Low Center of Gravity

Control Station Engineered for Operator's Comfort

Famous Lorain Shear-Ball with Exclusive 10-year Warranty

Four Pump Hydraulic System

Removable Counter-weight

Choice of Power-Set or Powrspar Outriggers

Full Hydraulic Swing

This super-performer has the speed to get to and around the job quickly. It sets up fast... 52 seconds to fully extend the boom. With the hydraulic Power-Set[®] or Powrspar[®] outriggers in place you're ready to work.

The operation is simple yet positive. Four main operations may be performed simultaneously.

The Lorain MC-30H promotes safety with excellent visibility, a front mounted winch in full view of the operator, wedge locking outriggers and other standard safety features.

It's a machine of experience.

Check the other advantages and features.

LORAIN MC-30H

TELESCOPIC, SELF-PROPORTIONING BOOM

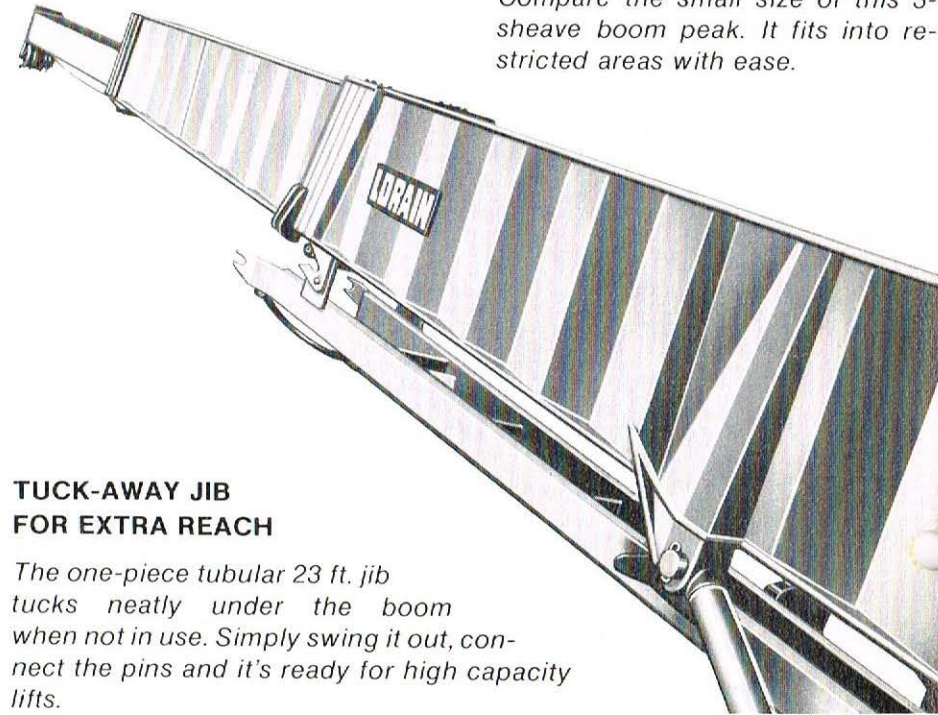
Lorain's unique, 3-section box-type, self-proportioning boom extends simultaneously from 28 to 82 feet.

The self-proportioning feature automatically selects the maximum boom strength for any boom length and minimizes unsafe operation due to operator error.

Side plates of cold formed, corrugated construction offer superior resistance to vertical loads.

The single cylinder design with interconnected chain mechanism concentrates weight at the base of the boom, allowing greater capacities on the hook.

The two moving boom sections slide in and out on 16 "L" shaped reinforced bearing strips made of low friction, durable plastic. Bearing strips transfer and distribute the load over the entire bearing length, eliminating dangerous concentrated loads.

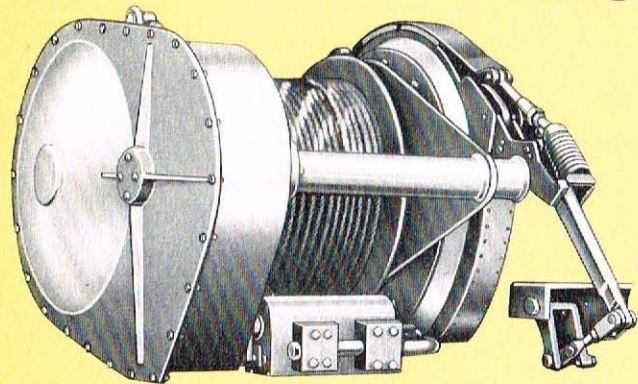


Compare the small size of this 3-sheave boom peak. It fits into restricted areas with ease.

TUCK-AWAY JIB FOR EXTRA REACH

The one-piece tubular 23 ft. jib tucks neatly under the boom when not in use. Simply swing it out, connect the pins and it's ready for high capacity lifts.

LORAIN FULL FREE-FALL WINCH DESIGNED FOR PRODUCTION AND CONTROL



Lorain engineered, specifically for the MC-30H, this winch has it all . . . 4 hoisting speeds, 4 lowering speeds and full free-fall lowering. A maximum line pull of 12,800 lbs. and 400 F.P.M. line speed.

The 14" drum has a maximum capacity of 705' of 5/8" cable. It provides equal line speeds under power up and down for increased versatility and production. Equipped with disc type clutch and foot controlled 28" external mechanical brakes.

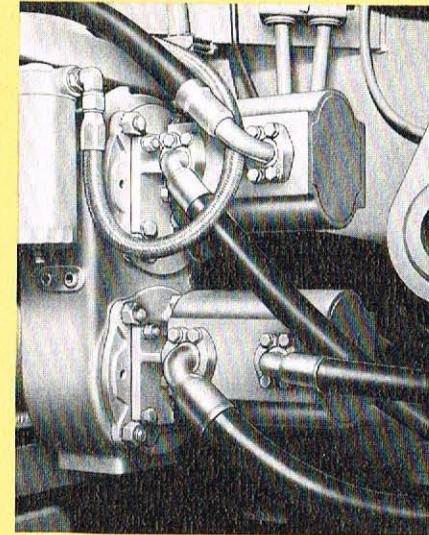
Precise load control is available to a degree previously attainable only on a conventional crane.

An auxiliary winch is also available.



The Lorain winch is up front in full view of the operator for safe operation.

4-PUMP HYDRAULIC SYSTEM



A versatile 4-pump hydraulic system permits 4 different operations simultaneously. Main winch or boom extension speed can be increased and still 2 other boom operations can be performed at maximum capability.

Swing is always completely independent.

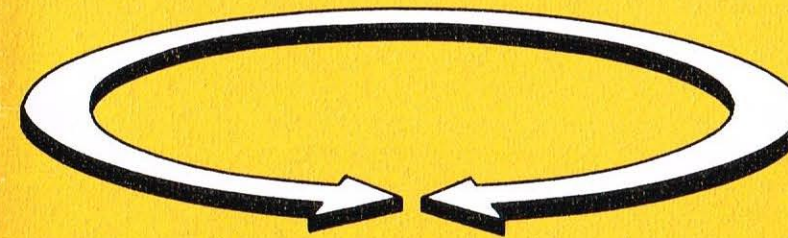
Sturdy gear type pumps, matched to engine horsepower, are used for dependable, heavy duty service. A master clutch between the power unit and the hydraulic pumps allows disconnect for fast cold weather starting.

Long life, oversize metered control valves support the system.

A single large hydraulic tank along with a special 40 G.P.M. oil cooler maintains low temperature throughout the hydraulic system.

All components are field proven and insure maximum reliability.

Full 360°



Hydraulic Swing

SMOOTH CONTINUOUS HYDRAULIC SWING

A full hydraulic swing system, enclosed in oil, has a 360° continuous rotation. Feather-touch control through metered hydraulic valves with 0 to 2.7 RPM swing speed provides smooth, precise operation.

Free drift in neutral protects boom side loading. Gear pumps and motor are rugged and long-wearing. Swing has a hydraulic controlled, disc type brake.

SHEAR-BALL® WARRANTED FOR 10 YEARS

The famous Lorain Shear-Ball is like a huge ball bearing with balls interlocking the two races. It provides faster work cycles, long service life, greater strength. No downtime for adjustments. Maintenance is reduced to routine lubrication.

The Shear-Ball is warranted in writing for 10 years. No other turntable connection carries such a warranty.



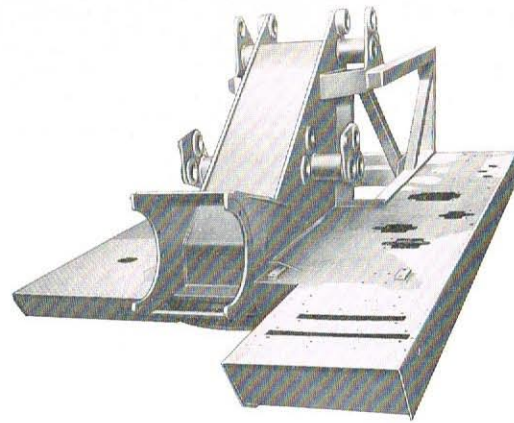


EFFICIENT OPERATOR CONTROL STATION

As on all Lorain cranes, the operator's comfort and convenience call for designed-in features. Levers and pedals are efficiently placed. Control lever knobs are comfortably shaped. Convenient foot throttle as well as hand throttle.

The seat and its position are human-engineered for day-in, day-out comfort. Picture-window visibility promotes safety.

All controls are grouped together for easy, natural operation. Rocker type boom extension — retraction pedal.



UNITIZED TURNTABLE FRAME

The turntable bed and frame are incorporated into a solid one-piece welded unit. The box type front and lattice type rear provide stronger twist proof construction and an ultimate in strength to weight ratio. Precision machining is done after welding to insure proper fit and pin alignment.

IT'S A LORAIN CARRIER

Designed to go where the action is. Specifically mated to the 30H superstructure to insure reliability as a unit. Check these features:

- Two-man cab (optional)
- Box section frame utilizing high alloy steel.
- Choice of power, Hi-Horsepower engines available.
- 5 speed main transmission—4 speed auxiliary.
- Tandem front axle.
- Centralized power steering.
- Rocker beam bogie.
- Double reduction axle ratios.
- High traction differentials.
- Service air brakes.



It's a profit machine, built to go to and from the job in a hurry. Able to travel in most states. Outriggers can be removed simply and quickly. Power counterweight removal is standard. It's a "get up and go" machine—excellent highway speeds—35'8" overall length, under 12' high. Practically no front or rear overhang.

CHOICE OF OUTRIGGERS



POWER-SET OUTRIGGERS

Curved beams with attached floats go out and down simultaneously, simplifying set-up in rough terrain. Automatic wedge locks hold beams securely with no reliance on hydraulics. Power-Sets are simple, fast and safe. Easier to operate and maintain.



POWRSPAN OUTRIGGERS

Powrspan outriggers level the machine in any job condition in seconds. Powerful double acting hydraulic cylinders move the beams in and out. Separate vertical cylinders position the floats.

Controlled from carrier cab, beams can be extended to normal full position or partially in restricted areas. Floats adjust to uneven ground conditions and extend over obstacles.

