



**TEREX**®



**TRUCK CRANE**  
**汽车起重机**  
**QYE10**

**DATASHEET METRIC**  
**数据表 (公制)**

# QYE10



**WORKS FOR YOU.™**

## Key · 关键词汇

3

## Dimensions and Specifications · 技术参数

Crane Dimensions · 起重机外形尺寸	4
Specifications · 规格参数	5
Range Diagram · 起升高度	6

## Load Charts · 起重量表

7

## Technical Descriptions · 技术描述

Lifting Capacity · 起重量	8
Boom and Components · 主臂和零件	8
Jib · 副臂	8
Winch Performance · 起升机构工作速度	9
Crane Boom Function Speeds · 起重臂工作速度	9
Outrigger Function Speeds · 支腿工作速度	9
Outrigger Controls · 支腿操纵	9
Engine and Transmission · 发动机和变速箱	10
Hydraulics · 液压系统	10
Chassis and Components · 底盘及其部件	11
Driver Cab · 驾驶室	11
Operator Cab · 操纵室	11

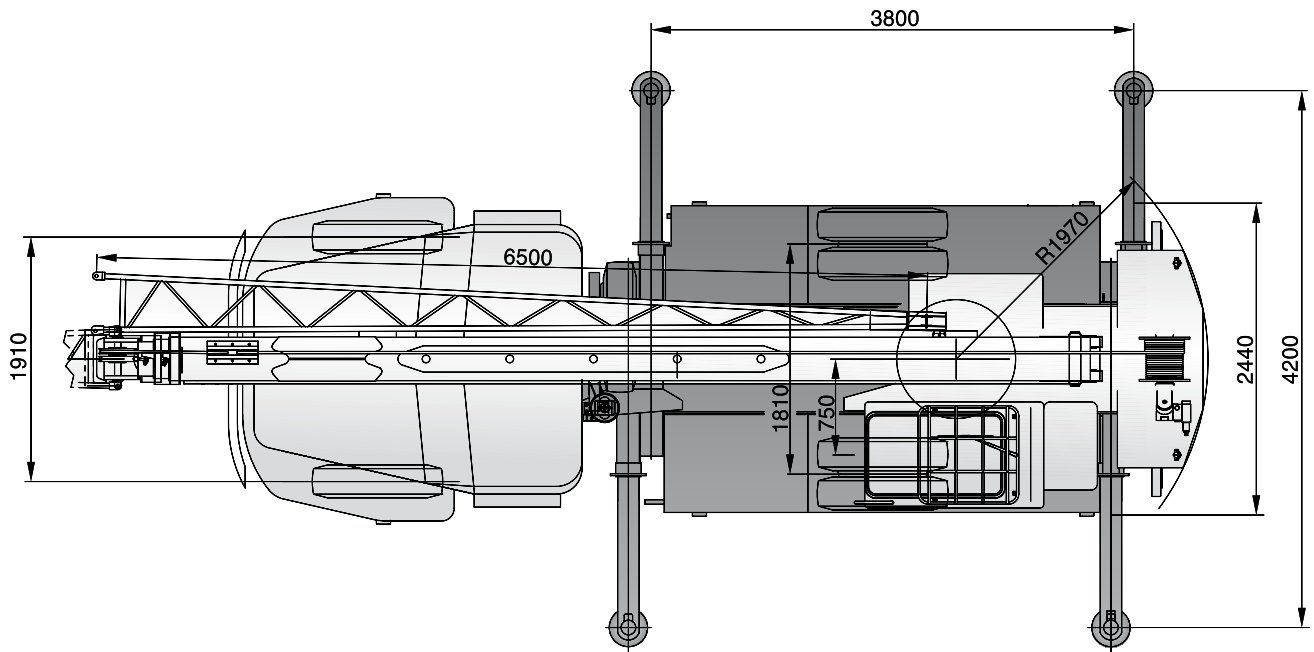
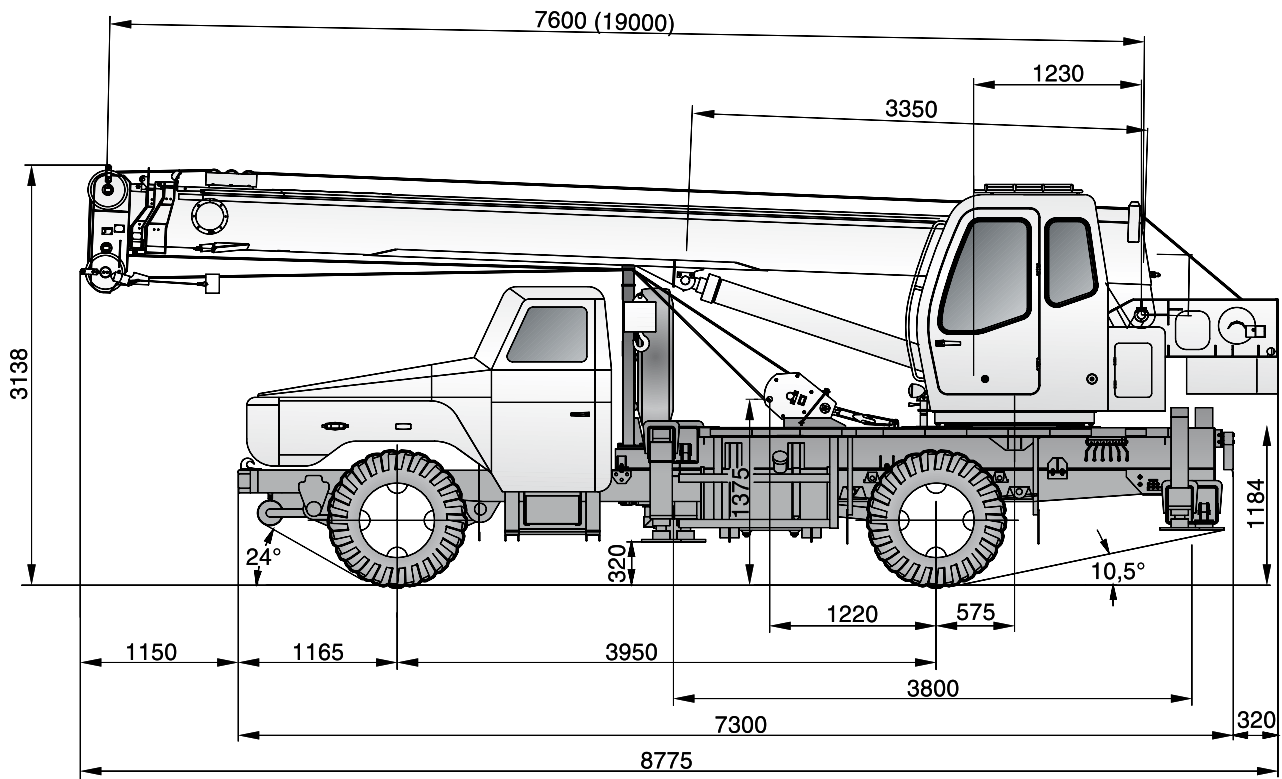


	Counterweight 配重		Main hoist 主起升机构
	Outrigger 支腿		Auxiliary hoist 副起升机构
	Radius 作业半径		Hoist speed 起升速度
	Main boom 主臂		Cab 驾驶室
	Boom length 吊臂长度		Engine 发动机
	Boom with extension 副臂		Steering 转向
	Boom angle 吊臂角度		Travel speed 行驶速度
	Tip height 臂尖高度		Hydraulics 液压装置
	Hook block 吊钩总成		Transmission 变速箱
	Slewing / Allowable swinging range 回转/回转范围		Air conditioning / Cab heating 空调/取暖器
	Working speeds 作业速度		Gradeability – road 爬坡度 – 公路
	Working temperature 作业温度		

# CRANE DIMENSIONS

## 起重机外形尺寸

**QYE10**



**TEREX**®



# SPECIFICATIONS

## 规格参数

QYE10

### Crane Weights · 起重机总重量

Gross vehicle weight (GVW) · 车辆总重量 (GVW) 11,490 kg

### Axle Loads · 桥负荷

Steering axle (axle 1) · 转向桥 (桥 1) 3,500 kg

Drive axle (axle 2) · 驱动桥 (桥 2) 7,990 kg

### Ground Clearances · 通过性参数

Minimum ground clearance · 最小离地间隙 260 mm

Ramp angle · 纵向通过角 20.0°

Approach angle · 接近角 24.0°

Departure angle · 离去角 10.5°

### Wheel Base · 轴距

Distance between axle 1 and 2 · 桥 1 和 2 之间的距离 3,950 mm

### Wheel Track · 轮距

Axle 1 · 桥 1 1,900 mm

Axle 2 · 桥 2 1,800 mm

### Outrigger Dimensions · 支腿跨距

Longitudinal span · 纵向跨距 3.8 m

Transverse span · 横向跨距 4.2 m

### Outrigger Forces · 支腿反力

Maximum counterforce · 最大支反力 118 kN

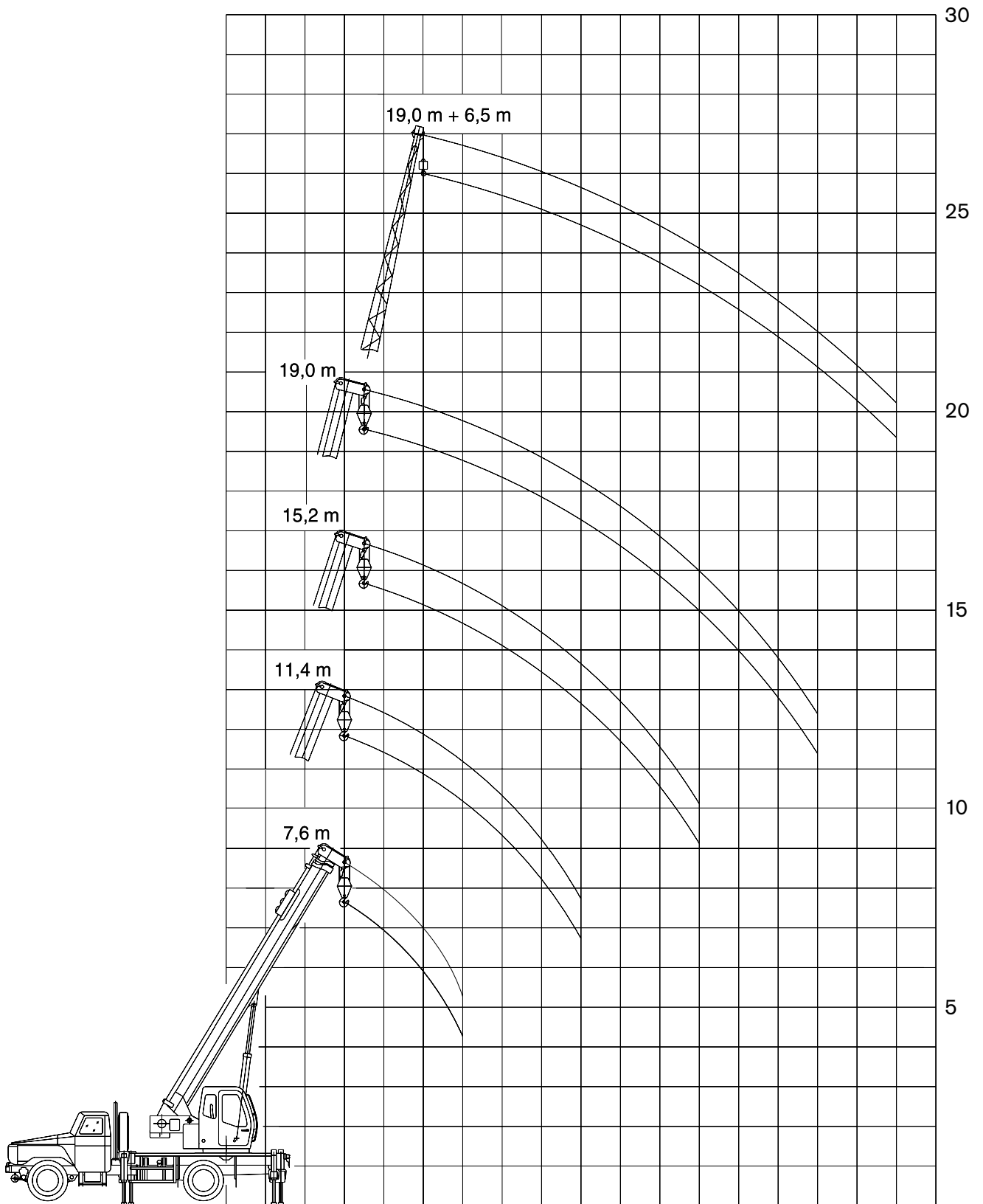
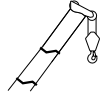
### Overall Dimensions · 外形尺寸

(Length x Width x Height) · (长 x 宽 x 高) 8.775 m x 2.44 m x 3.138 m

# RANGE DIAGRAM

## 起升高度

QYE10





TEREX®



# LOAD CHARTS

## 起重量表

QYE10

Fully extended · 支腿全伸 (100%)					180°	
	 7.6 m	11.4 m	15.2 m	19.0 m	 19 m + 6.5 m	
m	kg					m
3	10000	6000	-	-	-	3
3.5	9000	6000	4500	4000	-	3.5
4	7500	6000	4300	4000	-	4
4.5	6000	5500	4000	3500	-	4.5
5	5000	4800	3800	3000	1200	5
5.5	4000	4200	3400	2700	1100	5.5
6	3000	3500	3000	2500	1000	6
7	-	2800	2600	2100	900	7
8	-	2200	2200	1800	700	8
9	-	1800	1800	1500	600	9
10	-	1400	1400	1250	500	10
11	-	-	1200	1050	480	11
12	-	-	1000	900	420	12
13	-	-	800	750	400	13
14	-	-	-	630	380	14
15	-	-	-	500	350	15
16	-	-	-	-	320	16
17	-	-	-	-	300	17
Parts of Line 倍率	6	4	4	4	1	Parts of Line 倍率

## Notes · 说明

The tabulated load ratings includes weight of hooks, main hook is 105 kg and auxiliary hook is 35 kg.

Capacities above the thick line are based on boom strength, the others, on stability of the crane; all capacities in the table are maximum permissible values and must not be exceeded under any condition.

Telescoping boom with load is not allowed.

The radius in the table are horizontal distances between the centerline of the hook block and the stowing ring.

If the boom length exceeds the specified values, comparing it's capacities with the next longer one's, the load to the lift will be with in the smaller one's.

表中起重量包括起重钩重量，主钩重 105 kg，副钩重 35 kg。

表中粗线以上起重量由强度决定，粗线以下由稳定性决定。表中数值为起重机在坚固平整的地面上支腿全伸时的最大允许起重量，任何情况下不允许超过此值。

不允许带载伸缩起重臂。

表中所给的幅度值是指吊载后，吊钩中心到回转中心的水平距离。

如果臂长超过表中某一栏规定数值时，应把该栏数值与比它更长一级臂长的数值相比较，按照其中较小的额定起重量进行作业。

# TECHNICAL DESCRIPTIONS

## 技术描述

**QYE10**



### Lifting Capacity · 起重量

	Maximum rated capacity for main hook 主钩额定起重量	10 t
	Maximum load moment 最大起重力矩	308.7 kN.m

### Boom and Components · 主臂和零件

	Profile 截面形状	Hexagonal 六边形
	Number of sections 节数	3
	Base boom length 基本臂长度	7.6 m
	Base boom maximum lift height 基本臂最大起升高度	7.6 m
	Base boom maximum working radius 基本臂最大作业半径	6 m
	Fully extended boom length 全伸臂长度	19 m
	Fully extended boom maximum lift height 全伸臂最大起升高度	19.6 m
	Fully extended boom maximum working radius 全伸臂最大作业半径	15 m

### Jib · 副臂

	Jib length 副臂长度	6.5 m
	Slewing speed 回转速度	3.2 rpm



# TECHNICAL DESCRIPTIONS

## 技术描述

QYE10

### Winch Performance · 起升机构工作速度



Main hoist – 3rd layer – single rope speed  
主卷扬 – 第三层 – 单绳速度

0-123 m/min

### Crane Boom Function Speeds · 起重臂工作速度



Elevation – up  
起臂

30 sec

Elevation – down  
落臂

22 sec

Full extension  
全伸

30 sec

Full retract  
全缩

12 sec

### Outrigger Function Speeds · 支腿工作速度



Simultaneous full extension  
同步伸出

27 sec

Simultaneous full retract  
同步收缩

16 sec

### Outrigger Controls · 支腿操纵



Dual outrigger controls – LH and RH side  
支腿操纵 – 左侧和右侧

Dual control  
两侧操纵



Ambient working temperature  
作业温度

-20 °C – +40 °C

# TECHNICAL DESCRIPTIONS


## 技术描述

**QYE10**

### Engine and Transmission · 发动机和变速箱

	Yu chai 玉柴	YC6J180-30
	Emission compliance 排放标准	National Exhaust Standard III 国家排放标准 III
	Number of cylinders 缸数	6
	Aspiration 进气	Turbocharged 涡轮增压
	Rated power 额定功率	132 kW @ 2500 rpm
	Maximum torque 最大扭矩	650 Nm @ 1200 – 1700 rpm
	Estimated fuel consumption per 100 km 100 km 油耗	18 L
	Fuel type 燃油类型	Diesel 柴油
	Fuel tank capacity 燃油箱容积	160 L
	Manual gearbox 手动变速箱	Manual 手动

### Hydraulics · 液压装置

	Gear pump 齿轮泵	Gear pump 齿轮泵
	Hydraulic controls: 液压控制:	
	Mechanical, multi-lever controls 机械式, 多杆控制	Mechanical lever 机械杆



**TEREX**®



### Chassis and Components · 底盘及其部件

	Axle drive system 桥驱动系统	4 x 2
	Minimum turning radius 最小转弯半径	8 m
	Maximum gradeability 最大爬坡度	30 %
	Maximum traveling speed 最高行驶速度	85 km/h

### Driver Cab · 驾驶室

	Dong Feng truck cab 东风卡车驾驶室
	Adjustable driver seat 可调式司机座椅

### Operator Cab · 操纵室

	Adjustable seat 可调式座椅
	Ergonomically placed switches and gauges 开关和仪表的布置符合人机工程学
	Recirculation fan 循环风扇

## [www.terexcranes.com](http://www.terexcranes.com)

Effective Date: August 2010. Product specifications and prices are subject to change without notice or obligation. The photographs and/or drawings in this document are for illustrative purposes only. Refer to the appropriate Operator's Manual for instructions on the proper use of this equipment. Failure to follow the appropriate Operator's Manual when using our equipment or to otherwise act irresponsibly may result in serious injury or death. The only warranty applicable to our equipment is the standard written warranty applicable to the particular product and sale and Terex makes no other warranty, express or implied. Products and services listed may be trademarks, service marks or trade-names of Terex Corporation and/or its subsidiaries in the USA and other countries. All rights are reserved. Terex® is a registered trademark of Terex Corporation in the USA and many other countries. Copyright 2010 Terex Corporation.

生效日期：2010年8月。产品技术参数和价格如有更改，恕不另行通知。本文档中的图片和/或图纸仅作举例用途。有关正确使用本设备的说明，请参阅合适的操作手册。如果在使用本设备时，未按照操作手册正确操作，可导致严重的人身伤害或死亡。适用于我们设备的唯一保证是适用于特别产品和销售的标准书写保证，特雷克斯不做任何其他保证、表示或暗示。以上所列产品和服务为特雷克斯公司和/或其子公司在美国和其他国家/地区的商标、服务标记或厂商名称。保留所有版权。Terex® 为特雷克斯公司在美国和许多其他国家的注册商标。© 2010，特雷克斯公司版权所有。

Terex Cranes, Global Marketing, Dinglerstraße 24, 66482 Zweibrücken, Germany  
Tel. +49 (0) 6332 830, Email: [info.cranes@terex.com](mailto:info.cranes@terex.com), [www.terexcranes.com](http://www.terexcranes.com)

特雷克斯起重机，全球销售，德国 Dinglerstraße 24, 66482 Zweibrücken  
电话：+49 (0) 6332 830, Email: [info.cranes@terex.com](mailto:info.cranes@terex.com), [www.terexcranes.com](http://www.terexcranes.com)

Brochure Reference: TC-DS-M-E/C-QYE10 - 08.10  
手册参考：TC-DS-M-E/C-QYE10 - 08.10



**TEREX**®



**WORKS FOR YOU.™**